



CHURCH SQUARE IN GROBINA



Country / City Latvia, Jelgava
University / School Latvia University of Life Sciences and Technologies
Academic year 4th Year Bachelor
Title of the project Church Square in Grobina
Authors Rēzija Sabīne Jurševska

TECHNICAL DOSSIER

Title of the project	Church Square in Grobina
Authors	Rēzija Sabīne Jurševska
Title of the course	Bachelor thesis
Academic year	4th Year Bachelor
Teaching Staff	Dr. arch. Aija Ziemeļniece
Department/Section/Program of belonging	Landscape Architecture and Planning
University/School	Latvia University of Life Sciences and Technologies



Written statement, short description of the project in English, no more than 250 words

Grobina is a small town in the SW part of Latvia that has an incredible historical background to it, such as being the location of the first settlement in the country and being run by the Vikings between 7th and 11th century. None of this would have happened if the Ālande river was not right by it. This project proposal offers one of the possible scenarios for the improvement of the main town square inspired by the river. Nowadays the historical main town square that was right by the church no longer exists. Instead, three smaller squares and a street have been created in the area. Project proposal offers to merge the area surrounding the church as well as closing the current street, that divides it, to create a new main town square. The square not only serves as an everyday recreational space and a place for events, but it also is an informative and recognisable element of the city. The inspiration taken from the river ensures a sense of pride for the inhabitants and a distinctive feel for the visitors.

For further information
Máster d'Arquitectura del Paisatge -DUOT - UPC

T: + 34 93 401 64 11 / +34 93 552 0842
Contact via email at: biennal.paisatge@upc.edu

Máster d'Arquitectura del Paisatge -DUOT - UPC
ETSAB- Escola Tècnica Superior
d'Arquitectura de Barcelona
Avenida Diagonal, 649 piso 5
08028 Barcelona-Spain



CLIMATE CHANGE AGAIN

11th International Biennial Landscape Barcelona

Barcelona September 2020
SCHOOL PRIZE

LOCATION

CURRENT SITUATION



GROBINA CITY AND ITS SURROUNDINGS

- Legend
- ⋯ Boundary of the district
 - City
 - Road
 - Railway
 - ✈ Airport



Crane stone in Grobina symbolizes the founding of the city



Overall flat area. Basic concrete paving is being used

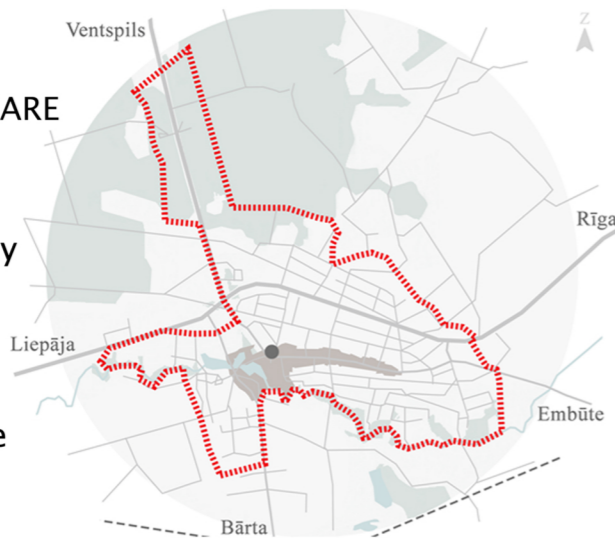


The view of the Grobina castle ruins is being blocked by large trees

IDENTITY OF THE CITY

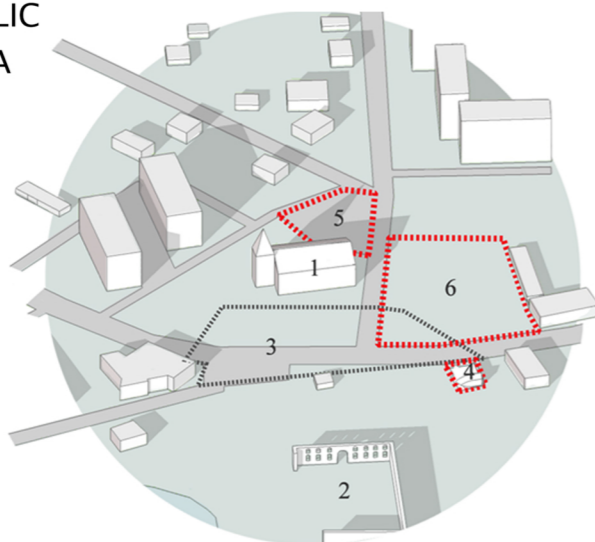
LOCATION OF THE SQUARE IN GROBINA CITY

- Legend
- ⋯ Boundary of the city
 - Historical center
 - Road
 - Railway
 - The Church square



LOCATION OF THE PUBLIC SQUARES IN GROBINA

- Explanation
- 1 – Evangelical Lutheran church
 - 2 – Grobina castle ruins
 - 3 – historical Market square
 - 4 – Market square
 - 5 – Church square
 - 6 – Crane square



ĀLANDE RIVER
Where the city started

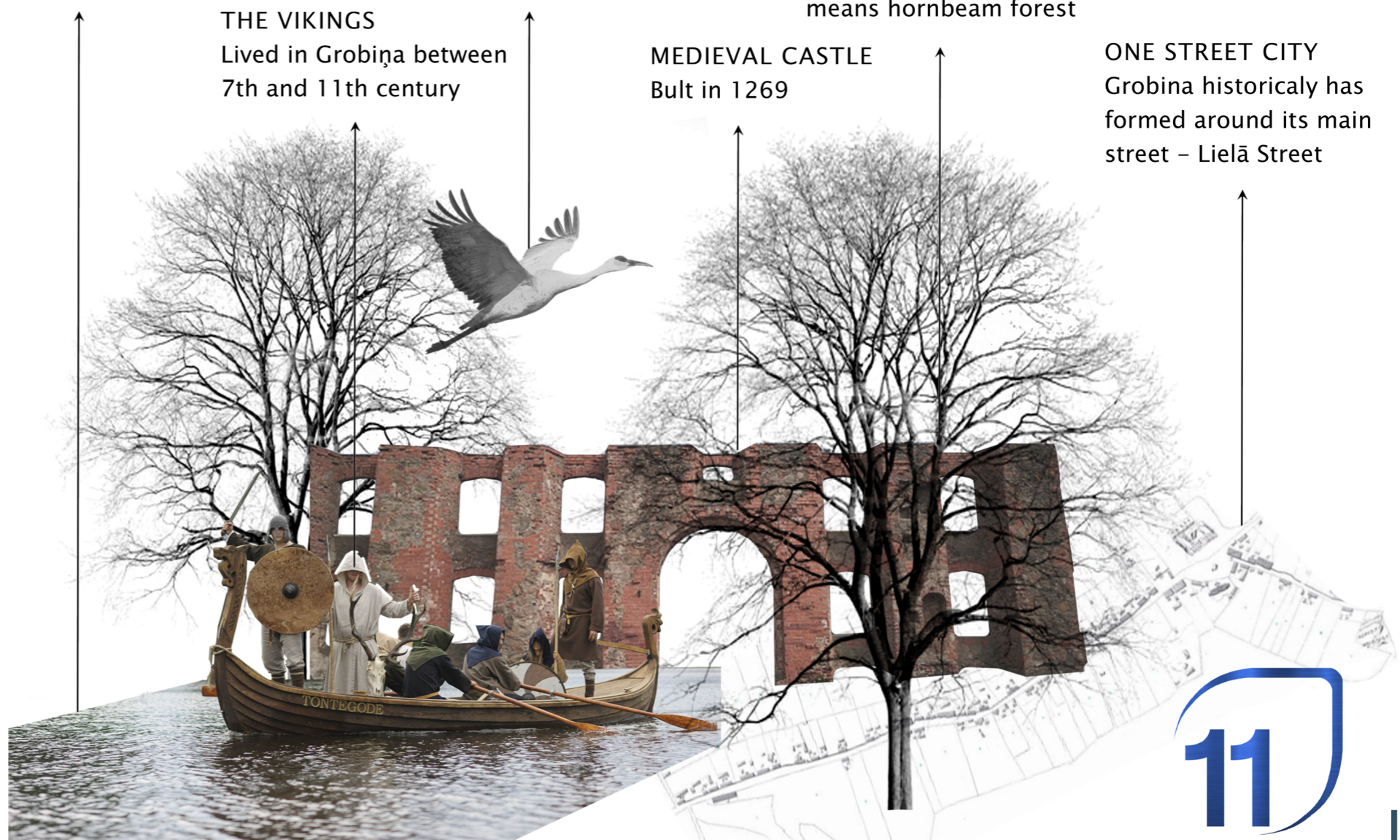
CRANE
Coat of arms

HORNBEAM
From Curonian 'gruobīns'
means hornbeam forest

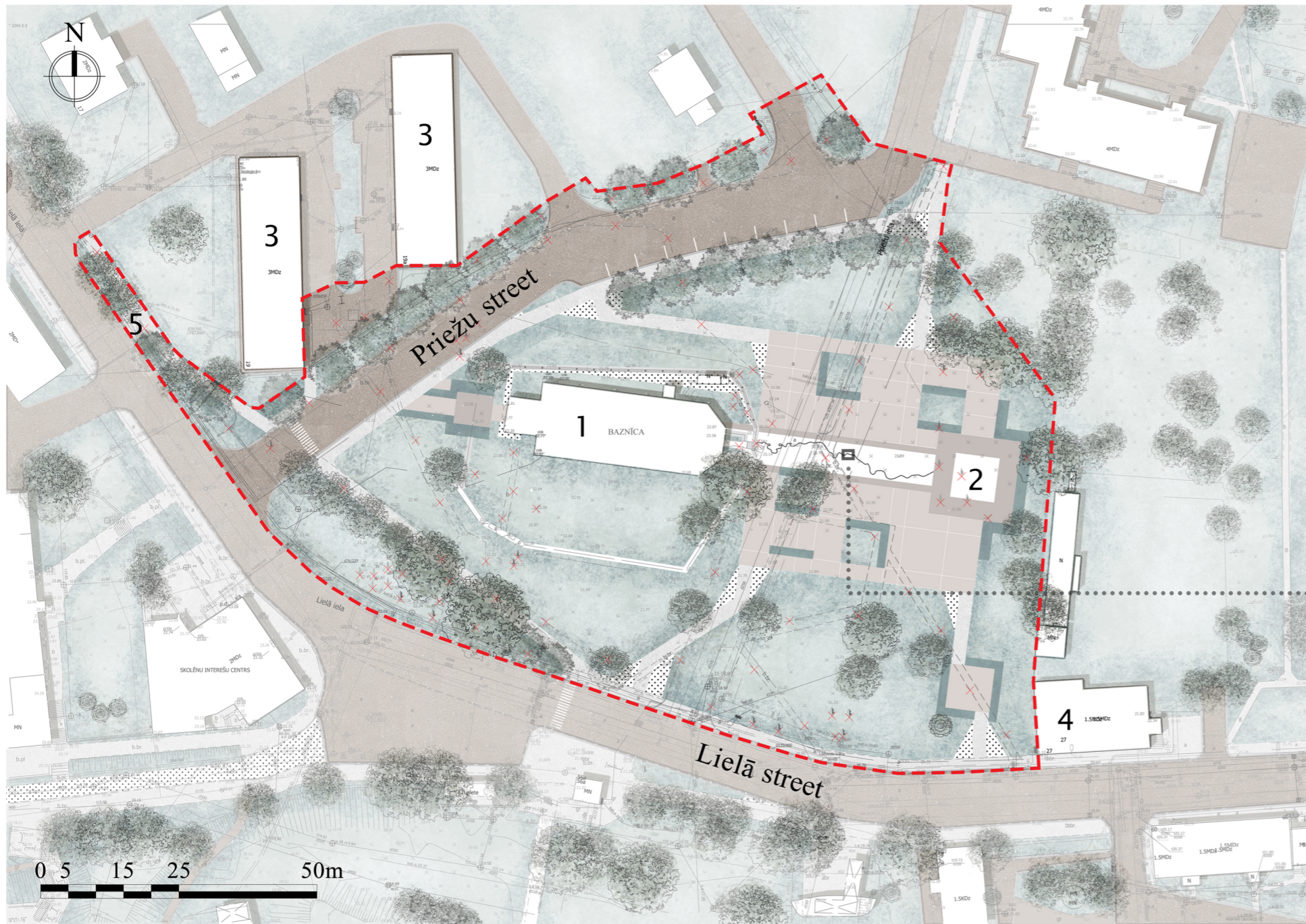
THE VIKINGS
Lived in Grobiņa between
7th and 11th century

MEDIEVAL CASTLE
Bult in 1269

ONE STREET CITY
Grobina historically has
formed around its main
street – Lielā Street



GENERAL PLAN



LEGEND

	Project boundary		Granite pavement		Designed gabion
	Existing building		Eco-pavement		Existing deciduous tree
	Asphalt		Embedded metallic belt		Existing conifer
	Concrete pavement		Lawn		Designed deciduous tree
	Clinker pavement		Plantings		Removable tree
	Clinker pavement		Existing stone wall		

EXPLANATION

- 1 Grobina's Evangelical Lutheran church
- 2 Dry fountain area
- 3 Apartment building
- 4 Private house
- 5 Bus stop

THE CONCEPT



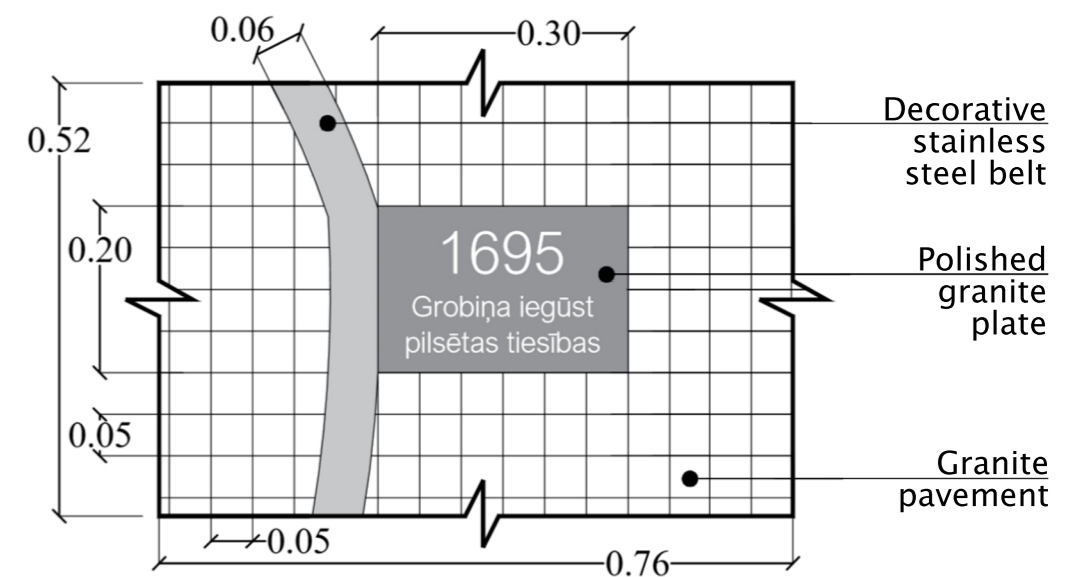
The concept is based on the symbolism of Ālande river and water. Ālande is the beginning of the city and it has defined the structural development of it. Likewise in religion water symbolizes the beginning and revival. The project proposal is a revival of the cities historical main public square. Designed in a modern way, the square preserves and highlights the historical heritage left in the area.



A drawing of Grobiņa city in 1661 from J. R. Stern's travel album

FRAGMENT OF THE PAVEMENT

One of the ways Ālande river's symbolism has been brought in the project is by the chosen pavement design.



The square's central axis is highlighted by white granite pavement. This defined line represents the river as a backbone of the city as well as the main street, which has been the reason why Grobiņa has the reputation of a 'one-street city'. Improved by informative granite plates elements the central area becomes an educational space.





THE ACCESS AREA

Functional zone surrounds the church from N, W and S sides and it includes the streets as well as sidewalks. Its main function is to redirect car movement to the sides of the square to create a safer space for the pedestrians.



REPRESENTATIVE AREA OF THE CHURCH

A very minimalistic approach has been used in this functional zone in order to keep the main focus on the architecture of the church. The main entrance of the church has been improved by a small square with some plantings.



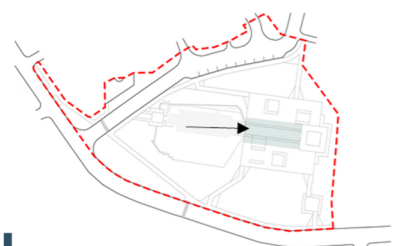
THE MEETING SPACE

The main element of the area is the Crane stone. The small scale square serves as a memorial place for the Crane square as well as a recreational and meeting space.



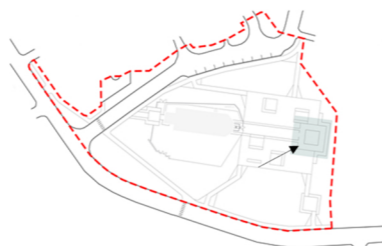
DESTINY AXIS OF THE CITY

The outline of the Ālande river is embedded in the pavement of the square. Additionally starting from the church there are some embedded granite plates with the city's major historical events engraved in them to give the area an educational function.



DRY FOUNTAIN AREA

Dry fountains are located in the east part of the public square in order to avoid the main pedestrian flows and to be in symmetry with the church. Water elements are not only calming and aesthetically pleasing but they also attract public space users of every age.



THE RECREATIONAL AREA

Multiple separate recreational areas are proposed in order to offer a place for leisure that would be appropriate for different seasons and weather conditions.

