



MULTIFUNCTIONAL SQUARE OF INČUKALNS

Country / City Latvia / Jelgava
University / School Latvia University of Life Sciences and Technologies
Academic year 4th Year Bachelor
Title of the project Principles of sustainability in public spaces. Multifunctional square of Inčukalns
Authors Anna Laganovska

TECHNICAL DOSSIER

Title of the project	Principles of sustainability in public spaces. Multifunctional square of Inčukalns
Authors	Anna Laganovska
Title of the course	Bachelor Thesis
Academic year	4th Year Bachelor
Teaching Staff	Dr. arch. Nātalija Nitavska
Department/Section/Program of belonging	Faculty of Environment and Civil Engineering/ Landscape Architecture and Planning
University/School	Latvia University of Life Sciences and Technologies



Written statement, short description of the project in English, no more than 250 words

The Inčukalns Multifunctional Square is primarily intended to provide train station functions and convenient pedestrian traffic between the town center, the station and the northern part of Inčukalns. Secondary the area can be used as a market or events place. On a daily basis, the market area serves as the closing element of Atmodas Street and a meeting place that represents Inčukalns identity.

The concept is based on a theoretical study on application of sustainability principles in public outdoor space. Particular attention is paid to assessing the potential of the site and improving the quality of the environment.

The design of the project is determined by the features of the site's historically significant objects. Heniņu Manor and the Railway station building serve as inspiration for the choice of colors, materials and textures.

Movement organization and accessibility, sustainable rainwater usage, lighting solutions and environmental quality of the town could be improved by Inčukalns multifunctional square development.

For further information
Máster d'Arquitectura del Paisatge -DUOT - UPC

T: + 34 93 401 64 11 / +34 93 552 0842
Contact via email at: biennial.paisatge@upc.edu

Máster d'Arquitectura del Paisatge -DUOT - UPC
ETSAB - Escola Tècnica Superior
d'Arquitectura de Barcelona
Avenida Diagonal, 649 piso 5
08028 Barcelona-Spain



CLIMATE CHANGE AGAIN

11th International Biennial Landscape Barcelona

Barcelona September 2020
SCHOOL PRIZE

LOCATION

Latvia

Riga planning region

Incukalns county

Incukalns

CONCEPT

PRINCIPLES OF SUSTAINABILITY

Optimize Site Potential, Optimize Maintenance Practices
Optimize Energy Use, Optimize Space and Material Use
Protect and Conserve Water, Enhance Environmental Quality



EXISTING NATURAL, CULTURAL AND HISTORICAL VALUES

Existing vegetation, Heninu manor

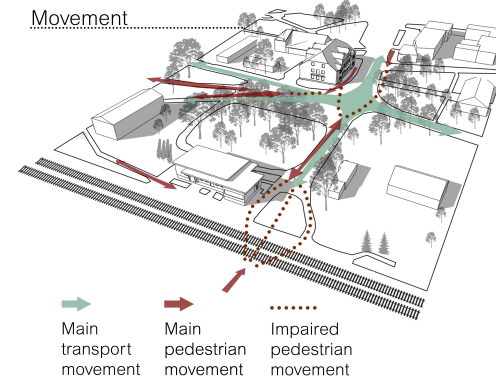
THE NEEDS OF MODERN SOCIETY

Mobility, Identity, Multifunctionality

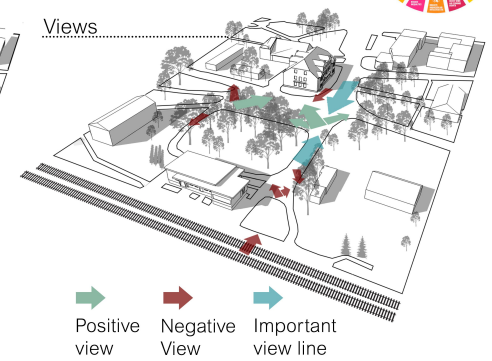
SITE ANALYSIS



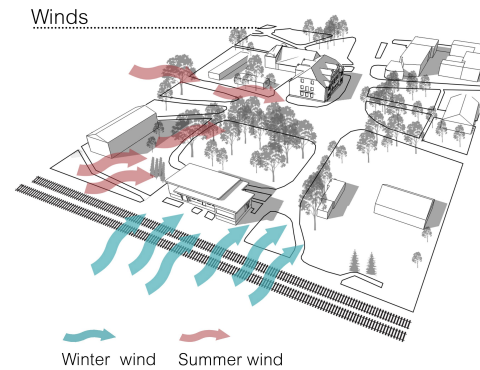
Movement



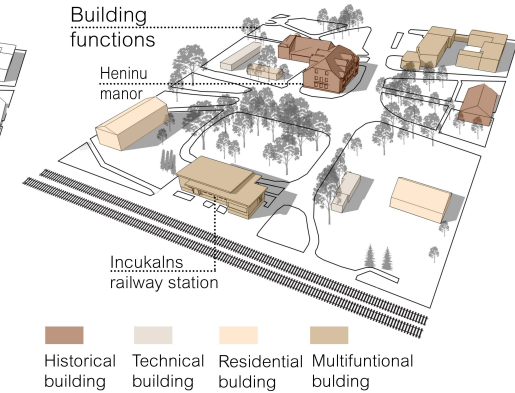
Views



Winds



Building functions

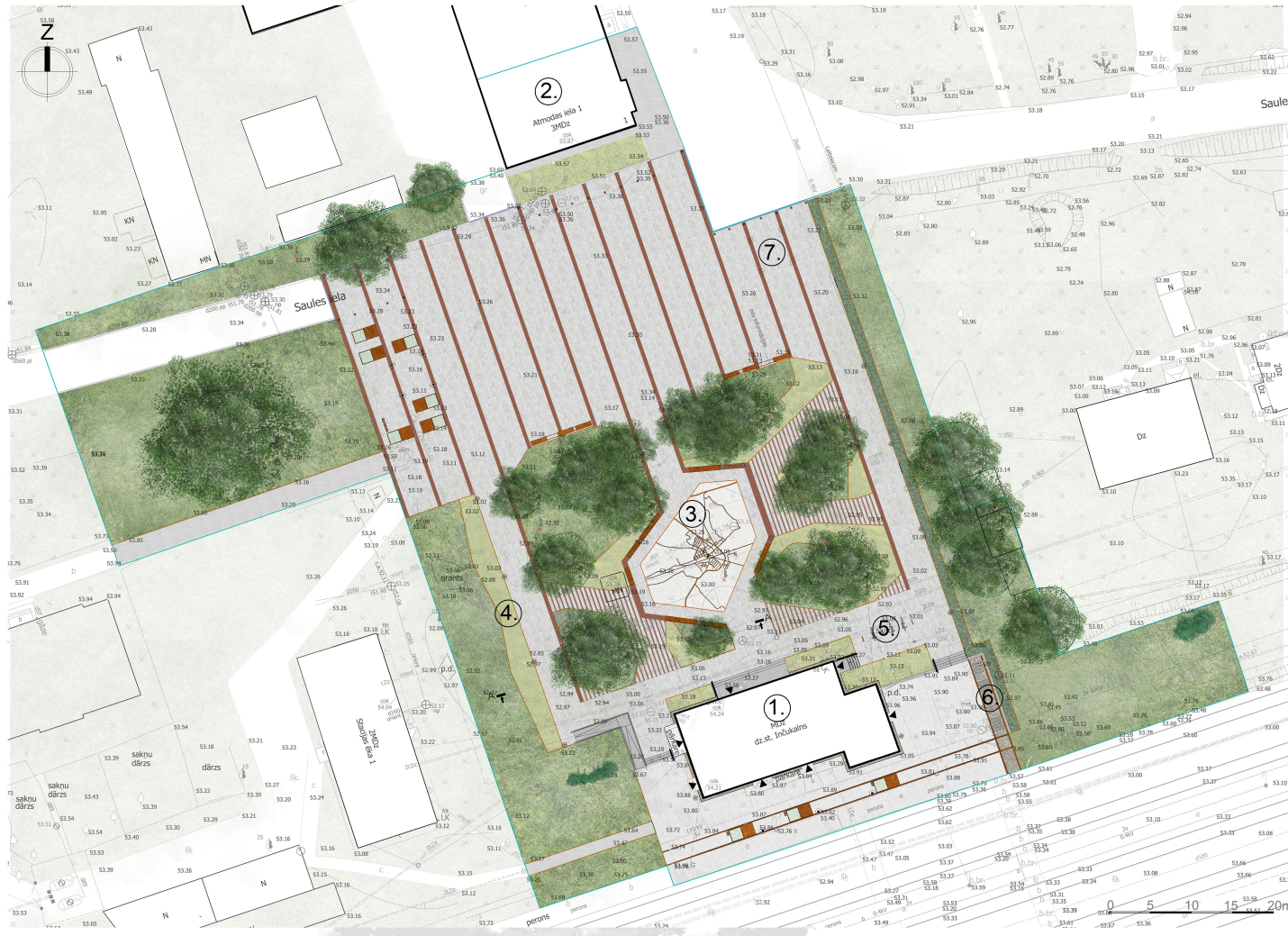


HISTORY TIMELINE

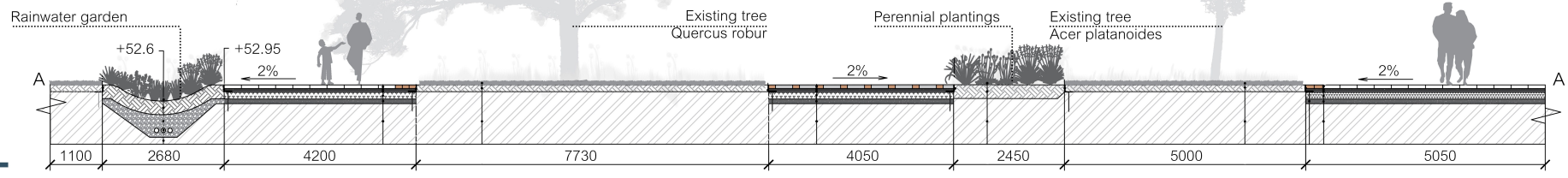
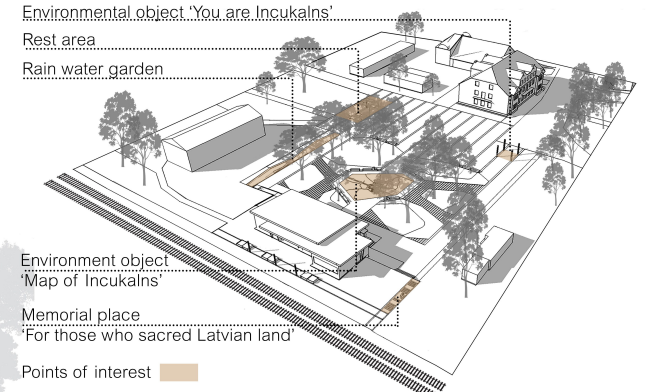
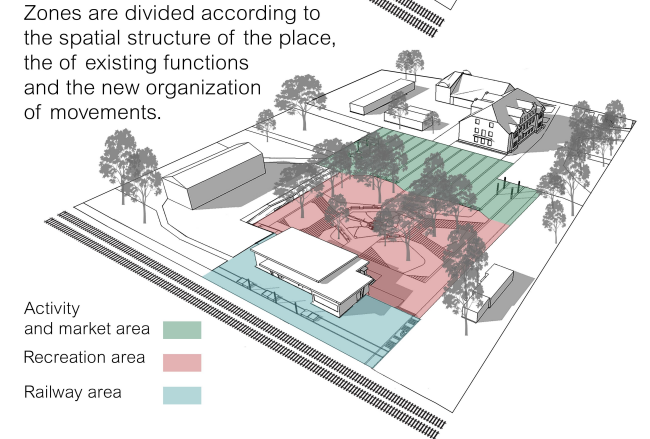
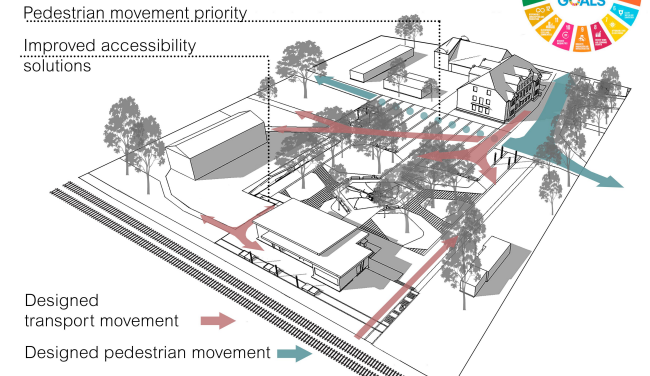
- 1436: Origins of a settlement
Hincenberg manor development
- 1800: Village center development
Heninu manor becomes the center of events
- 1889: Progress of the village under the influence of the new railway line
- 1918 - 1919: Incukalna battles significant for the independence of Latvia
- 1932: Multifunctional railway station building construction
- 1939 - 1945: Second world war
Destruction of Hincenberg Manor and Station
- 1950: Private building development
Summer cottage construction
- 2020: Administrative Center
Significant link with the capital city Riga



MASTER PLAN



- Legend**
- Project border
 - Existing building
 - Building Entry
 - Lawn
 - Metal plates
 - Perennial plantings
 - Shrub plantings
 - Concrete plate pavement
 - Clinker pavement
 - Eliminated object
 - Concrete pavement
 - Elastopave
 - Stone chipping
 - Existing deciduous and conifer tree
 - Plant container and sitting platform
 - Designed benches
 - Movable bench
 - Lighting elements
- Explanation**
1. Railway station Incukalns
 2. Heninu manor
 3. Environmental object 'Map of Incukalns'
 4. Rainwater garden
 5. Bicycle racks
 6. Existing Memorial stone
 7. Environmental object/ Steam fountain 'You are Incukalns'



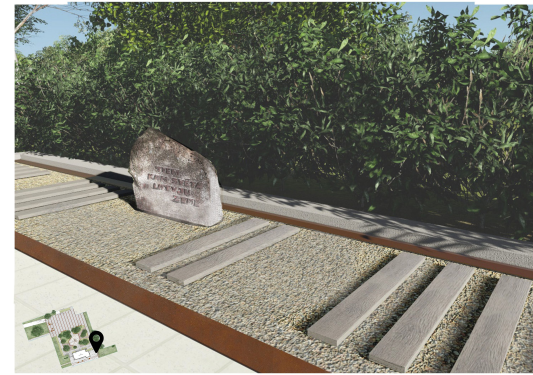
ACTIVITY AND MARKET AREA



Market and activity area is located between the Heninu Manor and the vertical structure of the area - the trees. It is characterized by the highest intensity of movement and transit function, so it is chosen for temporary events and for the location of the element characterizing the place identity.

The project offers a solution for the improvement of the existing commemorative sign "For those who sacred the land of Latvia". The stone, dedicated to the victims of communist genocide, is placed in an ornamental crushed stone topped with wooden sleepers. The wooden elements are grouped together - 4,4,2,5, which include the message of 44,000 Latvians who were deported on 25 March.

RAILWAY AREA



The focus point of the recreation area is the "Incukalns Map". The environmental object gives an unusual insight into the structure of the village, the main attraction objects are integrated into the pavement as lighting elements.

RECREATIONAL AREA

