



# GREEN WILGA



Country / City

University / School

Academic year

Title of the project

Authors

Poland

Cracow University of Technology

2017/2018

GREEN WILGA - Revitalization project of the river Wilga valley

Aleksandra Chmiel



## TECHNICAL DOSSIER

Title of the project	GREEN WILGA - Revitalization project of the river Wilga valley
Authors	Aleksandra Chmiel
Title of the course	Master's degree in Landscape Architecture
Academic year	2017/2018
Teaching Staff	Jadwiga Środulska - Wielgus, Prof., PhD. Eng. Arch.; Urszula Forczek-Brataniec, PhD. Eng. Arch.
Department/Section/Program of belonging	Institute of Landscape Architecture
University/School	Cracow University of Technology



Written statement, short description of the project in English, no more than 250 words

The riverside areas of the Wilga Valley, located in the very centre of Krakow, have been a valuable green area for centuries due to their diverse biotic and abiotic resources. The water course of the Wilga river has been changed several times as an extra channel was required to help prevent flooding in Krakow. Later on, several fragments of the valley were purchased by developers and intended for construction of residential areas and infrastructure for the city. These changes greatly disrupted pedestrian traffic within the site, increased water retention and affected its ecosystem. Primarily, this project was created to highlight the deterioration of riverside greenery in the city centre and accelerate water retention, resulting in reduced waterflow to reservoirs. Another goal was to create a functional and compositional concept of a selected part of the Wilga Valley. This was aimed at improving pedestrian and bicycle access and increasing the value of the landscape through minor design measures. The design phase was preceded by detailed historical, natural and planning analysis, on the basis of which guidelines and directions for space development were set. The concept includes the Masterplan, showing the new path system, greenery management and division into several functional zones. The modification of existing greenery created a space for new leisure activities like Park Ludwinów and landscape objects like a viewing platform, footbridges and site furnishings, which were solved as details. The final aim is to create a big green network connecting larger parks and natural reserves located in Krakow.

For further information  
Máster d'Arquitectura del Paisatge -DUOT - UPC

T: + 34 93 401 64 11 / +34 93 552 0842  
Contact via email at: [biennal.paisatge@upc.edu](mailto:biennal.paisatge@upc.edu)

Máster d'Arquitectura del Paisatge -DUOT - UPC  
ETSAB- Escola Tècnica Superior  
d'Arquitectura de Barcelona  
Avenida Diagonal, 649 piso 5  
08028 Barcelona-Spain



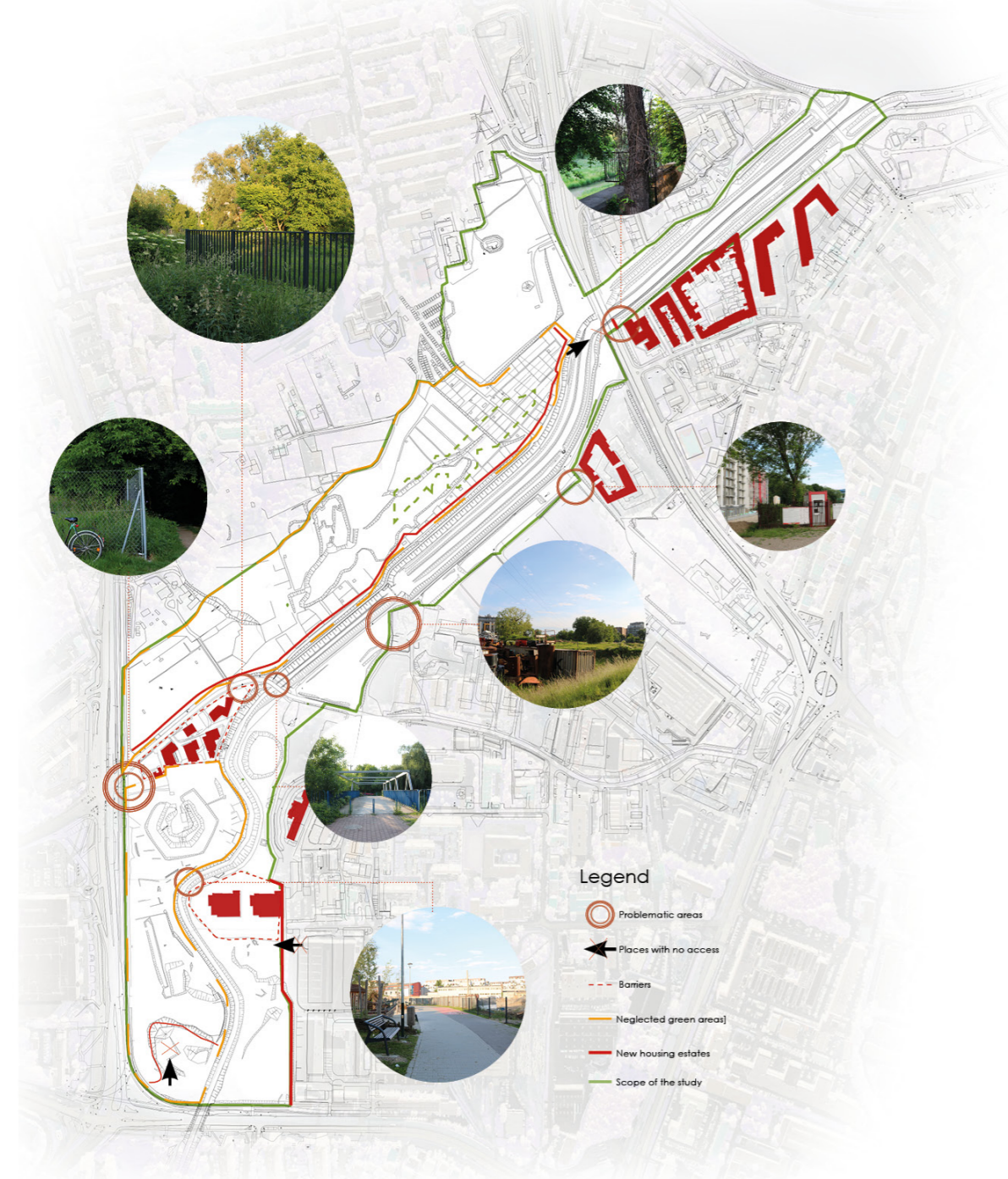
# CLIMATE CHANGE AGAIN

11th International Biennial Landscape Barcelona

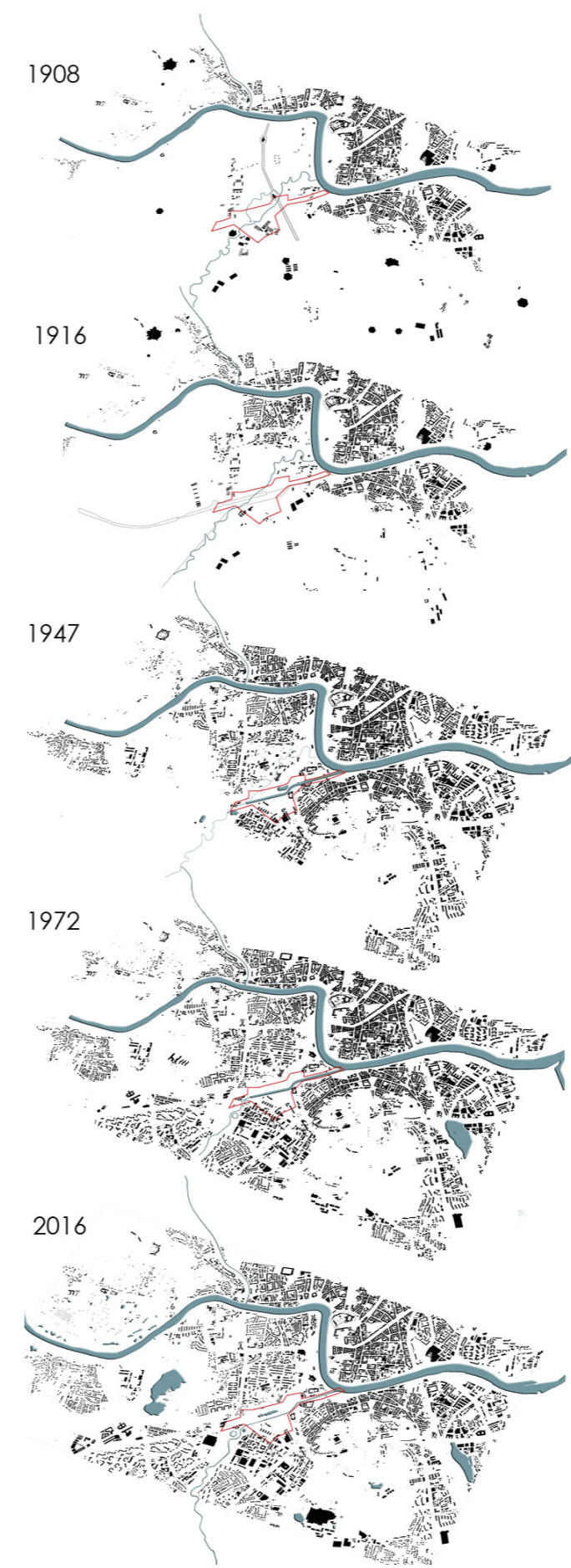
Barcelona September 2020  
SCHOOL PRIZE



### Problems at the study site



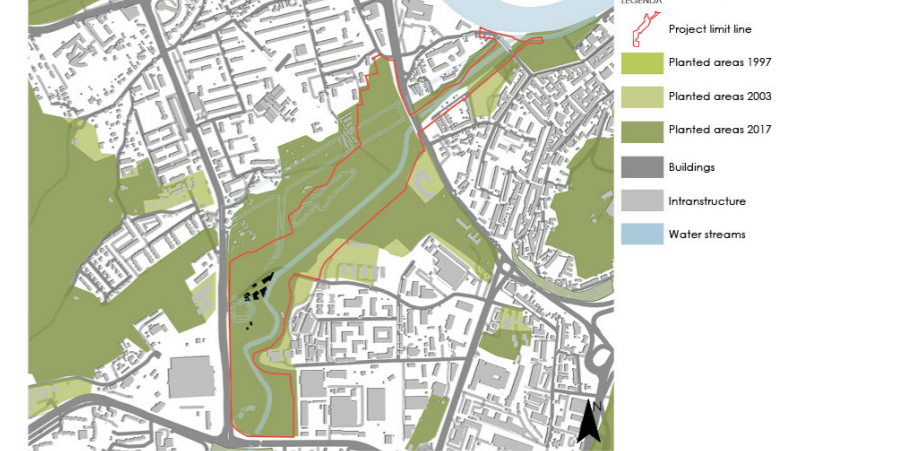
### Changes in the course of Wilga river



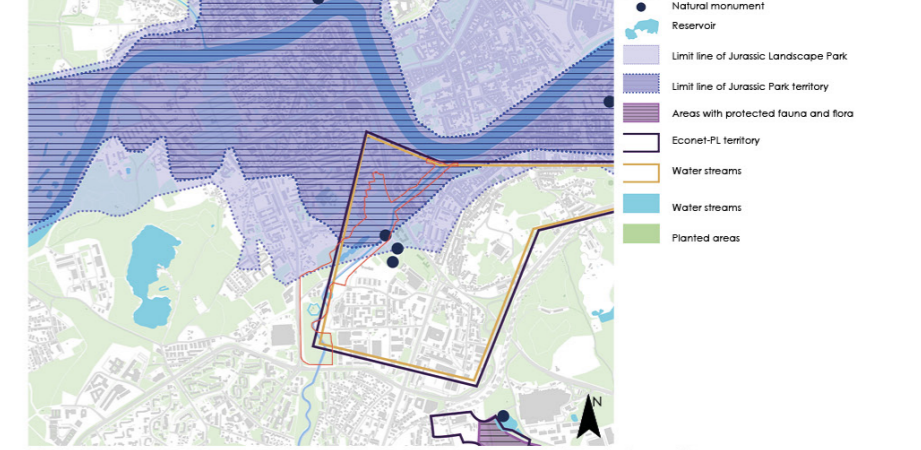
### Natural values / green corridors / problems



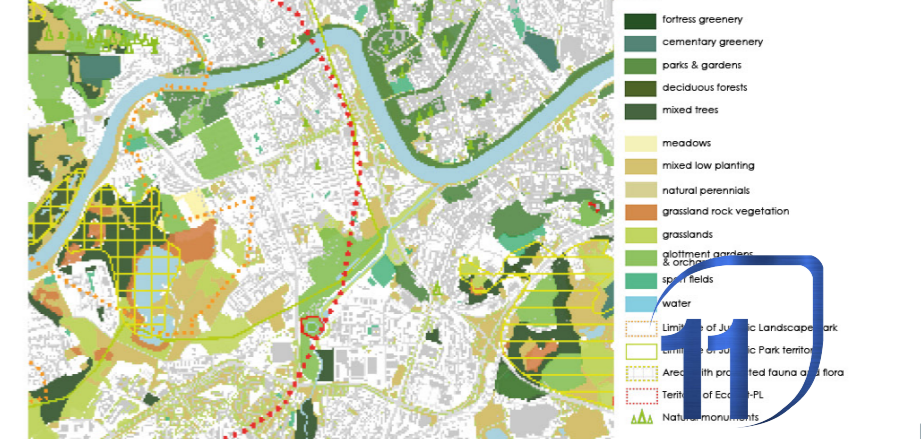
### Development of the neighbourhood (1997-2018)



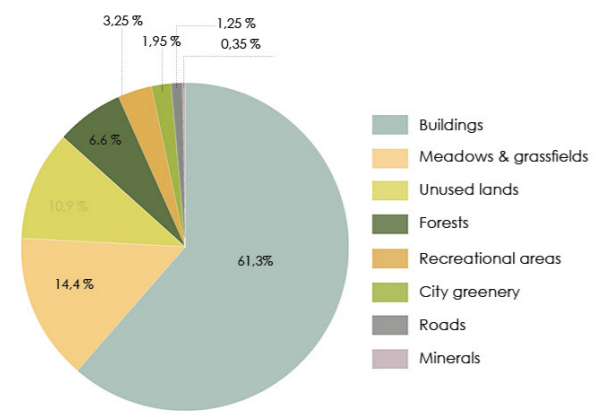
### Water resources



### Types of greenery and environmental protection measures



### Types of land cover



### Fauna occurring in the Wilga valley area





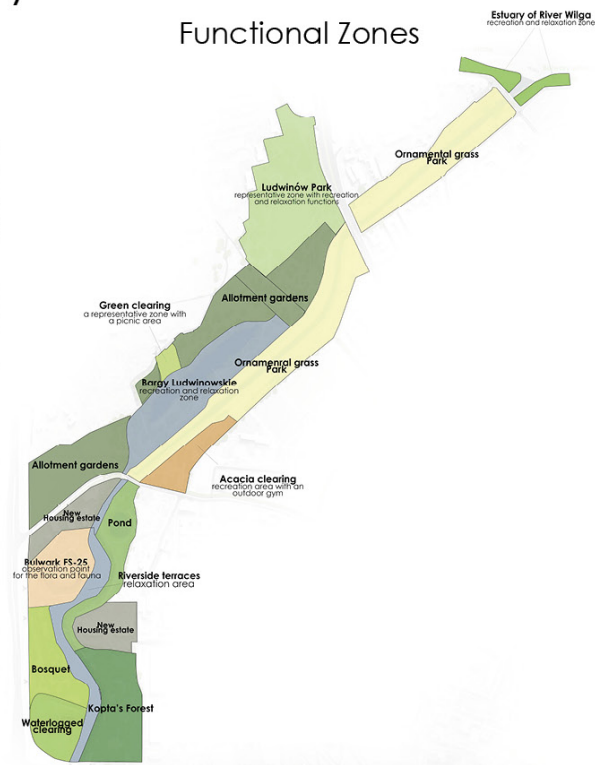
### Masterplan

#### LEGEND

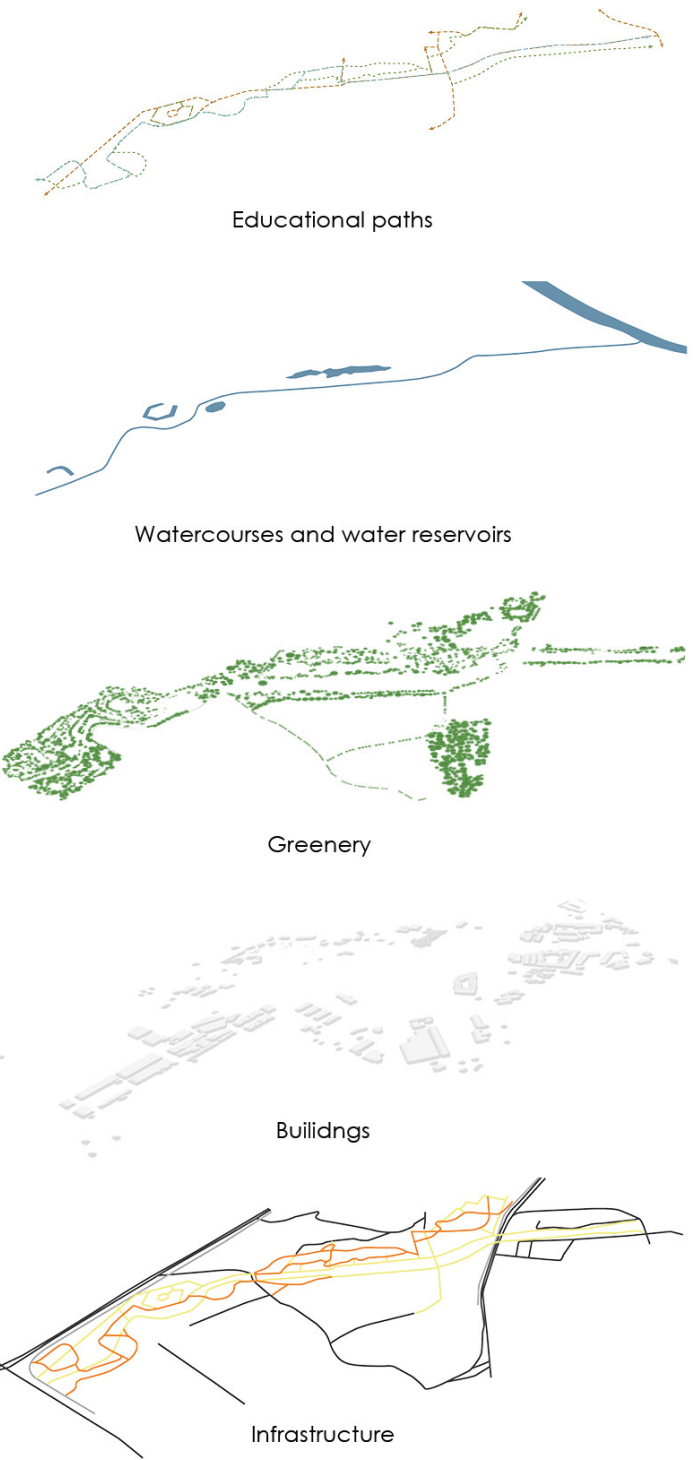
- nearest green area
  - main entrance
  - side entrance
  - tree
  - pavilion/toilets
  - buildings
  - grass
  - water reservoirs/river
  - footbridge
  - platform
  - pedestrian path
  - road
  - bike path
  - ornamental grasses
  - allotment gardens
  - Mateczny Spa
- 1 - Kopta's forest
  - 2 - Waterlogged clearing
  - 3 - Bosquet
  - 4 - Riverside terraces
  - 5 - Observation point „Bulwark FS-25”
  - 6 - Little Pond
  - 7 - Acacia clearing
  - 8 - Bagry Ludwinowskie
  - 9 - Green clearing
  - 10 - Ornamental grasses park
  - 11 - Pedestrian and bicycle footbridge
  - 12 - Ludwinow PARK
  - 13 - Wilga esuary



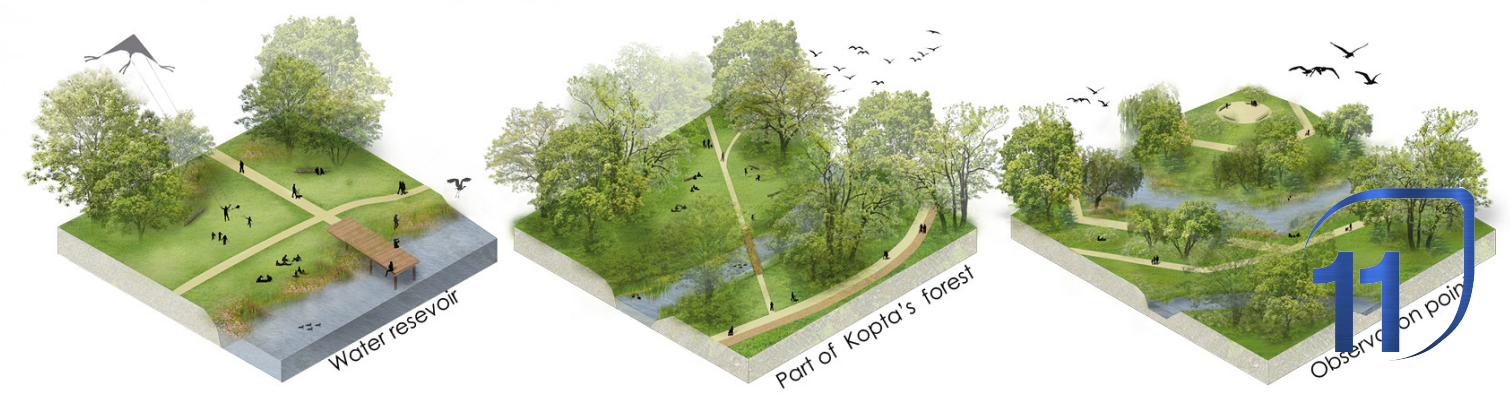
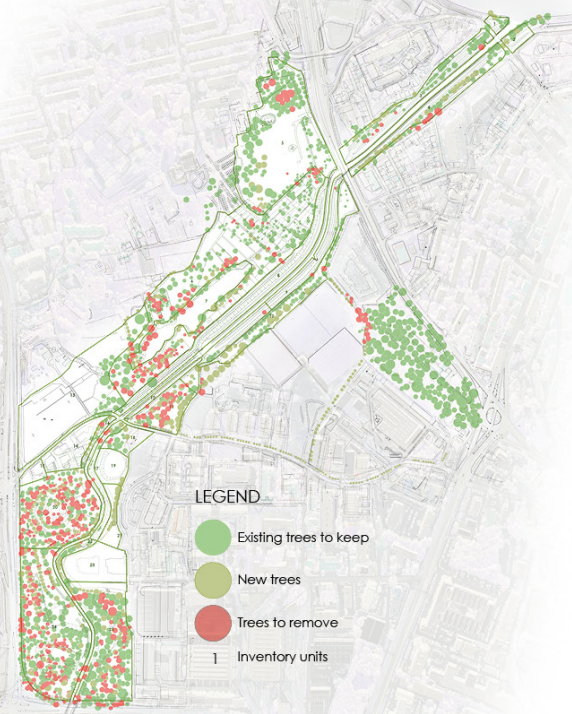
### Functional Zones



### Project layers



### Trees inventory





### Detail 1: Ludwinów Park

#### LEGEND

- ▲ main entrance
- △ side entrance
- planters
- new tree
- existing tree
- pavilion
- ▭ buildings
- grass
- hills
- benches
- pedestrian path
- flower meadow
- stairs



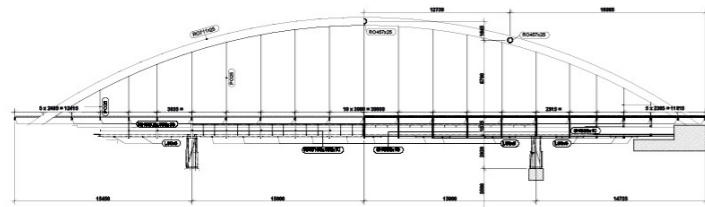
Ludwinów park



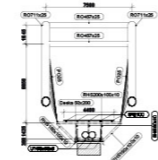
Kopta's Forest

### Detail 2 : footbridge

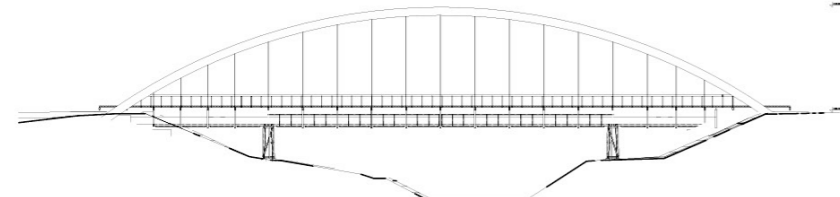
#### Section A-A



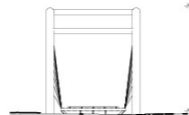
#### Section B-B



#### Elevation



#### Elevation



Footbridge