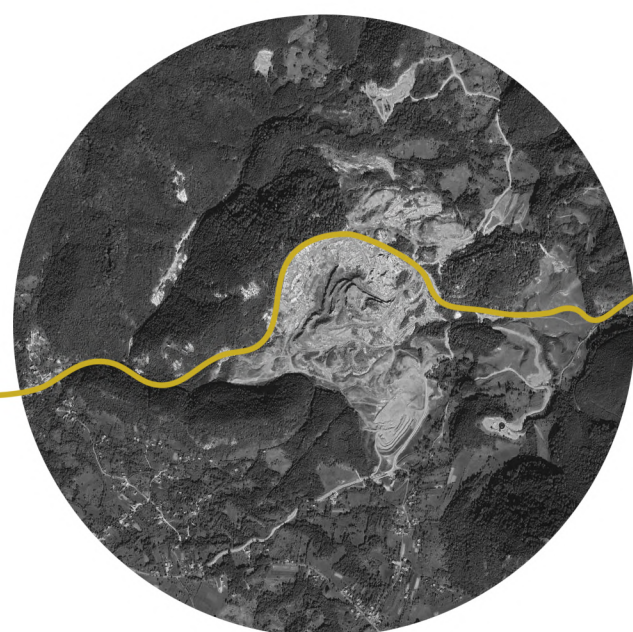
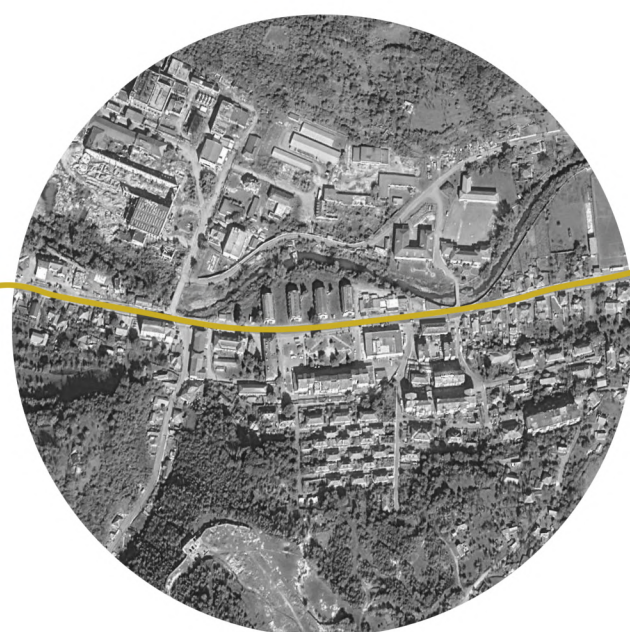




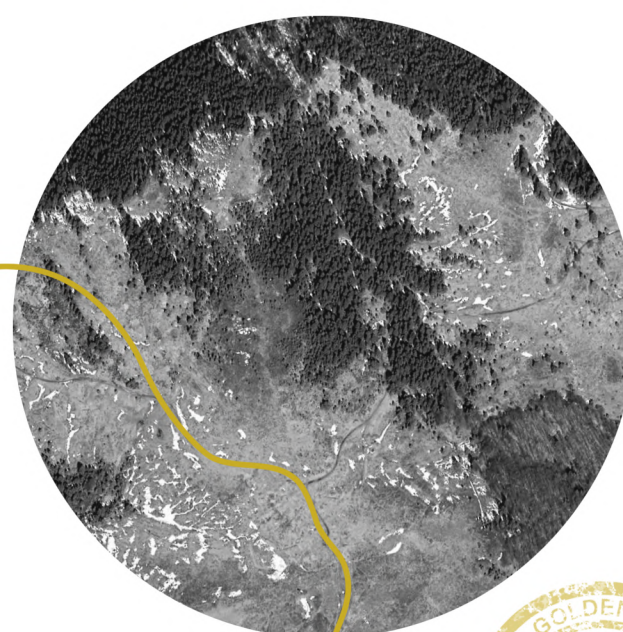
+ 45°58'28"N
23°2'20"E



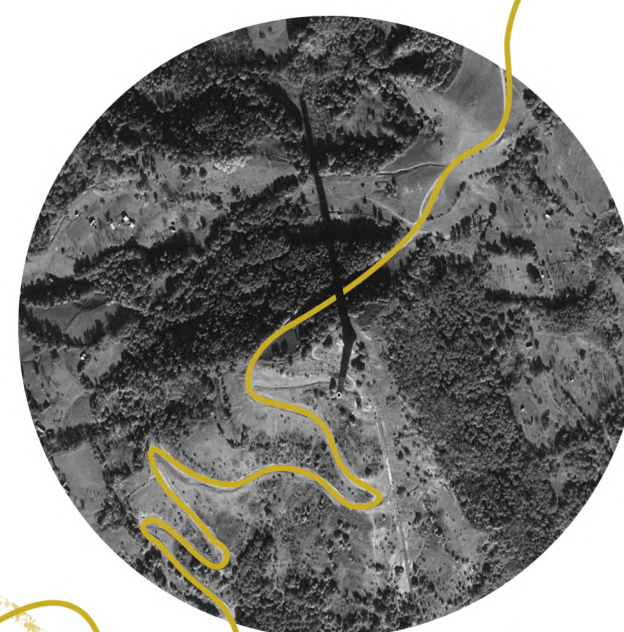
+ 46°07'46"N
22°47'24"E



+ 46°15'27"N
23°10'42"E



+ 46°09'32"N
23°13'16"E



Country / City

ROMANIA, TIMIȘOARA

University / School

POLITECHNIC UNIVERSITY OF TIMIȘOARA, FACULTY OF ARCHITECTURE AND TOWN PLANNING

Academic year

6th

Title of the project

VIA GOLDEN QUADRILATERAL

Authors

BANCOȘ ADRIAN, BISTRIAN ELIZA MIRIAM, BRAJE MIRCEA, STAN IOANA-MARIA

TECHNICAL DOSSIER

Title of the project VIA GOLDEN QUADRILATERAL
Authors BANCOȘ ADRIAN, BISTRIAN ELIZA MIRIAM, BRAJE MIRCEA, STAN IOANA-MARIA
Title of the course DIPLOMA
Academic year 6th
Teaching Staff PAȘCU GABRIELA, SZITAR-SÎRBU MIRELA
Department/Section/Program of belonging REGENERATION OF INDUSTRIAL LANDSCAPES
University/School POLITECHNIC UNIVERSITY OF TIMIȘOARA, FACULTY OF ARCHITECTURE AND TOWN PLANNING



Written statement, short description of the project in English, no more than 250 words

In times long past, the Quadrilateral with its glistening flickers from the mountain depths created its offspring, the aurum, gold. It is said that the world's primordial axis flows through this mysterious land. Adventurers came here from all corners of the earth, crossed perilous seas, marched on feeble lands, and fought terrible wars in pursuit of this vital catalyst of civilisation. Time moved on but the land's scars from all this struggle for the precious metal remain, waiting to be (re)discovered. Home, in the country of gold, the Quadrilateral waits... silent.

"The mountains, the rivers and the long flow of time are my treasures!"

Gold ore exploitation leaves a powerful mark on the environment that spans across time frames and territorial boundaries, becoming an increasing concern to us all. Sustainable regeneration of the golden quadrilateral cultural landscape is structured upon two levels. A horizontal one, regarding a multi-layered view on territory, administration and public policies, and a vertical one concerning the four distinct areas of the quadrilateral, each with its own natural, mythical, memorial and industrial characteristics. The intertwining of these two layers with the help of three thematic trails: natural, industrial, and memorial defines Via Golden Quadrilateral.

For further information
Máster d'Arquitectura del Paisatge -DUOT - UPC

T: +34 93 401 64 11 / +34 93 552 0842
Contact via email at: biennal.paisatge@upc.edu

Máster d'Arquitectura del Paisatge -DUOT - UPC
ETSAB- Escola Tècnica Superior
d'Arquitectura de Barcelona
Avenida Diagonal, 649 piso 5
08028 Barcelona-Spain



CLIMATE CHANGE AGAIN

11th International Biennial Landscape Barcelona

Barcelona September 2020
SCHOOL PRIZE



THE PROBLEM
THE GOLD

BETWEEN BLESSING AND CURSE



RO loc 48
(245,69 billions \$)
ECONOMY
CAN loc 10
(1798,61 billions \$)

RO loc 59/180
(48 puncte)
CORRUPTION
CAN loc 8/180
(82 puncte)

RO 7/20
EURO-SCALE CONFLICTS

MINING COMPANIES CANADA

90% PRODUCTION IS POSSIBLE

Location	Production	Deposits
ROSIA MONTANA	558 t 1,04 g/t	Romania 4 deposits Finlandia 2 deposits Grecia 4 deposits Bulgaria 1 deposit Macedonia 1 deposit
VALEA ROVINEI	433 t 0,53 g/t	Cehia 1 deposit Suedia 3 deposits Irlanda 1 deposit
CERTEJ	131 t 1,23 g/t	Spania 3 deposits Scribia 1 deposit
BUCIUM	37 t 1,20 g/t	Ucraina 1 deposit Slovaquia 2 deposits

THE EFFECTS

A FORMED MYTHOLOGY
THREATENED HERITAGE
DISAPPEARED VILLAGES
INSTABILITY
CORUPTION
A NEW CULTURAL PLACE
MEGALOMANIA
TOXIC LANDSCAPE

THE PLACE

ROMANIA,
APUSENI MOUNTAINS
-
VIA AUREUM

THE SURFACE

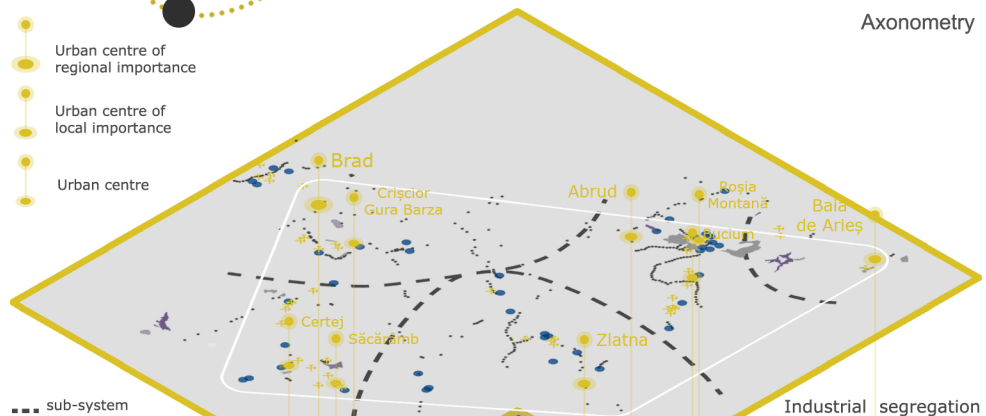
1 000 KM²

THE CHARACTER

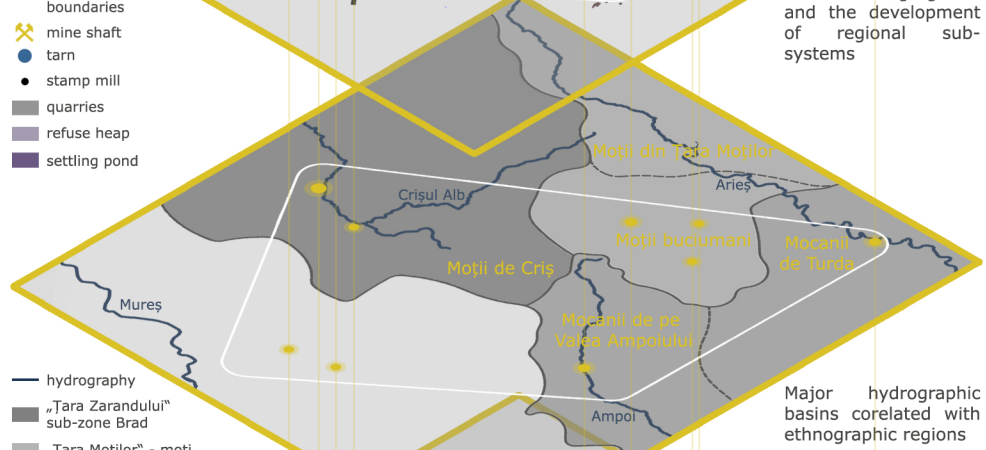
HISTORIC
NATURAL
ANTHROPOGENIC
CULTURAL

MICRO INTERVENTIONS

UNDERSTANDING A TERRITORY WITH
HISTORY IN GOLD EXPLOITATION
POPULATION INFORMATION AND AWARENESS
CREATING ACCESSIBILITY
TOURISM INTEGRATION
INDUSTRIAL HERITAGE MANAGEMENT
GREENING ACTIONS
INTERDISCIPLINARY COLLABORATION

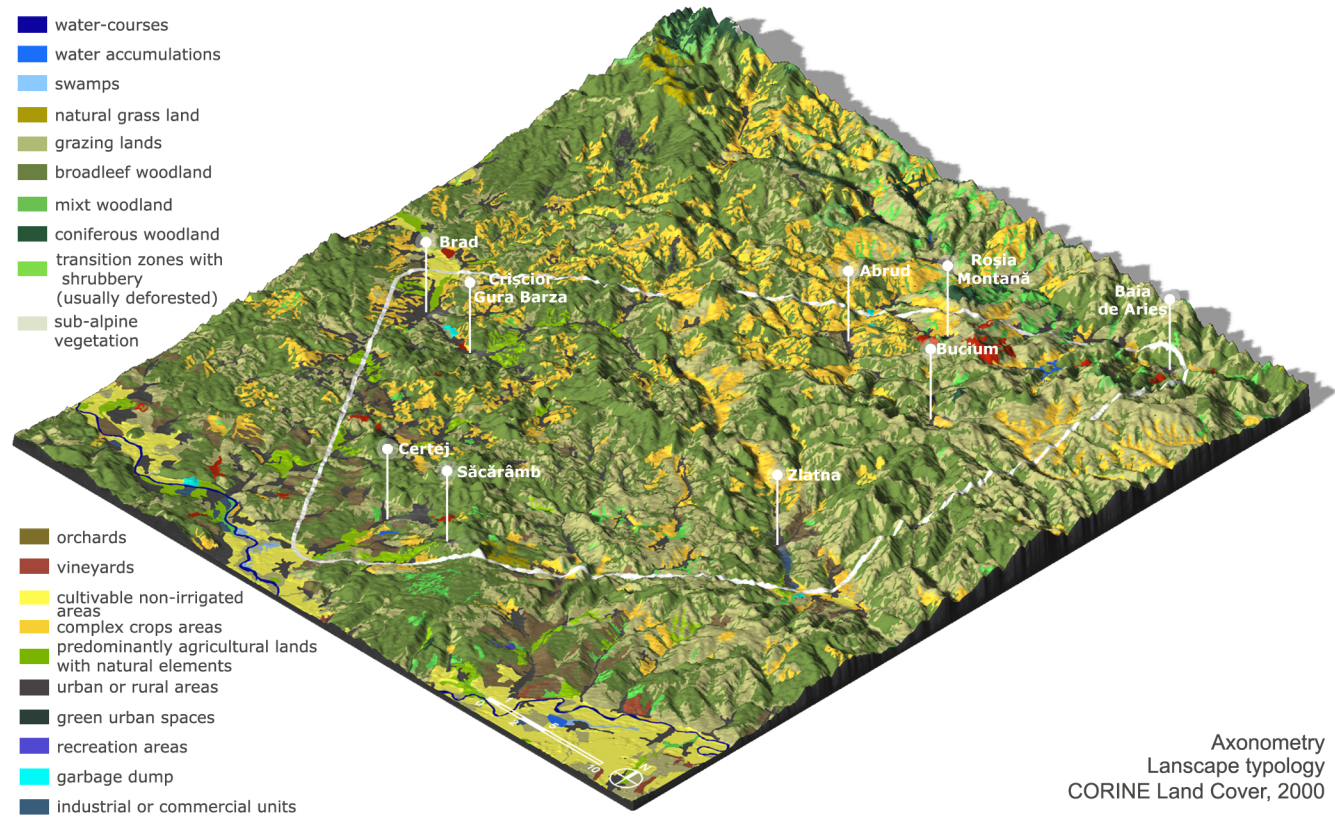


Axonometry

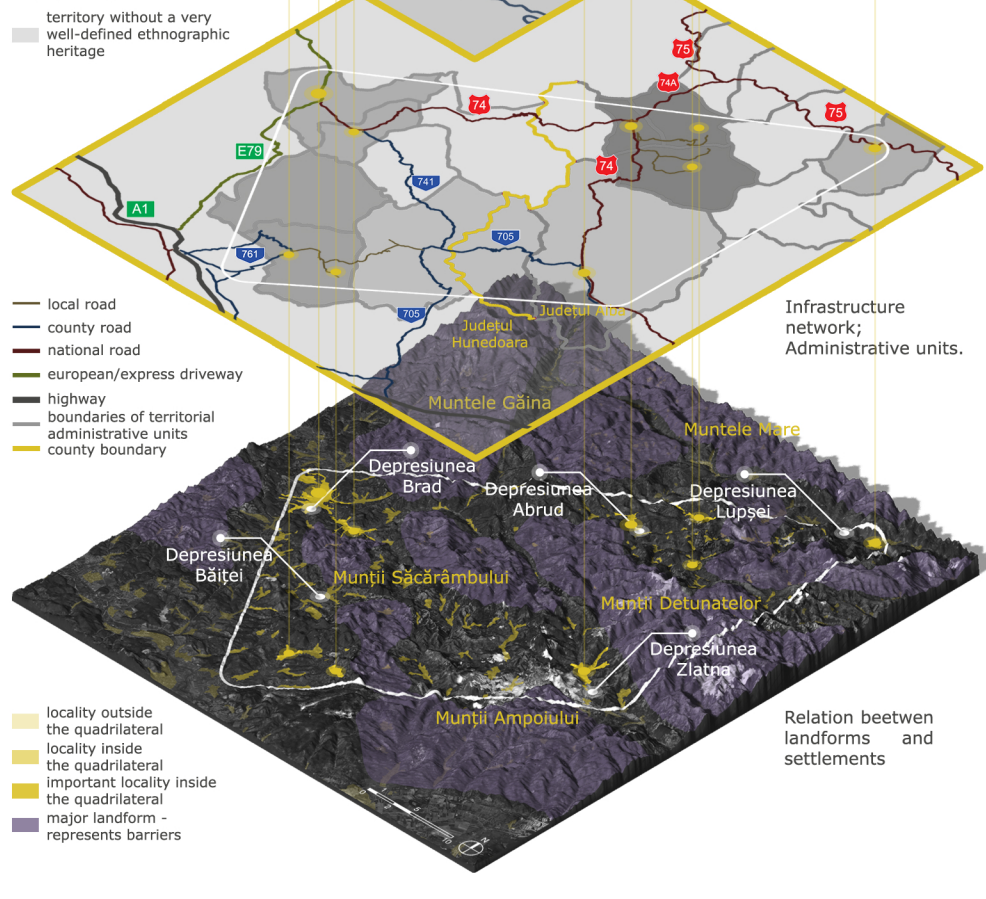
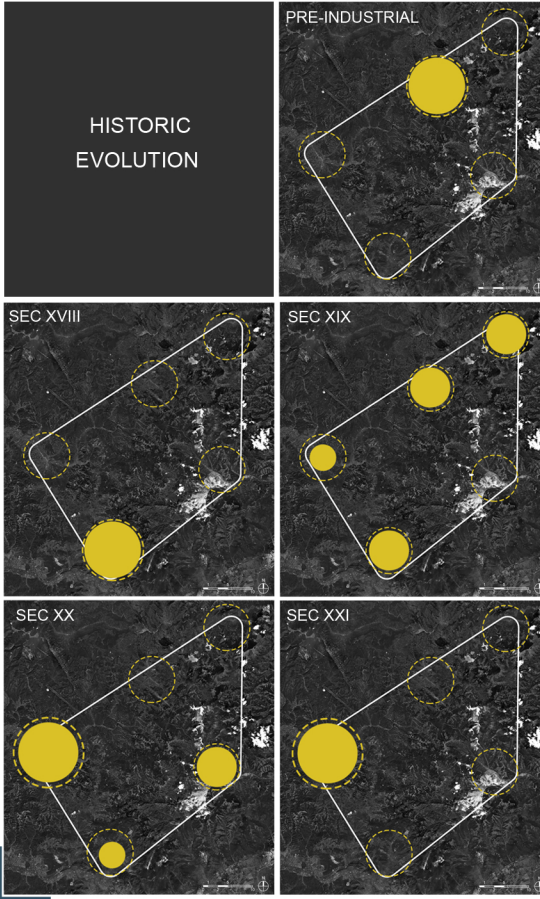


Industrial segregation
and the development
of regional sub-
systems

Major hydrographic
basins corelated with
ethnographic regions



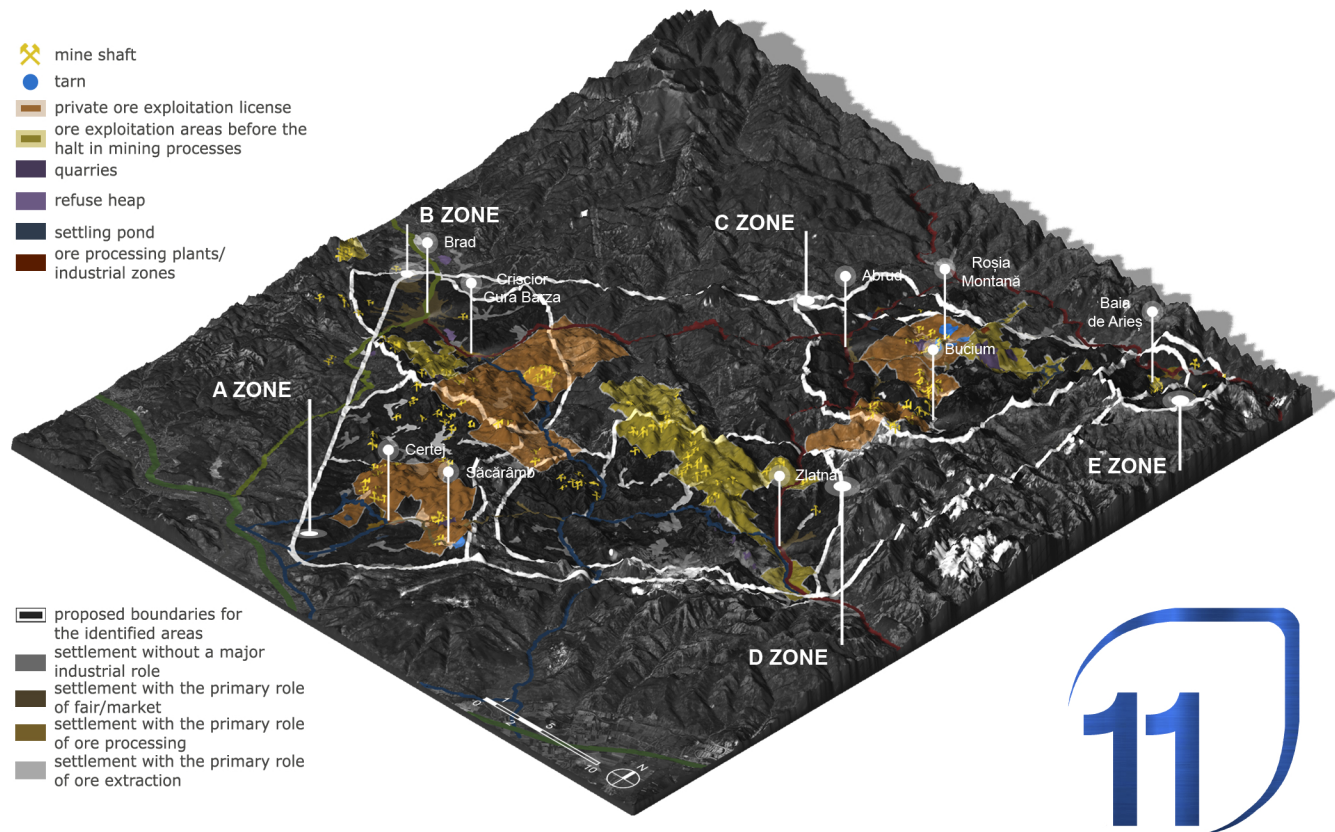
Axonometry
Landscape typology
CORINE Land Cover, 2000



Infrastructure
network;
Administrative units.

Relation between
landforms and
settlements

CONCLUDING THE ANALYSIS, DISTINCT AREAS WITH A CLEAR IDENTITY
AND PARTICULAR CHARACTERISTICS CAN BE ESTABLISHED



proposed boundaries for
the identified areas
settlement without a major
industrial role
settlement with the primary role
of fair/market
settlement with the primary role
of ore processing
settlement with the primary role
of ore extraction



STEP 1
IDENTIFY WITH THE WHOLE

ESTABLISH A LOCAL ADMINISTRATION IN ZLATNA (D REGION) TO COORDINATE ACTIONS FROM THE TWO NATIONAL COUNTIES THAT CONTAIN THE GOLDEN QUADRILATERAL, IN ORDER TO CREATE AND EFFICIENTLY INSITUTE A COHERENT SET OF POLICIES.

CREATE POLICIES TO ENSURE SOCIAL AND ECONOMIC SAFETY AND TO REDUCE ENVIRONMENTAL IMPACT OF MINE WASTE.

(Sustainable development goals: 1, 3, 6, 10, 11, 12, 16, 17)

STEP 2
COOPERATE

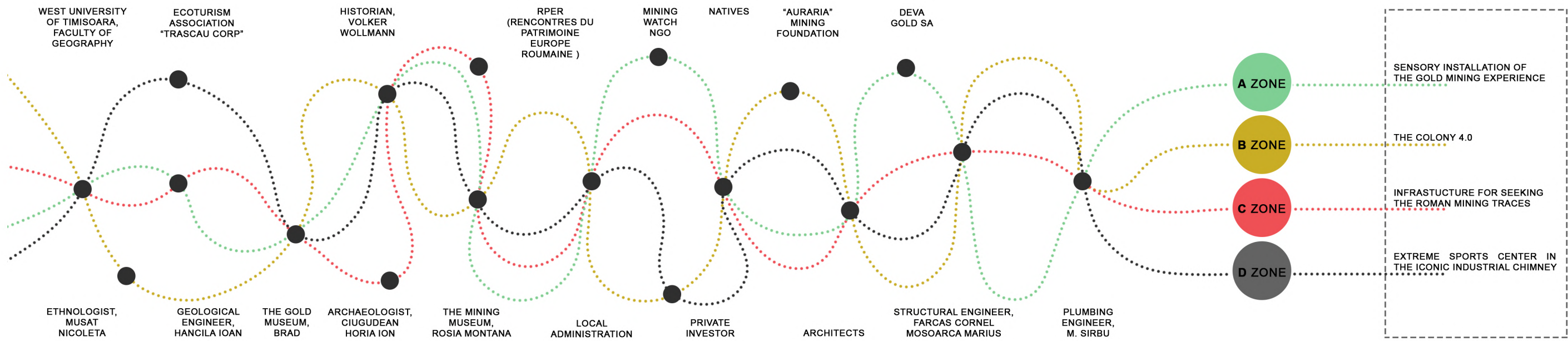
REACTIVATE THE ROUTES OF GOLD FREIGHT, PROCESSING AND TRADE FROM THE 18th CENTURY TILL THE 21st CENTURY BY CREATING VIA GOLDEN QUADRILATERAL. THE PURPOSE IS TO PROTECT AND SAFEGUARD THE NATURAL AND CULTURAL HERITAGE, AND TO PROVIDE SUSTAINABLE PROSPERITY.

(Sustainable development goals: 3, 11)

STEP 3
ADD UNIQUE VALUE

STRENGTHEN THE QUALITY OF THE WHOLE BY USING THE **UNIQUE CHARACTER** OF EACH ZONE:
A ZONE - NATURAL AND MYTHICAL,
B ZONE - INDUSTRIAL,
C ZONE - HISTORICAL AND MEMORIAL,
D ZONE - ADMINISTRATIVE.

(Sustainable development goals: 3, 11)



CITIES

- 1 ROSIA MONTANA
- 2 ABRUD
- 3 BUCIUM
- 4 CAMPENI
- 5 BAIJA DE ARIES
- 6 IZVORU AMPOIULUI
- 7 ZLATNA
- 8 ALMASU MARE
- 9 ALMASU MIC
- 10 CRISCIOR
- 11 BRAD
- 12 BALSU
- 13 SACARAMB
- 14 CERTEJ

PARKS, RESERVATIONS AND NATURAL MONUMENTS:

- 1 LIMESTONES FROM MAGURA HILL, 120 ha
- 2 SACARAMB'S KNOLLS, 13 ha
- 3 MADA'S GORGE, 10 ha
- 4 GLOD'S GORGE
- 5 CIB'S GORGE, 15 ha
- 6 LIMESTONES FROM VALEA MICA, 1 ha
- 7 BULBUCI STONE, FENES, 3 ha
- 8 CAPRA'S GORGE, FENES, 15 ha
- 9 DAFFODIL MEADOW, NEGRILEASA, 5 ha
- 10 DETUNATA FLOCOASA, BUCIUM, 5 ha
- 11 DETUNATA GOALA, BUCIUM, 24 ha
- 12 RAVEN'S STONE, ROSIA MONTANA, 5 ha
- 13 DESPICATA STONE, ROSIA M., 0,20 ha
- 14 VULCAN MOUNTAIN
- 15 SARITOARE WATERFALL, STANIJA

NATURA 2000 SITES (SCI):

- 1 ROSCI0110 - BAITA'S KNOLLS, 274 ha
- 2 ROSCI0029 - MADA, GLOD & CIB'S GORGE, 45 ha
- 3 ROSCI0253 - TRASCAU, 50.064 ha
- 4 ROSCI0121 - VULCAN MOUNTAIN, 5 ha

NATURA 2000 SITES (SPA):

- 1 ROSPA0132

AREAS THAT NEED PROTECTION (ZP)

- 1 MURES AREA
- 2 APUSENI AREA (BRAD - BIHOR MOUNTAINS)
- 3 ARIES VALLEY AREA

NATURAL SCIENCES COLLECTIONS

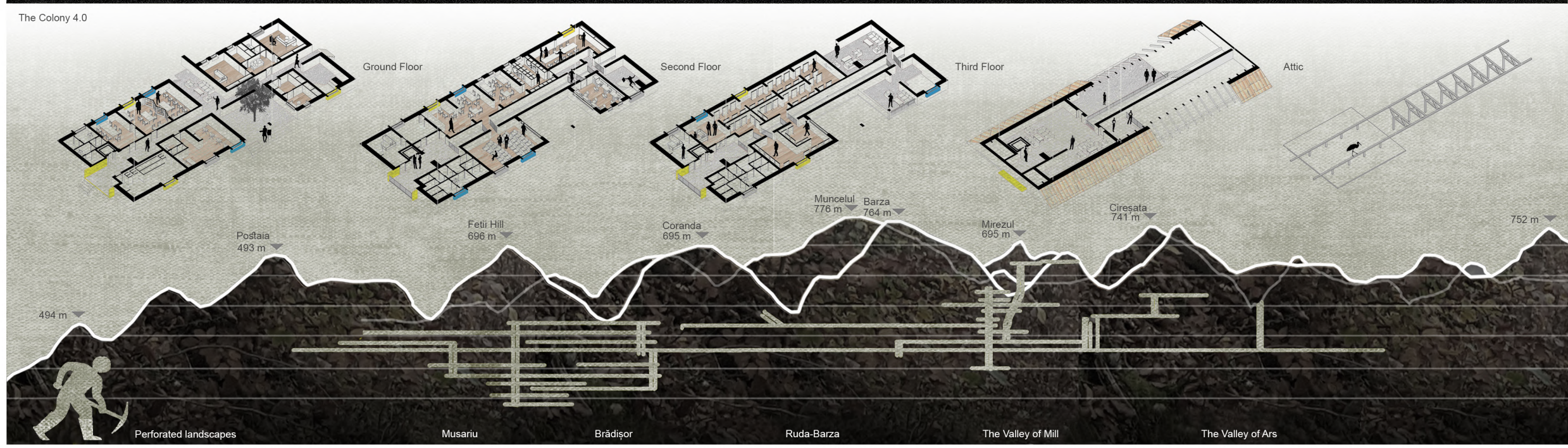
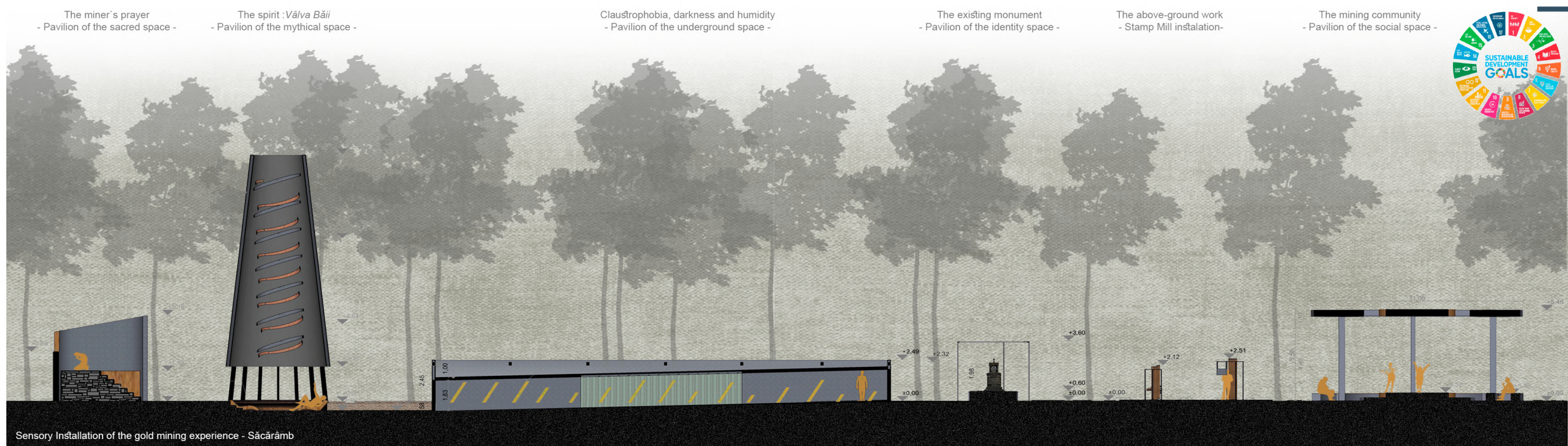
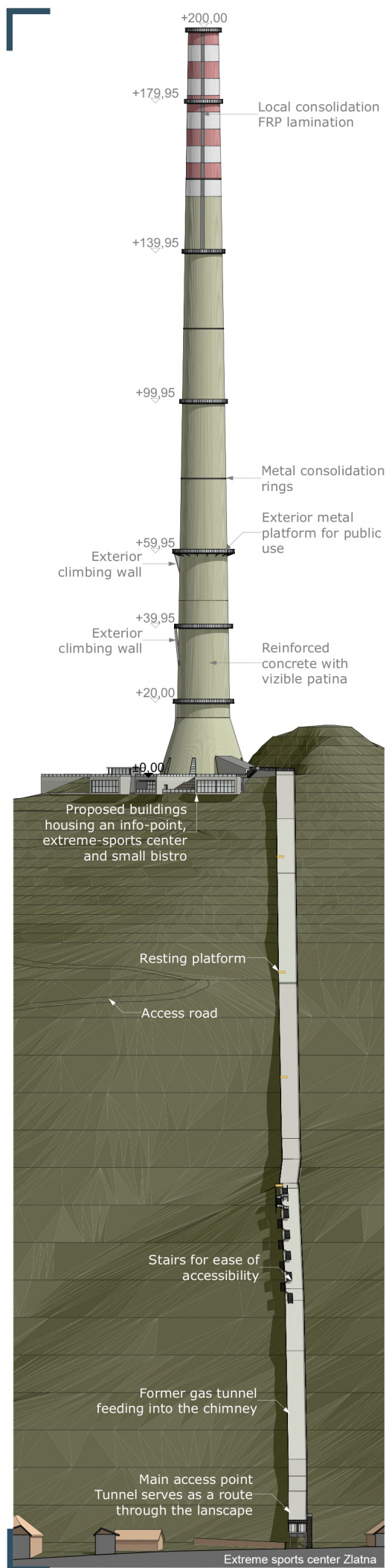
- 1 THE GOLD MUSEUM, BRAD
- 2 THE MINING MUSEUM, ROSIA MONTANA
- 3 THE MINERS' MUSEUM, BUCIUM
- 4 THE MINING MUSEUM, CERTEJ

MEMORIAL PLACES

- 1 CRISAN MEMORIAL HOUSE, RIBITA
- 2 AVRAM IANCU MEMORIAL HOUSE, BAIJA DE CRIS
- 3 IOAN BUTEANU MEMORIAL HOUSE, ABRUD
- 4 IOAN SULUTIU MEMORIAL HOUSE, ABRUD
- 5 IOAN BOERIU MEMORIAL HOUSE, ABRUD
- 6 ALEXANDRU CIUREA MEMORIAL HOUSE, ABRUD
- 7 AVRAM IANCU MUSEUM
- 8 HOREA MUSEUM
- 9 ARCHAEOLOGICAL COLLECTION, ZLATNA

ETHNOGRAPHIC COLLECTIONS

- 1 THE ETHNOGRAPHIC MUSEUM, BRAD
- 2 THE TEXTILE MUSEUM, BAITA
- 3 THE ETHNOGRAPHIC EXHIBITION, CIURULEASA
- 4 THE ETHNOGRAPHIC EXHIBITION, BUCIUM SASA
- 5 THE ETHNOGRAPHIC MUSEUM "PAMFIL ALBU"



From RACHITA GALLERY... and IERUGA QUARRY
 Trace the FIR TREES and you will find where the IERUGA QUARRY ends. 600 meters.
 Then discover the layers of the ROAD going down in the subterranean. 16 steps.
 While seeking the HYDRAULIC network, don't forget to take one last look at the IERUGA QUARRY. 40m deep notch. VULCOI Mountain.
 Start all over again. DISCOVER THE TRACES OF ROMAN GOLD MINING SYSTEM IN BUCIUM VALLEY

11

