



^ FARRINGDON ROAD IN LONDON
the former fleet river has turned into a sewer



^ CREATING WINDOWS ALONG THE FLEET VALLEY
the former course of the fleet river shown as a blue dotted line; the current fleet sewer shown in yellow

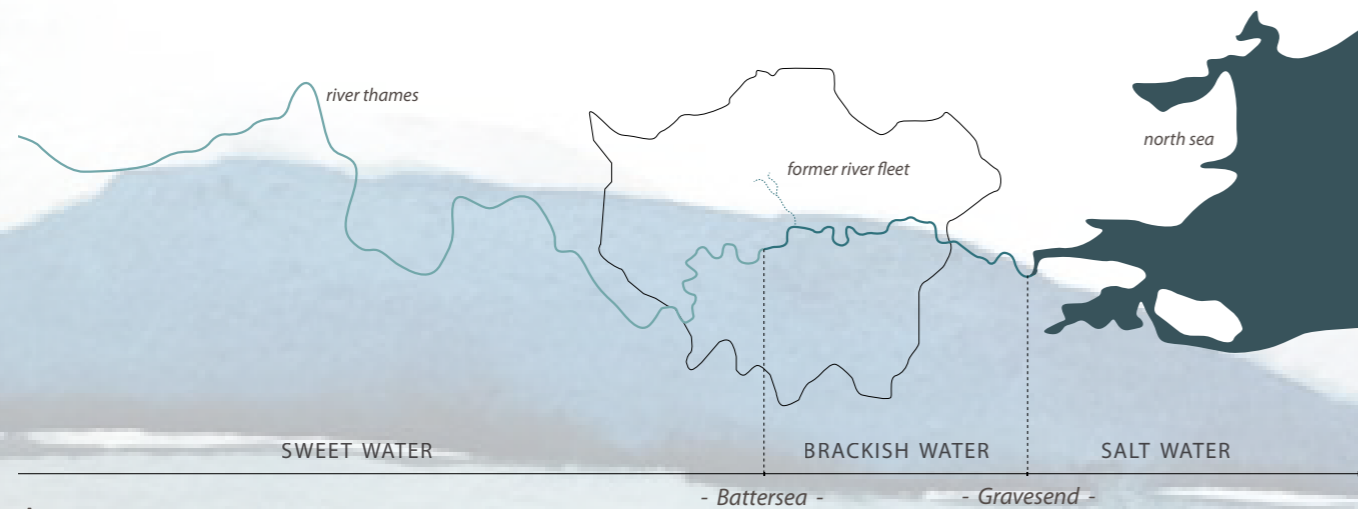
Country / City
University / School
Academic year
Title of the project
Authors

The Netherlands / Amsterdam
Amsterdam Academy of Architecture
graduation year
Nature is Under your Feet
Charlotte van der Woude



TECHNICAL DOSSIER

Title of the project **Nature is Under your Feet**
Authors **Charlotte van der Woude**
Title of the course **Graduation Project**
Academic year **2018 - 2019**
Teaching Staff **Mirjam Koevoet, Ricky Rijkenberg, Paul Achterberg**
Department/Section/Program of belonging **Landscape Architecture**
University/School **Amsterdam Academy of Architecture**



^ THE RIVER THAMES ESTUARY

Written statement, short description of the project in English, no more than 250 words

For those living in the city who are searching for nature don't need to look far. Underneath our cities we can discover hidden landscapes that offer great opportunity for special and vulnerable biotopes. The project 'Nature is Under your Feet' focuses on the city of London, where many of the former tributaries of the Thames are now buried beneath the city. These small side rivers were once the starting point for people to settle down, but because of heavy pollution in the industrial era, they have been turned into hidden brick sewage systems. Focussing on one of these sewers, the project aims to find new ways of connecting the city with its subterranean landscape. After turning one of the historical sewers – the Fleet Sewer – into a separated, clean watercourse, a series of six carefully chosen cut-outs have been designed, where day-light and fresh air is allowed to come in. These 'windows' not only let people discover the underground landscape of the city, they also provide unique conditions for a fragile nature that can flourish without the disturbance of the hectic urban life on top. From river source to river outlet, the sewer sinks deeper and deeper into the soil, which causes every 'window' to have its own specific characteristics and habitat. 'Nature is Under your Feet' aims to discover if the hidden structure of the Fleet Sewer could be a chance to create a 'new nature'. One that cannot survive the harsh city life on top, but which can facilitate a whole new type of habitat: a fragile nature to be discovered under your feet.

For further information
Máster d'Arquitectura del Paisatge -DUOT - UPC

T: + 34 93 401 64 11 / +34 93 552 0842
Contact via email at: biennal.paisatge@upc.edu

Máster d'Arquitectura del Paisatge -DUOT - UPC
ETSAB- Escola Tècnica Superior
d'Arquitectura de Barcelona
Avenida Diagonal, 649 piso 5
08028 Barcelona-Spain



CLIMATE CHANGE AGAIN

11th International Biennial Landscape Barcelona

Barcelona September 2020
SCHOOL PRIZE

HAMPSTEAD HEATH | RIVER SOURCE
the wilderness' spring



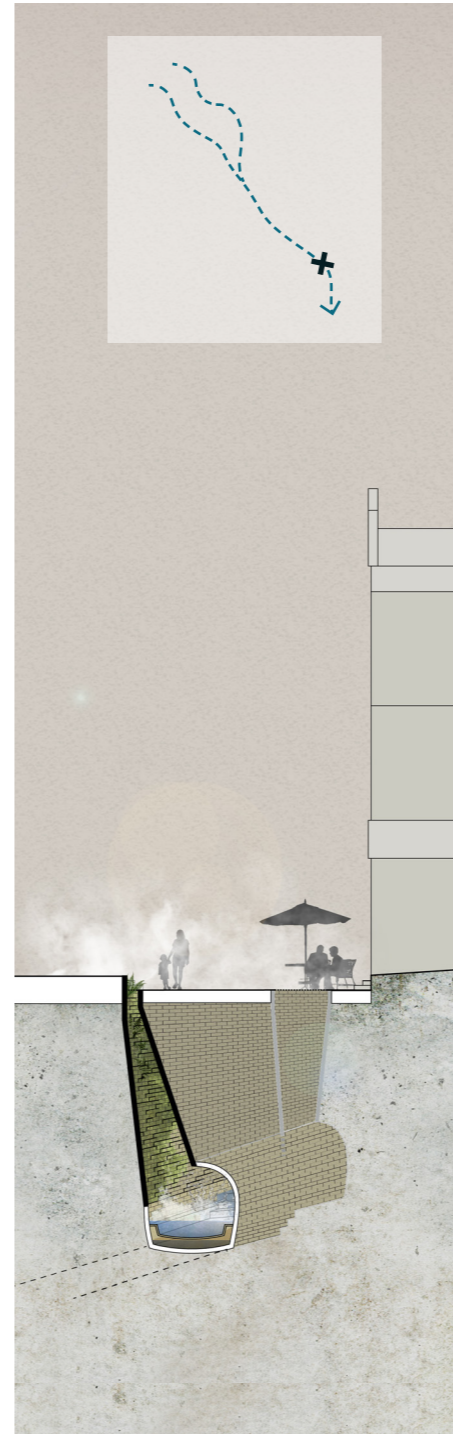
KENTISH TOWN | RIVER JOINT
Camden's rain gardens



ST. PANCRAS OLD CHURCH | HOLY RIVER
the church and the holy well reconnected



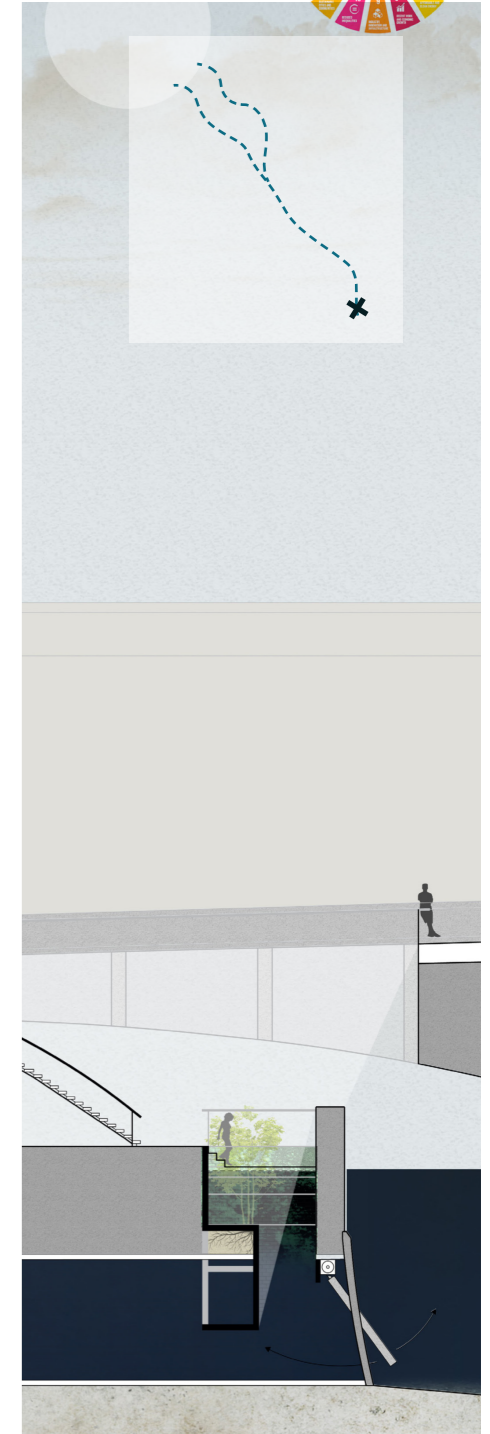
RAY STREET | RIVER TERRACE
the Fleet falls



HOLBORN VIADUCT | RIVER VALLEY
the bridge house reclaimed



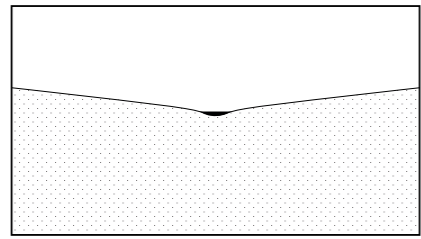
BLACKFRIARS | RIVER OUTLET
space for tides during high water



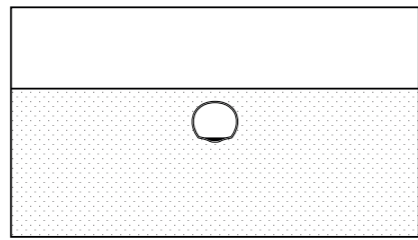
^ SECTIONS AND VISUALS SHOWING THE SIX DIFFERENT WINDOWS ALONG THE FLEET SEWER



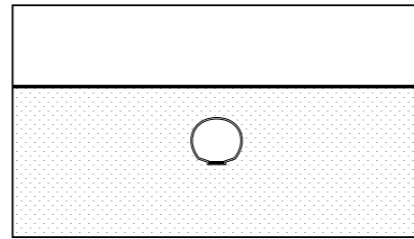
HAMPSTEAD HEATH | RIVER SOURCE
on surface



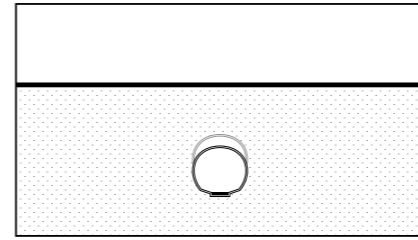
KENTISH TOWN | RIVER JOINT
1.5 meters below street level



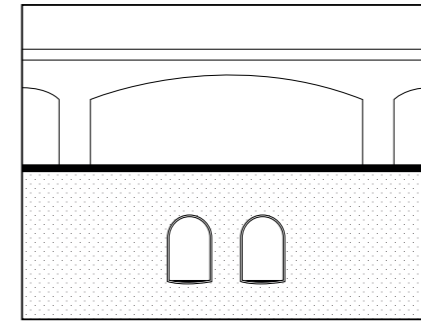
ST. PANCRAS OLD CHURCH | HOLY RIVER
3 meters below street level



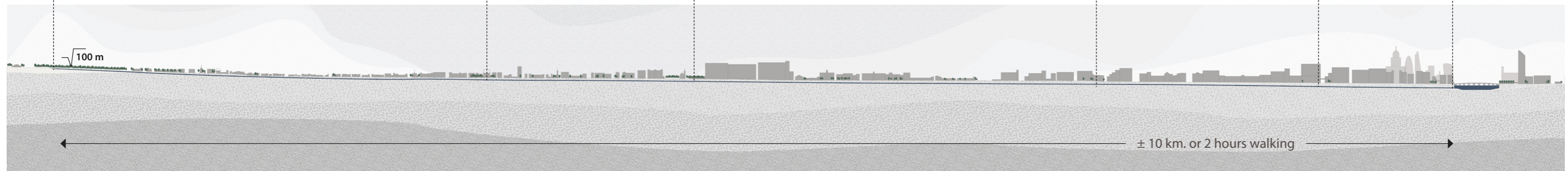
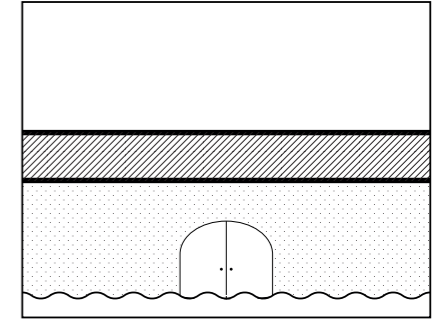
RAY STREET | RIVER TERRACE
4 - 5 meters below street level



HOLBORN VIADUCT | RIVER VALLEY
6 meters below street level



BLACKFRIARS | RIVER OUTLET
7 meters below street level

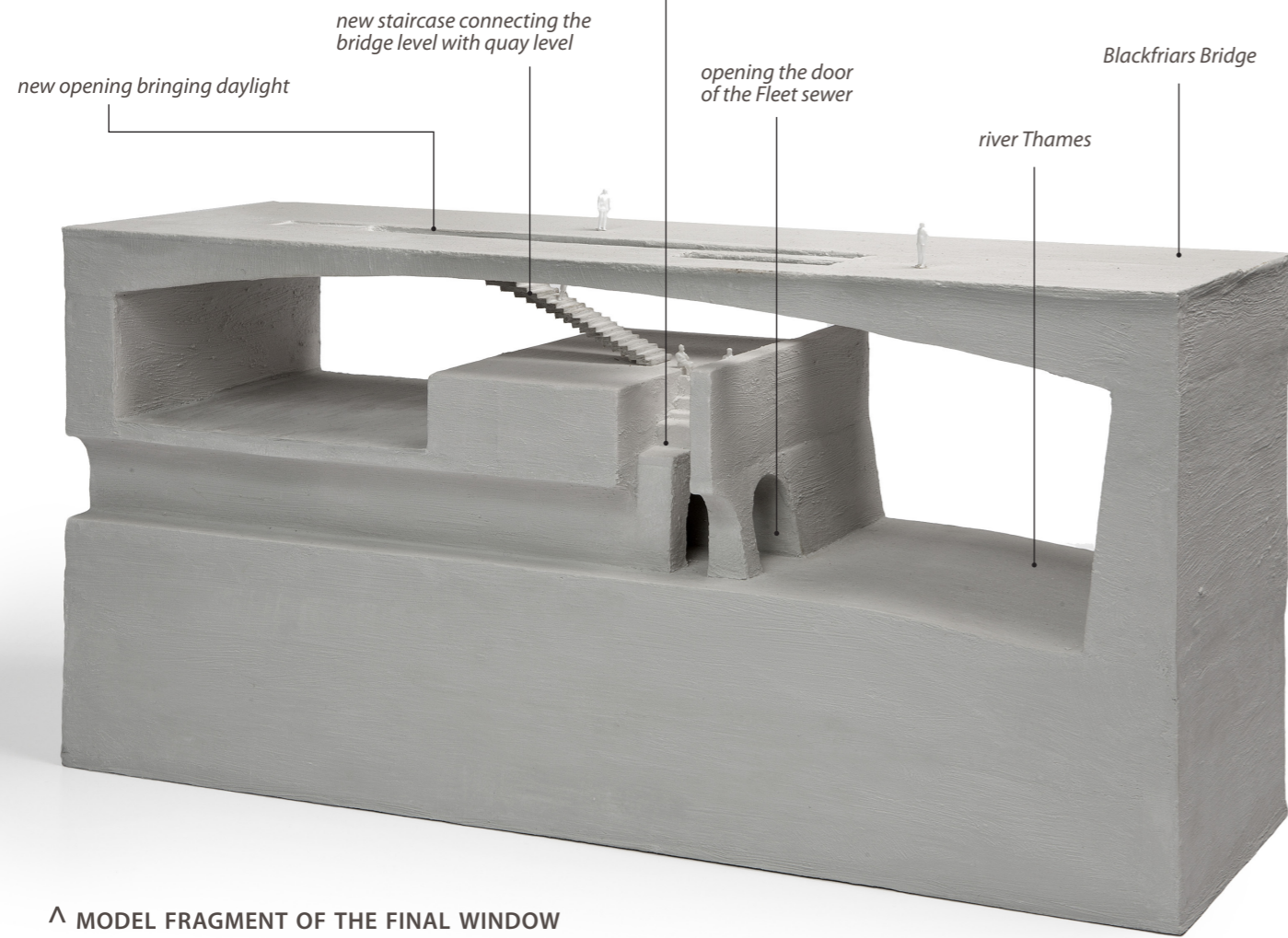


^ A PLACE FOR A FRAGILE NEW NATURE ALONG THE COURSE OF THE FLEET SEWER
each window to the underground contains its own specific conditions and habitat

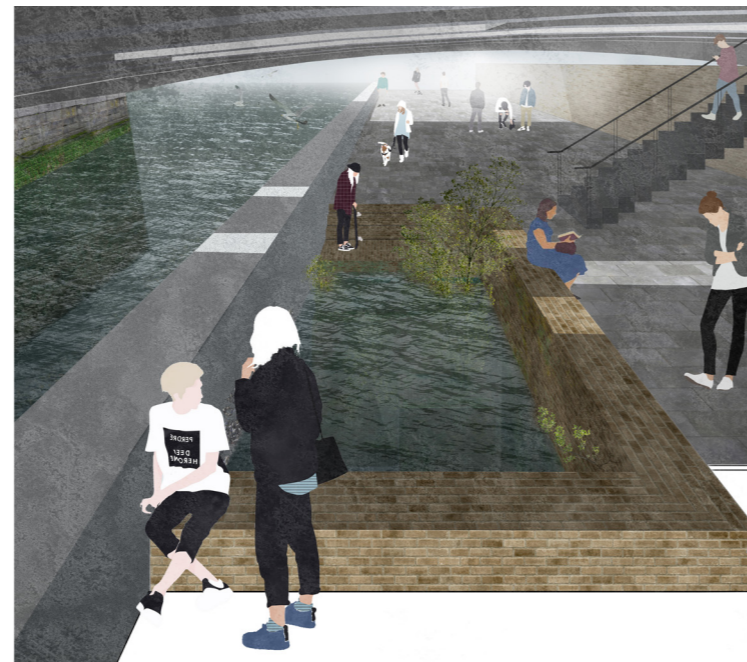


^ ZOOMED IN SECTION OF THE RIVER OUTLET
due to the many different levels on this location, people can discover a tidal nature on three different levels underground

tidal space containing species such as:



^ MODEL FRAGMENT OF THE FINAL WINDOW
reconnecting the Fleet sewer with the river Thames by letting in the tides



^ VISUALS SHOWING THE FINAL WINDOW DURING LOW AND HIGH TIDE
experiencing a tidal nature in the centre of the city

> DETAIL OF THE NEW WALLS ON TOP OF THE OLD SEWER
creating space for a new nature

the topwall will be finished off with glazed bricks to keep it free of vegetation

London Stock Bricks made from local clay

water level during high tide

plants such as these Brass Buttons can root well in the joint made of chalk cement

Populus alba can handle the salinity of the river Thames

Mitten Crabs can find shelter in the textured bricks

glazed brick showing the transition between old and new walls

existing brick wall of the Fleet sewer

water level during low tide

fish from the river Thames are able to swim upstream

