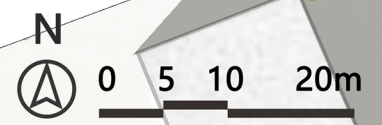


- 1 Green art corridor
- 2 Historic farmhouse
- 3 Urban farming areas
- 4 Pergola
- 5 Community table
- 6 Playground
- 7 Central lawn
- 8 Corridor of light
- 9 Small square
- 10 Party garden
- 11 Windbell garden
- 12 Warm garden
- 13 Story garden
- 14 Expression garden



Country / City      China

University / School      Beijing Forestry University

Academic year      2019

Title of the project      URBAN LIFE LABORATORY—Self-service Garden with Free Constructing Space ( Design of Grønvold Park in the Hovinbyen )

Authors      ZHUANG Hang , HU Ersi

## TECHNICAL DOSSIER

Title of the project	URBAN LIFE LABORATORY—Self-service Garden with Free Constructing Space
Authors	ZHUANG Hang , HU Ersi
Title of the course	Landscape Architecture Design Studio
Academic year	2019
Teaching Staff	WANG Xiangrong , Lin Qing
Department/Section/Program of belonging	School of Landscape Architecture
University/School	Beijing Forestry University



Written statement, short description of the project in English, no more than 250 words

The park is located in the industrial transformation area. Through free space construction and self-service garden pattern, the design realizes the common participation and common construction of different social groups. We try to set up basic space units with multi-type, flexible use and rebuildable construction, which can meet the multi-function in different times in daily life.

In addition, all kinds of social groups and individuals can choose and reserve the park space according to their needs, adjust and transform the space spontaneously to hold activities open to the public. People will be volunteers, event organizers and participants of the park. It becomes the city information center and the life possibility exploration area.

The historical culture of the match factory became the regional postcard. Series of urban agriculture exhibition and experience are formed by combining the historical farmhouses of the site, as well, agronomy and flower art festivals are held here. Those who invest in the crowdfunding can get the activity benefits.

For further information  
Máster d'Arquitectura del Paisatge -DUOT - UPC

T: + 34 93 401 64 11 / +34 93 552 0842  
Contact via email at: [biennal.paisatge@upc.edu](mailto:biennal.paisatge@upc.edu)

Máster d'Arquitectura del Paisatge -DUOT - UPC  
ETSAB- Escola Tècnica Superior  
d'Arquitectura de Barcelona  
Avenida Diagonal, 649 piso 5  
08028 Barcelona-Spain



# CLIMATE CHANGE AGAIN

11th International Biennial Landscape Barcelona

Barcelona September 2020  
SCHOOL PRIZE

### LOCATION

NORWAY  
OSLO  
HOVINBYEN

### HISTORICAL AND CURRENT ENVIRONMENTAL ELEMENTS

FARMHOUSE  
PRIMARY SCHOOL  
MIXED FUNCTION  
GREENWAY  
MATCH FACTORY

### TIDAL FLOW ANALYSIS

CHILD  
RESIDENT  
STAFF  
SHOPPER  
PASSERBY

8:00 10:00 12:00 14:00 16:00 18:00 20:00 22:00

FARMHOUSE  
MIXED FUNCTION  
RESIDENT  
SCHOOL

### REGIONAL ANALYSIS

● MAIN ROAD ● SECONDARY ROAD ● METRO ● GREEN SPACE  
 ■ RESIDENTIAL-BASED ■ BUSINESS-BASED  
 ■ PARK-BASED ■ SCHOOL-BASED

SUSTAINABLE DEVELOPMENT GOALS

### SITE ANALYSIS

● MAIN ROAD ● SECONDARY ROAD ● METRO ● PEDESTRIAN/BICYCLE PATHS  
 ● BUS STOP ■ EDUCATIONAL ■ ADMINISTRATIVE ■ RESIDENTIAL ■ COMMERCIAL ■ PARK

### DESIGN STRATEGY

1 Set up site structure  
 2 Connect and enrich the space  
 3 Build basic units of space  
 4 Diversified space reconstruction  
 5 Choose and use space freely

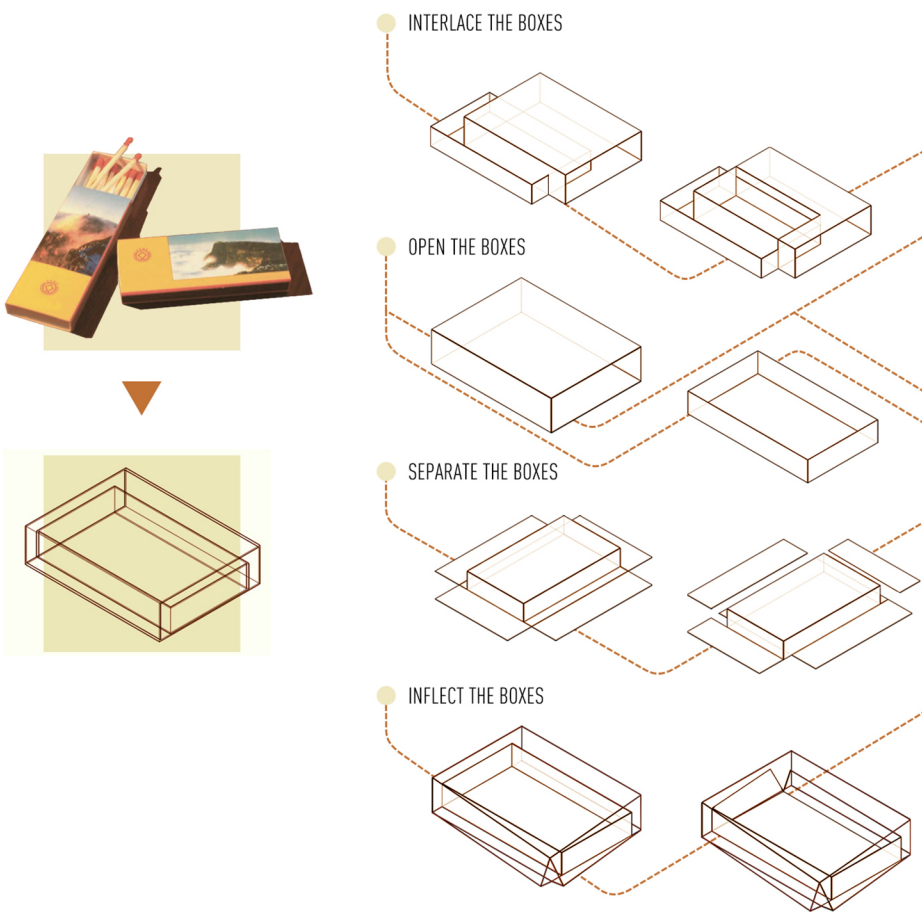
GREEN ART CORRIDOR  
 OPEN EDGE SPACE  
 LITTLE GARDENS  
 URBAN AGRICULTURE  
 CENTRAL LAWN



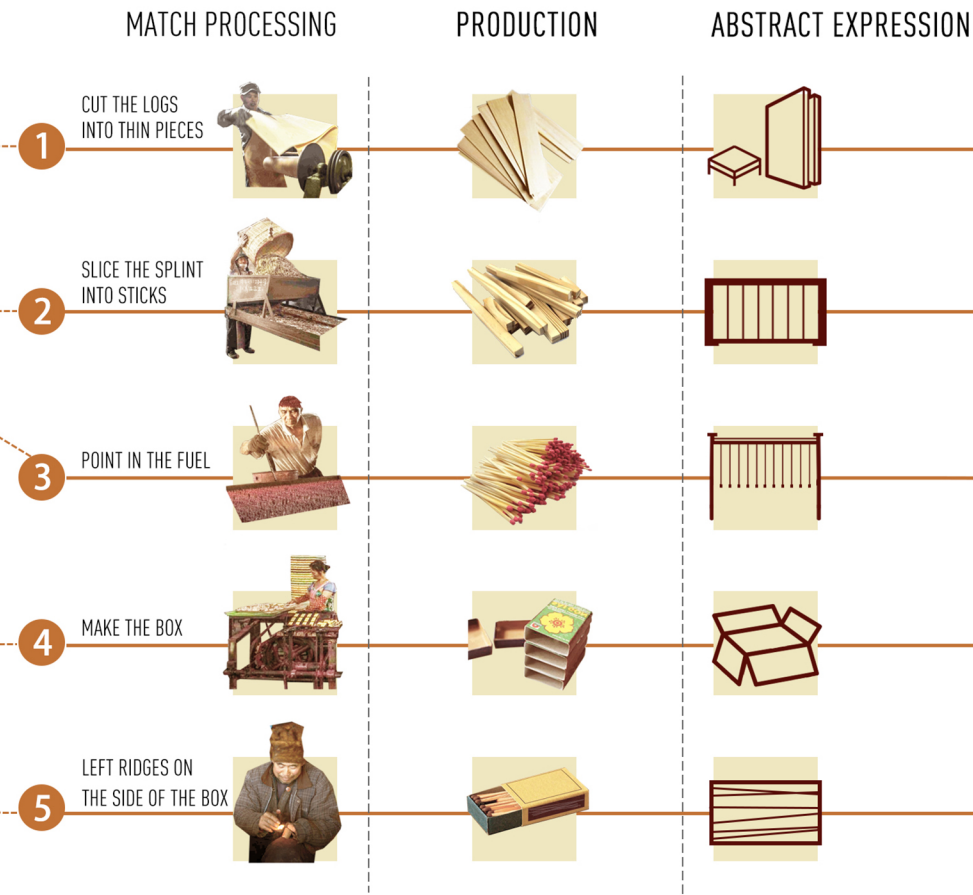


# HISTORICAL AND CULTURAL EXPRESSION

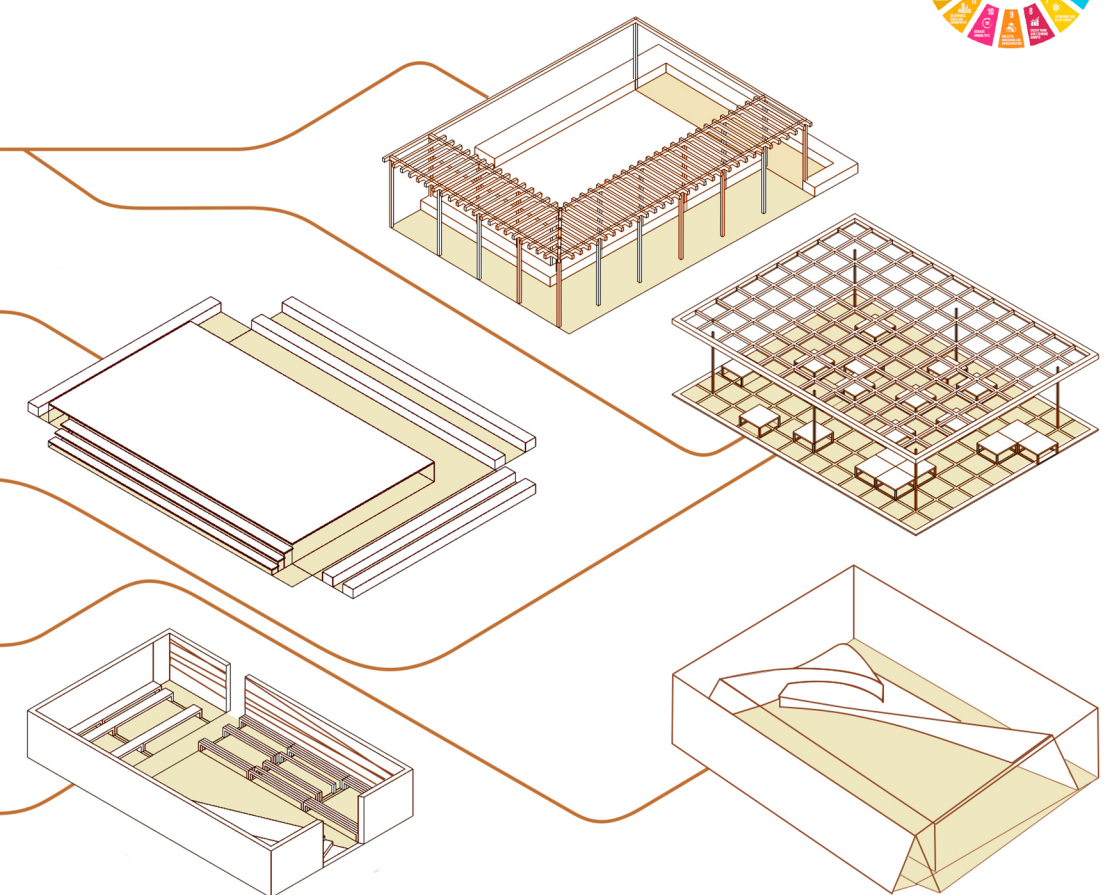
## MATCHBOX WITH FLEXIBLE SPACE



## MATCH FACTORY HISTORICAL AND CULTURAL EXPRESSION

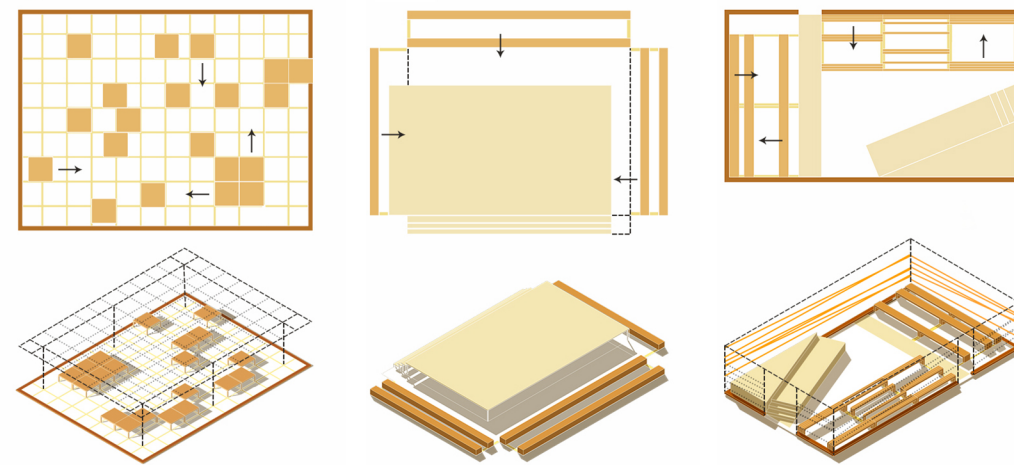


## BOX BASE FORM GENERATION



## FREE TRANSFORM SPACE

### 1 ADJUSTABLE SPACE

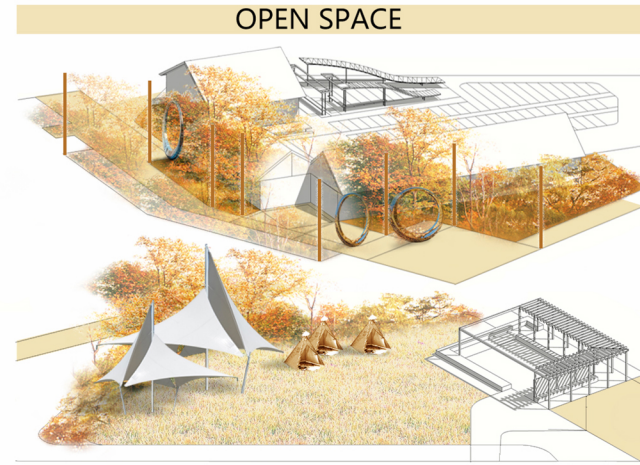


**MOVE THE BENCH**  
You can move the little bench on the track to adjust the space you need.

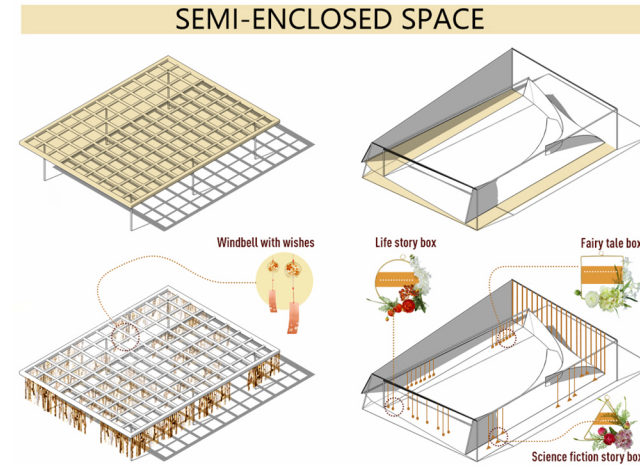
**STAGE OR TABLE**  
You can watch a show or use it as a big table.

**LIGHT UP THE WALL**  
You can adjust the brightness of the light on the wall by moving benches.

### 2 REBUILDABLE SPACE

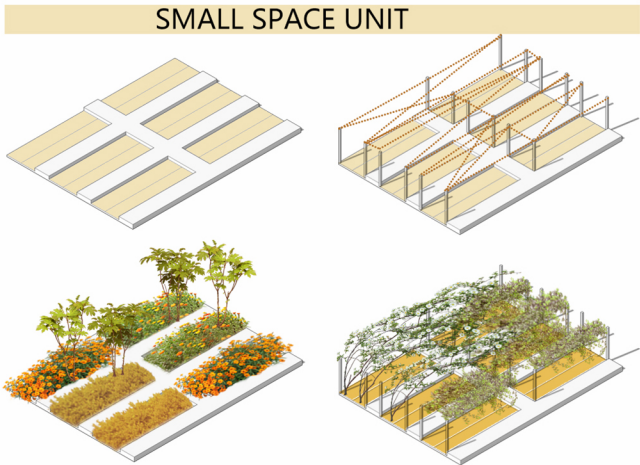


**GREEN ART CORRIDOR AND OUTDOOR THEATER**  
The open space can be transformed into a place for cultural and artistic exchange, and temporary structures and artworks can be built.



**HOPE GARDEN**  
People can hang 1000 wind chimes with their wishes written on it.

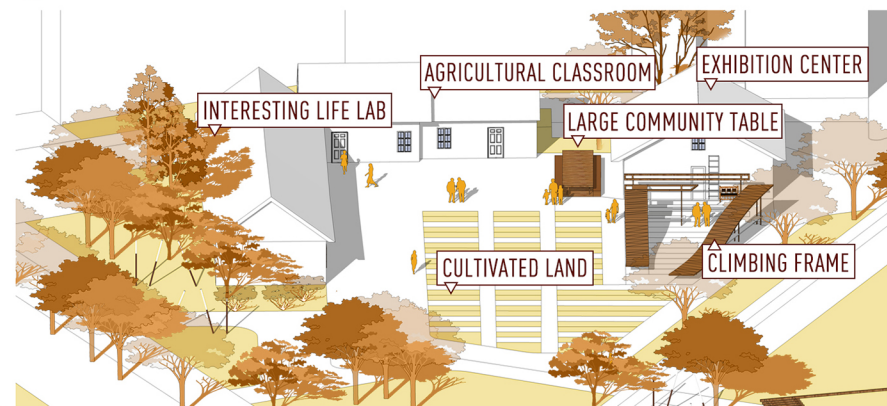
**STORY GARDEN**  
The three shelves on the side are built into different story corridors.



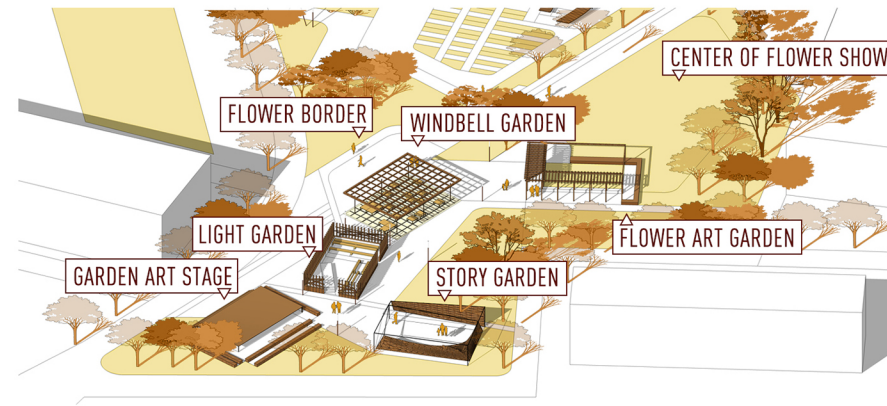
**HORTICULTURE UNIT**  
You can choose to grow fruits and vegetables or flowers.

**PLANT CLIMBING PLANTS**  
Climbing plants such as beans, grapes, wisteria or clematis can be grown here.

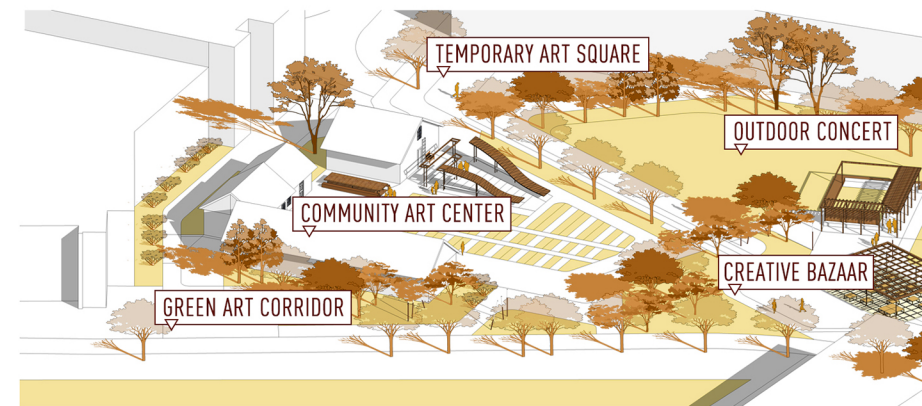
### 3 COMBINED SPACE UTILIZATION



AGRONOMIC SPACE GROUP



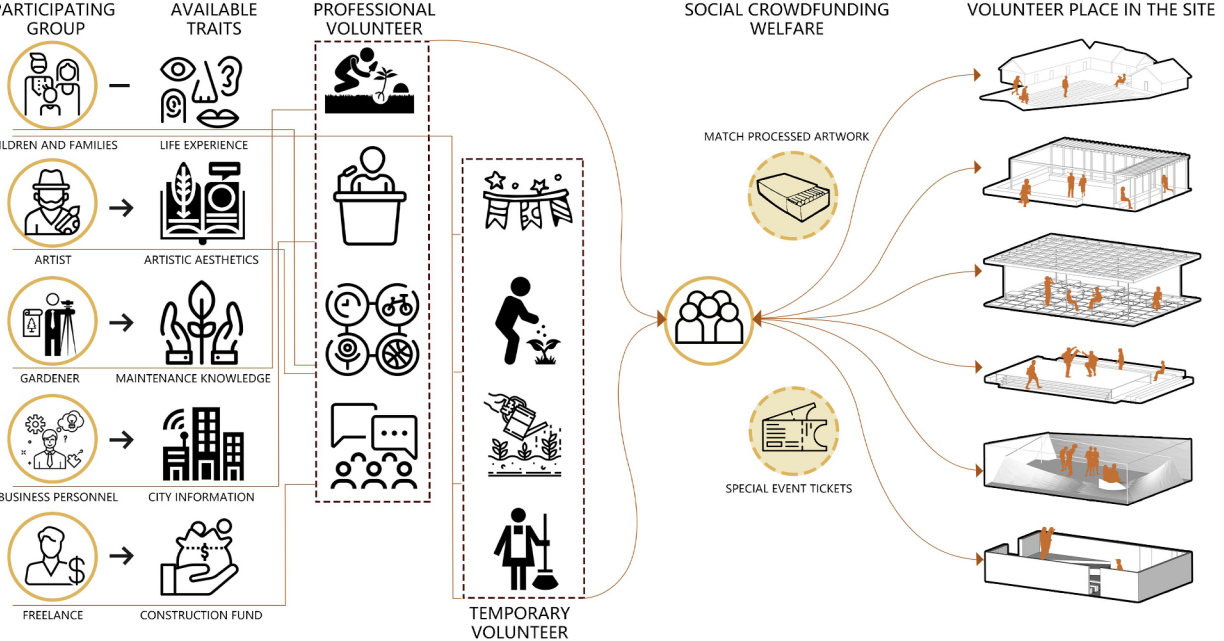
SPACE GROUP OF GARDEN FESTIVAL



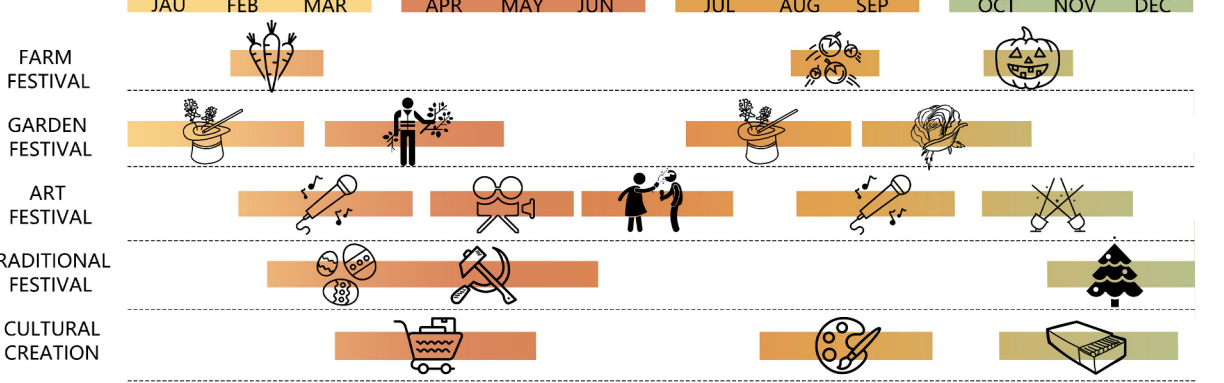
SPACE GROUP OF ART FESTIVAL



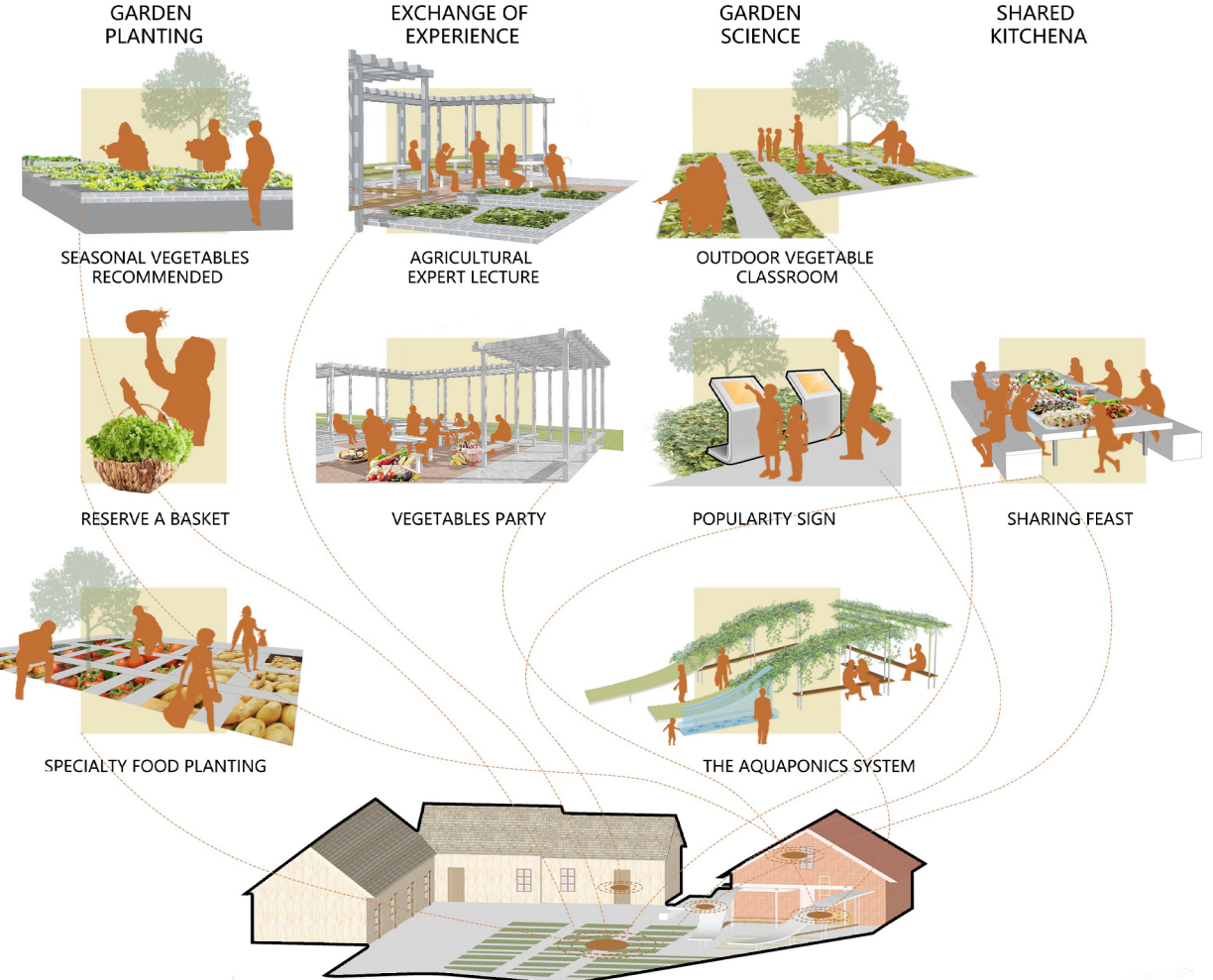
# PUBLIC PARTICIPATION



# FESTIVAL PLANNING



# URBAN FARMING



# OPERATION MECHANISM OF SELF-SERVICE GARDEN

The image shows four screens of a mobile application for a self-service garden:

- OPTIONAL FIELD:** A map view showing various garden sites like 'Green Corridor', 'Art Festival', 'Five Gardens', and 'Planting Plot'.
- OPTIONAL TIME:** A schedule view showing activity durations: 'The activity need a few days' (2-3, 3-7, 7-10, 10-15, 15-30 days) and 'The activity need only one day' (5:00-7:00, 7:00-9:00, 9:00-11:00, 11:00-13:00, 13:00-15:00, 15:00-17:00, 17:00-19:00, 19:00-21:00, 21:00-23:00, 23:00-01:00).
- ACTIVITY DESCRIPTION:** A detailed view of an activity, including 'Hot Activities' (Farm Festival, Garden Festival, Art Festival), 'Your Activity' (Storytelling Festival), and 'Please Upload the Event Plan'.
- ACTIVITY FEEDBACK:** A view showing user feedback, including 'Sponsor 1' (Garden of May), 'Sponsor 2' (Creative Bazaar), and 'Tourist'.



# TIME EXTENSION

