



Country / City Italy, Bari

University / School Polytechnic University of Bari

Academic year 2018/2019

Title of the project Re-cycle Mola di Bari: reuse of coastal abandoned productive landscape

Authors Antonio Amoruso, Marika Colonna, Maria Giovanna Gassi, Ilenia Pompilio, Silvia Pastore, Maddalena Scalera

TECHNICAL DOSSIER

Title of the project Re-cycle Mola di Bari: reuse of coastal abandoned productive landscape
Authors Antonio Amoroso, Marika Colonna, Maria Giovanna Cassi, Ilenia Pompilio, Silvia Pastore, Maddalena Scalera
Title of the course Master degree in Architecture
Academic year 2018/2019
Teaching Staff Nicola Martinelli, Mariella Annese, Michele Montemurro, Gabriele Rossi, Aginaldo Fraddosio, Antonio Labalestra
Department/Section/Program of belonging DICAR (Department of Civil Engineering and Architecture / ICAR 21 Urban Planning)
University/School Polytechnic University of Bari



Written statement, short description of the project in English, no more than 250 words

The master thesis refers to the main question of how to re-purpose abandoned coastal productive landscape to trigger regenerative processes in poorly served and peripheral neighborhoods in Mola di Bari, one of the most important maritime apulian cities in Italy.

The site has a strong landscape identity and a specific “language” all along the 5km of the coast: low rocks, vegetation densities, nearly flat surface and microenvironments, together with hydrological elements.

In line with the 11th and 13th goals of the Agenda 2030, in accordance with the guidelines of the European Landscape Convention, the research explores the consequences of the landscape recycling process for a sustainable growth of the urban system. The outcome is the re-cropping of all the abandoned green tiny plots, integrating the large mosaic of coastal cultivations between the Country and the sea that emphasises the transition between the two. In the new scenario the recycling of little stone warehouses becomes the centre of a system including and creating new infrastructures and facilities, that serve a new green economy and let locals and visitors enjoy the beauties of the coastal and rural landscape.

For further information
Máster d'Arquitectura del Paisatge -DUOT - UPC

T: + 34 93 401 64 11 / +34 93 552 0842
Contact via email at: biennal.paisatge@upc.edu

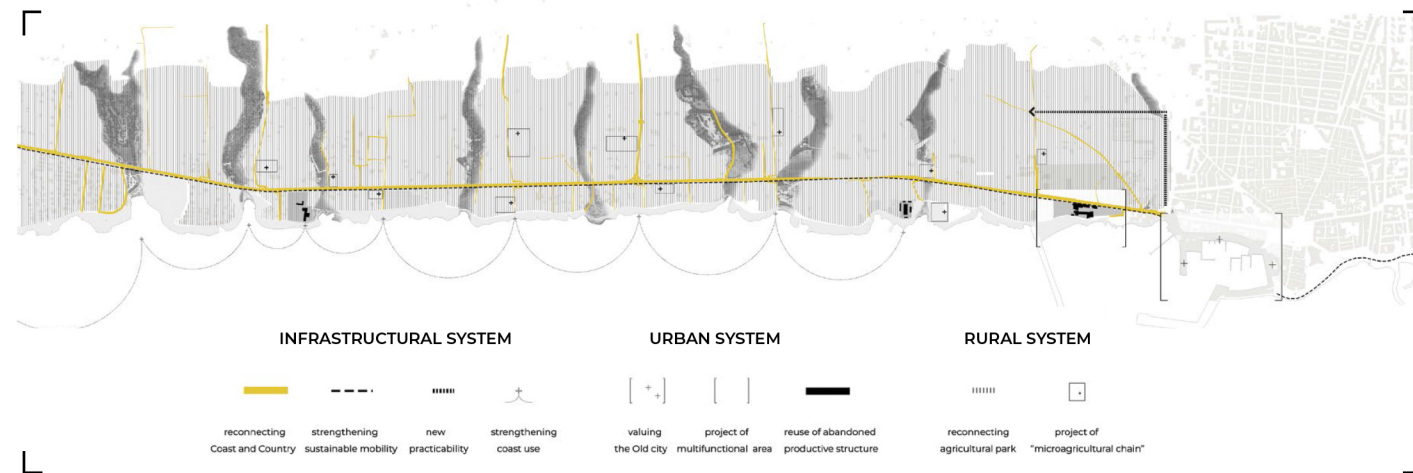
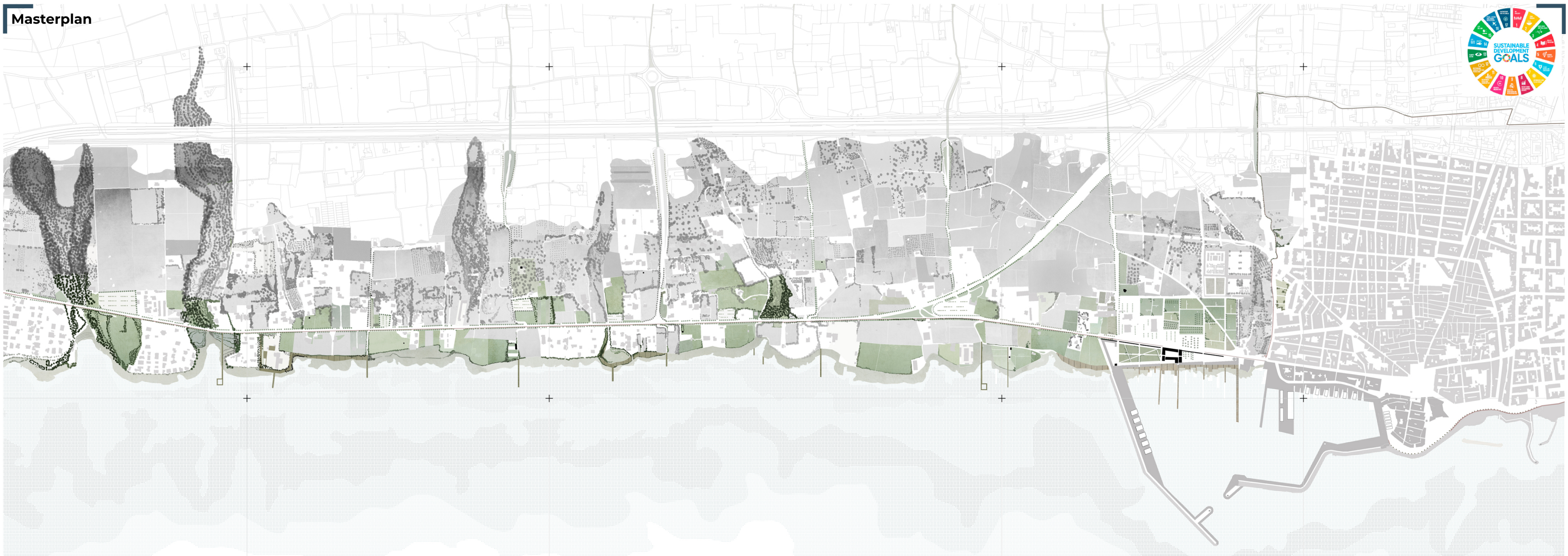
Máster d'Arquitectura del Paisatge -DUOT - UPC
ETSAB- Escola Tècnica Superior
d'Arquitectura de Barcelona
Avenida Diagonal, 649 piso 5
08028 Barcelona-Spain

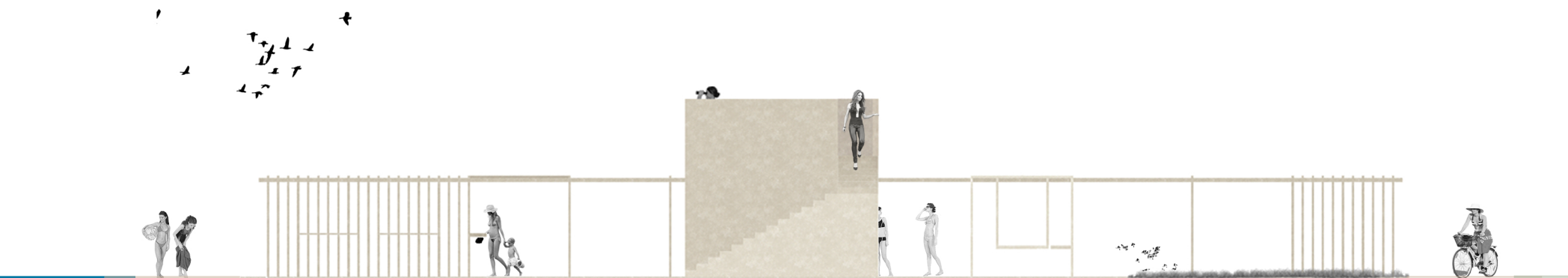


CLIMATE CHANGE AGAIN

11th International Biennial Landscape Barcelona

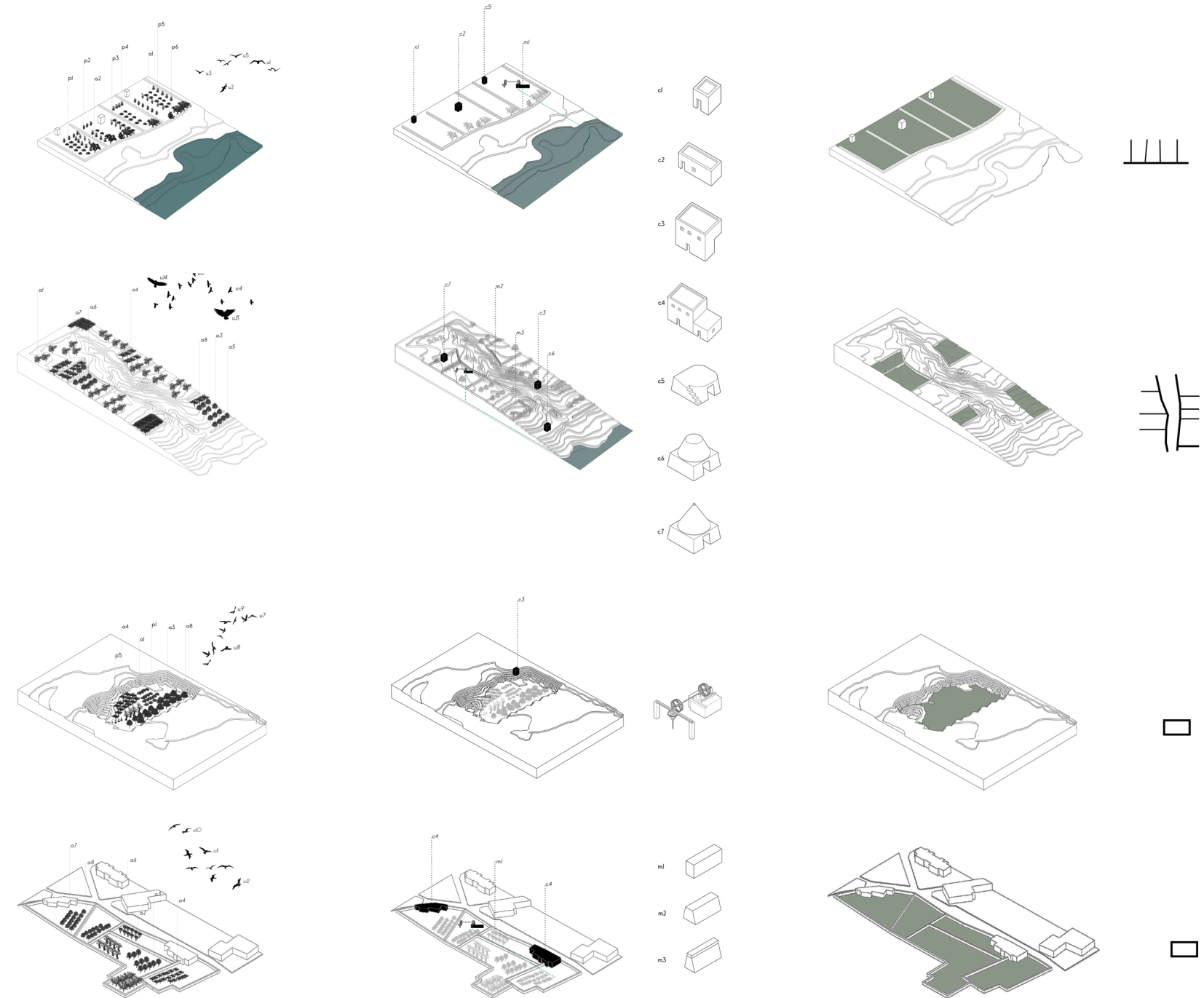
Barcelona September 2020
SCHOOL PRIZE

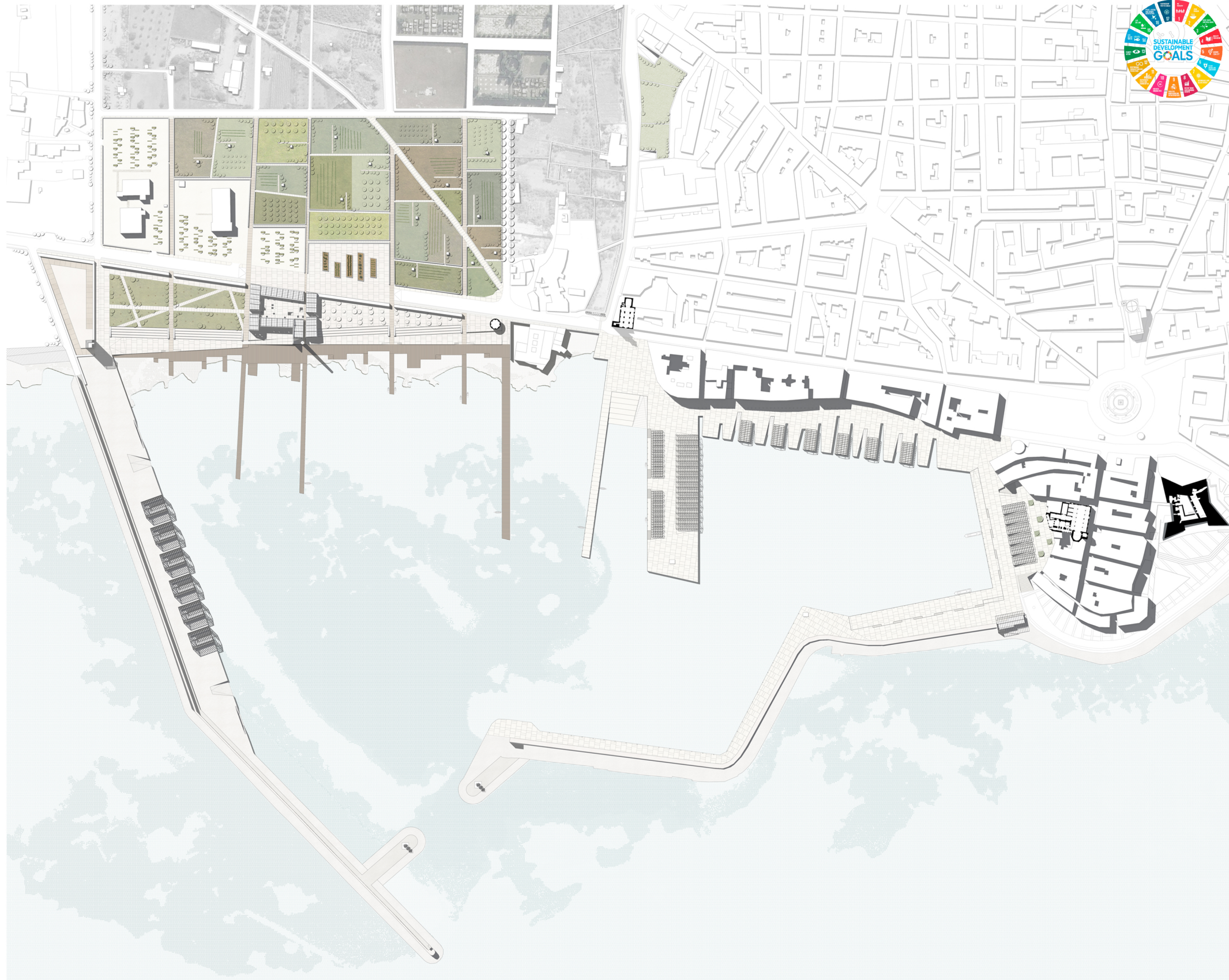




Land materials

- 01 Grass 8.30x40 cm 2
- 02 Meadow 8.30x40 cm 2
- 03 Concrete 8.30x40 cm 2
- 04 Paved 8.30x40 cm 2
- 05 Pavement 8.30x40 cm 2
- 06 Pavement 8.30x40 cm 2
- 07 Pavement 8.30x40 cm 2
- 08 Pavement 8.30x40 cm 2
- 09 Pavement 8.30x40 cm 2
- 10 Pavement 8.30x40 cm 2
- 11 Pavement 8.30x40 cm 2
- 12 Pavement 8.30x40 cm 2
- 13 Pavement 8.30x40 cm 2
- 14 Pavement 8.30x40 cm 2
- 15 Pavement 8.30x40 cm 2
- 16 Pavement 8.30x40 cm 2
- 17 Pavement 8.30x40 cm 2
- 18 Pavement 8.30x40 cm 2
- 19 Pavement 8.30x40 cm 2
- 20 Pavement 8.30x40 cm 2
- 21 Pavement 8.30x40 cm 2
- 22 Pavement 8.30x40 cm 2
- 23 Pavement 8.30x40 cm 2
- 24 Pavement 8.30x40 cm 2
- 25 Pavement 8.30x40 cm 2
- 26 Pavement 8.30x40 cm 2
- 27 Pavement 8.30x40 cm 2
- 28 Pavement 8.30x40 cm 2
- 29 Pavement 8.30x40 cm 2
- 30 Pavement 8.30x40 cm 2
- 31 Pavement 8.30x40 cm 2
- 32 Pavement 8.30x40 cm 2
- 33 Pavement 8.30x40 cm 2
- 34 Pavement 8.30x40 cm 2
- 35 Pavement 8.30x40 cm 2
- 36 Pavement 8.30x40 cm 2
- 37 Pavement 8.30x40 cm 2
- 38 Pavement 8.30x40 cm 2
- 39 Pavement 8.30x40 cm 2
- 40 Pavement 8.30x40 cm 2
- 41 Pavement 8.30x40 cm 2
- 42 Pavement 8.30x40 cm 2
- 43 Pavement 8.30x40 cm 2
- 44 Pavement 8.30x40 cm 2
- 45 Pavement 8.30x40 cm 2
- 46 Pavement 8.30x40 cm 2
- 47 Pavement 8.30x40 cm 2
- 48 Pavement 8.30x40 cm 2
- 49 Pavement 8.30x40 cm 2
- 50 Pavement 8.30x40 cm 2

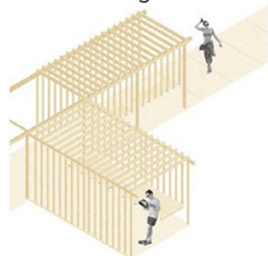




Totem



Pergolas



Warehouse



Wooden platform



Dry stone wall



Public pool

