



Country / City Italy, Bari.
University / School Polytechnic of Bari, Italy.
Academic year 2016 - 2017
Title of the project "Enhance small islands in the framework of Blue Growth: the Cheradi Islands of Taranto"
Authors Angela Benedetto, Giuseppe d'Agostino, Ambra Gravina, Rita Carmen Ingrassia, Federica Montalto, Davide Sylos Labini

TECHNICAL DOSSIER

Title of the project "Enhance small islands in the framework of Blue Growth: the Cheradi Islands of Taranto"
Authors Angela Benedetto, Giuseppe d'Agostino, Ambra Gravina, Rita Carmen Ingrassia, Federica Montalto, Davide Sylos Labini
Title of the course Master Degree in Architecture
Academic year 2016-2017
Teaching Staff Nicola Martinelli, Mariella Anese, Francesco De Filippis, Michele Montemurro, Gabriele Rossi, Francesco Ruggiero.
Department/Section/Program of belonging DICAR (Department of Civil Engineering and Architecture) - ICAR 21 Urban Planning
University/School Polytechnic of Bari, Italy.



Written statement, short description of the project in English, no more than 250 words

The present case study refers to the Cheradi archipelago in Taranto, Southern Italy. Our aim is to enhance the strong naturalness that characterizes the islands, almost abandoned long time ago, because of the difficulty to reach them. So the guidelines of our strategy are mainly to reconnect the islands to the city creating a pedestrian-cycle walkway (the "Blue Road") that follows the course of the existing breakwater barrier and to emphasize the great quality of the natural and architectural elements trying to cover the large industrial area (ENI and ILVA) close to Punta Rondinella (on the mainland). In fact, the fundamental aspect of our project is the contrast between the landscape and the strongly anthropized areas. Nature is used not only as an element of valorization of places, but also as a possibility to divide and cover, at least visually, the industrial pole adjacent to our project area. The park of Punta Rondinella has just this purpose, where some architectures of the Second World War are recycled as *mirador* and *info points*, where discover the path from the city to the islands. Through the walkway we arrive on San Pietro's Island, today partially militarized, which in addition to the strong naturalness, is characterized by an area dedicated to bath, that provides a series of services connected to the beach. At the end, the island of San Paolo closes this ideal path. The historical structures of the Island are reused as museums and integrated with new structures with the function of nursery for the local marine fauna.

For further information
Máster d'Arquitectura del Paisatge -DUOT - UPC

T: + 34 93 401 64 11 / +34 93 552 0842
Contact via email at: biennal.paisatge@upc.edu

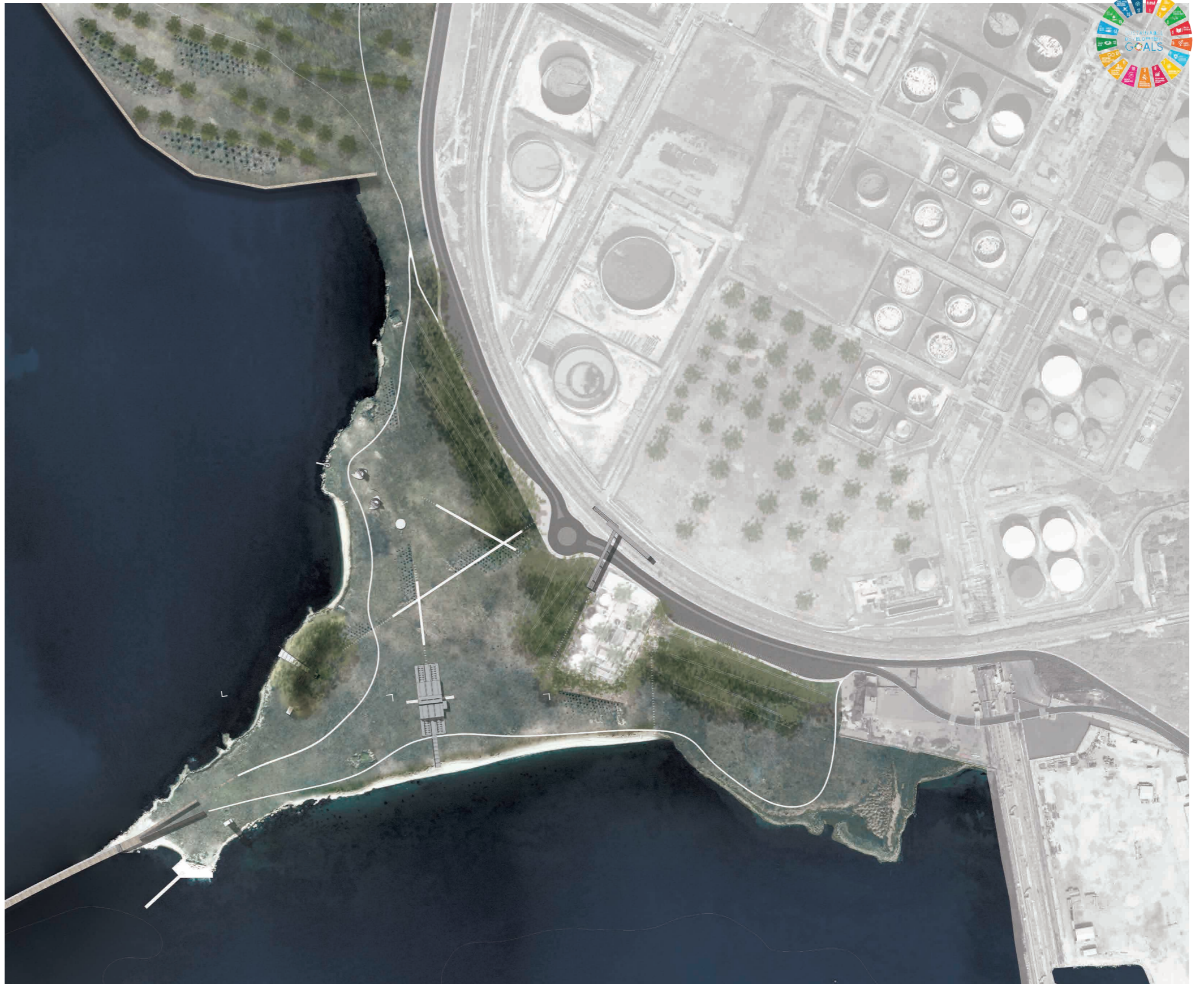
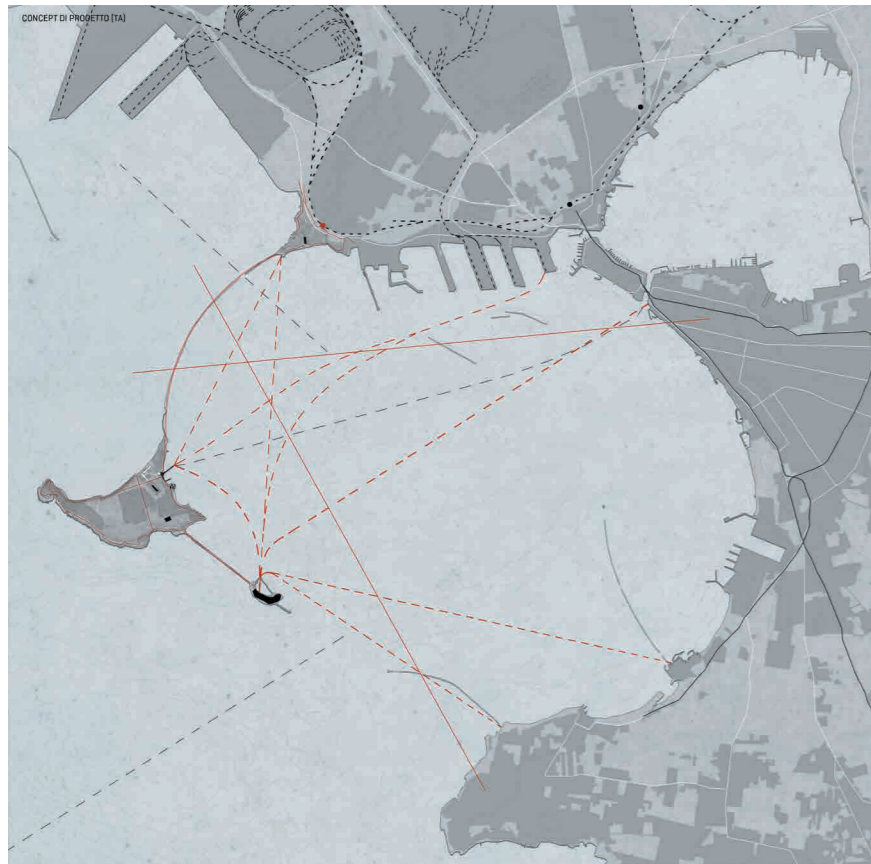
Máster d'Arquitectura del Paisatge -DUOT - UPC
ETSAB- Escola Tècnica Superior
d'Arquitectura de Barcelona
Avenida Diagonal, 649 piso 5
08028 Barcelona-Spain

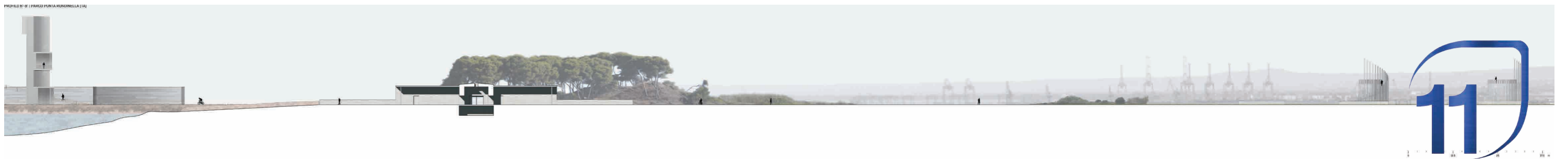
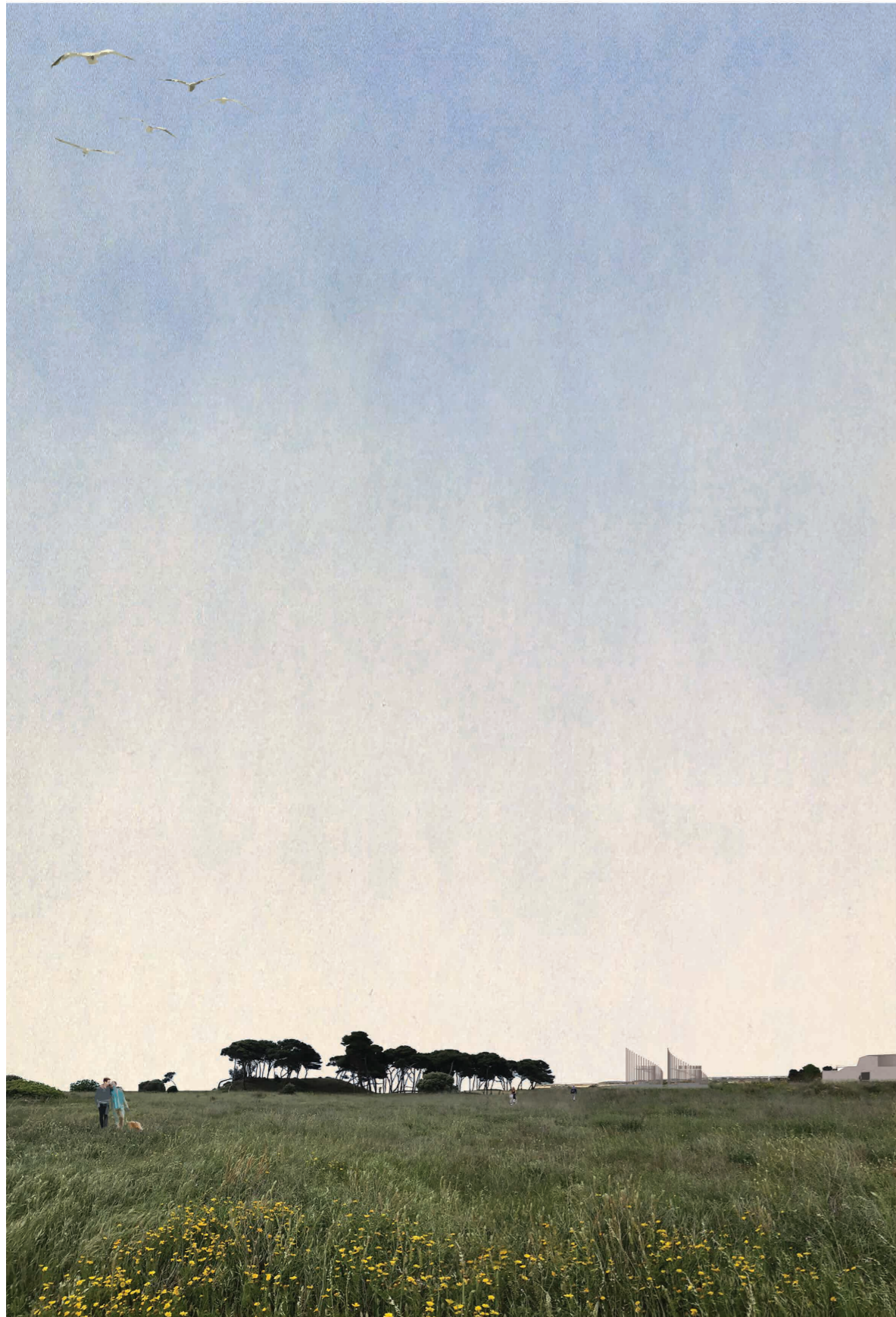


CLIMATE CHANGE AGAIN

11th International Biennial Landscape Barcelona

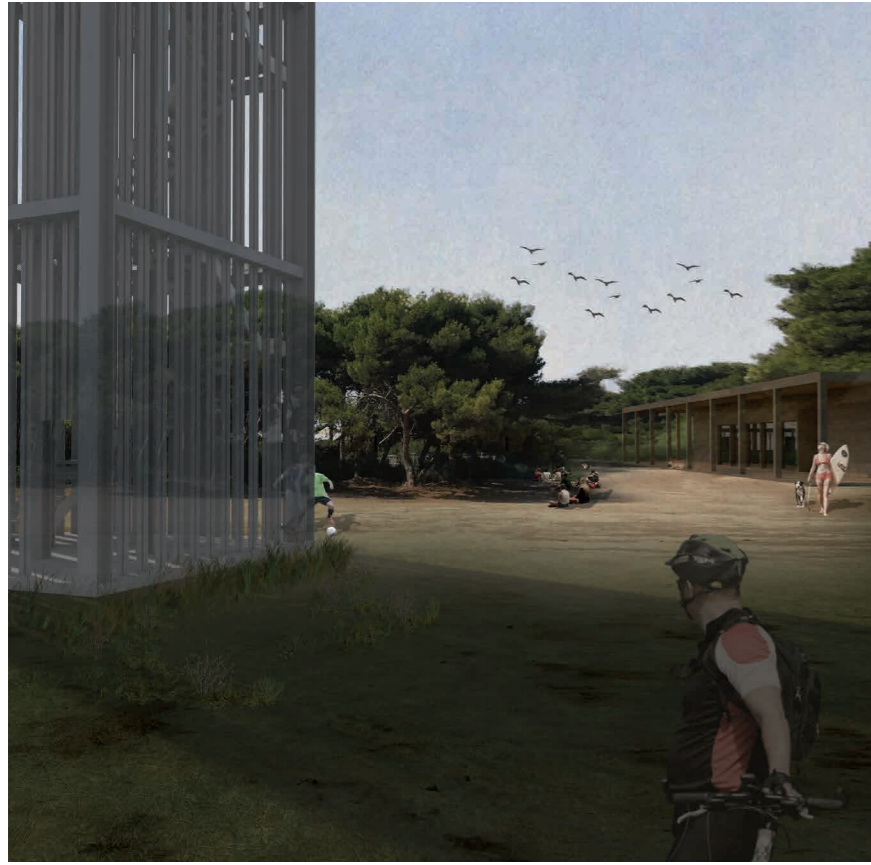
Barcelona September 2020
SCHOOL PRIZE





PROF. B. W. / PAVIMENTO MINIMALE (14)





PROFILO C-C | PARCO COSTIERO ISOLA DI SAN PIETRO (TA)

