



Country / City SPAIN

University / School UNIVERSITY OF VALLADOLID / SCHOOL OF ARCHITECTURE

Academic year 2019 / 2020

Title of the project THE RAILWAY LANDSCAPE IN VALLADOLID

Authors JUSTINE COURCOUX - SOLÈNE DONARD- BEATRIZ DE LAS RIVAS VILLARROYA - CLAUDIA SÁNCHEZ ESCUDERO

TECHNICAL DOSSIER

Title of the project THE RAILWAY LANDSCAPE IN VALLADOLID
Authors JUSTINE COURCOURX - SOLÈNE DONARD - BEATRIZ DE LAS RIVAS - CLAUDIA SÁNCHEZ
Title of the course ARCHITECTURAL COMPOSITION V: CONTEMPORARY GARDEN AND LANDSCAPE
Academic year 2019 / 2020
Teaching Staff DARÍO ÁLVAREZ (Coord.) - SAGRARIO F. RAGA - CARLOS RODRÍGUEZ - LAURA LÁZARO
Department/Section/Program of belonging
Theory of Architecture and Architectural Design / Architectural Composition / Degree in Architecture
University/School UNIVERSITY OF VALLADOLID / SCHOOL OF ARCHITECTURE



Written statement, short description of the project in English, no more than 250 words

The Garden In Between: Permanence and Movement, is a Project defined by its localization, an evicted industrial area (320.000 square meters) inside the city, dedicated to the train industry, mainly train repair and machinery making. The objective of the project is to rehabilitate the area, transforming it into a green space, creating a park oriented towards the future whilst looking back into the past. With these objectives in mind, we aim to achieve three goals:

- To face present and future challenges, like the increasingly older population, or the climate crisis, by restoring local ecosystems in the area and increasing its resilience.
- To connect the area with the rest of the city, divided by the railway.
- To preserve the memories of the park by conserving the warehouses of an industry which has had a huge impact in the city, warehouses that might present new job opportunities for the community.

The project is planned to develop in stages. Following this logic, we have divided the area into strips and fully developed the first strip for the first stage. We mainly use two strategies in the Garden In Between: to empty and reuse the old warehouses; and to 'green-up' the area, using indigenous flora, allowing its spontaneous growth, to help revive the biological life inside the city. It will be a garden in motion, not only through the planned steps, but by the action of nature itself over time.

For further information
Máster d'Arquitectura del Paisatge -DUOT - UPC

T: + 34 93 401 64 11 / +34 93 552 0842
Contact via email at: biennal.paisatge@upc.edu

Máster d'Arquitectura del Paisatge -DUOT - UPC
ETSAB- Escola Tècnica Superior
d'Arquitectura de Barcelona
Avenida Diagonal, 649 piso 5
08028 Barcelona-Spain



CLIMATE CHANGE AGAIN

11th International Biennial Landscape Barcelona

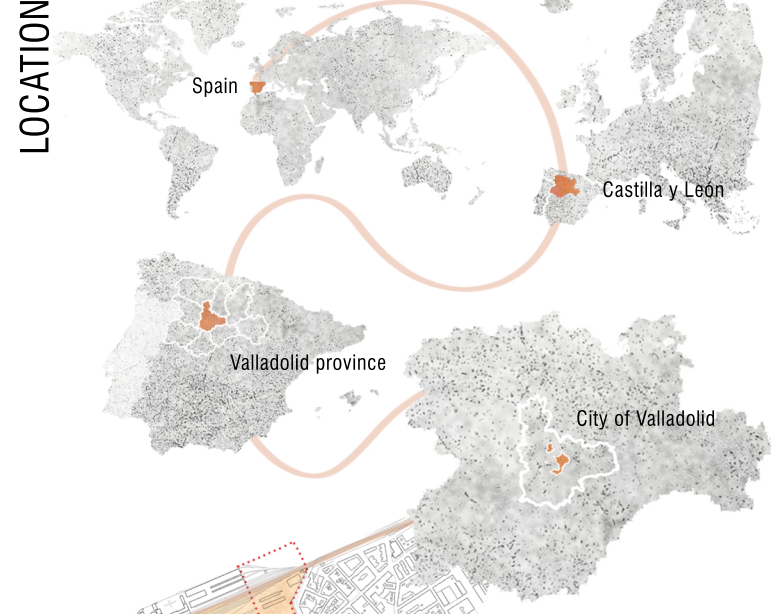
Barcelona September 2020
SCHOOL PRIZE

A GARDEN IN BETWEEN

Permanence and Movement

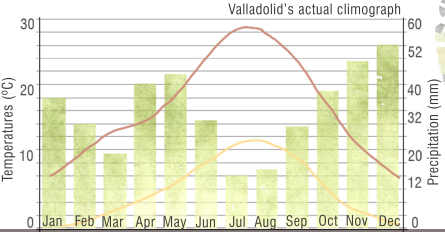


LOCATION

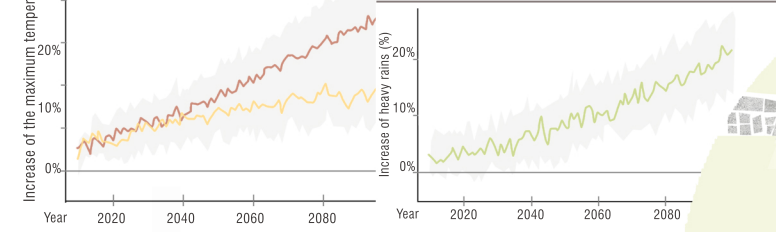


Proposed location: a recently abandoned industrial area inside the city of Valladolid. The garages (belonging to Spanish railway network) have been dedicated to machinery making and repair since 1960.

Valladolid is a city of cold winters and hot dry summers. Rainfalls are common during the beginning of winter and spring, but they rare during summers, where the city occasionally suffers from droughts. The significant difference between day and night temperatures is also typical from the area.



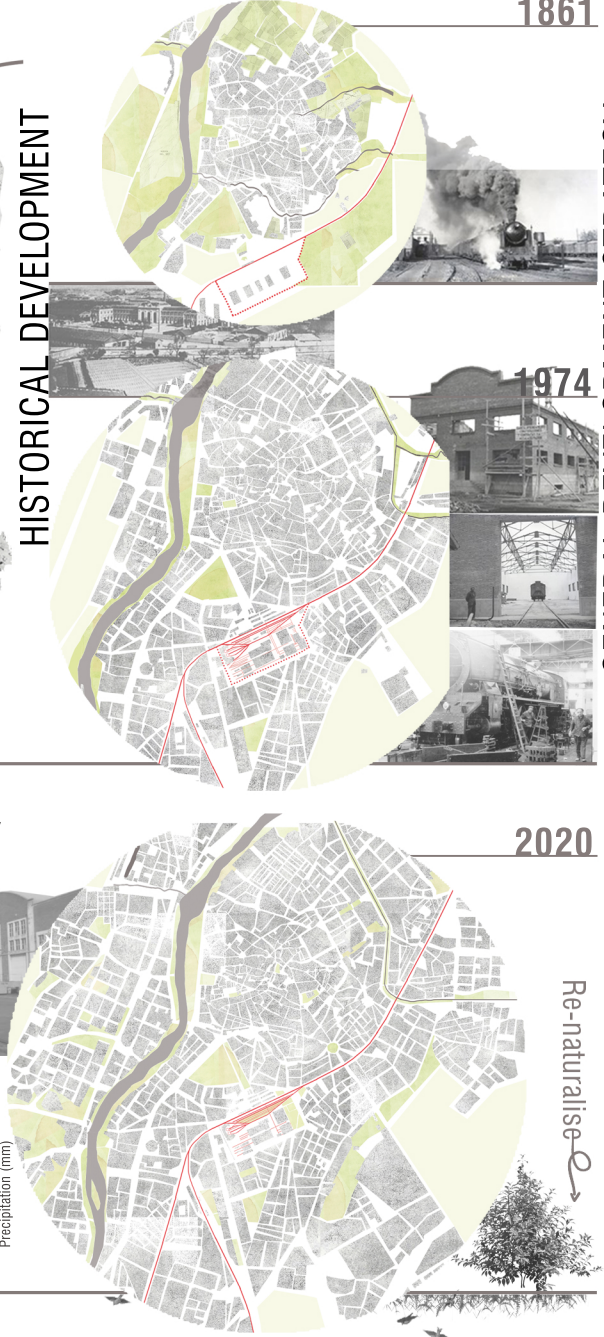
By 2050 the number of heavy rains will increase almost by 10%, and the maximum temperature will get higher too due to the climate crisis. Measures to minimise and to adapt the city to those risks should be taken.



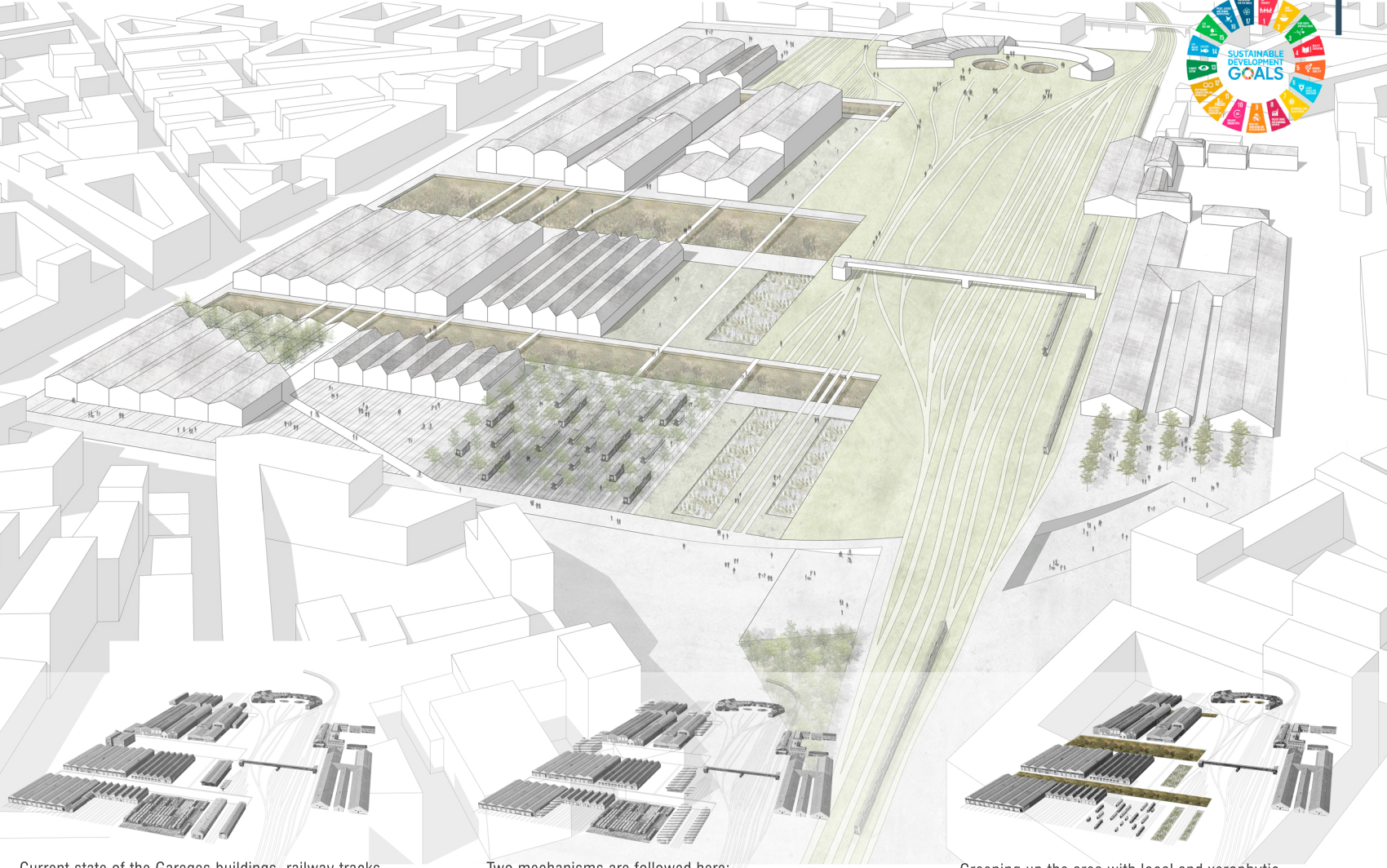
Spain is one of the countries with highest life expectancy, and with a low birth rate, the population pyramid may resemble in some years an inverted pyramid. This fact means that there is an ageing population, so the parks, the gardens, and the city as a whole, must be adapted and designed for elderly people too.



HISTORICAL DEVELOPMENT



GENERAL DEVELOPMENT STRATEGY

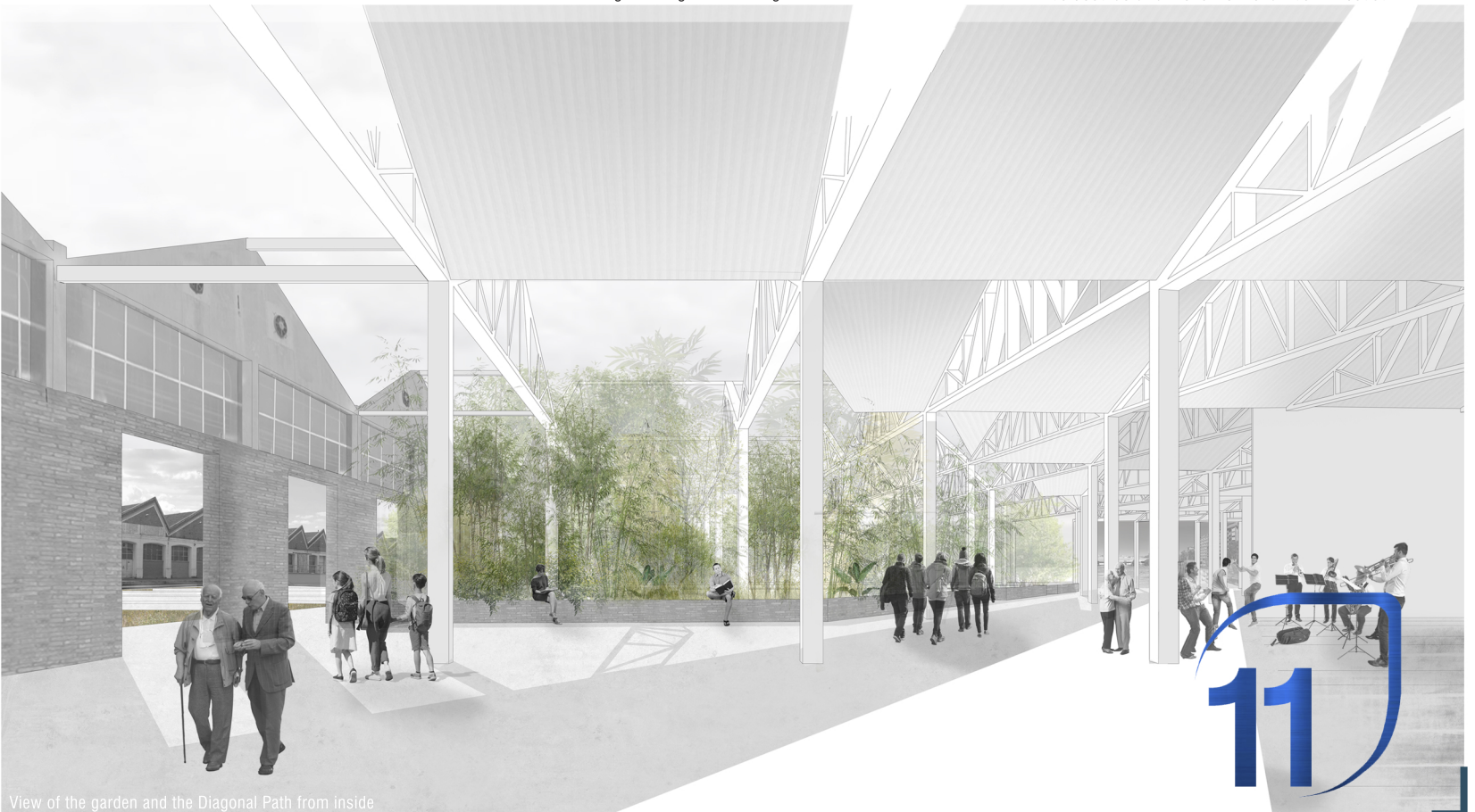


Current state of the Gareges buildings, railway tracks and train station (on the right).

- Keeping buildings, the best preserved and the ones of greater architectural value, transformig them into public multifunctional spaces.
- Removing buildings but leaving its tracks

Greening up the area with local and xerophytic vegetation. Creating green bands between the buildings occupying the train machinery platform, at a lower height so it can be used as a rain overflow chamber if needed.

Re-naturalise



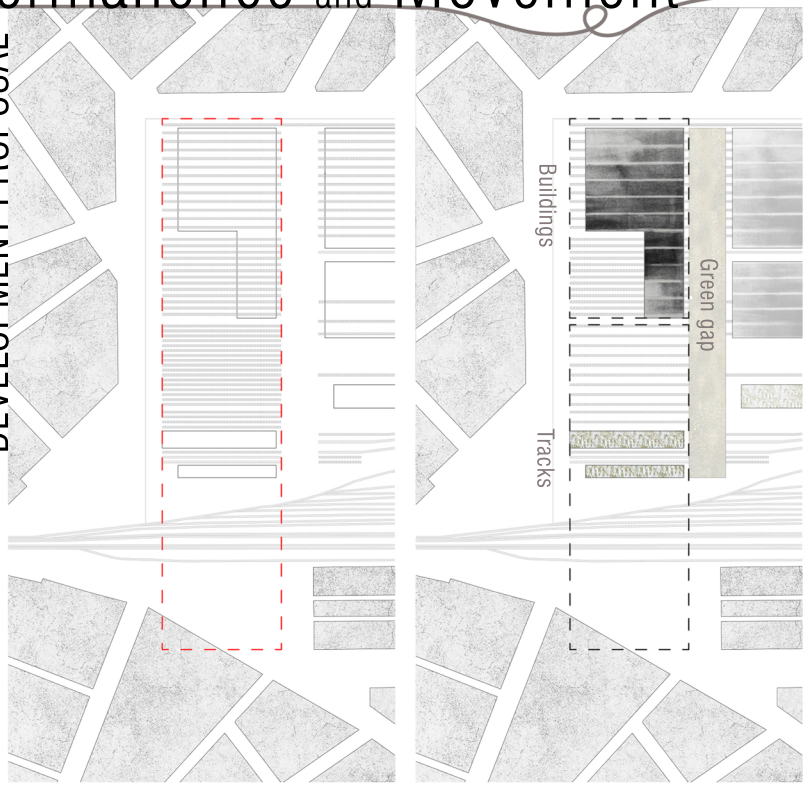
View of the garden and the Diagonal Path from inside

A GARDEN IN BETWEEN

Permanence and Movement

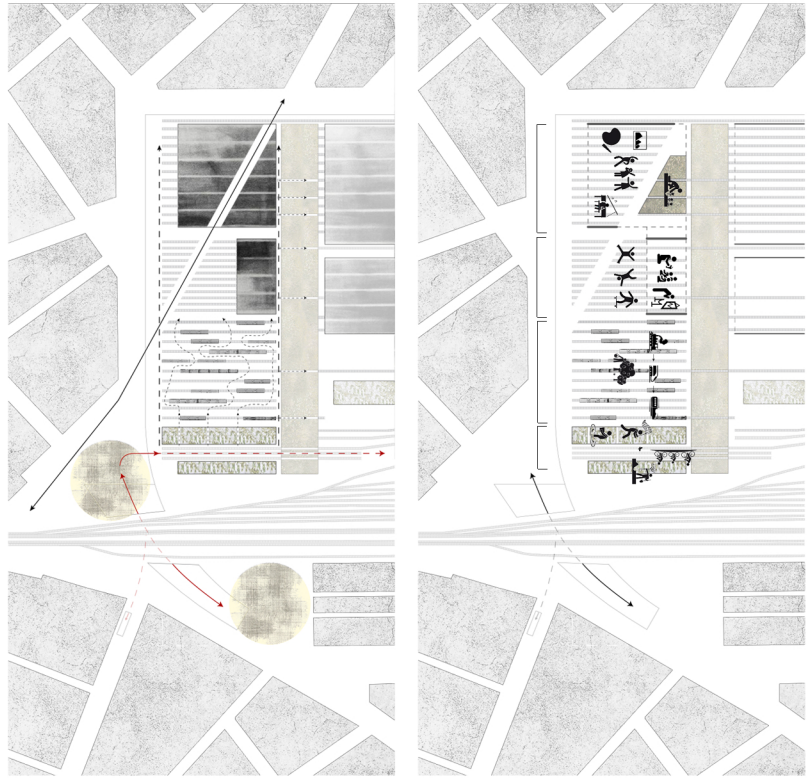


DEVELOPMENT PROPOSAL



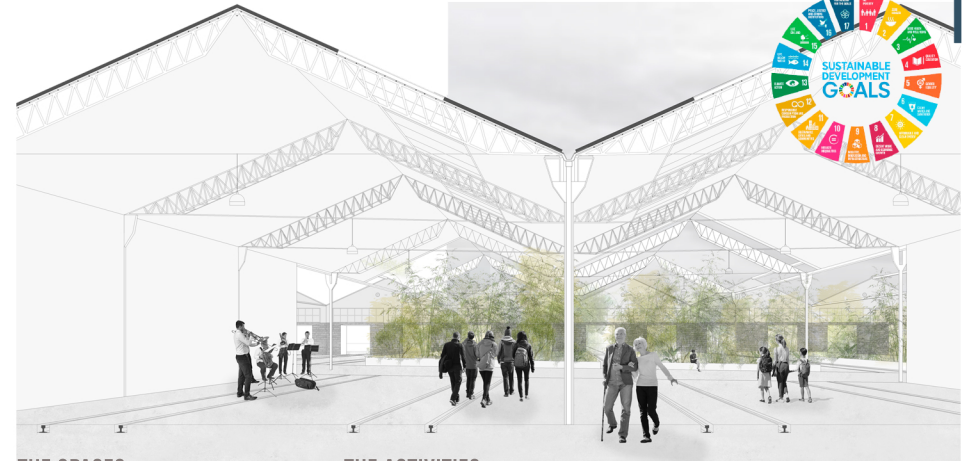
DEVELOPING ONE BAND
The northern sector is chosen as the first band to develop, allowing to establish a more detailed proposal due to its key role in the proposed connection of both sides of the city, and its greater contact with the houses in "Las Delicias" quartier.

BUILDINGS, TRACKS AND GAPS
- The buildings conserved, in black, provide new public multifunctional spaces for the neighbourhood.
- The surface traces of the removed buildings, are replaced by flowerbeds or water sheets.
- The gaps in between the bands are filled with vegetation of spontaneous growth.



PATHS
- Connecting the city by opening new pedestrian routes which follow its structure.
- Linking both sides of the city, east-west, thanks to an underground passage.
- The park provides East-West paths in the sides of the bands and gaps, whilst inside them the circulations are mainly North-South, guided by the rail lines.

NEW SPACES, NEW ACTIVITIES
The park will have open-air areas and built spaces without a permanent use, widening the range of activities for the community to choose.
The aim is to help people to build a more active life within its own community, using those quality spaces to build relationships for a better life.



THE SPACES
The main areas of the Garden in between are named here following the floor plan above.

THE ACTIVITIES
The space has been thought so everybody can find their place, no matter the age or condition, but it is always related with the place's history and the nature.

1. The Three Naves: a covered space, where the railway tracks guide the route.
2. The Diagonal Path
3. First Green Band
4. The Gardens
5. The Railway Museum
6. The Train Cemetery
7. The Water sheet
8. North Entrance, a railway path leads people for a walk throughout the park
9. The Flower bed
10. The Forest and the meadow
11. The Old Walls, a track from the earlier limit of the Garages



View of the Train Cemetery

A GARDEN IN BETWEEN

Permanence and Movement

"Gardening... demands a certain attitude, it is necessary to accept the dynamism of vegetation with serenity"

Giles Clément



ECOLOGICAL ASPECTS

CONSCIOUS GRADENING

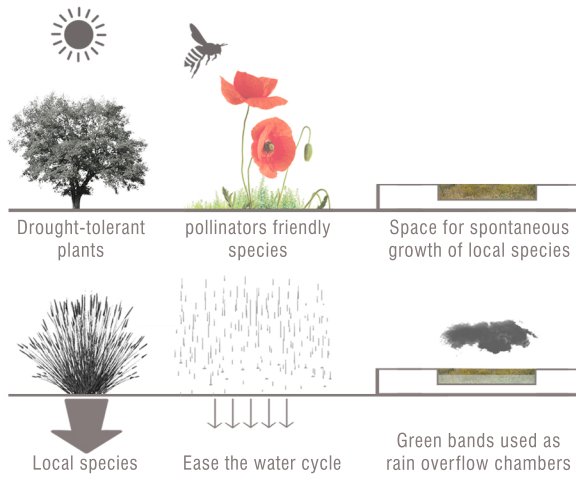
In order to choose the plants, two strategies are followed:

- To plant, species will be chosen in function of their need of water and care, the less watering needed the better.

- Unhindered growth, plants that will grow spontaneously, as they do in the countryside, in the *Green Bands* projected for it. This will boost

ECOSYSTEM RESTORATION

Bringing back local species of animals and plants will allow a restoration of the balance between species, which where at the area hundreds of years ago, improving biodiversity and its ecosystem services, so necessary for the survival of life.



WILD PLANTS

- Marsh-mallow (*Althaea officinalis*)
- Field marigold (*Calendula arvensis*)
- Cornish mallow (*Lavatera cretica*)
- Garden sage (*Salvia officinalis*)
- Common poppy (*Papaver Rhoeas*)
- Spanish broom (*Spartium junceum*)
- Common dandelion (*Taraxacum officinale*)
- Viper's bugloss (*Echium vulgare*)
- Wild carrot (*Daucus carota*)
- Common sunflower (*Helianthus annuus*)

XEROPHILE SHRUBS

- Strawberry tree (*Arbutus Unedo*)
- Judas-tree (*Cercis siliquastrum*)
- Common myrtle (*Myrtus Communis*)
- True lavender (*Lavandula angustifolia*)
- Rosemary (*Salvia rosmarinus*)

XEROPHILE GRASS

- White clover (*Trifolium repens*)
- Common thyme (*Thymus vulgaris*)
- Kidney weed (*Dichondra repens*)
- Lolium arundinaceum (*Festuca arundinacea*)
- Common ivy (*Hedera helix*)

LOCAL URBAN BIRDS

- Barn swallow (*Hirundo rustica*)
- Spotless starling (*Sturnus unicolor*)
- House sparrow (*Passer domesticus*)
- Common Swift (*Apus apus*)
- Common house martin (*Delichon urbicum*)

POLLINATORS

- European Bee (*Apis mellifera*)
- Bumblebee (*Bombus atratus*)
- king swallowtail (*Papilio thoas*)
- Passion butterfly (*Agraulis vanillae*)



View of the North entrance to the park