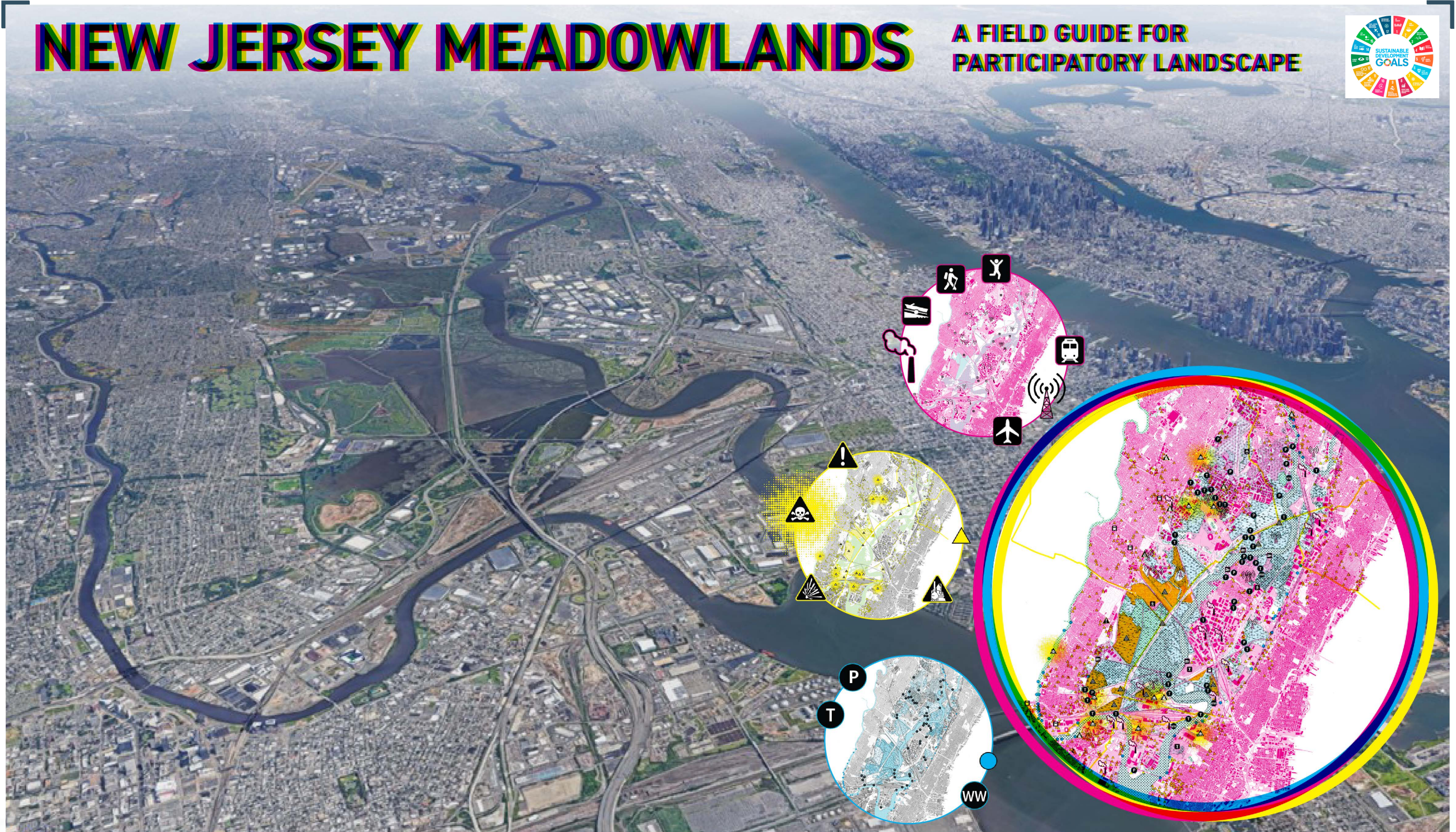


NEW JERSEY MEADOWLANDS

A FIELD GUIDE FOR
PARTICIPATORY LANDSCAPE



Country / City	USA / New York City
University / School	Bernard and Anne Spitzer School of Architecture, City College of New York
Academic year	2019 - 2020
Title of the project	New Jersey Meadowlands: A Field Guide for Participatory Landscape
Authors	Anna McKeigue

TECHNICAL DOSSIER

Title of the project	New Jersey Meadowlands: A Field Guide for Participatory Landscape
Authors	Anna McKeigue
Title of the course	Studio VI
Academic year	2019-2020
Teaching Staff	Catherine Seavitt Nordenson
Department/Section/Program of belonging	Graduate Landscape Architecture Program
University/School	City College of New York



Written statement, short description of the project in English, no more than 250 words

In confronting the climate crisis, how can we develop alternative approaches to civic engagement that promote a more complex idea of ecology and advocate for social and environmental equity and inclusion? The New Jersey Meadowlands poses a complex scenario of overlapping, critical ecological and infrastructural systems – and murky, messy cultural histories. This project investigates how we can understand the Meadowlands given current ecological thinking and acknowledging the Meadowlands as a living assemblage of complex relationships. As landscape architects, it is important for us to acknowledge that we construct understandings of landscapes, not just physical interventions. For the New Jersey Meadowlands I propose an open field guide as a mechanism to enable communities to engage in understanding the dynamic and interrelated systems of our everyday ecologies. This open field guide is unlike the traditional “Nature” field guides in which things of the “natural world” are presented as objectively legible for humans to “know” knowable objects. Instead, the idea of an open field guide provides a framework for seeing the New Jersey Meadowlands and is a way of codifying the process of understanding. I envision this open field guide to be a multi-authored, hyper-indexed platform to empower diverse voices to be engaged in shared landscape stewardship. It aims to be a scaffold upon which there can be a collaborative effort and engagement in telling the many stories of a place.

For further information
Máster d’Arquitectura del Paisatge -DUOT - UPC

T: + 34 93 401 64 11 / +34 93 552 0842
Contact via email at: biennal.paisatge@upc.edu

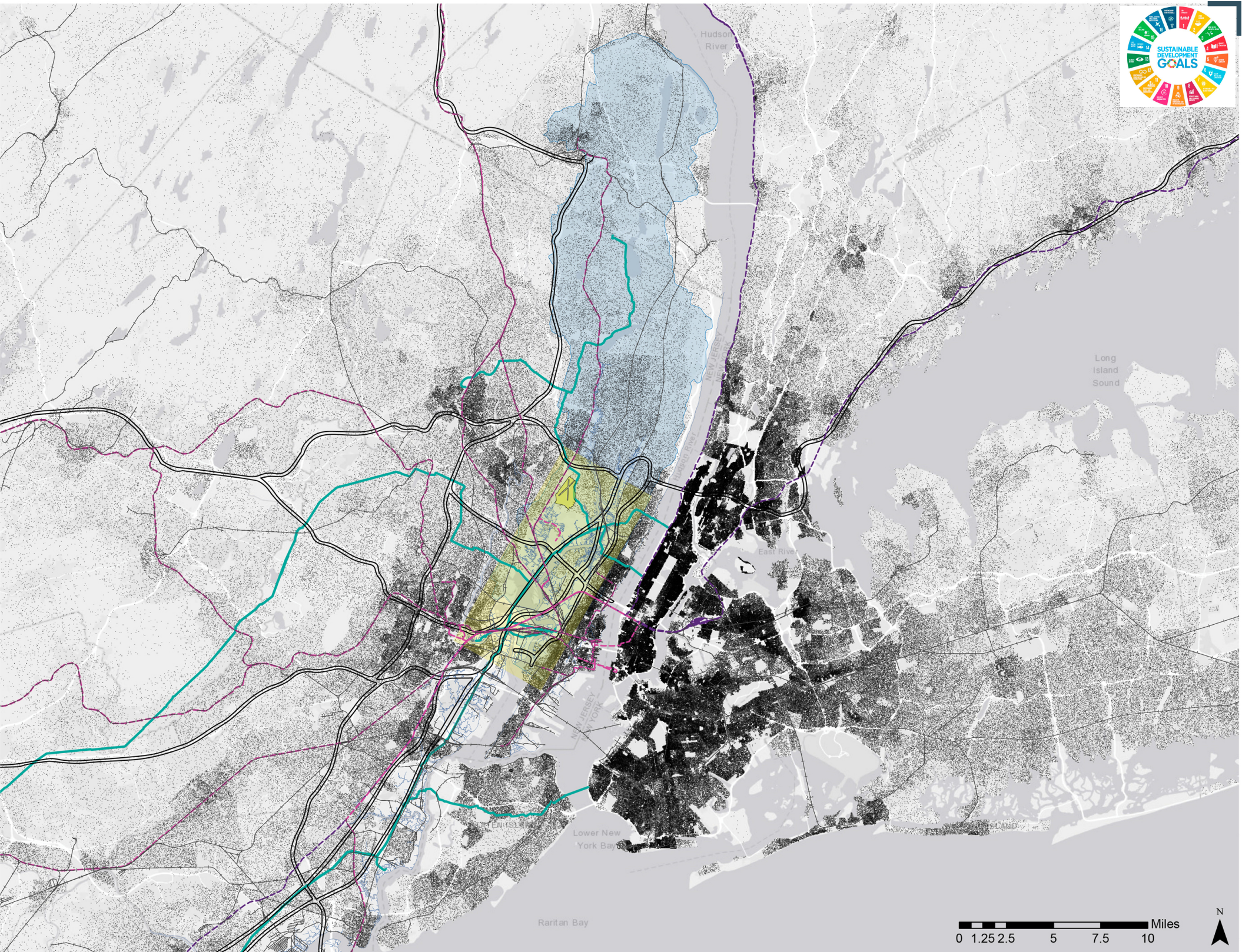
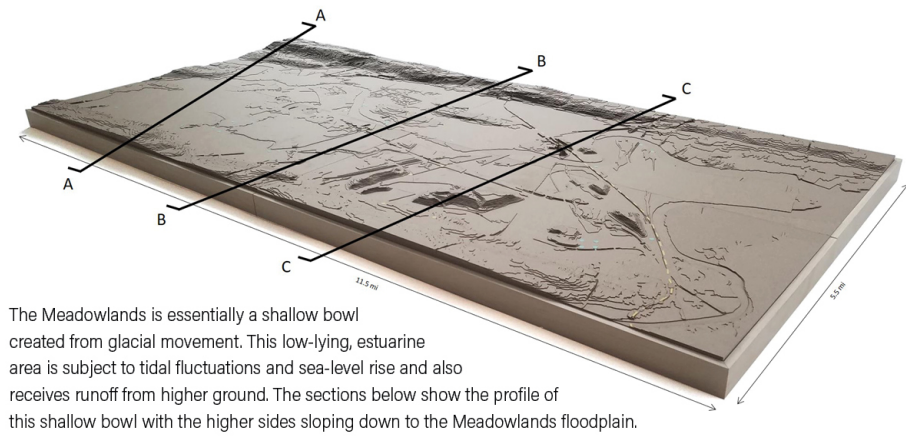
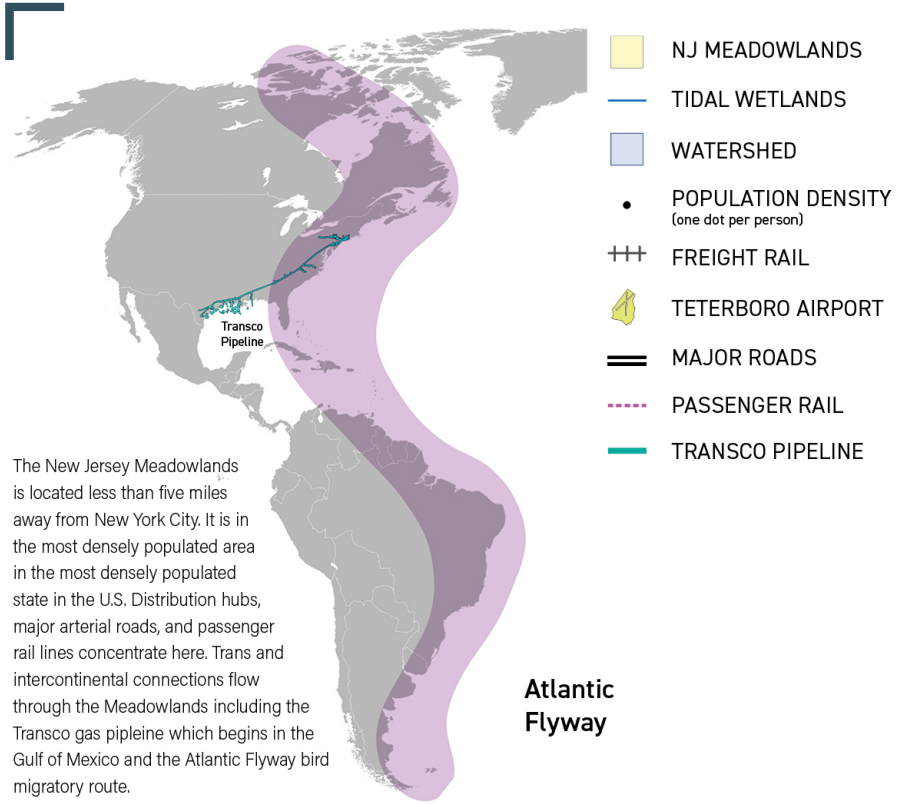
Máster d’Arquitectura del Paisatge -DUOT - UPC
ETSAB- Escola Tècnica Superior
d’Arquitectura de Barcelona
Avenida Diagonal, 649 piso 5
08028 Barcelona-Spain



CLIMATE CHANGE AGAIN

11th International Biennial Landscape Barcelona

Barcelona September 2020
SCHOOL PRIZE



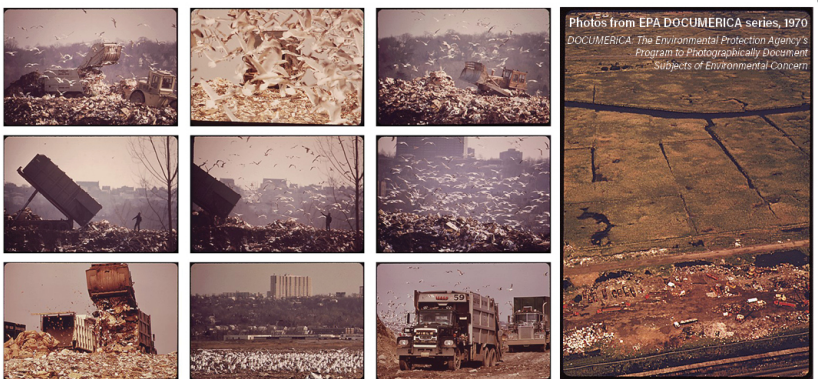
History of Intervention



"Wasteland" to "Productive" Use



"Wasteland" to Dumping Ground



Speculative Schemes for Development



ACCESS

How does one access the Meadowlands beyond designated recreational areas? Exploring so called "dead end" roads.



NOVEL ECOLOGIES

Fields and fields of *Phragmites australis*, common reed, which thrives in highly disturbed conditions.



PORTALS

Views can be like portals into another world. In this large panoramic landscape, a slight change in perspective can seemingly evaporate barriers.



TOXIC LEGACIES

This place is tied together by toxic legacies and is an explosive landscape with the Transco pipeline, gas storage tanks, and landfills producing methane.



VESTIGES

Remnants of Atlantic White Cedar swamp stumps remain at Mill Creek Marsh and can only be found at low tide.



FIELD EXPLORATIONS

The NJ Meadowlands is often experienced as a place that people move through on their way to somewhere else. Through field explorations I investigated public access to the Meadowlands and probed the threshold at the Meadowlands District boundary.

--- MEADOWLANDS DISTRICT BOUNDARY

— LOCAL ROADS

— MAJOR ARTERIAL ROADS

NAVIGABLE WATER

PARKS



TRAILS



RECREATION



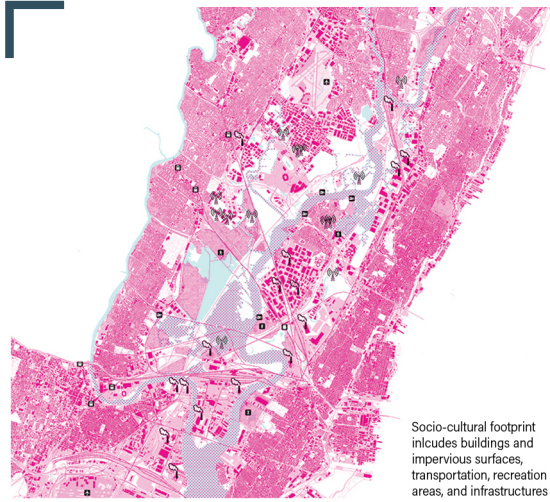
BOAT LAUNCH



TRAIN STATIONS

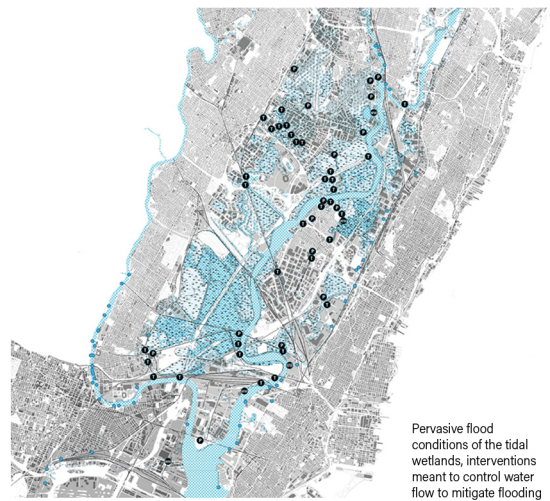


Esri, HERE, Garmin, (c) OpenStre



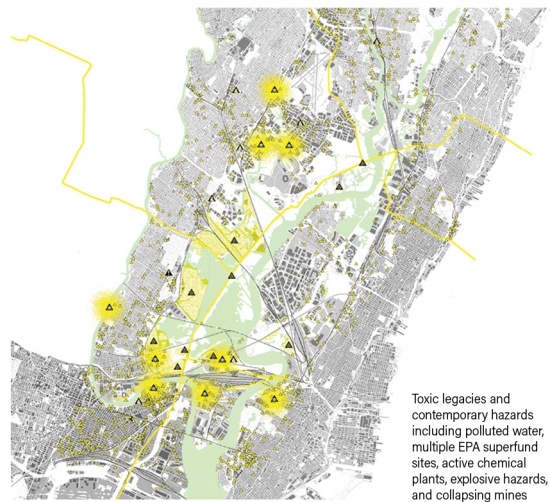
Socio-cultural footprint includes buildings and impervious surfaces, transportation, recreation areas, and infrastructures

SOCIO-CULTURAL



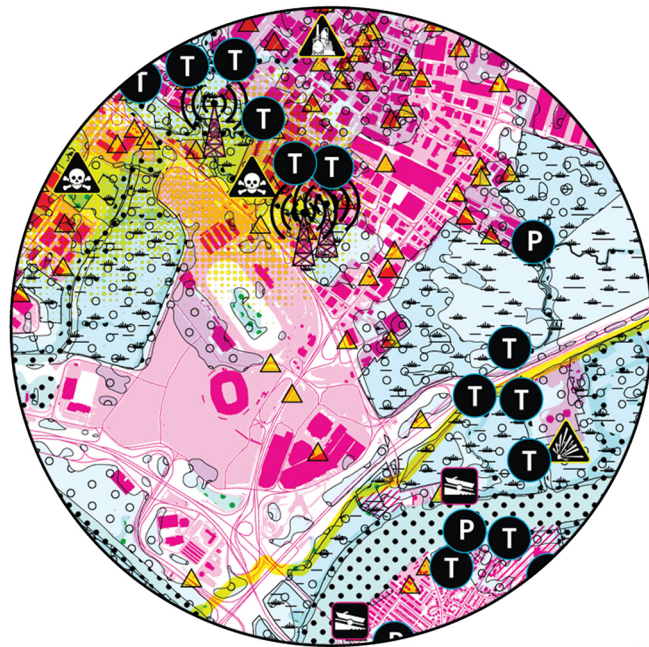
Pervasive flood conditions of the tidal wetlands, interventions meant to control water flow to mitigate flooding

PERVASIVE FLOOD



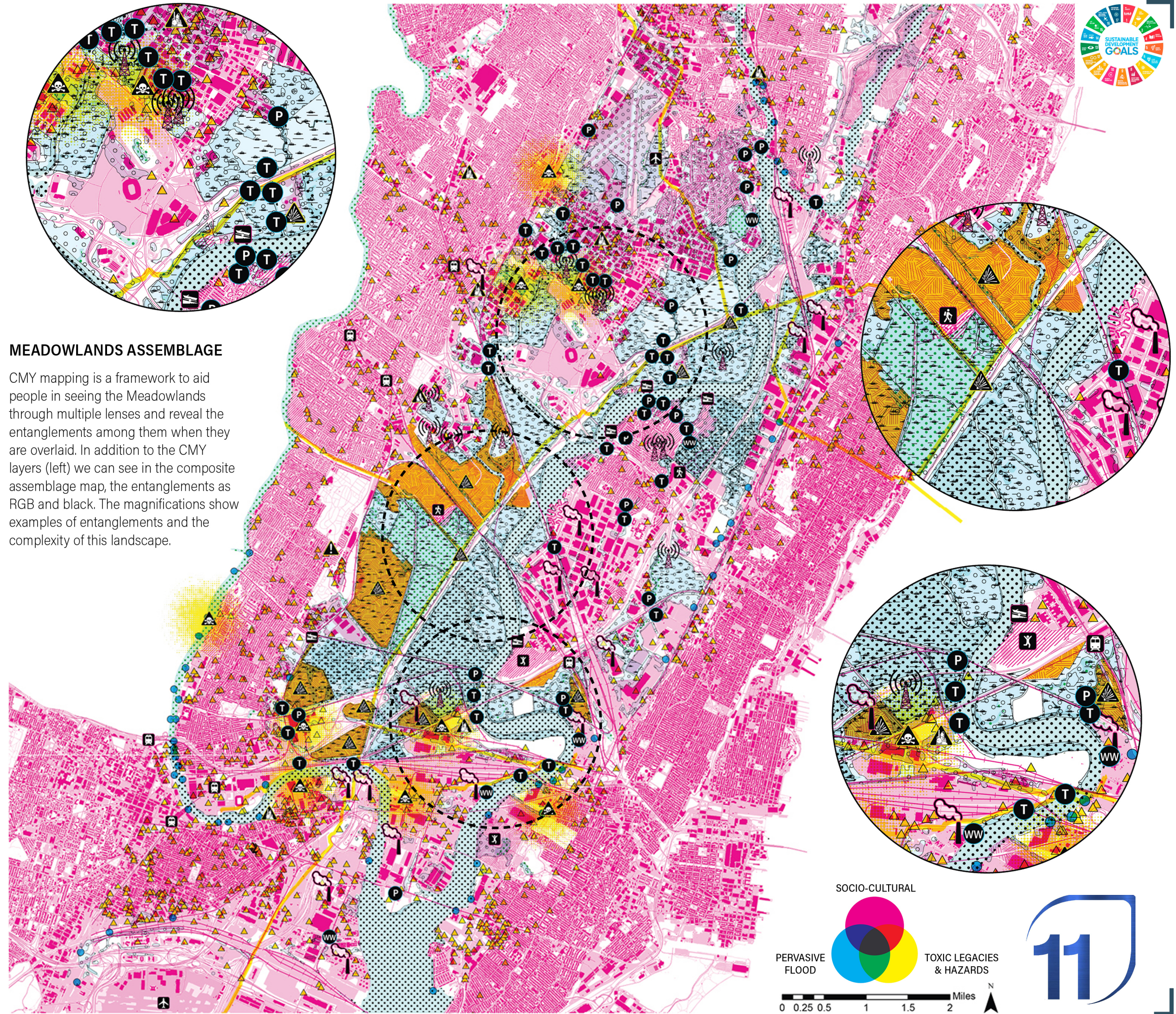
Toxic legacies and contemporary hazards including polluted water, multiple EPA superfund sites, active chemical plants, explosive hazards, and collapsing mines

TOXIC LEGACIES & HAZARDS



MEADOWLANDS ASSEMBLAGE

CMY mapping is a framework to aid people in seeing the Meadowlands through multiple lenses and reveal the entanglements among them when they are overlaid. In addition to the CMY layers (left) we can see in the composite assemblage map, the entanglements as RGB and black. The magnifications show examples of entanglements and the complexity of this landscape.



SOCIO-CULTURAL



PERVASIVE FLOOD

TOXIC LEGACIES & HAZARDS

