



Country / City

Greece / Thessaloniki

University / School

Aristotle University of Thessaloniki / School of Architecture

Academic year

2018 - 2019

Title of the project

Children are discovering nature : A path and a center of environmental awareness in Seih Sou.

Authors

Andreadou Maria, Beltsou Panagoula





## TECHNICAL DOSSIER

Title of the project Children are discovering nature : A path and a center of environmental awareness in Seih Sou  
Authors Andreadou Maria, Beltsou Panagoula  
Title of the course Diploma design thesis  
Academic year 2018 - 2019  
Teaching Staff Stiliani Lefaki  
Department/Section/Program of belonging   
University/School Aristotle University of Thessaloniki / Faculty of Engineering / School of Architecture



Written statement, short description of the project in English, no more than 250 words

The aim of this diploma thesis is to bring children, who live in cities, closer to nature, and raise awareness of the problems and the protection of the environment. The young explorers, walk on an 'imaginary' path, in the suburban forest of Thessaloniki, which ends up in an alternative shelter, where children follow collective and ecological lifestyle. Once we walked in Seih Sou, we chose a path that fulfilled the criteria of suitable distance and time factors, hiking difficulty for children, proper views, interesting site points, inspiring natural elements, special senses. Apart from the starting and end point, we created four more stops-points. Each stop remarks an environmental issue, adjusts to the existing landscape features (existing equipment, nature, use, materials), while at the same time, serves the operational needs of each point. The educative path ends up at the center of environmental awareness (CEA). The basic design principle is the creation of semi-open spaces and shape-shifting constructions, in order the child to familiarize with the space and organize it freely. Towards a sustainable design, we aim to maintain and highlight the natural elements, and reuse the building reserve. The sixteen, small houses, are formed in neighborhoods with different uses (workshops of natural and recyclable materials, performing arts, food processing and two residential neighborhoods), while the main building accommodates mainly collective spaces. Our intention is to create a total experience, that raises social and ecological concerns for younger guests, and opens new perspectives of living, in a collective and friendly to the environment way.

For further information  
Máster d'Arquitectura del Paisatge -DUOT - UPC

T: + 34 93 401 64 11 / +34 93 552 0842  
Contact via email at: [biennal.paisatge@upc.edu](mailto:biennal.paisatge@upc.edu)

Máster d'Arquitectura del Paisatge -DUOT - UPC  
ETSAB- Escola Tècnica Superior  
d'Arquitectura de Barcelona  
Avenida Diagonal, 649 piso 5  
08028 Barcelona-Spain

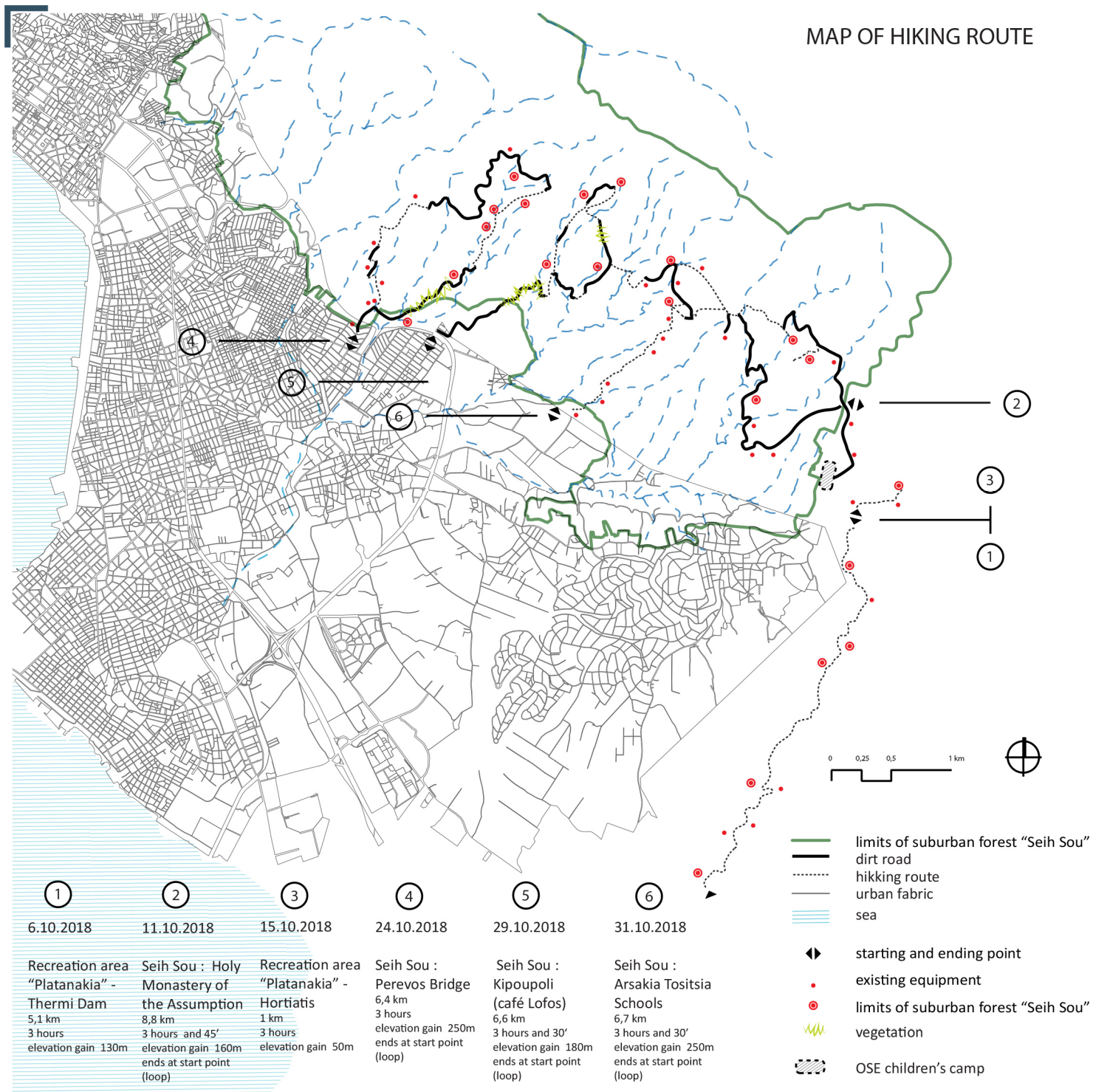


# CLIMATE CHANGE AGAIN

11th International Biennial Landscape Barcelona

Barcelona September 2020  
SCHOOL PRIZE





Hiking route 6\_Seih Sou : Arsakia Tositsia Schools



vegetation points of interest equipment hiking route

Hiking route 2\_Seih Sou : Holy Monastery of the Assumption



vegetation points of interest equipment hiking route

### CONCEPTUAL DIAGRAM

#### ENVIRONMENTAL PROBLEMS

- garbage in nature
- garbage
- lack of green in the city
- fire
- noise pollution
- water shortage
- logging
- intense city rhythms devalue the importance of nature

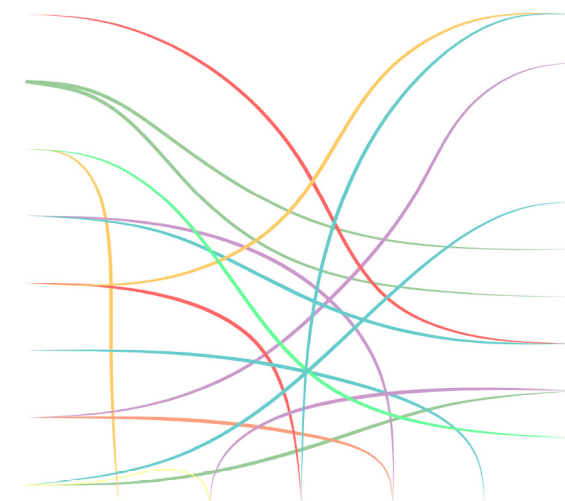
#### STARTING POINT

GREAT BOATS OBSERVATORY GLADE DAM LOCUST TORY

#### FAVORABLE SOLUTIONS

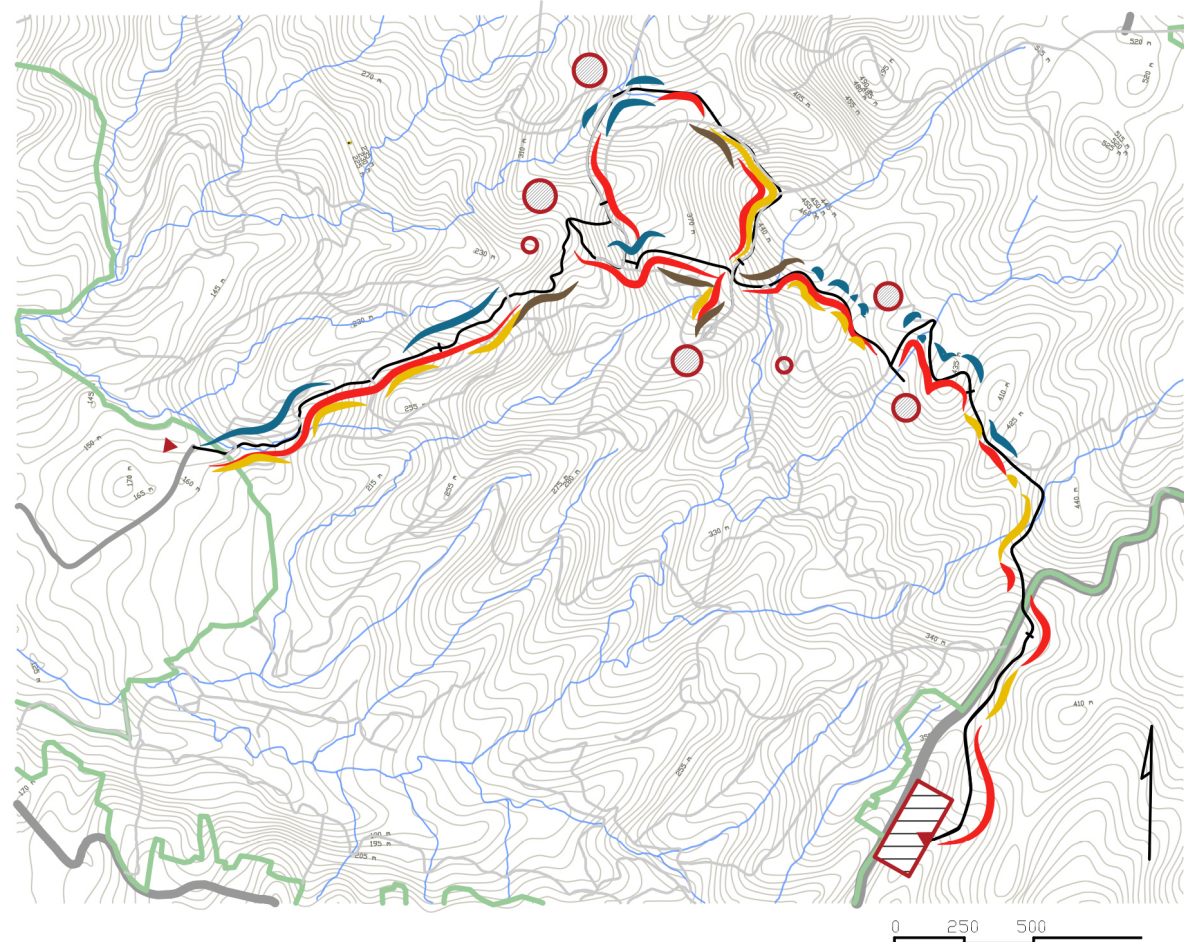
- sound site
- reforestation
- composting, minor crops
- honey
- structures with natural materials
- recycling garbage collection and transportation
- recycling\_reuse
- behavior / survival in the unknown
- contemplation / enjoyment moments of isolation
- growing plants
- manufacture from natural materials (soaps, mud)

#### TERMINATION POINT



CENTER OF ENVIRONMENTAL AWARENESS

### MAP OF THE PROPOSED ROUTE



- starting point / ending point
- proposed route
- dirt road
- distance in km
- points of interest
- suggested points of intervention
- limits of suburban forest "Seih Sou"
- contour lines
- stream
- road network
- OSE children's camp

starting point : Arsakia Tositsia Schools

ending point : OSE camp

distance : 5.6 km

duration : 3 - 4 hours

#### ROUTE QUALITIES

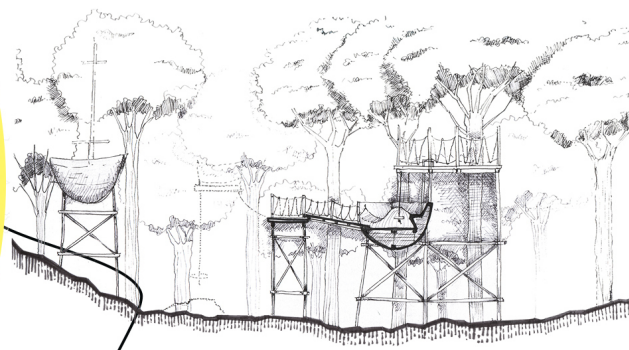
- soil
- gravel
- stone
- shadow



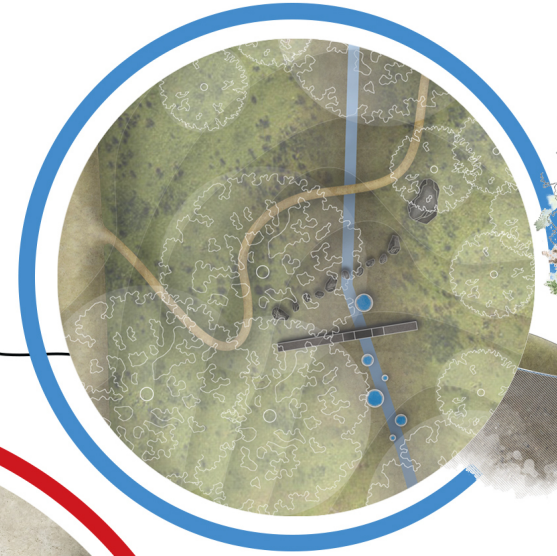




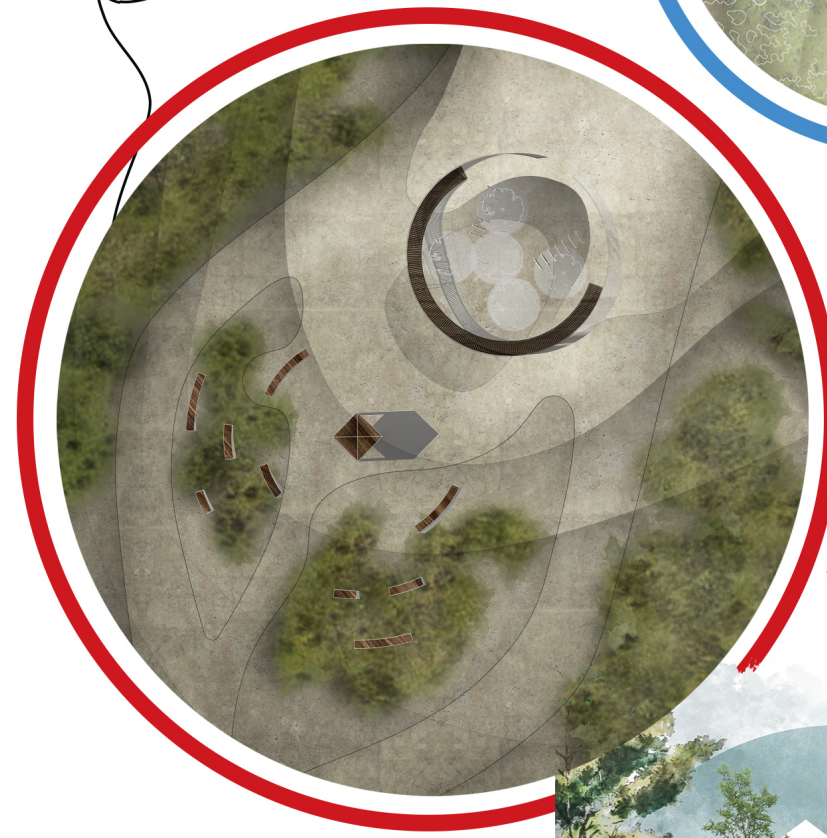
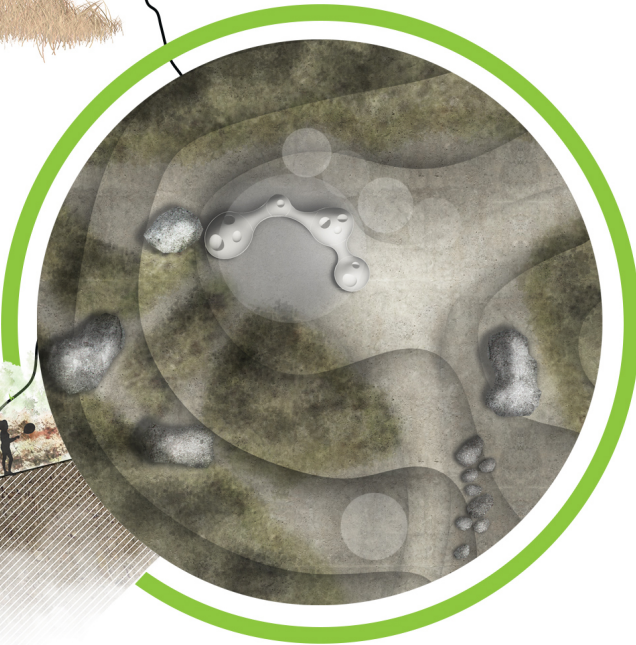
3. BOATS



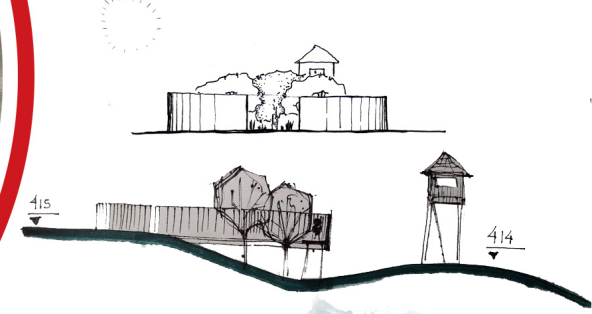
5. GLADES



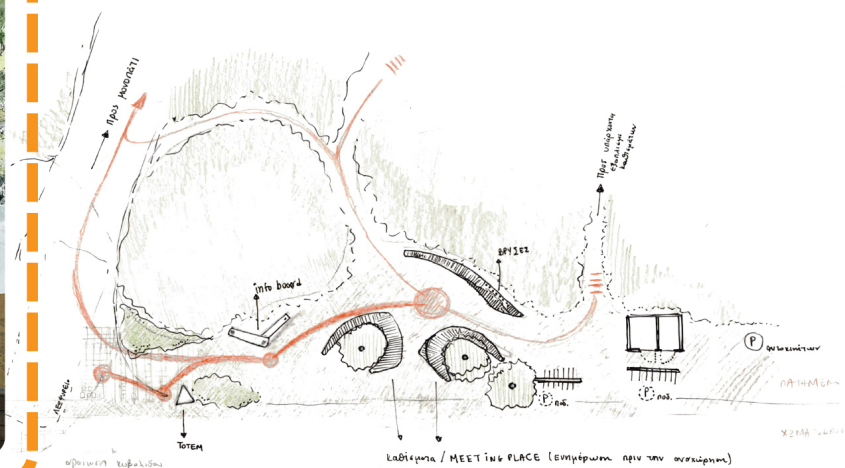
2. GREAT LOCUST



4. OBSERVATORY



1. STARTING POINT

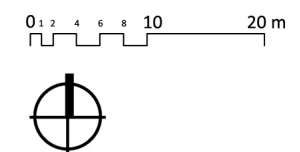


6. TERMINAL STATION  
CENTER OF ENVIRONMENTAL  
AWARENESS



TOP VIEW PLANS \_SCALE  
(IN CIRCLES)

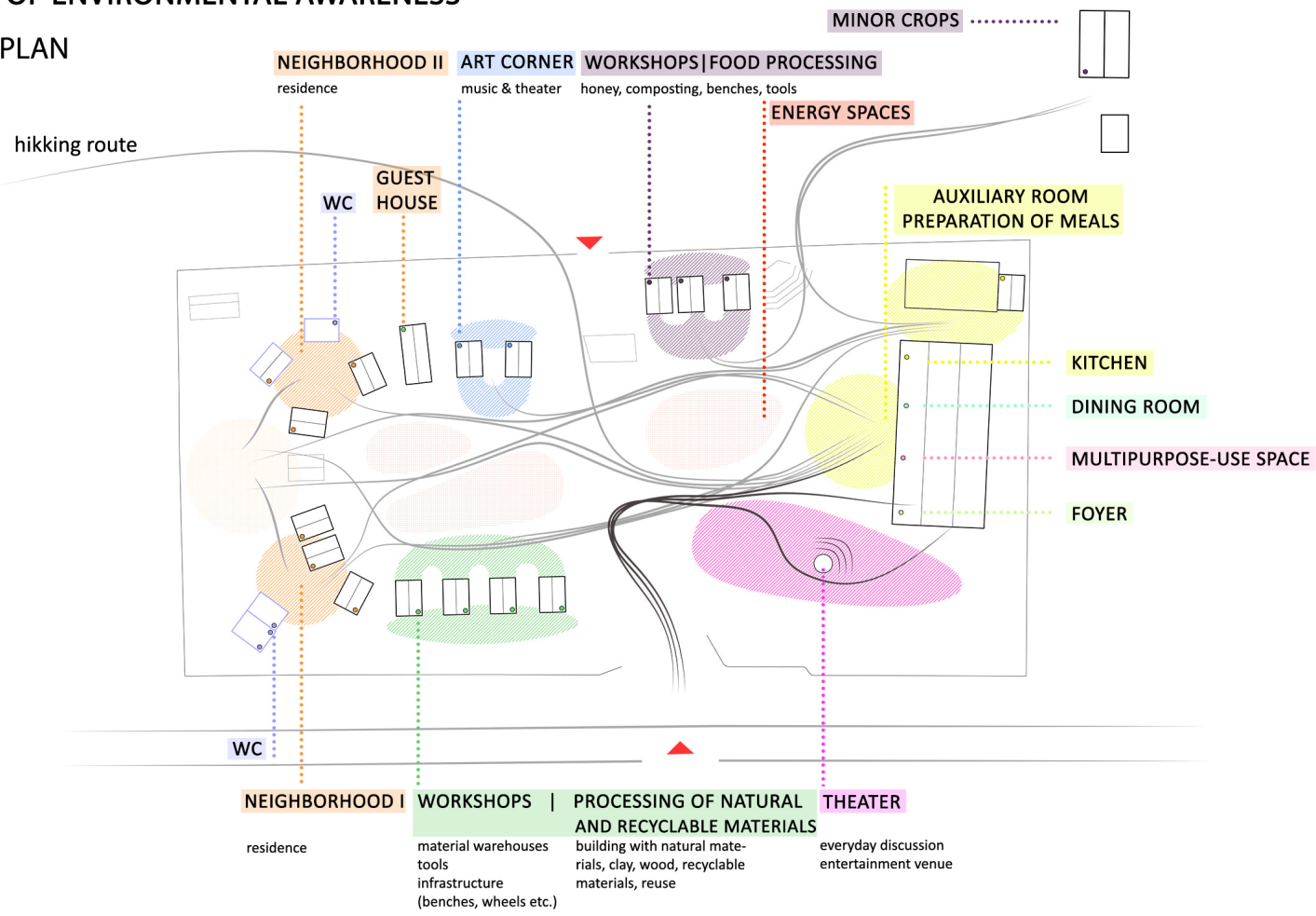
\_NORTH SIGN



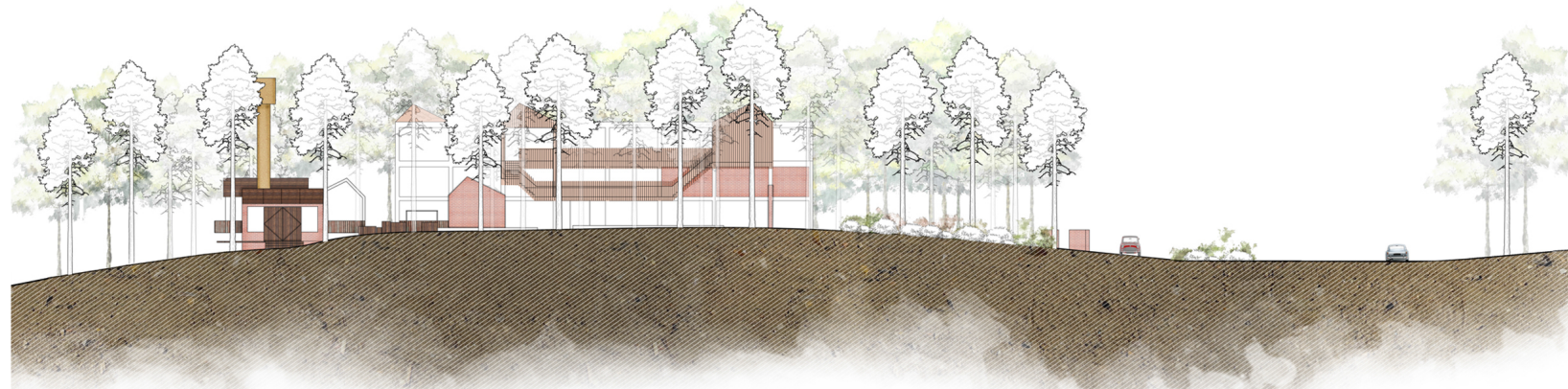
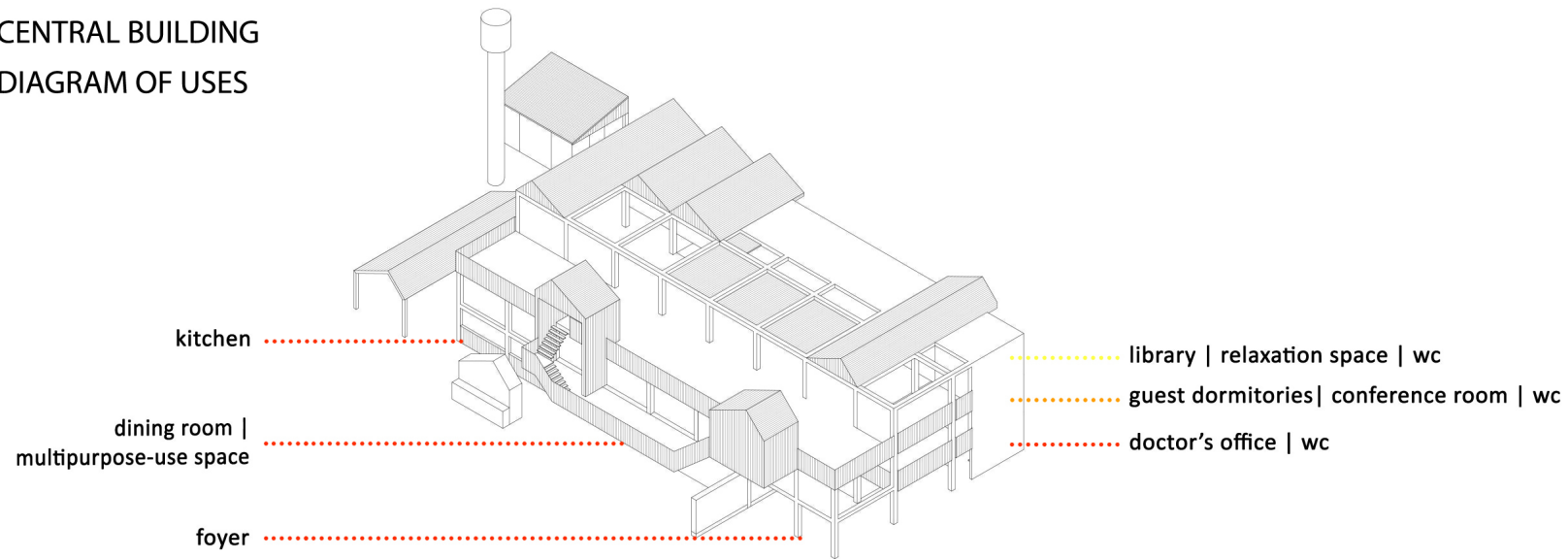


# CENTER OF ENVIRONMENTAL AWARENESS

## MASTERPLAN



## CENTRAL BUILDING DIAGRAM OF USES

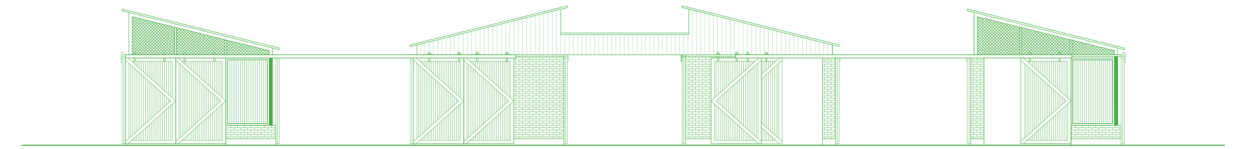


FRONT VIEW

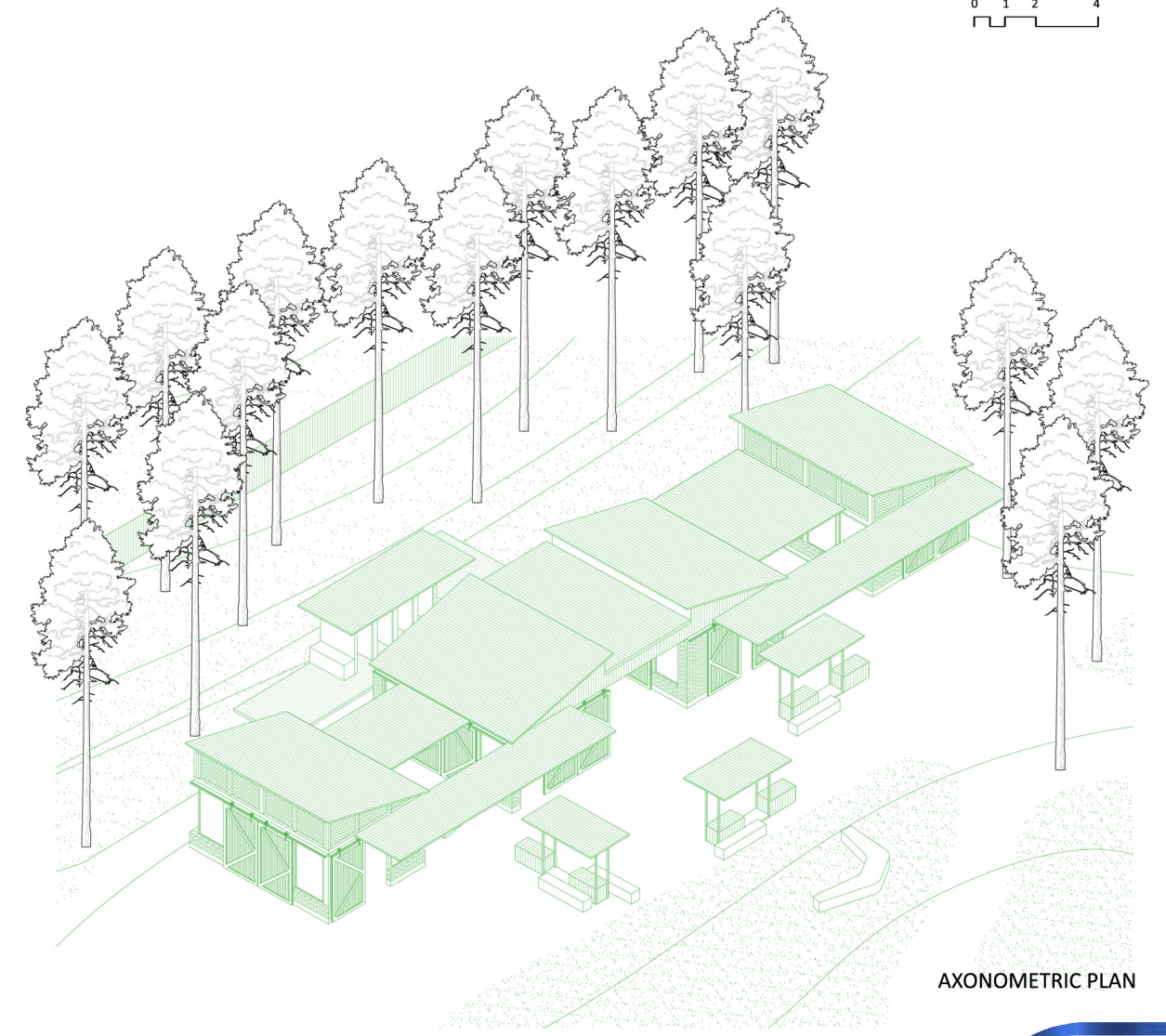
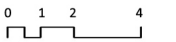
## WORKSHOPS OF NATURAL AND RECYCLABLE MATERIALS



PLAN



FRONT VIEW



AXONOMETRIC PLAN

