

Country / City

Calgary /Canada

University / School

University of Calgary / School of Architecture, Planning and Landscape

Academic year

2018-2019

Title of the project

Transitioning . Ramsay's Motional Landscape

Authors

Arezoo Khalili Kolahian



TECHNICAL DOSSIER

Title of the project	Transitioning . Ramsay's Motional Landscape
Authors	Arezo Khalili Kolahian
Title of the course	Landscape Architecture Studio II
Academic year	2018-2019
Teaching Staff	Enrica Dall'Ara
Department/Section/Program of belonging	Master in Landscape Architecture
University/School	University of Calgary / School of Architecture, Planning and Landscape



Written statement, short description of the project in English, no more than 250 words

Inglewood and Ramsay are the most historic communities in Calgary located in the center of the city across two major rivers of Calgary, Bow River and Elbow River. Inglewood was established in 1875 after Fort Calgary (national historic site of Canada) was built. After the arrival of Canadian Pacific Railway (CPR) in 1883, the city and these communities changed significantly. However, the presence of CPR caused significant fragmentation of green spaces and the separation of Inglewood and Ramsay.

Today, the City of Calgary is implementing a new Light Rail Transit Line (LRT), the Green Line, which connects north central and southeastern Calgary and in the Inglewood/Ramsay section runs next to the historic CPR. The goal of the project is to mitigate the community and landscape fragmentation by proposing a green corridor along the Green Line and create a memorable image for users and travelers. The proposed corridor is approximately 1 KM long, and links Fort Calgary to a Green Line station along the historic CPR. The goal is to create a memorable image reminding the travelers on LRT Calgary as a prairie city. The planting strategy is based on the fact it takes 20-30 seconds for short memory to store an image and Light Rail Transit travels at the average speed of 50km/h. The corridor along the LRT is divided into 6 plant communities with native plants in varieties of colors, textures, and heights. The colours at plants communities' edges blends together and generate a motional landscape in Ramsay.

For further information
Máster d'Arquitectura del Paisatge -DUOT - UPC

T: + 34 93 401 64 11 / +34 93 552 0842
Contact via email at: biennal.paisatge@upc.edu

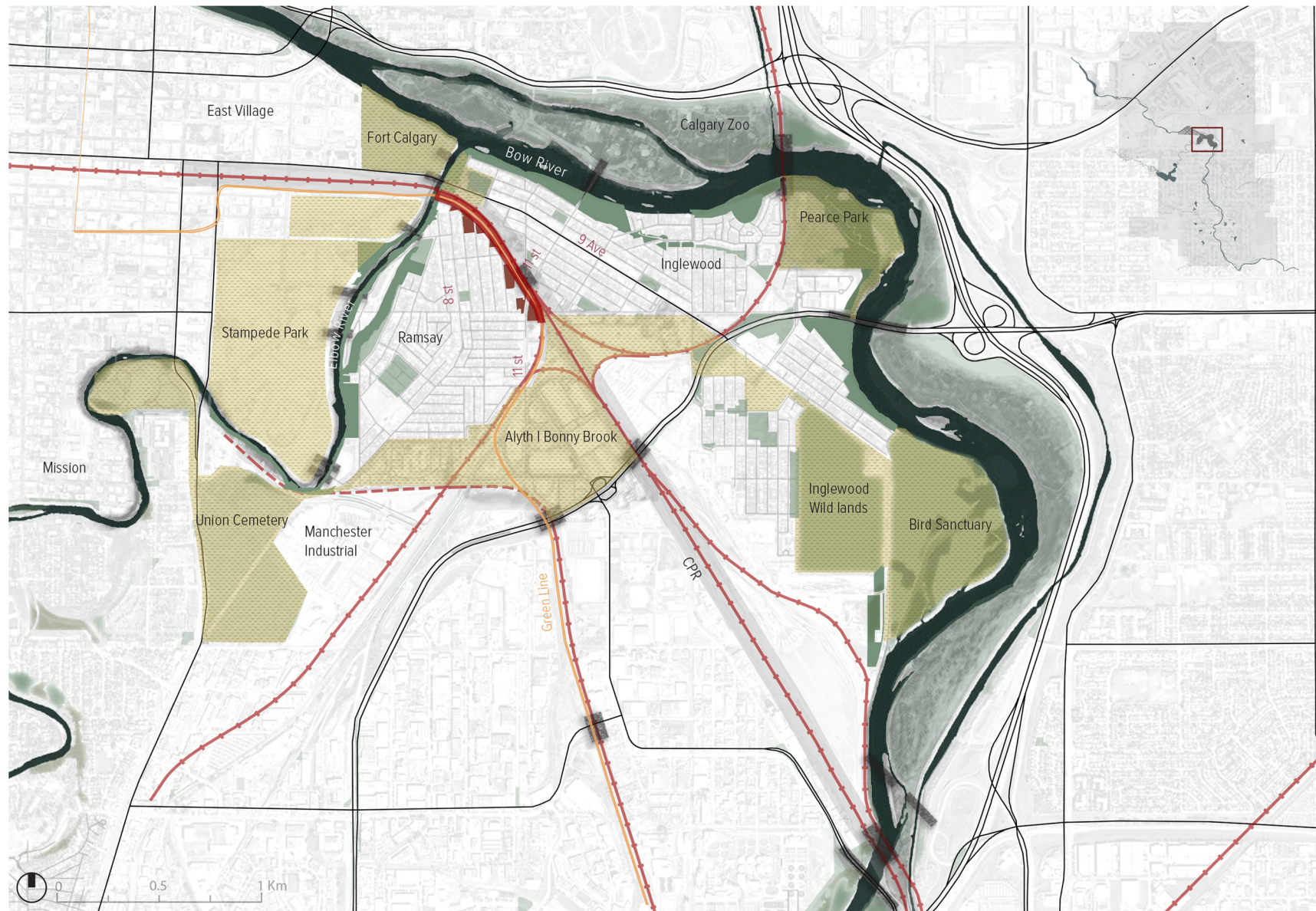
Máster d'Arquitectura del Paisatge -DUOT - UPC
ETSAB- Escola Tècnica Superior
d'Arquitectura de Barcelona
Avenida Diagonal, 649 piso 5
08028 Barcelona-Spain



CLIMATE CHANGE AGAIN

11th International Biennial Landscape Barcelona

Barcelona September 2020
SCHOOL PRIZE



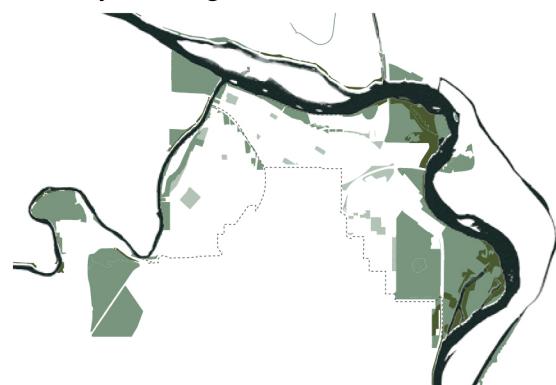
Ramsay and Ingwood Master Plan



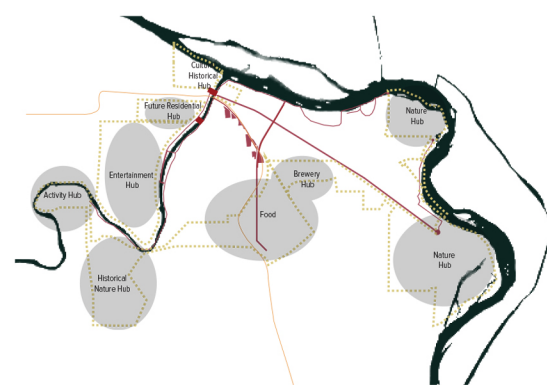
Alberta Prairies (concept image)
View from road to prairies, sense of an infinite space, varieties of colours and textures



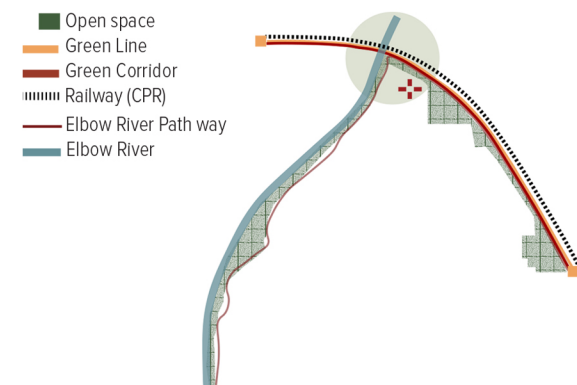
Perspective View. "Strategic Foci" operates as a conduit for the neighborhoods



Vegetation Systems
Link large natural areas and open spaces to Elbow River water edge
Create a new park, connected with the system of green spaces



Collect + Connect
Collect people, reveal history and aura of the neighbourhood and connect them through an enhanced pathway system



The site, a strategic node at the confluence of Bow River and Elbow River, performs as a funnel for users entering to Ramsay and Ingwood



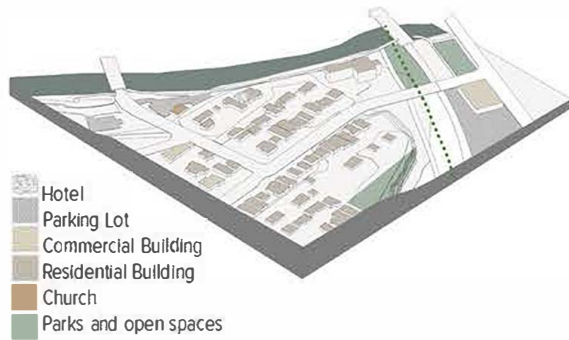
Section illustrates the context within the strategic node | Railway | Ingwood



Section illustrates the context within the strategic node | Fort Calgary | Elbow River



Photos from the Existing condition of the site and the surrounding context



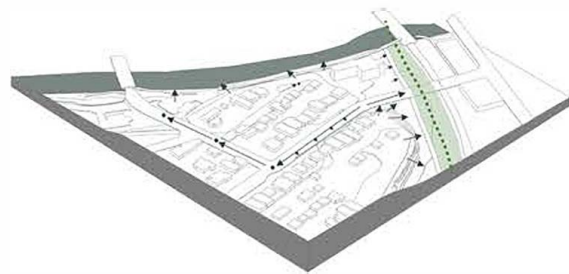
Property and Land Use



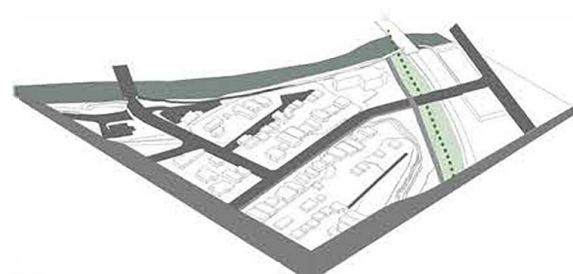
Vegetation



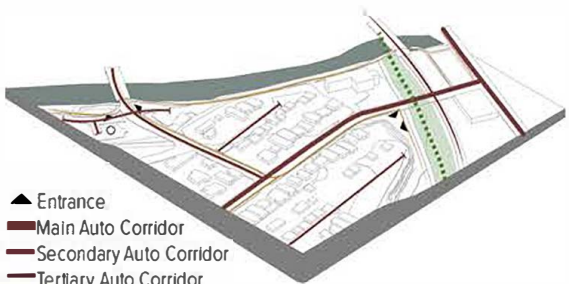
Section from the proposed Service Road along the Green Line and focus area



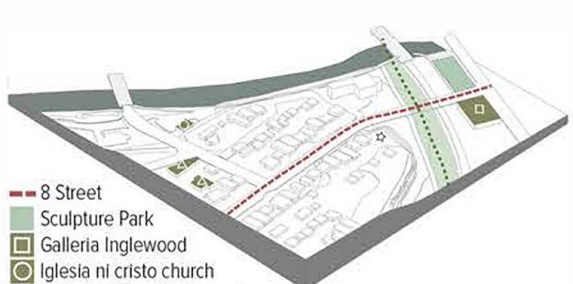
Landform and Drainage



Paving System



Circulation

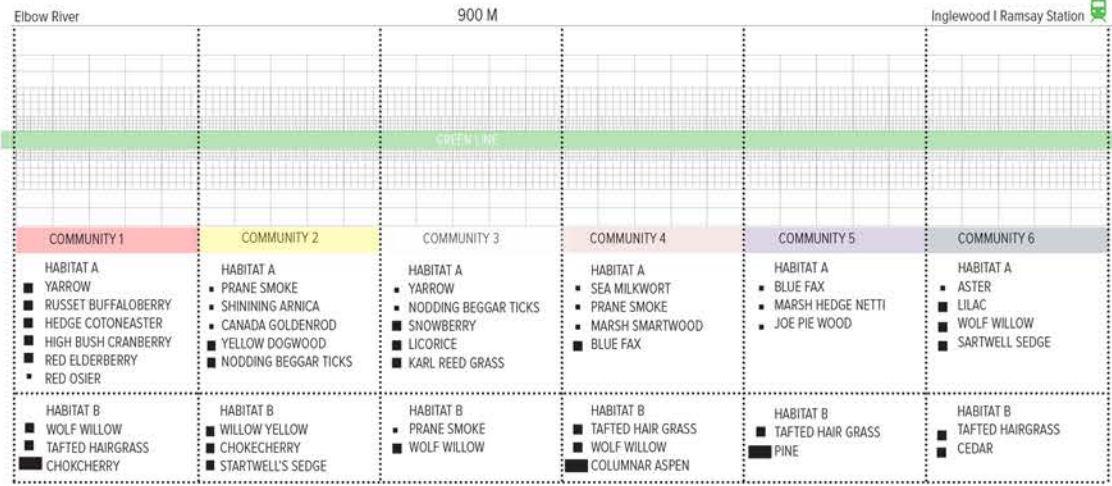


Perceptual Aspects

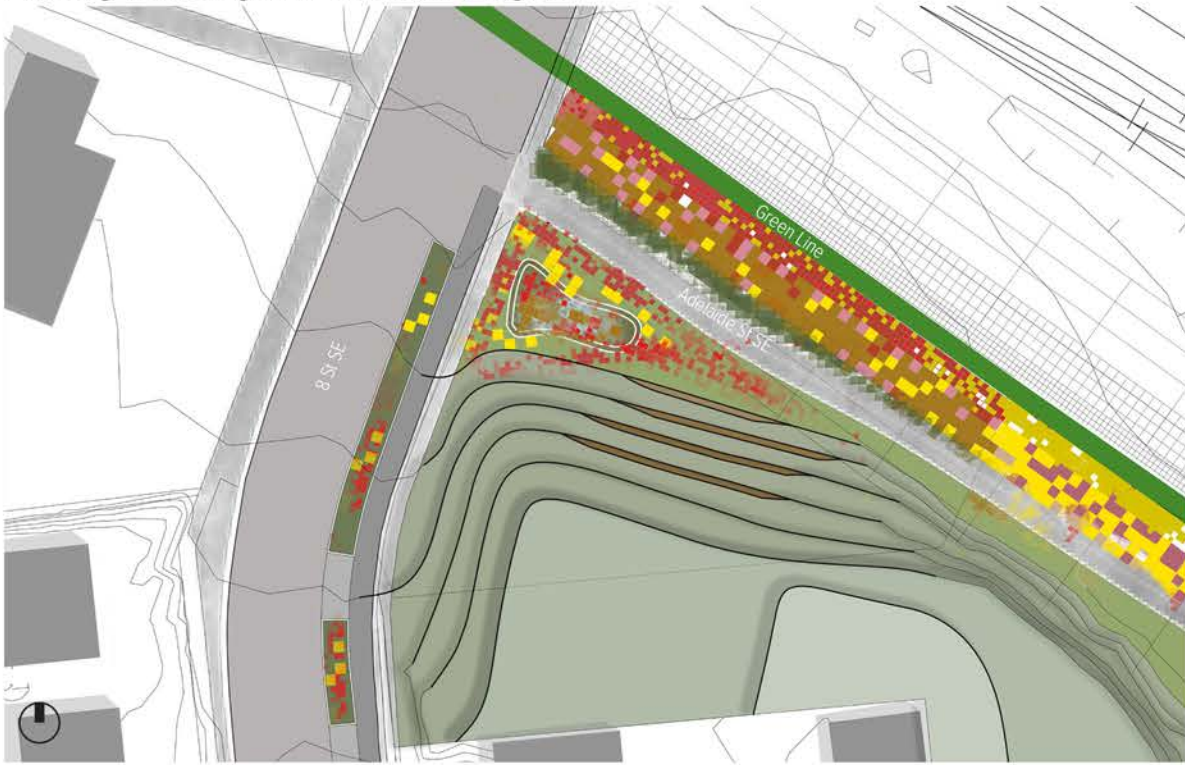


Perspective view from 8 St SE to Adelaide St SE

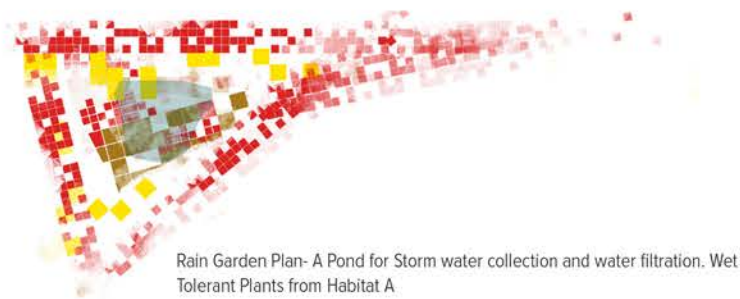
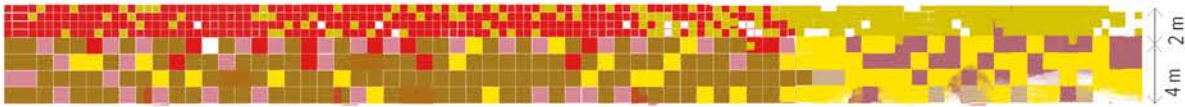
- Shrub | Perennial 0.20 m height- 0.50 m height
- Shrub | Perennial 0.50 m height- 1.50 m height
- Tree | Shrub 1.50 m height- 3.50 m height



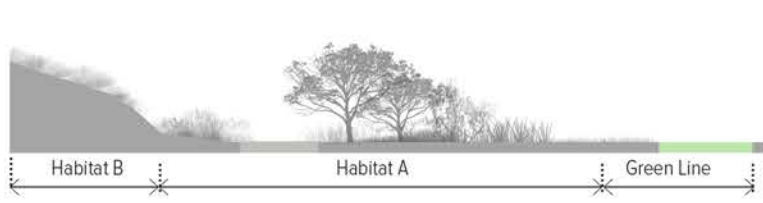
Planting Plan Diagram | Elevation Diagram



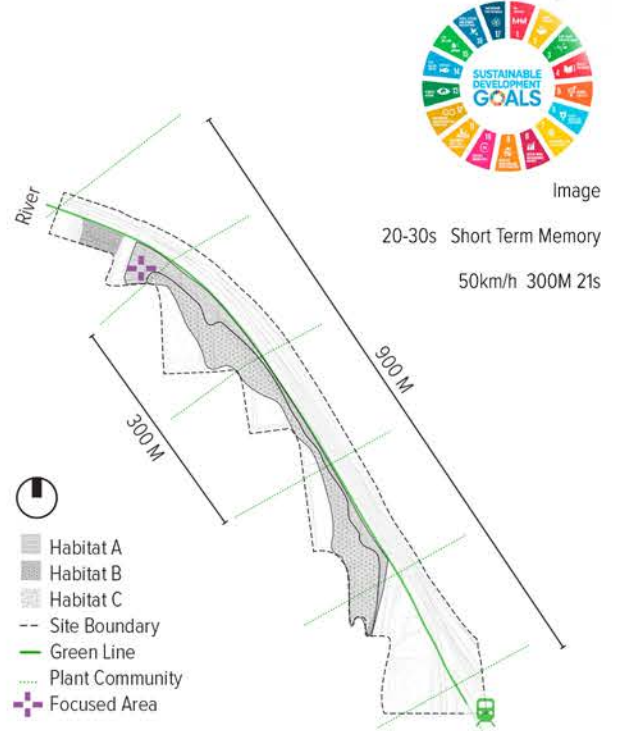
Proposal Plan



Detail Plan | Habitat A - Community 1



habitat A: wet, salt tolerant Plants
 Habitat B: moist, sun tolerant
 Habitat C: ample soil moisture along river banks



Plants Zoning Diagram



Bird's Eye View from the Motional Landscape



Image
 20-30s Short Term Memory
 50km/h 300M 21s

