

Country / City **Greece / Thessaloniki**

University / School **Aristotle University of Thessaloniki / School of Architecture, School of Agriculture**

Academic year **2018 - 2019**

Title of the project **Part of coastal front East Thessaloniki**

Authors **Kyvrakidou Maria - Soumela / Tsagkouri Areti**

## TECHNICAL DOSSIER

Title of the project Part of coastal front East Thessaloniki  
Authors Kyvrakidou Maria - Soumela / Tsagkouri Areti  
Title of the course Planning and Design of suburban, rural and natural landscapes  
Academic year 2018-2019  
Teaching Staff I.A. Tsalikidis, E. Athanasiadou, M.Lionatou, E.Charalampidis, V.Charistos  
Department/Section/Program of belonging Post-Graduate programme in LANDSCAPE ARCHITECTURE  
University/School Aristotle University of Thessaloniki / School of Architecture, School of Agriculture



Written statement, short description of the project in English, no more than 250 words

The climate is changing and with it the obligations and planning that each region must adopt to be protected. Our study area is part of coastal front of Thermaikos Bay. Thermaikos Bay is the largest bay in the Aegean Sea. It is a closed, relatively shallow bay, very important as a breeding ground for fish nationally, and crucial to the northern Aegean. According to the data that emerged from the analysis, our main guide for the design of the study area, was the preservation of the historicity of the place with the simultaneous protection, from vulnerability, of the coastal zone. Therefore, we create zones with hard but absorbent materials and plant installations that provide stability and protection from corrosion. The materials used go hand in hand with the historicity of the place (the existing shipyards) but into a museum also the ecological side of the design with the reuse of the remaining materials. The main building is transformed of shipbuilding history where the visitor will be able to learn about the history of the place and in combination with the design of the museum square will be able to be transferred to the previous environment of the area. Vertical and Horizontal phytoremediation zones help retain toxic remnants from previous use of the area. They encourage the visitor to explore the area, learn about it and protect it. Both the plantings and the main and secondary routes lead him to the sea and help him to have a breathtaking view of the park.

For further information  
Máster d'Arquitectura del Paisatge -DUOT - UPC

Máster d'Arquitectura del Paisatge -DUOT - UPC  
ETSAB- Escola Tècnica Superior  
d'Arquitectura de Barcelona  
Avenida Diagonal, 649 piso 5  
08028 Barcelona-Spain

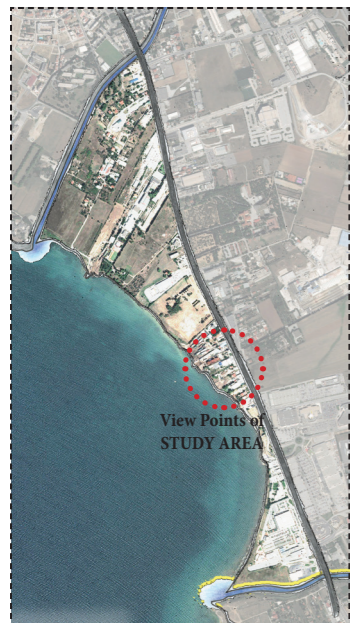
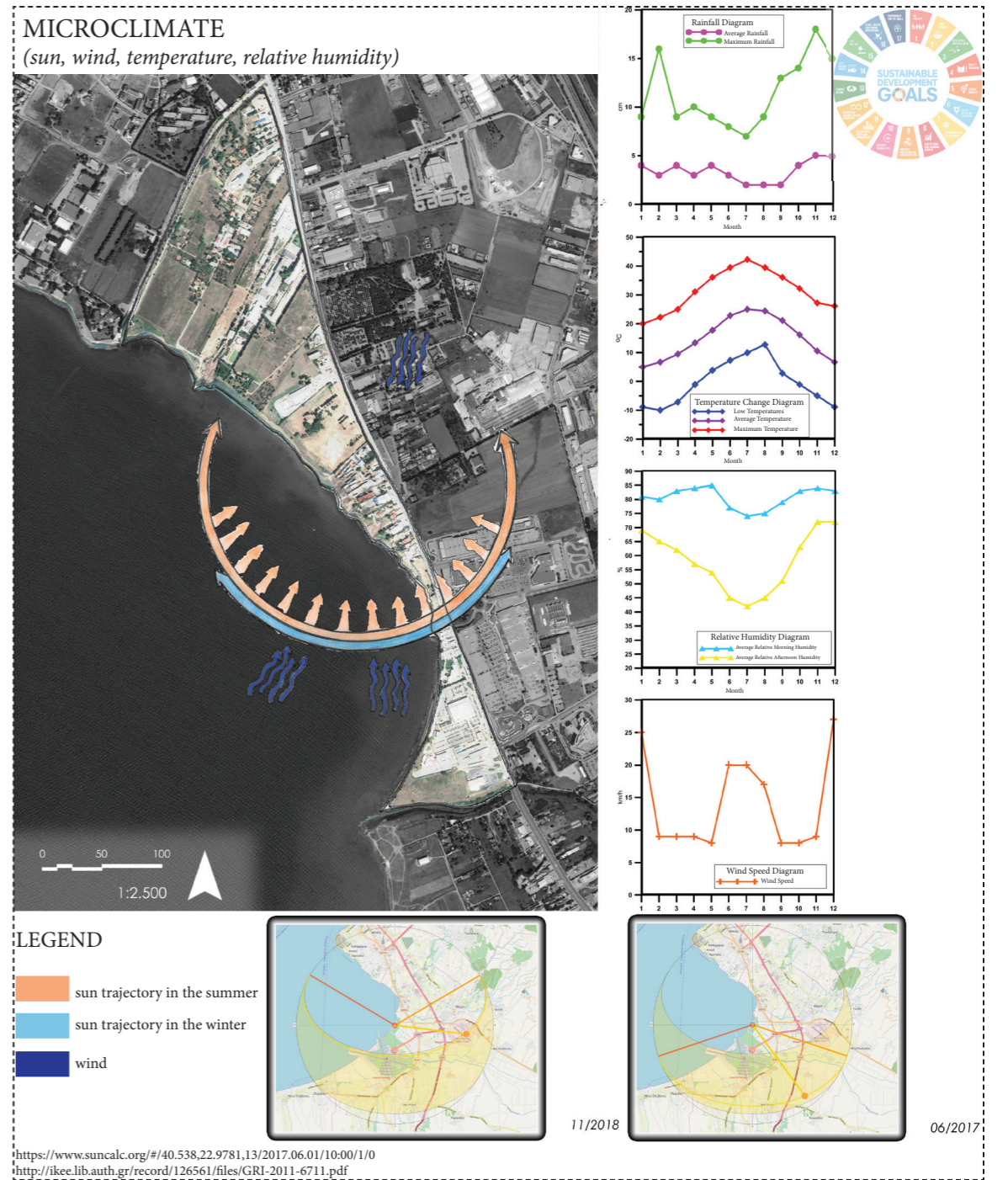
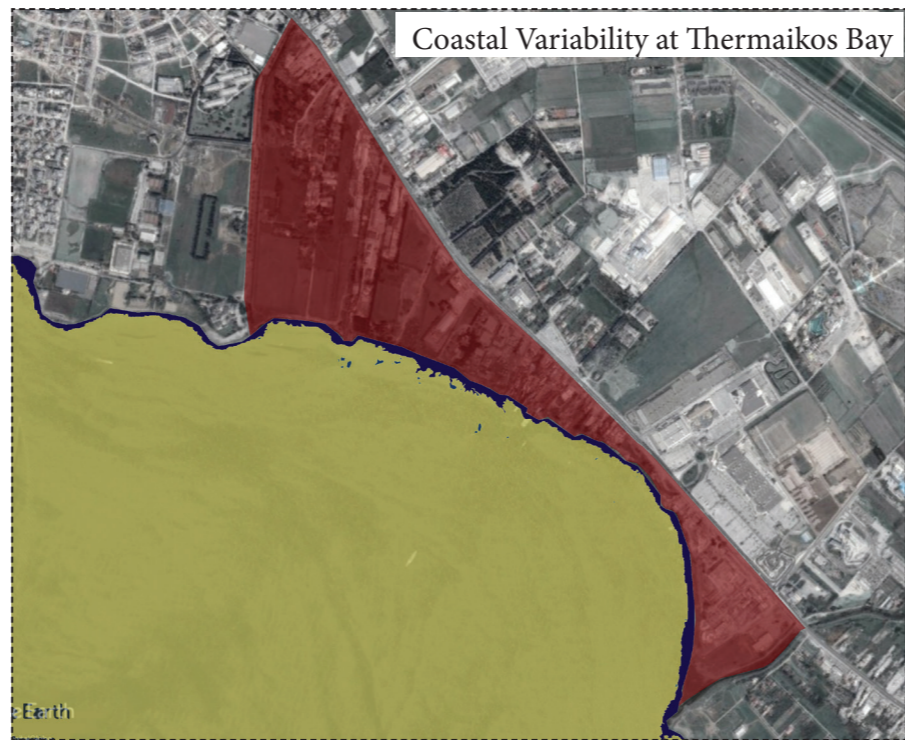
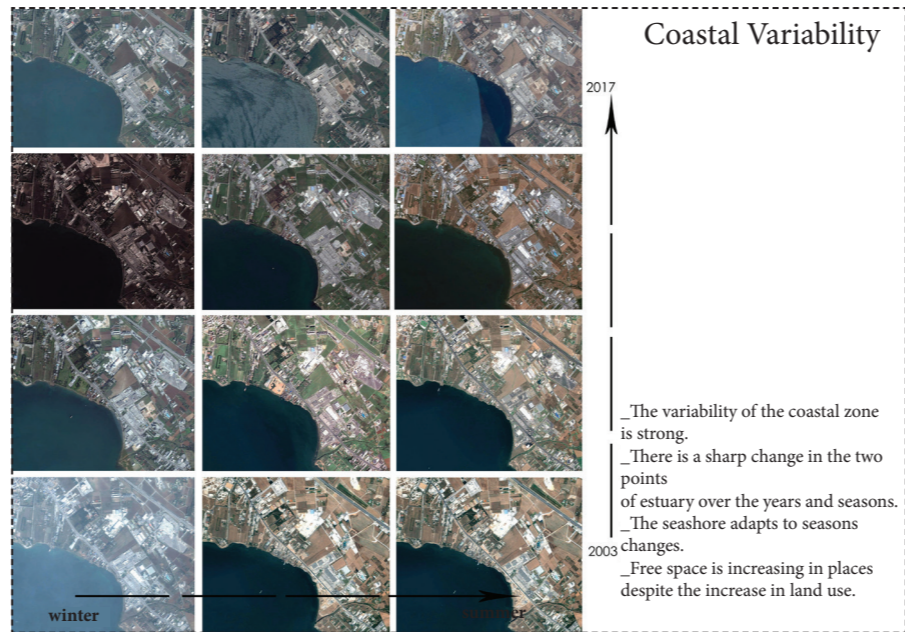
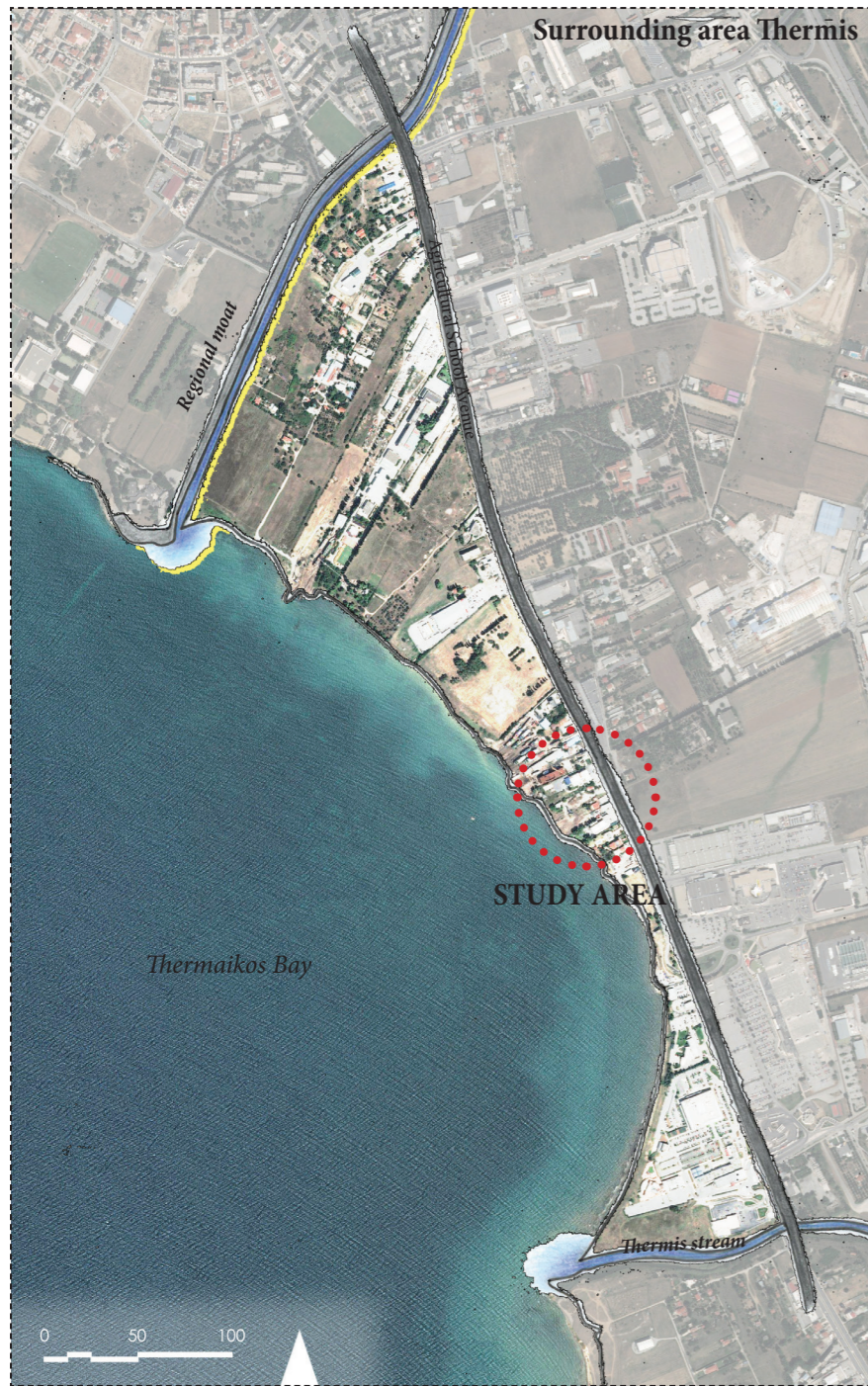
T: + 34 93 401 64 11 / +34 93 552 0842  
Contact via email at: biennal.paisatge@upc.edu



# CLIMATE CHANGE AGAIN




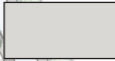






11th International Biennial Landscape Barcelona

Barcelona September 2020  
SCHOOL PRIZE



**LEGEND**

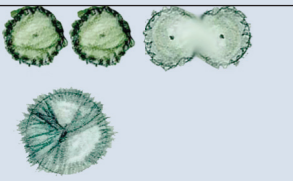
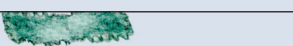
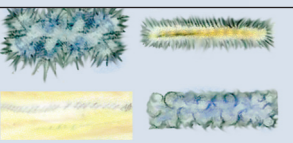


**MATERIALS**

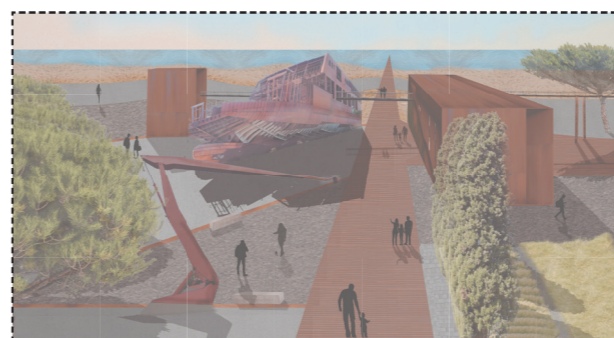
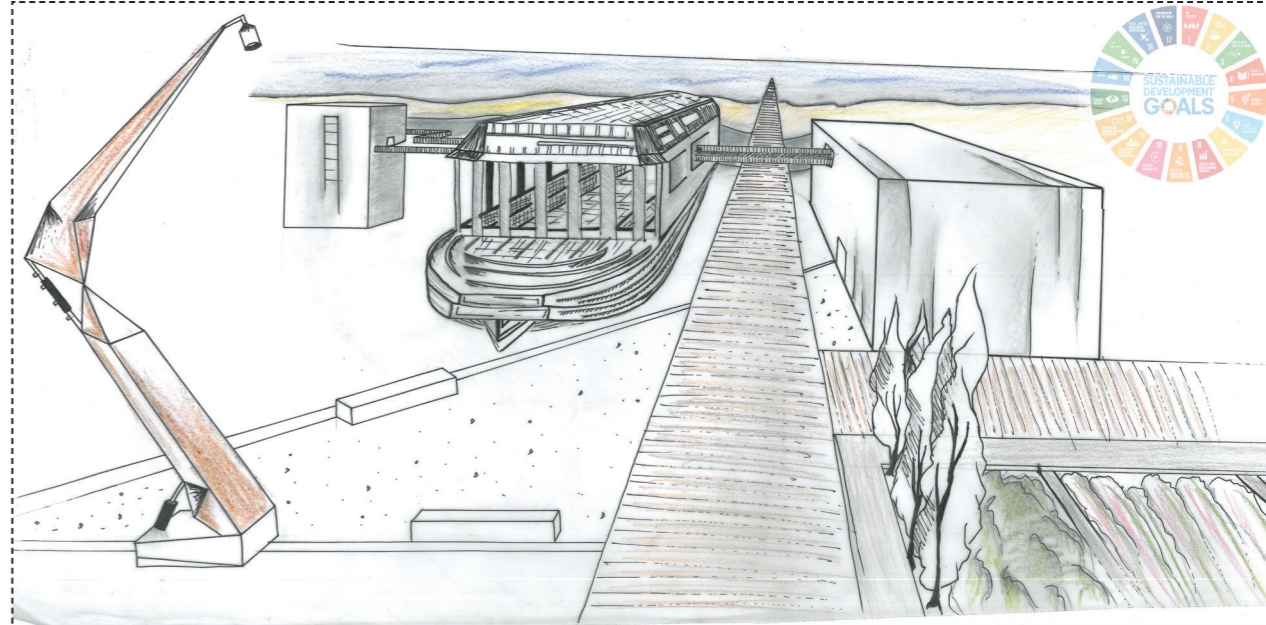
-  Grained concrete
-  Decomposed granite
-  Sand
-  Pavement
-  Road
-  Deck
-  Wooden seats
-  Concrete seats
-  Corten steel skywalk
-  Metal route



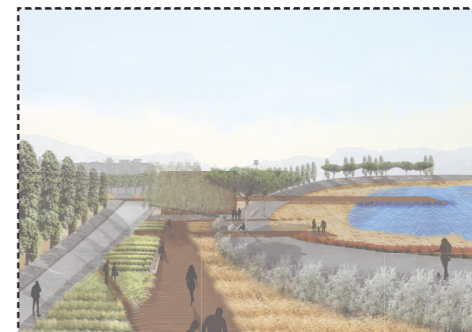
**LEGEND**

**PLANTS**

-  TREES
-  BUSHES
-  GRASSES
-  AQUATIC
-  LOWER GRASSES

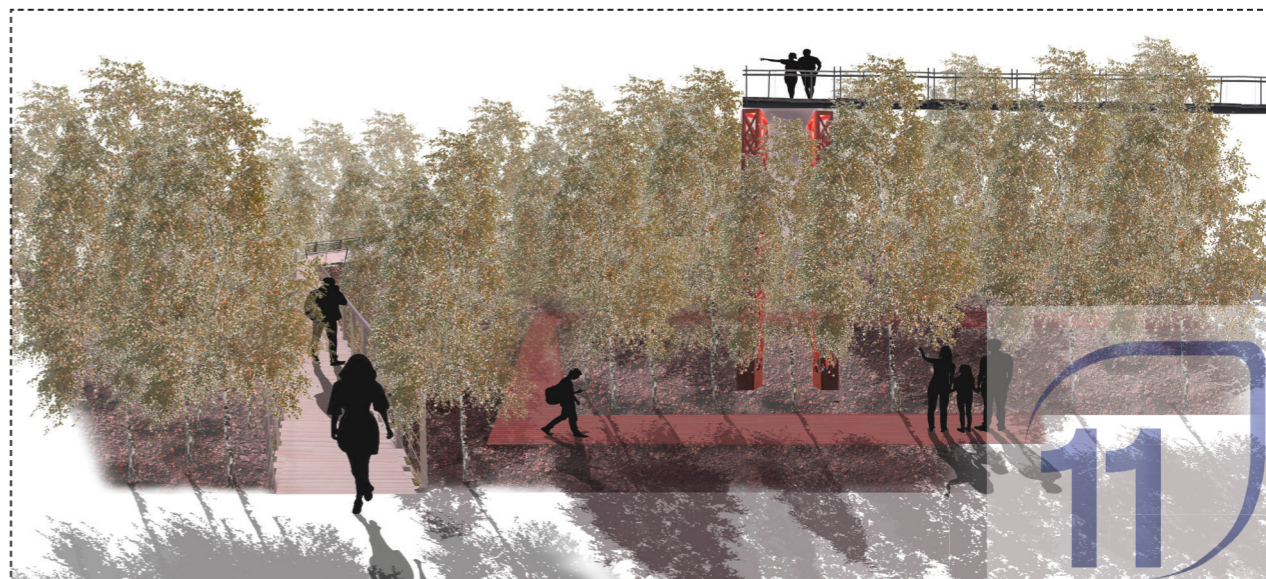


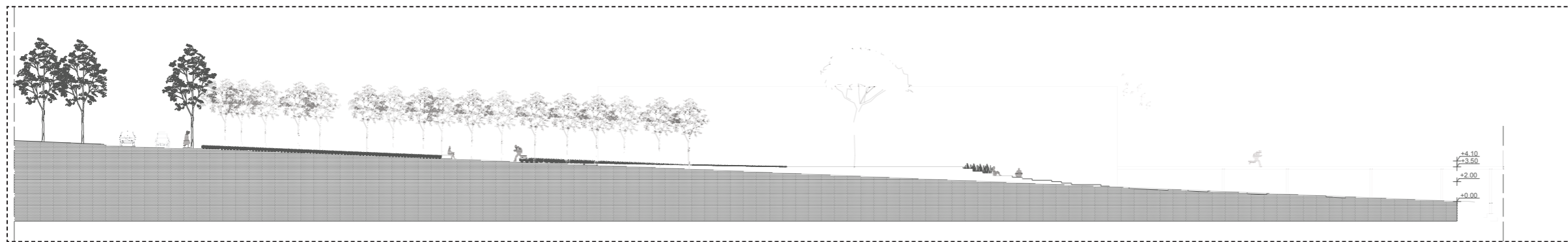
**MUSEUM PARK / SQUARE**  
 Source of inspiration is the history of the landscape of our study area. At the museum square will be placed iconic crane-like lights inspired by the industrial background of the shipyard that pre-existed there. The lights are made of Corten steel and the seats of concrete. Decomposed granite and grained concrete will be used as flooring materials. All these features, combined with the remaining ship's trunk will transfer visitors and users of the museum square to the former environment of the site.



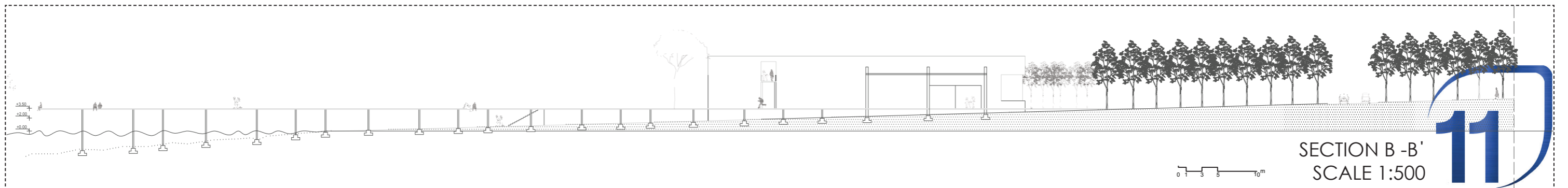
**REMEDICATION AND STABILITY ZONES**  
 Vertical and Horizontal phytoremediation zones help retain toxic remnants from previous use of the area. At the same time, the grasses and the aquatic plants that have been chosen, help fight the vulnerability of the coastal front of Thermaikos Bay by providing stability and resilience to climate change and air pollution. Plants were installed in two ways. At the first site herbaceous plants allow plenty of visual escape to the beach front. At the second site the plants installations direct the visitors to the coastal route and the sea. Deck pathways and concrete seats give more forms to this landscape.

**CORTEN STEEL SKYWALK**  
 The Corten steel skywalk has a double role. In addition to promoting the history of the shipyard, the skywalk gradually peaks, creating many levels of information: 1) panoramic view of the Betula thicket, 2) view to the plant remediation zones, 3) entrance and touring inside the museum area and 4) visual escape from the highest point of the ship's trunk where visitors can enjoy the design of the industrial park / square.





SECTION A - A'



SECTION B - B'  
SCALE 1:500

