



Country / City

V Region Valparaíso, Chile

University / School

Landscape and Sustainability Observatory, Diego Portales University. OPS UDP.

Academic year

2019

Title of the project

Public space in the streams

Authors

Cristian Antonio Seguel Medina

## TECHNICAL DOSSIER

Title of the project ..... Public space in the streams  
Authors ..... Cristian Antonio Seguel Medina  
Title of the course ..... Thesis process  
Academic year ..... 2019  
Teaching Staff ..... Claudio Magrini  
Department/Section/Program of belonging ..... Master.Landscape and Territory  
University/School ..... Landscape and Sustainability Observatory, Diego Portales University. OPS.UDP.



### Written statement, short description of the project in English, no more than 250 words

As a result of the great urban fire that occurred in the city of Valparaíso in 2014, the streams became important environmental axes for threat control. Additionally, climate change has affected cities, the streams have been heavily degraded, mainly due to anthropogenic factors that exist in the interior, increasing and diversifying the threats and the risk factor.

The following research aims to develop a public space based on the resources of geographic landscapes, such as a stream, for the reduction of the risk factor and environmental restoration. Developing from the field of action that offers the study of architecture, landscape and territory, the design and planning of a micro-basin inserted in a city like Valparaíso requires addressing the problems set out above in a holistic and comprehensive way, enhancing the role strategic that the streams maintain due to their environmental and landscape value, recognizing the ecological variables in the formulation and resolution of projects with sustainability criteria in the use and management of the natural environment. Although there are various theories and axes of action applicable in a landscape intervention, each territory is singular and unique, which determined that during the process the character of public space was glimpsed as a fundamental factor, understanding natural resources and the risk present in the context. In this sense, the public space project in Quebrada Jaime, gives relevance to the recognition of the landscape as an integrating element, which manages natural resources and proposes a solution to reduce the risk factor.

For further information  
**Máster d'Arquitectura del Paisatge -DUOT - UPC**

T: + 34 93 401 64 11 / +34 93 552 0842  
Contact via email at: [biennal.paisatge@upc.edu](mailto:biennal.paisatge@upc.edu)

**Máster d'Arquitectura del Paisatge -DUOT - UPC**  
ETSAB- Escola Tècnica Superior  
d'Arquitectura de Barcelona  
Avenida Diagonal, 649 piso 5  
08028 Barcelona-Spain

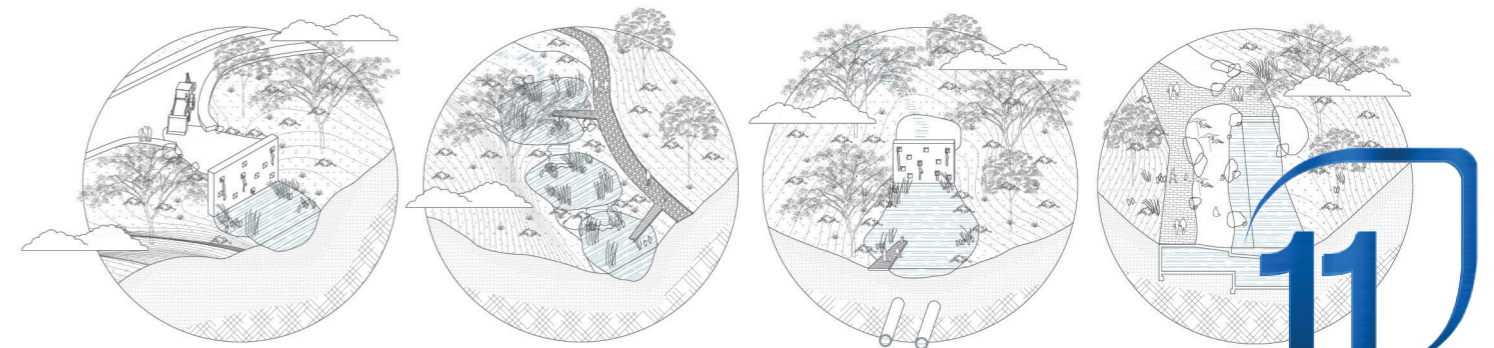
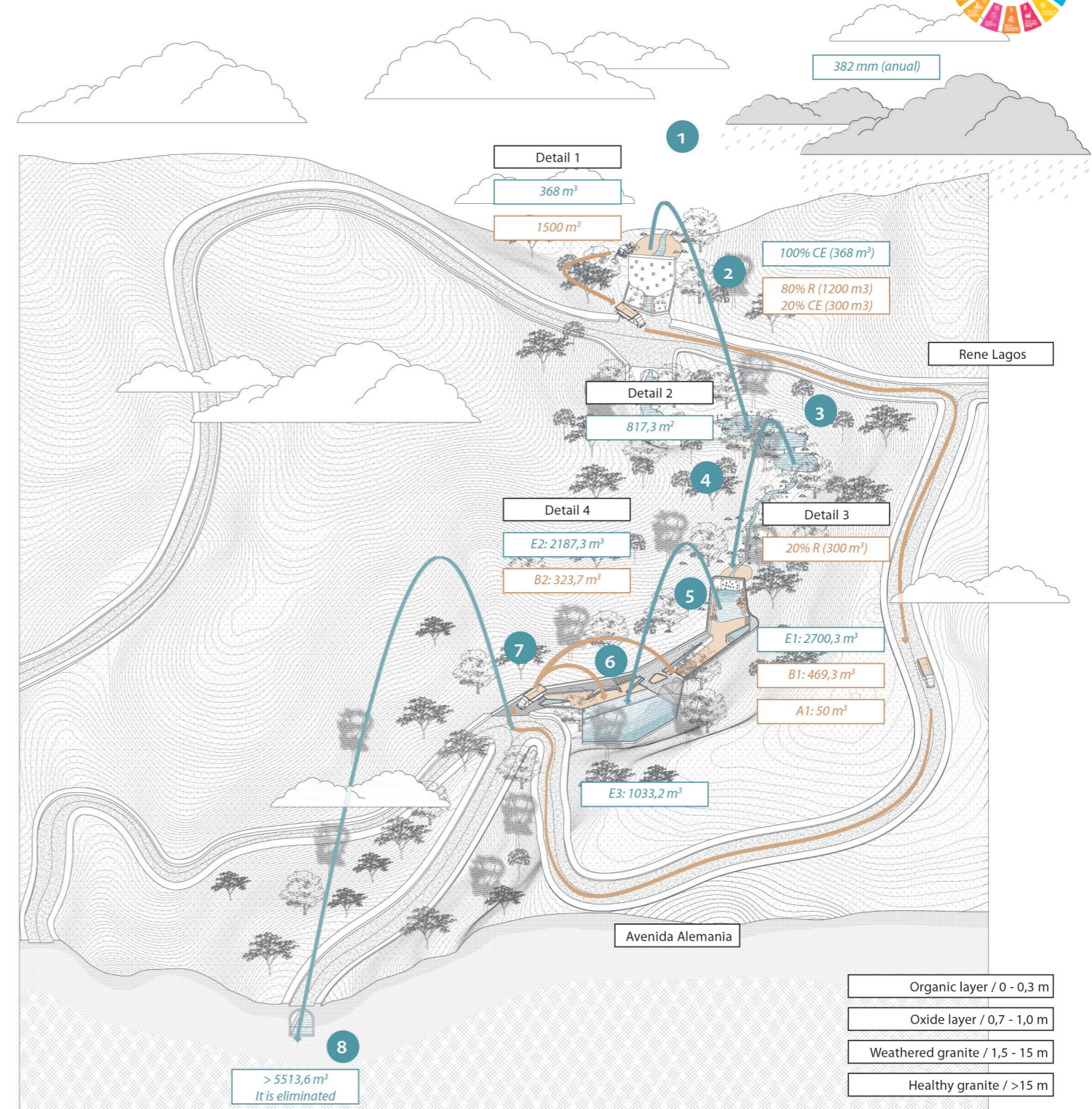
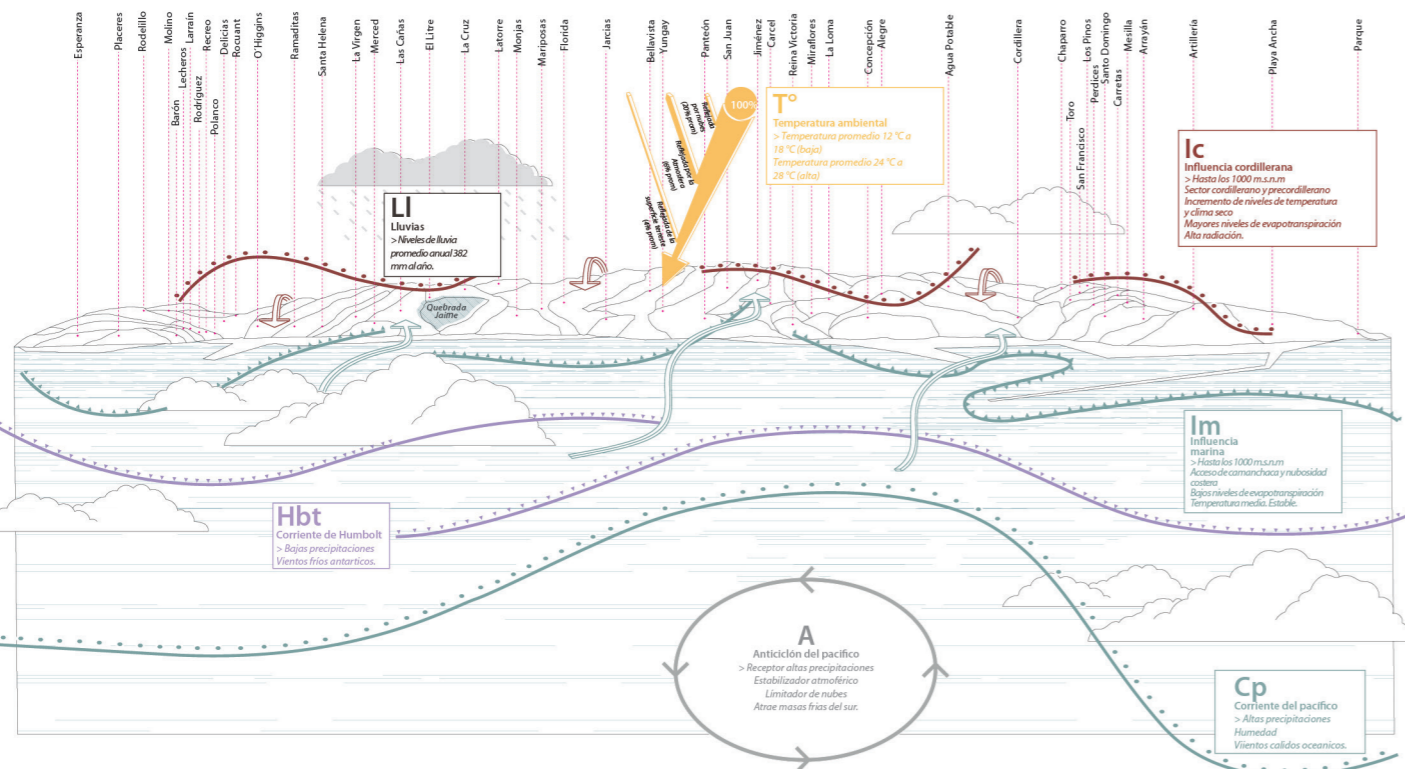
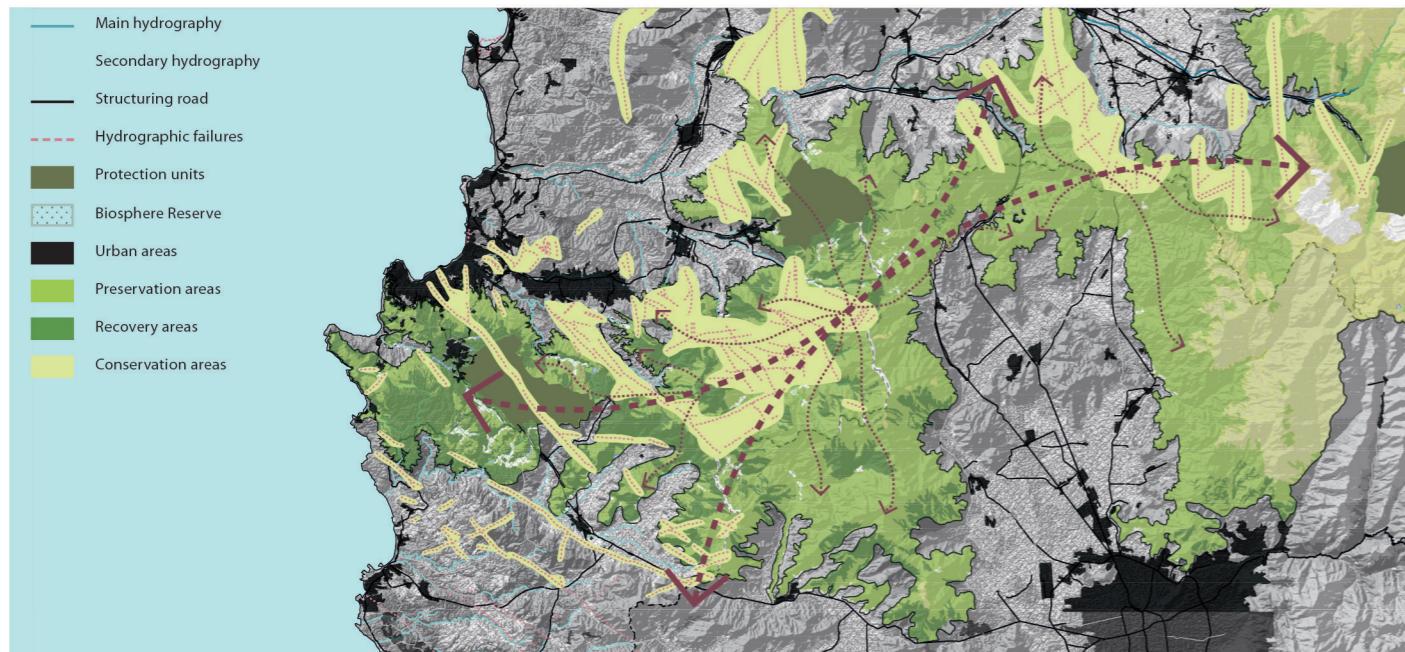
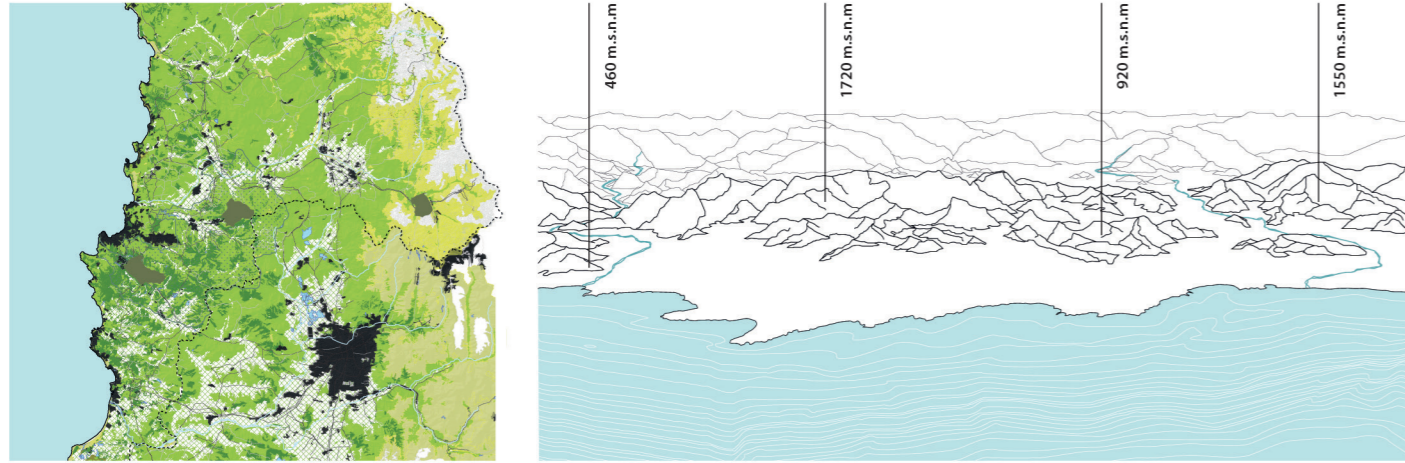


# CLIMATE CHANGE AGAIN

11th International Biennial Landscape Barcelona

Barcelona September 2020  
SCHOOL PRIZE

# ESPACIO PÚBLICO EN LAS QUEBRADAS / PUBLIC SPACE IN THE STREAMS

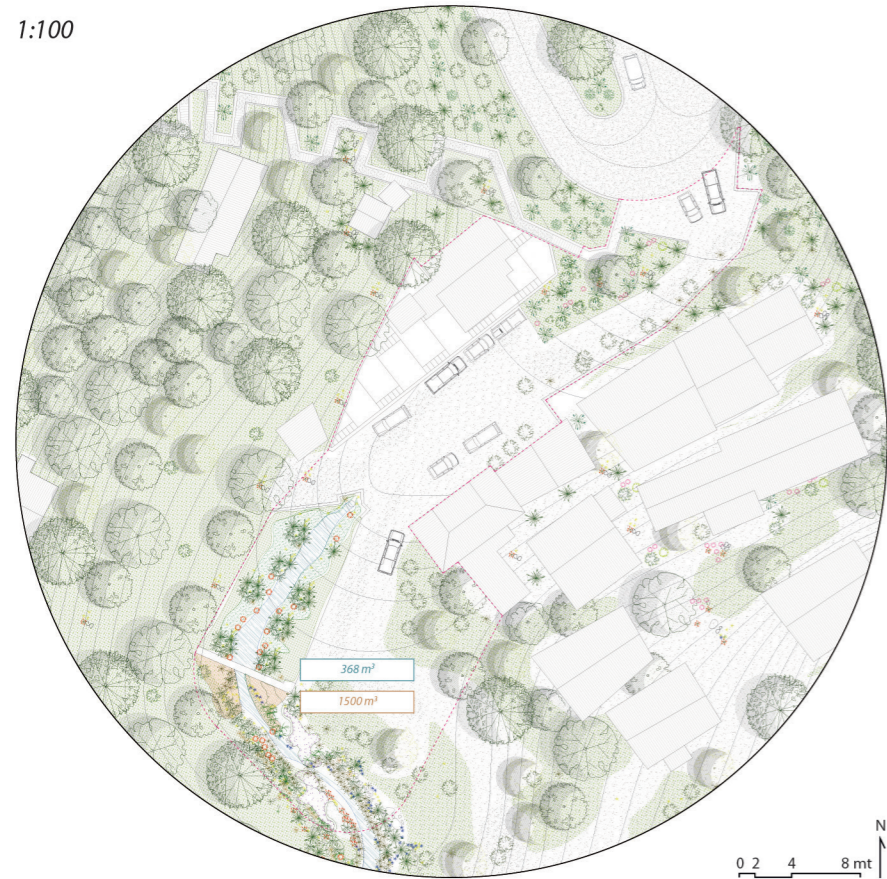


Detail 1      Detail 2      Detail 3      Detail 4

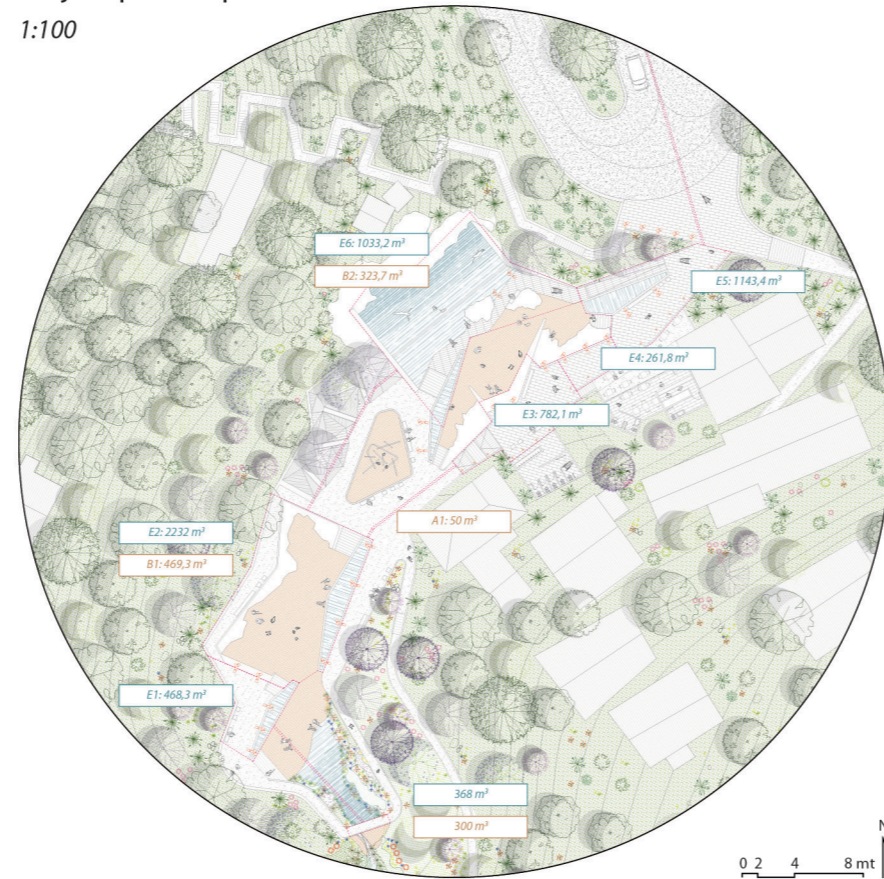
# ESPACIO PÚBLICO EN LAS QUEBRADAS / PUBLIC SPACE IN THE STREAMS



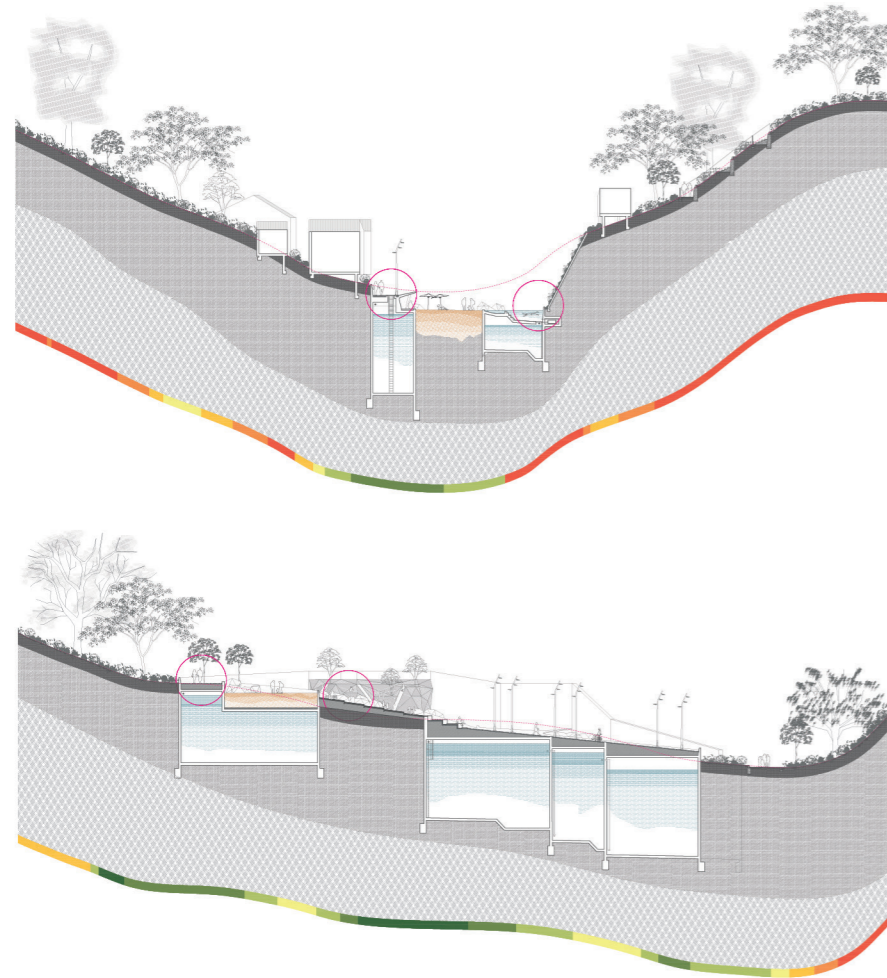
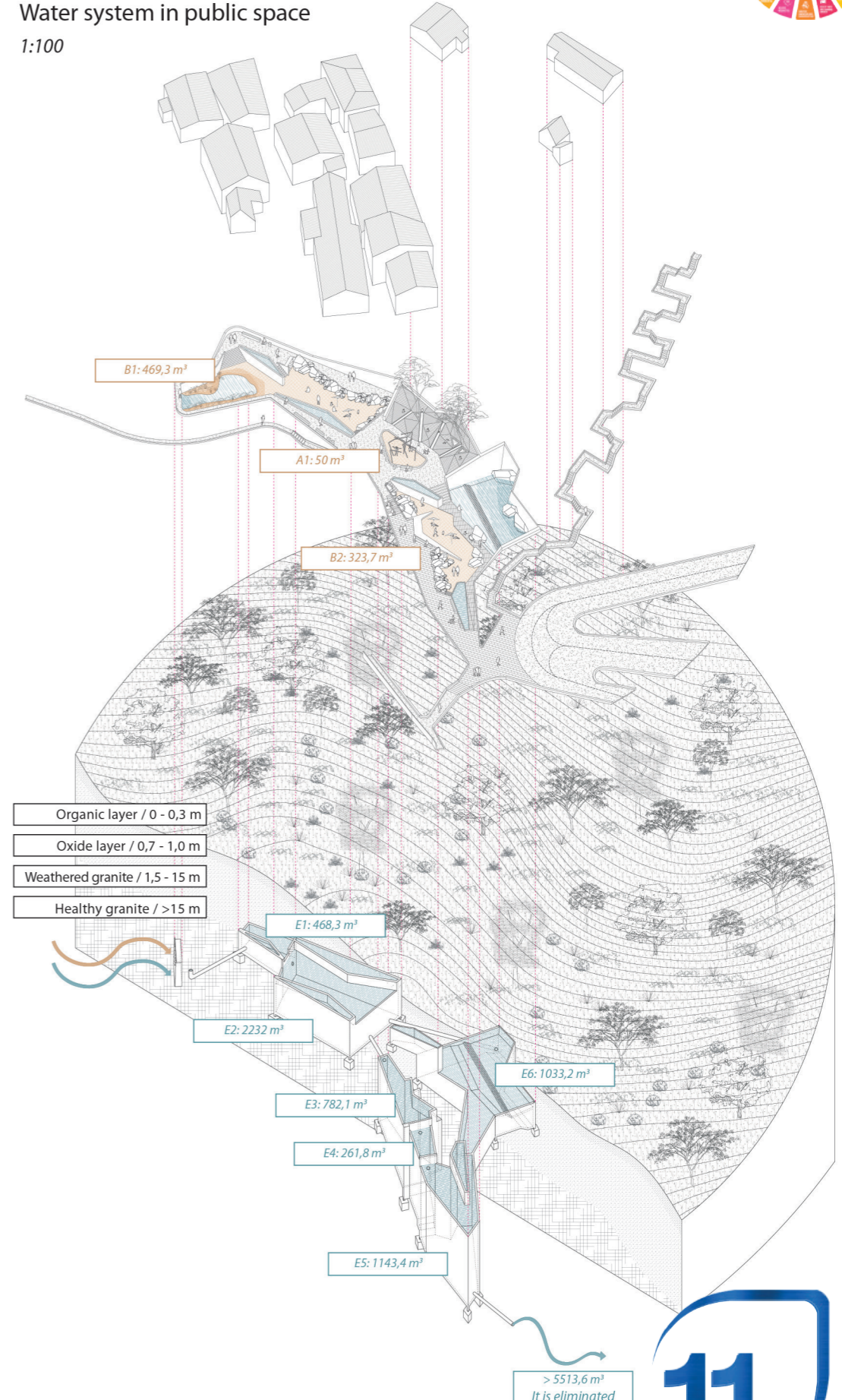
Work area  
1:100



Project public space  
1:100



Water system in public space  
1:100



KIT	Element of public space	CATALOG OF Pavements	CATALOG OF Contentions	CATALOG OF Stairs	CATALOG OF Luminary	CATALOG OF Furniture
Pavements	Pa 1   Baldosa microvibradas - Podotactil	Pa 1.1   Baldosa microvibradas - Podotactil	Co 1   Solerilla tipo canto redondo	Es 1   Pendiente suave: huella 15 - 20 cm; contrahuella 110 - 120 cm	Lu 1   A piso: 0 - 10 cm	Mo 1   Biciclitero
	Pa 2   Hormigón drenante	Pa 2.1   Pavimento de caucho continuo	Co 2   Solera zarpa tipo manquehue o L	Es 2   Pendiente media: huella 15 - 20 cm; contrahuella 70 - 80 cm	Lu 2   Baja altura: 10 - 120 cm	Mo 2   Bebedero prefabricado hormigón
Contentions	Pa 3   Grava enseñada - gravilla	Pa 4.1   Adoquin tipo A, entrelazado en cuatro costados	Co 3   Durmiente(s) madera, sección variable	Es 3   Pendiente media: huella 20 cm; contrahuella 50 cm	Lu 3   Media altura: 2,2 - 4,0 mt	Mo 2.1   Bebedero
	Pa 3.1   Arena conchuela	Pa 5.1   Adoquin tipo B, entrelazado en dos costados	Co 4   Gaviones de piedra, material vegetal u otro	Es 4   Gradas: huella 80 - 100 cm; contrahuella 40 - 60 cm	Lu 4   Gran altura: Sobre 6,0 mt	Mo 3   Contenedor de desperdicios prefabricado hormigón u otro
Stairs	Pa 3.2   Maicillo	Pa 5.2   Adoquin tipo C, rectangulares		Es 5   Rampa: Según decreto N° 50, Art. 4.1.7 de la OGUC	Lu 5   De paneles fotovoltaicos: Altura variable	Mo 3.1   Contenedor de desperdicios

Total accumulated water: 5513,6 m³  
Total accumulated sediment: 843 m³

> 5513,6 m³  
It is eliminated



# ESPACIO PÚBLICO EN LAS QUEBRADAS / PUBLIC SPACE IN THE STREAMS



Urban agriculture



Beach inside the streams



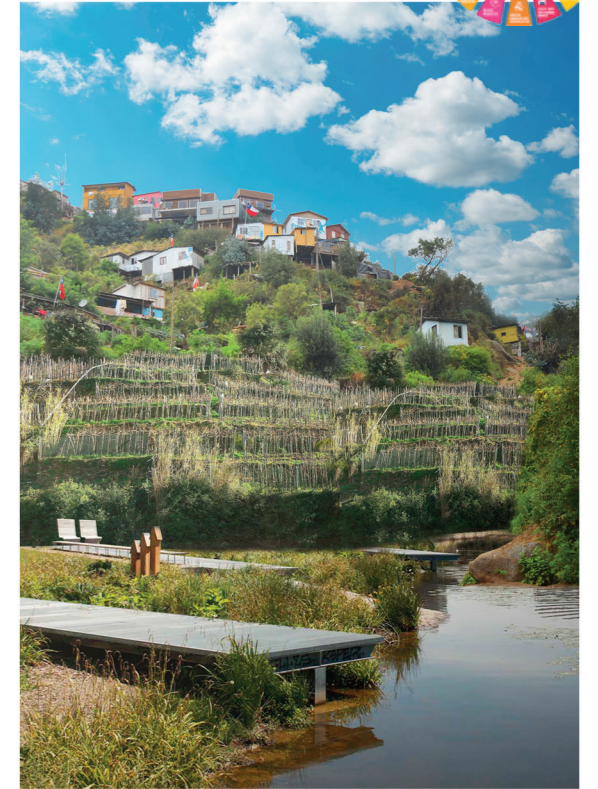
Beach inside the streams



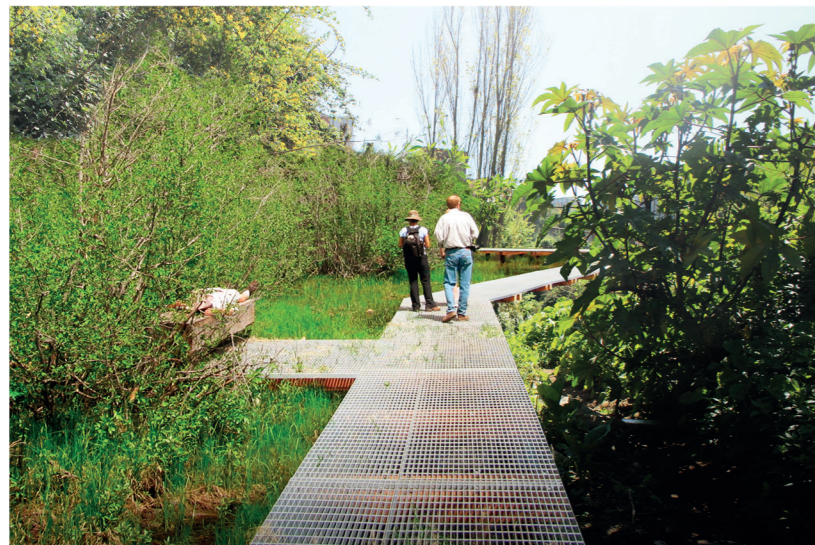
Agriculture inside the streams



Public Space in the streams



Rural project in the streams



Walking trails



Beach inside the streams



Urban project in the streams



Walking trails



Urban project in the streams



Playground zone