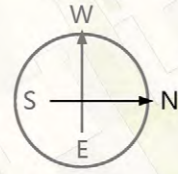


MASTERPLAN - 1



0 50m 100m

- - - perimeters of the project
- - - perimeters of the botanical park
- - - section line
- entrance/exit



Country / City Italy-Rome

University / School Sapienza University of Rome

Academic year AY. 2018-2019

Title of the project New panoramic route on the Janiculum

Authors Student.Lianfeng Geng-Tutor Prof. Fabio Di Carlo,co-supervisor Dr. Daniele Stefano.

TECHNICAL DOSSIER

Title of the project	New panoramic route on the Janiculum
Authors	Lianfeng Geng
Title of the course	Landscape architecture
Academic year	AY. 2018-2019
Teaching Staff	Prof. Fabio Di Carlo,co-supervisor Dr. Daniele Stefano.
Department/Section/Program of belonging	Faculty of Architecture
University/School	Sapienza University of Rome



Written statement, short description of the project in English, no more than 250 words

The project proposal is a new panoramic route, which from the Gianicolo Hill looks towards the centre of Rome.

The area is located between the Garibaldi square and Botanical Garden. On the Janiculum, there are many famous historical monuments, which define the value attributes of the city, a public area whose values limit the design action but are at the same time a challenge, a source of inspiration and an opportunity for a new design. The Janiculum has abundant vegetation. The Janiculum walk walks on a ridge, with geography that offers some of the fascinating views of Rome. The area has now several disadvantages: steep slopes and rough roads; many steps and lots of physical activity to enjoy its qualities. Too many cars, few buses, and narrow sidewalks also pose a risk to personal safety. Furthermore, in some places, the uncultivated vegetation limits the view of the panorama towards Rome.

The project aims to highlight the unique characters of the place.

The idea is to build an elevated panoramic route between the Peak Road and the Botanical Garden, which connects essential nodes, to which are added observation platforms, of the Belvedere. This will further activate the use of the area, allowing you to move freely and easily between monuments and points of landscape value. The gentle ups and downs, the low-speed route designed for walking and bicycles, will significantly reduce the physical load of visitors and provide a new and comfortable experience.

For further information
Máster d'Arquitectura del Paisatge -DUOT - UPC

T: + 34 93 401 64 11 / +34 93 552 0842
Contact via email at: biennal.paisatge@upc.edu

Máster d'Arquitectura del Paisatge -DUOT - UPC
ETSAB- Escola Tècnica Superior
d'Arquitectura de Barcelona
Avenida Diagonal, 649 piso 5
08028 Barcelona-Spain



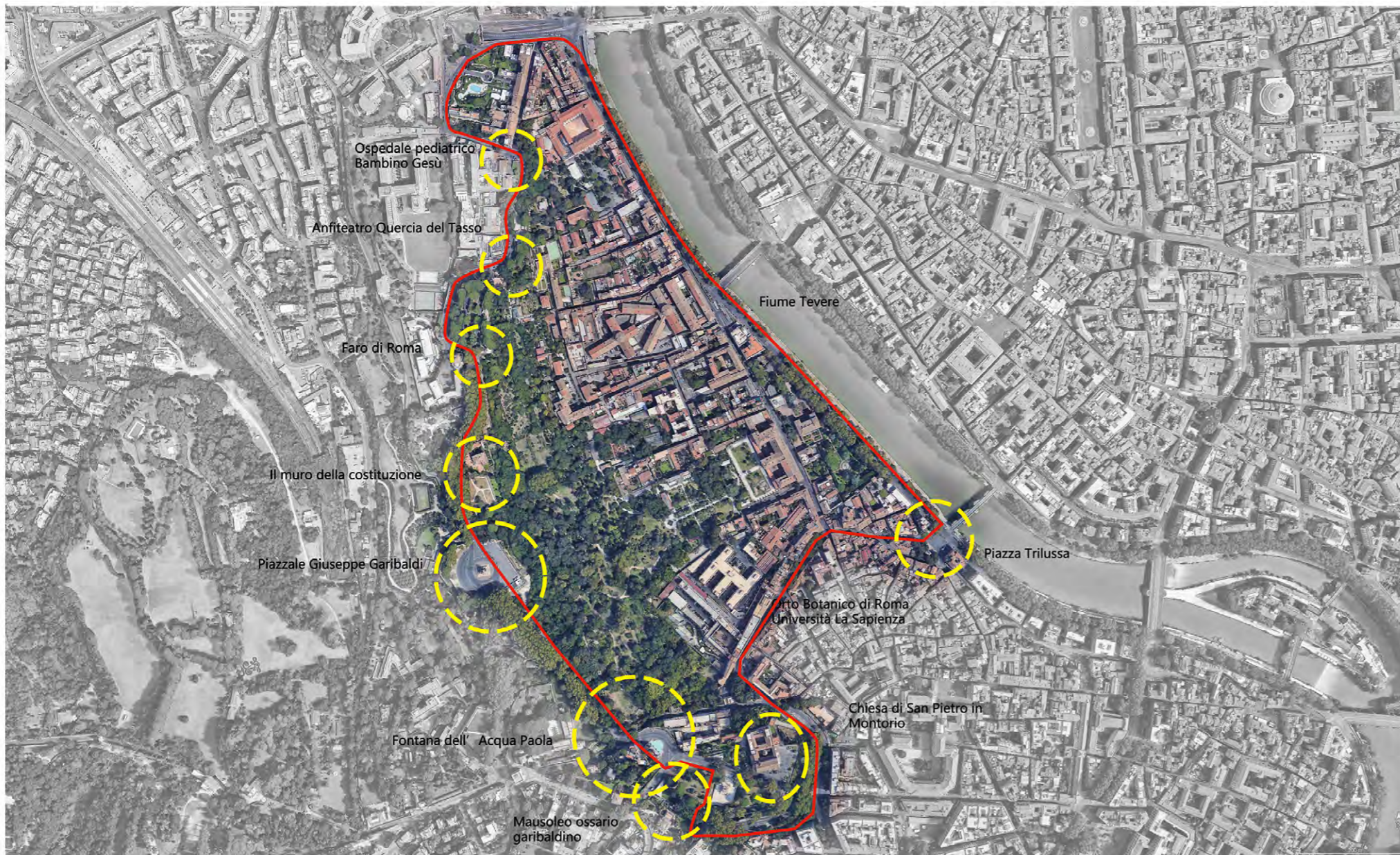
CLIMATE CHANGE AGAIN

11th International Biennial Landscape Barcelona

Barcelona September 2020

SCHOOL PRIZE

The general situation of the project



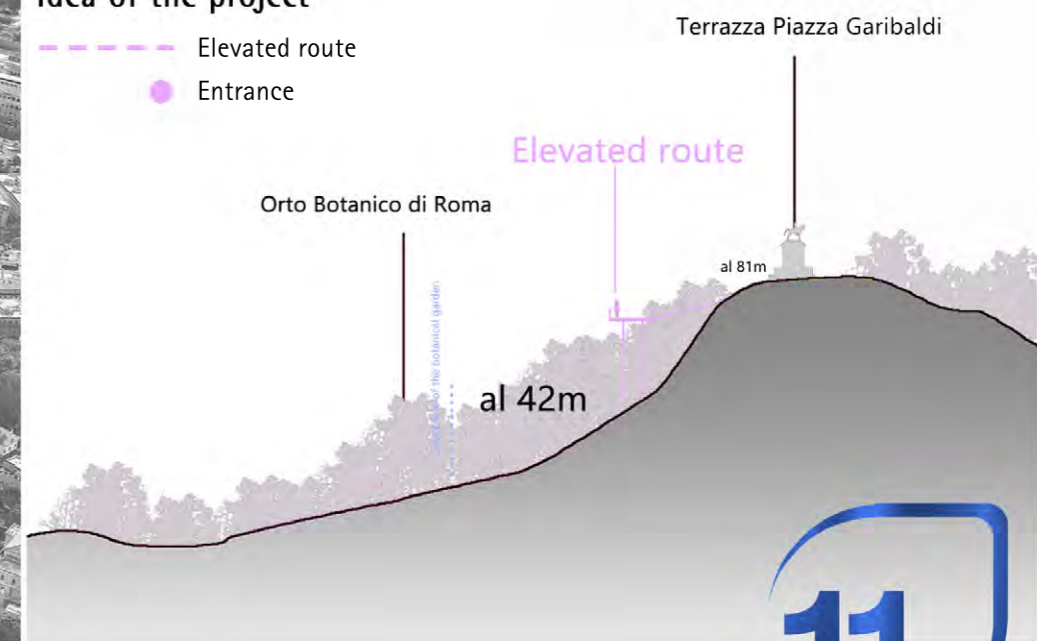
- Area masterplan
- Mountain Gianicolo
- Points of interest

1. The area under study falls within the territory of Municipalities 1, XII and XIII of Rome, between the districts Trastevere (to the east), Aurelio (to the west) and Gianicolense (to the south), located on Mount Gianicolo at 80m s.l.m. and lapped to the east by the Tiber river.
2. The Janiculum has abundant vegetation. It is home to the Botanical Garden and many gardens, public and private. The Janiculum walk walks on a ridge, with geography that offers some of the fascinating views of Rome. For these reasons, the area has a high historical, natural, economic and social value. It is a must for tourists as well as for the Romans, who come to stroll and enjoy the landscape. All of this limits the accessibility and comfort of visitors.
3. The project aims to highlight the unique characters of the place. The use of the area, allowing you to move freely and easily between monuments and points of landscape value.



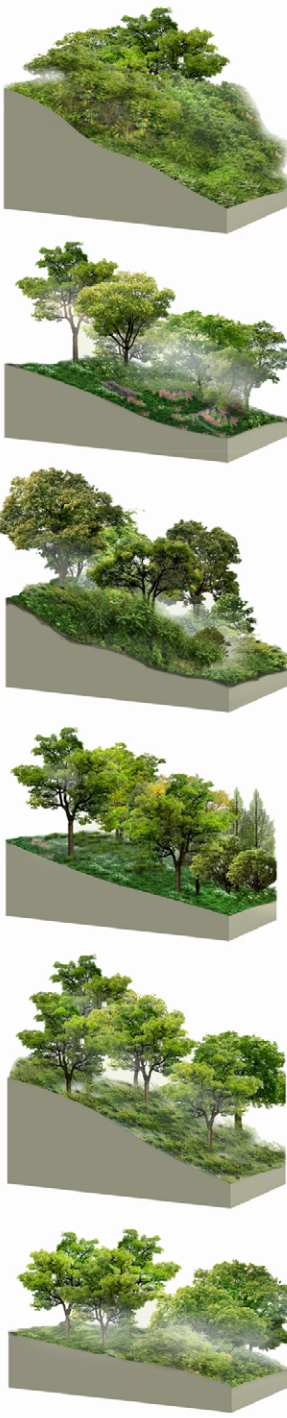
Idea of the project

- - - Elevated route
- Entrance





VEGETATION ANALYSIS AND METAPROJECT



Ailanthus altissima, Cupressus sempervirens, Anisantha sterilis, Laurus nobilis, cestrum parqui, Quercus ilex, Hedera colchica



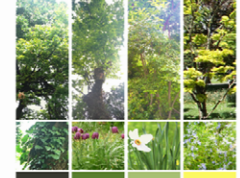
Quercus robur, Hedera helix, Acer saccharinum, Laurus nobilis, Acer palmatum, Rosmarinus officinalis



Quercus ilex, Rubus ulmifolius, Schott Ailanthus altissima, Cedrus Libani, Acanthus mollis L, Cercis siliquastrum



Robinia pseudoacacia, Quercus robur, Laurus nobilis, Acanthus mollis, Acer campestre, Poa annua



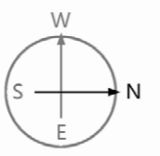
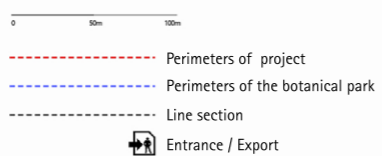
Quercus ilex, Bambu Phyllostachys, Cercis siliquastrum, Ulmus minor, Ailanthus altissima, Olea europaea



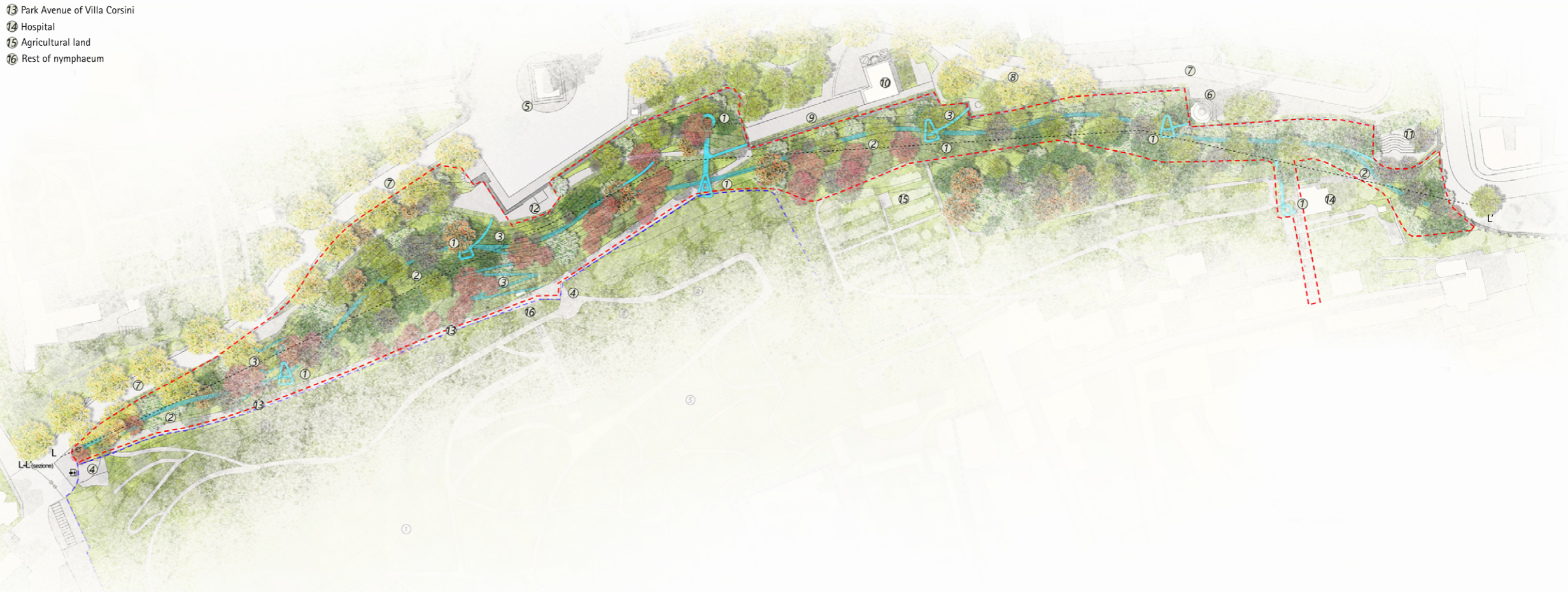
Quercus robur, Hedera colchica, Laurus nobilis, Hedera helix, Celtis australis, Anisantha sterilis, Robinia pseudoacacia, Arctium minus



METAPROJECT



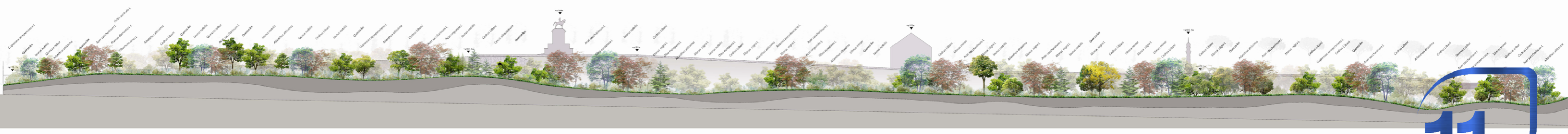
- ① High terrace for the panorama of the center of Rome
- ② Main elevated path
- ③ Secondary elevated path
- ④ Botanical garden entrance
- ⑤ Gianicolo square
- ⑥ Lighthouse of Rome
- ⑦ Janiculum walk
- ⑧ Piazza del Faro
- ⑨ The wall of the Roman constitution
- ⑩ Embassy of Finland
- ⑪ Tasso Oak Amphitheater
- ⑫ Gianicolo Midday Cannon
- ⑬ Park Avenue of Villa Corsini
- ⑭ Hospital
- ⑮ Agricultural land
- ⑯ Rest of nymphaeum



THE PLANTS OF THE BOTANICAL

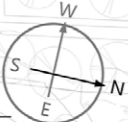
- ① **COLLECTIONS**
The Palms Collection The Palms collection is of great importance due to the large number of entities grown outdoors (35 species), most representative genera are Phoenix, Trachycarpus and Sabal.
- ② **The Rock Garden and Geophytes area**
genera Gladiolus, Fritillaria, Narcissus, Hyacinthus, Tulipa and some Mediterranean species, including Rosmarinus officinalis L, Pistacia lentiscus L, Erica spp., Phillyrea angustifolia Ly Calluna vulgaris
- ③ **The Japanese Garden**
with water features, small waterfalls and two ponds. Among the 40 species present, Acer buergerianum Miq, Acer palmatum Thunb are highlighted
- ④ **The Mediterranean forest**
Among the tree species (about fifteen) oaks prevail, among which Quercus ilex L, Quercus pubescens Willd., Quercus robur L and Quercus petraea (Matt.) Liebl. Are present
- ⑤ **Gymnosperms**
The collection of Gymnosperms (some shrub species, among the 70 species) of the genera Podocarpus, Pinus, Cupressus and Torreya.

L-L'(section)



DEEPEN THE DESIGN

PROGETTO APPROFONDITO



0 50m 100m

Ingresso/uscita

