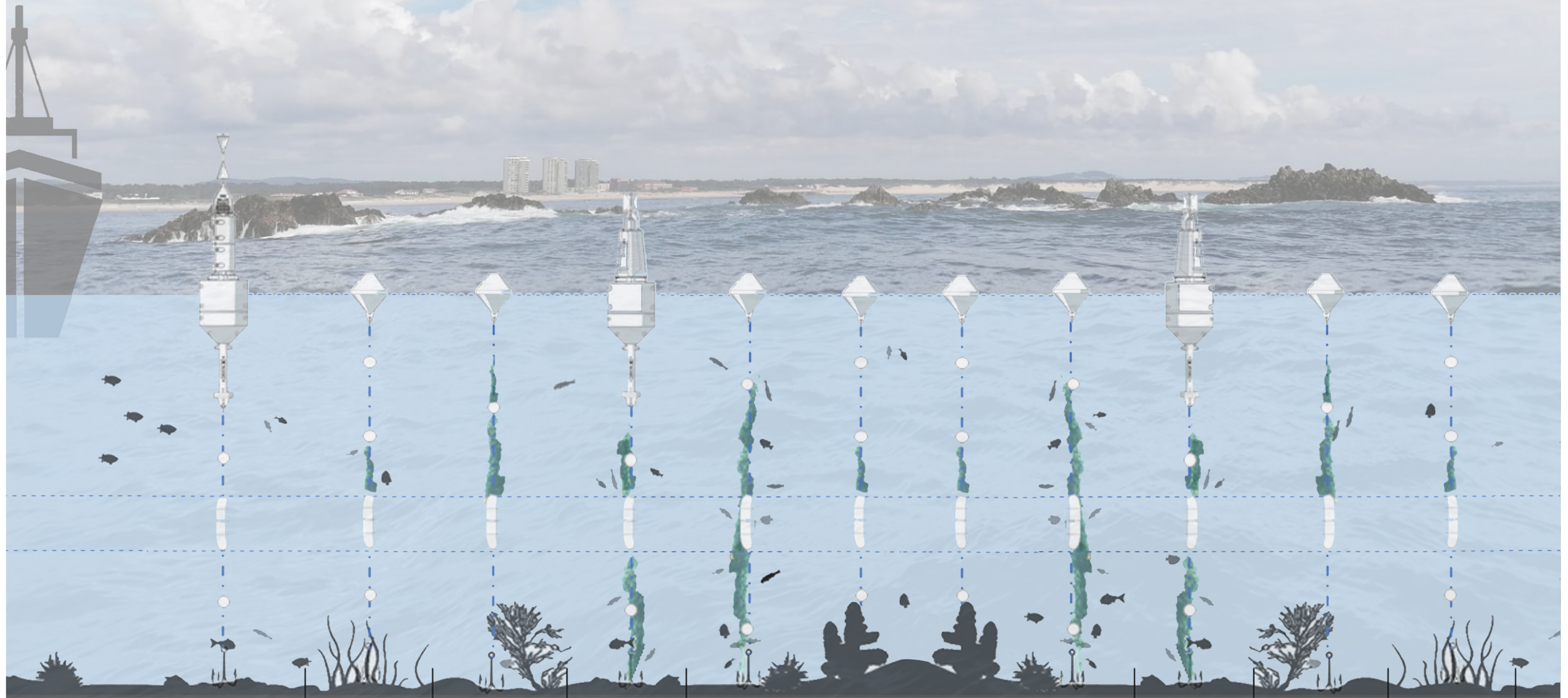


SEA TRAILS

PRESERVE_PROTECT_POTENTIALIZE_



Country / City Portugal, Guimarães
University / School University of Minho, School of Architecture
Academic year 2019/2020 | 4th year
Title of the project Sea Trails
Authors André Maia, Rui Correia and Vítor Miquelino

TECHNICAL DOSSIER

Title of the project	Sea Trails
Authors	André Maia, Rui Correia and Vítor Miquelino
Title of the course	Atelier 2A: Territory
Academic year	2019/2020 4th year
Teaching Staff	Marta Labastida Juan, Marisa Carvalho Fernandes
Department/Section/Program of belonging	Mestrado Integrado Arquitectura, Escola Arquitectura Universidade do Minho (MIARQ-EAUM)
University/School	University of Minho, School of Architecture



Written statement, short description of the project in English, no more than 250 words

The territory of Esposende lives on the sea, all the terrestrial potential was born by the influence of the sea but the population has the sea as "the unknown". After discovering the existence of natural park in this place, the intention went trying to understand all the constituent elements of this park and to make a balance between two points, sea / land, of the park, at an informative and perceptual level.

Why did this level of information not exist in the maritime part as it exists in the land part?

Our strategy focuses on the Natural Park of the North Coast, an icon of the city of Esposende, in order to change the way of looking at the territory, raising the consciousness of the population that appropriates it and working on the same or greater detail of the strong points of land. Our strategy is divided into three interventions. First, the introduction of a "maritime infrastructure" to preserve and protect the coastline / species / biodiversity. Then, the reuse of Forte S. João Baptista with the inclusion of a Research Center that intends to study/catalog the maritime territory and becomes the starting point and the articulator of the interfaces. Finally, similarly to existing land trails, in the same way, introduce sea trails that praise the interest points of the "Esposende Sea".

That said, focusing on the Potentialize-Preserve-Protect ideals, we developed our work from three public interest areas due to the predominant characteristics that identify the place itself.

For further information
Máster d'Arquitectura del Paisatge -DUOT - UPC

T: + 34 93 401 64 11 / +34 93 552 0842
Contact via email at: biennal.paisatge@upc.edu

Máster d'Arquitectura del Paisatge -DUOT - UPC
ETSAB- Escola Tècnica Superior
d'Arquitectura de Barcelona
Avenida Diagonal, 649 piso 5
08028 Barcelona-Spain



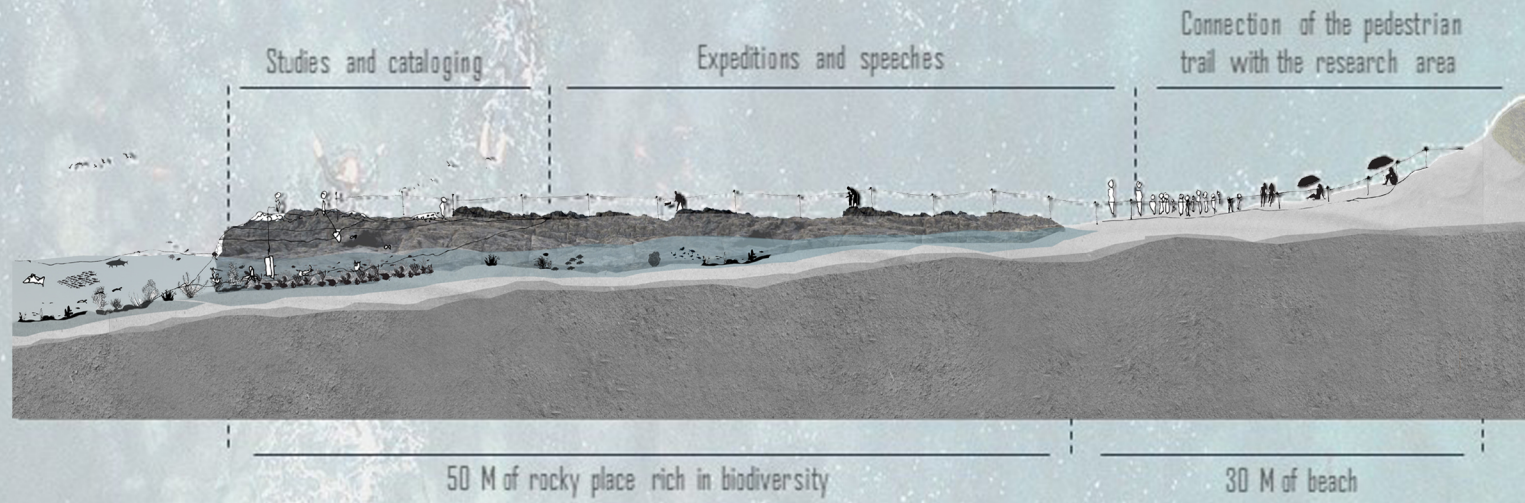
CLIMATE CHANGE AGAIN

11th International Biennial Landscape Barcelona

Barcelona September 2020
SCHOOL PRIZE



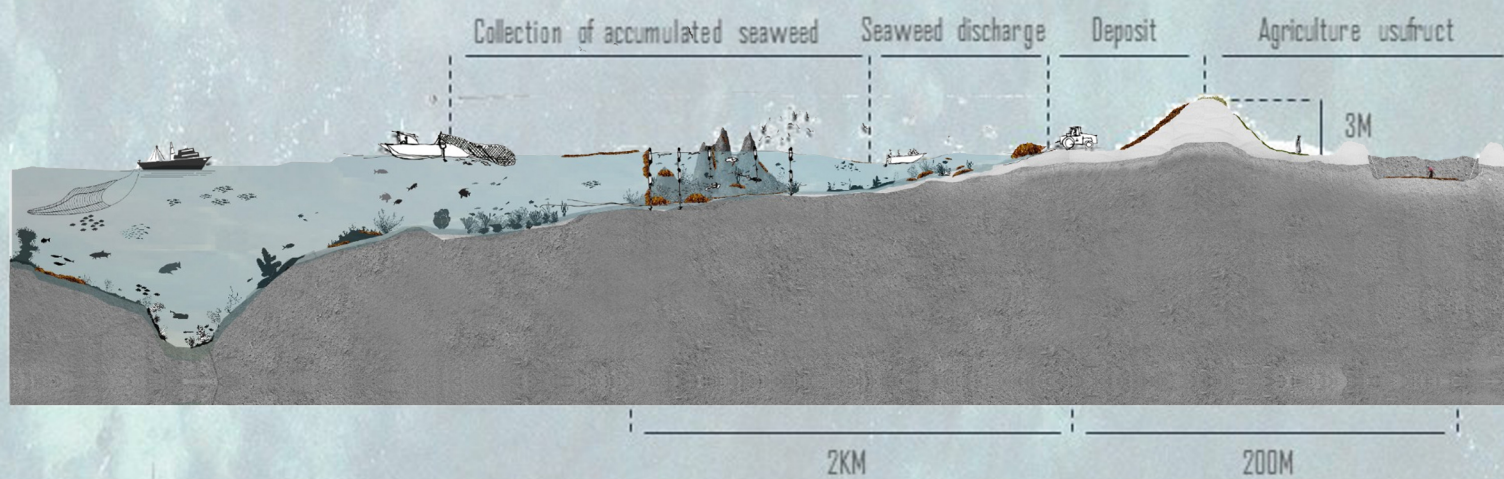
1. PRESERVE S.Bartolomeu do Mar, Esposende, Portugal



2. PROTECT Cávado River Mouth, Esposende, Portugal

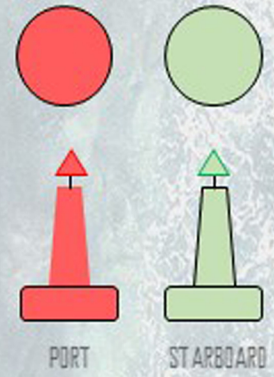
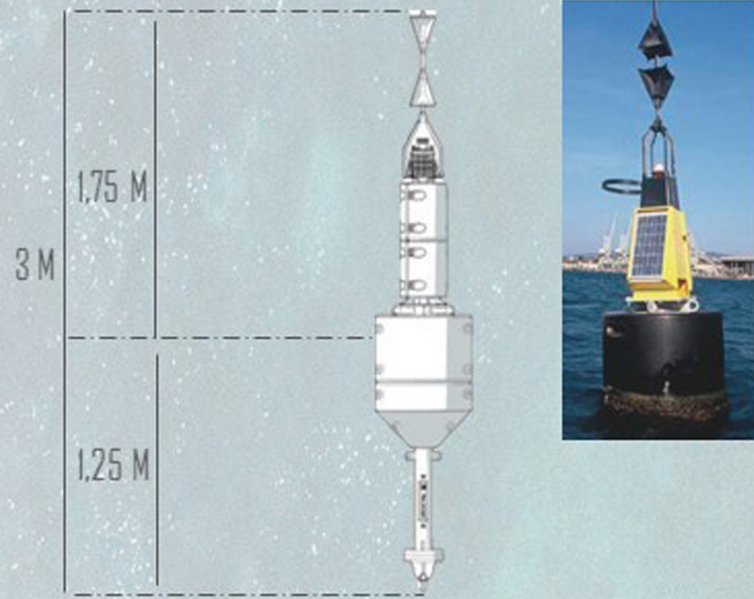
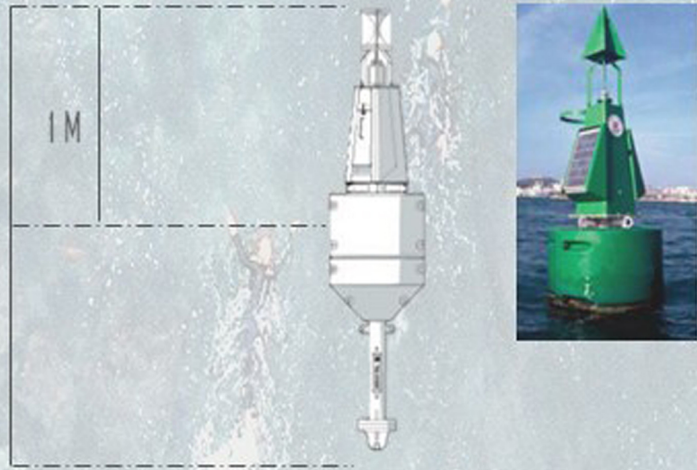


3. POTENCIALIZE Ramalha Beach, Esposende, Portugal

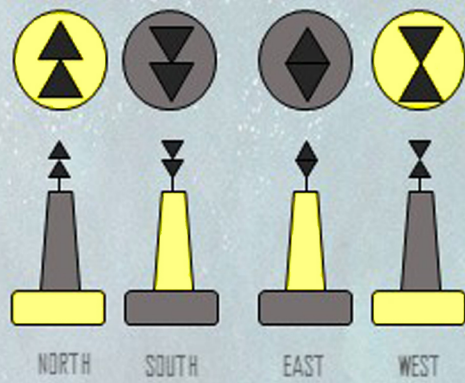


SEA TRAILS STRUCTURE

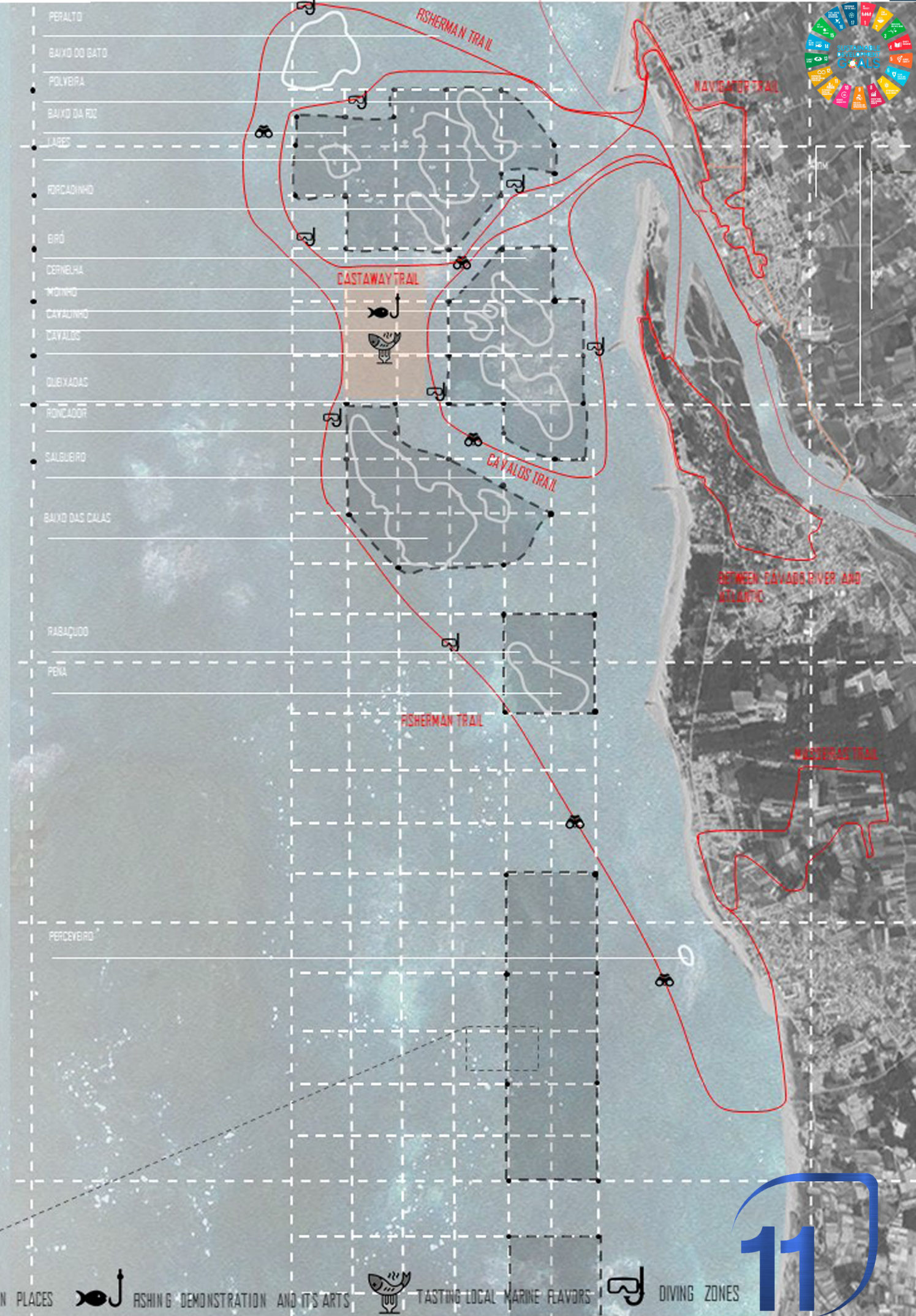
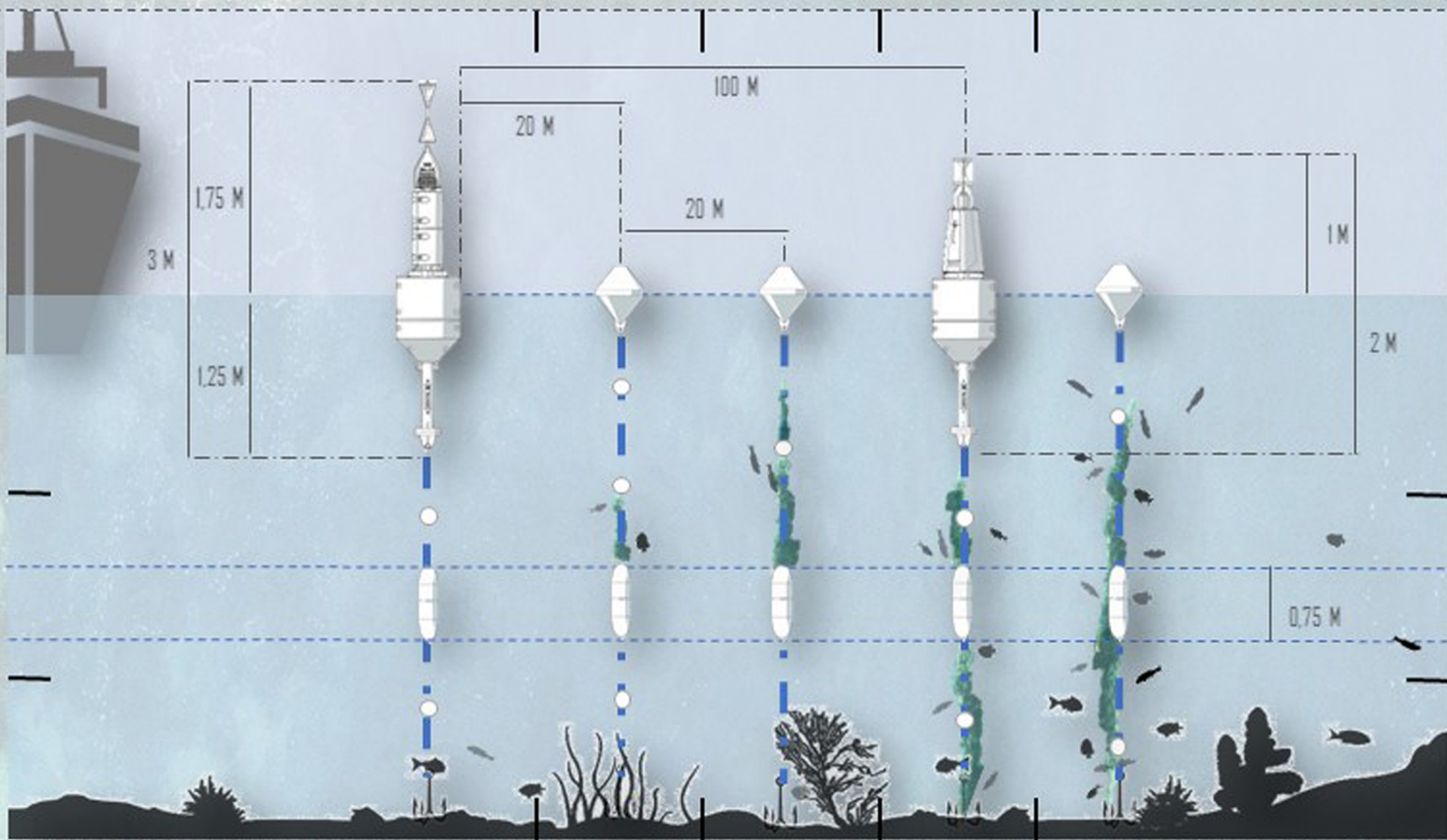
PRESERVE_PROTECT_POTENTIALIZE



SIGNALING STRUCTURE-SIDE MARKS - Marks indicating the board to be taken by a boat when entering on port, dock, etc.

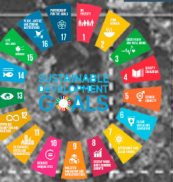


PERIMETER STRUCTURE-CARDINAL MARKS - Marks that indicate where the deepest waters are. Delimit a non-navigable zone.

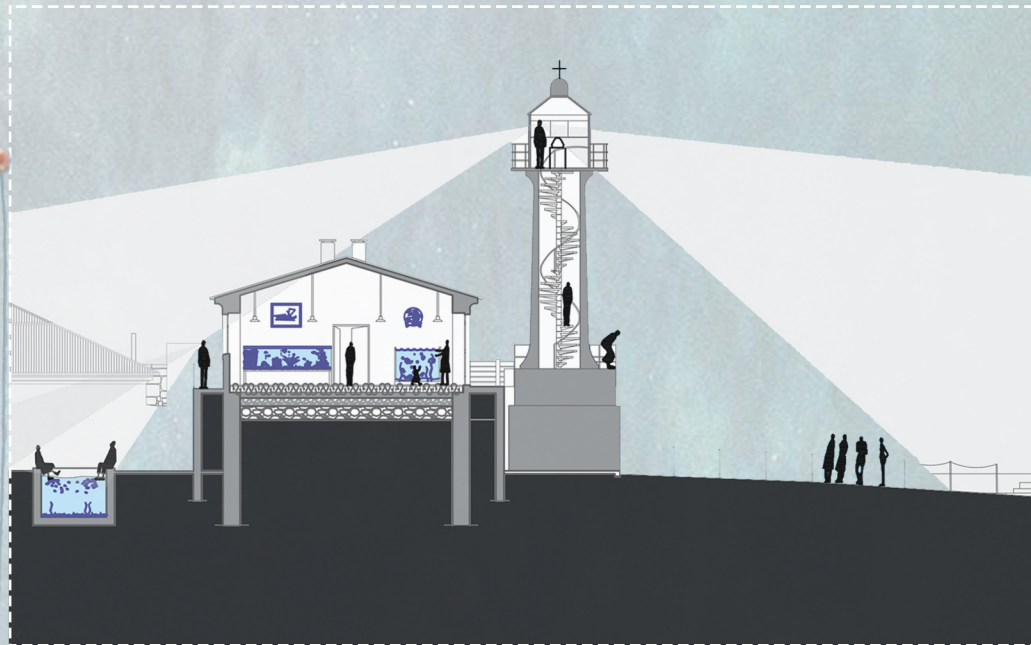


SEA TRAILS INTERFACE ARTICULATOR

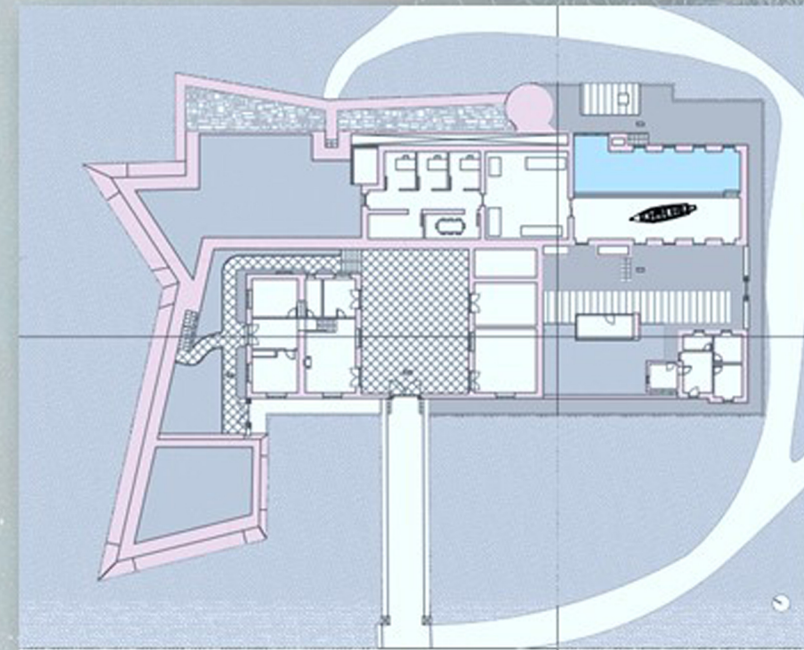
PRESERVE_PROTECT_POTENTIALIZE_



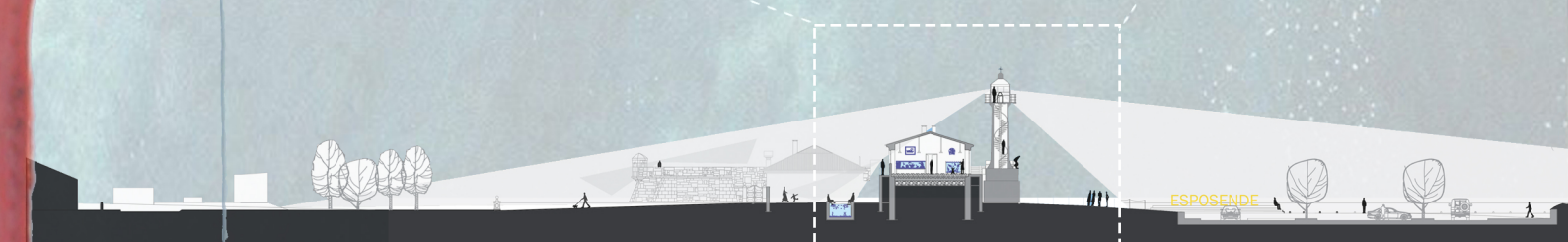
FORTE SÃO JOÃO BAPTISTA



SECTION I- DAILY ACTIVITIES



FLOORPLAN FORTE S.LOÃO BAPTISTA



ESPOSENDE