



Country / City

University / School

Academic year

Title of the project

Authors

Canada / Calgary

University of Calgary / School of Architecture, Planning and Landscape

2018-2019

Transitioning. Grand Trunk Pedestrian Bridge

Christina Peace



TECHNICAL DOSSIER

Title of the project **Transitioning.** Grand Trunk Pedestrian Bridge
Authors Christina Peace
Title of the course Landscape Architecture Studio II
Academic year 2018-2019
Teaching Staff Enrica Dall'Ara
Department/Section/Program of belonging Master in Landscape Architecture
University/School University of Calgary / School of Architecture, Planning and Landscape



Written statement, short description of the project in English, no more than 250 words

In Calgary, neighbourhoods Inglewood and Ramsay are known for their large parks, the riverfront, and eclectic commercial street of 9th Avenue. The Canadian Pacific Railway (CP) and historical Grand Trunk Pacific Railway (GTPR) also played a significant role in the conception of these neighbourhoods. The GTPR was decommissioned in the 1960s after it merged with CP. Now only berms and residual open spaces are left over from this historical railway.

After the introduction of the automobile on the global market, Calgary underwent further redevelopment with the emergence of massive highways. Thus, fragmentation continued. Seemingly prioritizing the connection of the railway and vehicular traffic became the focus, leaving pedestrians and cyclists with minimal connections. Since then, parkspace has been severed and pinched.

The Grand Trunk Pedestrian Bridge was conceived to suture a connection between the large park systems, due to the major highway Blackfoot Trail. Remembering the historical railway presence, the pedestrian bridge follows the traces left over from the Grand Trunk Pacific Railway leading its users to either side of the highway. With a variety of wildlife that also use these green spaces, including hares, deer, etc. the bridge also accommodates for the movement of wildlife to create an environment where both people and wildlife can co-habitat generating new linkages and potential.

For further information
Máster d'Arquitectura del Paisatge -DUOT - UPC

T: + 34 93 401 64 11 / +34 93 552 0842
Contact via email at: biennal.paisatge@upc.edu

Máster d'Arquitectura del Paisatge -DUOT - UPC
ETSAB- Escola Tècnica Superior
d'Arquitectura de Barcelona
Avenida Diagonal, 649 piso 5
08028 Barcelona-Spain



CLIMATE CHANGE AGAIN

11th International Biennial Landscape Barcelona

Barcelona September 2020
SCHOOL PRIZE



1 Analysis

Calgary's Inglewood and Ramsay



Flooding chance
 1% chance
 10% chance

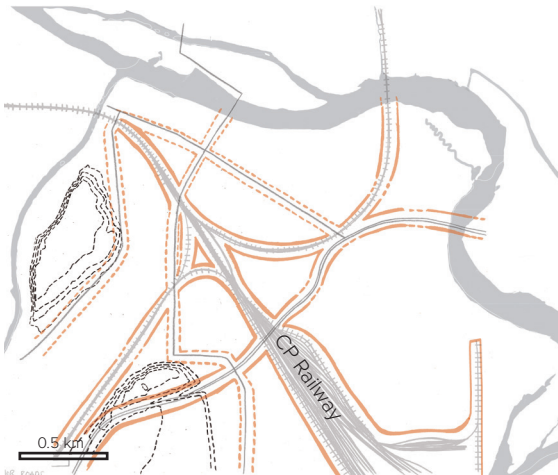
At Risk of Flood
 Heritage Buildings
 Buildings
 9th Ave commercial spine

Barriers
 Major Roadways
 CP Railway

Connective pathway
 Regional pathway

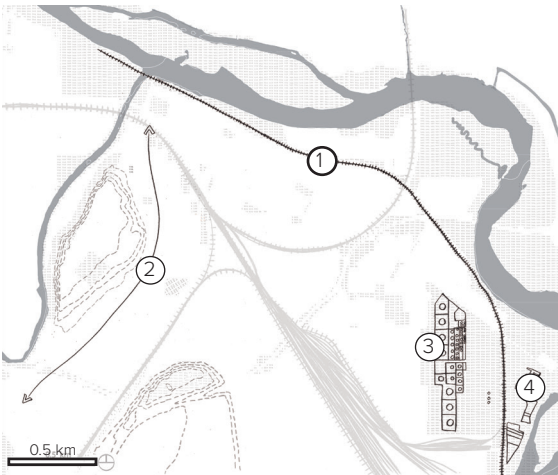
Future Light-Transit Rail
 Green Line
 Stops

Major roadways and railways have fragmented the area.



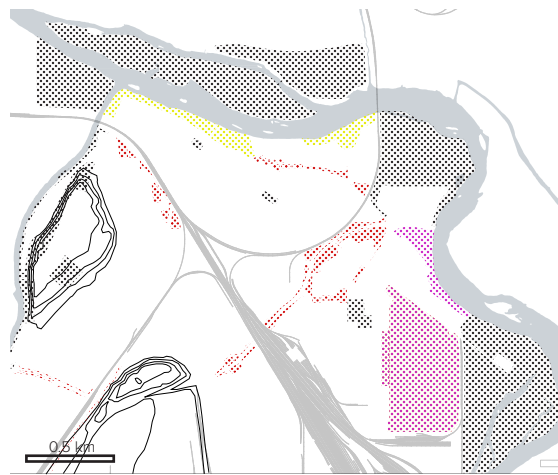
Impermeable Permeable

Historical traces are left uncelebrated.



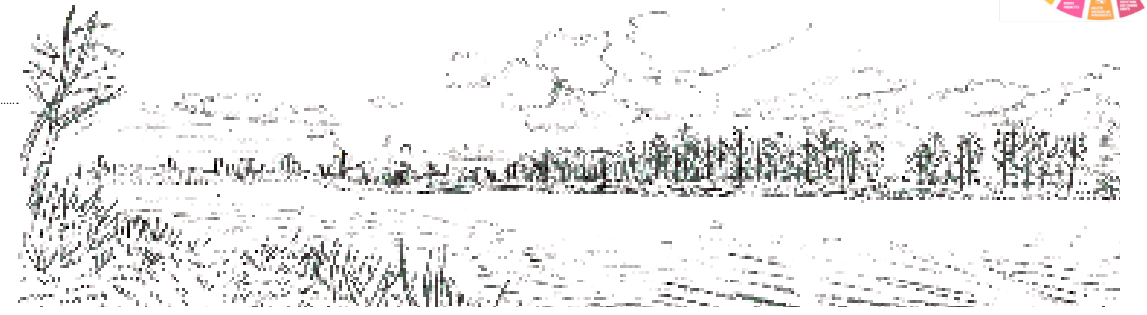
① Grand Trunk Pacific Railway
 ② Old Cart Trail
 ③ Oil Refinery
 ④ Chinese Market Gardens

Open space are pinched and severed



Programmed Residual Unprogrammed Future park

Riverfront spaces in Pearce Estate Park



Deer tracks near Pearce Estate Park



Problematic site
 Blackfoot Trail intersection severs park system for pedestrians + wildlife



Inglewood Wildlands left for native wildlife + vegetation



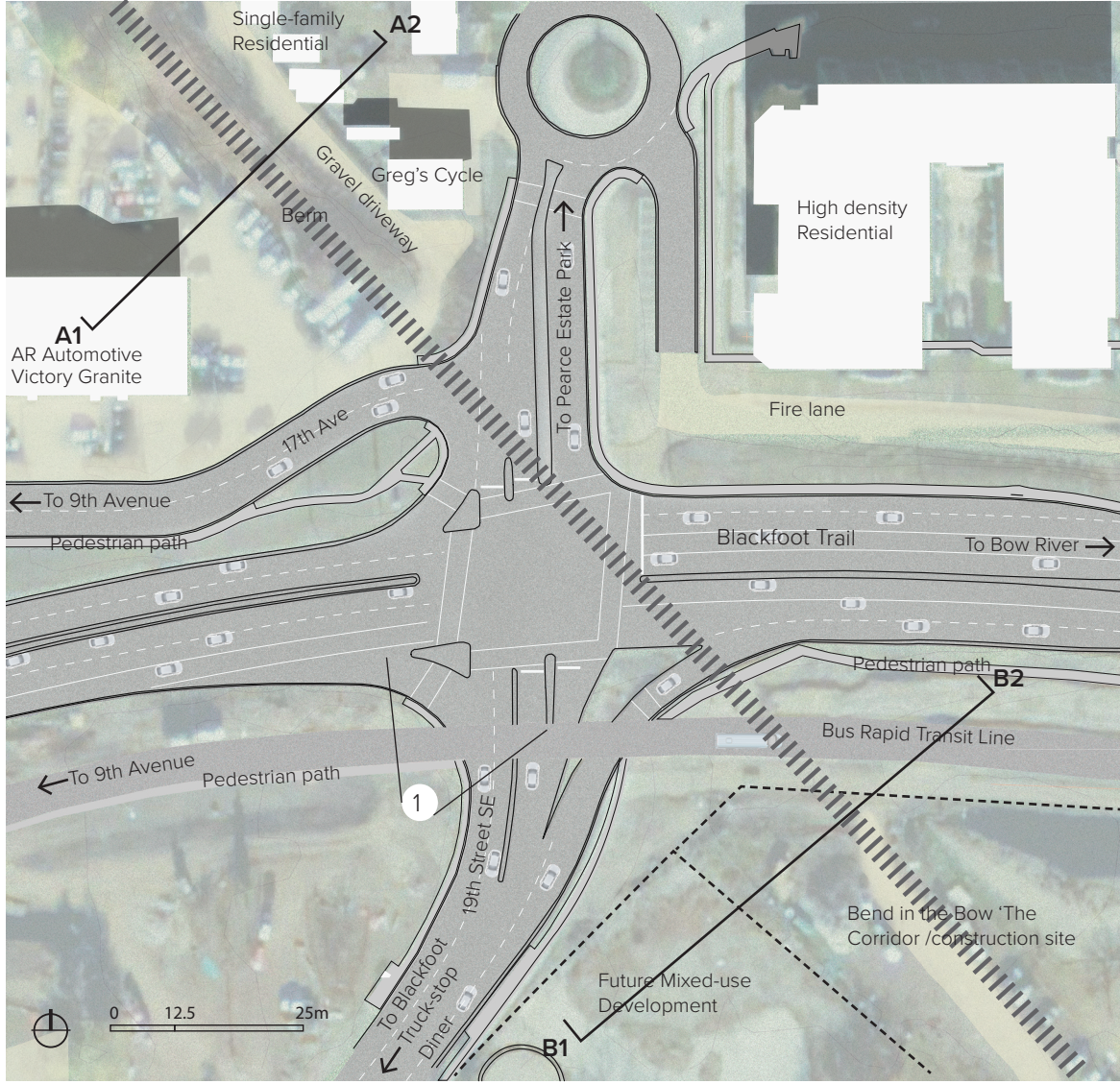
Inglewood Bird Sanctuary is filled with history + native bird species



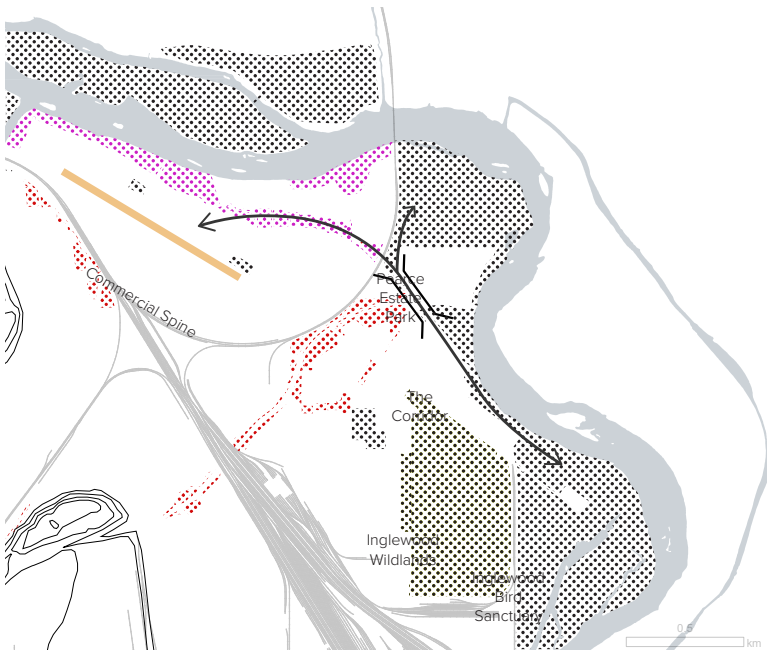


2 Current Conditions

Blackfoot Trail Intersection



Historical Grand Trunk Pacific Railway



Strategy

Reconnect park system over major intersection with a land bridge suitable for pedestrians as well as wildlife

↔ Reconnection

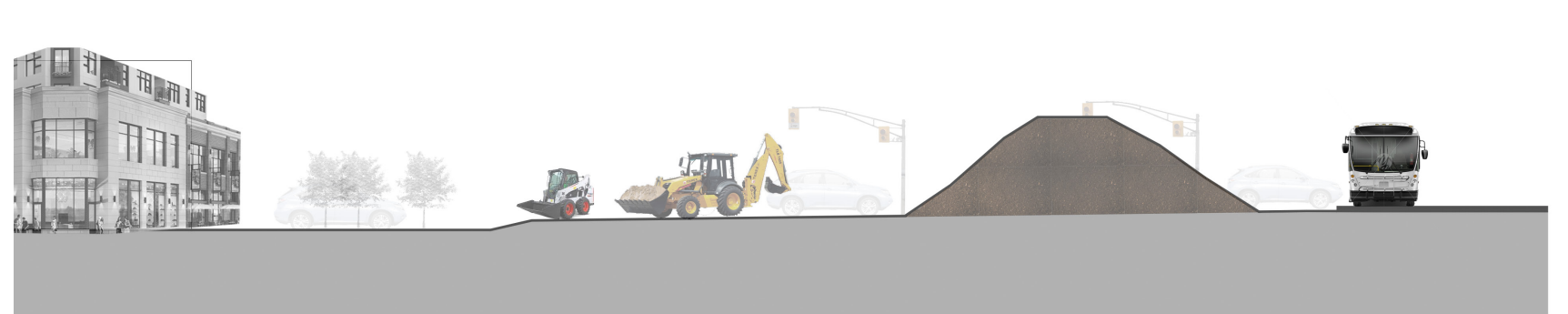
- Unprogrammed
- Future park
- Programmed
- Residual

Sections

Historical railway berm + construction site fill perfect for pedestrian bridge



Section AA1: Relationship between residual berm and its surroundings



Section BB1: Relationship between construction site and mixed-use future development

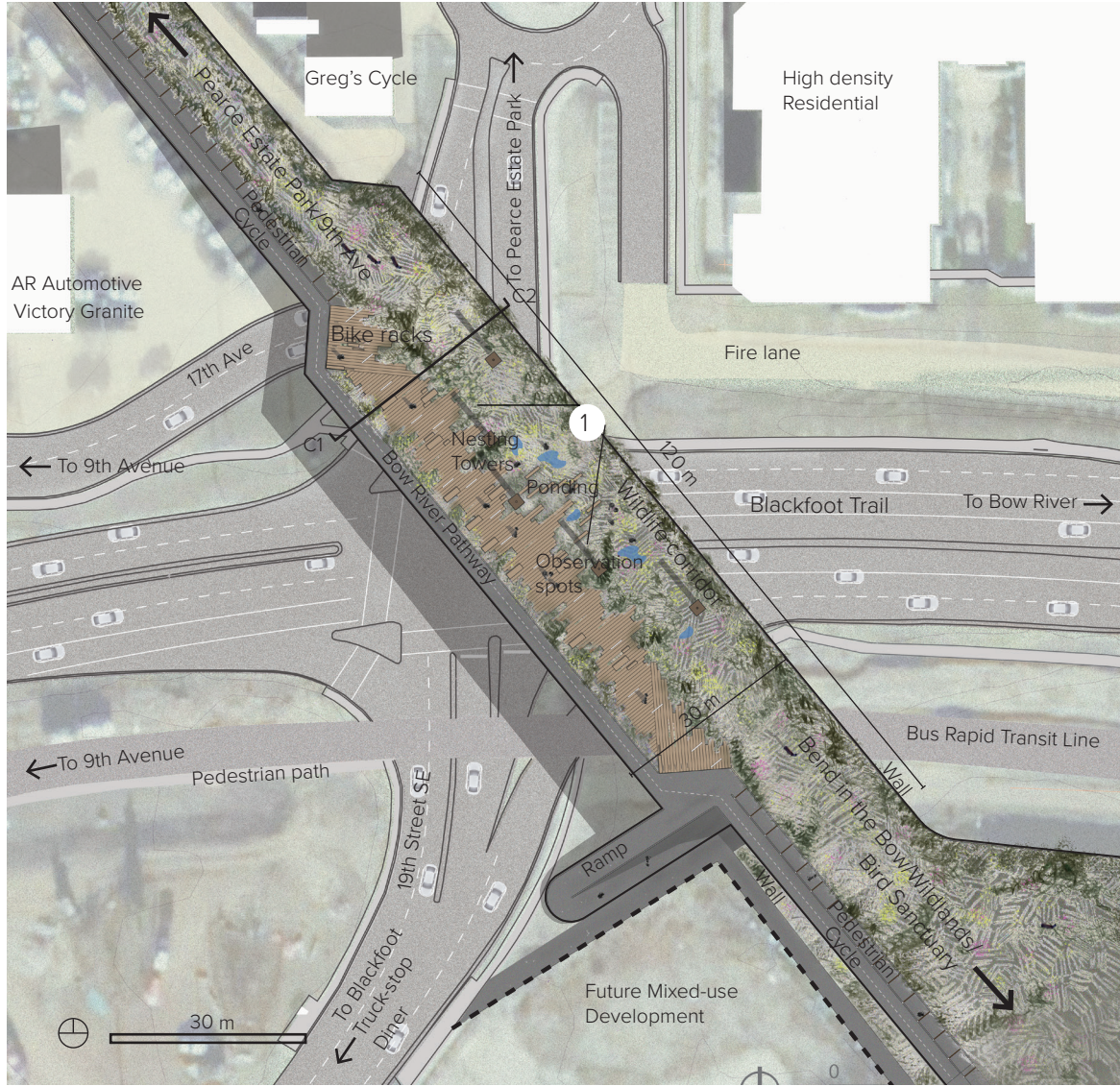
Strategic location

This site was chosen due to its precarious location that severs two large park spaces leaving behind a dangerous intersection. By reconnecting the park spaces with a bridge, it would in turn celebrate its historical relevance.





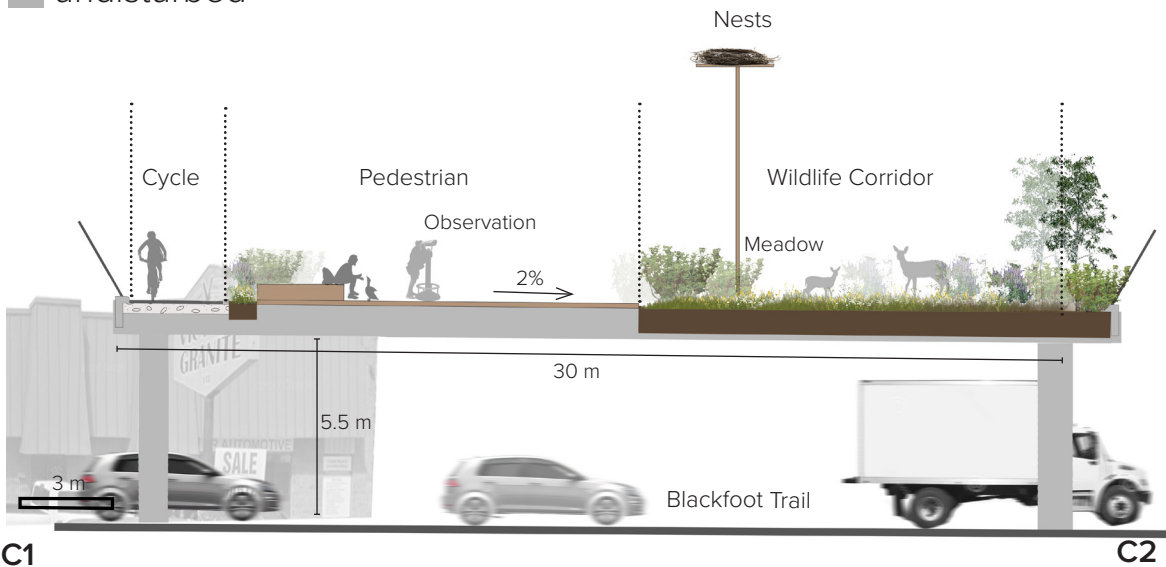
3 Design Development Grand Trunk Pedestrian Bridge



Conceptual Views Visioning foraging + observation activities on the pedestrian bridge



Section Heavy traffic passes underneath while pedestrians + wildlife cross undisturbed



Visual connection to Calgary's downtown and the Rocky Mountains



C1

C2

