

- LEGEND**
1. Main building
 2. Office building
 3. Studio
 4. Workshop (carpentry, mine, sculpture, painting)
 5. Parking film studios (props)
 6. Restaurant, cafe
 7. Film sets
 8. Guard
 9. Visitors' Parking
 10. Crew's Parking
 11. GARD Parking
 12. Wagon tour
 13. Observatory
 14. Future expansion space
 15. Bus stop
 16. Bicycle rase
 17. Bicycle parking
 18. Substation
 19. Shallow lake

- LEGEND MATERIALS**
- Asphalt
 - Grass
 - Green block
 - Black
 - Packed soil
 - Shallow lake
 - Bicycle rase
 - Railroad
 - Evergreen tree
 - Deciduous tree



Country / City GREECE / THESSALONIKI
 University / School ARISTOTLE UNIVERSITY OF THESSALONIKI / SCHOOL OF ARCHITECTURE
 Academic year 2019-2020
 Title of the project THE ARCHITECTURE OF POWER THE CONVERSION OF A FORMER POWER PLANT INTO FILM STUDIOS
 Authors VASILIKI KASVIKI

TECHNICAL DOSSIER

Title of the project	THE ARCHITECTURE OF POWER_ THE CONVERSION OF A FORMER POWER PLANT NTO FILM STUDIOS
Authors	VASILIKI KASVIKI
Title of the course	DIPLOMA PROJECT
Academic year	2019-2020
Teaching Staff	VENETIA TSAKALIDOU, Assistant Professor, School of Architecture AUTH
Department/Section/Program of belonging	DEPARTMENT OF ARCHITECTURE / FACULTY OF ENGINEERING
University/School	ARISTOTLE UNIVERSITY OF THESSALONIKI



The diploma design thesis deals with the conversion and re-design of a former power station of PPC in the lignite basin of Ptolemaida into world-class film studios, unique in Greece and worldwide, because of the extraordinary landscape of lignite mines and facilities to be offered for film productions.

The Ptolemaï's Thermal Power Station created in 1954 was the first station of electricity nationwide. The operation was discontinued in 2014, after a fire, leaving behind an industrial ruin, and at the same time an industrial monument to the heritage of Greece. The importance, footprint, features and typology of this building and its landscape were the inspiration for the conversion of a power factory into a film "factory", assigning new meaning to it, reinforcing historical memory, contributing to the restoration of the environment and adding this complex to the architectural map of Greece.

The proposal maintains the concept of a dipole and is characterized by the creation of conceptual, programmatic and design contrasts, wishing to reverse the situation of abandonment. Thus, in a purely industrial and orthocanonical environment, nature is introduced with a new script that draws its inspiration and combines the linearity of the landscape with strong shapes which the station gradually added to it.

The land and the building receive the new use, while functioning as exhibits of themselves. Nature is introduced in a tight grid and industrial environment, creating new landscapes both inside and outside of the building. Along with the addition, a winter garden on the rooftop, this unique combination of natural and built elements transforms the power station into a new landmark of the surrounding scape.

For further information
Máster d'Arquitectura del Paisatge -DUOT - UPC

T: + 34 93 401 64 11 / +34 93 552 0842
Contact via email at: biennal.paisatge@upc.edu

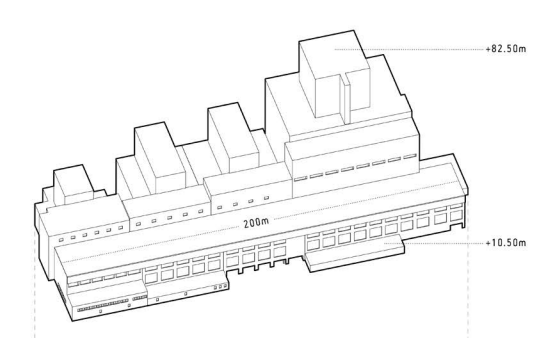
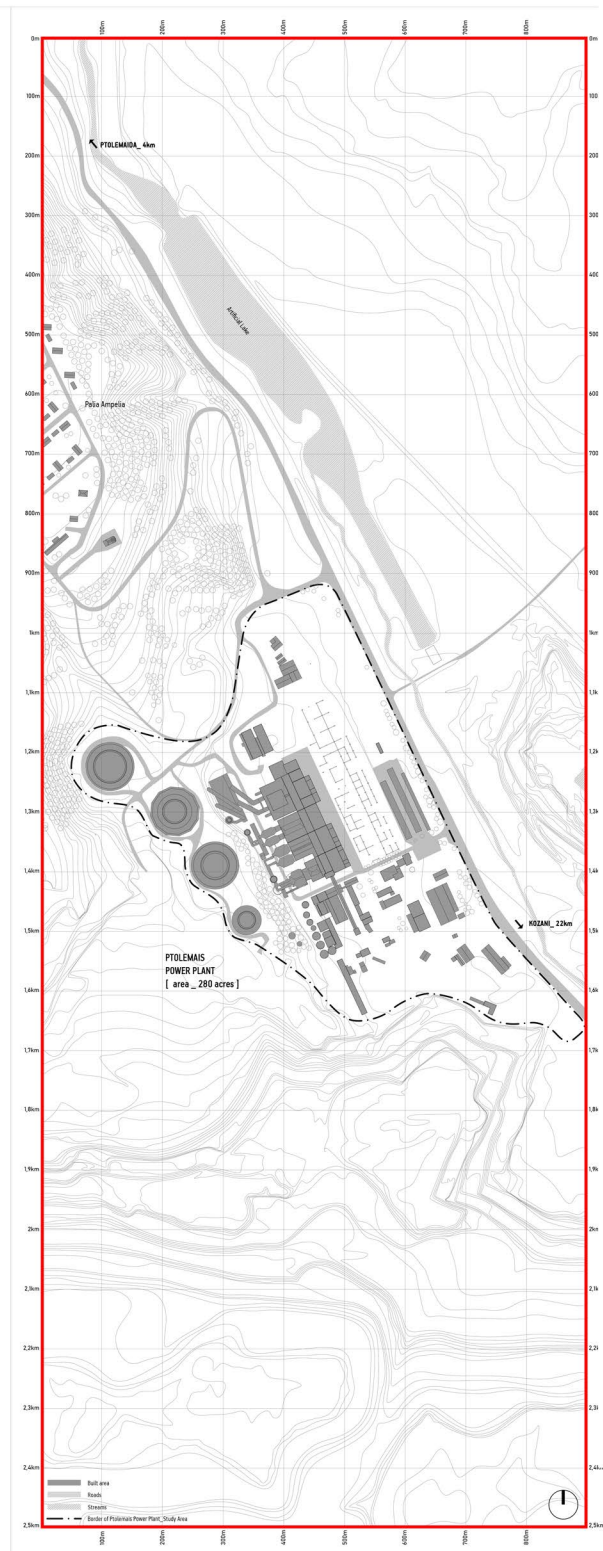
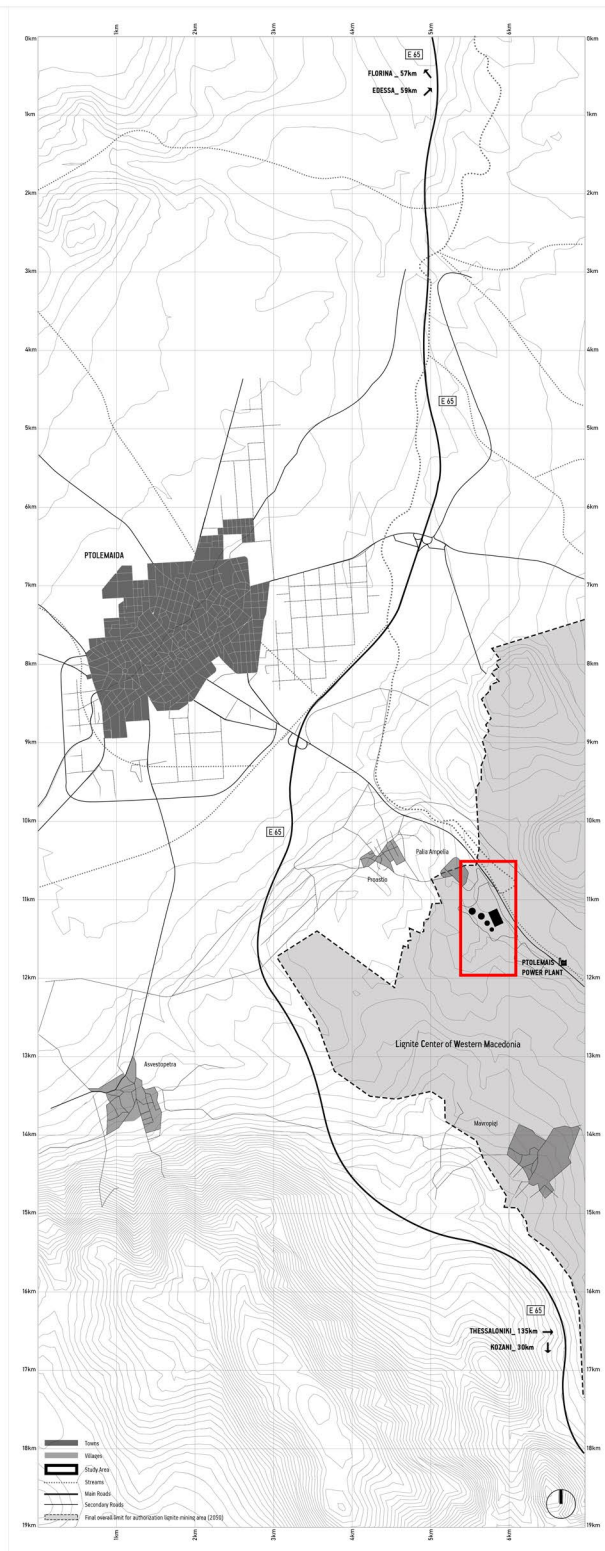
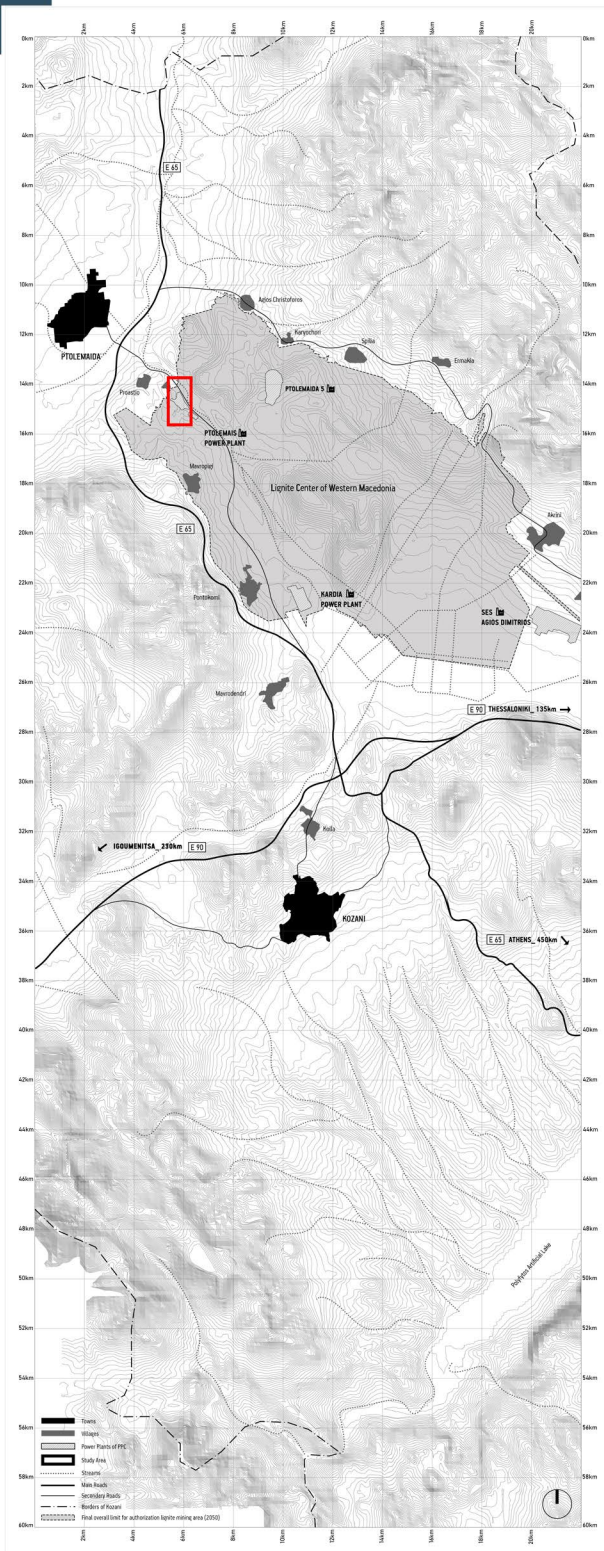
Máster d'Arquitectura del Paisatge -DUOT - UPC
ETSAB- Escola Tècnica Superior
d'Arquitectura de Barcelona
Avenida Diagonal, 649 piso 5
08028 Barcelona-Spain



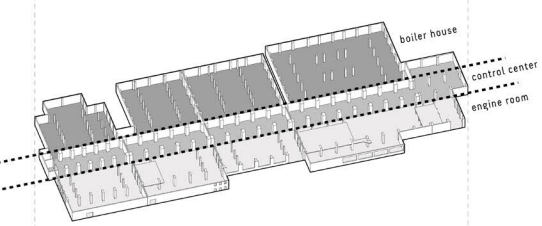
CLIMATE CHANGE AGAIN

11th International Biennial Landscape Barcelona

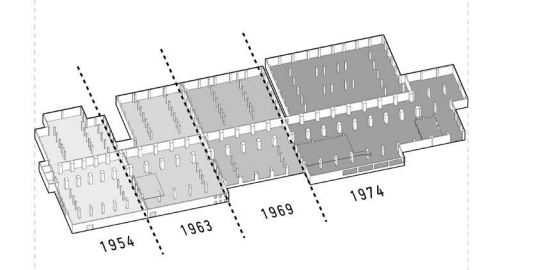
Barcelona September 2020
SCHOOL PRIZE



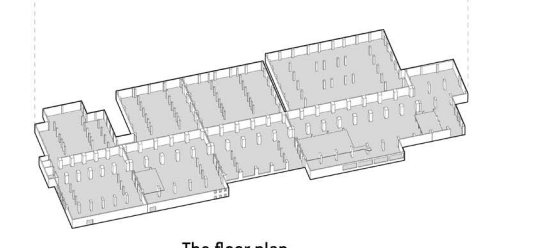
The shell and the multiple levels



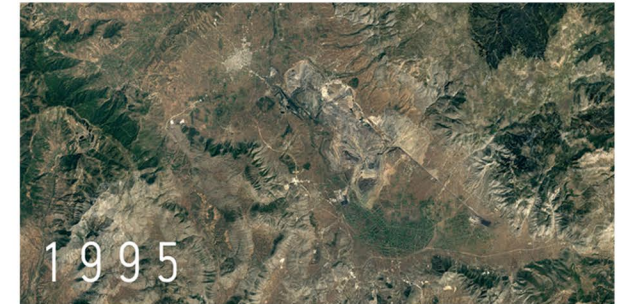
The trimeric structure



The 4 phases of creation



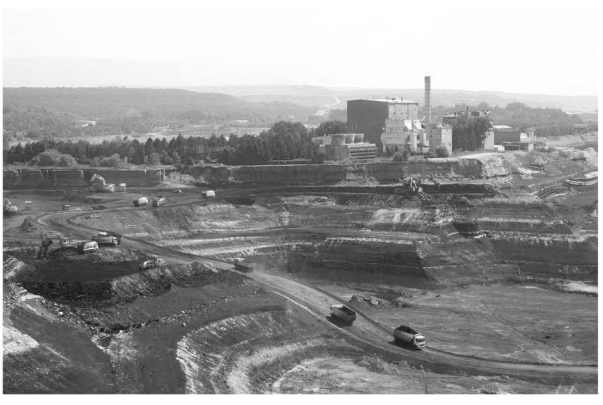
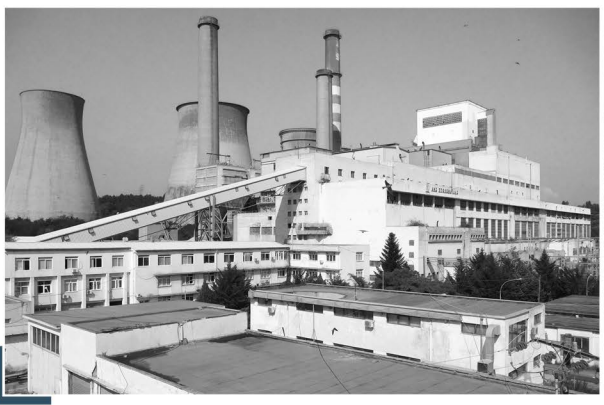
The floor plan

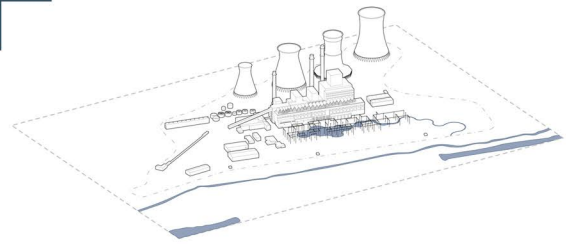


The location site and its surrounding area

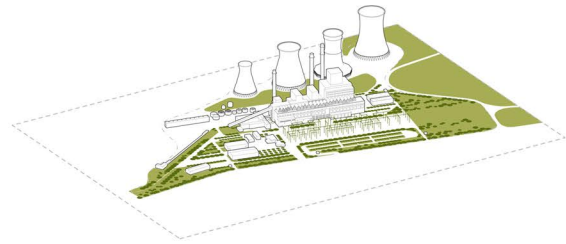
Basic characteristics of the structure of the Ptolemais Thermal Power Station

Transformation of the landscape since 1990

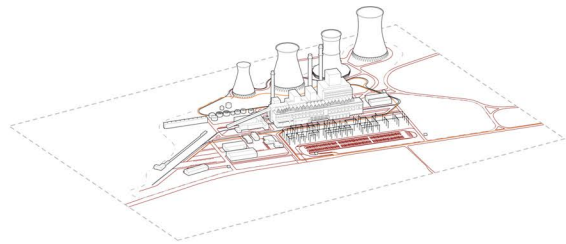




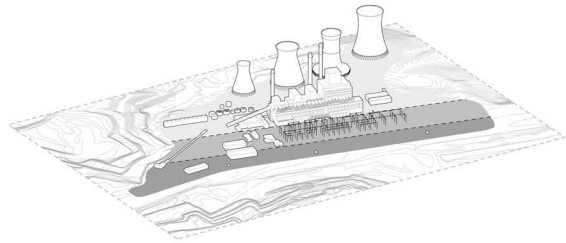
The introduction of the water element and the new script



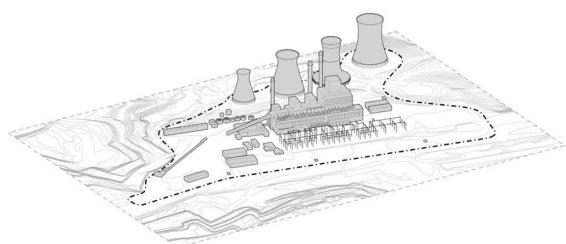
Extending and inserting the green - the fragment -



The proposed network of new use



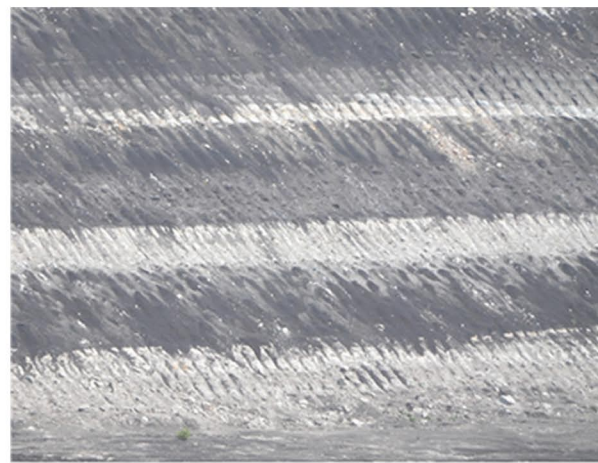
The three sections of the landscape



Existing buildings and facilities

Principles of landscape design

Photographs of the model



Linearity of the landscape

+



x

4



x

3



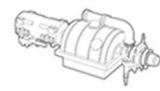
x

8



x

2



x

4

=



Curvilinear elements of the site combined in a new script



Orthophotography of the area

Selected landscape elements_initial idea

280 acres
Area

24.152 m²
Covering area

78.776 m²
Total built area

14.893 m²
Covering building area

67.160 m²
Total building area

35-40%
stages

12-20%
facilities

10-15%
offices

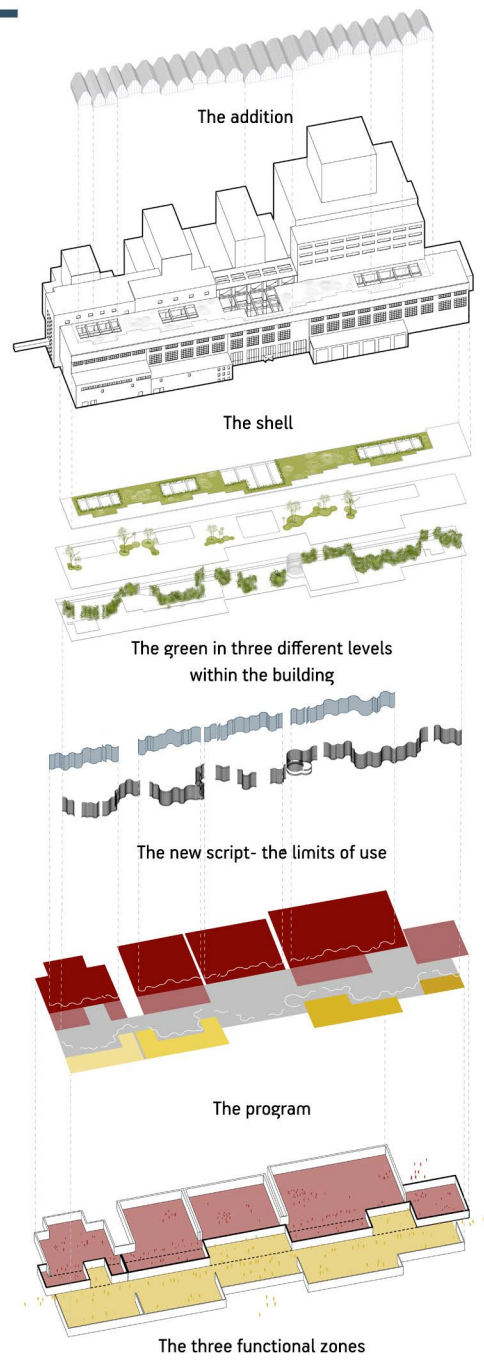
9-15%
workshops

10-30%
storage

Data of the site

Programmatic data





Design principles based on the basic characteristics of the structure



The addition on the roof proposes a winter garden with an obstructed view to the imposing landscape.



A new landscape is created inside the Turbine Hall