

Subtraction



Addition



Itinerary



Cungiàs



Fanghi Rossi



Country / City	Sardinia, Italy
University / School	University of Cagliari. Faculty of Engineering and Architecture
Academic year	2018-2019
Title of the project	Forma Terrae: Topographic itineraries of Mining heritage
Authors	Andrea Lai, Federico Serventi (students). Giorgio Peghin, Antonio Angelillo (teachers). Roberta D'Angelo, Anna Corda, Andrea Scalas (tutors).

TECHNICAL DOSSIER

Title of the project	Forma Terrae: Topographic itineraries of Mining heritage
Authors	Andrea Lai, Federico Serventi
Title of the course	Mining Landscapes
Academic year	2018-2019
Teaching Staff	G. Peghin, A. Angelillo (teachers), R. D'Angelo, A. Corda, A. Scalas (tutors)
Department/Section/Program of belonging	DICAAR_University of Cagliari
University/School	University of Cagliari_Faculty of Engineering and Architecture



Written statement, short description of the project in English, no more than 250 words

The project site, which is the area of Monteponi's village, represents one of the greatest legacy of the most prosperous age of mining activity in Sulcis, between 1850 and 1980. The mining activity provoked a jarring contrast between the environmental context and the industrial artifact which characterize it. The aim of the project is to give value and convey the magnitude of these topographic modifications that became symbol of the territorial identity through an itinerary which is both cultural and sensorial. The topographic modifications previously mentioned can be categorized in two typologies: the material subtraction, that is the excavation within which the surface mining was practiced, and the material addition, that is production scraps' deposit. These categories combine the multiplicity of Sulcis territory's mining sites; this allows to design a circuitual system which gathers together all of these sites and which preserves their specificity and memory. In Monteponi's village are present both the subtraction, which is Cungias cave, which is the greatest open-air cave in Sardinia, and the addition, "I Fanghi Rossi", a product scraps' stratification 3 millions cubic meter wide. The design approach was to work with negatives: in the addition we design a subtraction, and vice versa. Both interventions are associated with the topic of the wall as a living place and as a place of paths characterized by cultural events and by the emotional charge of architecture, which allows the visitor to measure himself with the monumentality of these artifacts.

For further information
Máster d'Arquitectura del Paisatge -DUOT - UPC

T: + 34 93 401 64 11 / +34 93 552 0842
Contact via email at: biennal.paisatge@upc.edu

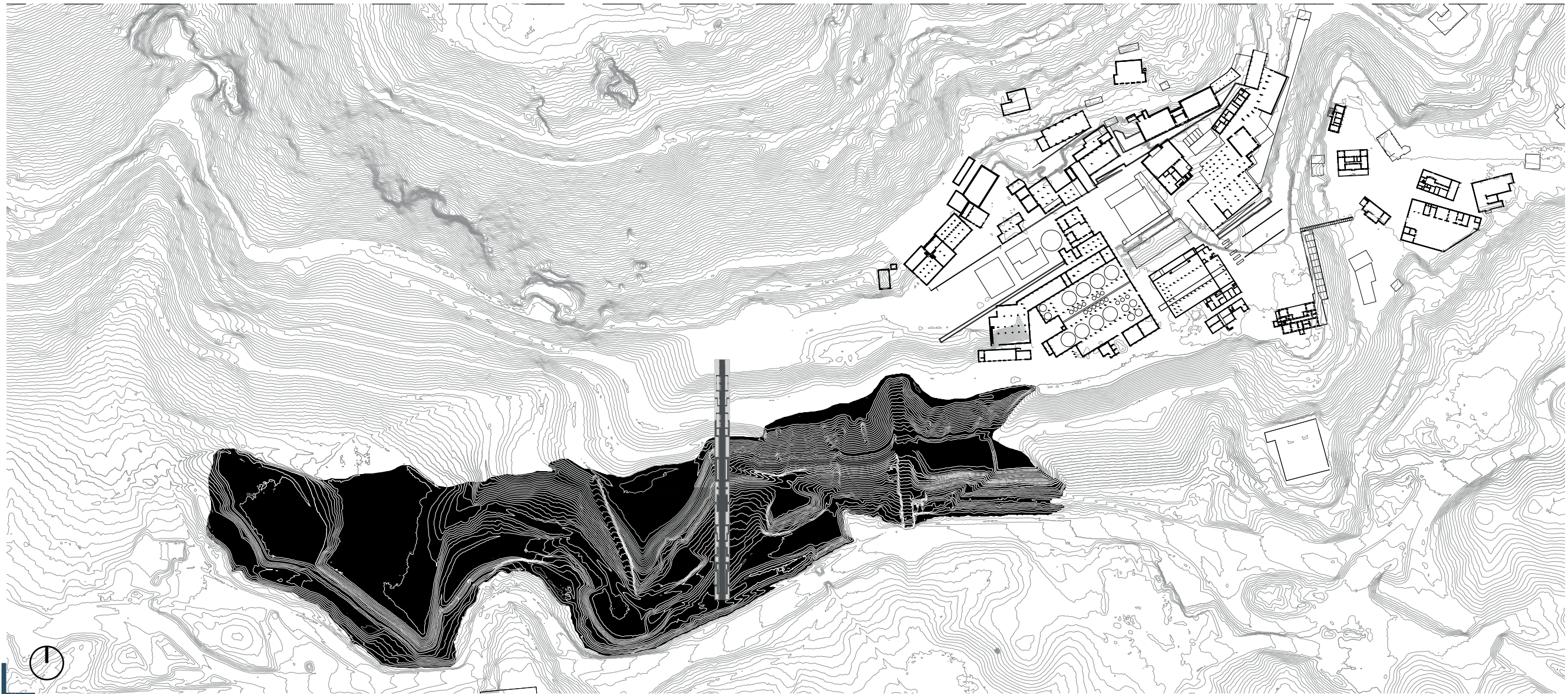
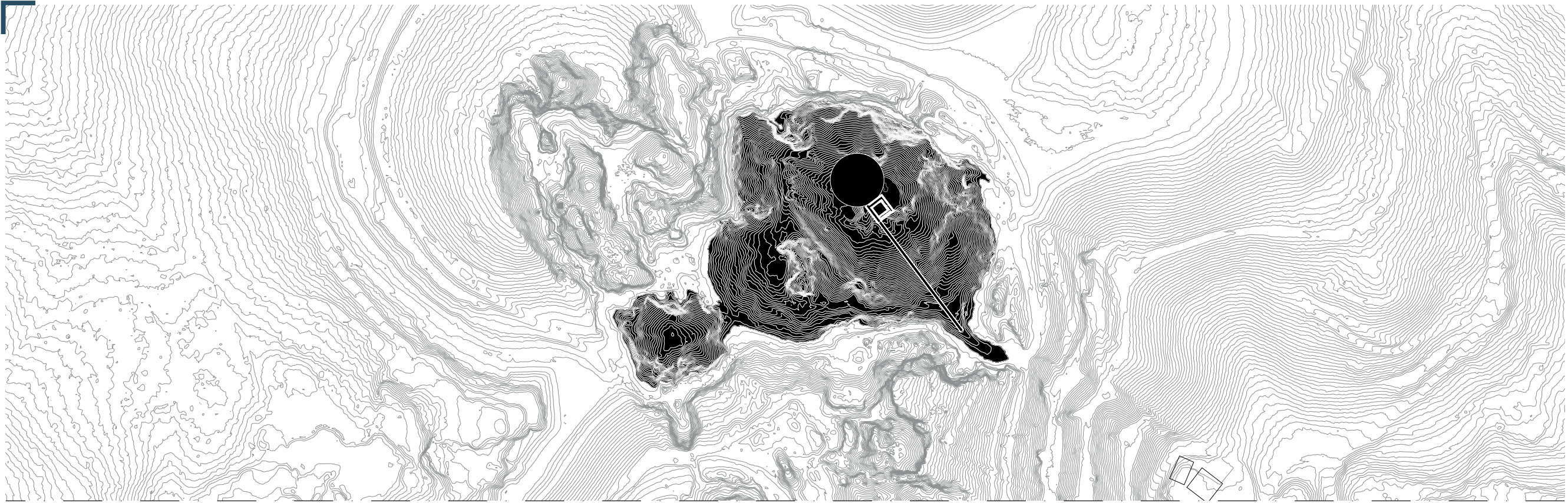
Máster d'Arquitectura del Paisatge -DUOT - UPC
ETSAB- Escola Tècnica Superior
d'Arquitectura de Barcelona
Avenida Diagonal, 649 piso 5
08028 Barcelona-S pain

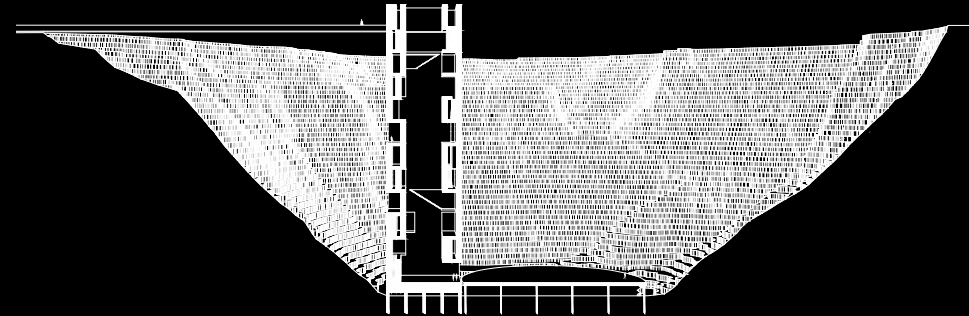
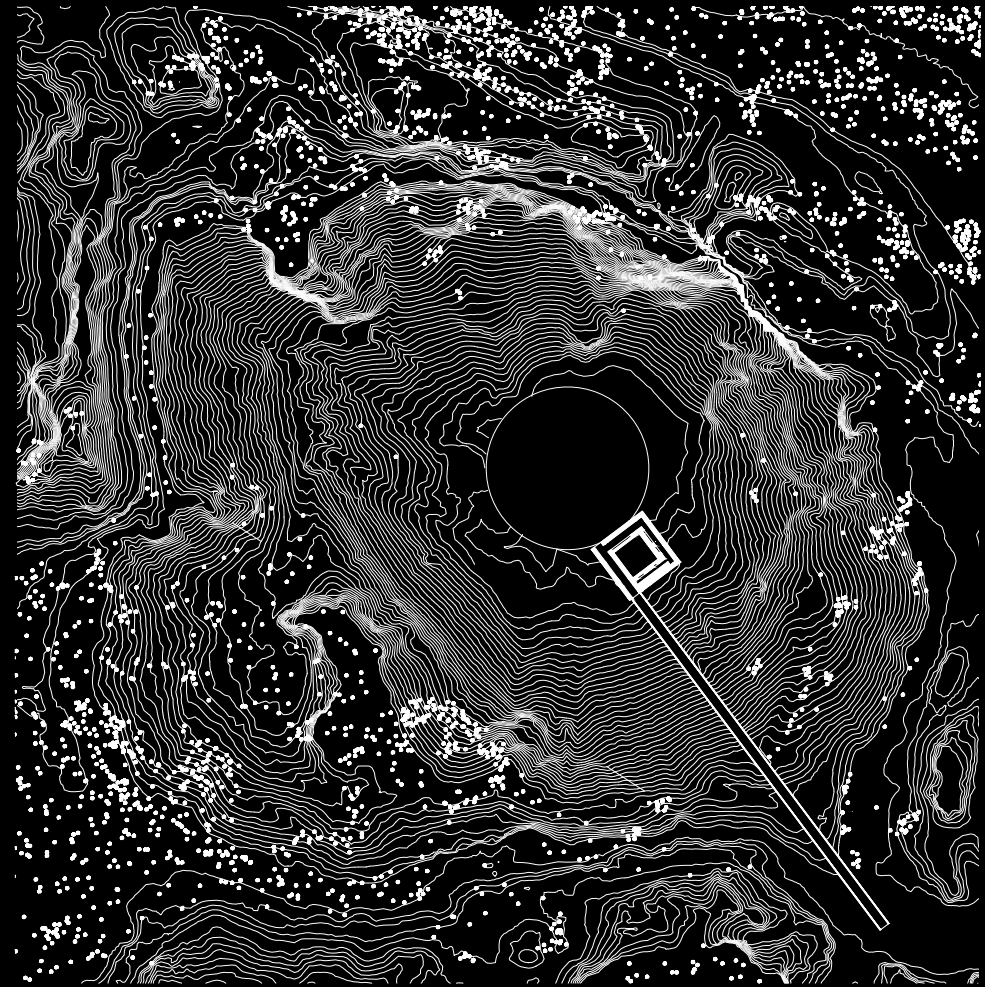


CLIMATE CHANGE AGAIN

11th International Biennial Landscape Barcelona

Barcelona September 2020
SCHOOL PRIZE

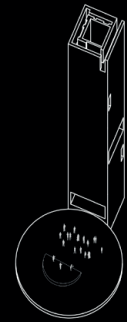




Installation art



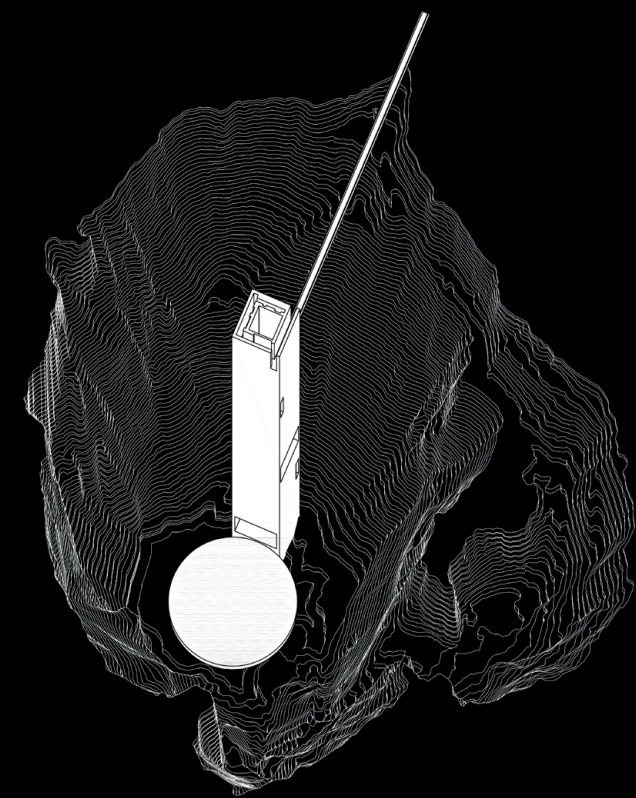
Green Space

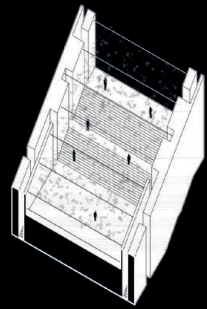


Cultural events

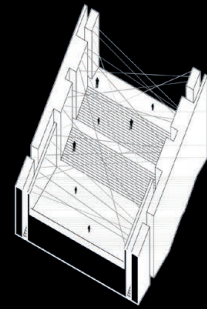


Water mirror

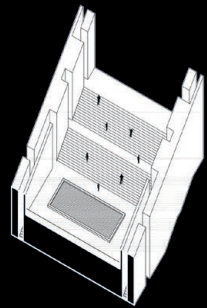




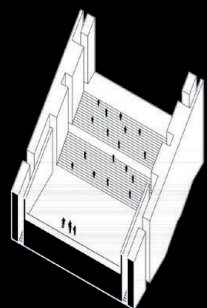
Plant-covered wires



Exhibition gallery



Water mirror



Events area

