

---

Country / City	Sardinia, Italy
University / School	University of Cagliari_Faculty of Engineering and Architecture
Academic year	2018-2019
Title of the project	Main Road and Side Roads. Connections between the founding cities of Sulcis-Iglesiente.
Authors	Sara Placentino, Manuela Serreli (students), Giorgio Peghin, Antonio Angelillo (teachers), Roberta D'Angelo, Anna Corda, Andrea Scalas (tutors)

## TECHNICAL DOSSIER

Title of the project	Main Road and Side Roads. Connections between the founding cities of Sulcis-Iglesiente.
Authors	Sara Placentino, Manuela Serreli
Title of the course	Mining Landscapes
Academic year	2018-2019
Teaching Staff	G. Peghin, A. Angelillo (teachers), R. D'Angelo, A. Corda, A. Scalas (tutors)
Department/Section/Program of belonging	DICAAR_University of Cagliari
University/School	University of Cagliari_ Faculty of Engineering and Architecture



### Written statement, short description of the project in English, no more than 250 words

The Sulcis Iglesiasiente railway network started operating in the 1920s, connecting mining sites, washeries, foundries, ports, cities and villages, and representing the central element of the communications and transport network of the mining production system. This route was abandoned in the mid-70s sanctioning a return to the isolation that had characterized this area in the past. Today the site of the disused railway track presents itself as an important testimony to the identity of the past: mining has irreparably left its traces in the landscape, connoting its identity. The project aims to re-qualify the abandoned railway track in a sustainable way, promoting a new modality of crossing the territory, by the conversion in a cycle-pedestrian path. Along the route, there are service stations and elements that go with the path and lead the eye across the landscape. The slow mobility practices allow a re-appropriation of the cultural and territorial identity. The theme of the itineraries is repeated in a smaller scale in Monteponi, village of miners currently in a state of total abandonment. The path allows the visit of the complex, enhancing the use of the abandoned buildings. The inner circulation branches off from the cycle-pedestrian main path. The route, which connects the main buildings of interest and the open spaces, ends on the large panoramic terrace of red muds, to whom is connected by the restored inclined plane, which hosts a funicular that connects the higher point of the route to the big tower down in the valley.

For further information  
**Máster d'Arquitectura del Paisatge -DUOT - UPC**

T: + 34 93 401 64 11 / +34 93 552 0842  
Contact via email at: [biennal.paisatge@upc.edu](mailto:biennal.paisatge@upc.edu)

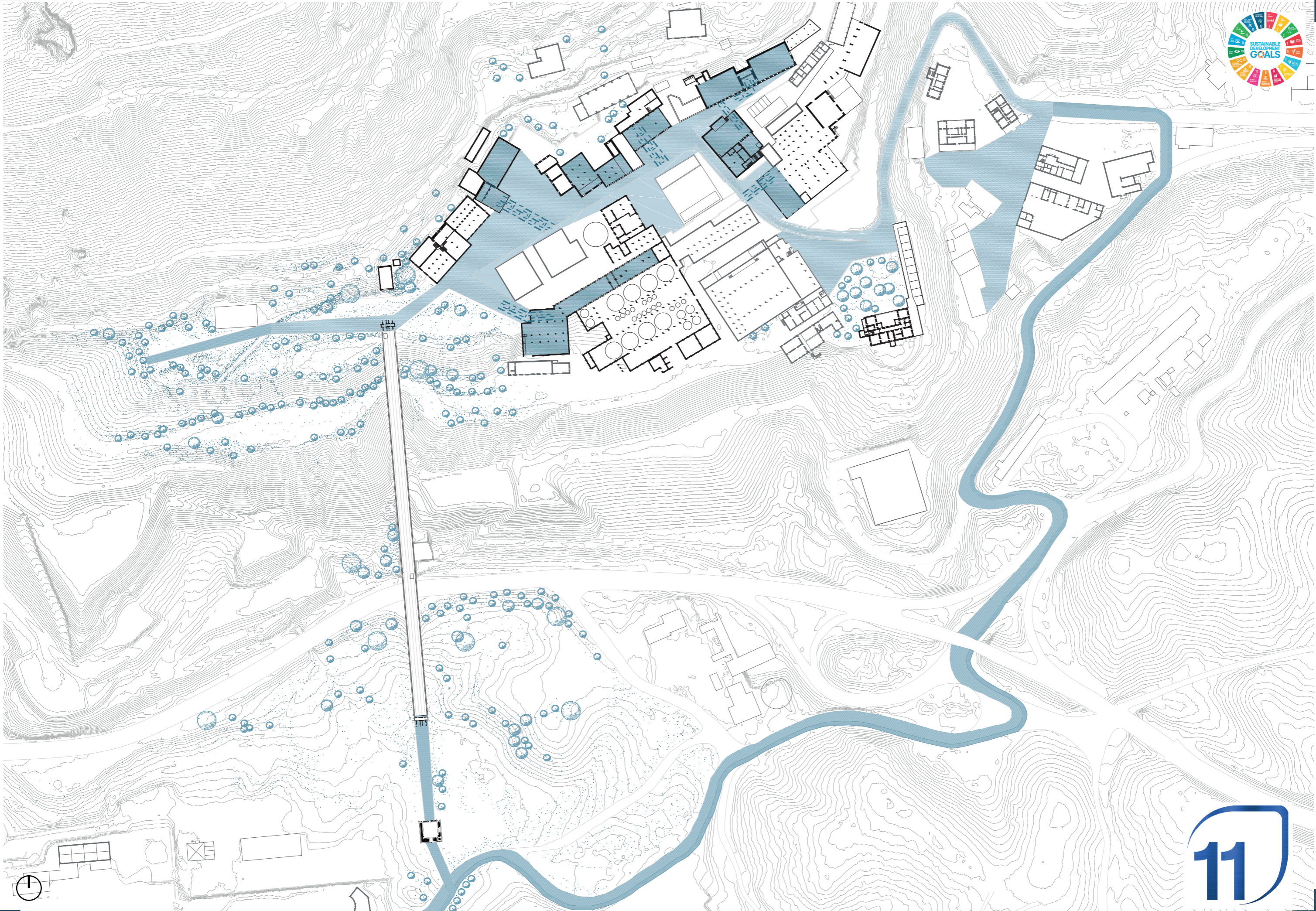
**Máster d'Arquitectura del Paisatge -DUOT - UPC**  
ETSAB- Escola Tècnica Superior  
d'Arquitectura de Barcelona  
Avenida Diagonal, 649 piso 5  
08028 Barcelona-S pain

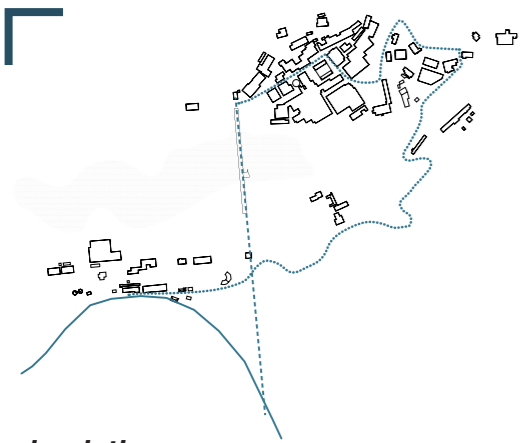


# CLIMATE CHANGE AGAIN

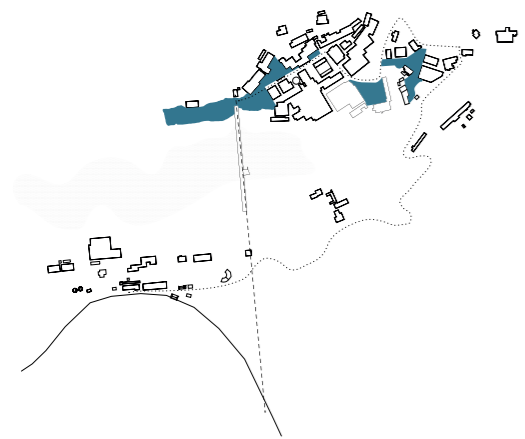
11th International Biennial Landscape Barcelona

Barcelona September 2020  
SCHOOL PRIZE

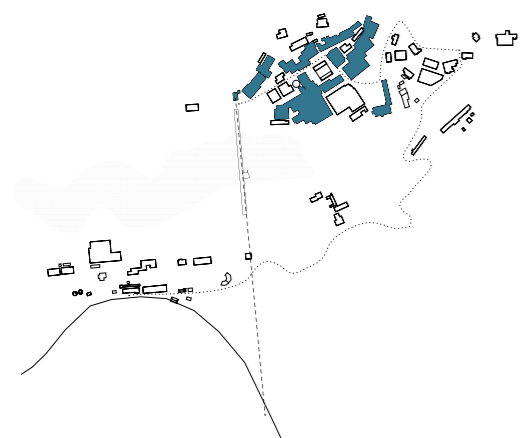




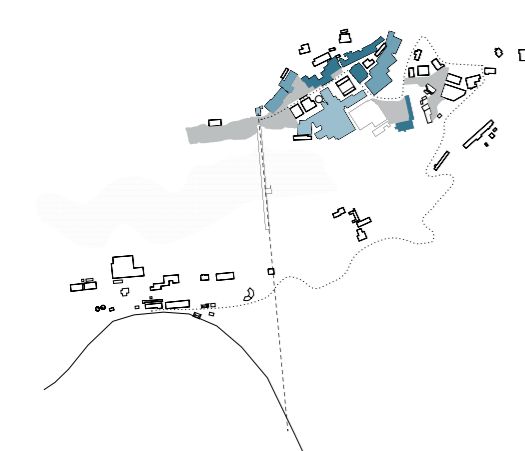
*circulation*



*open spaces*



*buildings of interest*



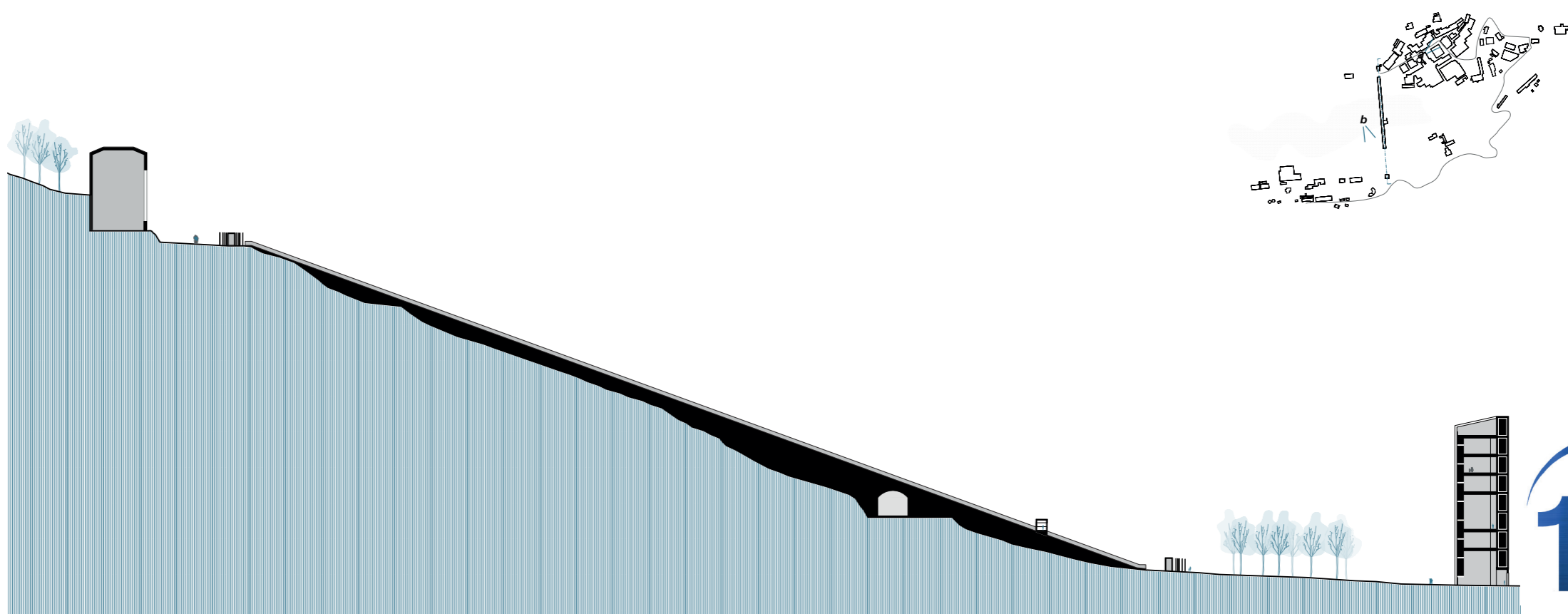
*accessibility*

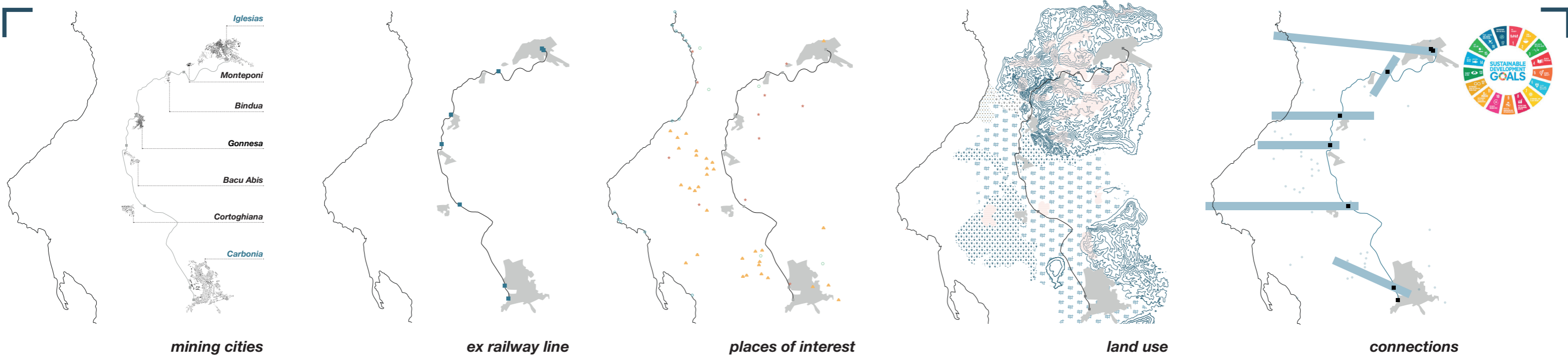


*a*



*b*





**strategies**

