



# HEP7APYRGION

Vision on the Acropolis of Thessaloniki Landscape again



Country / City **Greece / Thessaloniki**

University / School **Aristotle University of Thessaloniki / Joint Postgraduate Program of Landscape Architecture - Technical School and School of Agriculture**

Academic year **2019 - 2020**

Title of the project **HEP7APYRGION. Vision on the Acropolis of Thessaloniki Landscape again**

Authors **Alexandros Bantogias / Theodora Stamou**

## TECHNICAL DOSSIER

Title of the project **HEP7APYRGION. Vision on the Acropolis of Thessaloniki Landscape again**  
Authors **Alexandros Bantogias / Theodora Stamou**  
Title of the course **Landscape, urban open space design**  
Academic year **2019-2020**  
Teaching Staff **Dr Maria Ananiadou - Tzimopoulou / Dr Anastasia Papadopoulou / Dr Maria Tratsela**  
Department/Section/Program of belonging **Department of Architecture / Joint Program of Landscape Architecture**  
University/School **Aristotle University of Thessaloniki / Technical School - School of Agriculture**



Written statement, short description of the project in English, no more than 250 words

**The Heptapyrgion Fortress, which occupied the hill on the Acropolis of Thessaloniki, is one of the Balkan's most emblematic fortification complexes. Thessaloniki is on the front line of climate change, as experiencing long-period droughts through summer and sporadic but heavy storms in the fall and spring. The urban open spaces and natural environment are limited, extremely shredded, without offering actual services to people. As a result, this Greek urban landscape suffers from severe ecological and social disorders. Our vision is articulated on three thematic horizons, serving the social, cultural and ecological needs by trying to redefine and reclaim the lost landscape qualities. The Cultural Horizon highlights, protects and gives prominence to the archaeological site throughout a purposeful design strategy that addresses the themes of revelation and public readability. The Socioeconomic Horizon encounters the public needs, by proposing an urban fabric that encourages social practice and everyday activities by offering public areas of high quality and productive services. The Ecological Horizon underlines the importance of natural environment in urban areas, enhancing the vegetation by considering the needs and gradually aiming at restoring the disturbed ecological balance. To this end, our project addresses the themes of cultural heritage nomination and general location gentrification by redefining the boundaries within the urban landscape, restoring the ecological balance and creating spatial continuities. Finally aiming at creating a new place for social practice that meets people's expectations and at the same time being a landmark that underlines its cultural and historical heritage.**

For further information  
Máster d'Arquitectura del Paisatge -DUOT - UPC

T: + 34 93 401 64 11 / +34 93 552 0842  
Contact via email at: [biennal.paisatge@upc.edu](mailto:biennal.paisatge@upc.edu)

Máster d'Arquitectura del Paisatge -DUOT - UPC  
ETSAB- Escola Tècnica Superior  
d'Arquitectura de Barcelona  
Avenida Diagonal, 649 piso 5  
08028 Barcelona-Spain



# CLIMATE CHANGE AGAIN

11th International Biennial Landscape Barcelona

Barcelona September 2020  
SCHOOL PRIZE



Location & Site Analysis 001

**Down. Photographs**

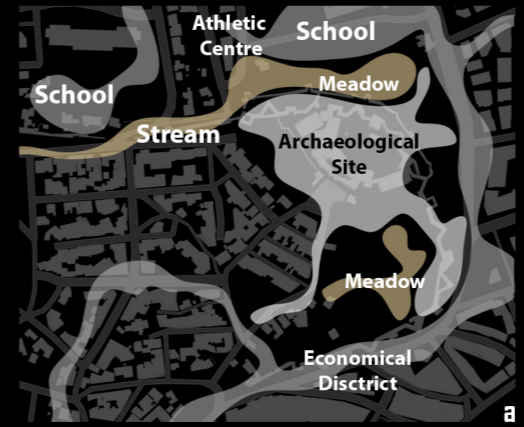
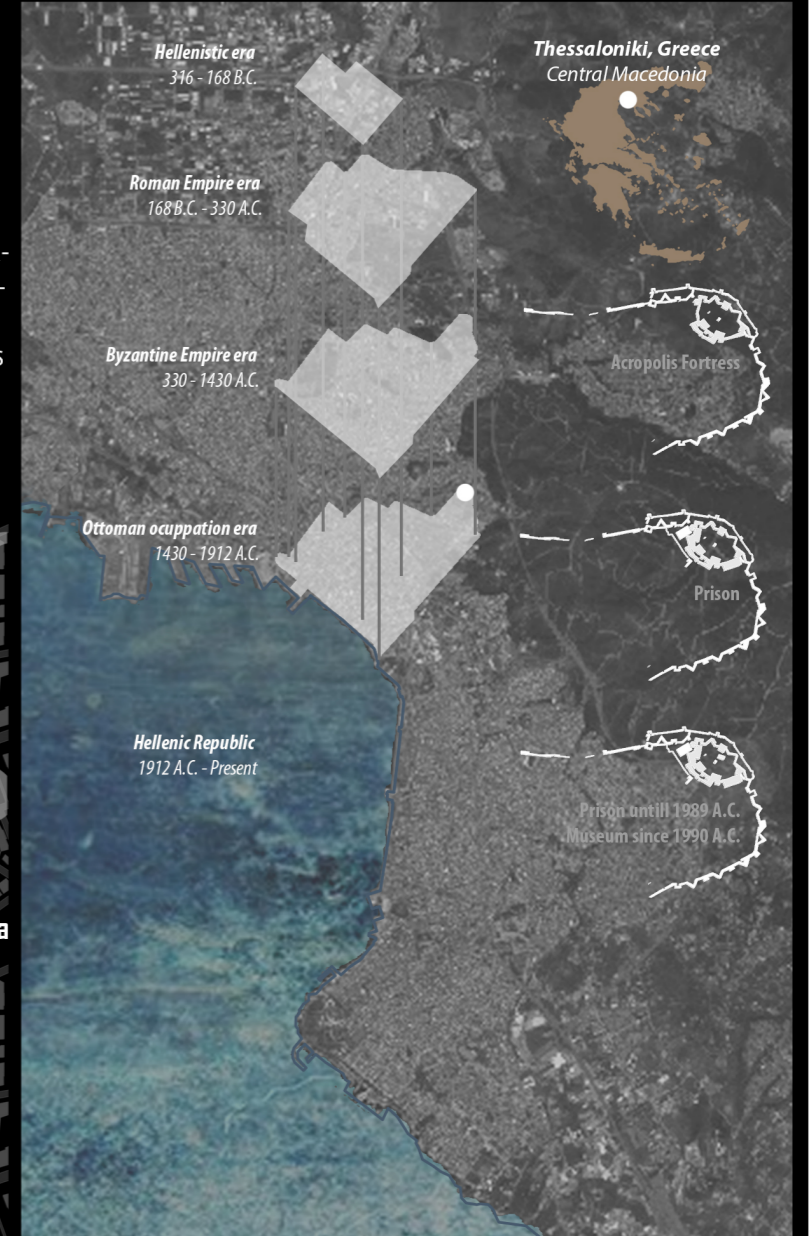
- 1 The Heptapyrgion Fortress & the Prison Buildings
- 2 The remnants of the Byzantine Walls
- 3 The Heptapyrgion and the view to Thermaikos Gulf



**Left. Site Analysis. The existing**

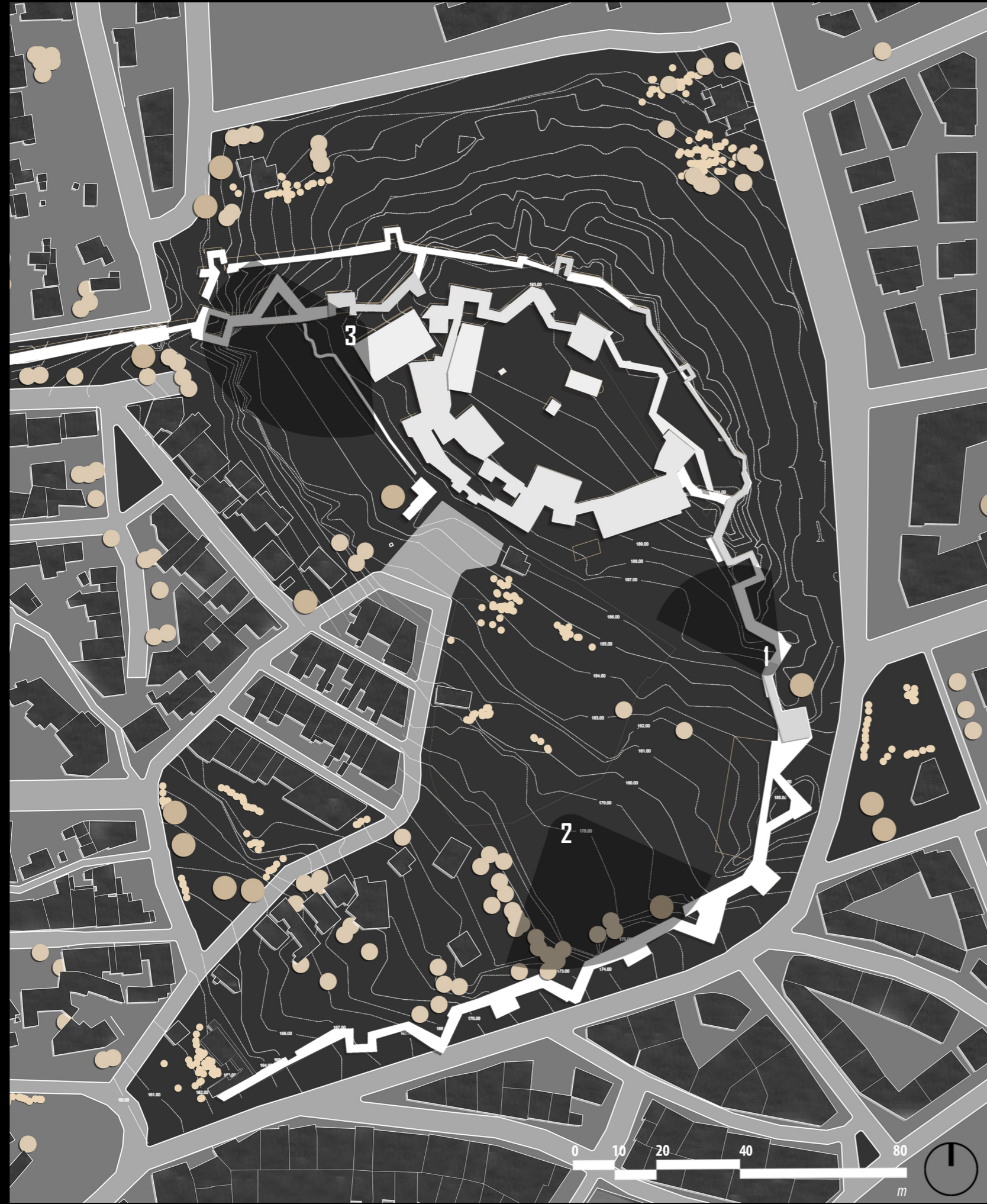
**The Heritage. Cultural & Natural**

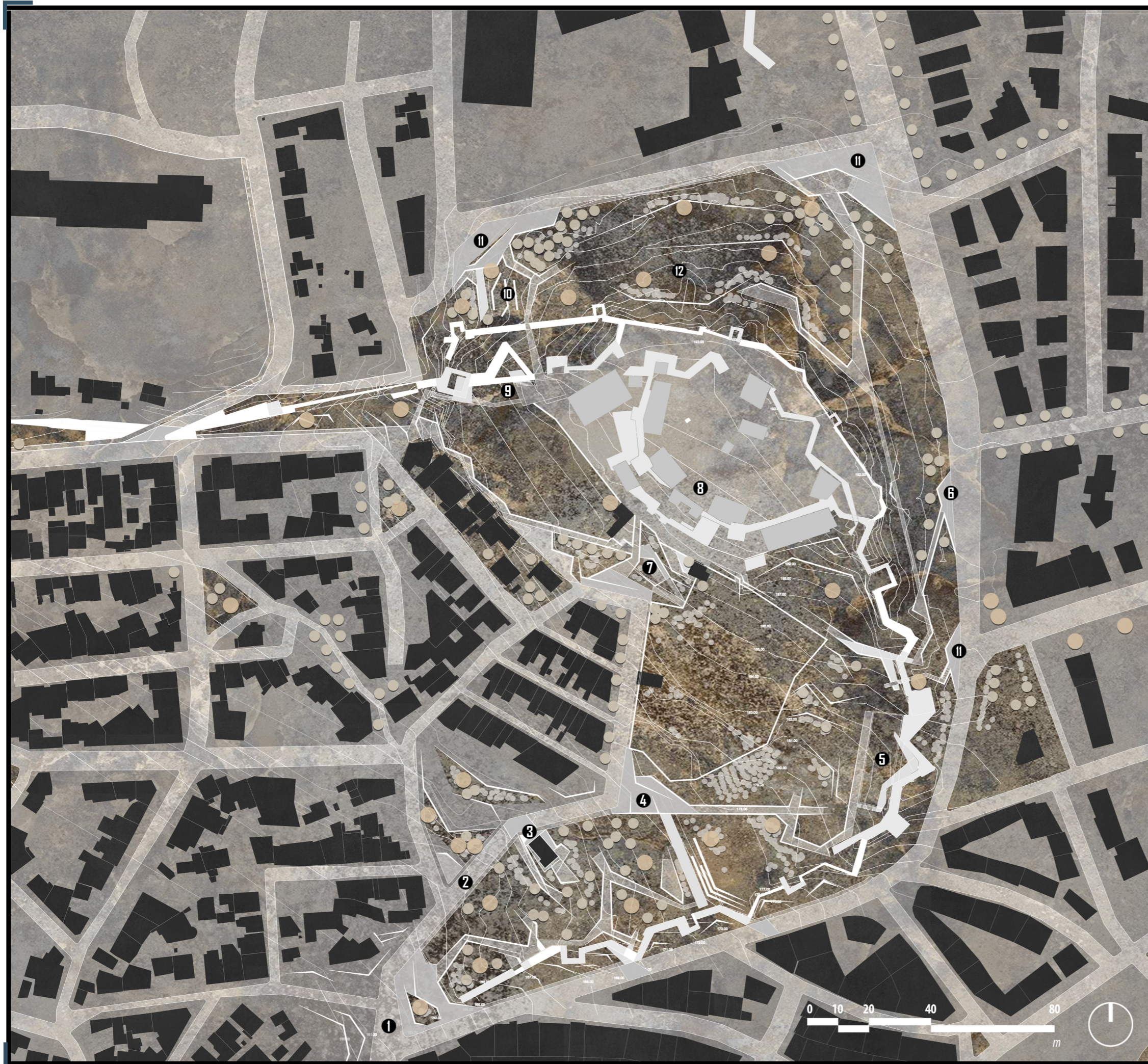
The Heptapyrgion Fortress (as it consisted of seven (Hepta-) towers in its initial form), occupied the hill on the Acropolis of Thessaloniki, is one of the Balkan's most emblematic fortification complexes. Due to its vantage point, overlooking the Thermaikos Gulf and its inland, played a key role in military defense since the first human settlement in Byzantine era. Also, used as prison from Ottoman occupation till 1989, it passes on both historic and cultural heritage, molding the location identity.



**Site Analysis**  
a Spattial Usage  
b Places of Interest

**Location & Spatial Development of Thessaloniki and Heptapyrgion**





**Masterplan Legend**

Soft Materials & Vegetation	Hard Materials & Surfaces	Heptapyrgion
Ground coverage	Pavement	Fortress buildings
Small Plant masses	Roads	Fortress Walls
Small Trees	Pavement on B. blocks	Remnants
Big Trees	Walls	

**Our Vision** on the Acropolis of Thessaloniki Landscape again  
 Cultural horizon. Culture again



Socioeconomic horizon. Society again



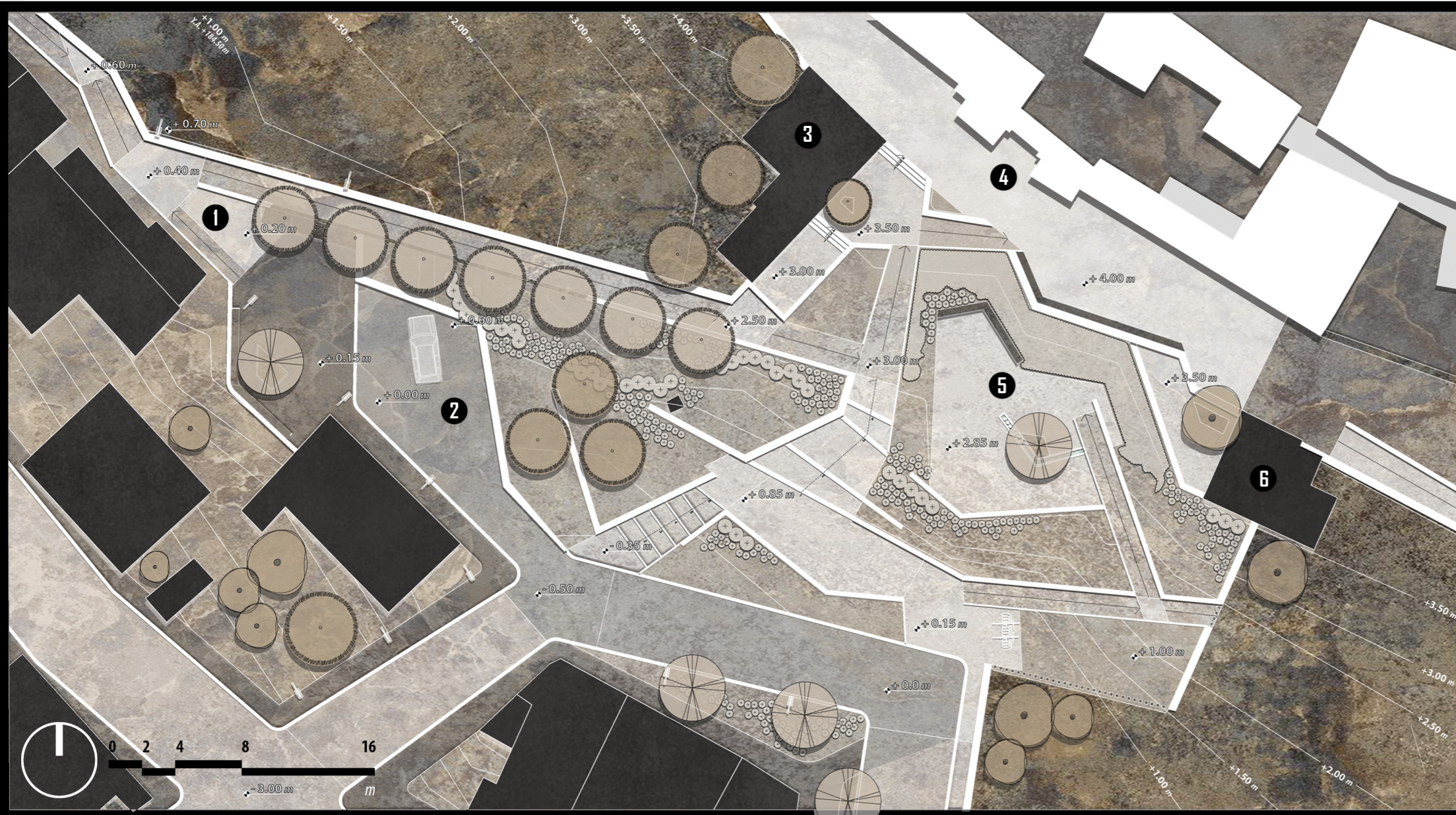
Ecological horizon. Climate again



Portara Entrance	1	
Western Krini	2	
Culture & History Centre	3	
Eastern Krini	4	
Kinsterna	5	
Perforation in Seih-Sou	6	
Fortress Square	7	
Museum	8	
Observatory	9	
Outdoor Classroom	10	
Secondary Entrance	11	
Meadow	12	

**Places of Interest**  
 Categorized by their contribution to Vision on Landscape again





**Heptapyrgion Entrance**

**Legend**

**Places of Interest**

- 1 Secondary Entrance
- 2 Parking lot
- 3 Ticket office
- 4 Museum Entrance
- 5 Rest area
- 6 Warehouse

**Soft Materials & Vegetation**

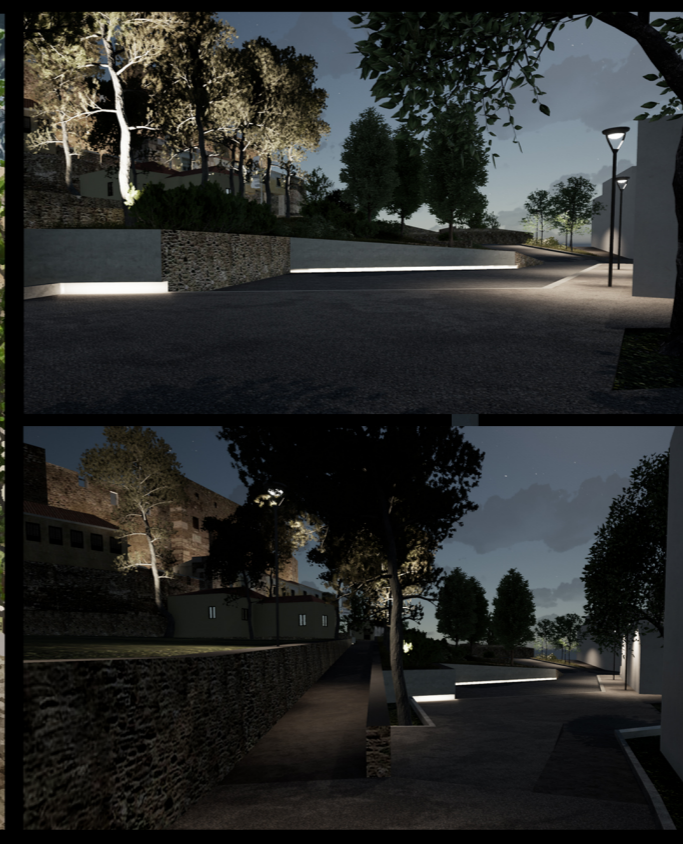
- Existing**
- Trees
  - Ground cover
- Proposed**
- Trees
  - Tall shrubs
  - Short shrubs
  - Grass

**Hard Materials & Surfaces**

- Pavement**
- Pavevery
  - Cobblestone
  - Asphalt
  - Marble
  - Pebble pavement
  - Bare concrete
  - Marble tile
- Walls**
- Retain wall
  - Road curb
  - Pavement curb
- Urban equipment**
- Lighting equipment
  - Water feature
  - Seating bench
  - Wooden paling

**Planting Strategy**

The purpose of the strategy is to enhance the existing vegetation and provide an direction to the management and use of the new plantings. Our vision aims to protect the archaeological site, enhance the existing vegetation and provide a new natural environment that is capable to cope with the modern challenges of climate change. The overall goal is the restoration of the ecological balance as it is highly degraded due to the high density penetration of the urban fabric, but also to protect and represent the cultur heritage, the remnants of the Walls and the Heptapyrgion. Priority is given to the endemic species, species with high enviromental adaption, species used as a wildlife shelter and purposeful plantings with specific botanical characteristics suitable for archeological sites.



**Ecological horizon Cultural horizon Socioeconomic horizon**



**Desired Characteristics of Planting per horizon**

**Renders**  
 a View to Heptapyrgion Entrance  
 b, c Night Perspective

