

Country / City Greece/Patras

University / School Patras School of Architecture

Academic year 2019-2020

Title of the project KAMPOS>2020 : A case for the future of Greek rural land

Authors Stalika Iro, Stamatiou Konsta Evangelia

TECHNICAL DOSSIER

Title of the project	KAMPOS>2020: A case for the future of Greek rural land
Authors	Stalika Iro, Stamatiou Konsta Evangelia
Title of the course	Design Thesis
Academic year	2019-2020
Teaching Staff	Grivas Kostantinos, Pappas Vasilis
Department/Section/Program of belonging	Architecture Department
University/School	University of Patras



Written statement, short description of the project in English, no more than 250 words

This thesis is a hypothesis about the future of the Greek rural land and more specifically of the Thessalian rural area. The Thessalian flatland is the 2nd largest productive plain in Greece with almost 5 million acres of arable land. Nevertheless, in the last four years, 7% of these acres have been abandoned due to infertility and soil erosion. We are creating a masterplan that focuses on successive scales and seeks to redesign the rural landscape. The area strategy is developed to ensure a sustainable future for agricultural production in adverse climatic conditions. We create different areas and zones for better land and water management (livestock area, new agriculture pattern), more efficient organization of the trade-production cycle (distribution zone) and energy autonomy (renewable energy park). To ensure biodiversity new types of cultivation are proposed depending on soil type. The attractions and the landscape in the area are strengthened through paths, that mainly run along rivers, placed in forest zones. Forests operate as climate regulators and enhance plain's biodiversity.

Our proposal includes building infrastructures which are placed within the rural landscape. Each building is designed to have a unique dialogue with the surrounding environment (river overflow, crop's horizon). The buildings' programs aim to strengthen and modernize production through research (Research Ring), increase production (Underground Laboratories), organize the production-processing-trade chain better (Service Stations) and extroversion (Exhibition Center).

For further information
Máster d'Arquitectura del Paisatge -DUOT - UPC

T: + 34 93 401 64 11 / +34 93 552 0842
Contact via email at: biennal.paisatge@upc.edu

Máster d'Arquitectura del Paisatge -DUOT - UPC
ETSAB- Escola Tècnica Superior
d'Arquitectura de Barcelona
Avenida Diagonal, 649 piso 5
08028 Barcelona-Spain



CLIMATE CHANGE AGAIN

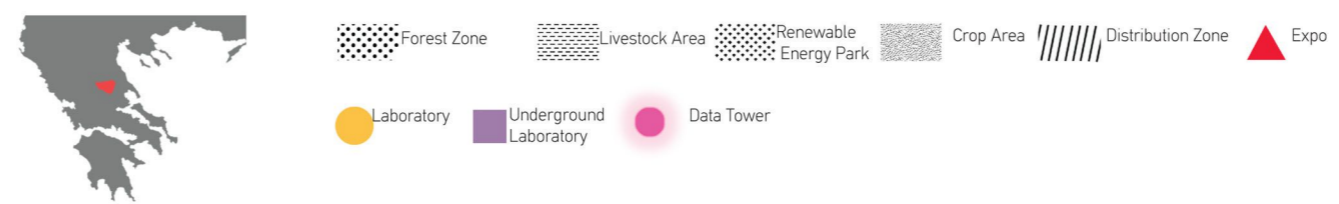
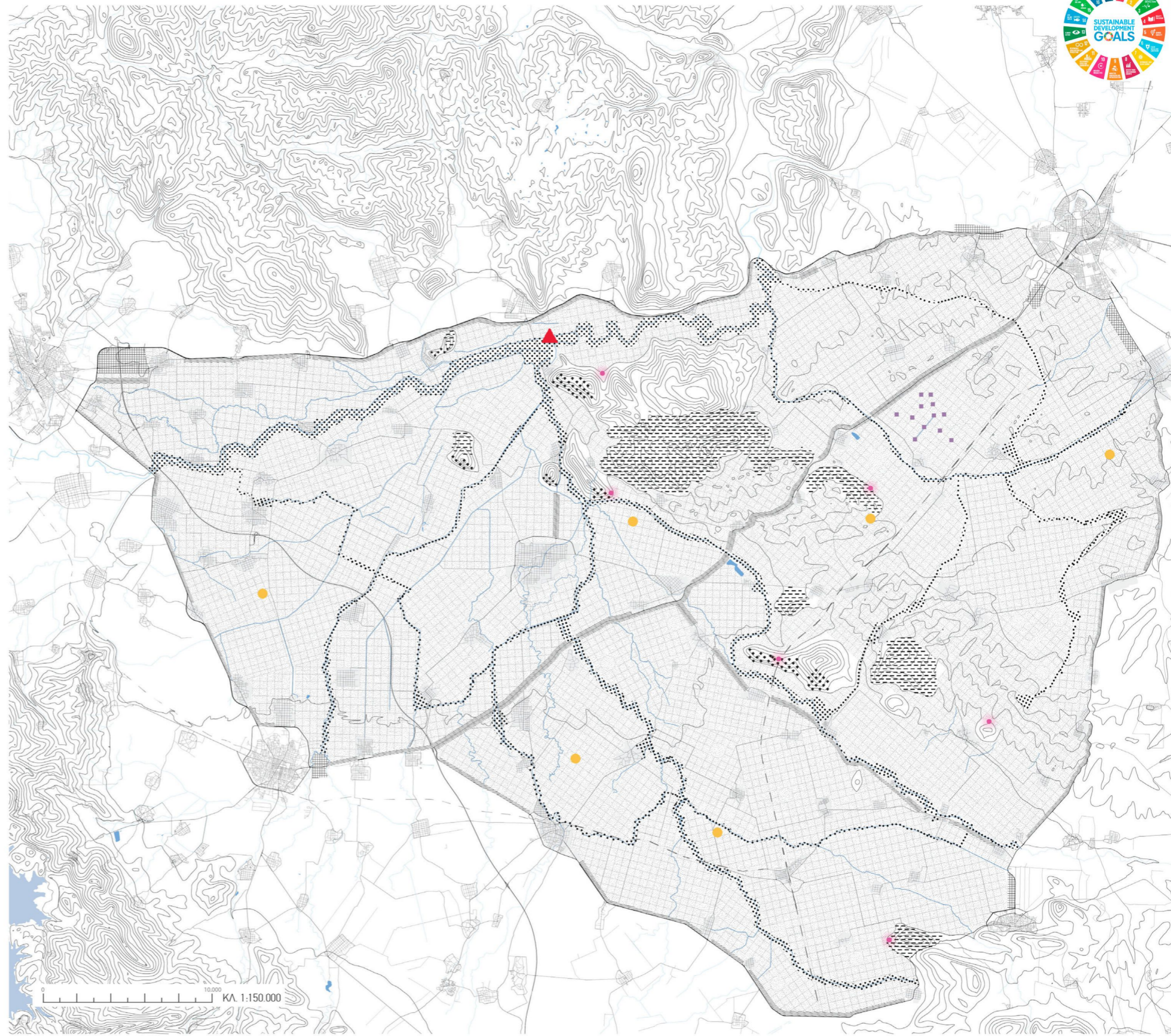
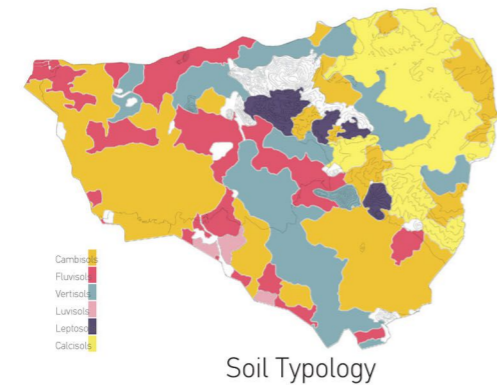
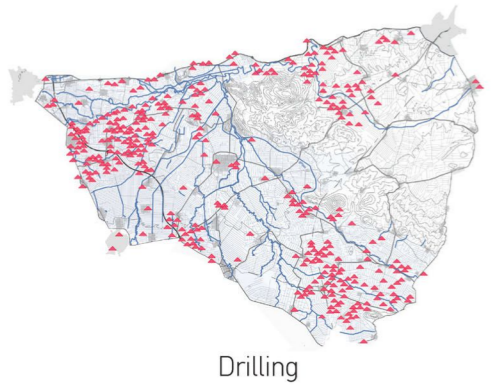
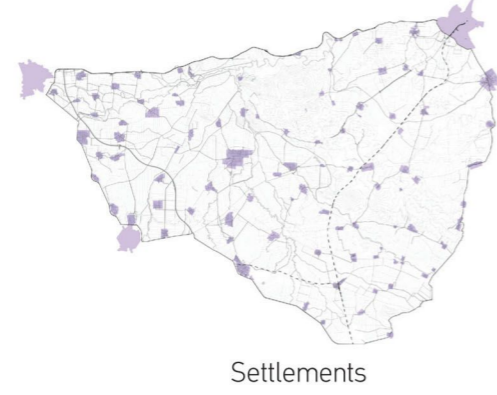
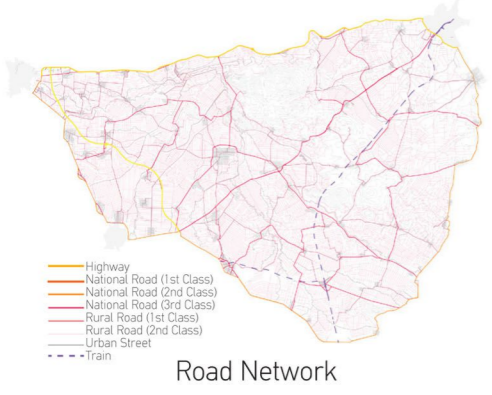
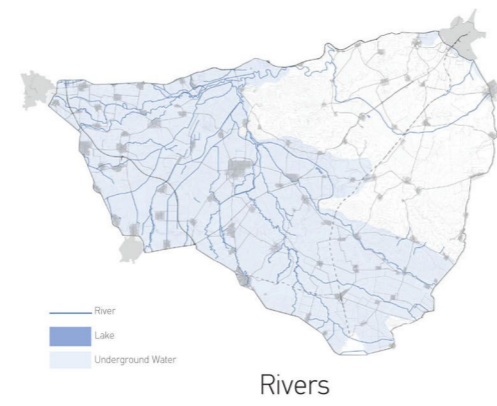
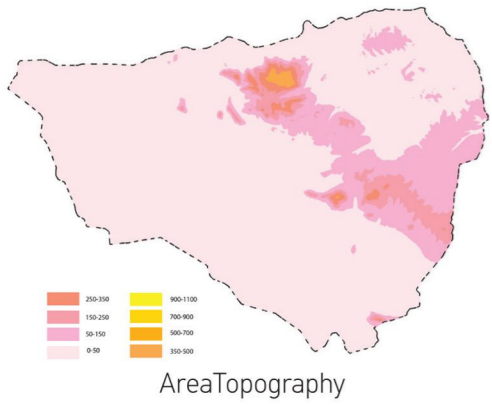
11th International Biennial Landscape Barcelona

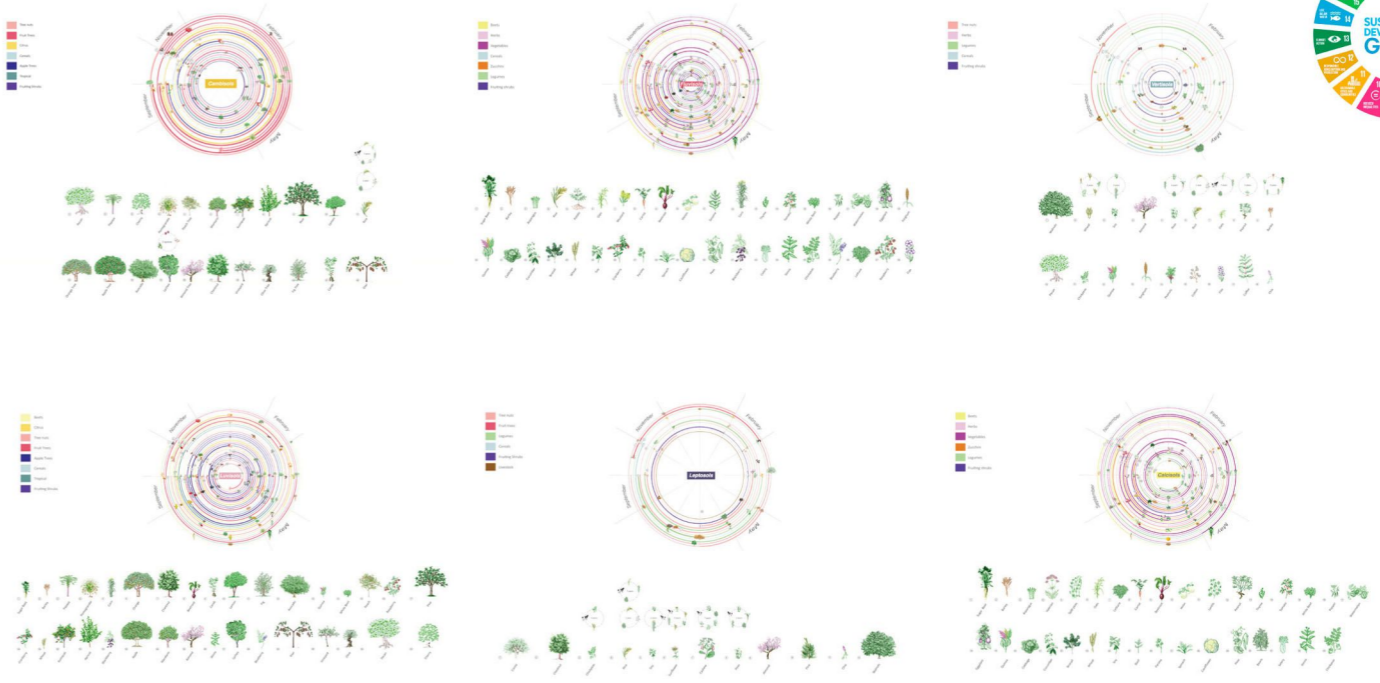
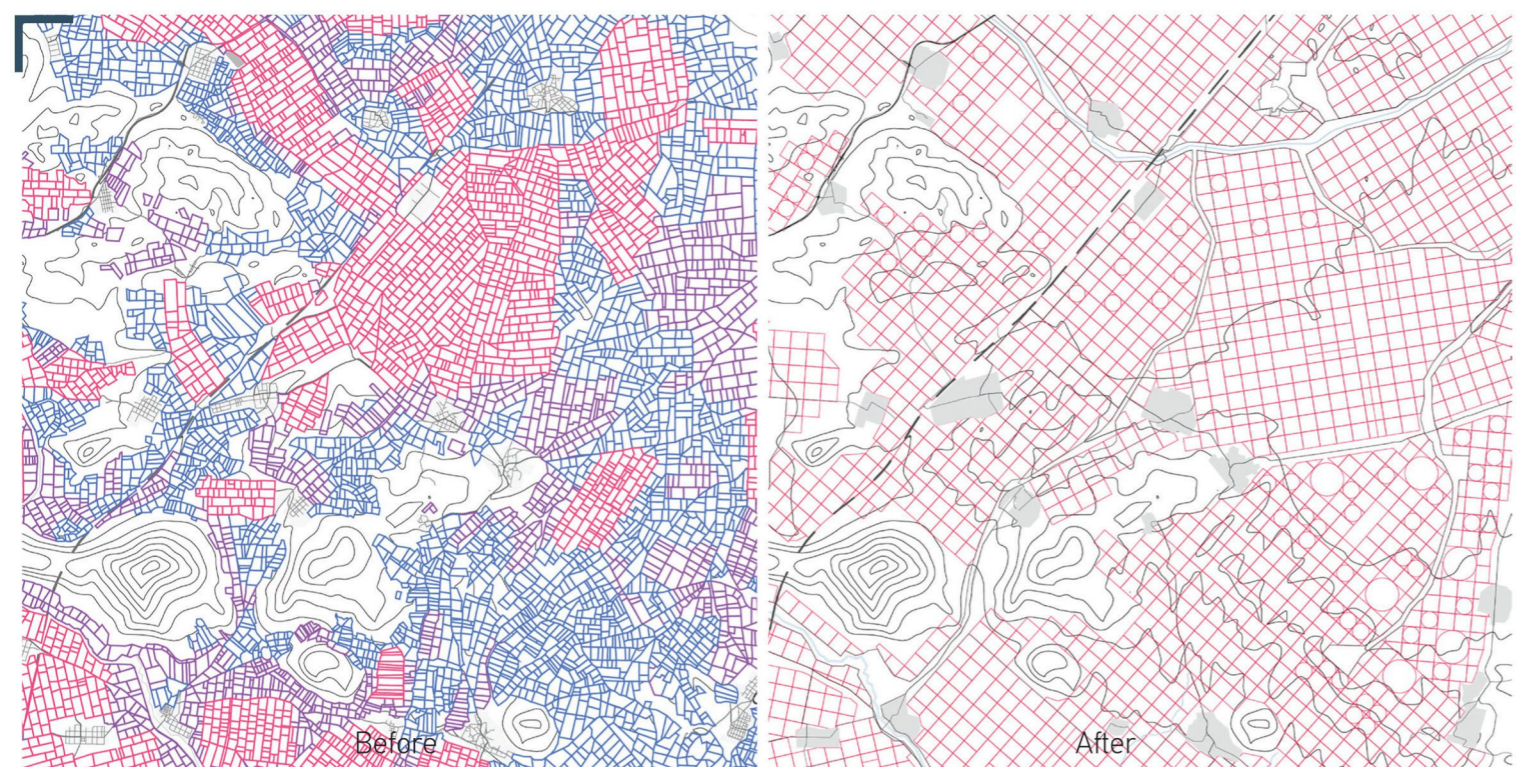
Barcelona September 2020
SCHOOL PRIZE

KAMPOS > 2020: A case for the future of the Greek rural land

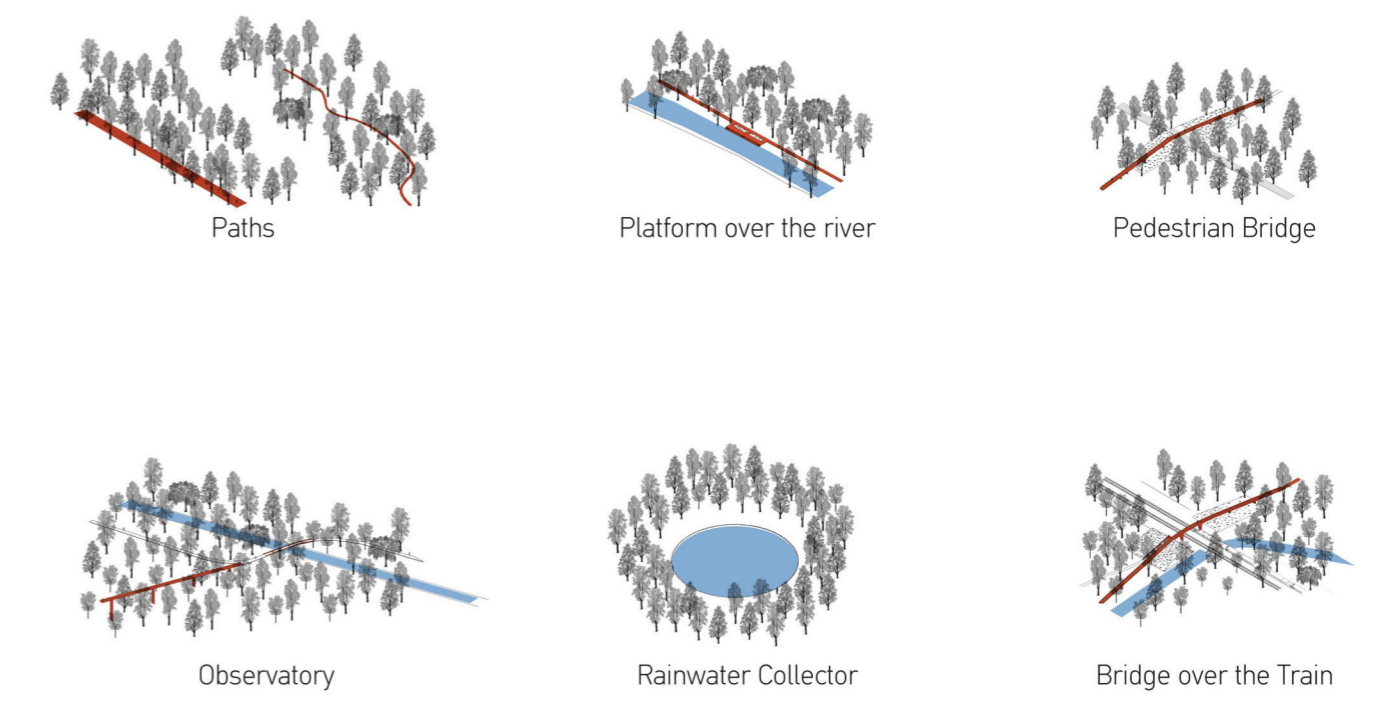
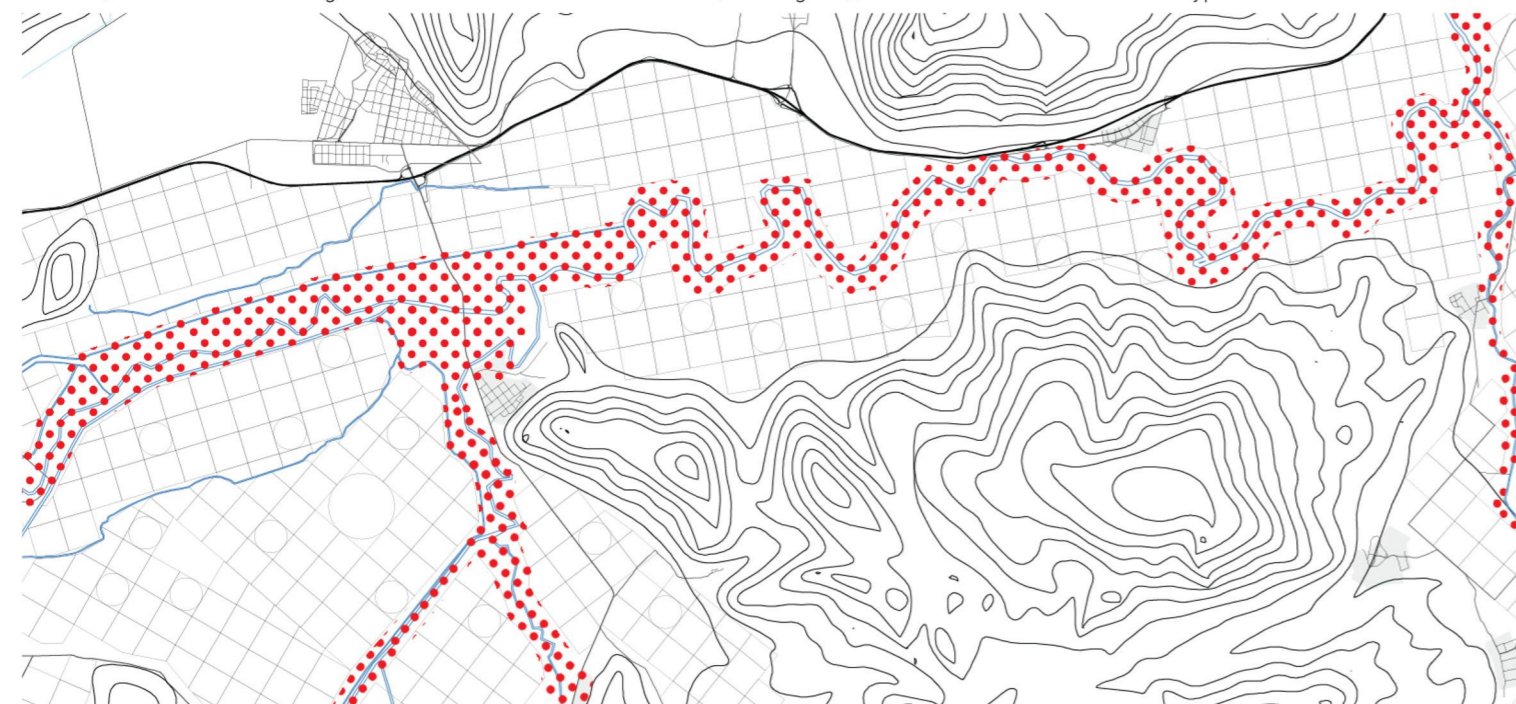


The study area is the part of the Thessalian flatland defined by national roads connecting four big cities of Thessaly region [Larissa, Trikala, Karditsa, Farsala]. The area is almost flat and is located 90 meters above sea level. In the center there is a mountain range with an altitude of 600 meters, which divides the area vertically into eastern and western parts. The northern part is crossed by the river Pinios. From there, tributaries begin, which spread throughout the western part of the plain. In the study area there are 102 settlements with a population ranging from 7 to 6000 inhabitants.





Agriculture Pattern: It is proposed the change of crop's pattern organization, to a grid system, measuring 400x400 or subdivisions of this. This organization facilitates the introduction of new irrigation technologies (such as rotating and parallel irrigation) and consequently saves water resources, while rainwater can get reused. To deal with monoculture (cotton-grain), new cultivars suitable for each type of soil are recommended.

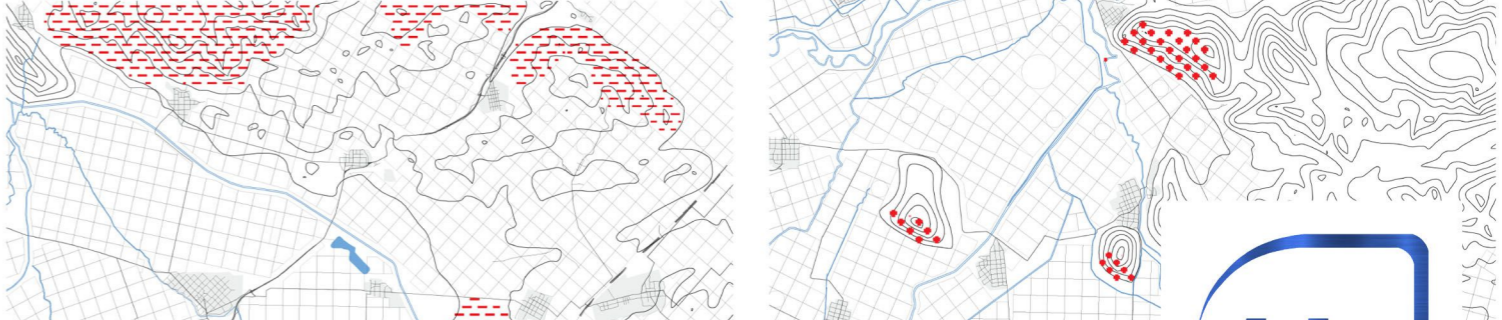


Forest Zones: The forest zones run along the rivers and spread throughout the whole area. Inside we create walking and cycling routes, we place observatories to observe the rural landscape, water tanks to collect rainwater or water from rivers' overflow.



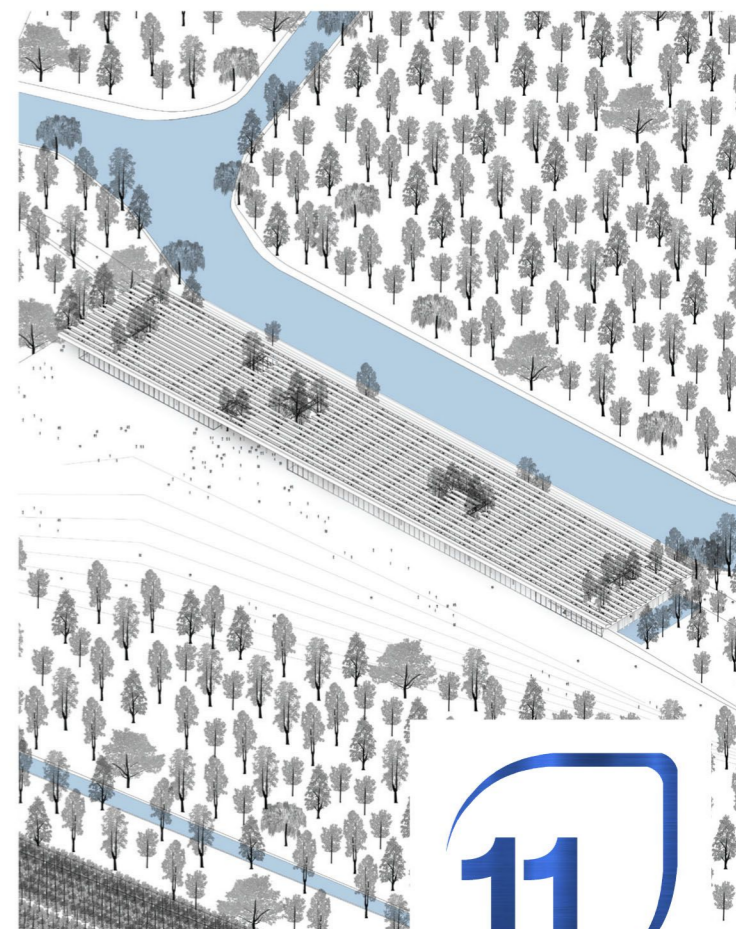
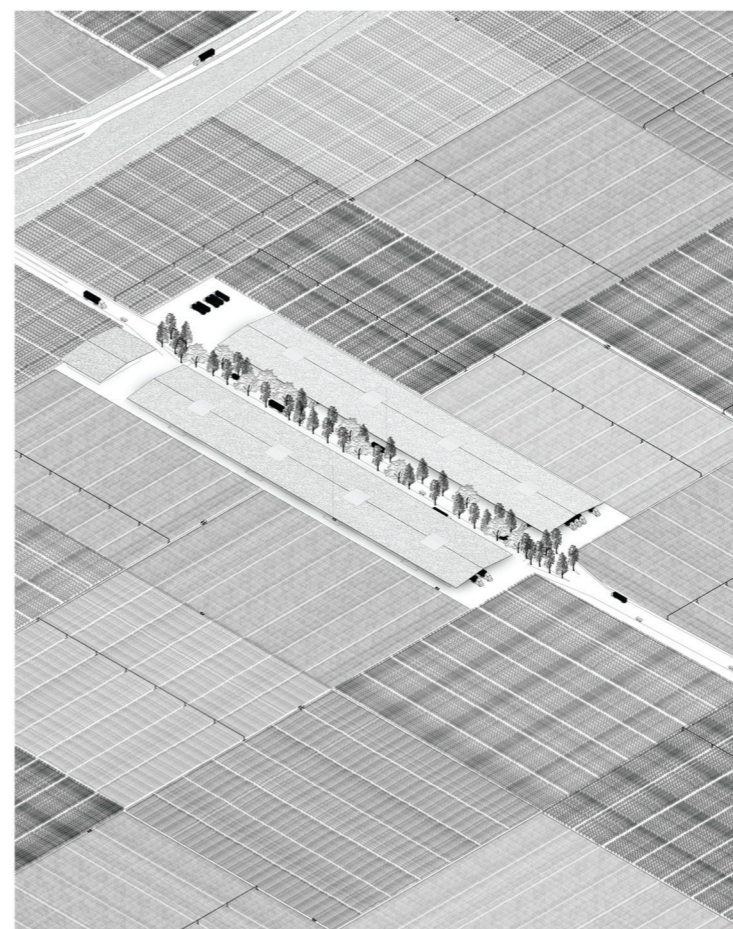
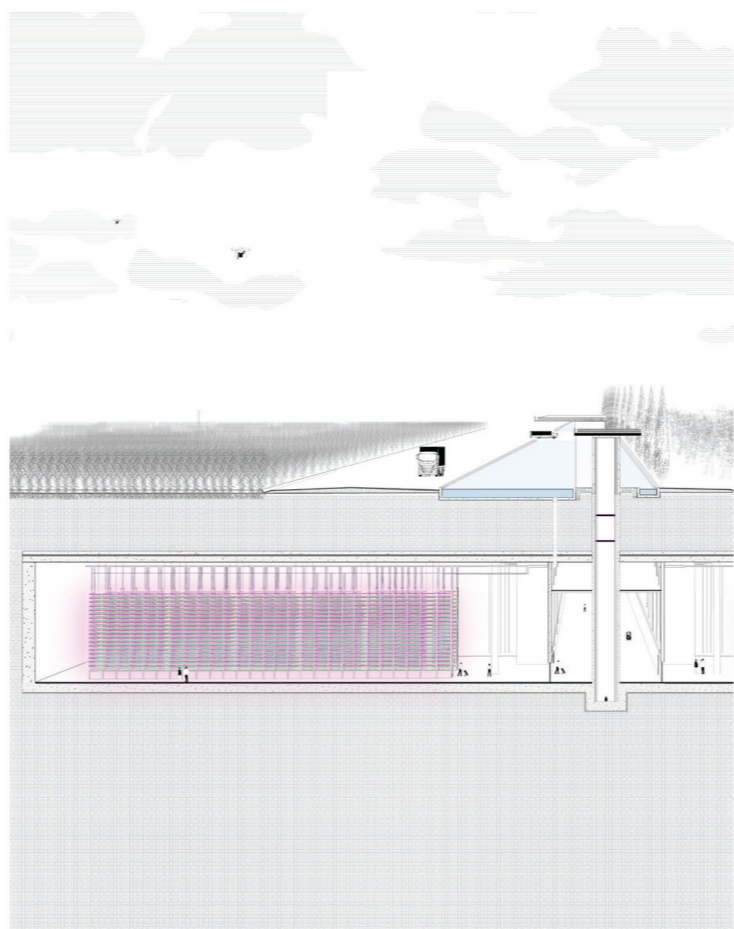
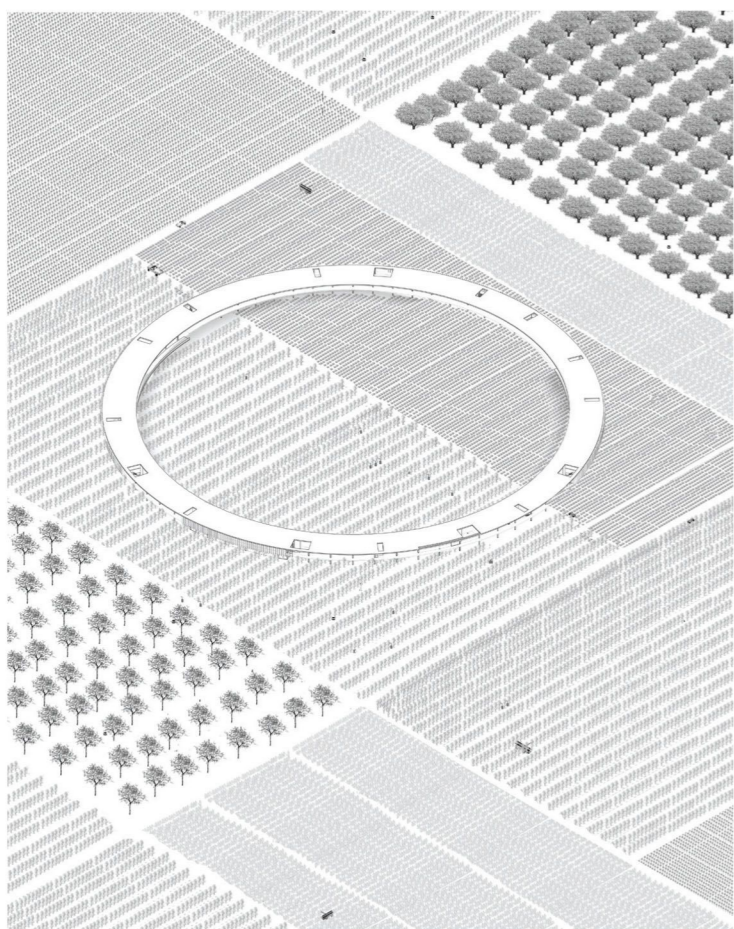
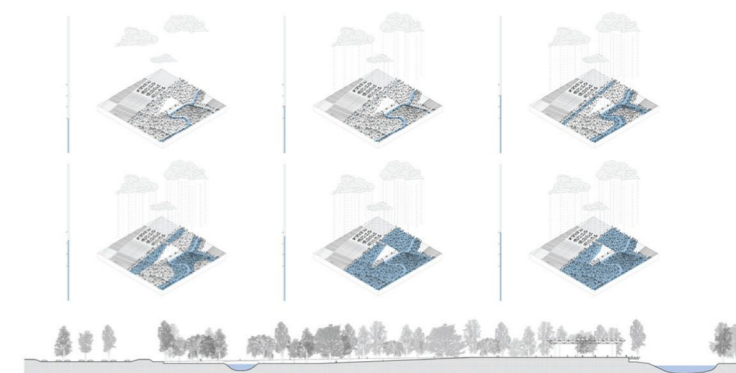
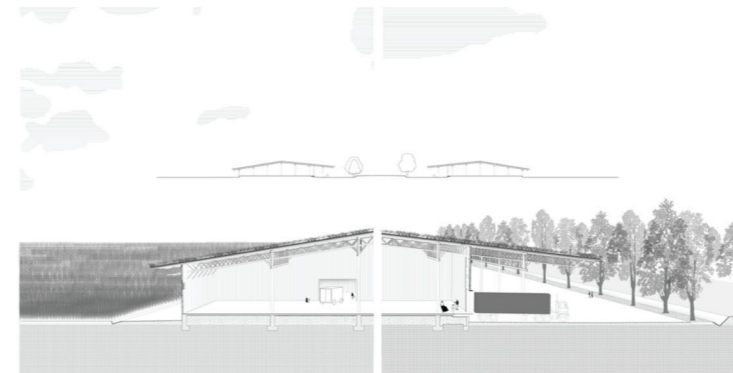
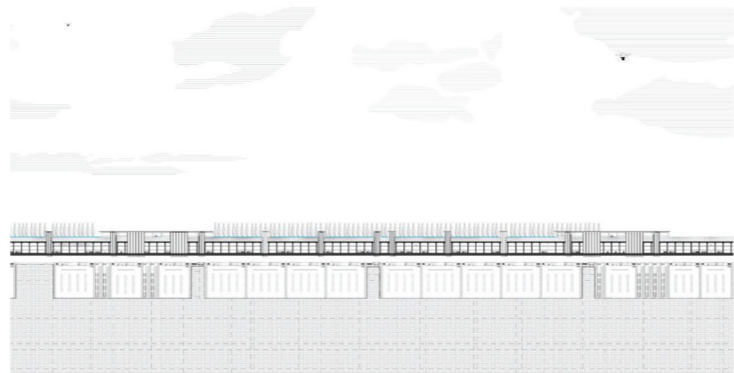
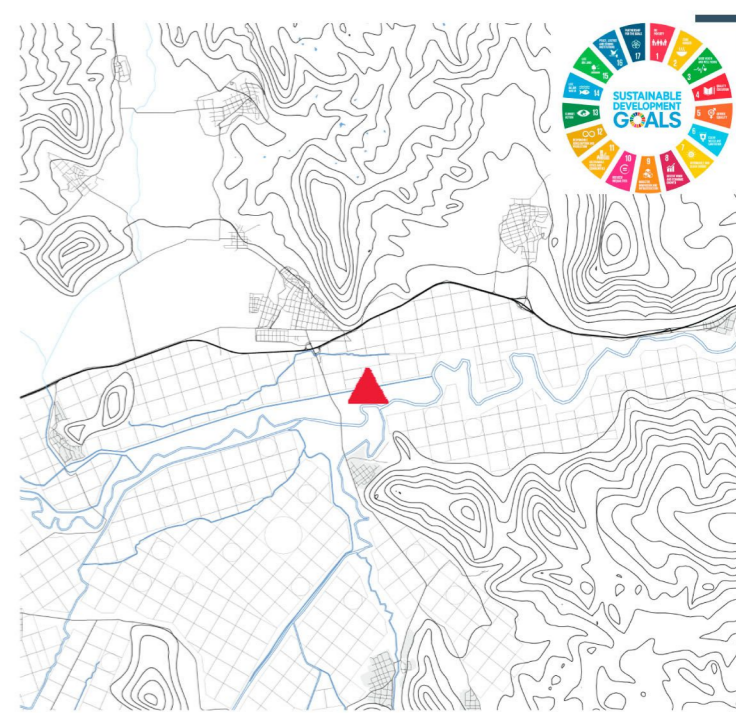
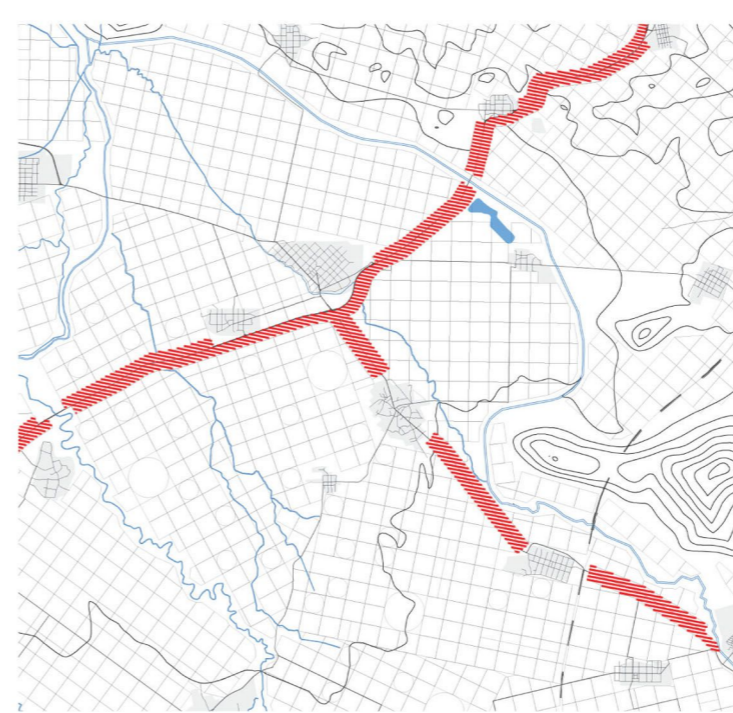
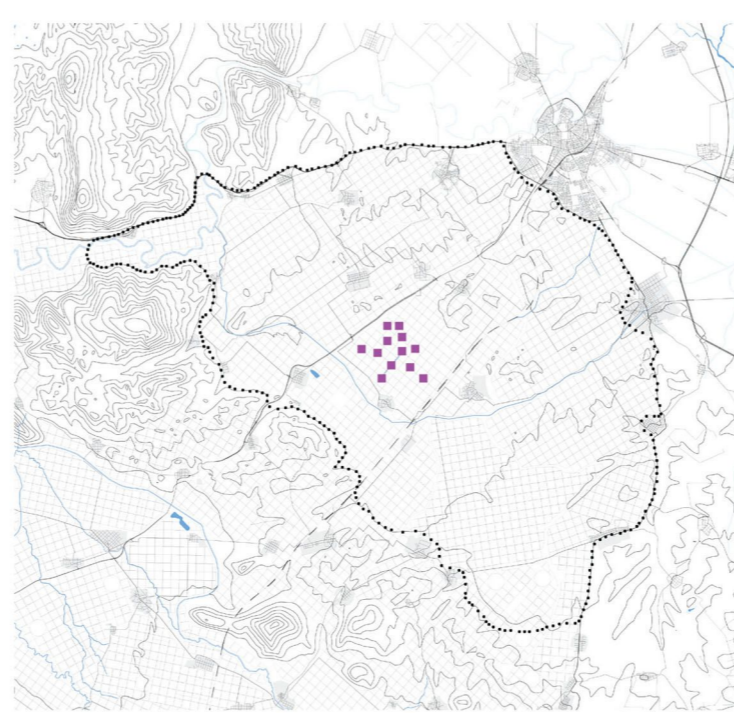
The industrial facilities are gathered on predetermined industrial areas of the urban centers located on the perimeter of our site.

Along the big roads we create 150-meter-wide zones on both sides of the road. There, metallic silo, are placed, where the products from the fields are separated and packaged to be transported to industries or abroad. This zone is also a parking for the big trucks.



Livestock farming is limited to predetermined areas mainly on mountains to avoid crops' destruction and to fertilize the land. At the same time, it is encouraged due to crop rotation grazing on predefined plots.

Solar Parks are placed on hills on the west side with south orientation



Research Ring

Underground Laboratory

Distribution Station

Exhibition Center

