



Country / City Thailand, Suphanburi  
University / School King Mongkut's Institute of Technology Ladkrabang  
Academic year 2019/2020  
Title of the project Lumtapoen: Eat Well, Live Well District  
Authors Auakarn Pakdee

## TECHNICAL DOSSIER

Title of the project	Lumtapoen: Eat Well, Live Well District
Authors	Auakarn Pakdee
Title of the course	Master Planning /Regional Planning
Academic year	2019/2020
Teaching Staff	Munggorn Chaijaroenmaitre, Worasak Luangsuwan
Department/Section/Program of belonging	Landscape Architecture/BLA
University/School	King Mongkut's Institute of Technology Ladkrabang



### Written statement, short description of the project in English, no more than 250 words

This project is proposed based on the perceived problems of imbalances in country development, focusing on the lack and inadequacy of development in rural areas especially in farmer's communities which play a vital role for national food security.

The project is a village next to Lumtapoen Agricultural Reservoir in Suphanburi, a city with agricultural capabilities that has been an important fertile region of Thailand for many centuries. In the past decades, the area has been heavily destroyed by inappropriate shifting from traditional agriculture to industrial agriculture that causes many negative changes to the community, such as environmental degradations, contamination of natural resources, and monoculture that leads to declining in crop yields. This led to the change of people's lifestyles. To help mitigate the issues resulting from the improper developments, the project proposes the agricultural community providing a sustainable food source, promoting the concept of "eat well, live well" that comes from the fertility of its location. The design aims to preserve the identity of traditional farming and combine the new design that offers the edible corridors to celebrate the importance of agriculture and act as an alternative circulation for supporting physical activities.

"Lumtapoen: Eat Well, Live Well District" is not only affected the lifestyle of people, but also made a lot positive change to economy, society, and environment. It could be presented as an ideal prototype of community resilience that is based on the concept of green infrastructure and maintaining the balance between human development and existence of nature.

For further information  
**Máster d'Arquitectura del Paisatge -DUOT - UPC**

T: + 34 93 401 64 11 / +34 93 552 0842  
Contact via email at: [biennal.paisatge@upc.edu](mailto:biennal.paisatge@upc.edu)

**Máster d'Arquitectura del Paisatge -DUOT - UPC**  
ETSAB- Escola Tècnica Superior  
d'Arquitectura de Barcelona  
Avenida Diagonal, 649 piso 5  
08028 Barcelona-Spain

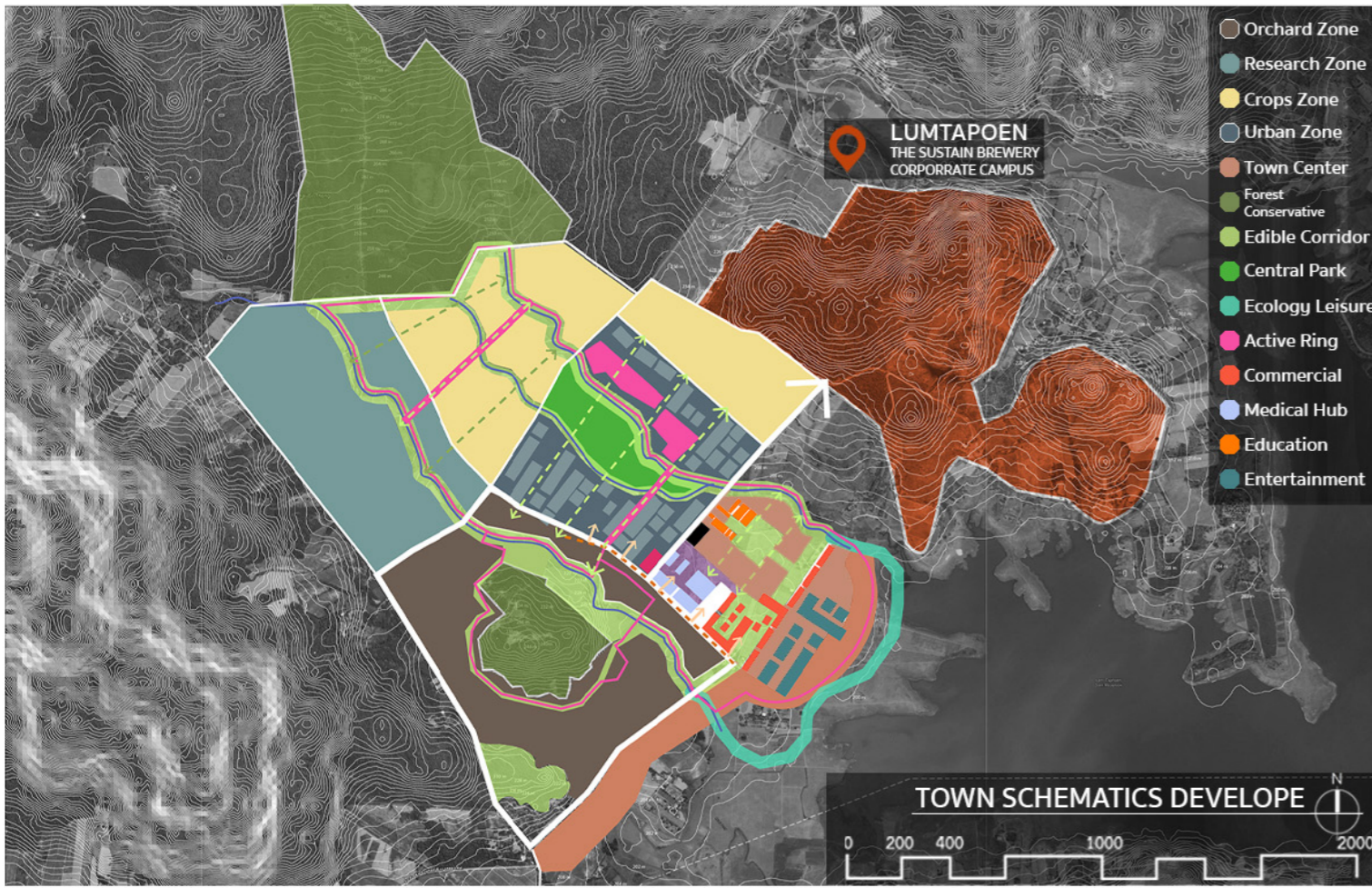


# CLIMATE CHANGE AGAIN

11th International Biennial Landscape Barcelona

Barcelona September 2020  
SCHOOL PRIZE

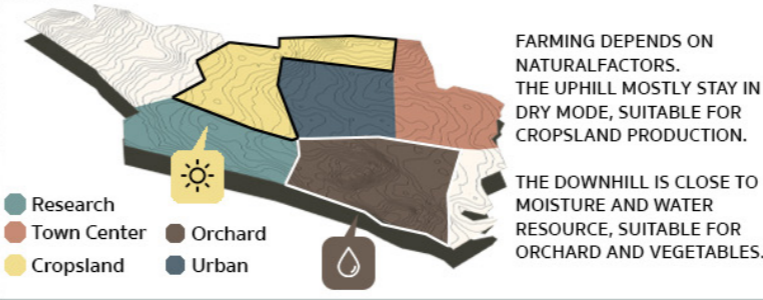
# SCHEMATIC DEVELOPE



# SCHEMATIC DEVELOPE LAYER



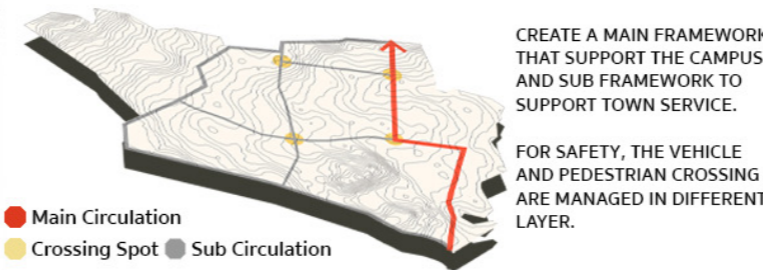
## ZONING



## PHYSICAL ACTIVITY



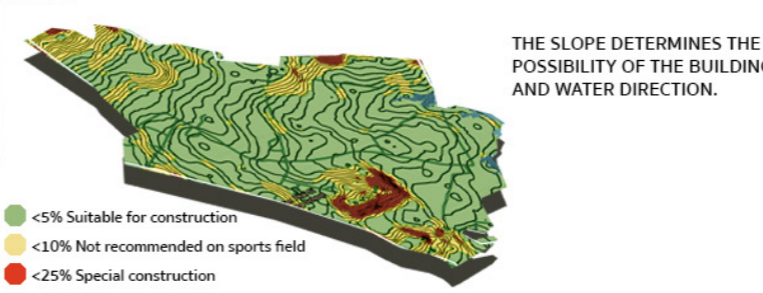
## FRAMEWORK.



## HYDROLOGY



## SLOPE



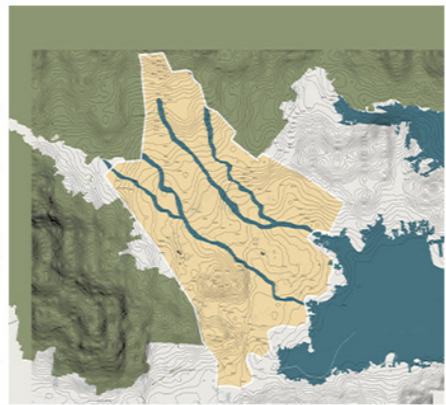
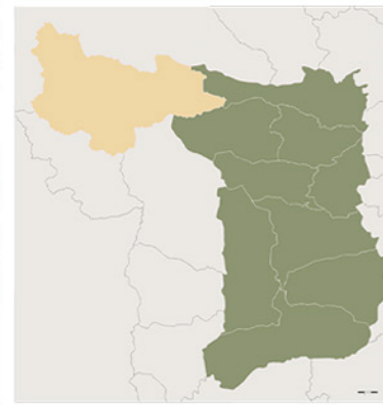
## GREEN SYSTEM



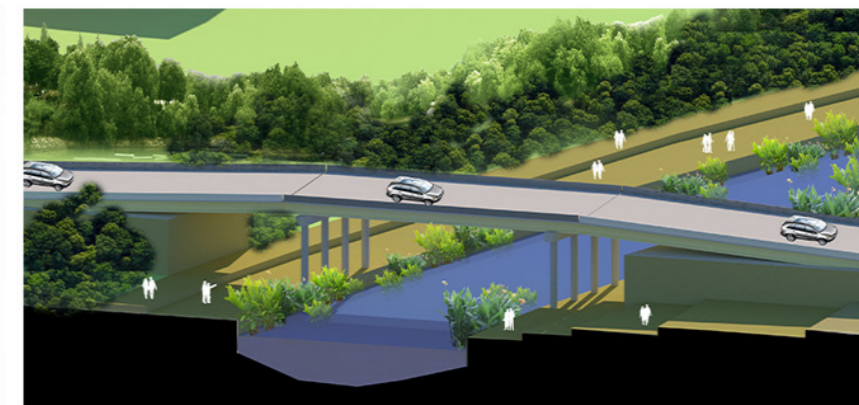
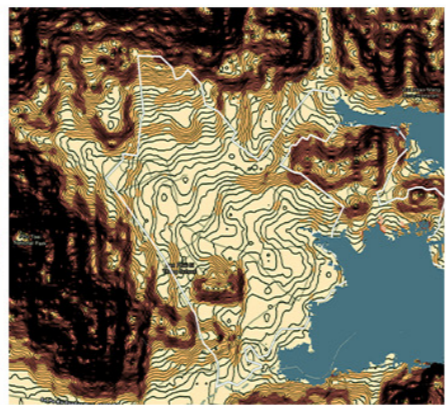
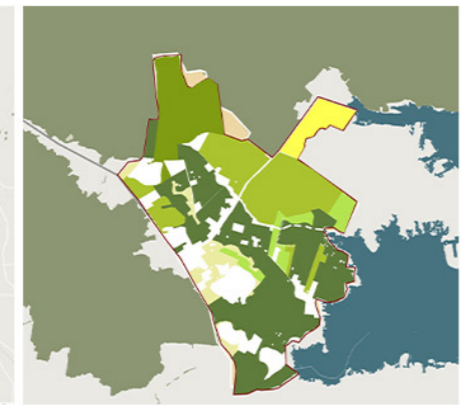
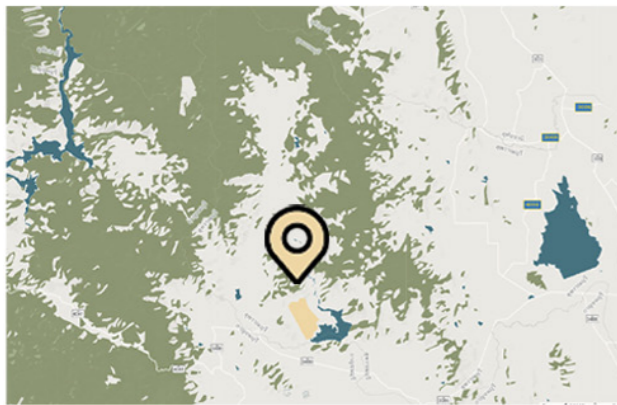
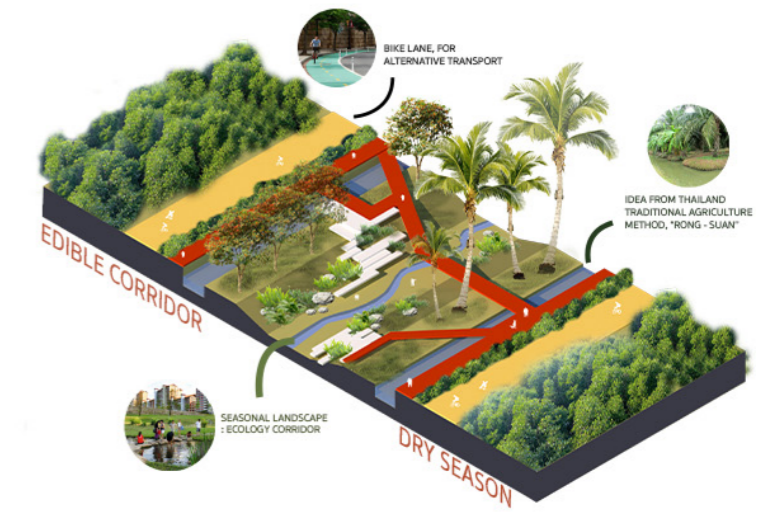
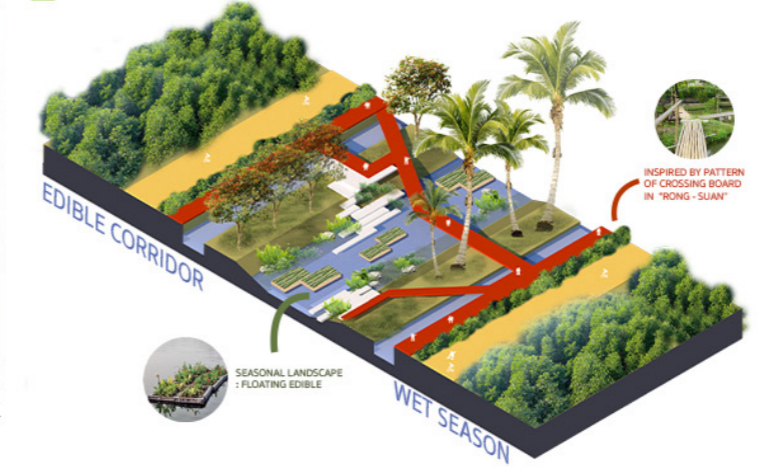
## LOCATION



## ANALYSIS



## EDIBLE CORRIDOR DIAGRAM



LAYER OF PEDESTRIAN AND VEHICULAR CROSSING SPOTS FOR SAFETY, THE VEHICLE AND PEDESTRIAN CROSSING ARE MANAGED IN DIFFERENT LAYER.

# ORCHARD VILLAGE



ORCHARD VILLAGE MASTER PLAN

## ORCHARD VILLAGE

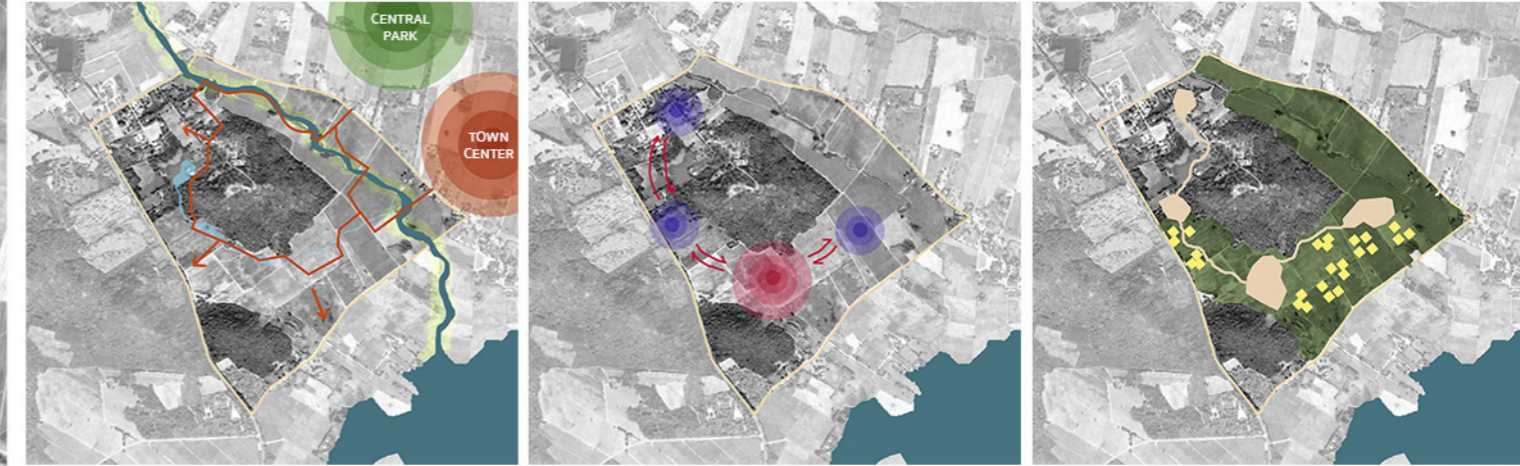
AREA : 1,092,800 SQM.  
 LOCATION : EATWELL LIVEWELL DISTRICT, DANCHANG, THAILAND

## WHAT WE PRODUCE ?

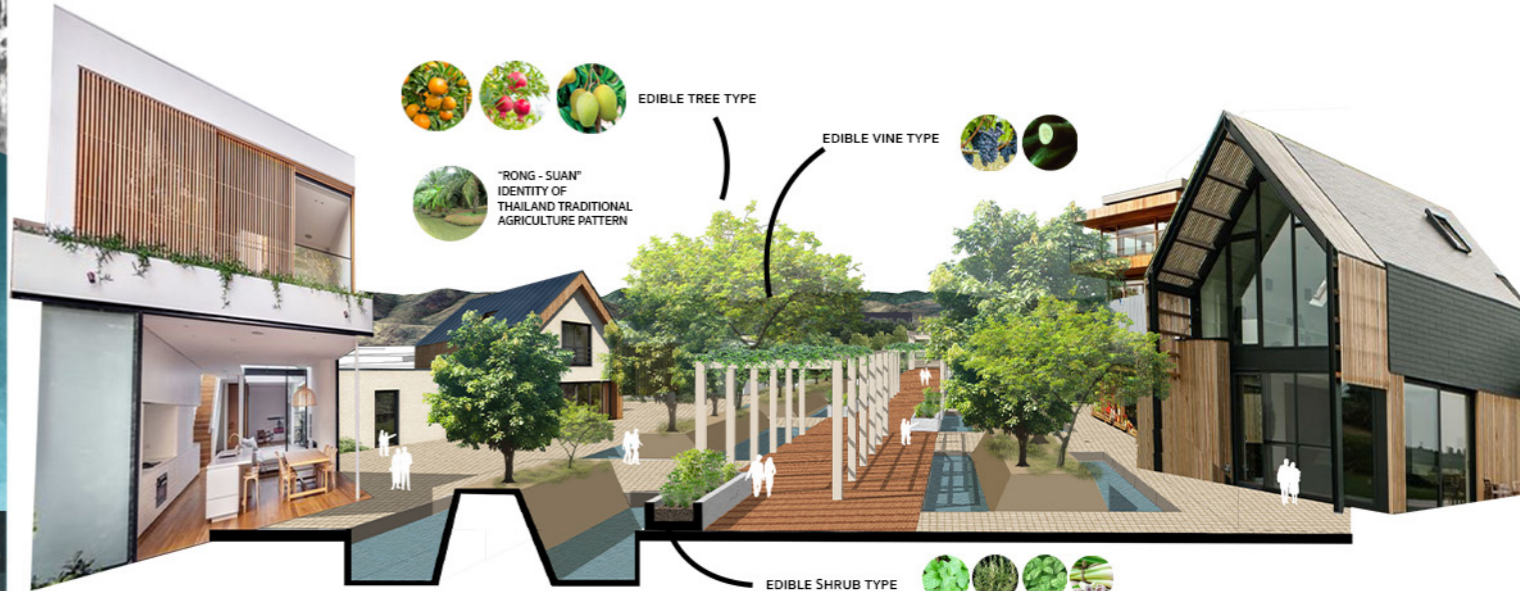
THE MOISTURE AND RICH IN WATER RESOURCE MAKES THIS LAND SUITABLE FOR AGRICULTURE.

THIS VILLAGE WILL PRODUCE SEASON INGREDIENT FOR CORPORATE CAMPUS AND DAILY EDIBLE TO SUPPLY THE NEED OF POPULATION IN THE TOWN

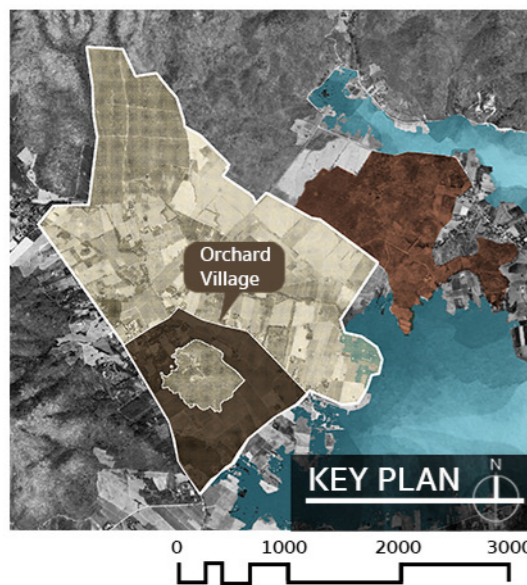
## STRATEGIES



PEDESTRIAN IS THE FIRST CRITERIA THAT CONSIDERED IN DEVELOPING COMMUNITY NODE AND NATURAL  
 EACH NODE HAS DIFFERENT FUNCTION TO CREATE THE SPACE MOVEMENT AND EXPAND  
 PLOT AND HOMESTEAD ARE COMBINED AND RELATED PLOT IS A PART OF LIFE THAT NOURISH PEOPLE



1 VILLAGE ENTRANCE THE GATEWAY TO THE VILLAGE OF INTEGRITY AND AGRICULTURE TURNS THE ELEMENTS AND UNIQUENESS OF THAILAND AGRICULTURE INTO LANDSCAPE DESIGN TO ENCOURAGE WALKING AND PROMOTE THAILAND IDENTITY



- 1 VILLAGE ENTRANCE
- 2 COOPERATIVE FIELD
- 3 PRODUCTION COOPERATIVE
- 4 SHOPHOUSE
- 5 HOMESTEAD
- 6 CREEKSIDE HOUSING
- 7 NEIGHBORHOOD CENTER
- 8 RUMTAPOEN CREEKFRONT CUISINE & BISTRO
- 9 RUMTAPOEN POPUP STORE
- 10 BAAN PAI SEE THONG ELEMENTARY SCHOOL
- 11 RESEARCH DEMONSTRATION FIELD & OFFICE
- 12 EDIBLE CORRIDOR



### SITE POTENTIAL



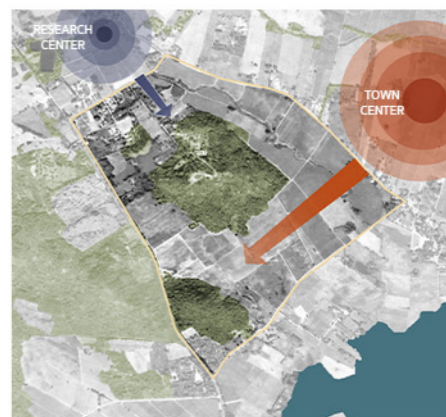
FOOTHILL HAS A GREAT POTENTIAL TO COLLECT WATER FOR SUSTAIN IRRIGATE FARMLAND



WATER CHANEL FROM UPHILL HAS THE POTENTIAL TO DEVELOPE INTO EDIBLE CORRIDOR TO INCREASE THE QUALITY OF ACCESS



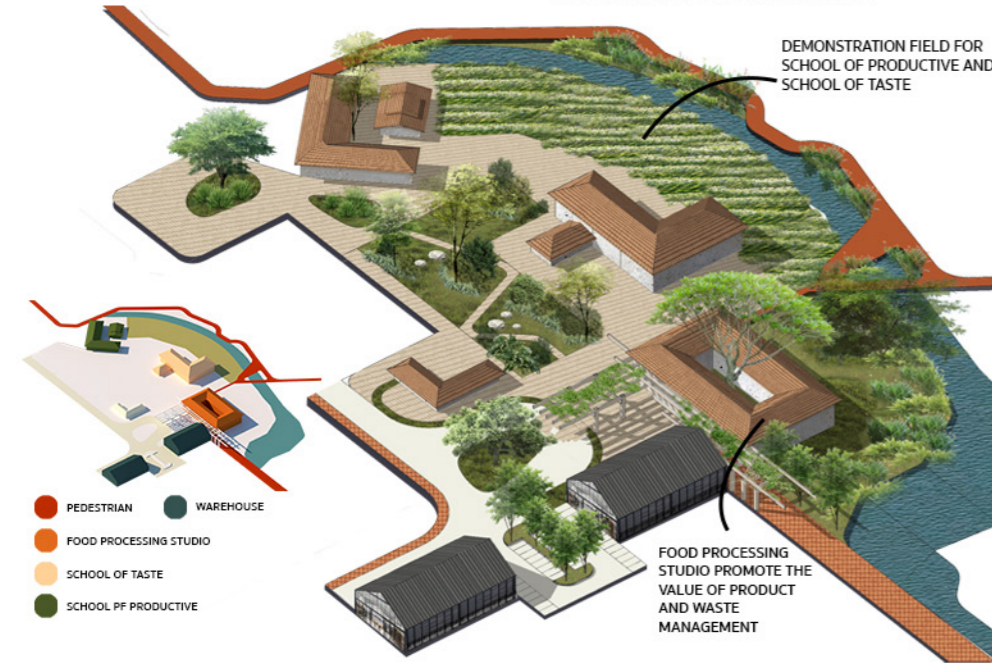
MAIN RURAL ROAD BRINGS MORE TOURIST WITH ATTRACTIVE DESIGN THIS WILL ALSO STIMULATE THE ECONOMY



THE AXIS OF TOWN CENTER AND RESEARCH CENTER



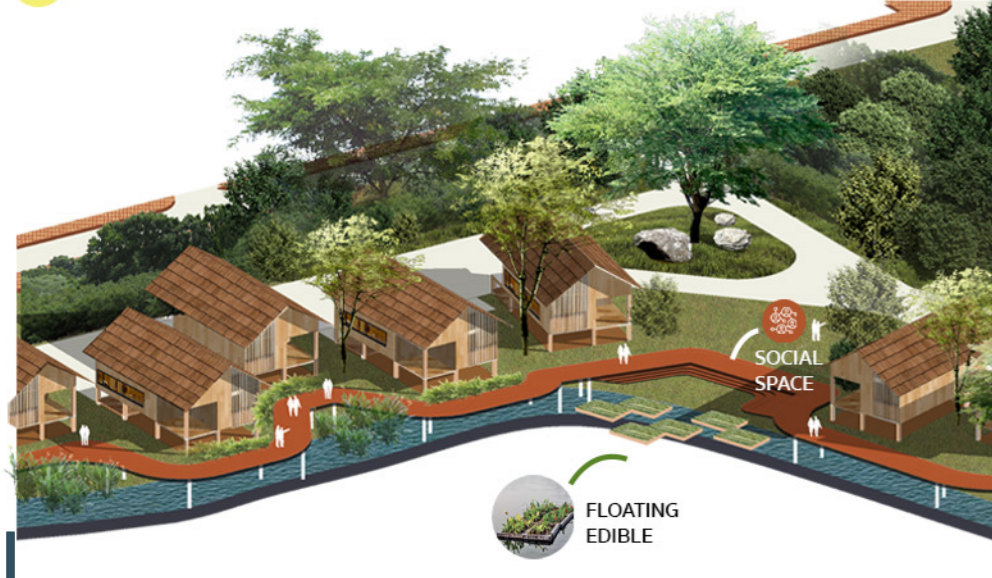
### 3 PRODUCTION COOPERATIVE THIS ZONE HELPS ORGANIZE PRODUCTS AND KNOWLEDGE OF FARMER



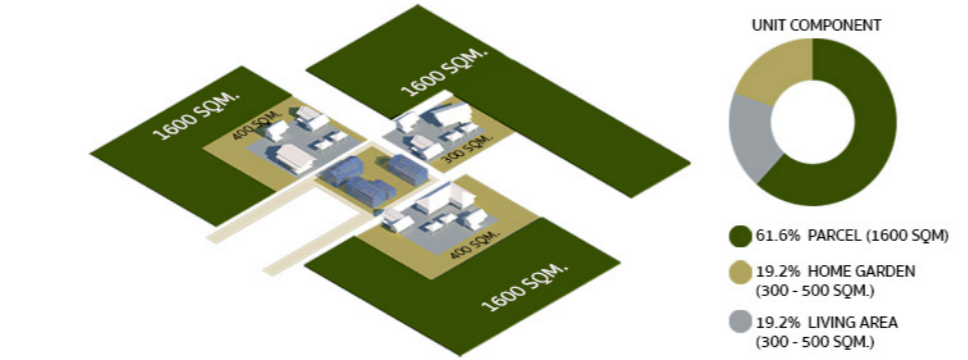
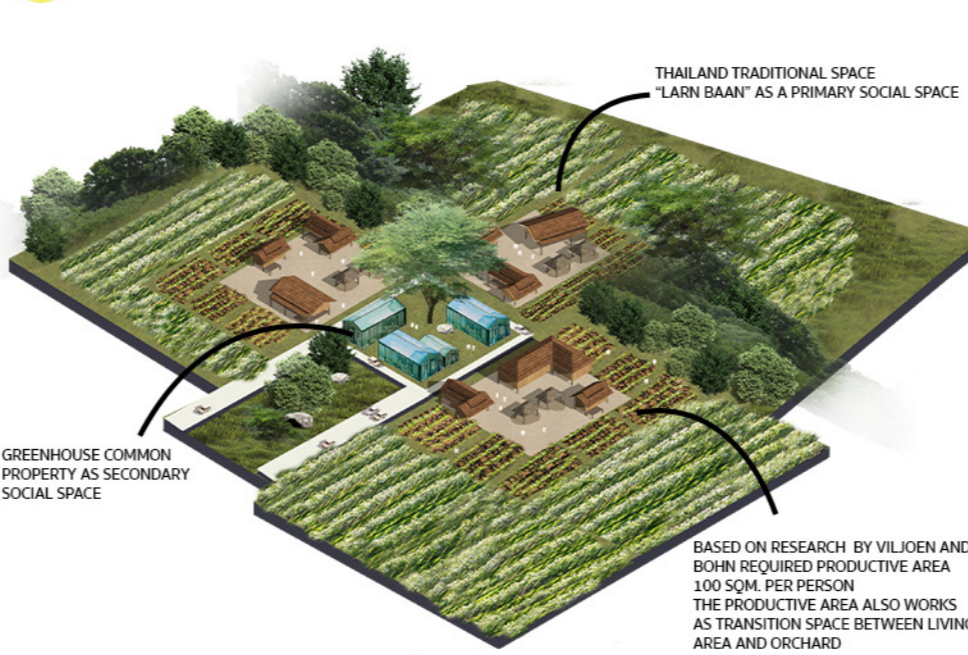
### 4 SHOPHOUSE ACTIVATE SPACE BY COMMERCIAL



### 6 CREEKSIDE HOUSING



### 5 HOMESTEAD COMBINE PRODUCTIVE PLOT WITH LIVING SPACE



HOME GARDEN (DAILY EDIBLE)	ORCHARD (FOR FLAVOR SPIRITS)		
	SUMMER	RAIN	WINTER
CHILLI COLLARD GREEN CHINESE CABBAGE CUCUMBER SPINACH MINT ROSEMARY BASIL LEMONGRASS	MANGO GRAPE	ORANGE PROMEGRANATE COCONUT BANANA	PINEAPPLE PASSION FRUIT

### HOMESTEAD HOUSING HAVE MORE HUMAN RELATION FROM PUBLIC SPACE AT VARIOUS LEVEL



### 12 EDIBLE CORRIDOR ENHANCE PHYSICAL MOVEMENT & ALTERNATIVE TRANSPORT



### 7 NEIGHBORHOOD CENTER ACT AS GATHERING SPACE AND COMMUNICATE AREA



### 9 LUMTAPOEN SOUVENIOR & COMMERCIAL ENHANCE TOURISM & STIMULATE THE ECONOMY IT ALSO HELPS SUPPORT CAMPUS PRODUCT AND BRANDING