



Country / City Suphanburi , Thailand
University / School King Mongkut's Institute of Technology Ladkrabang
Academic year 2019/2020
Title of the project Hippie Life : Agriculture in Traditional Music Township
Authors Pannarai Mhuenpannarai

TECHNICAL DOSSIER

Title of the project	Hippie Life : Agriculture in Traditional Music Township
Authors	Pannarai Mhuenpannarai
Title of the course	Master Planning/Regional Planning
Academic year	2019/2020
Teaching Staff	Munggorn Chaijaroenmatitre ,Worasak Luangsuwan
Department/Section/Program of belonging	Landscape Architecture/BLA
University/School	King Mongkut's Institute of Technology Ladkrabang



Written statement, short description of the project in English, no more than 250 words

Being known as a city with many traditional music genres related to agrarian society and a long history of traditional folk music, Suphanburi aims itself to be one of music metropolitans in UNESCO Creative City Network. Located in the agricultural area of Suphanburi where the folk wisdoms and the traditional music still influence people in the present days, the project introduces a "traditional music town" as the main theme of the community redevelopment in order to preserve its unique identity and reach the vision goal of Suphanburi. The village formerly grew rice, but currently relies mainly on sugarcane monoculture, which is typically cultivated by open burning, causing the environment to suffer with massive amounts of pollutions and contaminants. The lands are heavily destroyed to have more monoculture farming plots. The smog from the cultivation becomes one of Thailand's major environmental problems. At the same time, the villagers also confront economic and social challenges from the oversupply of sugarcane and the yield decline. To help mitigate the issues, this proposal aims to shift the community from monoculture farming practice into eco-friendly agriculture, while enhancing social bonding between communities through the suitable space for traditional performances. It proposes the cooperative living and farming that provide landscape as shared common spaces for the community, by recluster the village to promote the wellbeing of people. This will create strong self-sufficient society, as well as the harmonious coexistence between human and nature, while preserve the local folk cultures and make people proud of their home.

For further information

Máster d'Arquitectura del Paisatge -DUOT - UPC

T: + 34 93 401 64 11 / +34 93 552 0842

Contact via email at: biennal.paisatge@upc.edu

Máster d'Arquitectura del Paisatge -DUOT - UPC

ETSAB- Escola Tècnica Superior
d'Arquitectura de Barcelona
Avenida Diagonal, 649 piso 5
08028 Barcelona-Spain



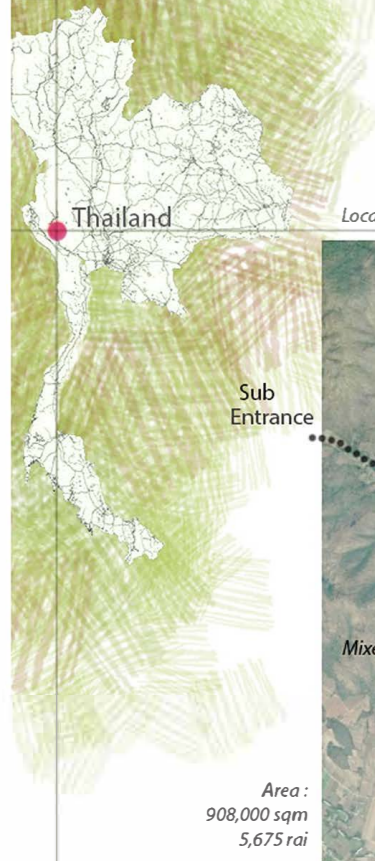
CLIMATE CHANGE AGAIN

11th International Biennial Landscape Barcelona

Barcelona September 2020

SCHOOL PRIZE

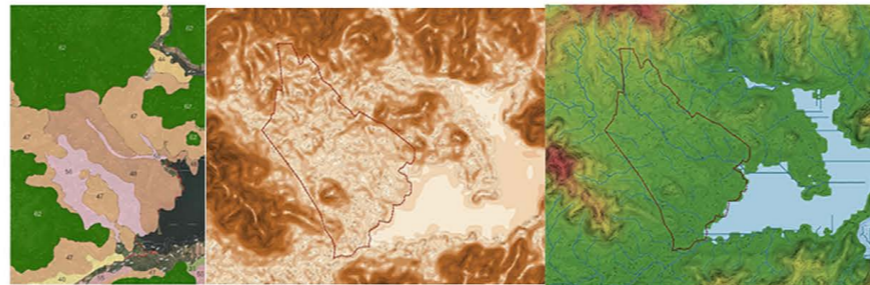
Hippie Lamtapern local music inspiration town



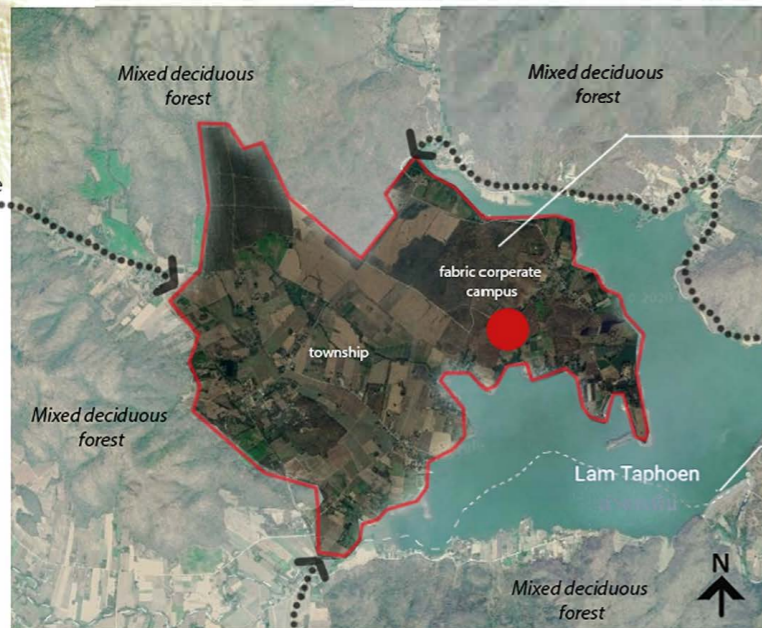
Location 14.7936, 99.3996 Ong Phra, Dan Chang District, Suphan Buri 72180

Site terrain

Surrounding by hill and mountain next to the large lake that collect water form upper north national park.



Landuse Topography Water & slope



Local industry Buddie Fabric Factory

The Buddie Fabric Factory campus is as an anchor for development with more populations.

New economic crop bamboo hemp



Site story

The project is at the Lamtapern reservoir, Dan Chang district on the west side of Suphanburi. Every villager works in agricultural sector producing cane, cassava, taro, and livestock farming such as cow, chicken, duck, and goat in their lands.

Town Vision

- 1 Sustainable city
- 2 Creative community
- 3 Eco-friendly life

This town can create self-sufficiency resource that are not harmful to ecology and nature it also create happiness to people.



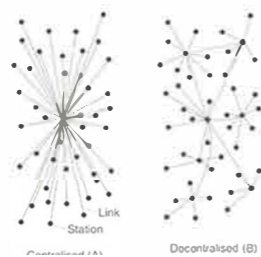
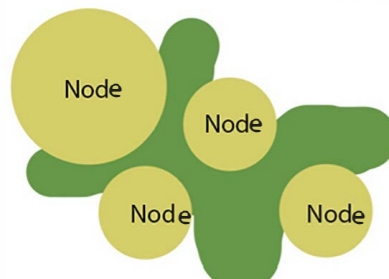
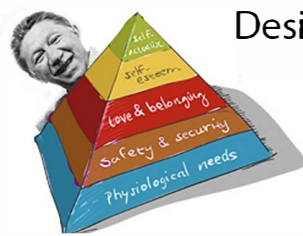
GROW OPPORTUNITY COMMUNITY GREENER

"TOGETHER WITH LOVE"
"BE FREE FROM CAPITALIST SOCIETY"

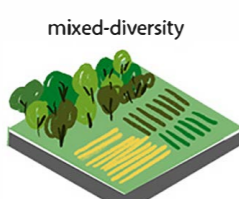
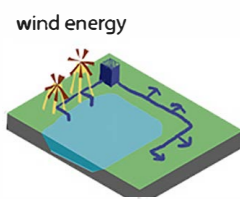
Design strategy

Planning modular residential lots from Maslow's pyramid

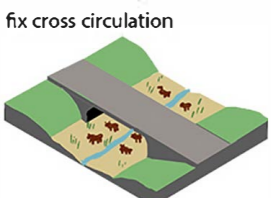
Hippie Lifestyle This concept represents the idea of living that resist capitalism and unsustainable industry. It focuses on self-sufficiency and the way of love in life and nature.



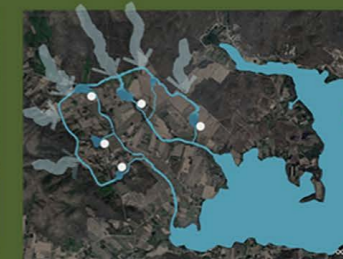
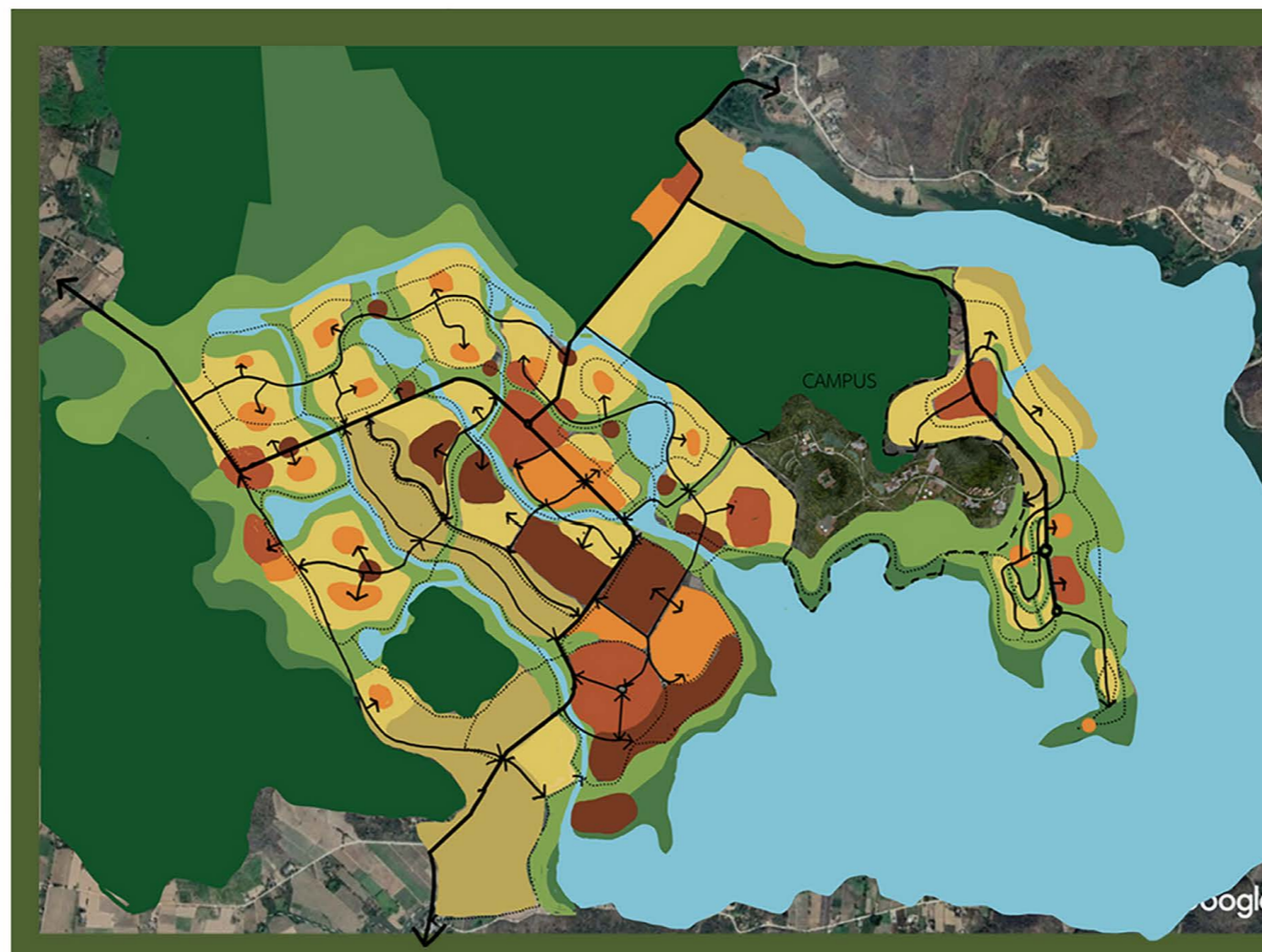
Decentralize node to decrease transportation by car



Different node character



Merge node to create bigger public space



water body and water manange station



Center network
● green link
● 400 meters
● 800 meters

Town system diagram

- Animal Corridor
- Green Corridor
- Reserve
- Forest
- Water Body
- Farm Land
- Large Lot Residential
- Higt Residential
- Public Node
- Road 12.00 m.
- Road 8.00 m.
- Bike Route /
- Walk ways
- Entrance





Agricultural district

Potential - fertile land with local wisdom

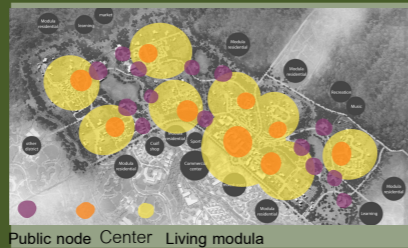
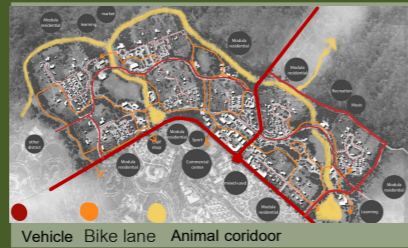
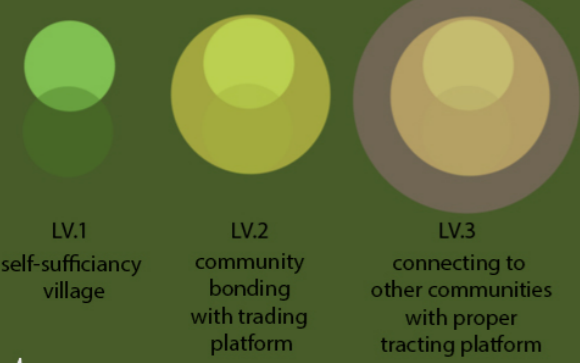
Issue
 - monoculture farming that is harmful for the environment
 - lost social connection between communities



Farmer + Non-Farmer

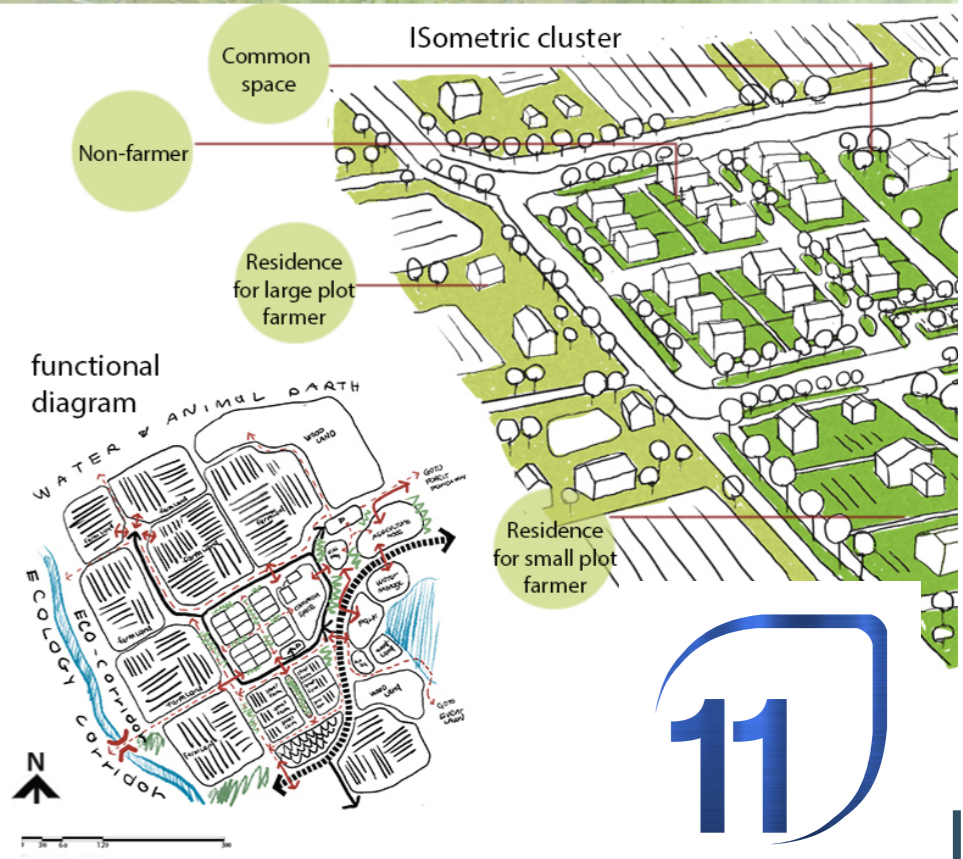
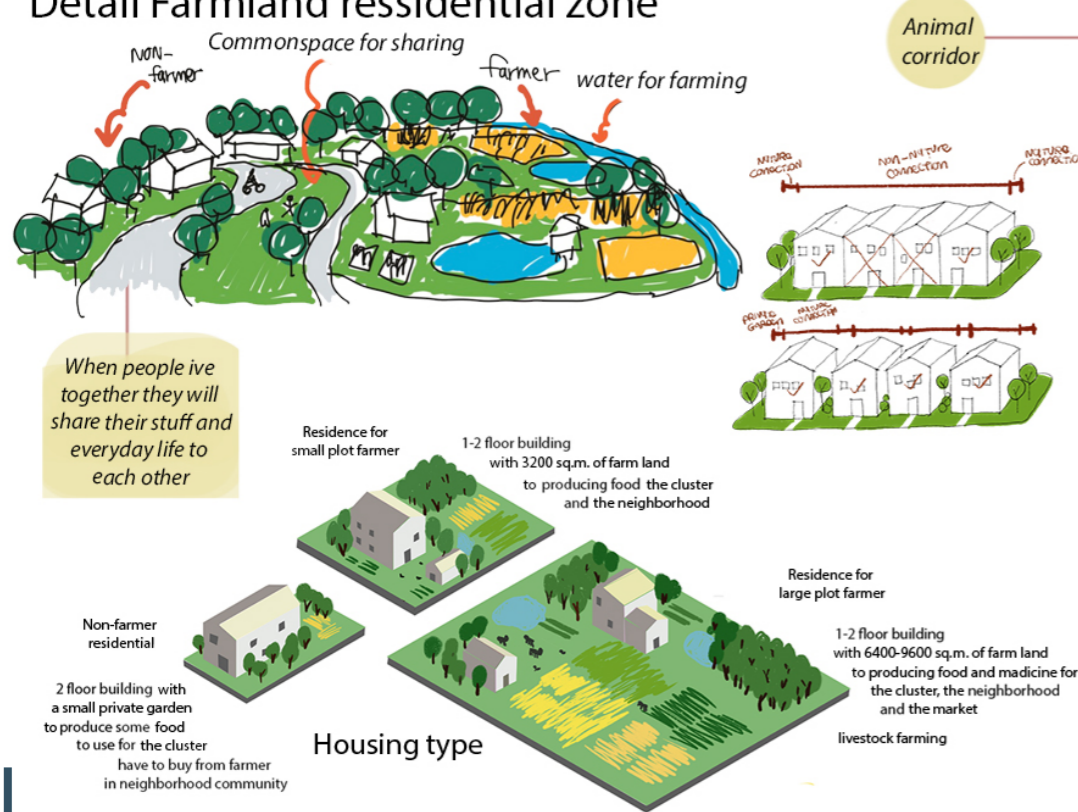
Local people = farmer
 Non-local people = campus workers/
 traveler/new farmer

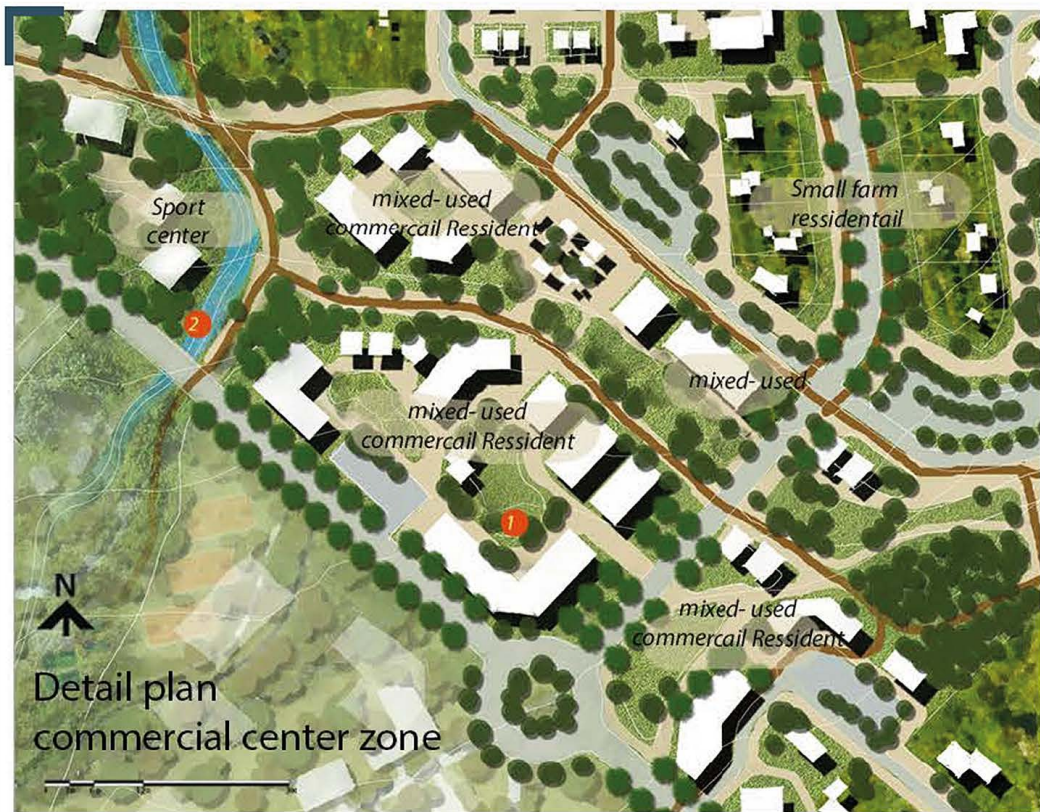
Modula's cluster level



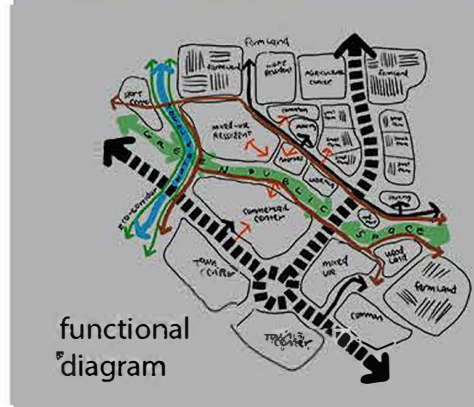
MASTER PLAN

Detail Farmland residential zone





Ecological design



Road type

