

Country / City THAILAND, Phetchaburi
University / School King Mongkut's Institute of Technology Ladkrabang
Academic year 2019/2020
Title of the project Tung Na-Pa Tan: The Folkway Learning Center for Cultural Landscape of Rice field and Sugar Palm Tree, Phetchaburi
Authors Sukrit Chongthavornvasana

TECHNICAL DOSSIER

Title of the project	Tung Na-Pa Tan: The Folkway Learning Center for Cultural Landscape of Rice field and Sugar Palm Tree,
Authors	Phetchaburi Sukrit Chongthavornvasana
Title of the course	BLA/Landscape Architecture Thesis
Academic year	2019/2020
Teaching Staff	Phonkrit Kritayopas
Department/Section/Program of belonging	Landscape Architecture/BLA
University/School	King Mongkut's Institute of Technology Ladkrabang



Written statement, short description of the project in English, no more than 250 words

Harvesting rice fields alternated with sugar palm trees is the traditional practice for farmers in Phetchaburi Province to earn their living throughout the year. Rice fields with toddy palm trees on the ridges, "Tung Na - Pa Tan" in Thai, became the distinctive landscape identity of Phetchaburi Province for over centuries and has made Phetchaburi famous for its palm sugar. The unique heritage of Phetchaburi has subsided substantially after the rapid urban developments in the past few decades.

The project focuses on developing strategies to create a sustainable future for "Tung Na - Pa Tan" and the farmers of Phetchaburi, as well as educating the local wisdom through the landscape and creating the ecological balance between the farmlands and native species in the ecosystem. It proposes a public space to maintain the social bonding in the community, an educational area to pass on the local heritage to the young generations, and a place to explore the new technologies for the future of traditional agriculture. The project integrates the cultural heritage of Phetchaburi, and the study of community land-use patterns, agricultural plots, topography, and transportation. Derived from the existing pattern of rice field, through pictures of Cultural landscapes, the design illustrates the unique characteristics of sugar palm trees in the rice fields in the fertile lands of Phetchaburi from every perspective. "Tung Na - Pa Tan", the cultural heritage of Phetchaburi will always maintain its prestige as a priceless legacy to people in Phetchaburi from now on.

For further information

Máster d'Arquitectura del Paisatge -DUOT - UPC

T: + 34 93 401 64 11 / +34 93 552 0842

Contact via email at: biennal.paisatge@upc.edu

Máster d'Arquitectura del Paisatge -DUOT - UPC

ETSAB- Escola Tècnica Superior

d'Arquitectura de Barcelona

Avenida Diagonal, 649 piso 5

08028 Barcelona-S pain



CLIMATE CHANGE AGAIN

11th International Biennial Landscape Barcelona

Barcelona September 2020

SCHOOL PRIZE



Design concept

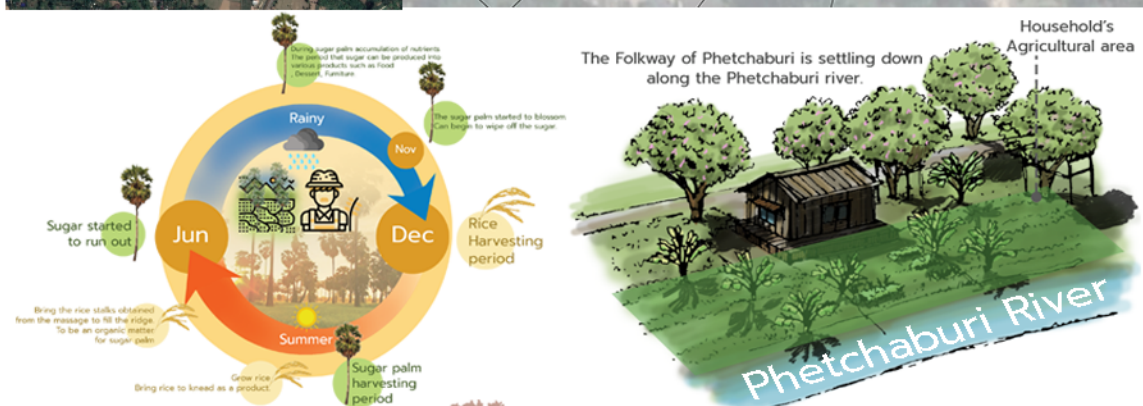


Site Location

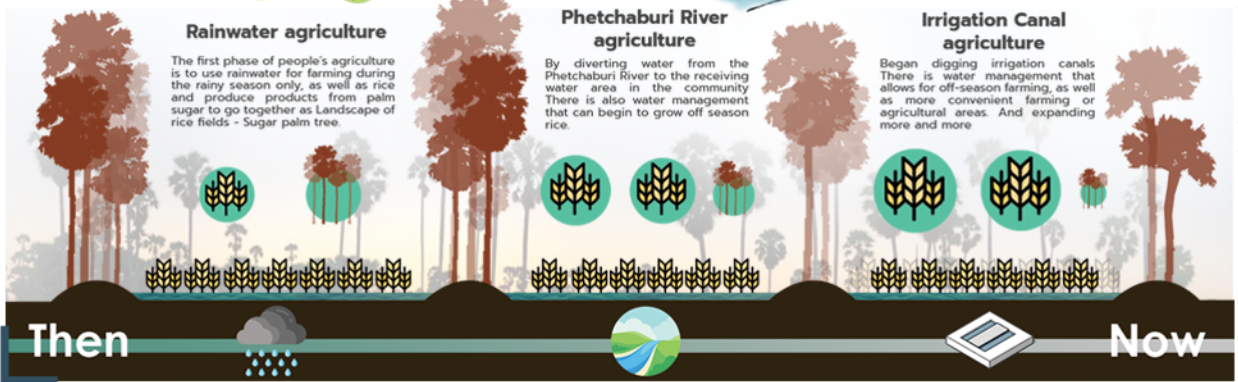


Tham Rong, Ban Lat District, Phetchaburi City, THAILAND
Total area : 48.95 acre

Master plan



The Folkway of Phetchaburi is settling down along the Phetchaburi river.



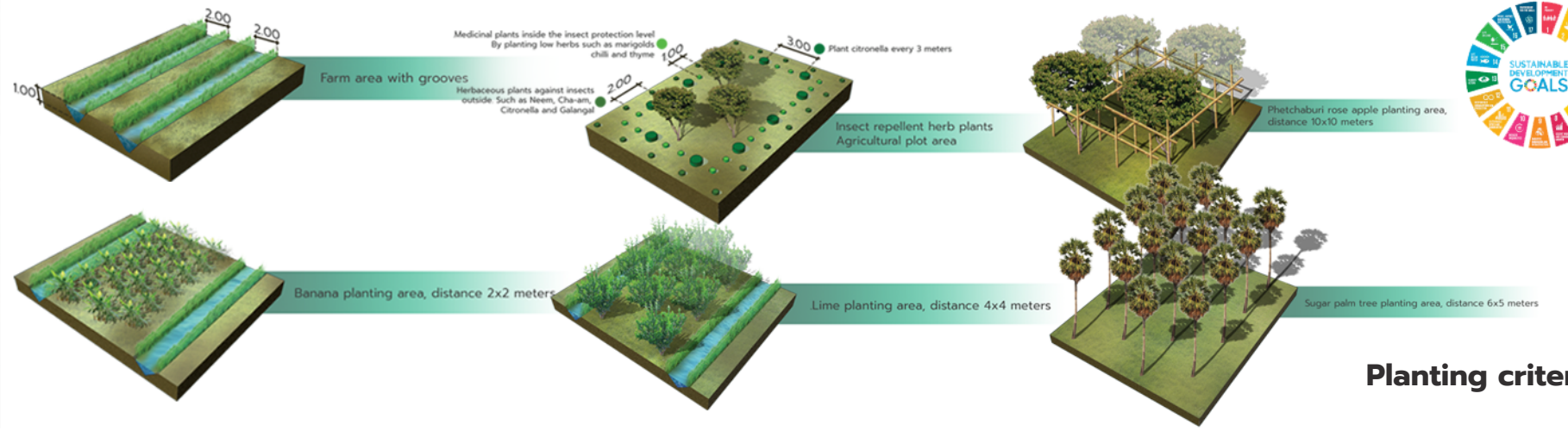
Site Selection

The site's location is selected from the area which still has inherited forms of agriculture, "Rice field and Sugar palm tree" to the present day, with many bamboo groves which local farmers use the stick to tie up with the palm trees for harvesting sugar. It is a part of the original settlement of Phetchaburi along Phetchaburi River.



NEW WAYS of harvesting sugar for the Phetchaburi folkway





Public space & Planting material / product exchange center zone

- Public space for Community
- Planting material & product exchange for farmer and community
- Agricultural areas along the banks of the Phetchaburi River
- Household's Agricultural area for sustainable living within the community

