

Country / City Chile / Valparaiso

University / School Universidad de Valparaiso

Academic year 6th year, 12th Semester

Title of the project Lota Green Cultural Park | Former industrial facility

Authors Fabián Orrego Tapia



## TECHNICAL DOSSIER

Title of the project	LOTA GREEN CULTURAL PARK   Former industrial facility
Authors	Fabian Orrego Tapia
Title of the course	Taller de Titulación 2
Academic year	6th year , 12th Semester
Teaching Staff	Cristian Rojas
Department/Section/Program of belonging	Escuela de Arquitectura, Facultad de Arquitectura
University/School	Universidad de Valparaiso



In the 1960s Robert Smithson, one of the forerunners of Land art, began to talk about entropy in relation to the dissolution of energy inherent in all the elements, including landscape. In this way the entropic landscape is discovered as that chaotic and residual, like the "other" landscape that now acquires a qualitative value, are spaces residuals that had not been contemplated from an aesthetic filter until now. Although the entropic aspect can be found in different objects, works or installations, different scales, in this work the backbone will be the landscape.

The project.- | After the debacle of the coal industry in the commune of Lota, the city was plagued with a large number of industrial remains scattered throughout the city.

The intervention considers, specifically, the reinterpretation of the corresponding ruins to the facilities of the national coal company (ENACAR) and the Brick Factory LOTA GREEN and proposes a large Cultural Park.

The project provides a scenic route through the recognized notable fragments in the sector and also recovers the large pre-existing structures to accommodate new program for the park. Simple operations attempt to facilitate comfortable movement between the ruins, promoting a closer experience and sensory between who walks the park and the obsolescence, thus managing to merge the project, with the entropic landscape, without competing with the pre-existence, but very on the contrary, always putting it in value.

For further information  
Máster d'Arquitectura del Paisatge -DUOT - UPC

T: + 34 93 401 64 11 / +34 93 552 0842  
Contact via email at: [biennal.paisatge@upc.edu](mailto:biennal.paisatge@upc.edu)

Máster d'Arquitectura del Paisatge -DUOT - UPC  
ETSAB- Escola Tècnica Superior  
d'Arquitectura de Barcelona  
Avenida Diagonal, 649 piso 5  
08028 Barcelona-Spain



# CLIMATE CHANGE AGAIN

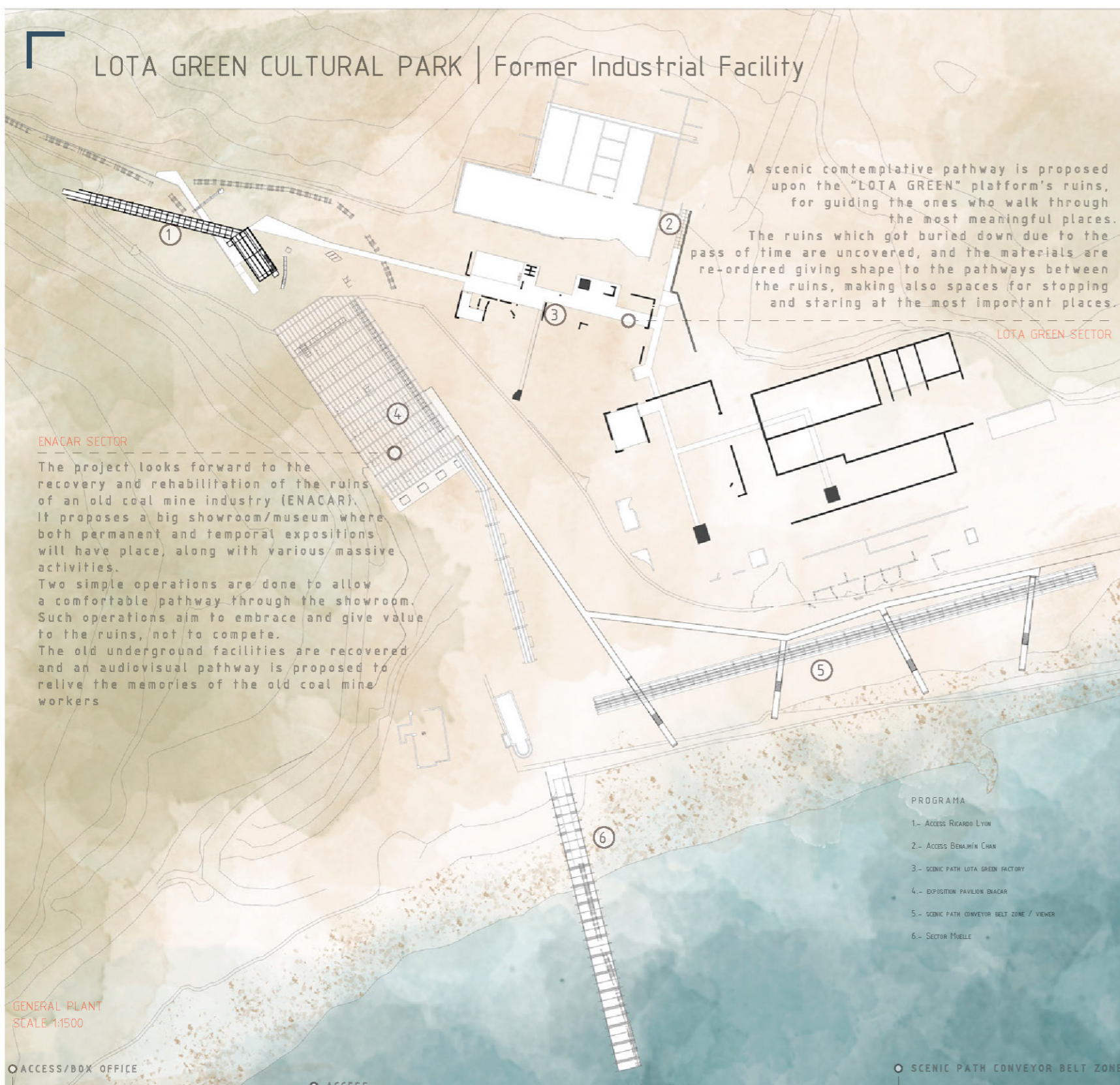
11th International Biennial Landscape Barcelona

Barcelona September 2020

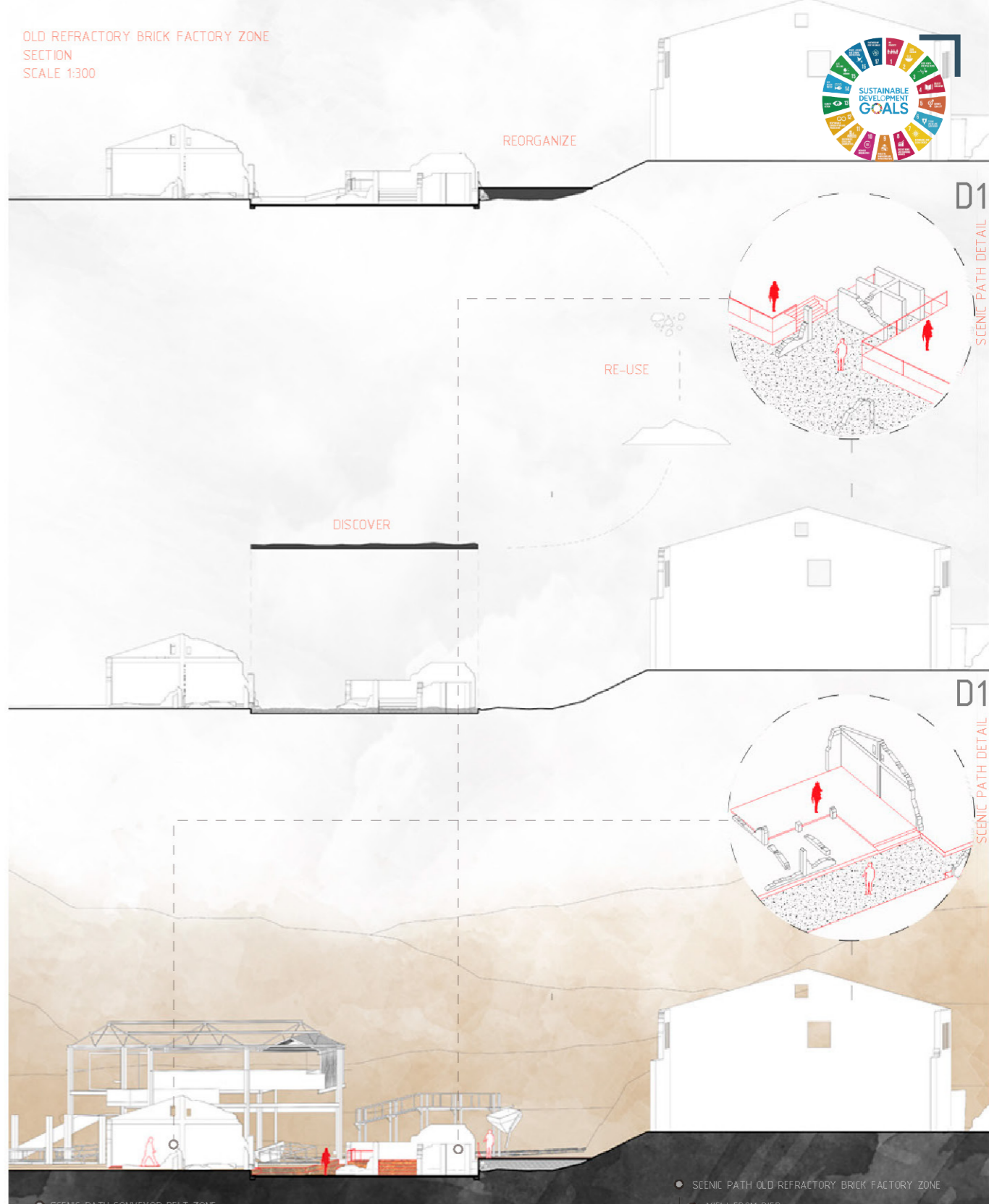
SCHOOL PRIZE



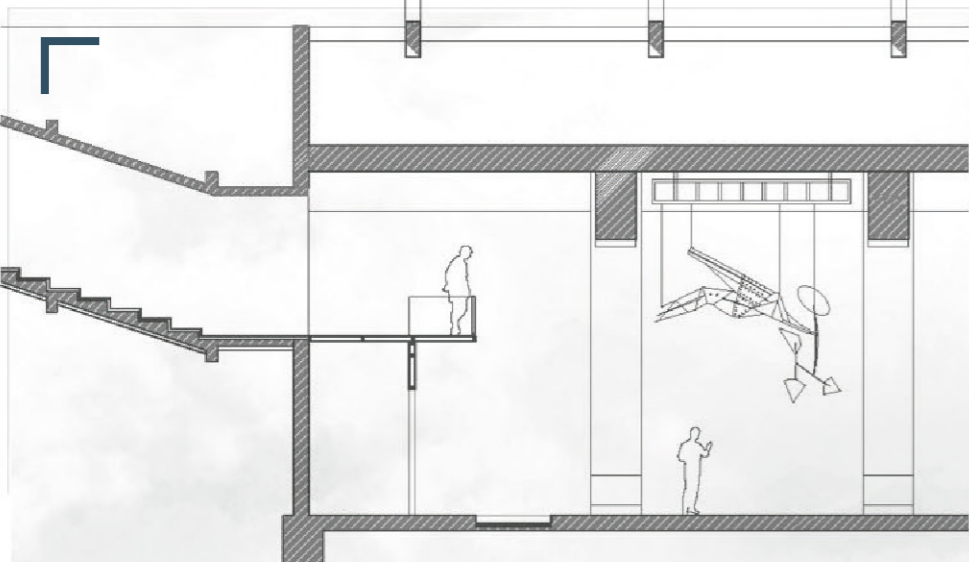
# LOTA GREEN CULTURAL PARK | Former Industrial Facility



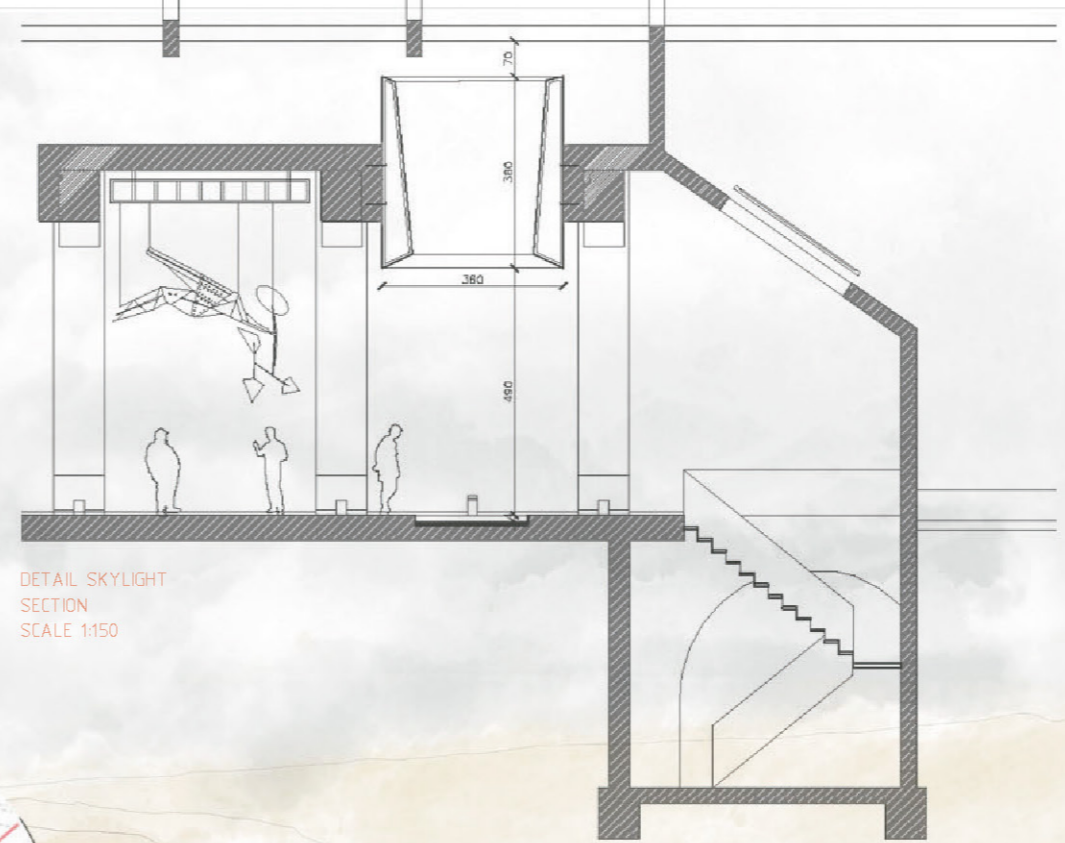
OLD REFRACTORY BRICK FACTORY ZONE  
SECTION  
SCALE 1:300



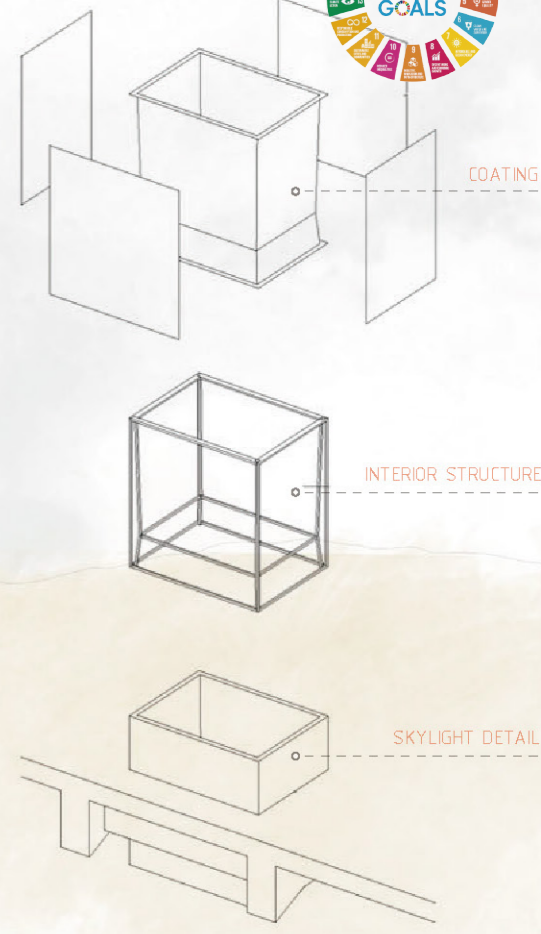




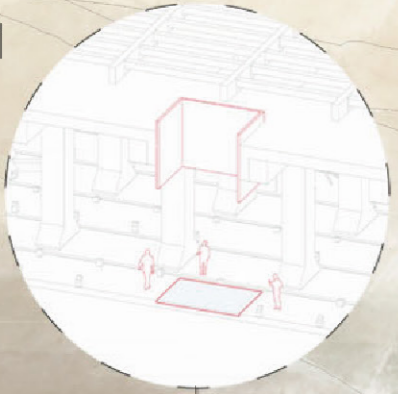
DETAIL SHOWROOM ACCESS  
SECTION  
SCALE 1:150



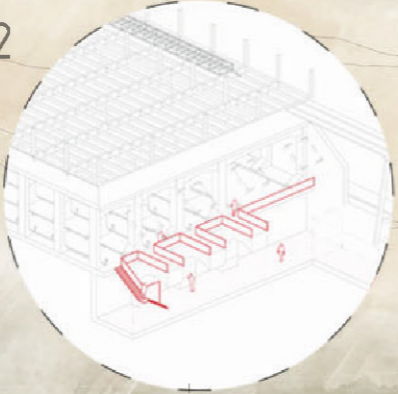
DETAIL SKYLIGHT  
SECTION  
SCALE 1:150



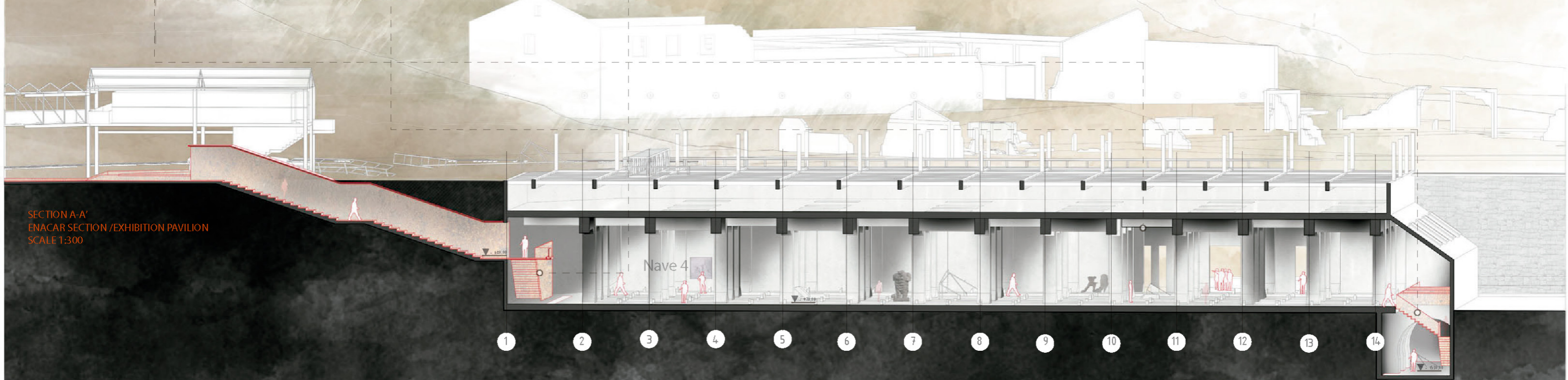
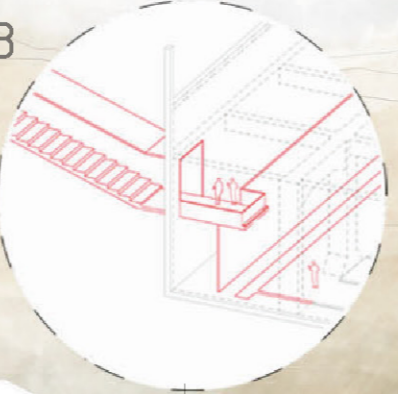
D1  
SKYLIGHT DETAIL



D2  
AV SHOWROOM ACCESS



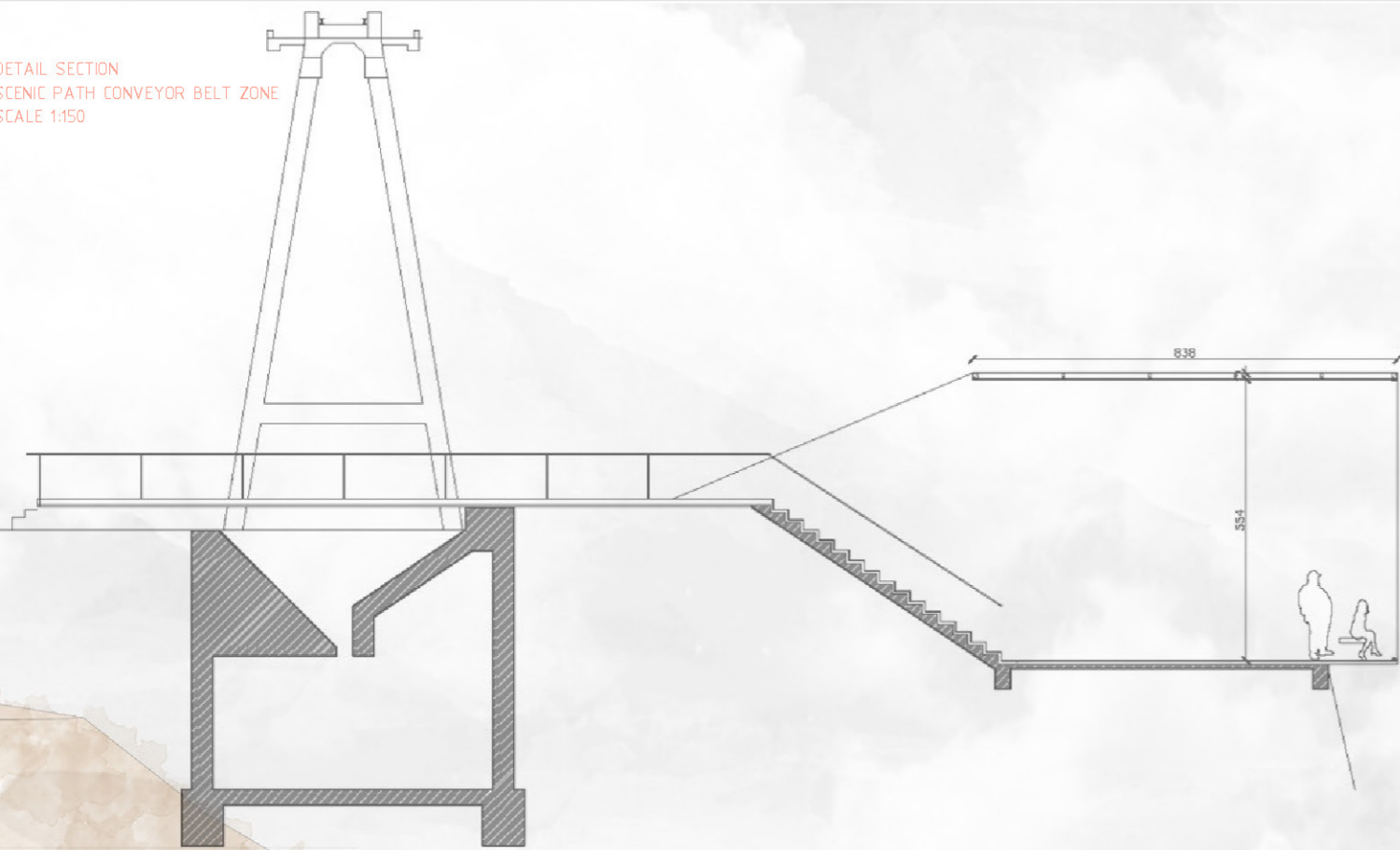
D3  
SHOWROOM ACCESS



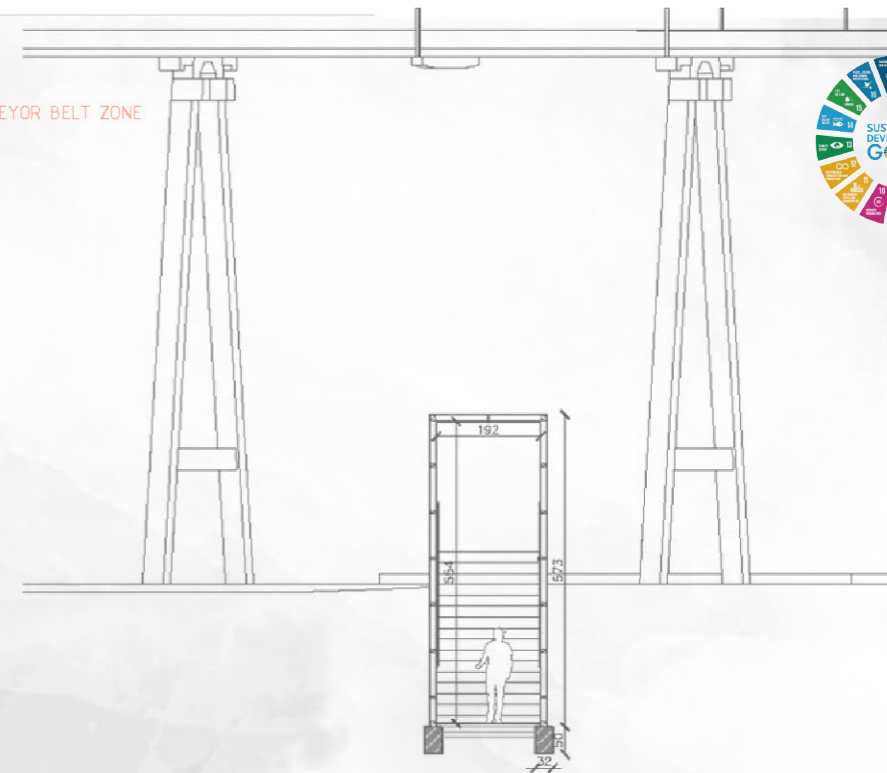
SECTION A-A'  
ENACAR SECTION / EXHIBITION PAVILION  
SCALE 1:300



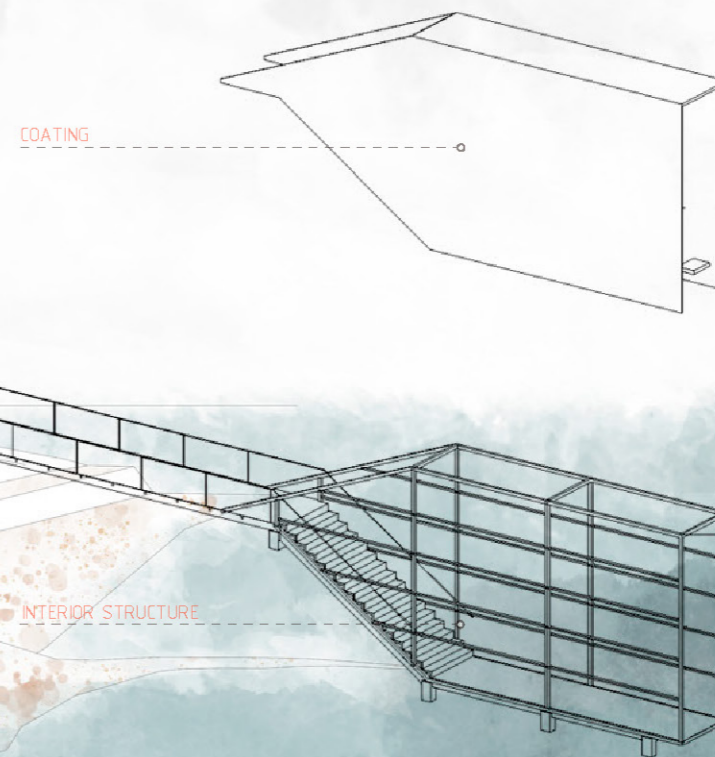
DETAIL SECTION  
SCENIC PATH CONVEYOR BELT ZONE  
SCALE 1:150



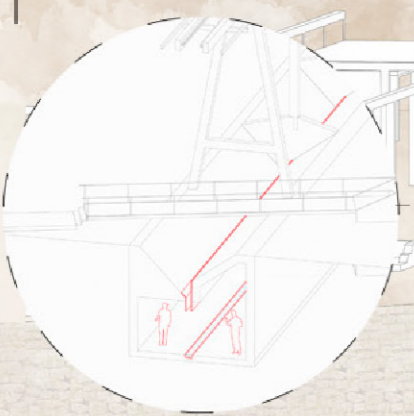
DETAIL SECTION  
SCENIC PATH CONVEYOR BELT ZONE  
SCALE 1:150



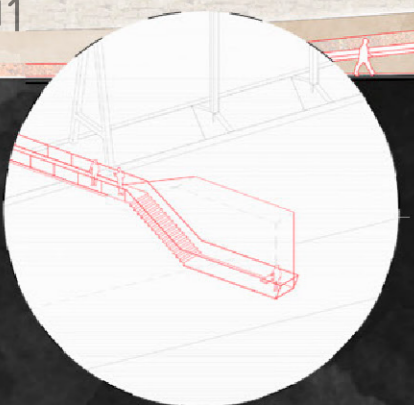
STRUCTURE ISOMETRIC SCHEME



D1  
SKYLIGHT DETAIL



D1  
SKYLIGHT DETAIL



SECTION B-B'  
CONVEYOR BELT ZONE  
SCALE 1:300

