



Country / City PALERMO, ITALY
University / School UNIVERSITY OF PALERMO / DEPARTMENT OF ARCHITECTURE
Academic year 2018 - 2019
Title of the project LAKESCAPE. A LANDSCAPE PROJECT FOR THE FRUITION OF LAKE POMA
Authors Alessandra Carolina LO DUCA

TECHNICAL DOSSIER

Title of the project	LAKESCAPE. A LANDSCAPE PROJECT FOR THE FRUITION OF LAKE POMA
Authors	Alessandra Carolina LO DUCA
Title of the course	MASTER'S DEGREE IN ARCHITECTURE
Academic year	2018 - 2019
Teaching Staff	Prof. Arch. Manfredi LEONE, Dr. Floriana DI LEONARDO
Department/Section/Program of belonging	ARCHITECTURE / MASTER IN ARCHITECTURE
University/School	UNIVERSITY OF PALERMO / DEPARTMENT OF ARCHITECTURE



This proposal aims to provide a landscape layout suitable for the fruition of Lake Poma, located in Partinico (Palermo, Sicily). Despite being a manmade creation, the lake that sprung up from the construction of the dam on the Jato river during the 60's has, over time, took on the morphology of a spontaneous landscape, losing its features of artificiality and developing its own ecosystem. An oasis, populated by a rich fauna and embedded in a lush flora. However, the lake has always been used as a mere water supply for the surrounding fields and nearby towns.

In spite of the efforts of a few locals and the desire of the younger generation to be able to use this hidden gem as a local outdoor resource, Lake Poma has never been through the process of being elevated from its "big puddle" status to semi-urban park.

The objective of this project is, therefore, to transform the lakefront and enhance the potential of the reservoir, working with the landscape in order to create a park that adapts to the natural changes of the lake (the water level is highly dependent on precipitation and water demand by the fields and towns) and is able to serve as a resource all year round. The project includes activities such as birdwatching, trekking, outdoor sports, as well as observation spots and towers, contemporary art installations – both on land and on the surface of the lake – and pedestrian paths suspended over the water.

For further information
Máster d'Arquitectura del Paisatge -DUOT - UPC

T: + 34 93 401 64 11 / +34 93 552 0842
Contact via email at: biennal.paisatge@upc.edu

Máster d'Arquitectura del Paisatge -DUOT - UPC
ETSAB- Escola Tècnica Superior
d'Arquitectura de Barcelona
Avenida Diagonal, 649 piso 5
08028 Barcelona-Spain



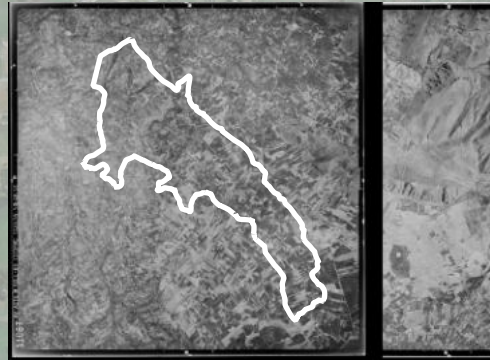
CLIMATE CHANGE AGAIN

11th International Biennial Landscape Barcelona

Barcelona September 2020
SCHOOL PRIZE



TRANSFORMING LANDSCAPE



IGM, 1955



IGM, 1968



IGM, 1992



IGM, 2000



- Birdwatching hotspots
- Existing trekking track
- Existing country road
- River Jato
- Other tributaries



DANILO DOLCI:
"ARCHITECT OF MANKIND"

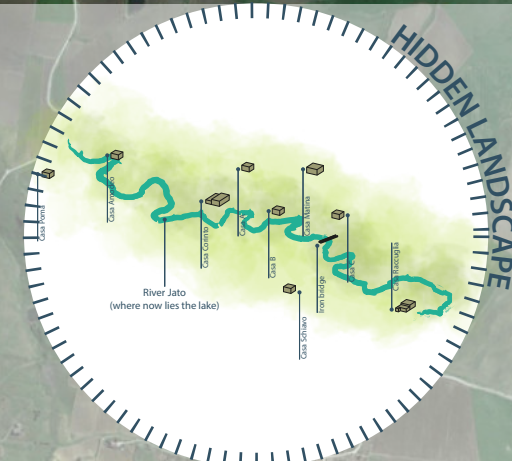
To understand why the lake was built, it is necessary to go back in history, between the 50's and the 60's: for years, farmers had struggled to water their fields and were forced to pay very high prices to guarantee the survival of their crops, with "water lords" asking for more each time. The result was that only a few of them were able to pay. It was not until Danilo Dolci led a group of farmers that water was, finally, available to everyone.



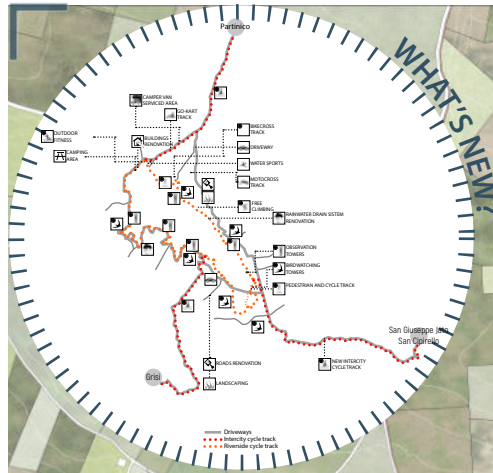
Despite its artificial origin, this landscape has developed its own vegetation, displaying countless varieties of species and creating a landscape that is one of a kind - watch out for spring and summer, that is when it is in full bloom!



The mild climate of this landscape creates the perfect conditions for birds to spend the winter season - December and January are the perfect months for birdwatching. If you prefer warmer days, wait for the return migration flow in March - May!



Before being flooded, the valley that houses Lake Poma was previously crossed by the continuous stream of the River Jato. Here is what lies underneath the water line (and sometimes comes back on the surface...)



FLOATING SCULPTURES
Remember that hidden landscape? Now you will always know where things are - even when you cannot see them!

BIRDWATCHING TOWERS



CAMPING AREA



OBSERVATION TOWERS



BIRDS TOWERS

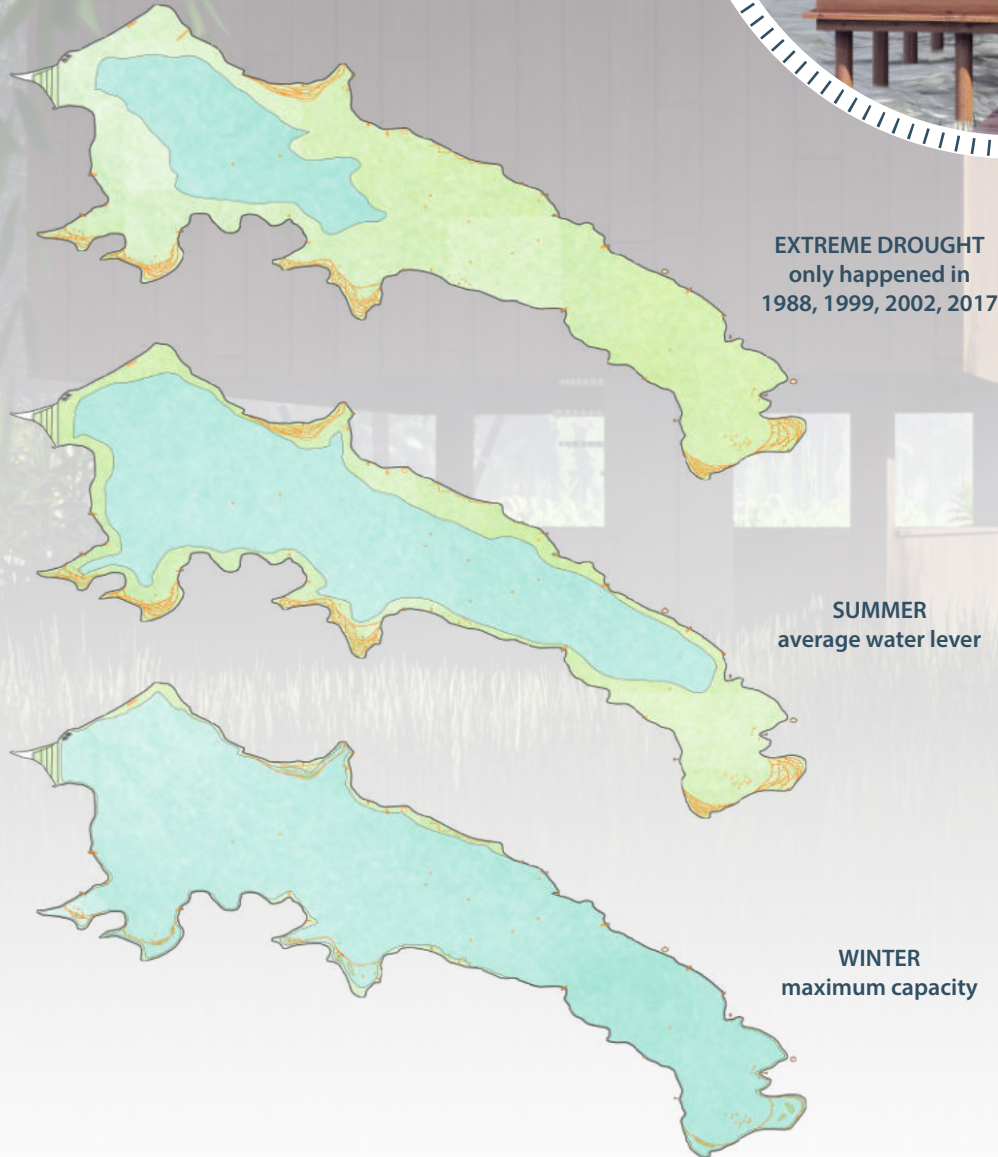
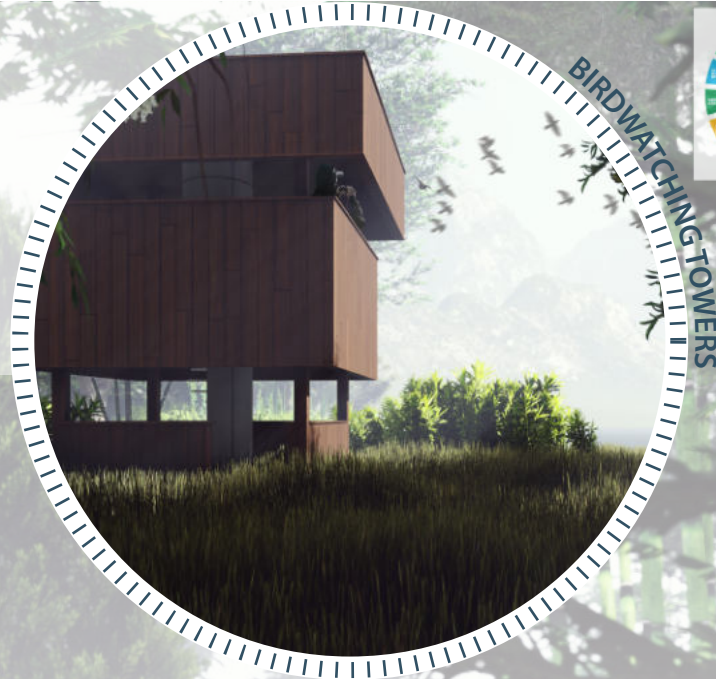


PATHS ON THE WATER



HOW DOES IT WORK?

As shown below, the waterline tends to vary throughout the year, depending on precipitation and water demand by the fields and towns. Therefore, the paths over the water adjust to its level - some of them by being flooded during the rain season, some other ones by being above the waterline all year round.



Embedded in the landscape, these birdwatching towers allow visitors to enjoy the beauty of the fauna populating the oasis without disturbing it. Inside each tower you will find the basic equipment for birdwatching along with informative panels about the resident and visiting species.

To fully embrace the nature surrounding the reserve, these observation towers* allow visitors to enjoy the view from a different point of view. Strategically planted in focal points of the oasis, these 12 metres tall devices will reveal views that would otherwise remain hidden.
*as shown in the previous panel

