

The Don River Bird Corridor

"In the dawn chorus of birds one hears the throb of Life"
Rachel Carson, Silent Spring 1962

Country / City	Toronto, Canada
University / School	University of Toronto - John H. Daniels School of Architecture Landscape and Design
Academic year	2019-2020
Title of the project	The Don River Bird Corridor
Authors	Nadia Chan

TECHNICAL DOSSIER

Title of the project	The Don River Bird Corridor
Authors	Nadia Chan
Title of the course	LAN1011 - Landscape Studio I
Academic year	2019.Fall
Teaching Staff	Behnaz Assadi (Coordinator), Megan Esopenko
Department/Section/Program of belonging	Landscape Architecture
University/School	University of Toronto - John H. Daniels School of Architecture Landscape and Design



Written statement, short description of the project in English, no more than 250 words

At the confluence of two major migratory bird paths, the city of Toronto can be considered a superhighway, supporting the habitat of millions of birds each year. They flock to the watercourses that have sculpted the city – the rivers and ravines that lay within the ever-developing urban fabric. Under the threat of climate change and the loss of vital habitat, species at risk seek refuge in the the network systems of parks that connect to the city's most valuable life source - the water. This project dedicates the Lower Don River and the Riverdale Park to the birds of Toronto, with the intent to reconnect the city to an abundant ecosystem it once supported. The Lower Don Bird Corridor will provide target ecosystems - varying environmental condistions for bird species to nest and forage. A series of follies act as interactive structures for both birds and humans, trailing through a gradient of constructed wetlands and woodlands that provide habitat for wildlife but also retain floodwater and filter stormwater from the neighbouring roads before it reaches the river. With Riverdale Park East and West as the the entry ways to the trail, the path makes way for bird enthusiasts and pedestrians alike. A restored landscape, the Lower Don River becomes a continuous corridor for birds and other wildlife to thrive, revitalizing the city's connection to the Don River and the greater ravine trail network.

For further information
Máster d'Arquitectura del Paisatge -DUOT - UPC

T: + 34 93 401 64 11 / +34 93 552 0842
Contact via email at: biennal.paisatge@upc.edu

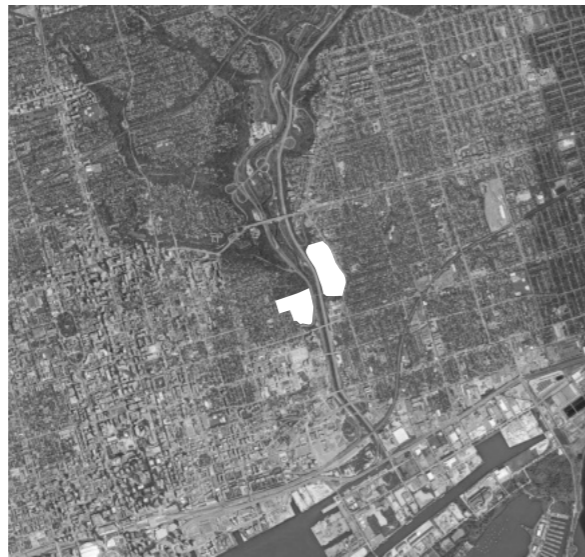
Máster d'Arquitectura del Paisatge -DUOT - UPC
ETSAB- Escola Tècnica Superior
d'Arquitectura de Barcelona
Avenida Diagonal, 649 piso 5
08028 Barcelona-Spain



CLIMATE CHANGE AGAIN

11th International Biennial Landscape Barcelona

Barcelona September 2020
SCHOOL PRIZE



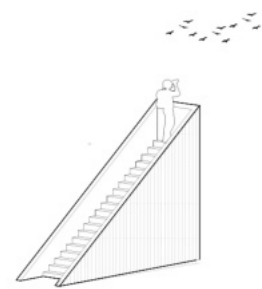
Key Plan

Context

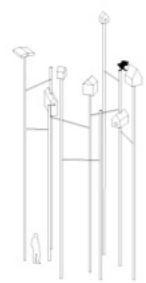
Riverdale Park is a large 60 hectares of park space that consists of an east and west spanning the Lower Don River, serving as a backyard to the neighbouring communities of Cabbagetown and Riverdale. It is situated within a larger park system that is connected by the river and a multi-use trail. Although the river is central to the park, it hides between the two spaces and is only accessed by a single bridge, bounded by major transportation corridors, which were made possible by the channelization of the river in the late 1800s. The current conditions show that the river is in continual decline,, with issues of soil erosion and invasive species that line the rivers edge, threatening the health of its ecosystem.



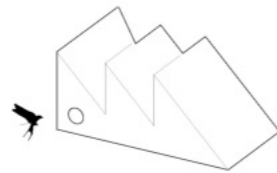
Bird Folly Models



1 - Viewing Platform



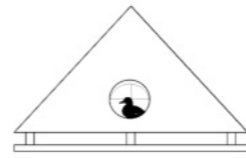
2 - Perching Station



3 - Tree Swallow Nest Box



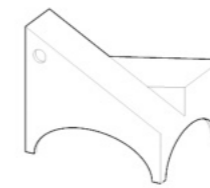
4 - Great Blue Heron Nesting Platform



5 - Floating Duck Houses



6 - American Kestrel Nest Box

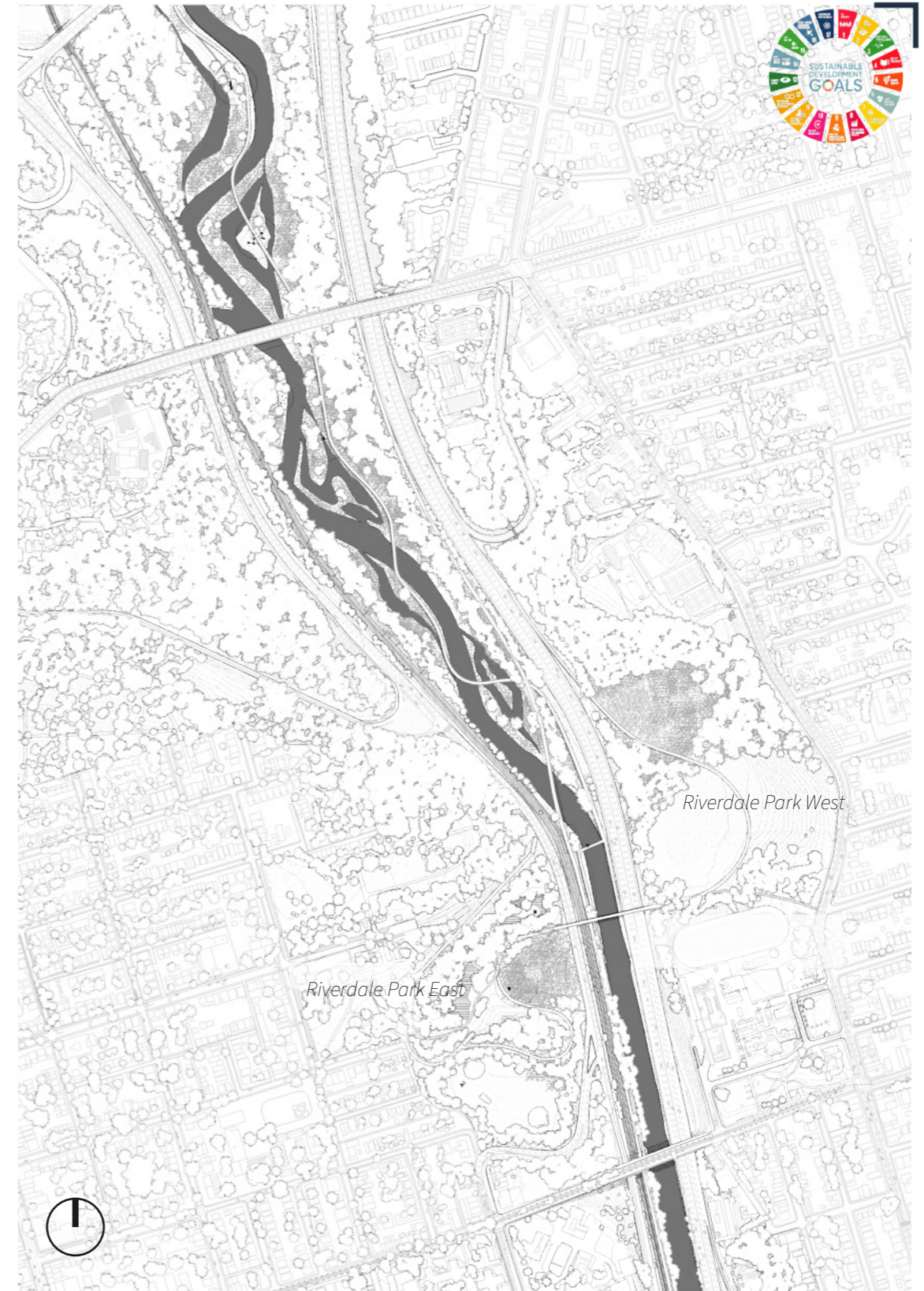
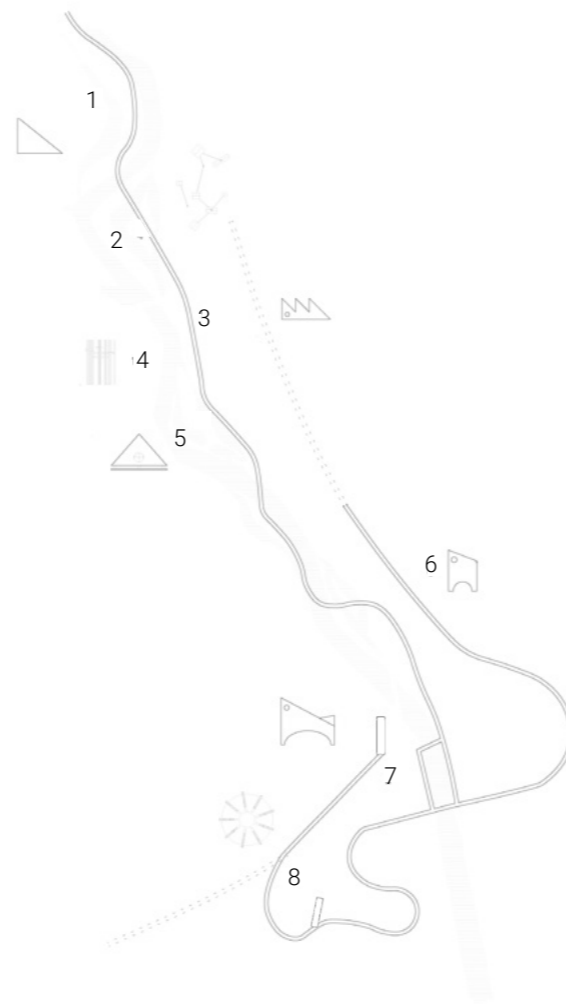


7 - Barn Swallow House



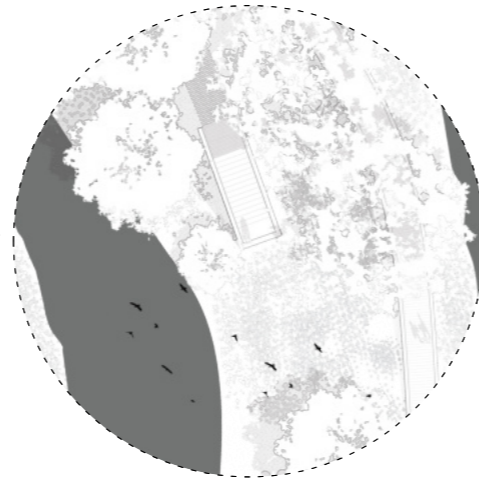
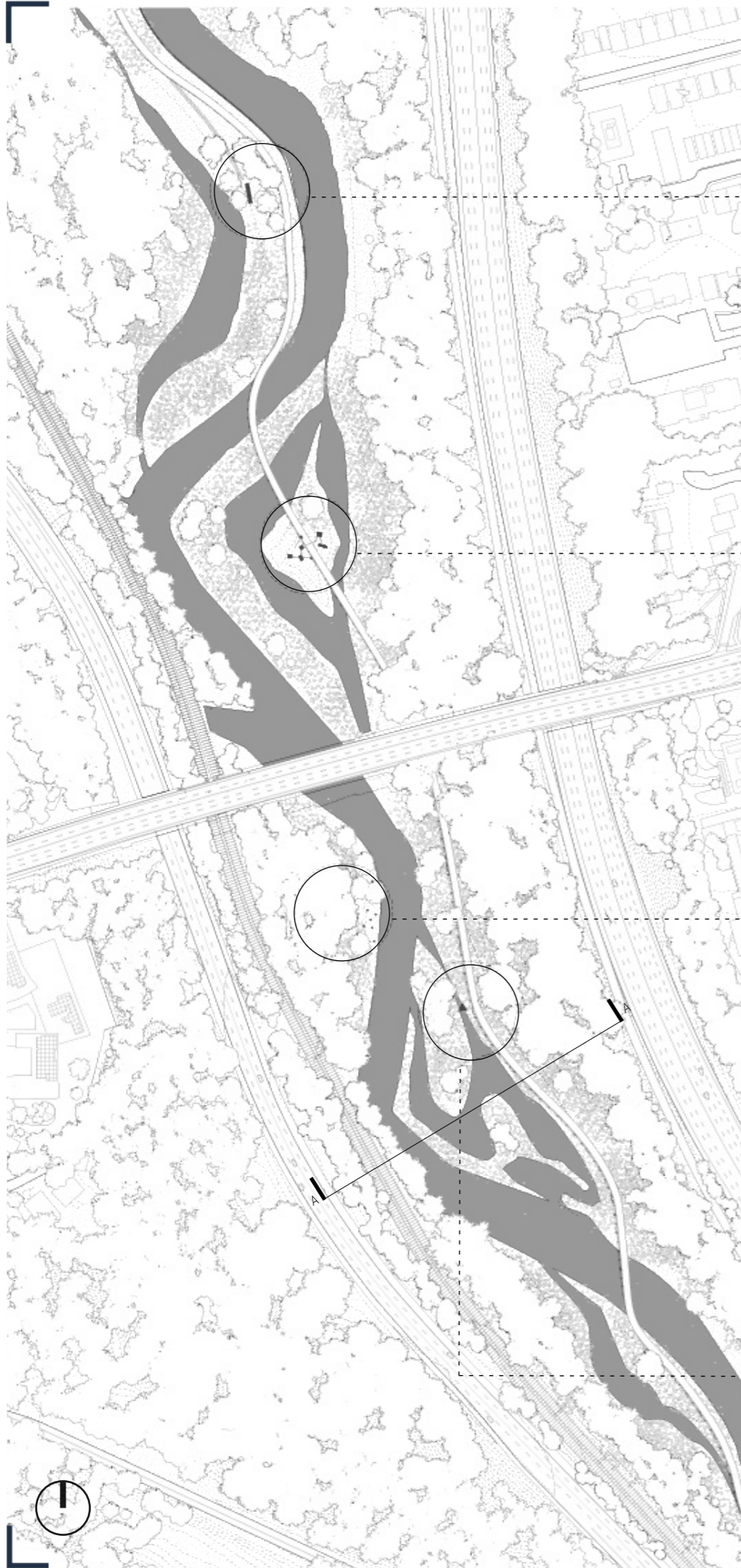
8 - Dovecote

Map of Follies



Site Plan - Proposed

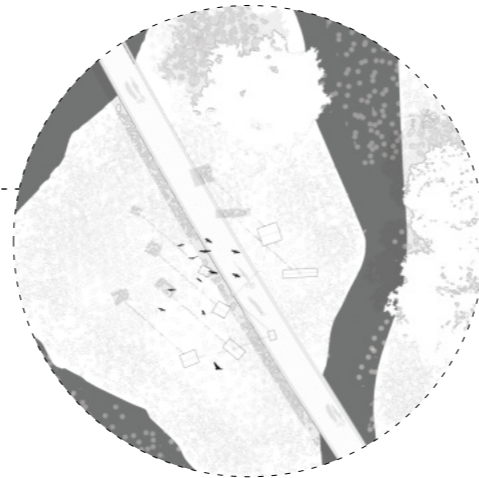




1

Wet Meadow

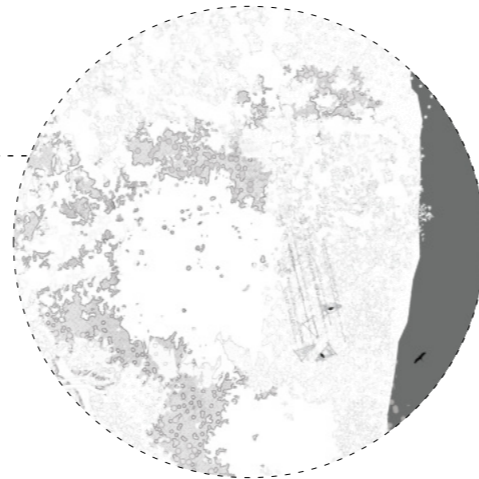
- Salix alba - White Willow
- Populus deltoides - Eastern Cottonwood
- Salix nigra - Black Willow
- Typha - Cattail
- Carex stricta - Tussock Sedge
- Helianthus - Sunflower
- Juncus Effuses - Soft Rush



2

Wet Meadow

- Populus Trembloides - Trembling Aspen
- Rhus Typhina - Staghorn Sumac
- Prunus virginiana - Chokecherry
- Bromus madritensis - Foxtail Brome
- Balsaminaceae - Spotted jewelweed
- Solidago - Goldenrod
- Cephalanthus occidentalis - buttonbush



4

Forested Wetlands

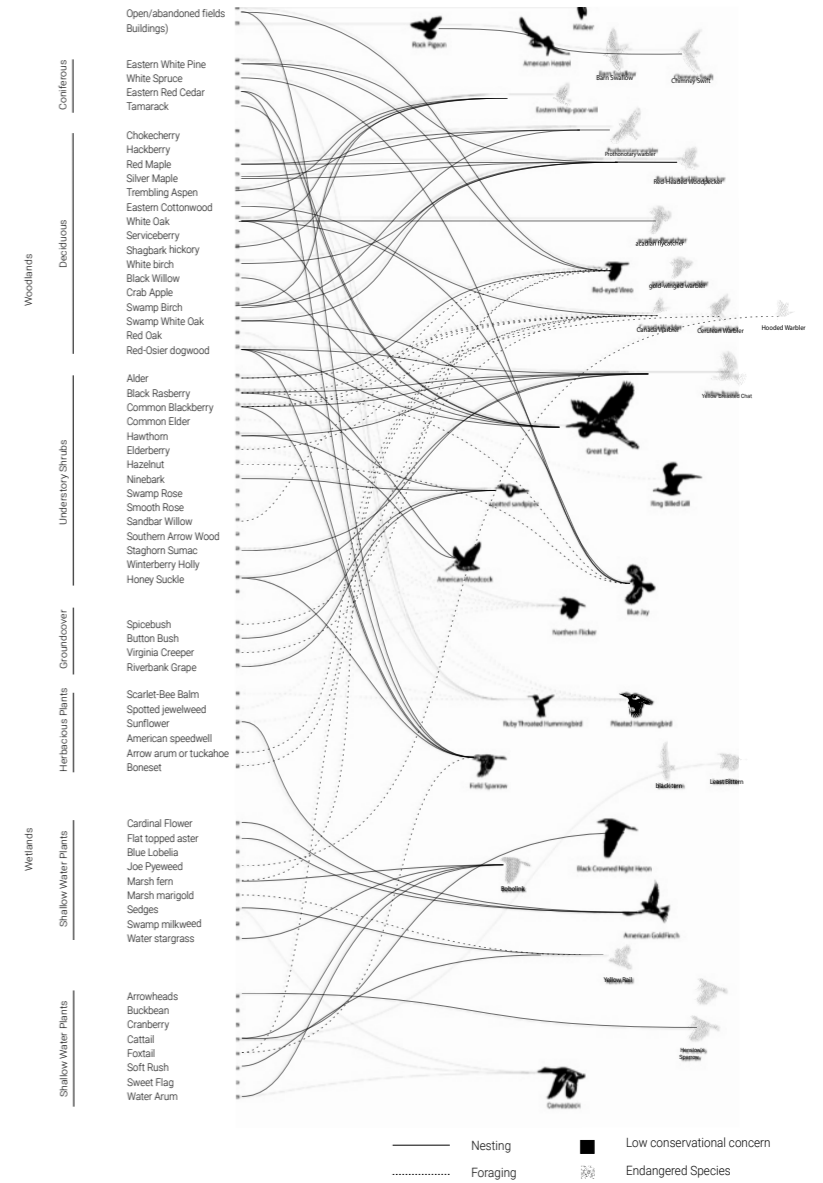
- Pinus Strobus - Eastern White Pine
- Betula alleghaniensis - Yellow Birch
- Acer Rubrum
- Suga canadensis - Eastern Hemlock
- Crataegus - Hawthorn
- Cornus stolonifera - Red Osier Dogwood
- Rosa palustris - Swamp Rose



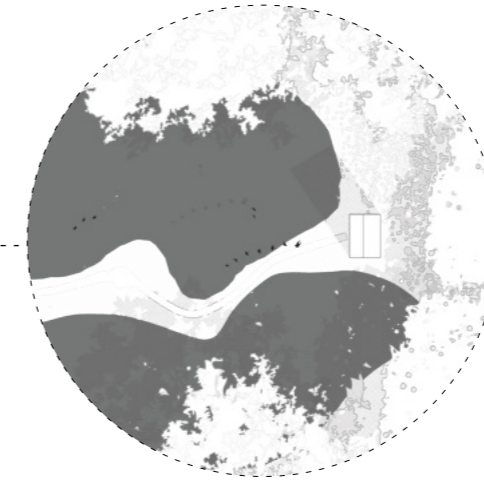
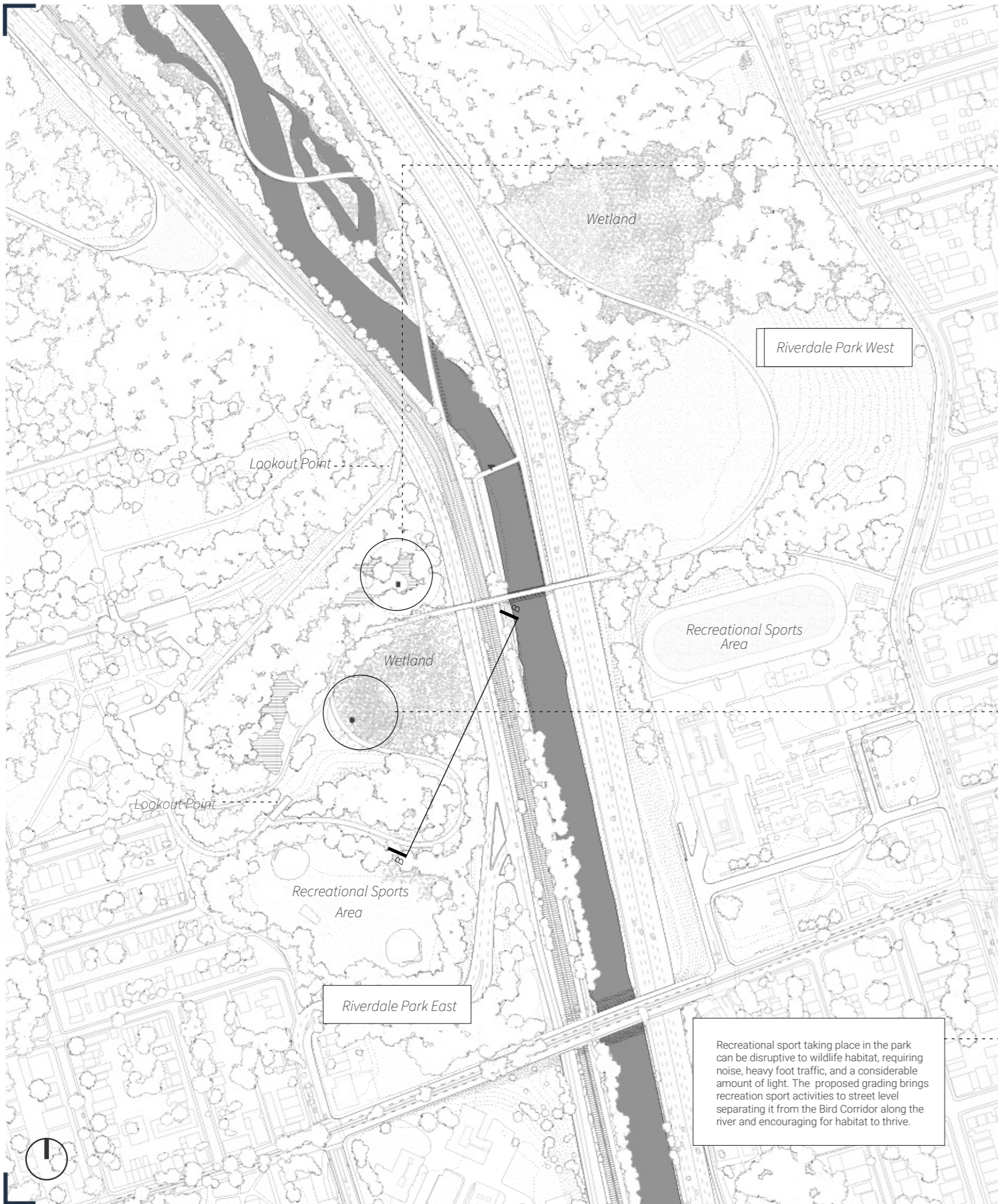
5

Marsh

- Amelanchier Canadensis- Serviceberry
- Carya Ovata - Yellow Birch
- Populus Deltoides - Trembling Aspen
- Typha - Cattail
- Peltandra - Arrow Arum
- Menyanthes - Buckbean
- Lobelia Cardinalis - Cardinal Flower

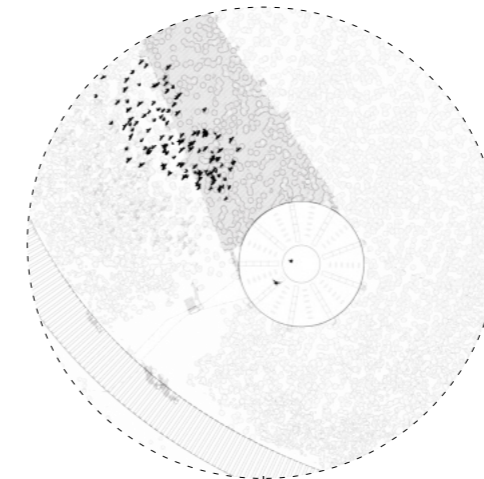


Areas of Foraging / Nesting



Wetland

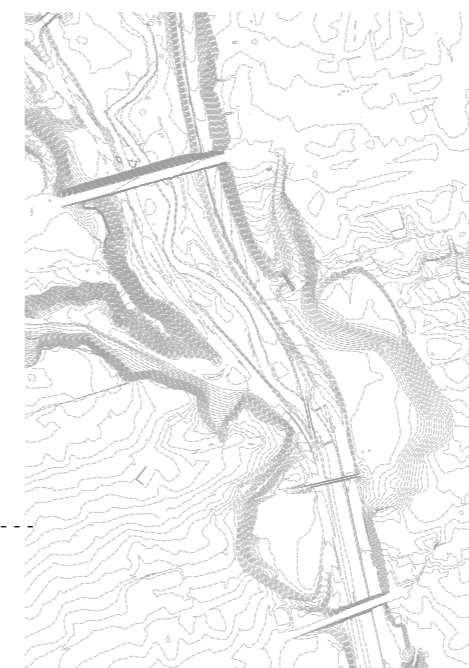
- Acorus calamus* - Sweet Flag
- Eutrochium purpureum* - Joe Pyeweed
- Asclepias incarnata* - Swamp Milkweed
- Lobelia cardinalis* - Cardinal Flower
- Monarda fistulosa* - Wild Bergamot



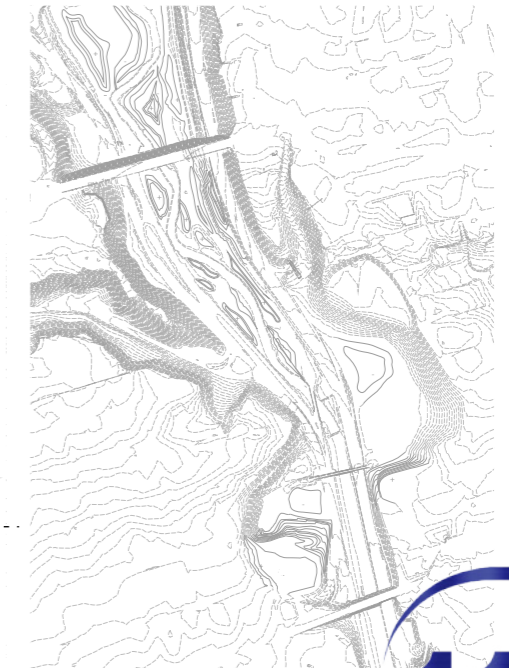
Pond

- Populus deltoides* - Eastern Cottonwood
- Salix a Alba* - White Willow
- Robinia pseudoacacia* - Black Locust
- Acorus calamus* - Sweet Flag
- Salix babylonica* - Weeping Willow
- Thelypteris palustris* - Marsh Fern
- Calla Palustris* - Water Arum
- Hierochloe odorata* - Water Sweetgrass

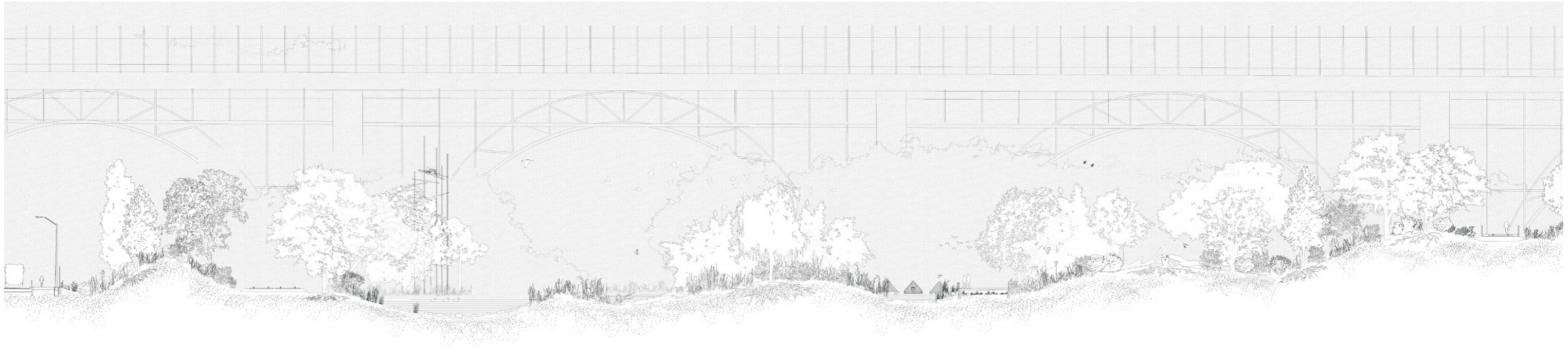
Recreational sport taking place in the park can be disruptive to wildlife habitat, requiring noise, heavy foot traffic, and a considerable amount of light. The proposed grading brings recreation sport activities to street level separating it from the Bird Corridor along the river and encouraging for habitat to thrive.



Existing Grading



Proposed Grading



Section A - The Don River Trail



Section B - Riverdale Park East