



Country / City BANGKOK, THAILAND
University / School DEPARTMENT OF LANDSCAPE ARCHITECTURE, FACULTY OF ARCHITECTURE, CHULALONGKORN UNIVERSITY
Academic year 2019
Title of the project THAI-SIKHS GURDWARA, A PLACE OF ASSEMBLY AND WORSHIP FOR SIKHS
Authors PRINDA MALOTRA

TECHNICAL DOSSIER

Title of the project	THAI-SIKHS GURDWARA, A PLACE OF ASSEMBLY AND WORSHIP FOR SIKHS
Authors	PRINDA MALOTRA
Title of the course	BACHELOR OF LANDSCAPE ARCHITECTURE
Academic year	2019
Teaching Staff	DR.VIPAKORN THUMWIMOL, PIN UDOMCHAROENCHAIKIT
Department/Section/Program of belonging	DEPARTMENT OF LANDSCAPE ARCHITECTURE, FACULTY OF ARCHITECTURE
University/School	CHULALONGKORN UNIVERSITY



Written statement, short description of the project in English, no more than 250 words

Thai-Sikhs Gurdwara Complex is a religious place. It is a spiritual center for Sikhs that consists of worship place and community space. The intention of the new Gurdwara is to gather more than 70,000 people in a place that can conduct festivals, traditional functions, and ritual place for Thai-Sikhs community. This Gurdwara also aims to support the community to realize how important Sikhs's ritual is and pass on the tradition through custom and way of life. The Sikhs tradition is based on the beautiful scripture that explained about equality, caring, sharing, love, pure, and kindness.

With the expansion of the Thai-Sikhs community in Thailand over the years, Thai-Sikhs Gurdwara complex is located on 23.7 acres in the area where most of the Thai-Sikhs residential stay. The planning of the complex will be based on Sikhs's scripture, believes, and traditions. Furthermore, the design also represents Sikhs's symbol having functional usage that is planned to serve religious requirements. Additionally, all details development is designed to match with the modern lifestyles, aiming to encourage new Sikhs's generation to visit and make the most use of this complex. Lastly, this project also aims for all the community members to spend more time within the community to build up a stronger relationship and distribute the name of Sikhs to the whole country.

For further information
Máster d'Arquitectura del Paisatge -DUOT - UPC

T: + 34 93 401 64 11 / +34 93 552 0842
Contact via email at: biennal.paisatge@upc.edu

Máster d'Arquitectura del Paisatge -DUOT - UPC
ETSAB- Escola Tècnica Superior
d'Arquitectura de Barcelona
Avenida Diagonal, 649 piso 5
08028 Barcelona-Spain



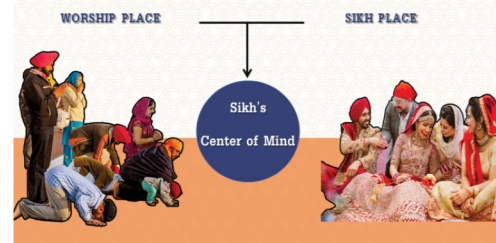
CLIMATE CHANGE AGAIN

11th International Biennial Landscape Barcelona

Barcelona September 2020
SCHOOL PRIZE

GURDWARA ANALYSIS

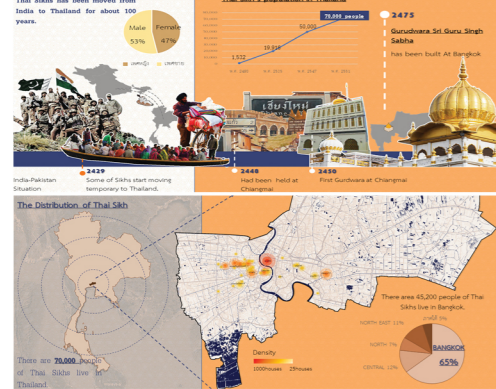
What is Gurdwara



What happens in Gurdwara



What are the values of Gurdwara

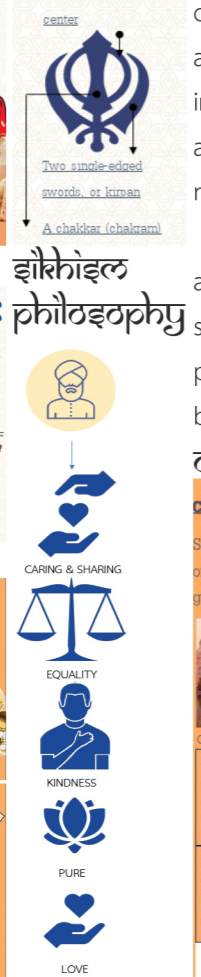


Sikhism philosophy and case study of the most important gurdwara has been analyzed and applied in the planning concept. The kindness and selfless with no conviction represent by prayer hall's located. The equality represents by the community kitchen also by the balancing of planning area of worship place and Sikhs place with the design on an axis. Caring and sharing represent space for volunteers also space where the public can participate in Gurdwara. Love represents in every space, loves each other, and loves nature. Pure represents in a sacred pond that will clean up all the bad and the lotus which is one of the symbols of pure according to the Sikhs's believes.

What is the design



What is the design



Gurdwara is a place to assembly and worship for Sikhs. The master plan according to zoning criteria, planning criteria, and activities criteria. The most important area is a prayer hall, where the scripture stayed, so prayer hall have to placed in the middle of the pond on the lowest point which will represent kindness and also the prayer hall shouldn't be mysterious, the prayer hall has to placed in the middle of the plan and easily see from the entrance.

After decided to placed the prayer hall there, all others space and function are fit in the plan as well like the community kitchen and museum that are public space placed in the front, the sacred pond that is semi-public and peaceful space placed near the prayer hall, and Sikhs space which is semi-private placed at the back and placed sacred park as a transition of 2 zones.

Case Study

Study from Golden temple, heart of Sikhism that is the most sacred gurdwara in the world

- SACRED POND**: Sikhs believes that after take a quick bath in the sacred pond will clean up all the bads.
- COMMUNITY KITCHEN**: Open for everyone for free represent equality and sharing to each other.
- DOME**: They believes that everyone should lives like a lotus. We can't choose where to birth but you can choose to be good like a lotus to be white and pure.
- PRAYER HALL SHOULD BE PLACED ON THE LOWEST POINT**: Represent kindness selfless and no conviction with others.
- SACRED PROPORTION**: Believing in the truth proportions that will getting closer to God.
- GATEWAY**: Peace spot before meeting God.
- ENTRY FROM EVERY WAY**: Represent equality that we open for everyone no matter who you are.

Planning

PLANNING

- ENTRY FROM 4 SIDES
- 1 TYPE OF PLAN FOR THE PRAYER HALL
- COVERED SCRIPTURE
- SUNKEN PRAYER HALL
- DIRECT WAY TO GOD FROM N
- COMMUNITY KITCHEN NEAR PRAYER HALL
- AXIS PLAN
- SEVERAL BUILDINGS

ELEMENT

- SCRIPTURE
- PRAY AREA
- SCRIPTURE'S ROOM
- HOLY WATER
- SIKH'S ACTIVITIES SPACE
- LIBRARY
- NURSERY
- SIKH'S PLACE
- PRACEFUL SPACE
- COMMUNITY KITCHEN
- DOME
- GATEWAY
- KITCHEN BATH AND ALL SERVICES
- SACRED SPACE

SPACE

- SIKH'S ACTIVITIES SPACE
- PRACEFUL SPACE
- SACRED SPACE

MASTER PLAN

water

- NATURAL POND
- BIOSWALE
- RESEVOIR CHANEL
- DRAINAGE CHANEL
- DRAINAGE CANAL
- FLOODGATE
- RAIN GARDEN

planting concept

- Seasoning
- Evergreen
- Existing
- lotus

zoning

- worship place
- transition

water

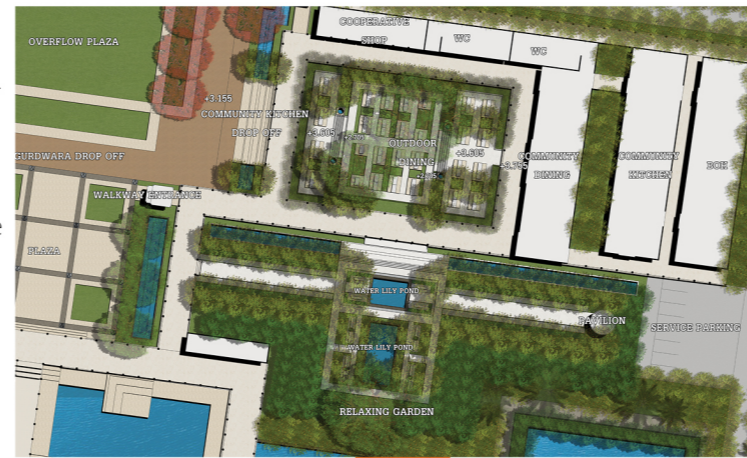
- WL+2.855
- BL+0.855
- WL+3.155
- BL+0.855
- WL+3.755
- WL+0.62
- BL -0.88
- BL -0.88

worship place

Worship place, a place where all of Sikhs people are gathering and praying together with peace for being closer to Guru. This zone will start with a welcome plaza that is the area to guide all the visitor to the prayer hall, community kitchen, and museum. This zone will represent sacred by all material and planting with formal form plants and axis planning.

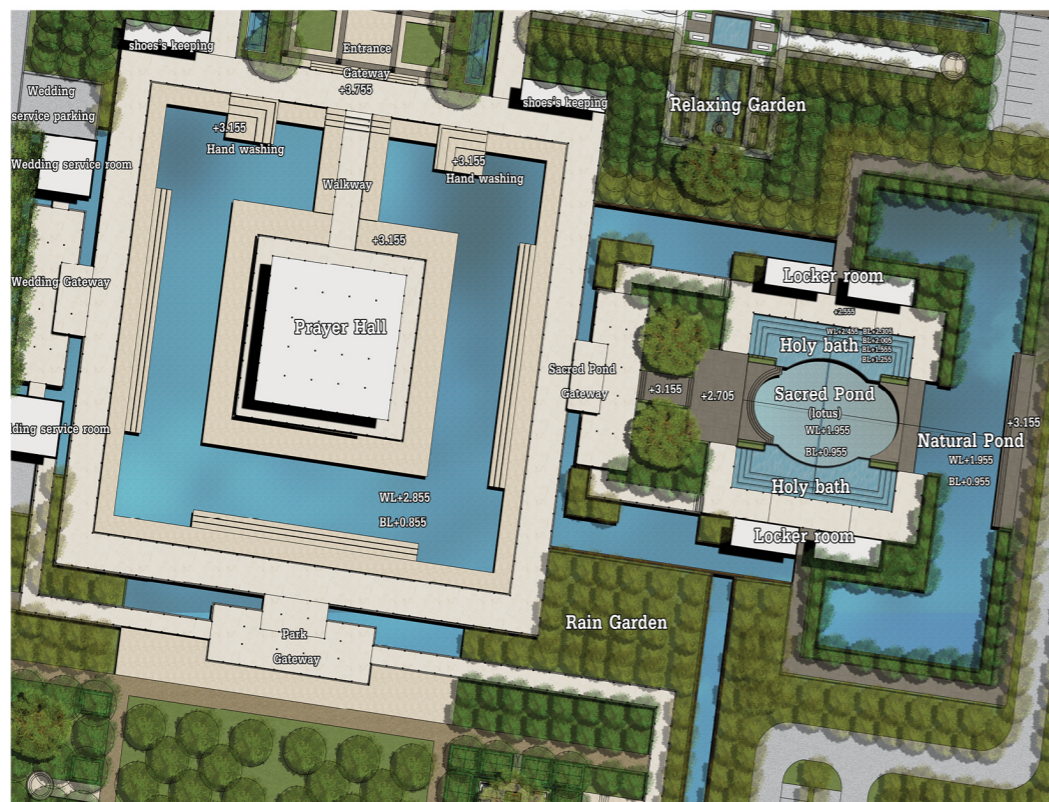
The community kitchen will represent the equality by the management area of the dining space for every to eat on the floor no matter who they are or where they from. Also, represent caring and sharing by provided space for all volunteers to help all the staff prepared food and clean up. this space has been designed according to the dimension of space and uses all the native Indian plants also Sikhs' important plants to brings all visitors more understanding Sikhs culture and tradition.

COMMUNITY KITCHEN PLAN



This area consists of the prayer hall, the hall that keeps all the scripture and place to gather and pray, that has been placed in the middle of the pond on the lowest point to represent all kindness and no convictions. The sacred pond that combined the natural sacred pond and the holy bath represents peace and pure by planning near the prayer hall. Using the white lotus to represent pure according to the scripture and also designed space for watching and concentrating with themselves. Moreover, creating a space for a quick bath to clean up all the negative things according to Sikhs' beliefs.

PRAYER HALL AND SACRED POND PLAN

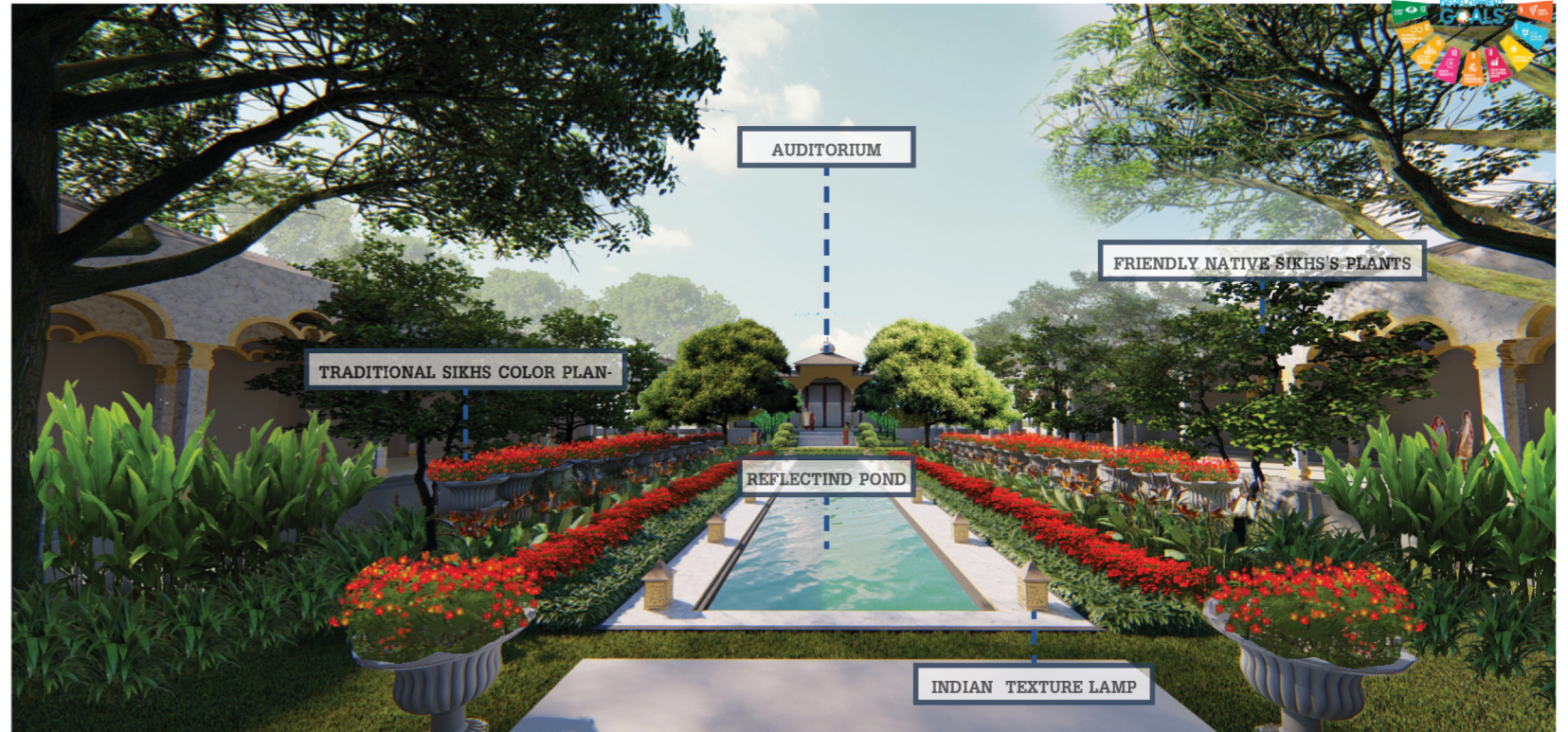


ਭੌਰੇਏ ਪ੍ਰੋਜੈਕਟ

Sikhs place, a place where all of Sikhs people celebrate all traditional functions and rituals, social activities, and community gathering. This zone connect with the worship place through the sacred park that represents gradient transition by starting to mix the formal planting from worship place to friendly planting in Sikhs place.

Sikhs' place can enter from the transition park or Sikhs entrance with the welcome court area represent the identity of custom and tradition by friendly planting, traditional texture, and Sikh's color. Linking the space by Indian styles corridor to the auditorium where the Sikhs activities happening. Sikhs community space has been designed to mix an indoor auditorium and outdoor plaza with prayer hall as a background and decorate with traditional texture, special element, and important plants.

SIKHS PLACE PLAN

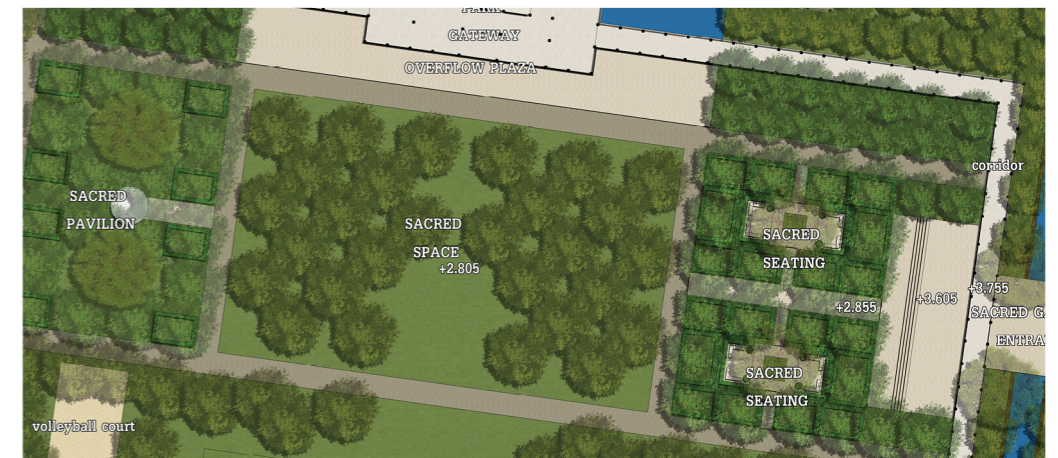


SIKHS COMMUNITY GATHERING PLAZA

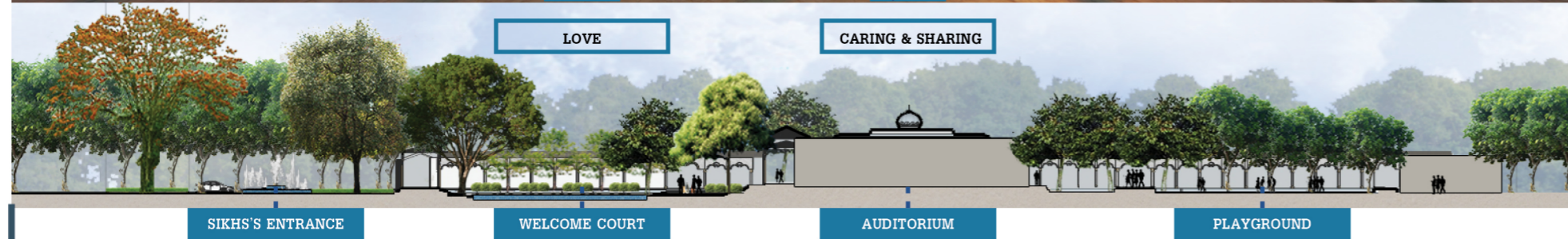
The transition park consists of friendly trees and formal shrubs with a soft grid planting plan. Gradient the formal planting of friendly planting. This space provides the peace space and gathers green space which can use as a park to relax and a buffer of the sacred space and the social space. SACRED SPACE, THE TRANSITION PARK PLAN



COMMUNITY PLAZA



SACRED SPACE, THE TRANSITION PARK



SIKHS'S ENTRANCE

WELCOME COURT

AUDITORIUM

PLAYGROUND



FRIENDLY NATIVE SIKHS'S PLANTS