

Country / City Italy / Reggio Calabria
University / School *Mediterranean University of Reggio Calabria*
Academic year 2017/2018
Title of the project Sant'Agata River Urban Park
Authors Daniela Iannello, Antonio Quattrone, Fiorina Spina

TECHNICAL DOSSIER

Title of the project	Sant'Agata River Urban Park
Authors	Daniela Iannello, Antonio Quattrone, Fiorina Spina
Title of the course	Landscape design
Academic year	2017/2018
Teaching Staff	Teachers: Daniela Colafranceschi/Vincenzo Giofrè
Department/Section/Program of belonging	Department Architettura e Territorio 2nd Cycle Degree Course in Architecture
University/School	Mediterranean University of Reggio Calabria



Written statement, short description of the project in English, no more than 250 words

The relationship between the rivers - 'fiumare' - and the city of Reggio Calabria determines around the urban river parks landscape design the recognition of a central value of the waterways in the regeneration and redevelopment processes. River areas are often landscapes of degradation, abandonment, waste; rejection landscapes. They're compromised landscapes by road infrastructure networks built beside, above, inside the waterways; landscapes of abandonment, that are not designed or excluded from urban planning.

The Fiumara Sant'Agata in Reggio Calabria. As a space for interaction, mobility and environmental sustainability, the 'linear' dimension of the project is redesigned as a complex landscape; a 'device' to experiment with strategic levels of intervention affecting infrastructure, slow mobility and services: on-board areas, cycle lanes, paths, gardens, vegetable gardens, agricultural and recreational areas. An environmental and collective quality of new spaces to live in. The system aims to enhance a limnological ecosystem, which concerns lake hydrology, through expanding basins designed as wetland gardens. A strategy that, by ensuring river management and the possibility of flooding of marginal areas in case of large water flow, restores the sustainable development of the river as an ecological and energy system. These are solutions that confer to the river the quality and the role of longitudinal and transverse sewing in a dual value: between the edges of its banks, and at the same time between the river and the context to which it belongs, maintaining the character of penetration and travel infrastructure in the reorganization of the urban building fabric.

For further information
Máster d'Arquitectura del Paisatge -DUOT - UPC

T: + 34 93 401 64 11 / +34 93 552 0842
Contact via email at: biennal.paisatge@upc.edu

Máster d'Arquitectura del Paisatge -DUOT - UPC
ETSAB- Escola Tècnica Superior
d'Arquitectura de Barcelona
Avenida Diagonal, 649 piso 5
08028 Barcelona-Spain



CLIMATE CHANGE AGAIN

11th International Biennial Landscape Barcelona

Barcelona September 2020
SCHOOL PRIZE



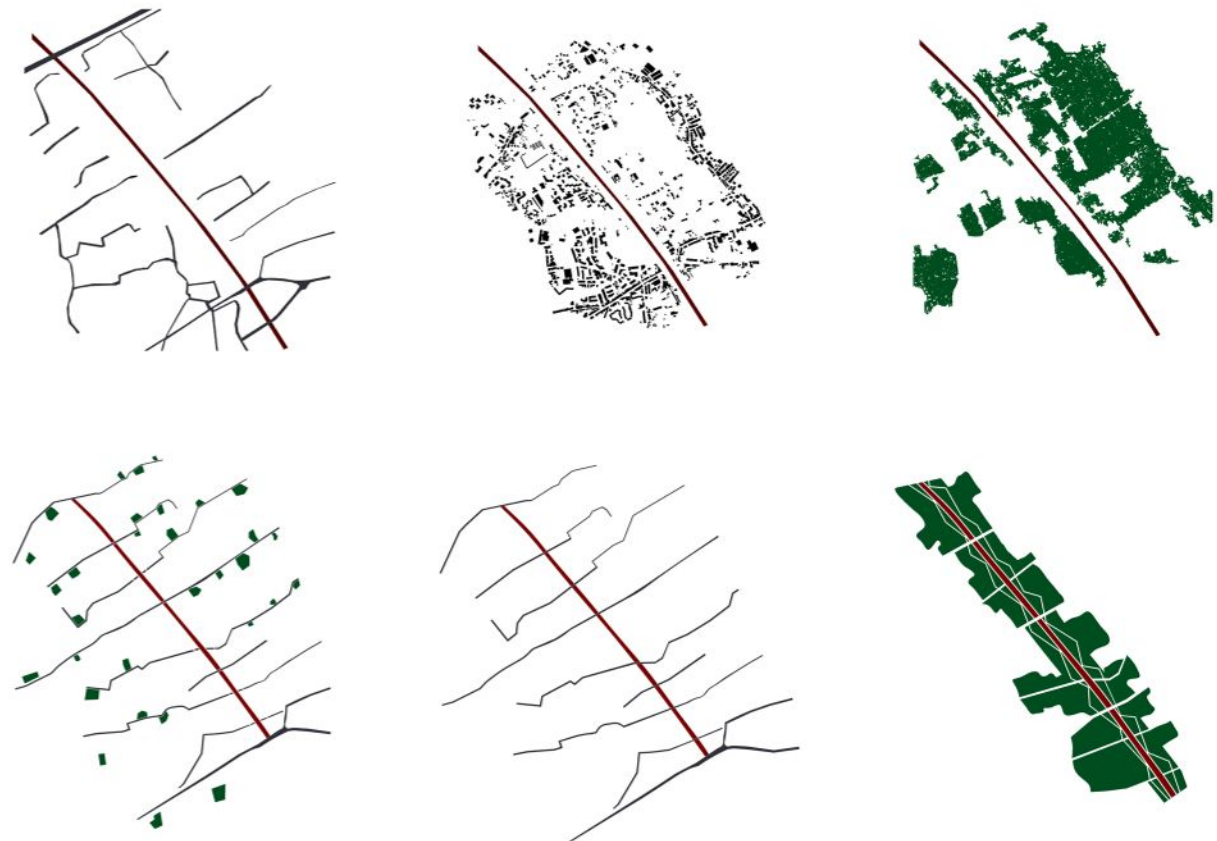
Reggio Calabria, Italy

Fiumara Sant'Agata



Project area photographs: inspection with students
Fiumara Sant'Agata, October 2017





Layers

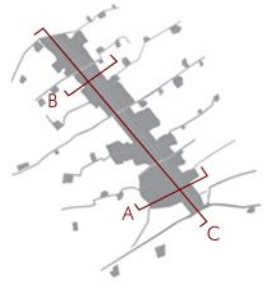
Vegetation cycle

<i>Cercis siliquastrum</i> (Albero di giuda)	[Color swatch]	[Color swatch]
<i>Lagerstroemia indica</i> (Mirto crespò)	[Color swatch]	[Color swatch]
<i>Olea europea</i> (Olivo)	[Color swatch]	[Color swatch]
<i>Pinus pinea</i> (Pino domestico)	[Color swatch]	[Color swatch]
<i>Prunus cerasifera</i> (Ciliegio supino)	[Color swatch]	[Color swatch]
<i>Quercus ilex</i> (Leccio)	[Color swatch]	[Color swatch]
<i>Aloe arborescens</i> (Aloe)	[Color swatch]	[Color swatch]
<i>Cytisus scoparius</i> (Ginestra)	[Color swatch]	[Color swatch]
<i>Euphorbia acanthothamnus</i> (Euforbia)	[Color swatch]	[Color swatch]
<i>Matricaria Chamomilla</i> (Camomilla)	[Color swatch]	[Color swatch]
<i>Salvia officinalis</i> (Salvia)	[Color swatch]	[Color swatch]
<i>Silybum marianum</i> (Cardo mariano)	[Color swatch]	[Color swatch]
<i>Carex comons bronze</i> (Carex)	[Color swatch]	[Color swatch]
<i>Carex evergold</i> (Carex)	[Color swatch]	[Color swatch]
<i>Lavandula angustifolia</i> (Lavanda)	[Color swatch]	[Color swatch]
<i>Rosmarinus officinalis</i> (Rosmarino)	[Color swatch]	[Color swatch]
<i>Senecio cineraria</i> (Cineraria)	[Color swatch]	[Color swatch]
<i>Stipa tenuissima</i> (Stipa)	[Color swatch]	[Color swatch]

G F M A M G L A S O N D



Pocket gardens



Project sections



Rendering of the project

