



Country / City SPAIN

University / School UNIVERSITY OF VALLADOLID / SCHOOL OF ARCHITECTURE

Academic year 2019 / 2020

Title of the project THE RAILWAY LANDSCAPE IN VALLADOLID

Authors JAIME ARGUDÍN FRAILE - MARÍA CALLEJA VARA - MARTÍN LUENGO ARIAS - SUSANA RODRÍGUEZ PASTOR

TECHNICAL DOSSIER

Title of the project	THE RAILWAY LANDSCAPE IN VALLADOLID
Authors	JAIME ARGUDÍN - MARÍA CALLEJA - MARTÍN LUENGO - SUSANA RODRÍGUEZ
Title of the course	ARCHITECTURAL COMPOSITION V: CONTEMPORARY GARDEN AND LANDSCAPE
Academic year	2019 / 2020
Teaching Staff	DARÍO ÁLVAREZ (Coord.) - SAGRARIO F. RAGA - CARLOS RODRÍGUEZ - LAURA LÁZARO
Department/Section/Program of belonging	
Theory of Architecture and Architectural Design / Architectural Composition / Degree in Architecture	
University/School	UNIVERSITY OF VALLADOLID / SCHOOL OF ARCHITECTURE



From the beginning, the intention of this project has been to bridge the architectural gap caused by the Valladolid train tracks, which dramatically cuts the City in two.

What at first seemed like a small-scale project ended up affecting the City as a whole. The intervention area, of great extension and a forgotten state, inspired us to use it as a link in different directions, a link between the North and South of Valladolid. We opened a canal where the long corridor that served as the logistics hub for repairs was, and we filled it with various activities, leisure and sports areas, creating a connection between the two parts of the city, both by bike and on foot. In a second level, we have given a new purpose to the impressive industrial units, endowing them with diverse uses but maintaining their sharp industrial Imaginarium. As an extended element of the intervention, we added a cable car that stitches the city's waist with a 2km route. This cableway stops at several emblematic points of Valladolid, linking its main green areas, such as its main park 'Campo Grande'. The cable car aims to gather these public spaces, each one with its own peculiarities, but making it a solid whole.

The three levels interact with each other, creating a space with no clear limits that is intended to expand in the future.

For further information
Máster d'Arquitectura del Paisatge -DUOT - UPC

T: + 34 93 401 64 11 / +34 93 552 0842
Contact via email at: biennal.paisatge@upc.edu

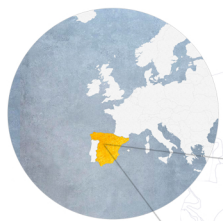
Máster d'Arquitectura del Paisatge -DUOT - UPC
ETSAB- Escola Tècnica Superior
d'Arquitectura de Barcelona
Avenida Diagonal, 649 piso 5
08028 Barcelona-Spain



CLIMATE CHANGE AGAIN

11th International Biennial Landscape Barcelona

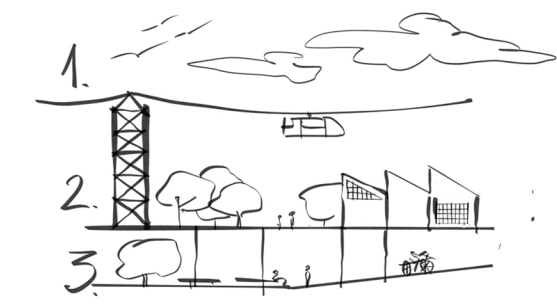
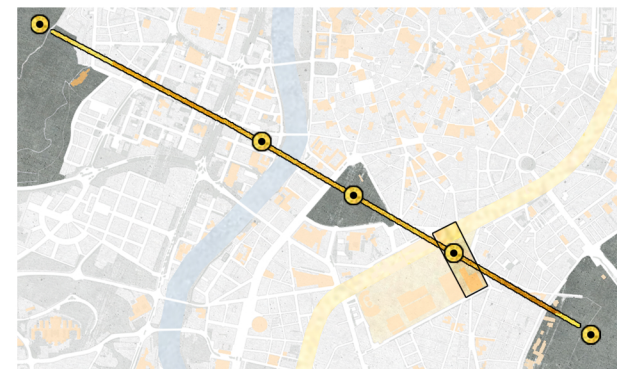
Barcelona September 2020
SCHOOL PRIZE



The intervention site is a large industrial area of great patrimonial value. At the moment, the railway means a great scar in the city of Valladolid, so we decided to use it to our advantage and use our project as a link between North and South Valladolid.



A 2km cable car line connects many of Valladolid's main green and public spaces.



By creating a 3-levelled park we intend to break the gap between North and South Valladolid.



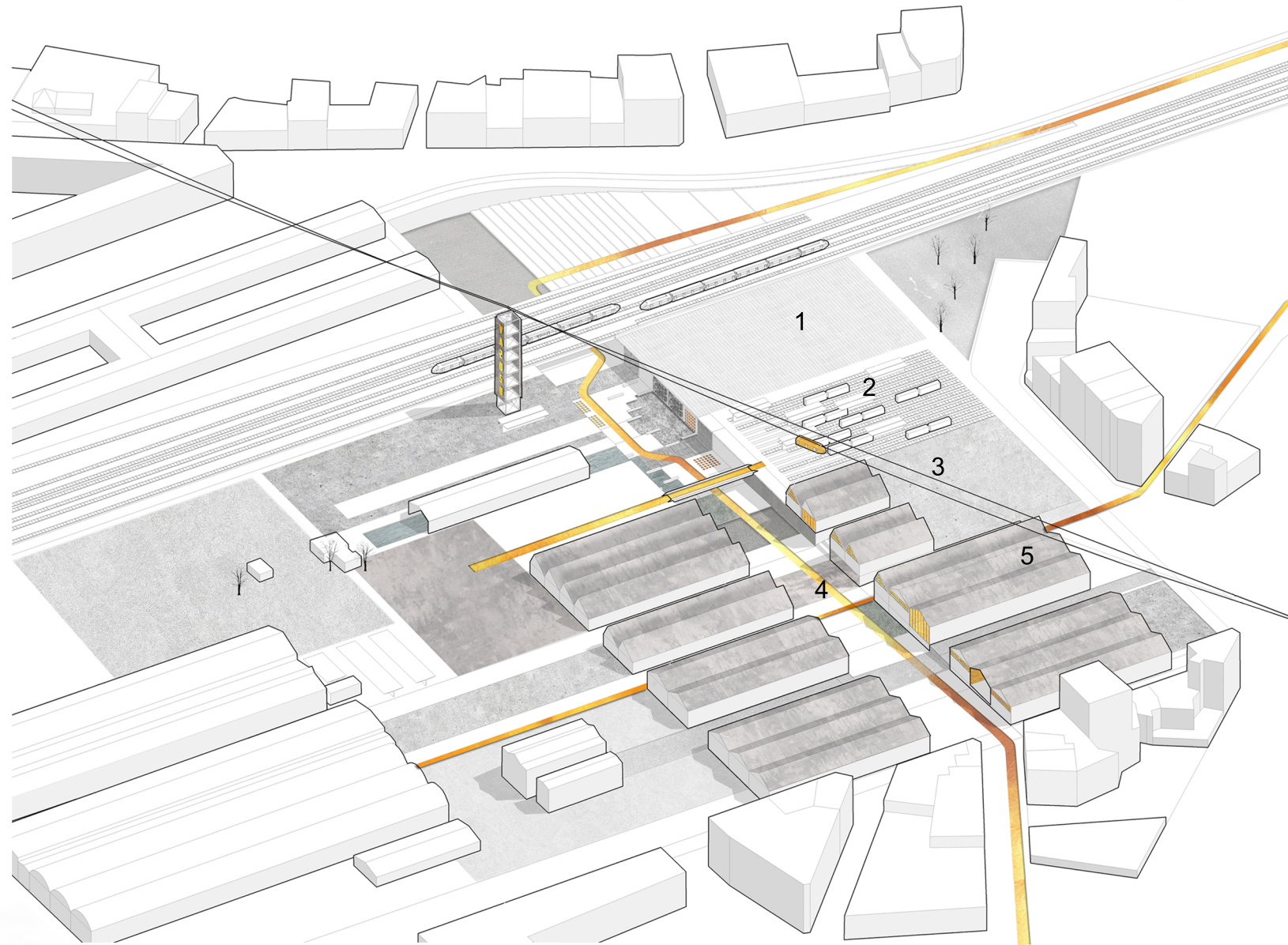
Country / City SPAIN

University / School UNIVERSITY OF VALLADOLID / SCHOOL OF ARCHITECTURE

Academic year 2019 / 2020

Title of the project THE RAILWAY LANDSCAPE IN VALLADOLID

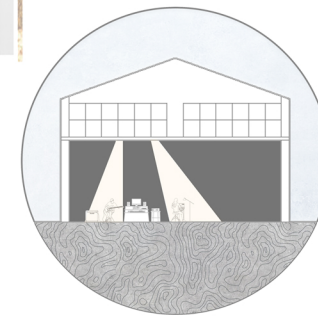
Authors JAIME ARGUDÍN FRAILE - MARÍA CALLEJA VARA - MARTÍN LUENGO ARIAS - SUSANA RODRÍGUEZ PASTOR



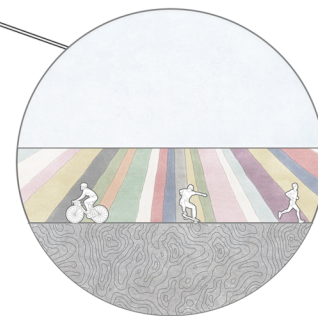
1. TAPIS VERT
Large green space contrasts with the heavy-occupied surrounding area



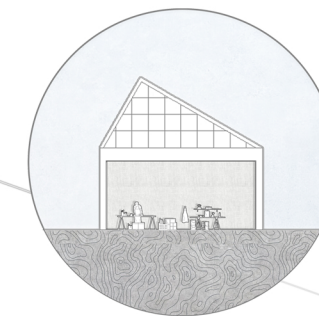
2. FOOD TRUCKS & MARKETPLACE
Old abandoned wagons are given a new purpose.



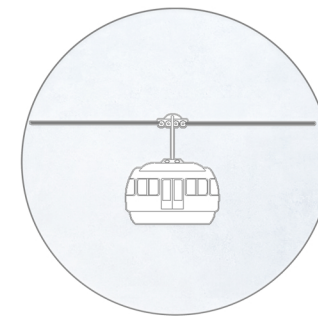
3. PLAZA
Large, convergent and open space for neighborhood unity and public events



4. THE GREAT CANAL
"Flooding" of the old conveyor line with multiple functions and activities.



5. INDUSTRIAL UNITS AS WORKSPACE
Historical industrial units turned into workshop / gardening / sports space.



VALLADOLID CABLE CAR
Straight line that connects North and South Valladolid's open spaces

Country / City **SPAIN**

University / School **UNIVERSITY OF VALLADOLID / SCHOOL OF ARCHITECTURE**

Academic year **2019 / 2020**

Title of the project **THE RAILWAY LANDSCAPE IN VALLADOLID**

Authors **JAIME ARGUDÍN FRAILE - MARÍA CALLEJA VARA - MARTÍN LUENGO ARIAS - SUSANA RODRÍGUEZ PASTOR**



Our intention is for the cable car to serve not only as an attractive element of the project, but as an alternative and sustainable mode of transport.



We've designed our three - leveled park with a multiple connection system, so it can be extended as needed.



Country / City SPAIN

University / School UNIVERSITY OF VALLADOLID / SCHOOL OF ARCHITECTURE

Academic year 2019 / 2020

Title of the project THE RAILWAY LANDSCAPE IN VALLADOLID

Authors JAIME ARGUDÍN FRAILE - MARÍA CALLEJA VARA - MARTÍN LUENGO ARIAS - SUSANA RODRÍGUEZ PASTOR