

Country / City Norway / Oslo
University / School Oslo School of Architecture and Design
Academic year 2020
Title of the project The Quarry and the Tumulus
Authors Runa Oline Hermansen

TECHNICAL DOSSIER

Title of the project	The Quarry and the Tumulus - Gardens of remembrance in Oslomarka
Authors	Runa Oline Hermansen
Title of the course	Master Diploma Project
Academic year	2020
Teaching Staff	Giambattista Zaccariotto
Department/Section/Program of belonging	Institute of Urbanism and Landscape
University/School	Oslo School of Architecture and Design



Written statement, short description of the project in English, no more than 250 words

The diploma project The Quarry and the Tumulus is the transformation of a quarry located in the Oslo forest, that through decades of excavations have produced a large scale, dramatic and artificial landscape. Taking the concept and program of a cemetery as a point of the departure for the design, the project is forcing the reimagination of what a cemetery is and what functions it could have in the future.

With the lack of burial space in Oslo, there is a need to think differently. Huken quarry is, after being shut down, one of many large, available spaces in the city. However, due to the way cemeteries function and are designed today, where the coffin or urn needs to be buried in soils, a quarry would not be considered as a useable space. Using the site itself as the basis for the design, the goal of the project has been to offer different experiences for the family of the deceased, but also a space that could be meaningful for those just passing by, playing with elements like views, water, light and shadow. With a lack of soils, the site selection forced the introduction of a new burial method- natural organic reduction. Using traditional agricultural techniques, the process transforms the body of the deceased to fertile soils. The quarry site and the cemetery program create a new ecosystem, where the program of a cemetery become the factor bringing the quarry back to life.

For further information
Máster d'Arquitectura del Paisatge -DUOT - UPC

T: +34 93 401 64 11 / +34 93 552 0842
Contact via email at: biennal.paisatge@upc.edu

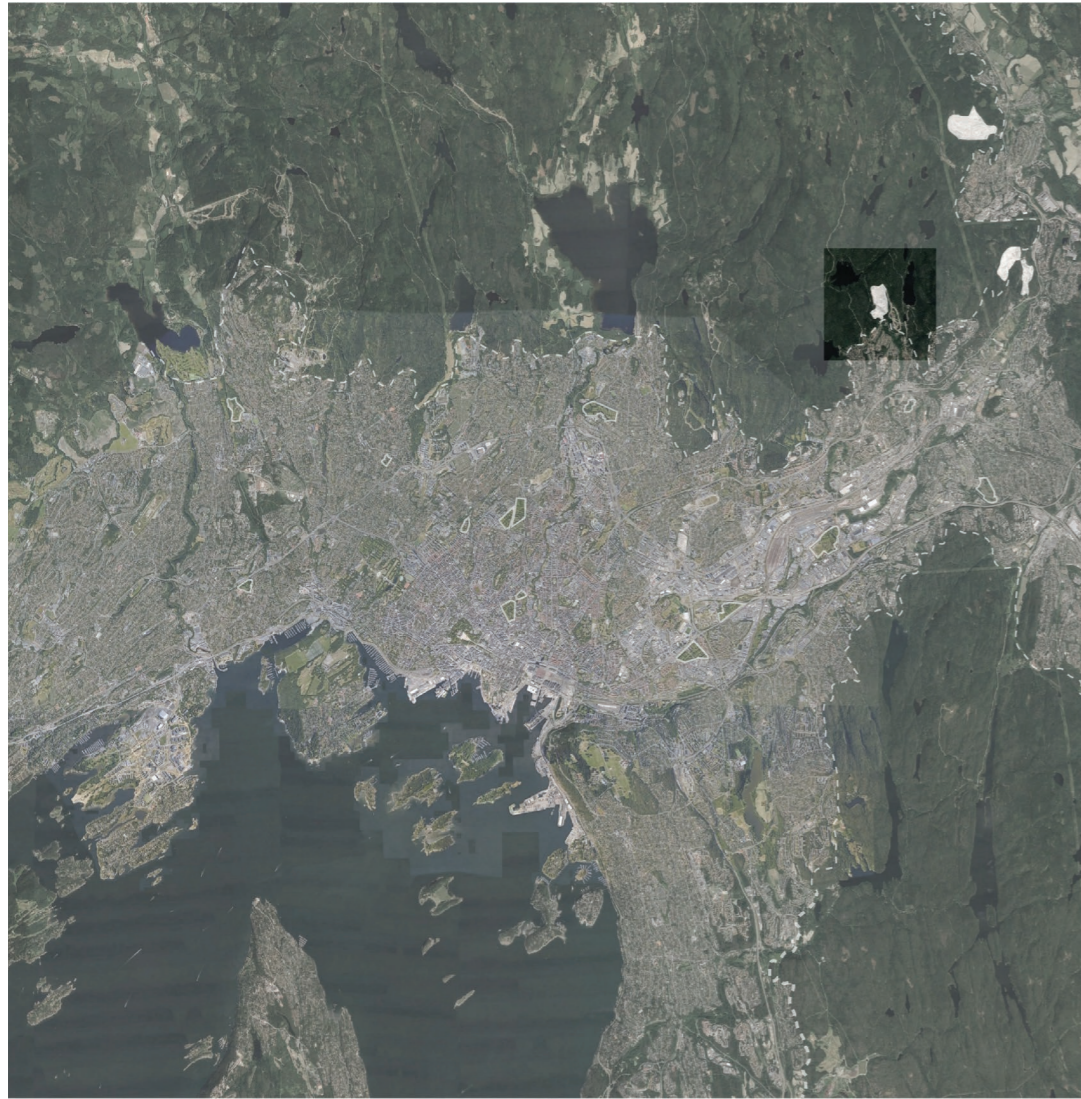
Máster d'Arquitectura del Paisatge -DUOT - UPC
ETSAB- Escola Tècnica Superior
d'Arquitectura de Barcelona
Avenida Diagonal, 649 piso 5
08028 Barcelona-Spain



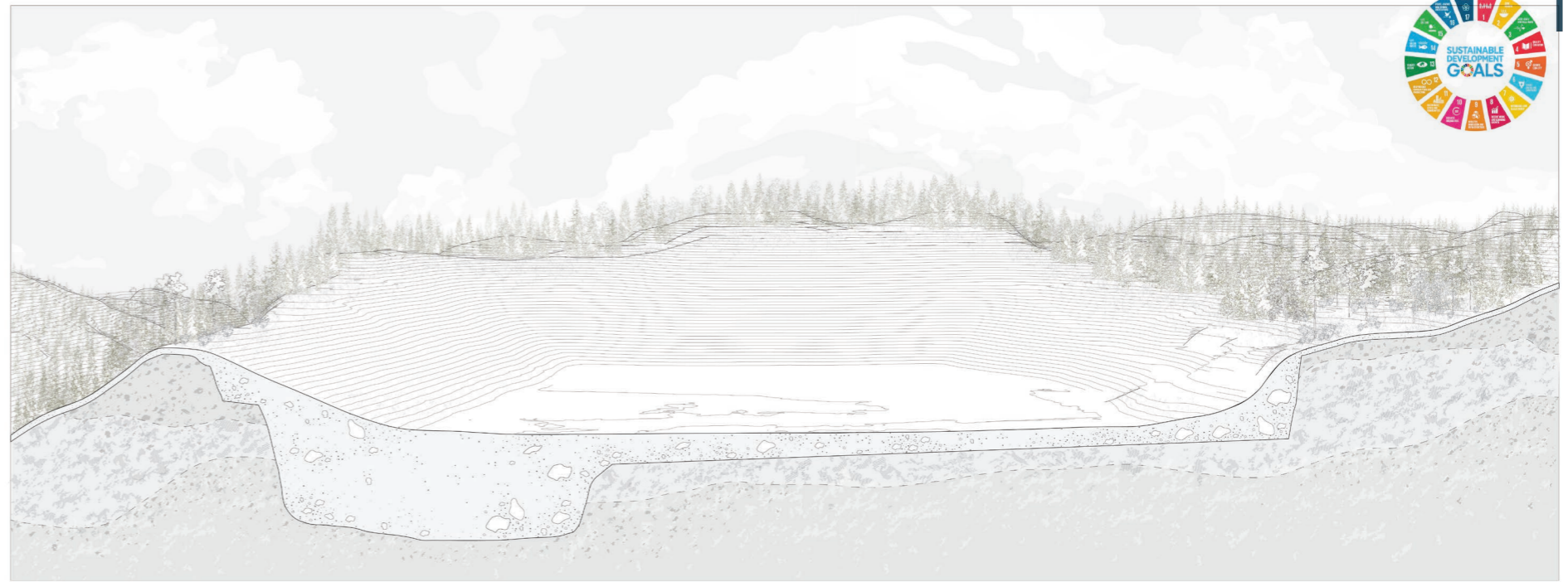
CLIMATE CHANGE AGAIN

11th International Biennial Landscape Barcelona

Barcelona September 2020
SCHOOL PRIZE



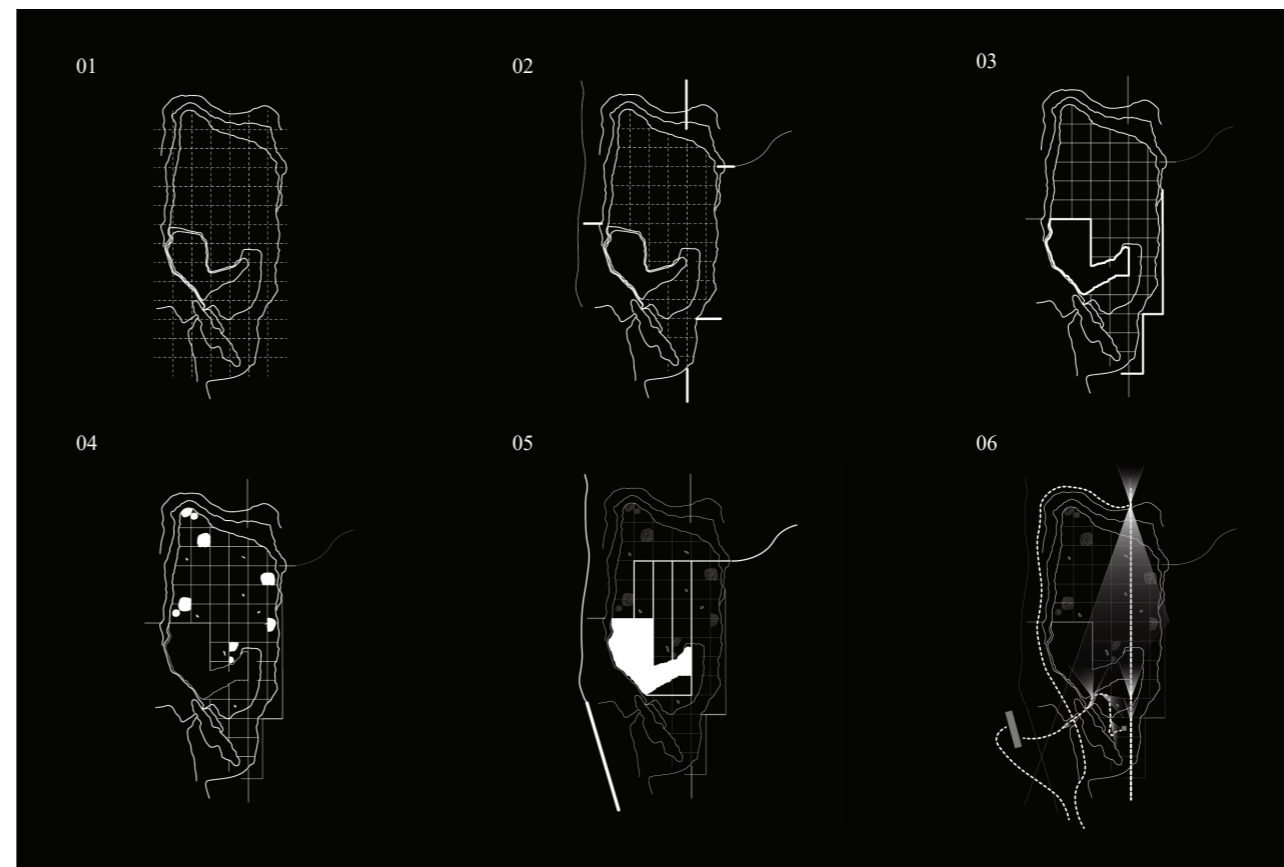
Huken quarry location in Oslo.
Existing cemeteries with outline, quarries in white.
Oslo marka border stapled.



Existing situation, underlying topography of bedrock and new topography of filled in materials.



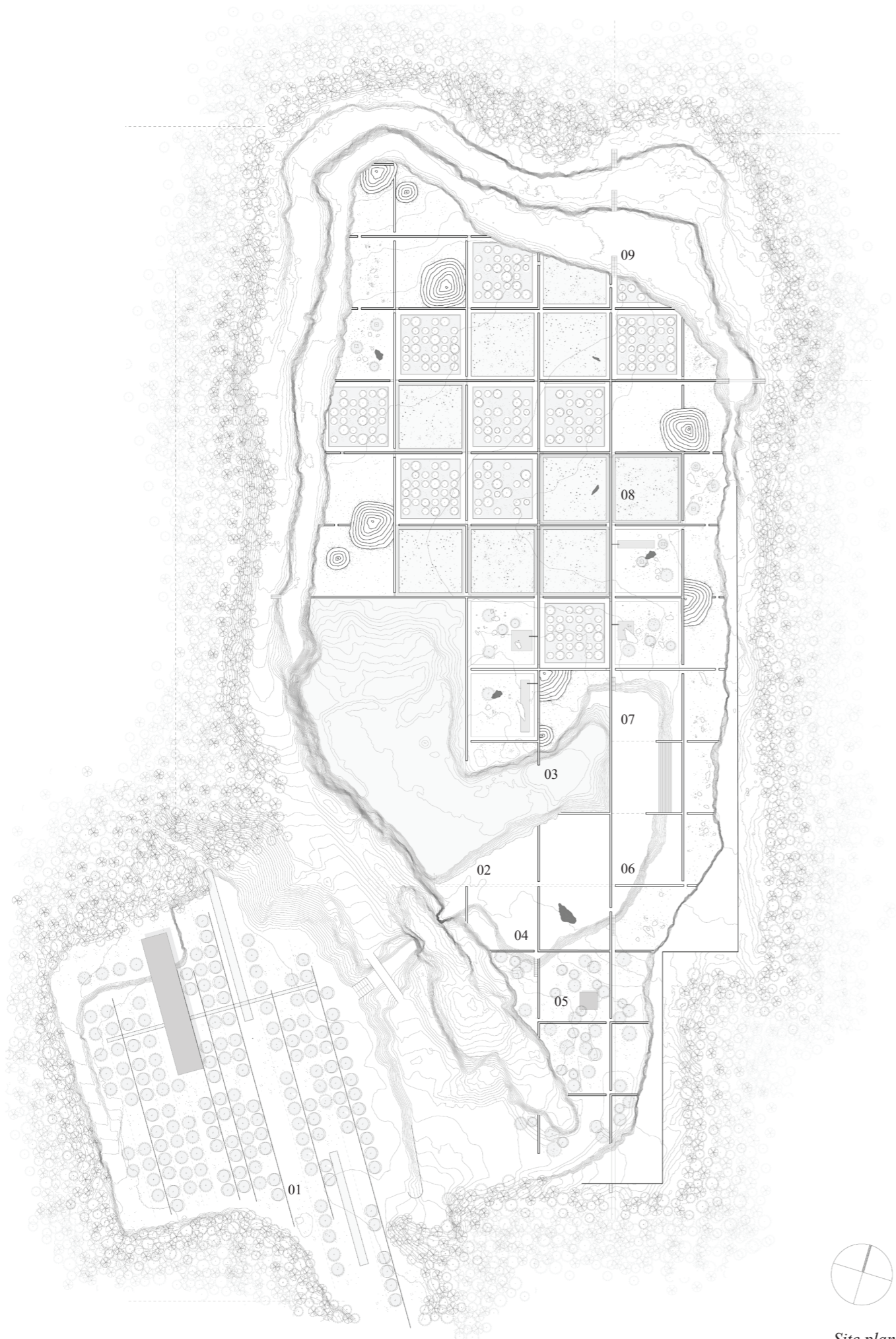
Overlay of sections: 2014, 2017, 2019. Length 600m



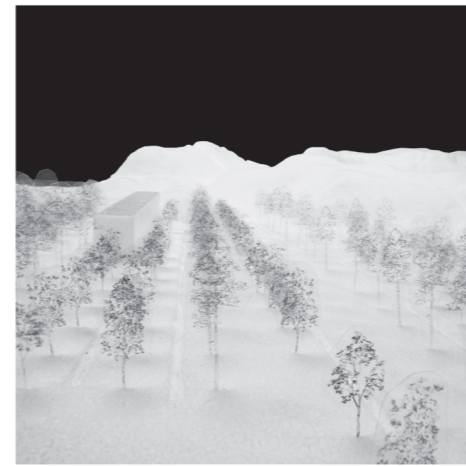
1971 - 2019: Reclining bedrock terraces as excavations proceed. Loose mounds and slopes are changing the landscape over time.

Design steps

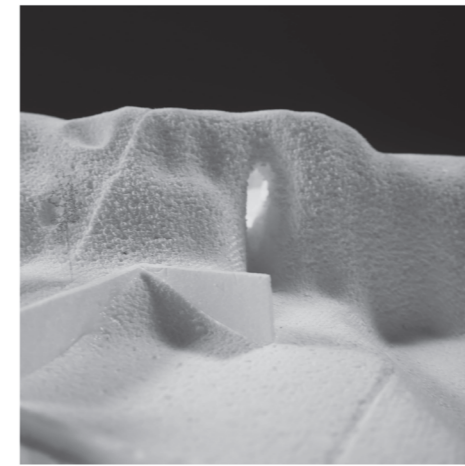
- 01: Reveal terraces, grid creates walls
- 02: Create connections to existing
- 03: Further excavations
- 04: Re-introduce mounds and megaliths
- 05: Walls carry water
- 06: Processional path



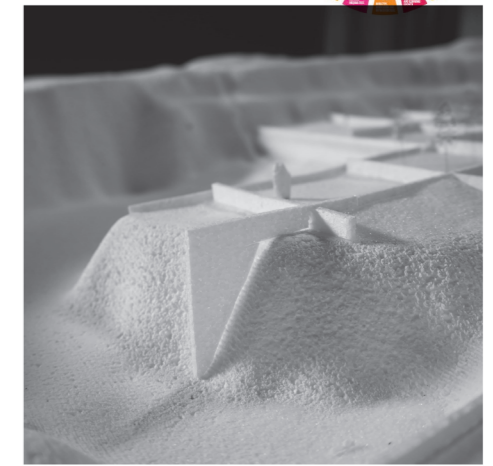
Site plan
Original dimensions 549mm x 841mm



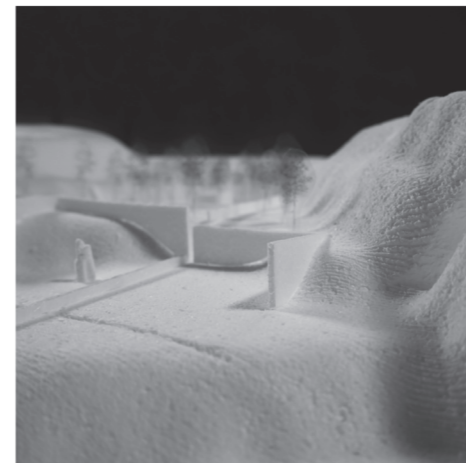
01



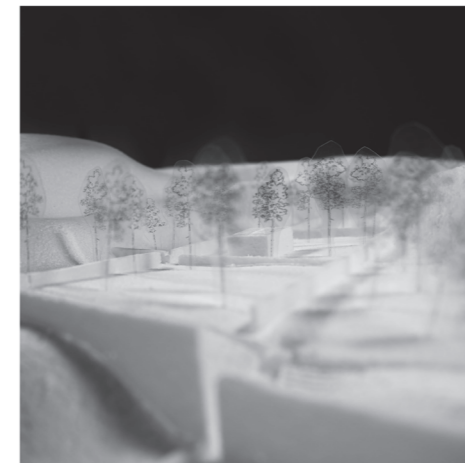
02



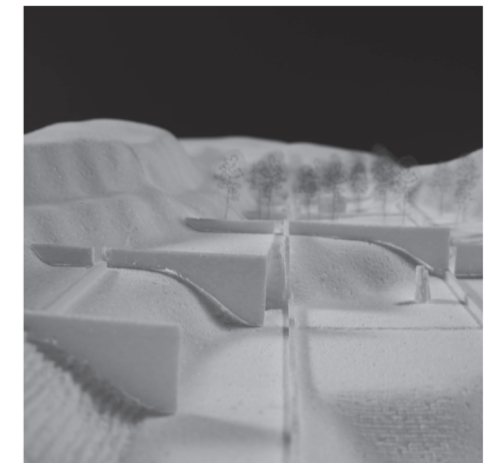
03



04



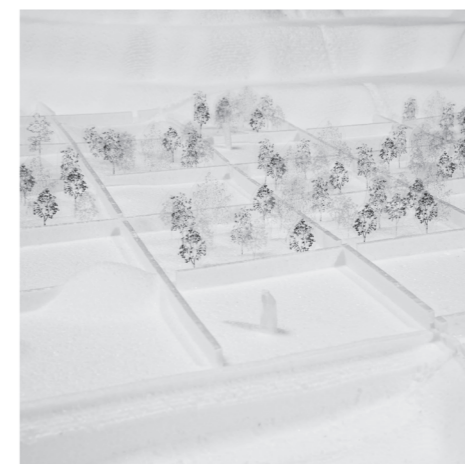
05



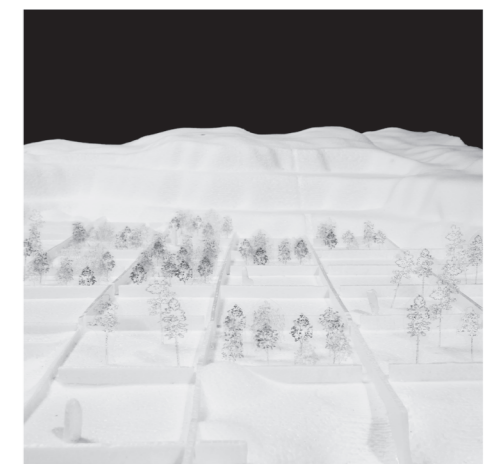
06



07



08

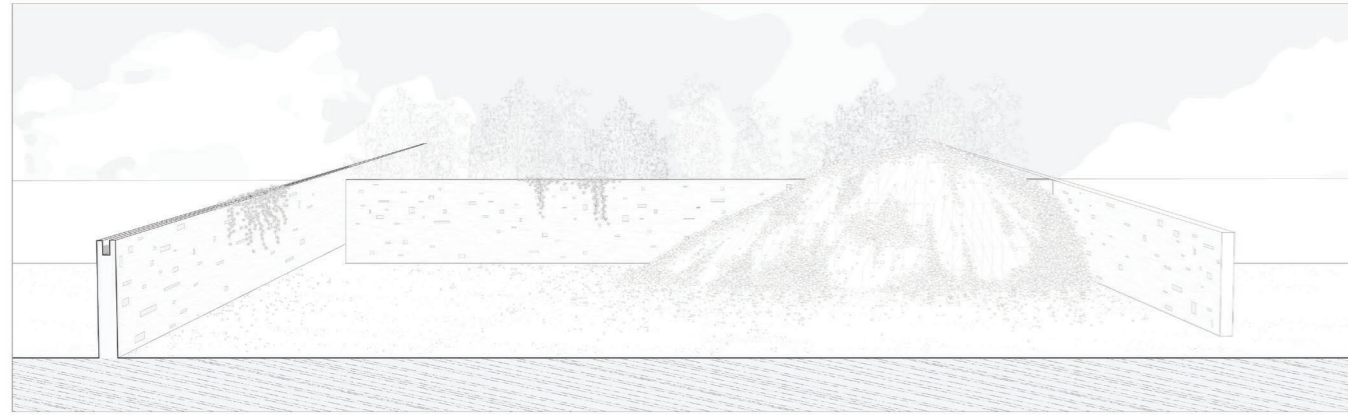


09

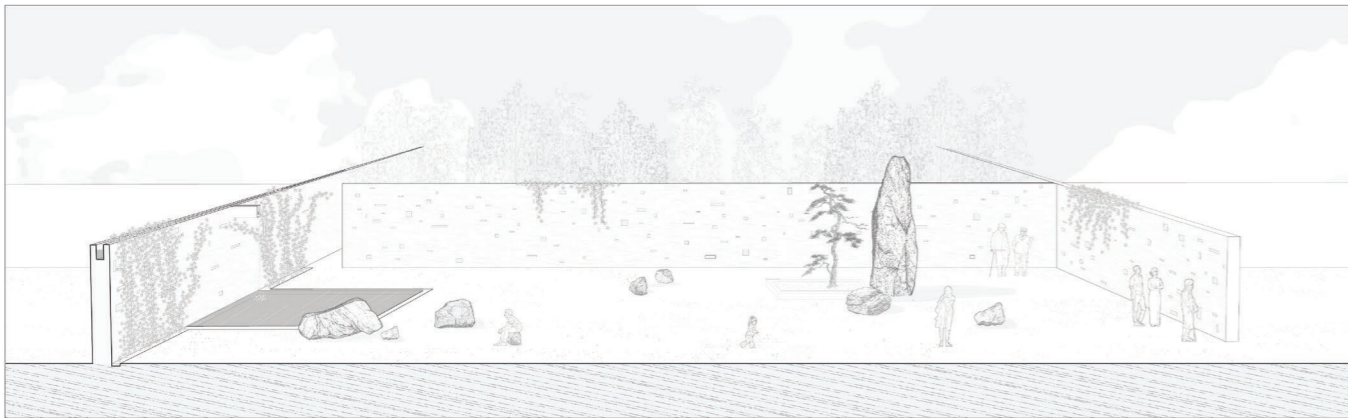




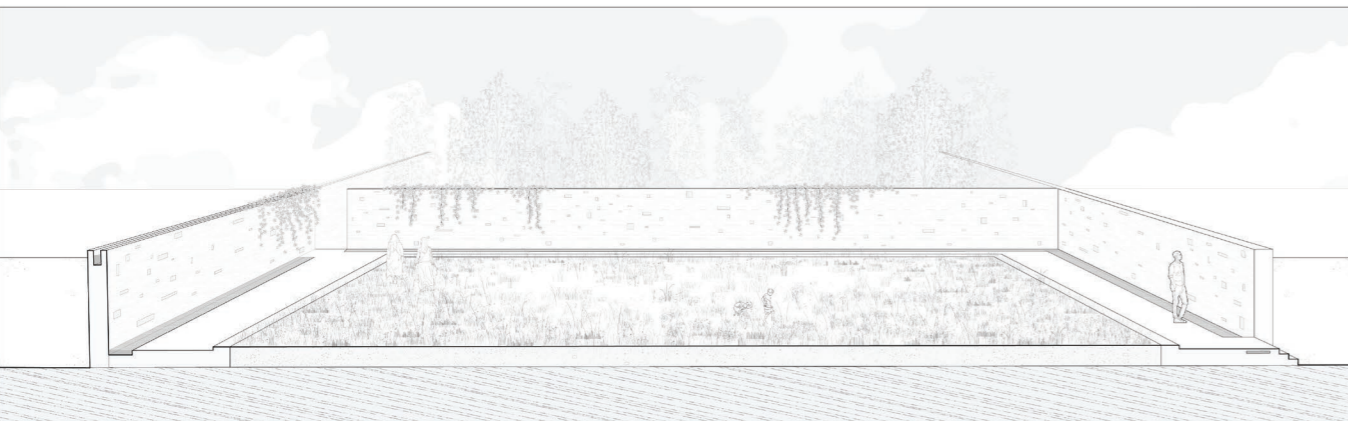
The Tumulus Garden



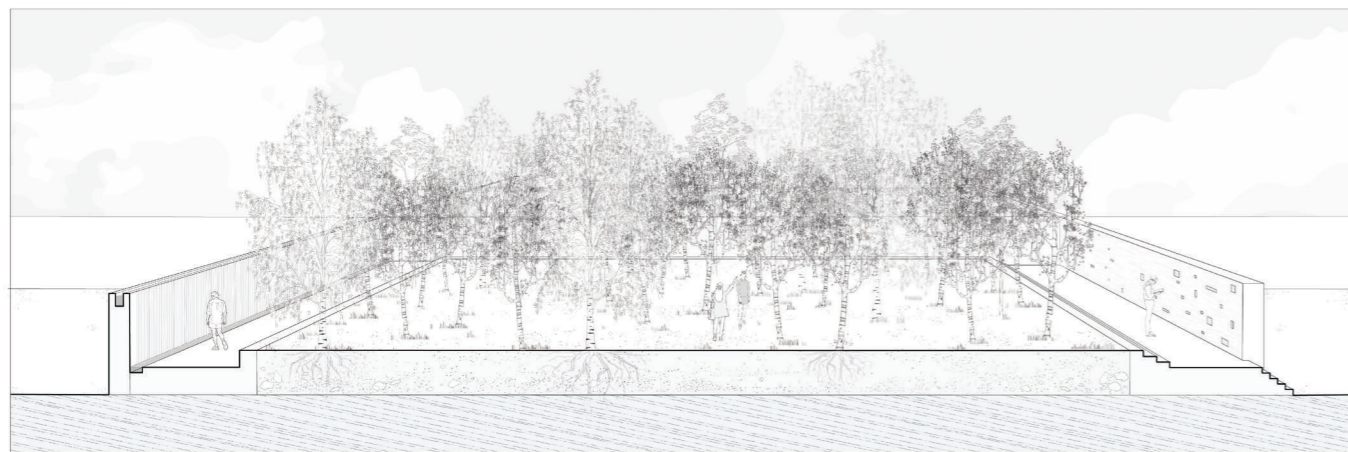
The Garden of Contemplation



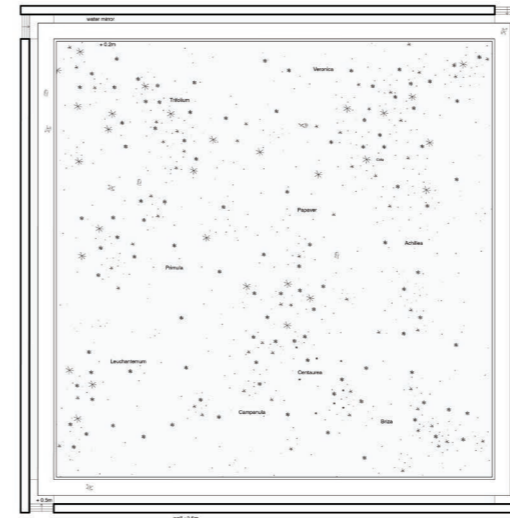
The Wildflower Meadow



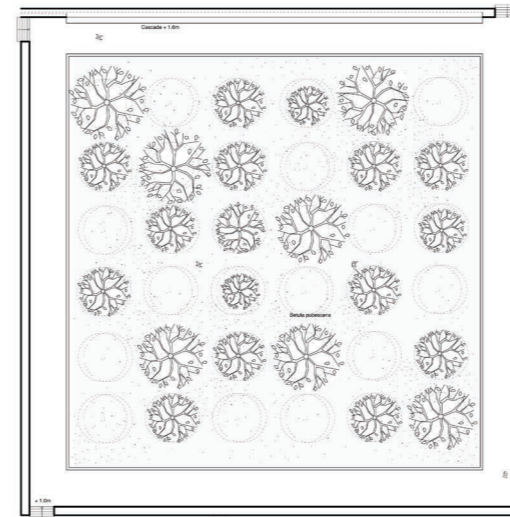
The Birch Grove



The Garden of Contemplation
The few elements allow the family in grief to focus all their energy inwards for reflection and contemplation.



The Wildflower Meadow
Spreading the soil of the deceased together with elected wildflower seeds the gravel garden will over time become a colourful meadow.



The Birch Grove
With a young birch tree picked from the nursery, the tree is planted together with the soil from the deceased. The gardens, treated like healing gardens are meant to help those in grief to accept their loss through maintaining and caring for the flowers and trees.