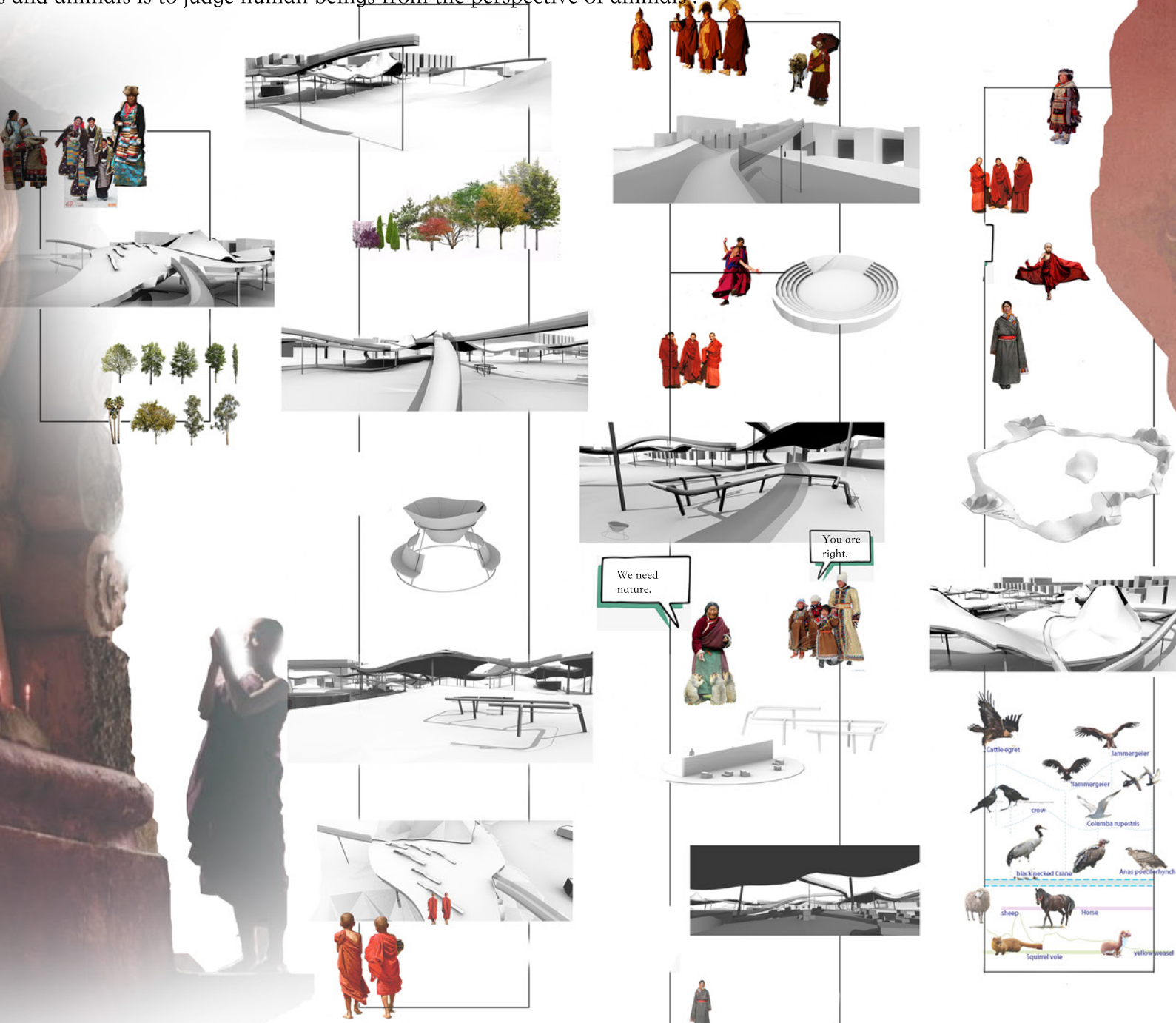
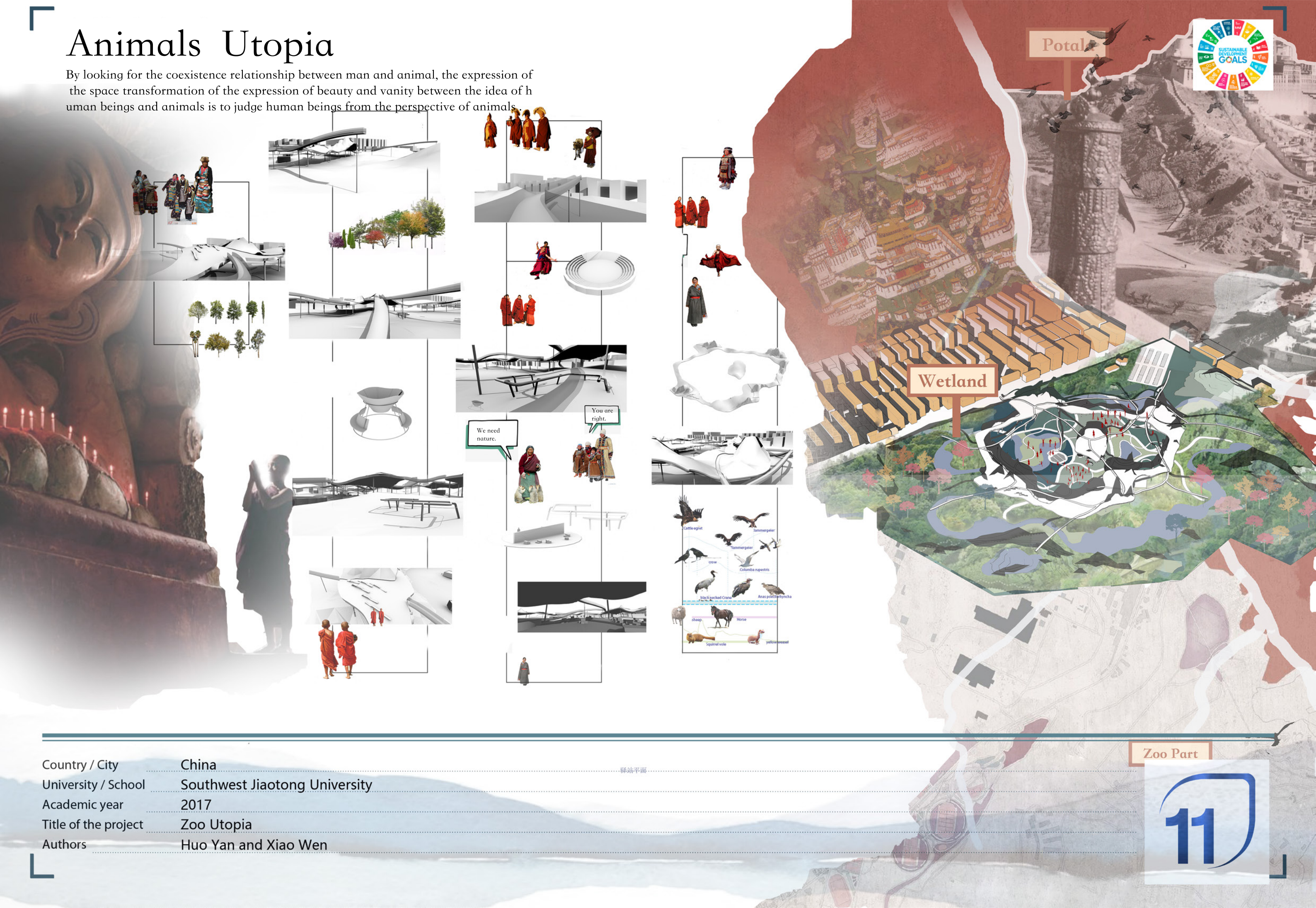


Animals Utopia

By looking for the coexistence relationship between man and animal, the expression of the space transformation of the expression of beauty and vanity between the idea of human beings and animals is to judge human beings from the perspective of animals.



Country / City China
 University / School Southwest Jiaotong University
 Academic year 2017
 Title of the project Zoo Utopia
 Authors Huo Yan and Xiao Wen

Zoo Part



TECHNICAL DOSSIER

Title of the project Zoo Utopia
Authors Huo Yan , Xiao Wen
Title of the course Undergraduated Design
Academic year 2017
Teaching Staff Qian Liyuan, Huang Rui, Jia Lingli, Zhang Sining, Fan Li
Department/Section/Program of belonging Landscape architecture
University/School Southwest Jiaotong University



Written statement, short description of the project in English, no more than 250 words

By looking for the coexistence relationship between man and animal, the expression of the space transformation of the expression of beauty and vanity between the idea of human beings and animals is to judge human beings from the perspective of animals To judge human beings The zoo siton is also the place where animals gather wetlands Is the transitional space of city and nature Using that sense of drama to arouse human reflection hope to express the kind of equal relationship between Tibetan people and animals to fundamentally achieve the purpose of climate control.



CLIMATE CHANGE AGAIN

11th International Biennial Landscape Barcelona

For further information
Máster d'Arquitectura del Paisatge -DUOT - UPC
T: + 34 93 401 64 11 / +34 93 552 0842
Contact via email at: biennial.paisatge@upc.edu

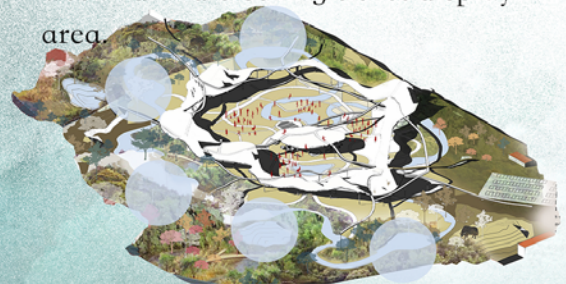
Máster d'Arquitectura del Paisatge -DUOT - UPC
ETSAB- Escola Tècnica Superior
d'Arquitectura de Barcelona
Avenida Diagonal, 649 piso 5
08028 Barcelona-S pain

Barcelona September 2020
SCHOOL PRIZE

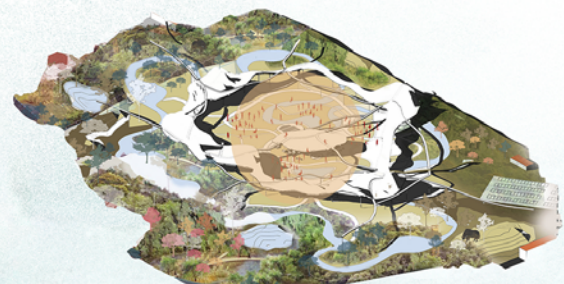
Animals Utopia



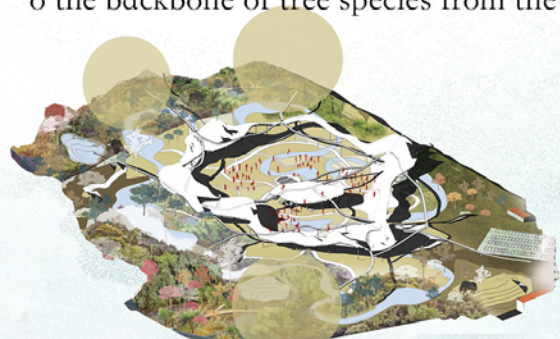
1 Rainwater purification tour line
Wetland water purification process
on the tour line line special planni
ng Western people so water-focused
drift head through the precipitation
area flow-soluble surface guaran
teed land finally swim to the Bailan
wetland and clothing ticket display
area



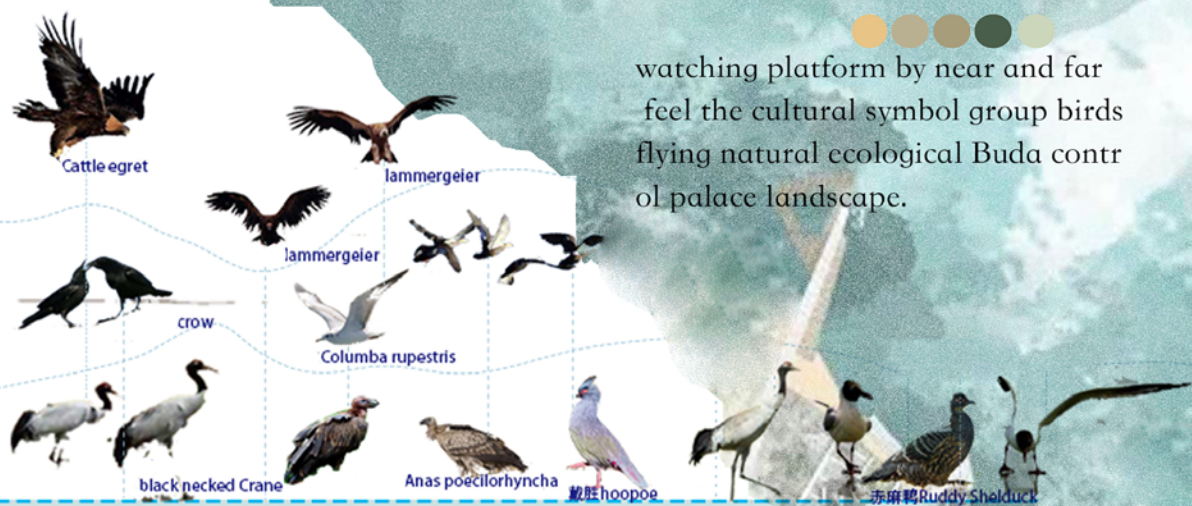
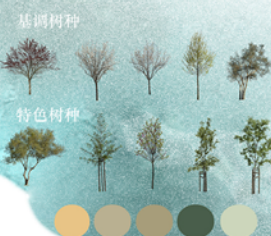
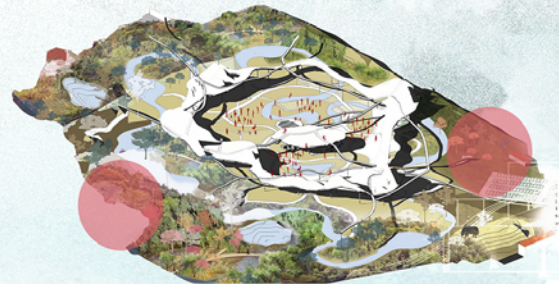
2 Birds Ecological Jungle Area on the
highland wood-breeding suitable film
forest planting and restoration of rare
bird living conditions In the bird watc
hing self-path wide center at the same
time to carry out cultural orientation
construction guide visitors in the bird



3 ecological forest restoration area on
the advantages of natural growth fin
al lying to restore protection Create pr
tection animal habitat no human int
o people only in special circumstances
allow management and researchers int
o the backbone of tree species from the



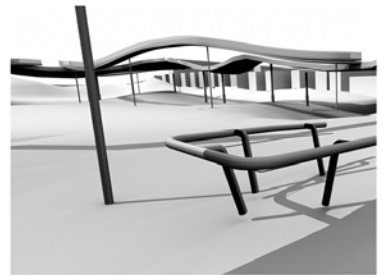
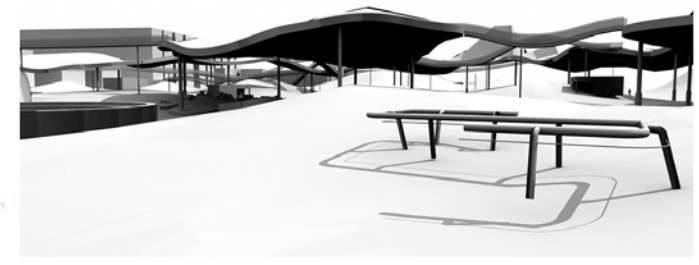
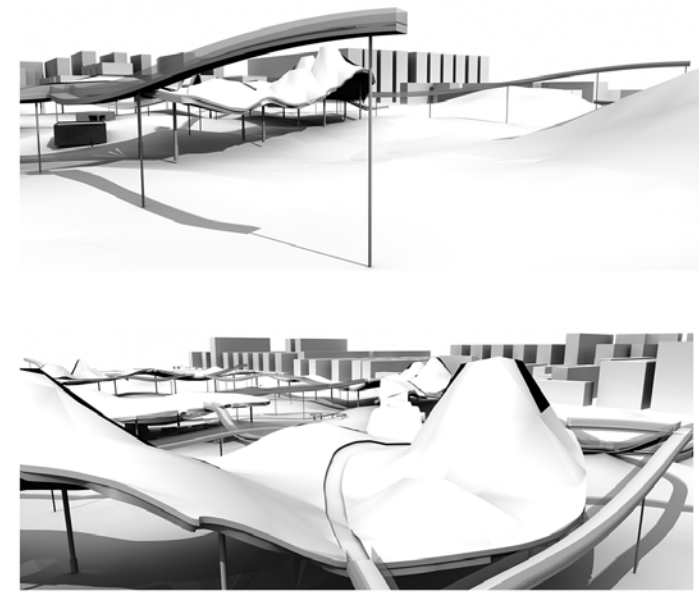
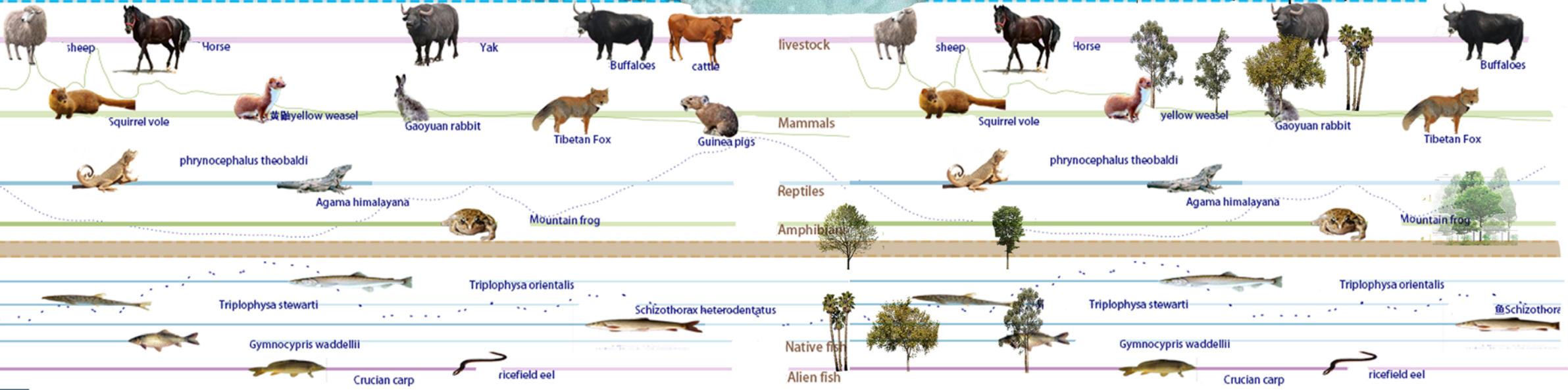
4 jungle path experience area people
enter the ecological body transmission
area from the upper sub-sub-turn Mei
Cho irrigation grass and other adapta
tion vegetation from the forest inserted
natural cause road at the same time
afforestation crown lower dynamic hab



watching platform by near and far
feel the cultural symbol group birds
flying natural ecological Buda contr
ol palace landscape.

mountain pine pine pine cypress birch
birch birch pine red leaf stone heather
dragon bile golden leaf virgin even the
herb ousony masculine masculine horse
artemisinin first artemisinin artemisinin
fennel fennel grass

itat allows visitors to close contact
with the animals shuttle forest.

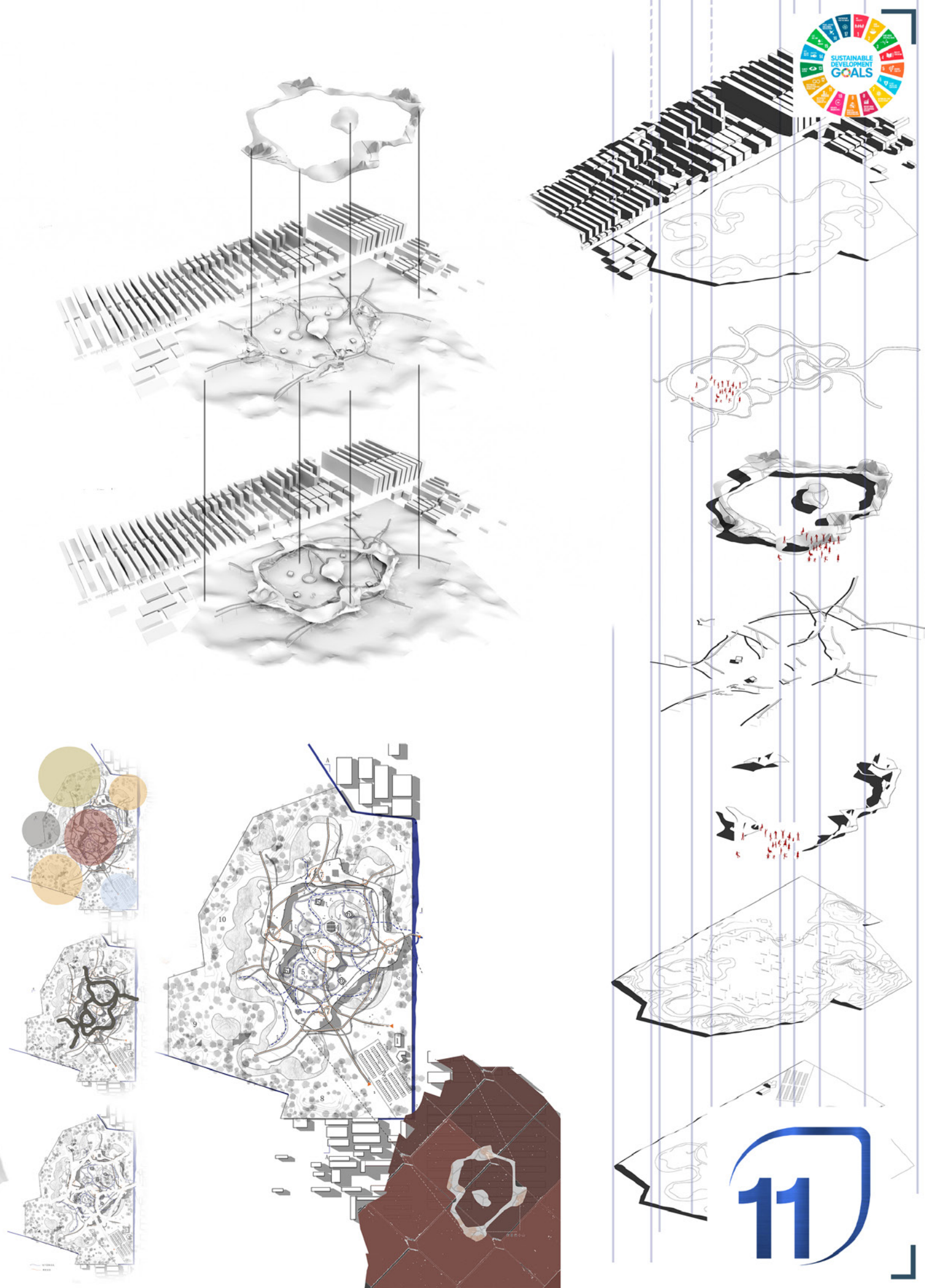


Animals Utopia

Ask about the coexistence relationship between man and animal , grasp ingested on the space transformation between the beautiful and vain is to look at humans from the animal's point of view to judge human beings Naturally the zoo of human beings Naturally is the wetland where animals gather, using that sense of drama to arouse human reflection hope to express the kind of equal relationship between Tibetans and animals.



公园设计



Animals Utopia



Lhasa is located at the western end of the Lhasa Valley Plain in the middle of the Yalu-Zangbu River basin with a history of 1300 years And is a political, economic and cultural center and transportation hub of Tibet's self-ruled region.

Identity limitation "The moment to the shelter" re-examine the space problem to create the infinite possibilities of knowledge To create the infinite possibilities of knowledge, the question of the coexistence relationship between people and animals, grasping and being seen space transformation beautiful reality and vanity also in the human and animal vision between the free definition of.



Human activity high lift lift isolated site people can be connected to the lift platform air corridor and animal safety. Ask about the coexistence relationship between man and animal, grasp ingested on the space transformation between the beautiful and vain is to look at humans from the animal's point of view to judge human beings Naturally the zoo of human beings Naturally is the wetland where animals gather, using that sense of drama to arouse human reflection hope to express the kind of equal relationship between Tibetans and animals.



site plan 1:1200