



Work 01

# The MORIA CAMP Project

A design initiative for **political climate change**

|                      |   |
|----------------------|---|
| Country / City       | Norway / Ås   |
| University / School  | Norwegian University of Life Sciences — NMBU / School of Landscape Architecture   |
| Academic year        | 2020  |
| Title of the project | NYMORIA — The Moria Camp Project (Lesvos Island, Greece)  |
| Authors              | Ørjan Eggebø, Taale Kjøs, Tone Aamdal Rislåa, Ragnhild Hagen Strand, Mikael Oscar Loum<br>(together with: Cecilie Agerup, Sapir Margaret Aziel, Christian Dierk, Martin Lucas Sortland Eick, Hanna Sofie Schou Grytli, Magnus Horgen Rekkedal, Philip Arthur Nessa Sæther, Eirin Tømoeen) |





## TECHNICAL DOSSIER

|   |  |
|---|--|
| Title of the project                    | <b>NYMORIA — The Moria Camp Project</b> (Lesvos Island, Greece)  |
| Authors                                 | <b>Ørjan Eggebo, Taale Kjøs, Tone Aamdal Rislåa, Ragnhild Hagen Strand, Mikael Oscar Loum</b> (together with: <b>Cecilie Agerup, Sapir Margaret Azriel, Christian Dierk, Martin Lucas Sortland Eick, Hanna Sofie Schou Grytli, Magnus Horgen Rekkedal, Philip Arthur Nessa Sæther, Eirin Tormoen</b> ) |
| Title of the course                     | Analysis and design of contested landscapes  |
| Academic year                           | 2020   |
| Teaching Staff                          | <b>Joerg Rekittke and Kerstin Potthoff</b>   |
| Department/Section/Program of belonging | Faculty of Landscape and Society / School of Landscape Architecture<br>Master of Landscape Architecture for Global Sustainability Programme  |
| University/School                       | Norwegian University of Life Sciences — NMBU   |



Written statement, short description of the project in English, no more than 250 words

For the studio project at hand, we chose migration as a guiding subject, the Greek island of Lesvos as the location for analytical fieldwork, and a processing centre for asylum seekers and other migrants in Moria as study and design case. The **Moria Camp**, constituted by disused military barracks transformed into one of the variously-named reception and identification centres in Southern Europe, made the headlines, because for years yet it is hopelessly overcrowded, and its Greek governor resigned in 2019—tired, and despaired.

In our professional role as spatial designers and landscape architects, on no account coming as aid workers, we approach the intricate situation in Moria by bringing the raw figures to our mind. In April 2020, an estimated 21,000 people were insufficiently sheltered by shipping containers, tents, and makeshift structures, while the existent facilities had been laid out for 3,000 people only. The amply documented squalid living conditions in the camp, repeatedly criticized by humanitarian organizations, don't come as a surprise. Thousands of people live in makeshift tents of plastic sheeting in an olive grove dubbed 'the jungle', beyond the official camp area. Our core assignment is the elementary but complex meddling with the collective design of an adequate reception and identification centre structure, inclusive effectual facilities for everyone in the centre (camp); to make humane living conditions possible.

**Our project constitutes a suggestion for political climate change towards humanity and solidarity.**

For further information  
Máster d'Arquitectura del Paisatge -DUOT - UPC

T: + 34 93 401 64 11 / +34 93 552 0842  
Contact via email at: [biennal.paisatge@upc.edu](mailto:biennal.paisatge@upc.edu)

Máster d'Arquitectura del Paisatge -DUOT - UPC  
ETSAB- Escola Tècnica Superior  
d'Arquitectura de Barcelona  
Avenida Diagonal, 649 piso 5  
08028 Barcelona-Spain



# CLIMATE CHANGE AGAIN

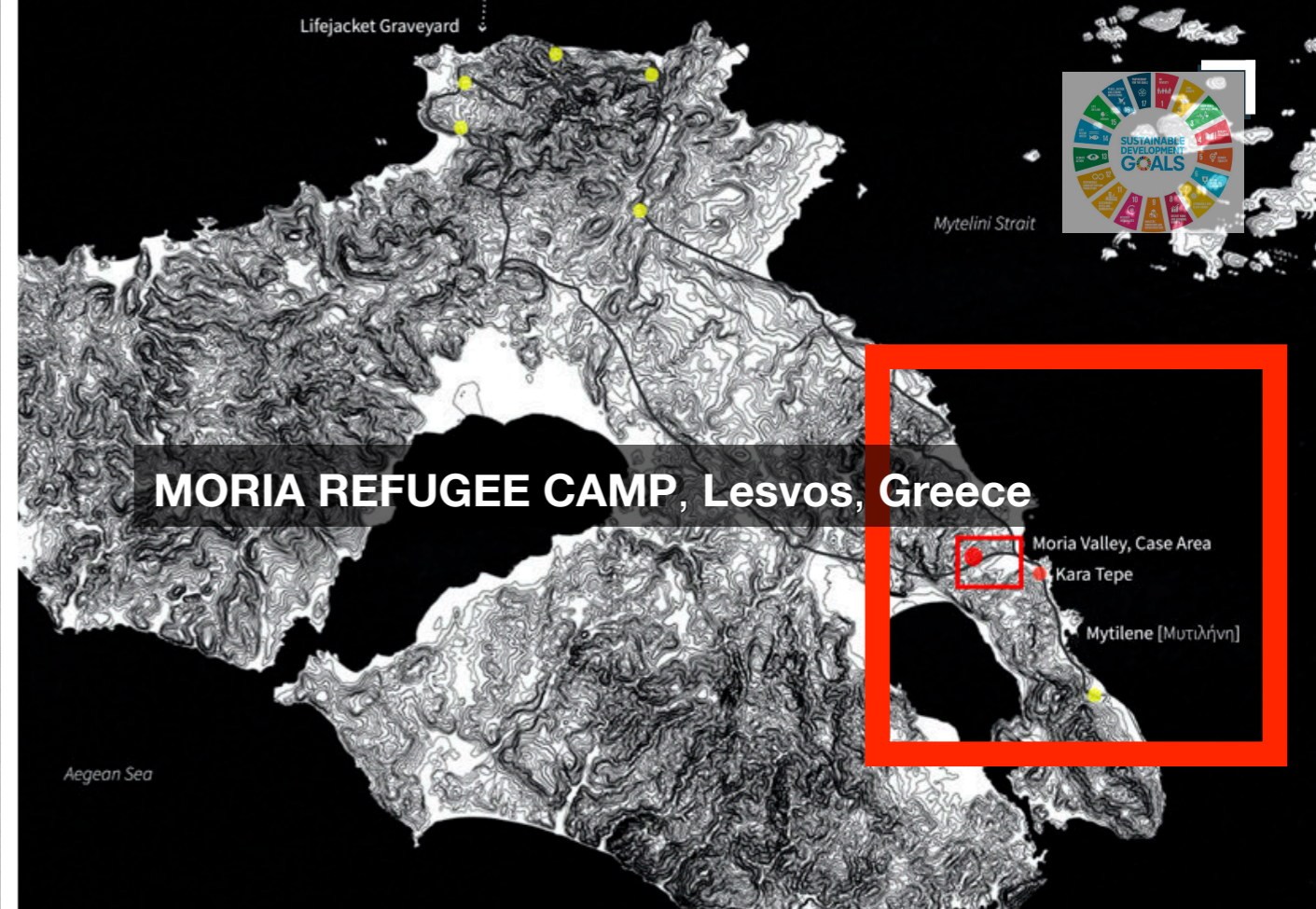
11th International Biennial Landscape Barcelona

Barcelona September 2020  
SCHOOL PRIZE





NMBU students and tutors in the field (2020)



MORIA REFUGEE CAMP, Lesvos, Greece

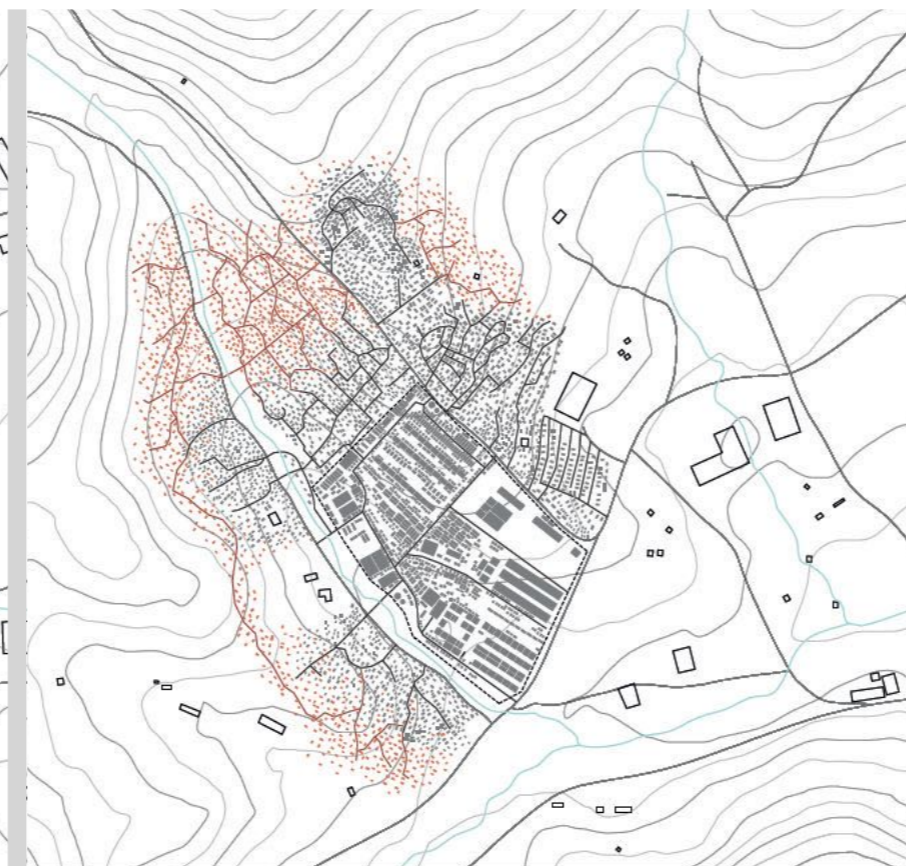


Moria Camp: Planned for 3000 people. Currently inhabited by 21000 !





Designing a settlement for 30000 migrants ... that gradually becomes a CITY for 30000 New Europeans.







# Design of a New Flag for a New City for New Europeans

In a clear reference to 'The Image of Europe' by OMA (2001–ongoing)

