



Country / City Australia / Melbourne
University / School RMIT University / School of Architecture and Urban Design
Academic year 2019
Title of the project Enclaves and Field Conservation
Authors Thomas Flugge

TECHNICAL DOSSIER

Title of the project	Enclaves and Field Conservation
Authors	Thomas Flugge
Title of the course	Landscape Architecture Project B
Academic year	2019
Teaching Staff	Kate Church, Kyle Bush, Tom Black
Department/Section/Program of belonging	Landscape Architecture Discipline / Master of Landscape Architecture
University/School	RMIT University / School of Architecture and Urban Design



Written statement, short description of the project in English, no more than 250 words

This body of work seeks to use the protective notion of the enclave as a tool in the collaborative mapping and identification of key water moments and key cultural moments in a landscape. Both moments, Reading Landscape and Reading Country, require an identification and expansion of the enclave; allowing the boundaries to be re-negotiated in order to provide a range of adaptive programs. Reading Landscape proposes that an understanding of hydrological systems through a reading of the contours can identify optimal water harvesting locations. Reading Country proposes that landscape architecture can play a role in the engagement of Aboriginal cultural sites, enframing and protecting their stories and relationships through the power of the enclave.

This project also pursues a constant mapping and reworking of site through three fields of knowledge: Agriculture, Conservation, and Aboriginal. It uses these to address different qualities in the landscape: moments that are more subtle than a spectacular view but that tell stories of connection between culture, water, and land. These stories are incredibly powerful, protected, and conserved through the power of collaborative design and field conservation.

Tom would like to thank the Culpra Milli Aboriginal Corporation, and in particular Uncle Barry and Sophia Pearce, for their collaboration and support. Thank you to the people of the Barkindji Nation for their sharing of knowledge and generosity that was invaluable to the following work.

For further information
Máster d'Arquitectura del Paisatge -DUOT - UPC

T: + 34 93 401 64 11 / +34 93 552 0842
Contact via email at: biennal.paisatge@upc.edu

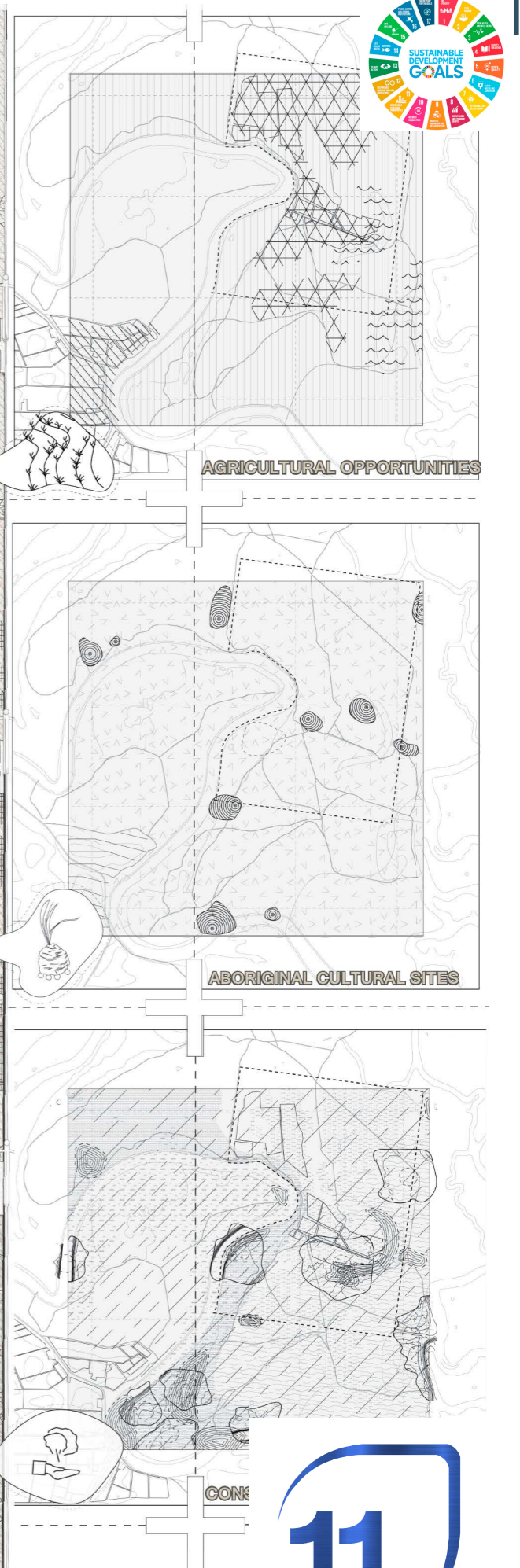
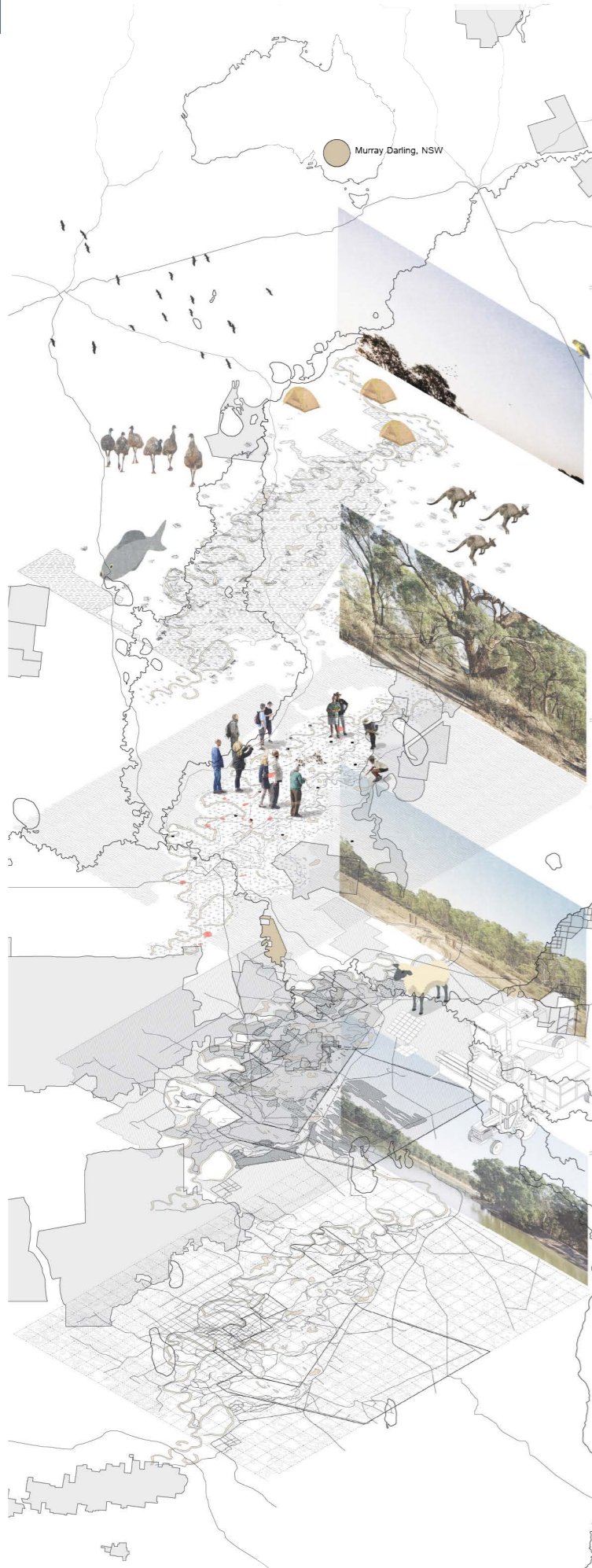
Máster d'Arquitectura del Paisatge -DUOT - UPC
ETSAB- Escola Tècnica Superior
d'Arquitectura de Barcelona
Avenida Diagonal, 649 piso 5
08028 Barcelona-Spain



CLIMATE CHANGE AGAIN

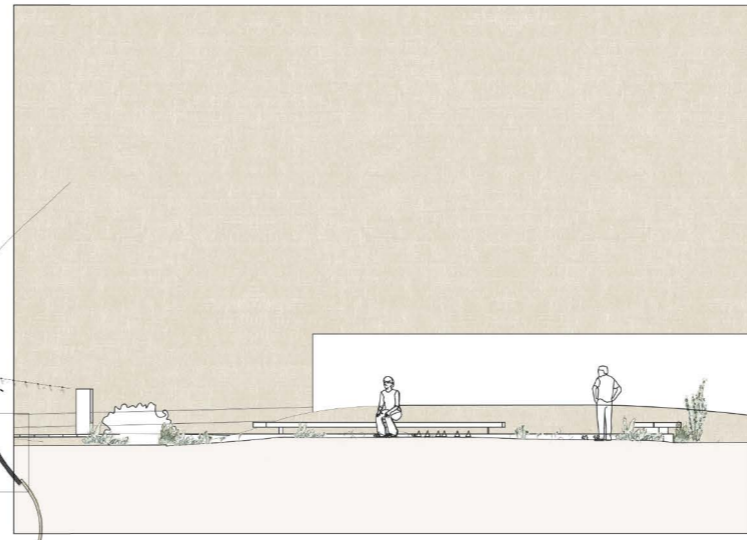
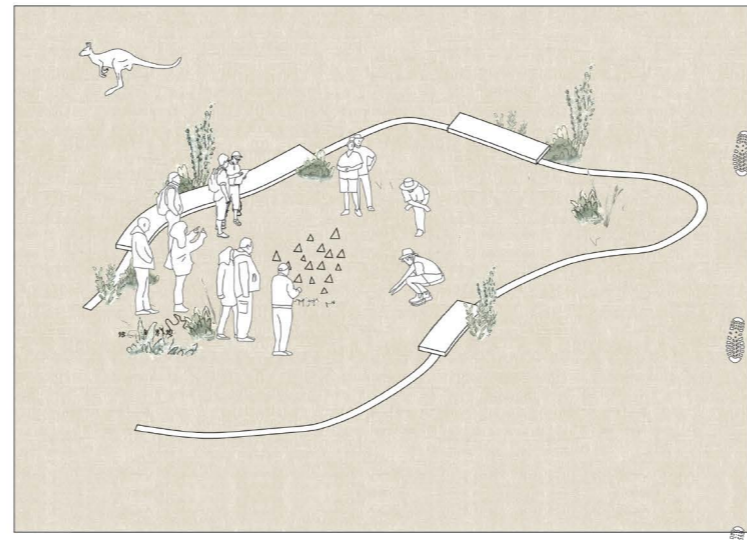
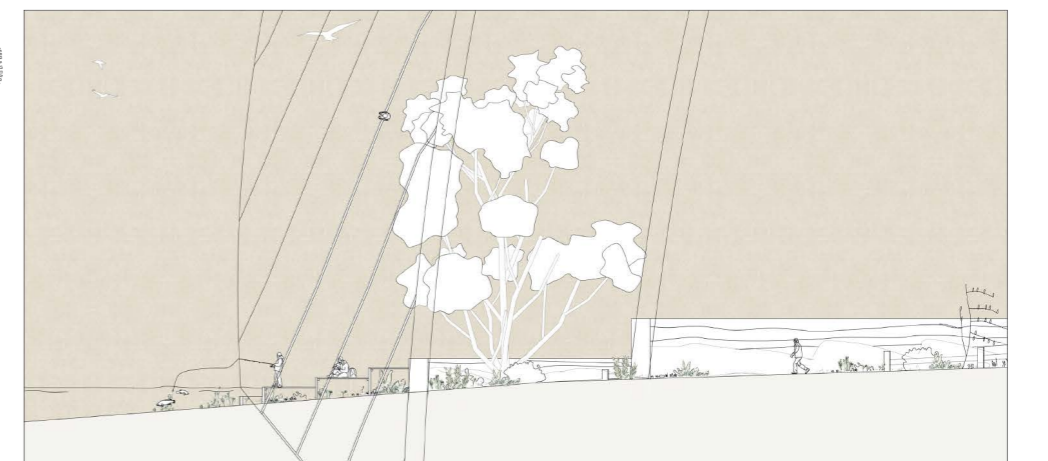
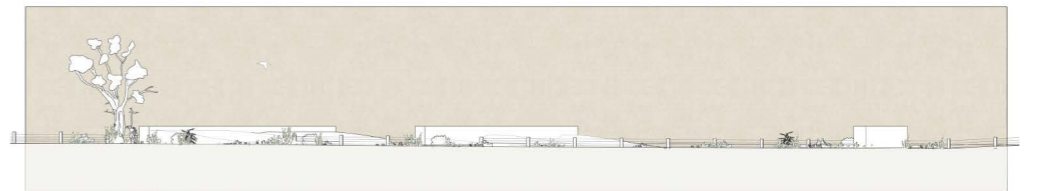
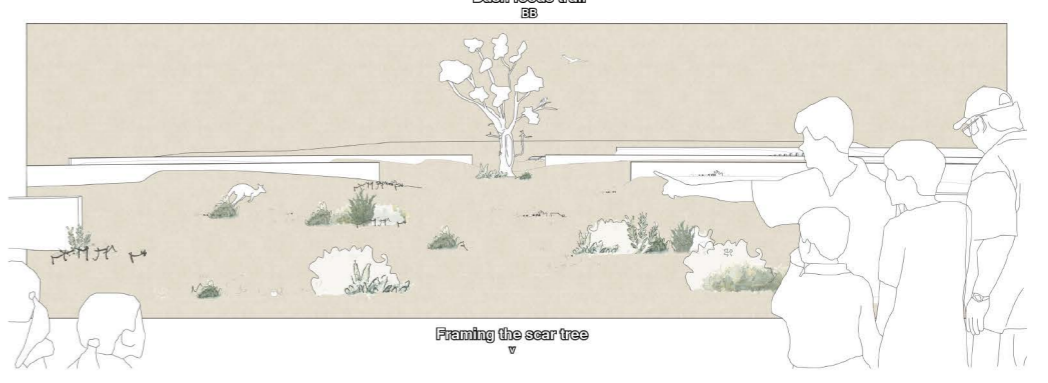
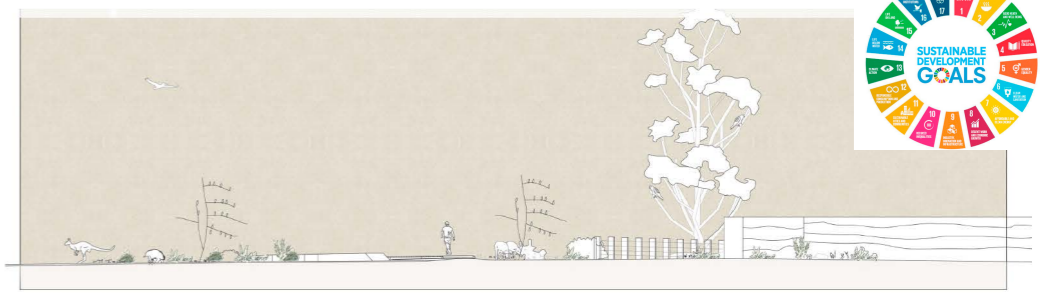
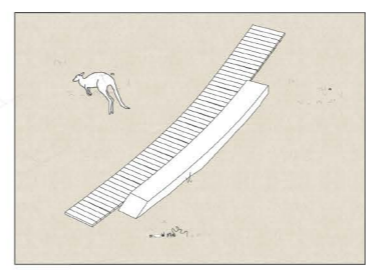
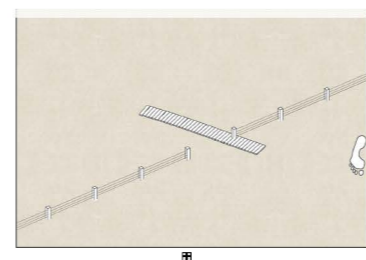
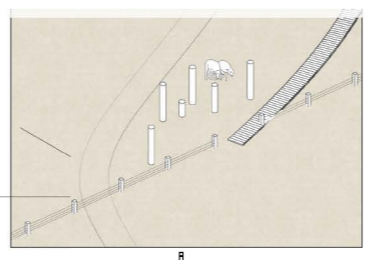
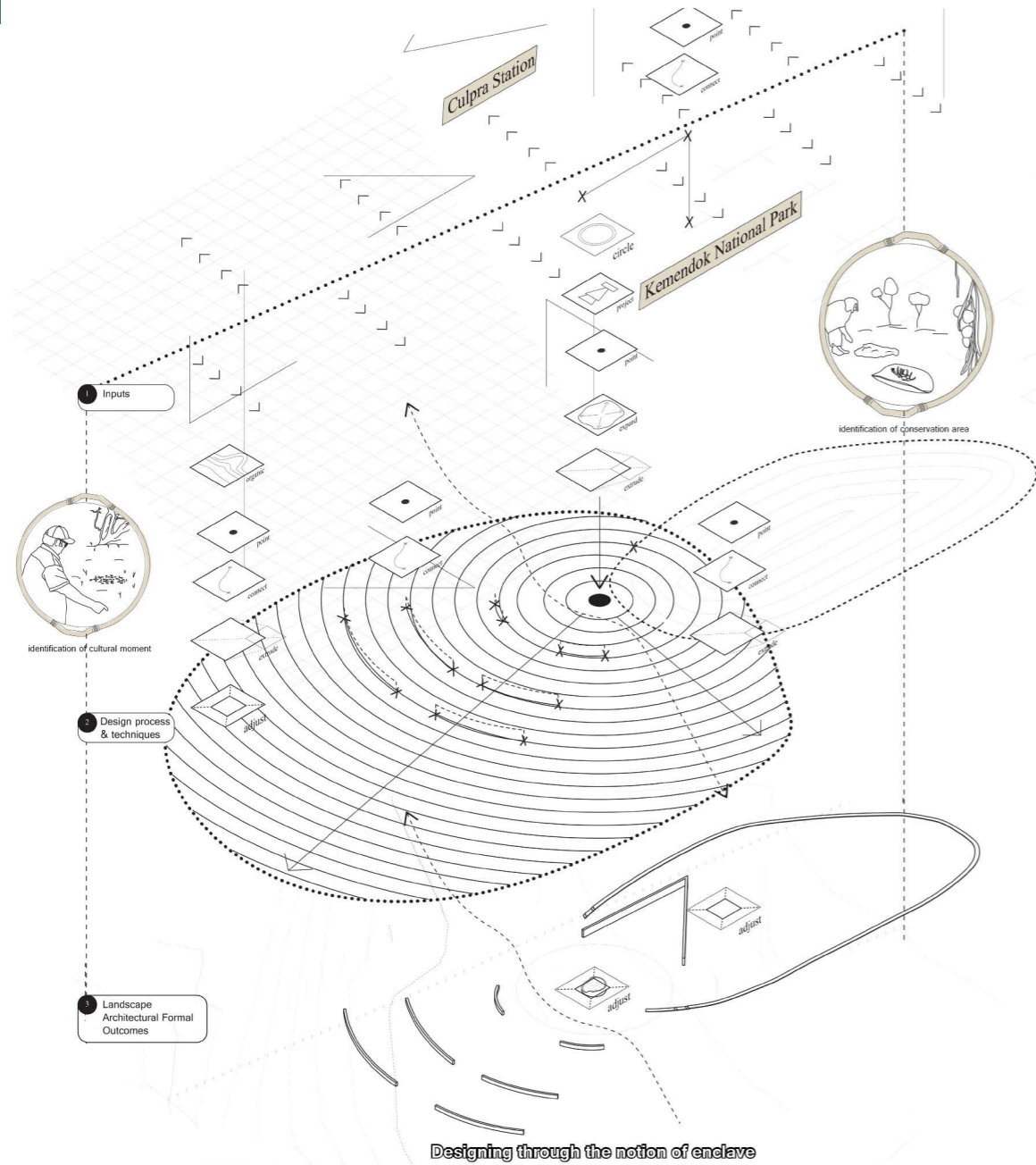
11th International Biennial Landscape Barcelona

Barcelona September 2020
SCHOOL PRIZE



PROTECTING KEY MOMENTS AT CULPRA STATION & KEMENDOK NATIONAL



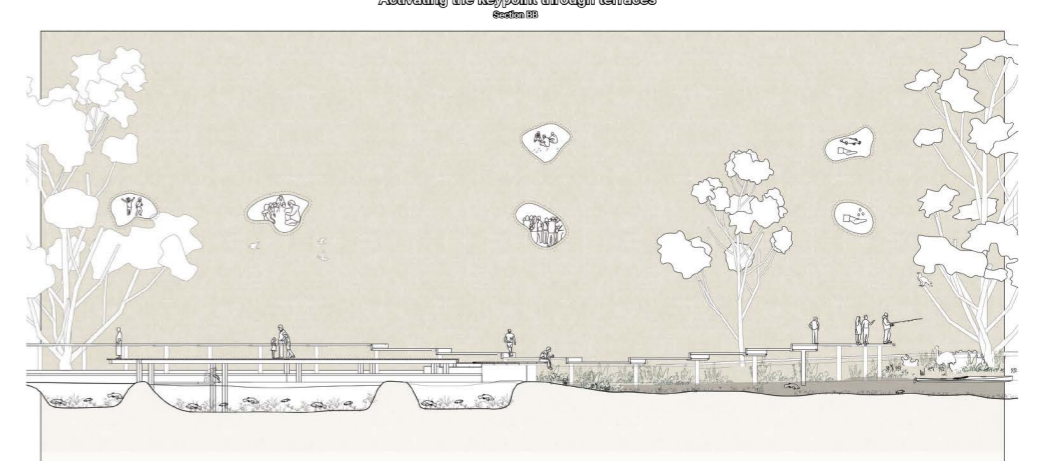
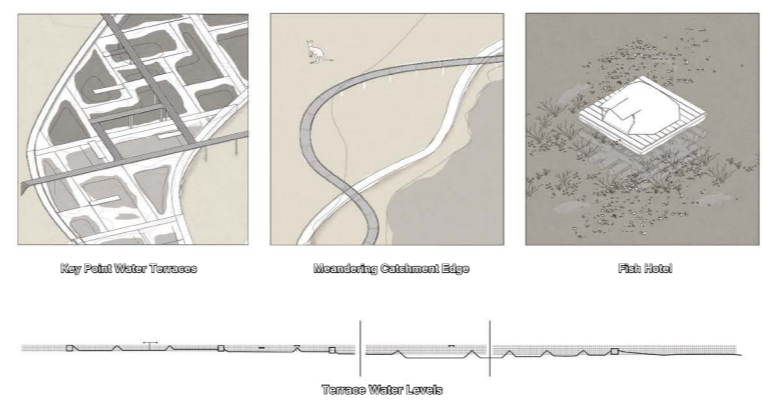
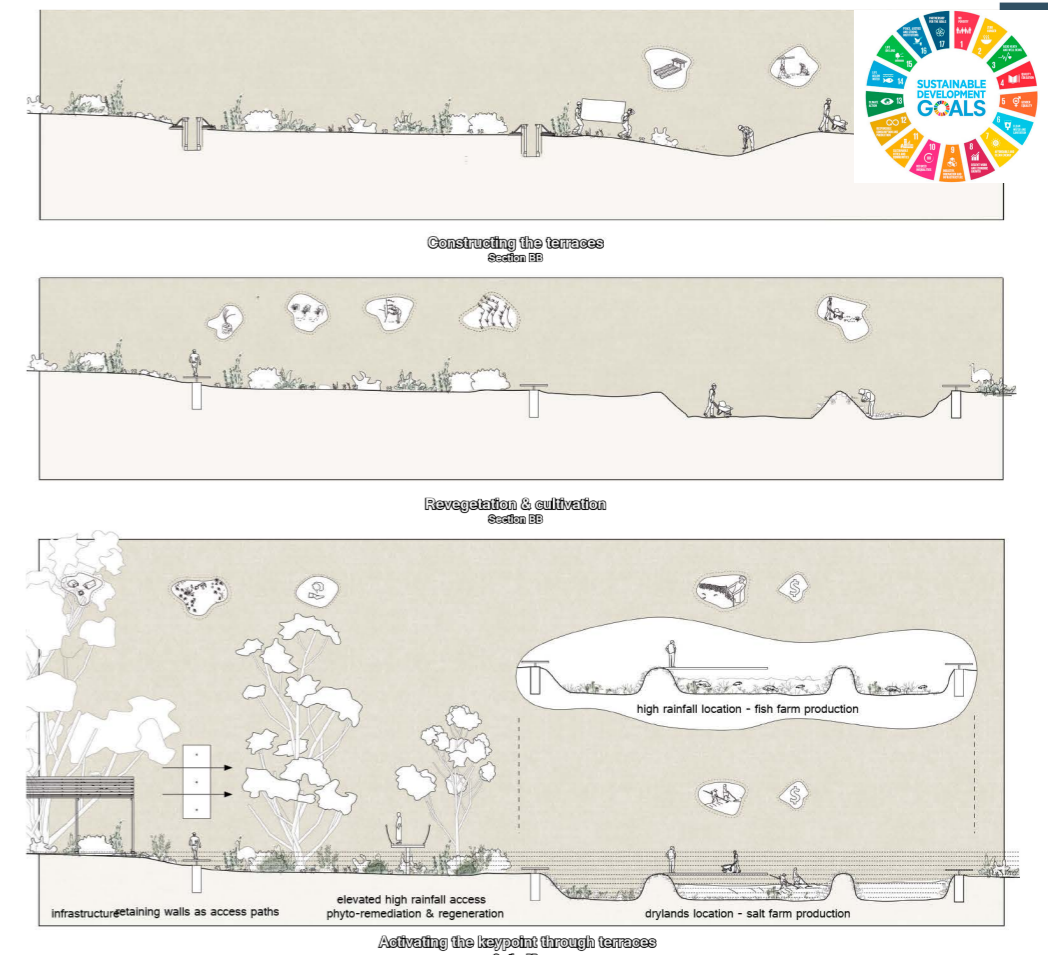
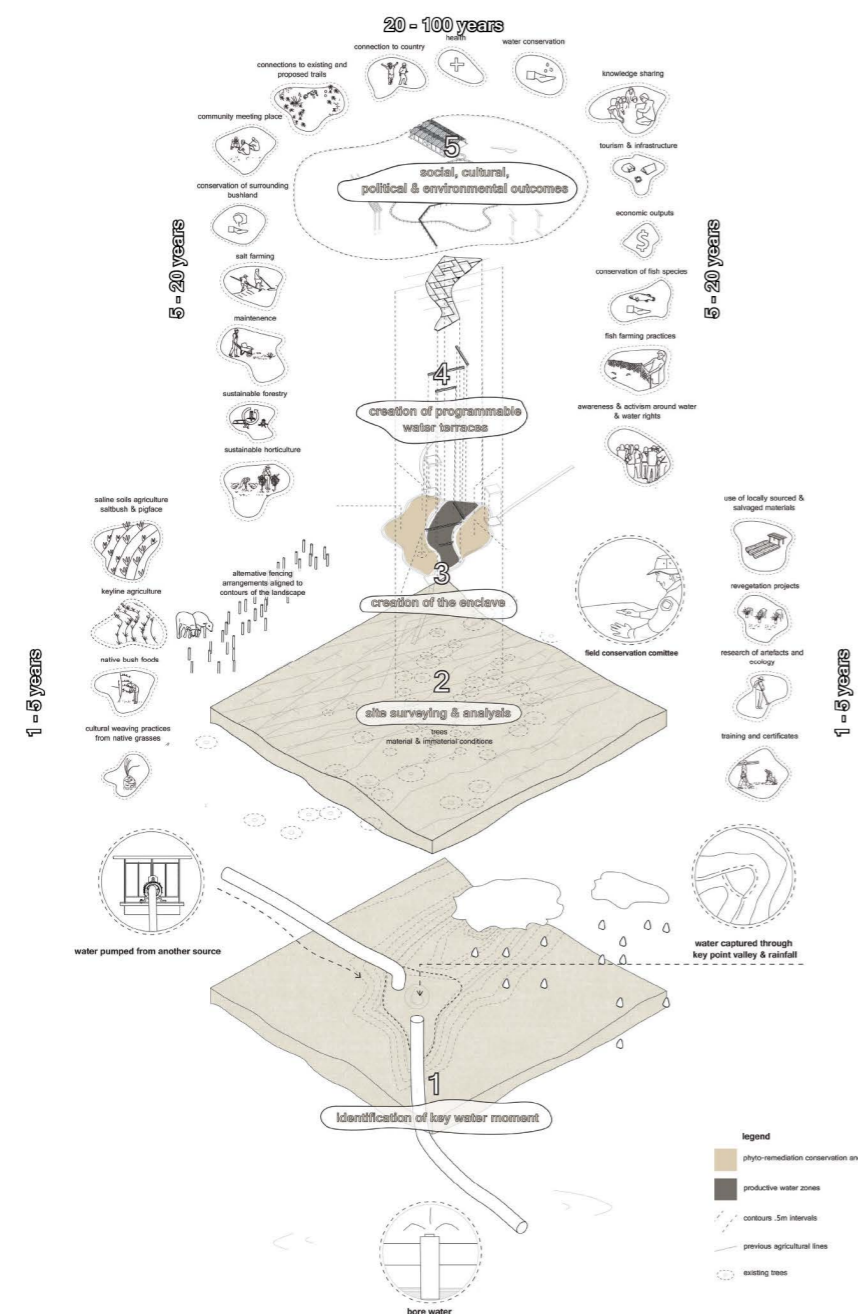


Ancient Aboriginal fireplaces contain a wealth of knowledge and history about how Aboriginal people on country for thousands of years. Usually containing small artefacts used for skinning kangaroos or grinding seeds.

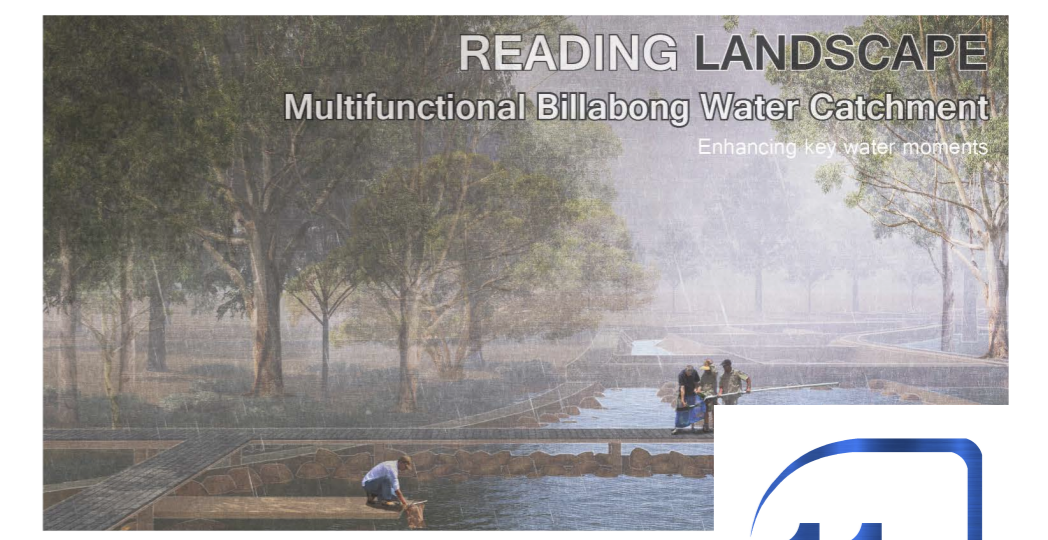
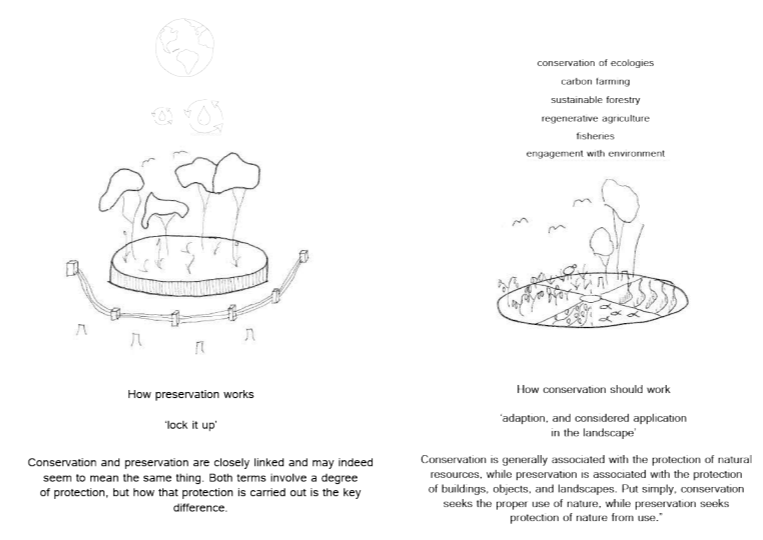
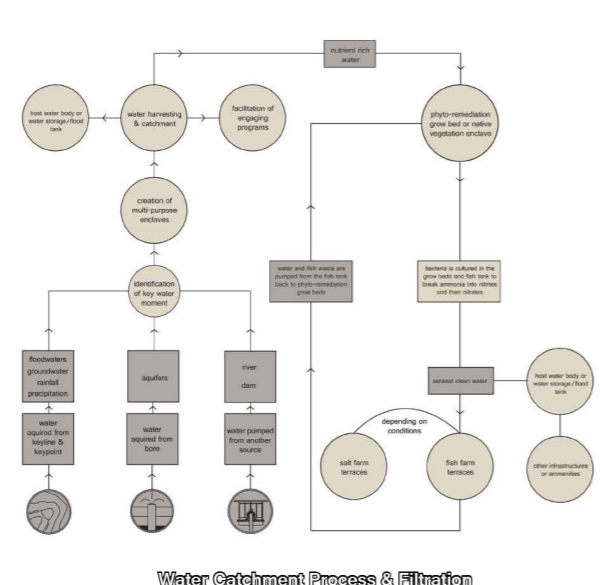
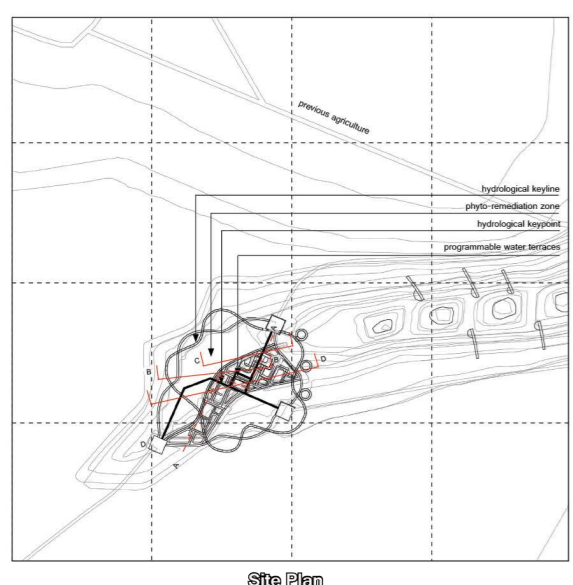
The treatment of ancient Aboriginal fireplaces can be a difficult tension between designing and not designing. Presented here are design outcomes that looks at alternative methods of protection of cultural sites from weather and human intervention.

PROTECTING KEY MOMENTS AT CULPRA STATION & KEMENDOK NATIONAL





Identifying a key water moment
Water harvesting through the identification of key water moments allows for a range of programs and outputs during a variety of different rainfall events



PROTECTING KEY MOMENTS AT CULPRA STATION & KEMENDOK NATIONAL

