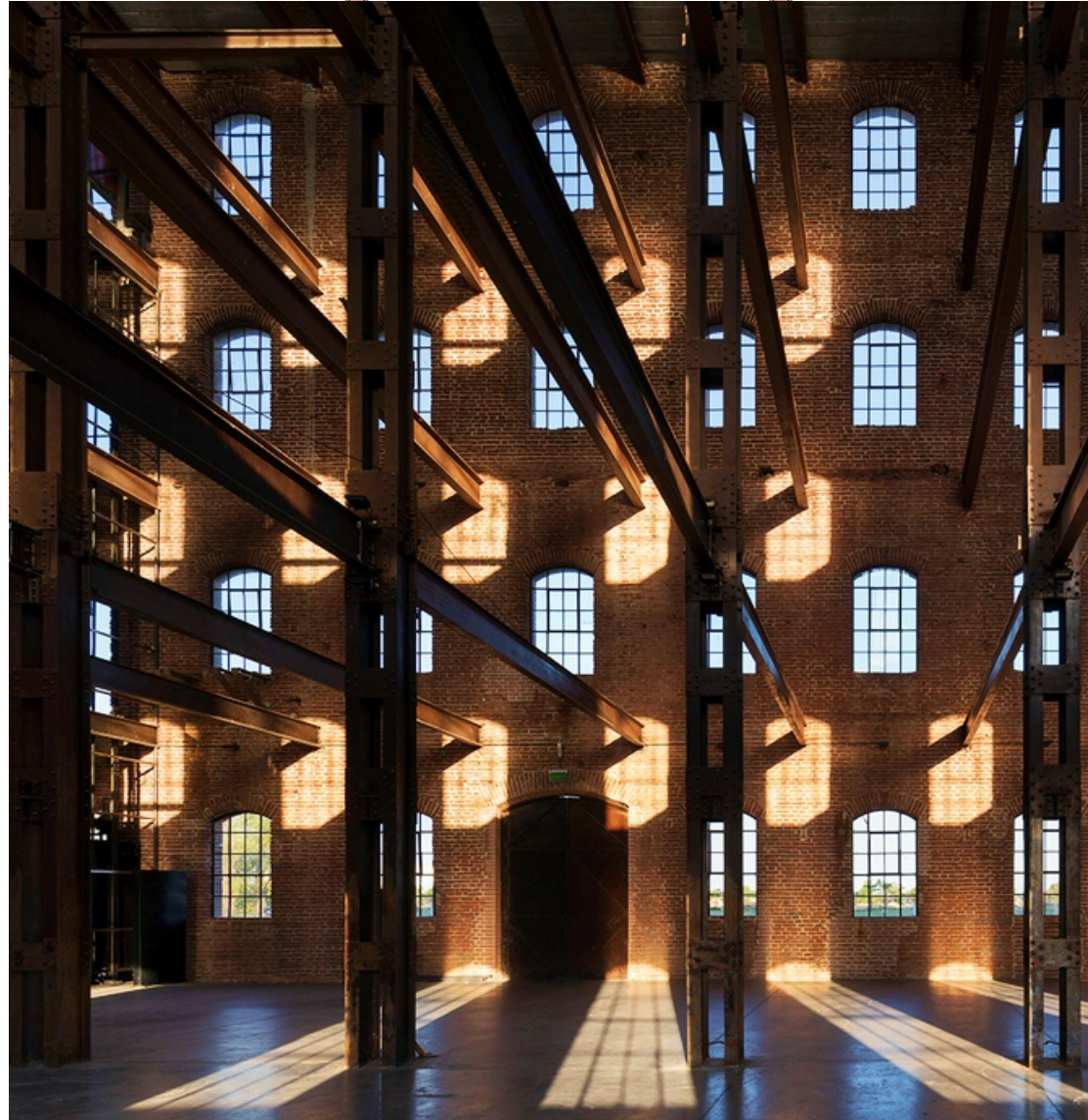


WATER HEAVEN SHADOW

EXPLORATORY MICROURBANITY



FROM DISCURSIVE TO TRANSCURSIVE

Country / City Argentina / Santa Fe

University / School Universidad Nacional del Litoral – Facultad de Arquitectura, Diseño y Urbanismo

Academic year 2019

Title of the project Workshop Santa Fe 2019 - “Urbanidad Propioceptiva. Bordeando lo distal y proximal”

Authors Álvarez, Eugenia; Cabrera, Diana; Díaz, Jérica; Salasz, David; Margenet, Nihuel.

TECHNICAL DOSSIER

| | |
|---|--|
| Title of the project | Workshop Santa Fe 2019 - "Urbanidad Propioceptiva. Bordeando lo distal y proximal" |
| Authors | Álvarez, Eugenia; Cabrera, Diana; Díaz, Jérica; Salasz, David; Margenet, Nihuel. |
| Title of the course | TPMU -Taller Proyectual en Morfología Urbana |
| Academic year | 2019 |
| Teaching Staff | Arq. Miguel Vitale y Arq. Carlos Kakisu. Colaboradora: Arq. Emiliana Balestieri |
| Department/Section/Program of belonging | Area de Diseño, Carrera de Arquitectura |
| University/School | Universidad Nacional del Litoral – Facultad de Arquitectura, Diseño y Urbanismo |



Written statement, short description of the project in English, no more than 250 words

From elements taken from Santa Fe's littoral landscapes is that the exploratory micro-urbanity is defined, trying to set triggers for the users. These elements have been regenerated, resignified and reappropriated to cause sensitive impulses on the observator. These same elements, influenced by the context and the history of the place, transform into conditions and inspiracy when it comes to making decisions about the intervention proposals.

The Center for Research and Production of river aquatic crops, the school of territorial production and the recreational space are presented as a micro-urbanity, where the person can discover, explore and study the particularities of the landscape, being the immensity of the sky, the variability of the water and the instantaneous shadows the ones that direct the triggers and invite you to transit. This space is presented as a connection between the city and Alto Verde.

The history of the place, its prints and its very present matter is what confirms the proposal, makes it formal and structures it. The discursive esthetics of Molino Marconeti is mixed with a place where the own structure of what exists, its matter, is the language that finally bonds and makes the functional propose formal.

A sensitive remake of the productive functions takes place, sticking to the idea that the harbor is still productive, but in a new phase, leaving behind the old, only functional, symbolic image of the harbor, and thinking un a new contemporary productive phase (educational, recreational, ecofriendly), going from a distant to a close bond with nearby urbanizations.



CLIMATE CHANGE AGAIN

11th International Biennial Landscape Barcelona

For further information
Máster d'Arquitectura del Paisatge -DUOT - UPC

T: + 34 93 401 64 11 / +34 93 552 0842
Contact via email at: biennal.paisatge@upc.edu

Máster d'Arquitectura del Paisatge -DUOT - UPC
ETSAB- Escola Tècnica Superior
d'Arquitectura de Barcelona
Avenida Diagonal, 649 piso 5
08028 Barcelona-Spain

Barcelona September 2020
SCHOOL PRIZE

THE PLACE WHAT DO WE PERCEIVE?

ESTHETIC

DISCURSIVE
MEMORABLE STRUCTURE
MUNICIPAL LYCEUM OF ARTS



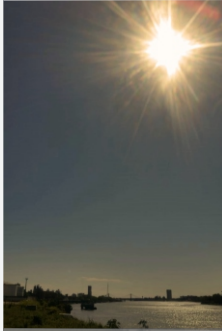
TRANSCURSIVE

INTERVENTIONS MODERN
TOWERS OF HOUSEHOLDS



STIMULES

DENSE



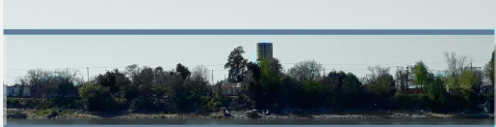
INTENSE INCIDENCE OF THE SUN

INTENSE



THE MORNING FISHING ACTIVITY OF THE RESIDENTS OF ALTO VERDE

DENSE



HOMOGENEITY IN ITS LANDSCAPING CONSTITUTIVE ELEMENTS - VEGETATION - HOUSING

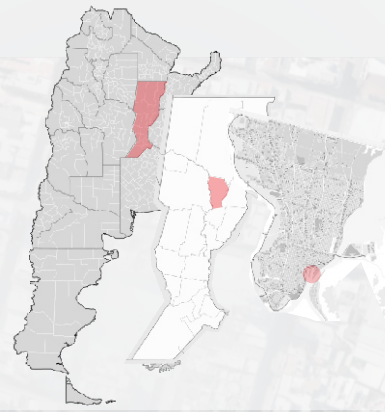
INTENSE



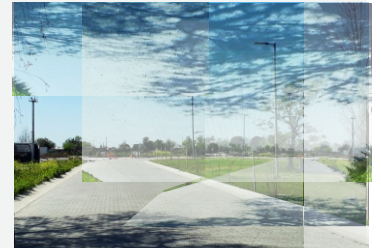
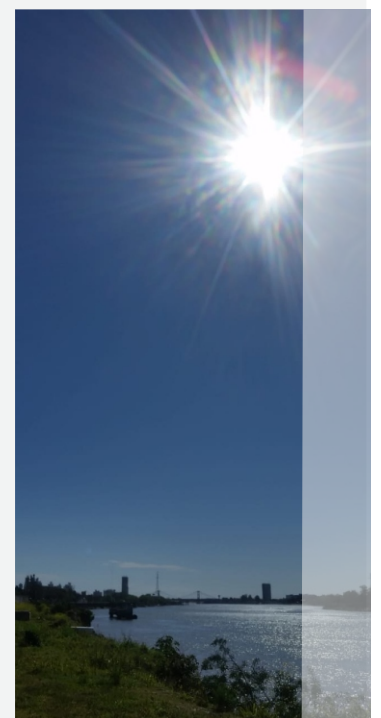
INTERRUPTION OF HOMOGENEITY. VARIABLE WATER LEVEL. SPACES ARISE



SHADES



LOCATION
ARGENTINA - SANTA FE



WATER HEAVEN SHADOW
EXPLORATORY MICROURBANITY

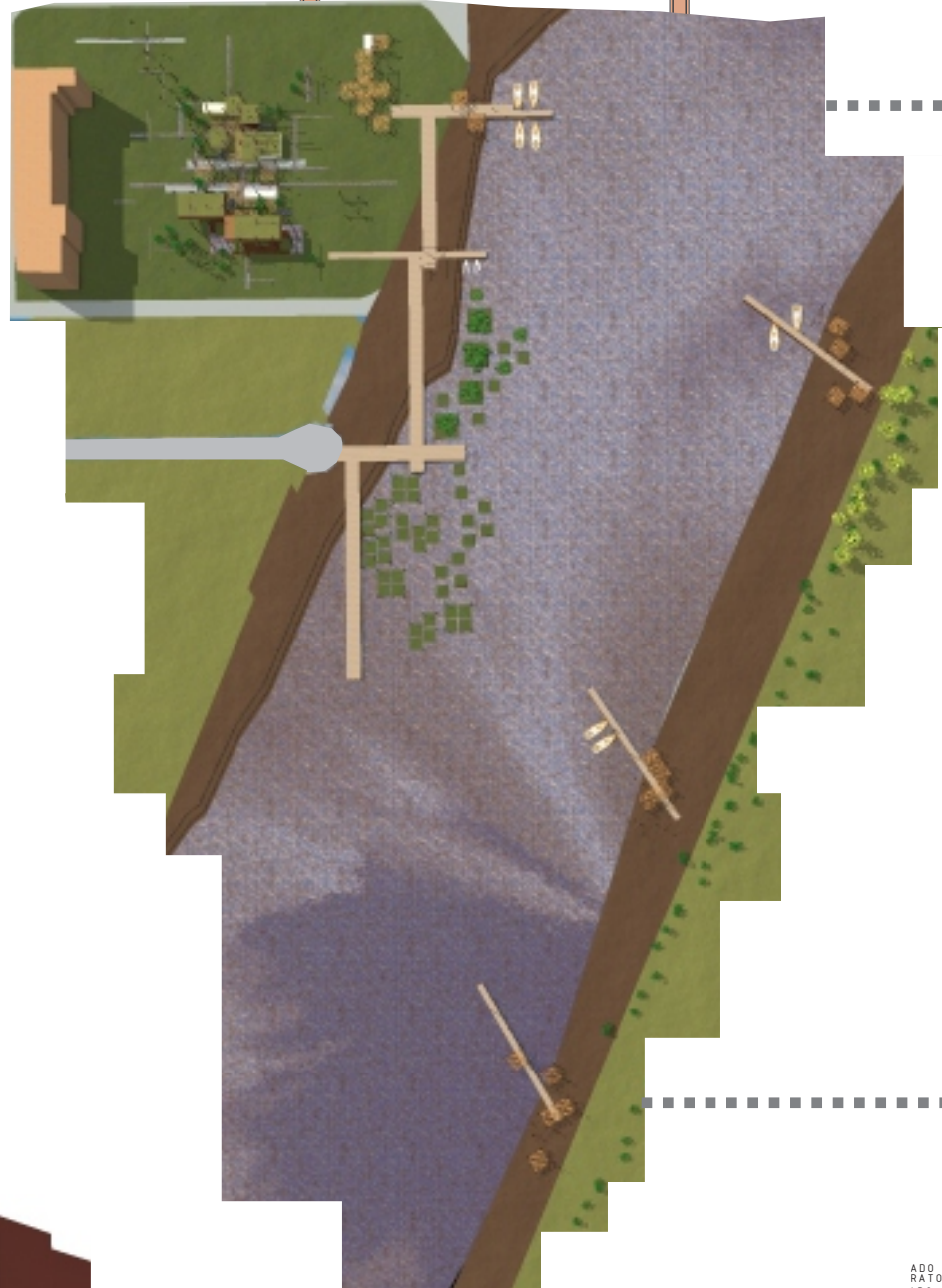


WATER HEAVEN SHADOW

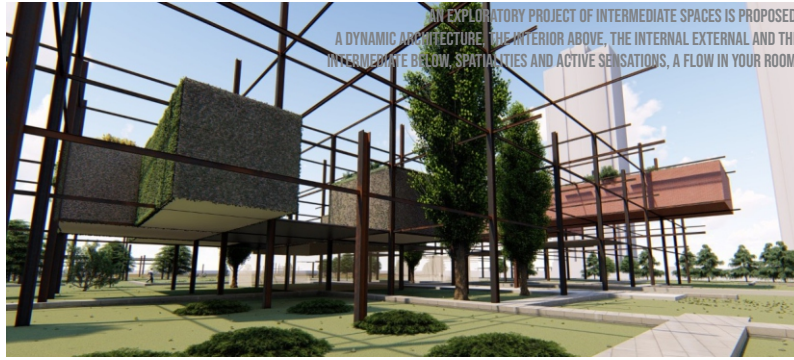
EXPLORATORY MICROURBANITY



THE IMMENSITY OF THE SKY, THE VARIABILITY OF THE WATER AND THE INSTANTANEOUSNESS OF THE SHADOWS DIRECT THE STIMULI AND INVITE THE TRANSIT

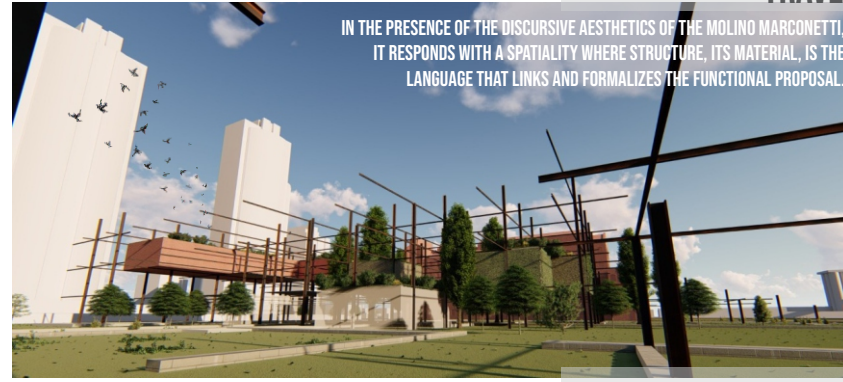


THE HISTORY OF THE PLACE, ITS TRACES, ITS VERY PRESENT MATTER, ANCHORS THE PROPOSAL, FORMALIZES IT AND THE STRUCTURE



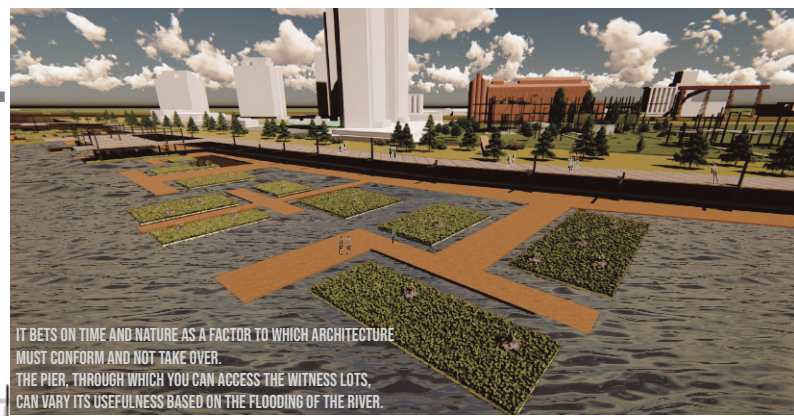
AN EXPLORATORY PROJECT OF INTERMEDIATE SPACES IS PROPOSED. A DYNAMIC ARCHITECTURE, THE INTERIOR ABOVE, THE INTERNAL EXTERNAL AND THE INTERMEDIATE BELOW, SPATIALITIES AND ACTIVE SENSATIONS, A FLOW IN YOUR ROOM.

KNOW



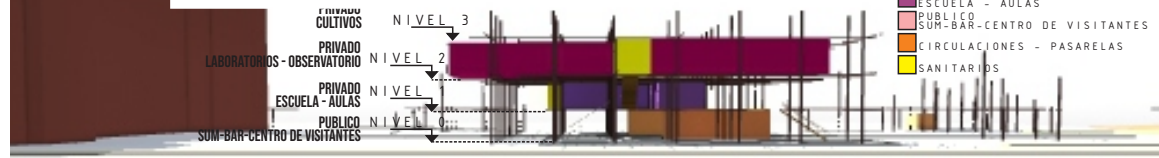
IN THE PRESENCE OF THE DISCURSIVE AESTHETICS OF THE MOLINO MARCONETTI, IT RESPONDS WITH A SPATIALITY WHERE STRUCTURE, ITS MATERIAL, IS THE LANGUAGE THAT LINKS AND FORMALIZES THE FUNCTIONAL PROPOSAL.

TRAVEL



IT BETS ON TIME AND NATURE AS A FACTOR TO WHICH ARCHITECTURE MUST CONFORM AND NOT TAKE OVER. THE PIER, THROUGH WHICH YOU CAN ACCESS THE WITNESS LOTS, CAN VARY ITS USEFULNESS BASED ON THE FLOODING OF THE RIVER.

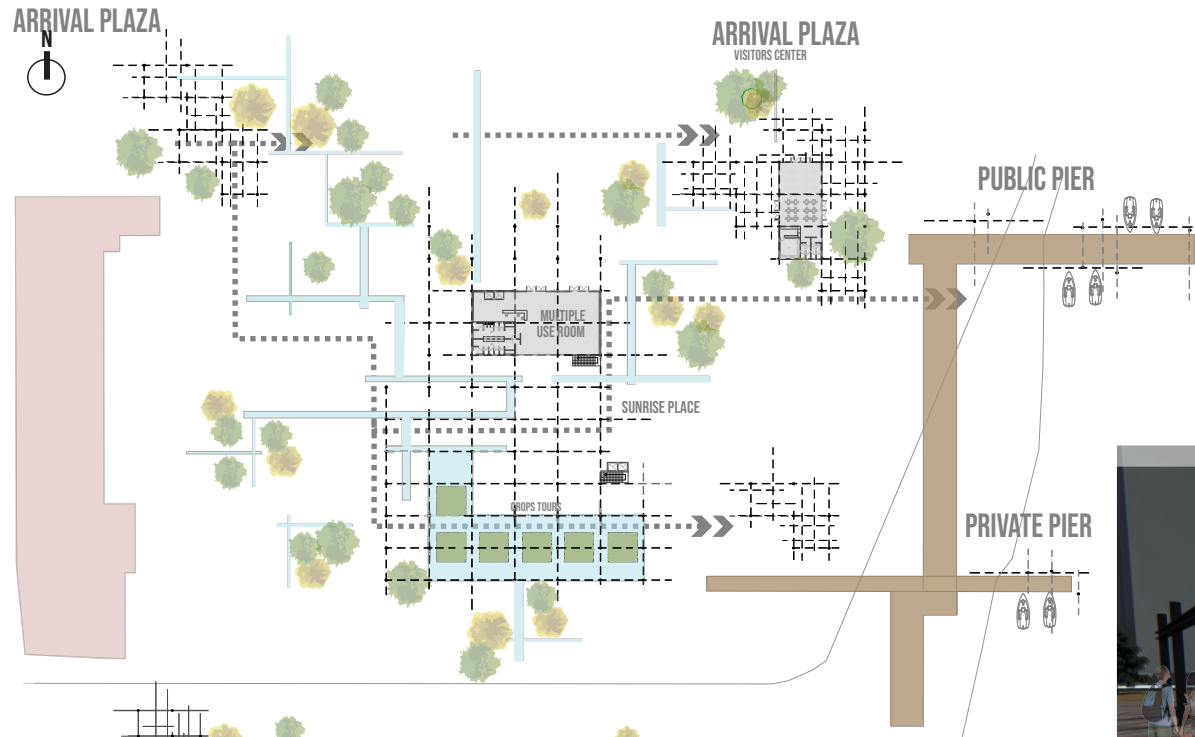
PERCEIVE



WATER HEAVEN SHADOW

EXPLORATORY MICROURBANITY

SUNRISE AND SUNSET WALK



THE SUBJECT DISCOVERS, EXPLORES AND STUDIES THE PARTICULARITIES OF THE LANDSCAP

