



Country / City	Chile, Colbún
University / School	School of Architecture of University of Talca
Academic year	2016
Title of the project	Estaradero of the Colbún Lake, a measurement tool of the variation of the flood level.
Authors	Yordana Andaur



TECHNICAL DOSSIER

Title of the project Estaradero of the Colbún Lake, a measurement tool of the variation of the flood level
Authors Yordana Andaur
Title of the course Final Degree Project
Academic year 2016
Teaching Staff Germán Valenzuela
Department/Section/Program of belonging Architecture
University/School School of Architecture of University of Talca



Written statement, short description of the project in English, no more than 250 words

The Colbún Reservoir is the largest hydroelectric plant in the country and the largest landscape intervention in the Maule Region, the one with the most environmental impact in its history. It unsettles because it is a territory highly attacked by man and for being a landscape that changes every season due –especially- to the variation of the water levels. The small resident community and a handful of tourists defend the 436 AMSL level so as to enjoy, at least, the only virtue that the flood could have: a summer resort.

It is then an environmental observatory and a social support, located in the western bank next to the parapet called Los Quillayes Camping, a municipality property. It is an Infrastructure that seeks to be a measurement tool for the variation of the elevation, a hydrometric and landscape quantification building. Built mainly in wood and concrete, it is placed on the elevation level in dispute, its oblique surface that allows climbing to the mirador leaves under it two shaded seats that permit some rest from the summer's embracing sun. The structure is transformed into a jetty when the water level recovers its maximum, revealing every season that the landscape issues here remain purely economic.

For further information
Máster d'Arquitectura de Paisatge -DUOT - UPC

T: + 34 93 401 64 11 / +34 93 552 0842
Contact via email at: biennal.paisatge@upc.edu

Máster d'Arquitectura de Paisatge -DUOT - UPC
ETSAB- Escola Tècnica Superior
d'Arquitectura de Barcelona
Avenida Diagonal, 649 piso 5
08028 Barcelona-Spain



CLIMATE CHANGE AGAIN

11th International Biennial Landscape Barcelona

Barcelona September 2020
SCHOOL PRIZE



Maule river

Maule river

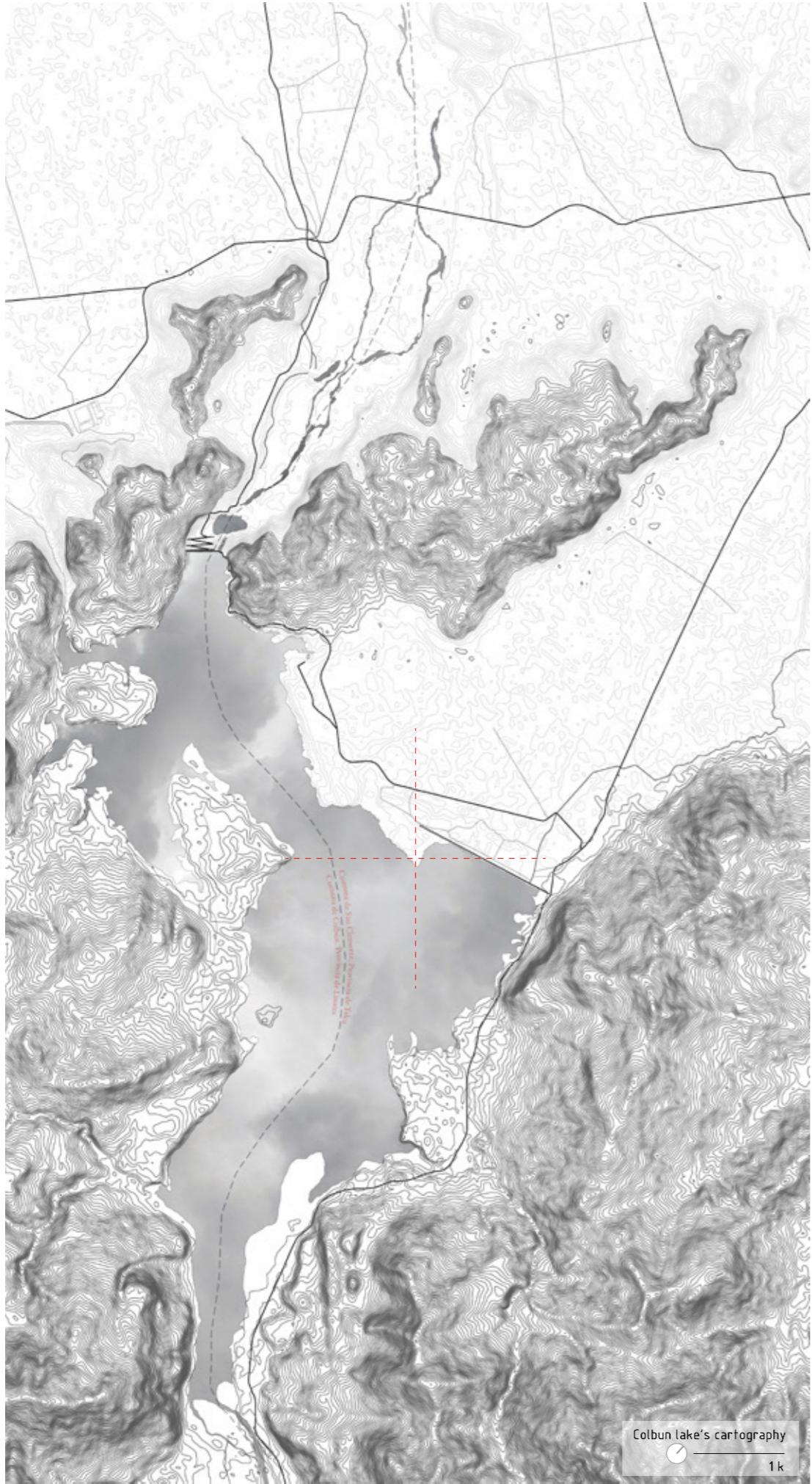
PARAPET COLBÚN LAKE
KM 117,03
MAULE RIVER

Colbún Lake

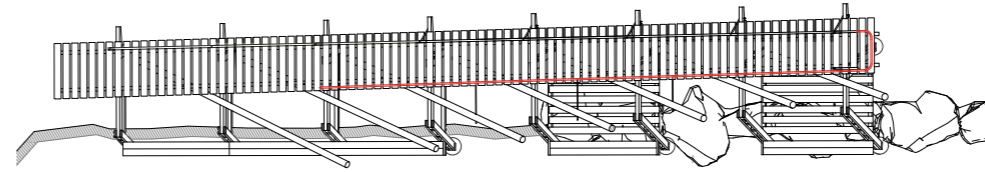


The whole and the parts are integrated, according to the globalizing discourse, by virtue of infrastructures (railways, highways, airports) that end up imposing themselves on a model of occupation that is rather multiple and dispersed, forcing the disappearance of customs and places.

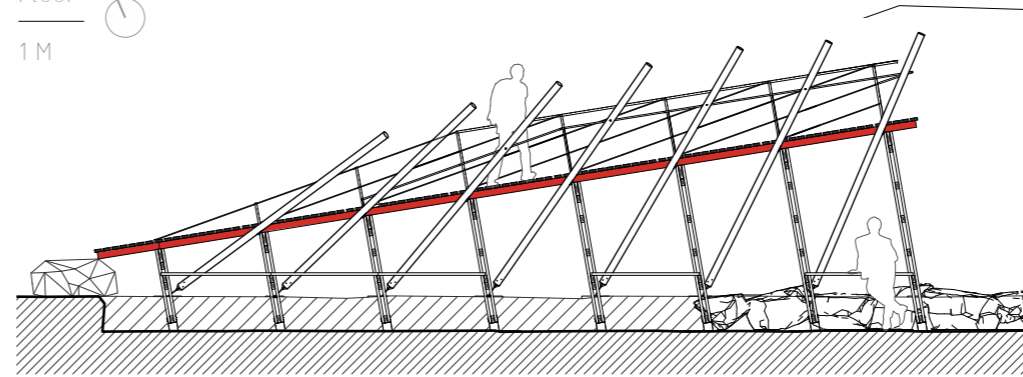
However, the image of various pre-national worlds survives as "residues": elements formed in the past but which remain valid and active within the cultural process, remnants that are still practiced and that still have a significant influence, usually in conflict with the dominant culture.



Colbun lake's cartography
1k

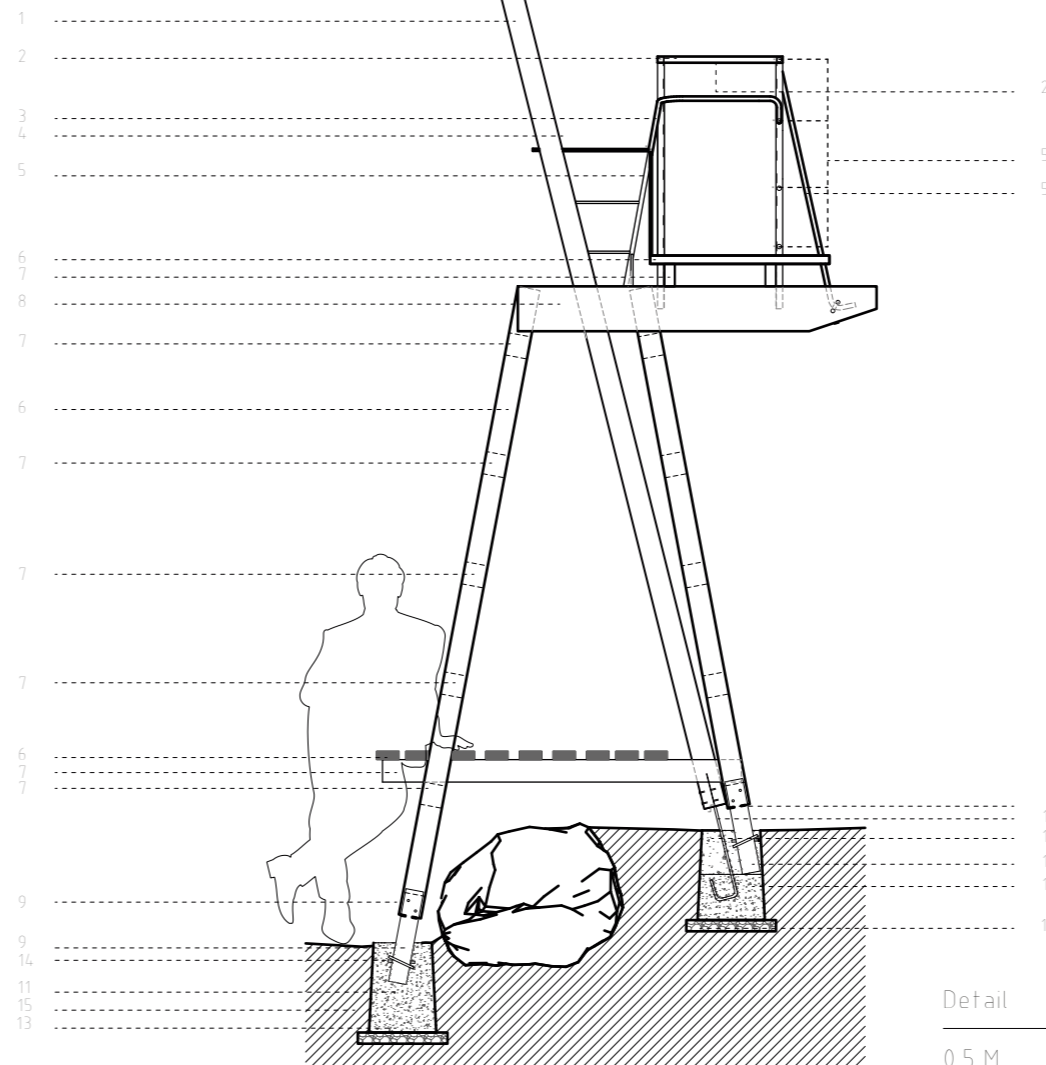


Floor
1 M



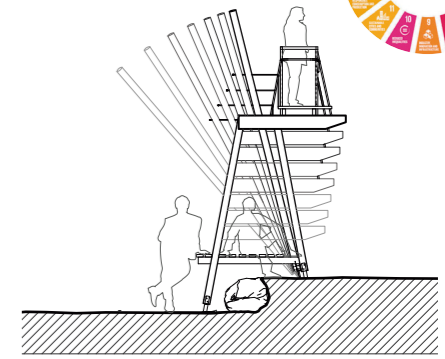
Section

1 M



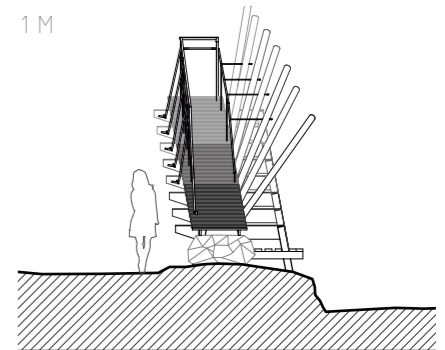
Detail

0.5 M



Section

1 M



Section

1 M

- 1 round wood 100 mm
- 2 angle steel profile 30x30x2 mm
- 3 smooth round steel Ø 16
- 4 lockwashers steel
- 5 smooth round steel Ø 12
- 6 pine wood 1x4"
- 7 pine wood 2x4"
- 8 dimensioned pine wood 2x8"
- 9 steel plate 75x5 mm
- 10 steel bar fluted Ø 16
- 11 concrete H-20
- 12 present rocks
- 13 poor concrete H-5
- 14 steel bar fluted Ø 12
- 15 paint container 5 gl.



