

Country / City Australia / Melbourne
University / School RMIT University / School of Architecture and Urban Design
Academic year 2019
Title of the project Nomadic Mechanism
Authors Yuting Zhang

TECHNICAL DOSSIER

Title of the project	Nomadic Mechanism
Authors	Yuting Zhang
Title of the course	Landscape Architecture Project
Academic year	2019
Teaching Staff	Kate Church, Kyle Bush, Tom Black
Department/Section/Program of belonging	
Landscape Architecture Discipline / Master of Landscape Architecture	
University/School	RMIT University / School of Architecture and Urban Design



Written statement, short description of the project in English, no more than 250 words

Nomadic Mechanism addresses desertification in Chad, in north-central Africa. Here, the spread of the desert has contracted the water supply and exacerbated conflict between the farmers who need land to cultivate crops and the pastoralists who need land to raise animals. These tensions, and the social and ecological relationships that underpin them, play out across a calendar defined by hydrological systems, cropping schedules, migratory herding and other processes.

This project includes the development of a "strategic atlas" to understand the complexity of these processes. The atlas maps the retreat of Lake Chad over the past several decades and identifies the impact of water scarcity in terms of how the groups in the area relate to each other and to the local landscape. The understanding gained has informed the design of a series of protocols for the Lake Chad Basin Commission.

The protocols structure an ongoing process of negotiation between the region's two distinct patterns of agriculture and help to coordinate a series of corridors that schedule the intensities of cropping and herding, such that they become mutually beneficial activities and vectors for developing anti-desertification infrastructures. The successive deployment of these infrastructures according to aeolian and migratory cycles allows for the corridors to buffer desertification.

For further information
Máster d'Arquitectura del Paisatge -DUOT - UPC

T: + 34 93 401 64 11 / +34 93 552 0842
Contact via email at: biennal.paisatge@upc.edu

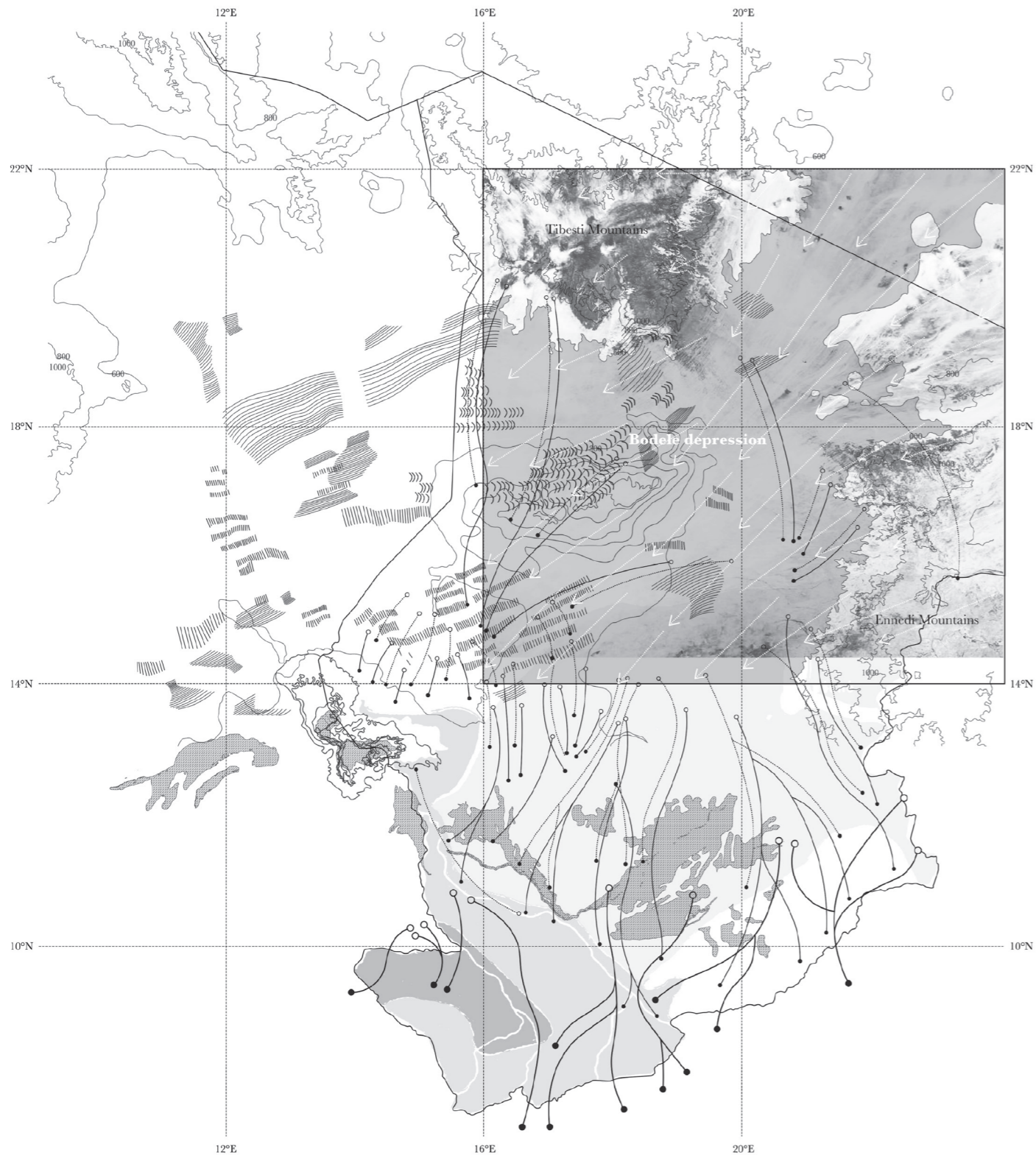
Máster d'Arquitectura del Paisatge -DUOT - UPC
ETSAB- Escola Tècnica Superior
d'Arquitectura de Barcelona
Avenida Diagonal, 649 piso 5
08028 Barcelona-Spain



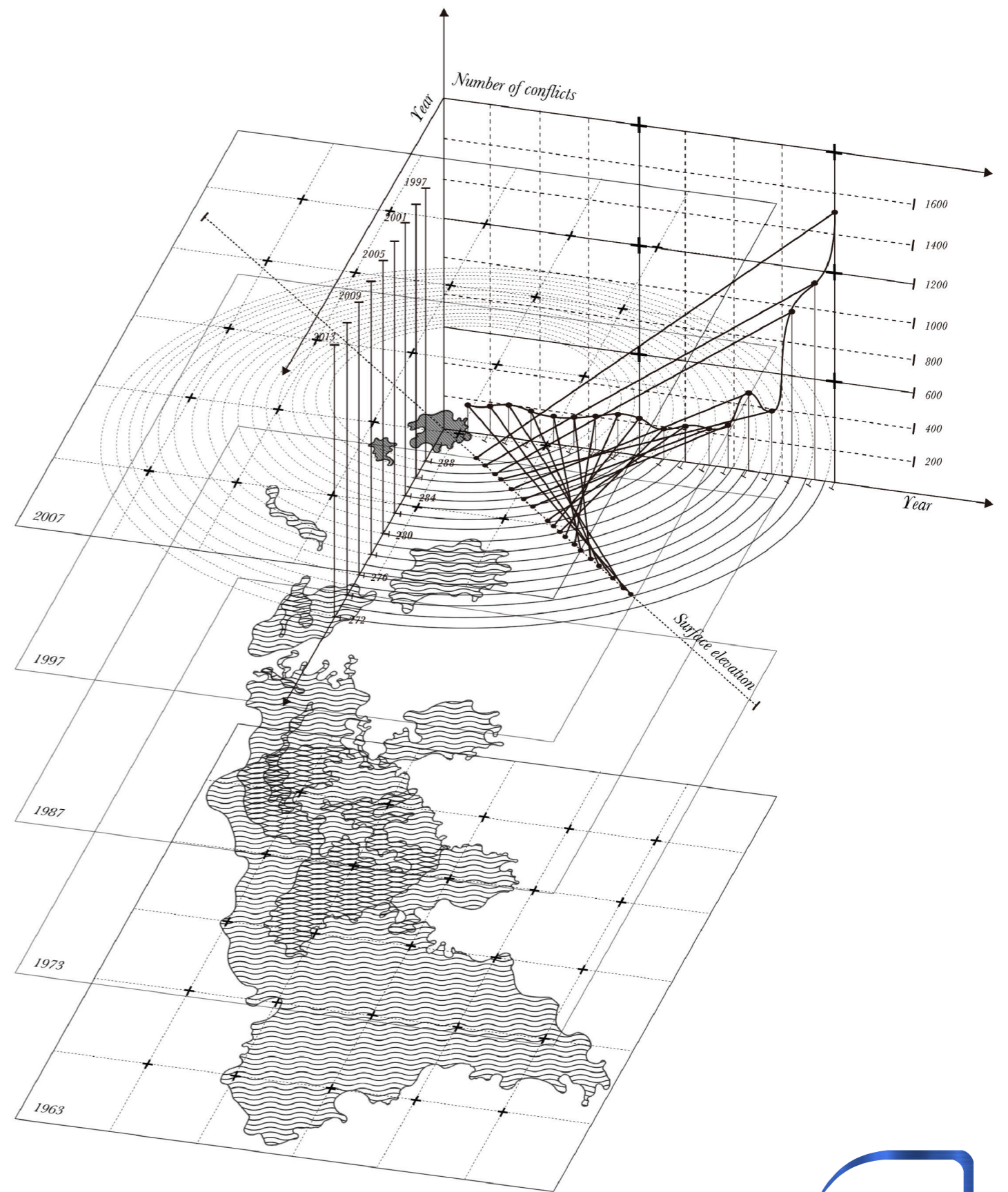
CLIMATE CHANGE AGAIN

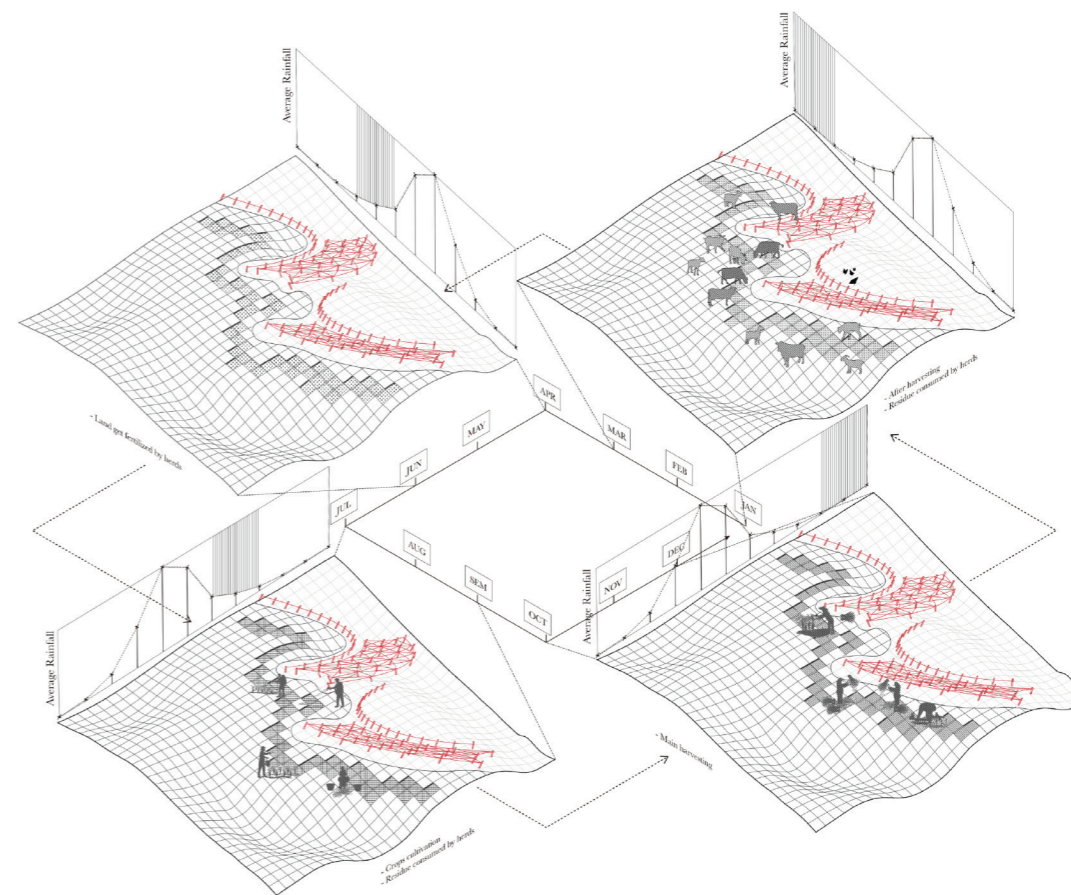
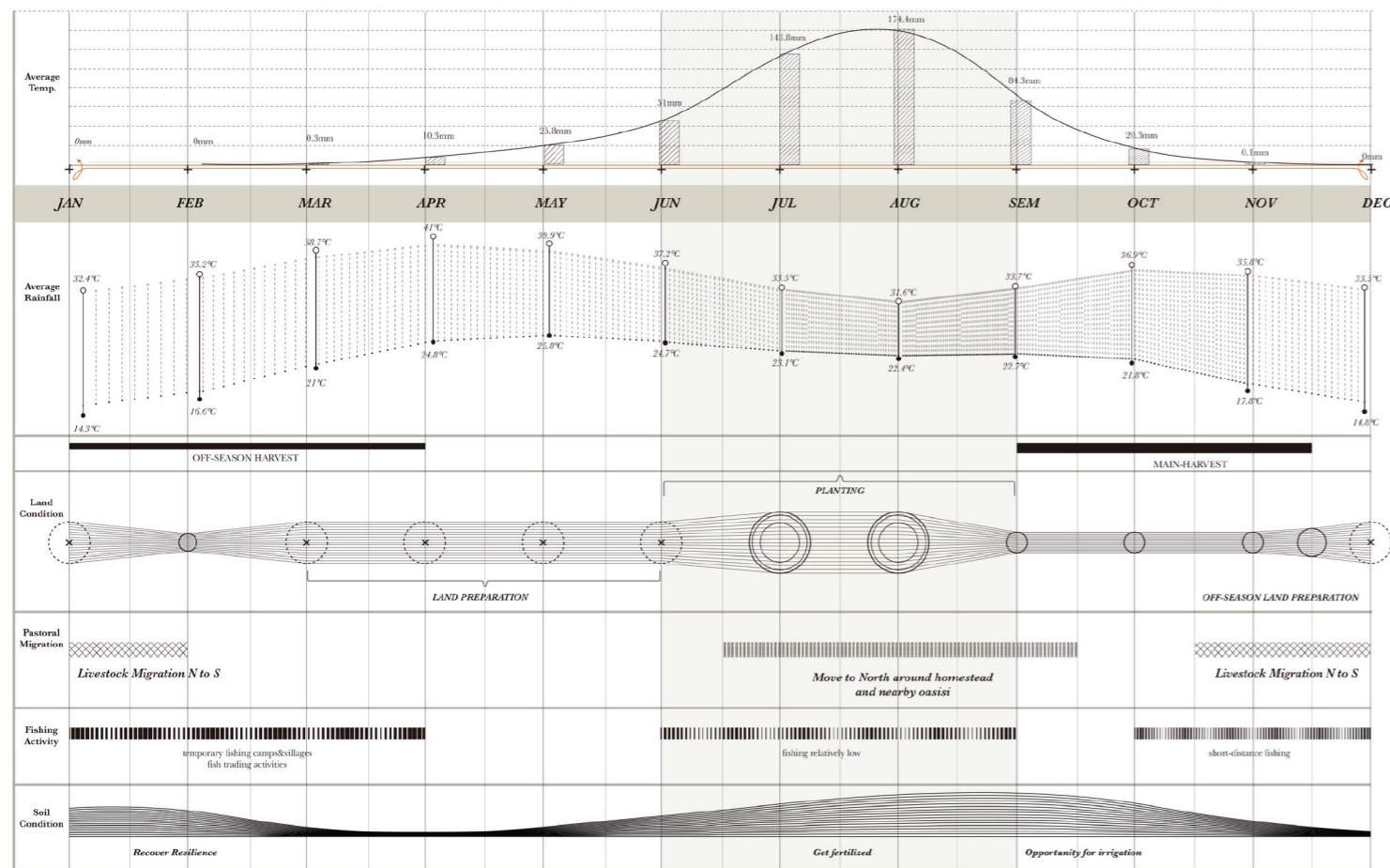
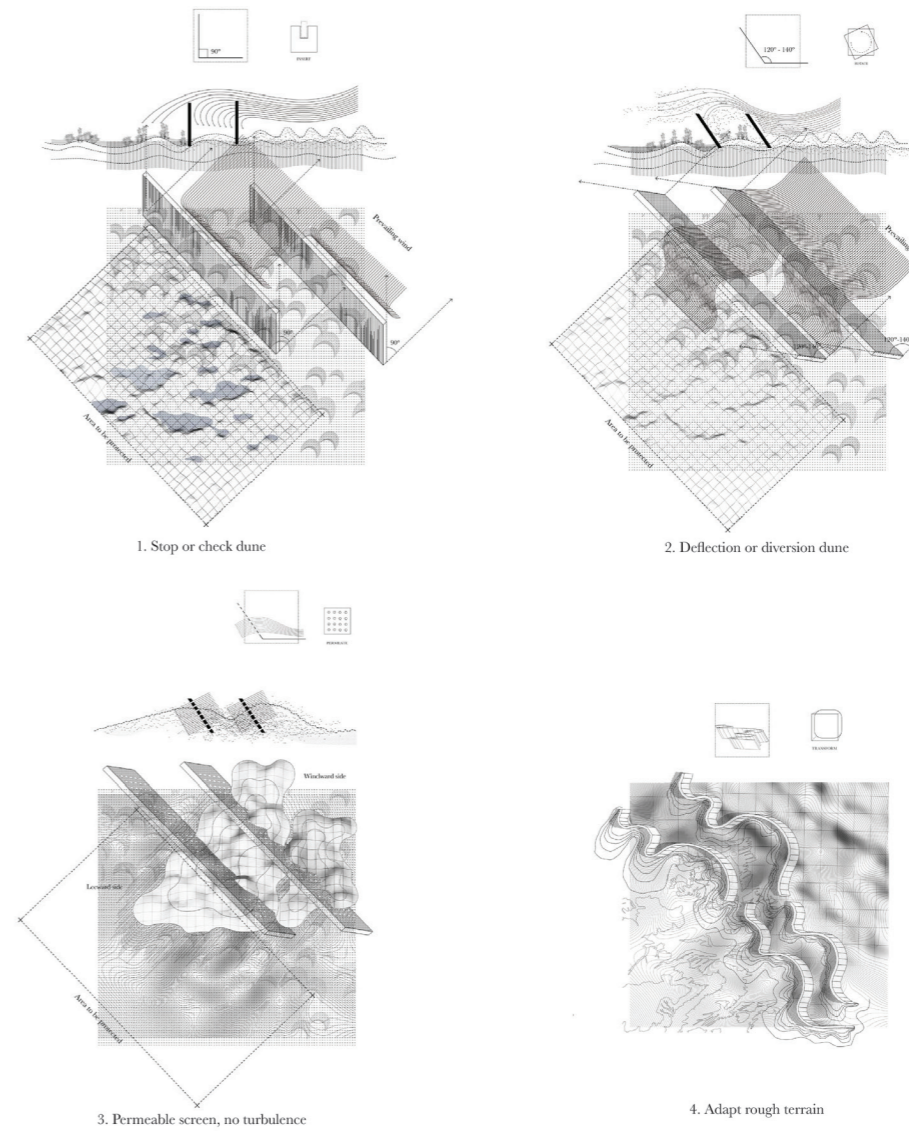
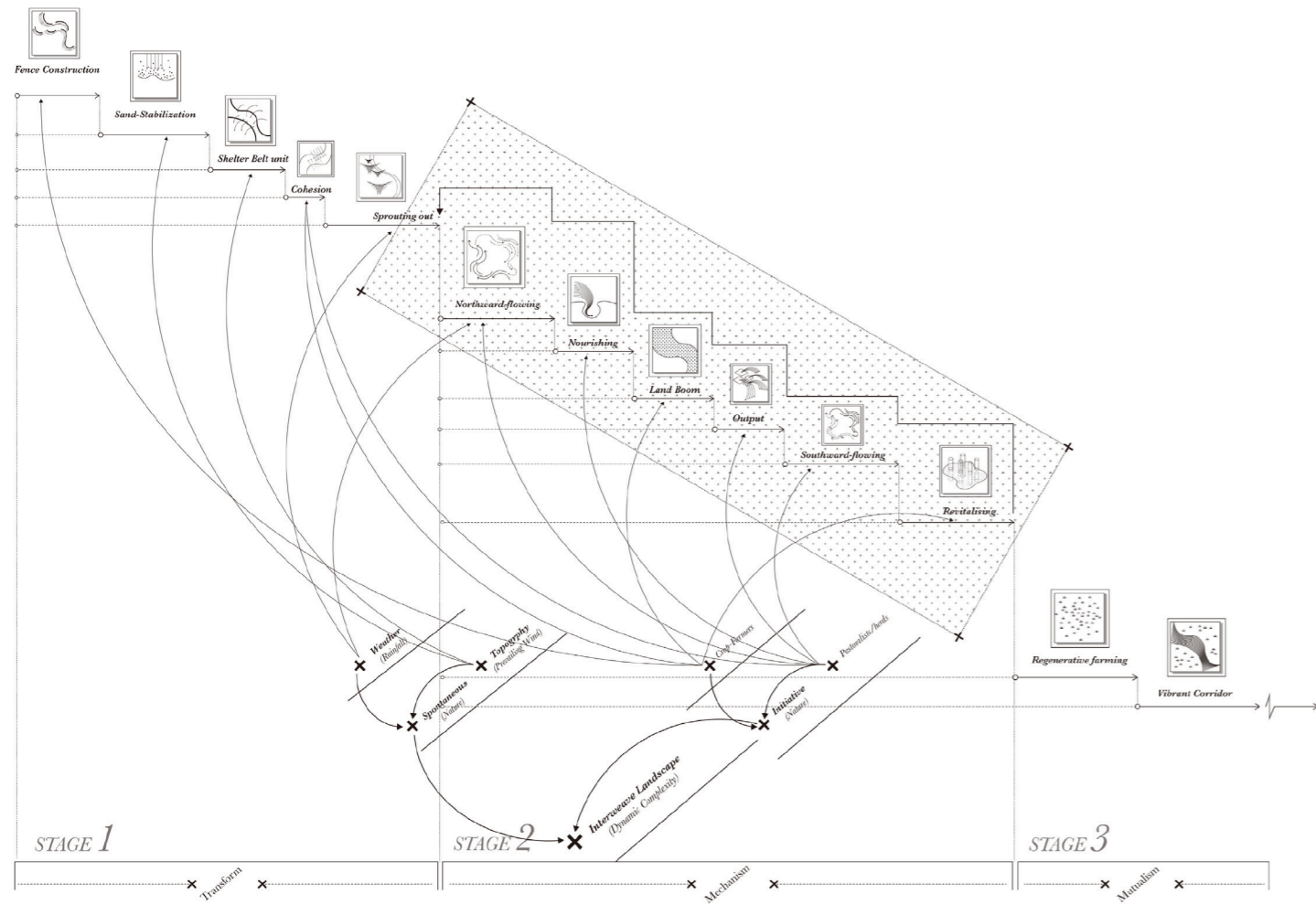
11th International Biennial Landscape Barcelona

Barcelona September 2020
SCHOOL PRIZE



Lake Chad Basin, Chad, Africa





REGENERATING CORRIDOR

