



THIS IS THE LARGER LANDSCAPE!

**PRINT WORKS**

THE OLD NEWS OF THE WORLD PAPER FACTORY IS NOW HOME TO PRINT WORKS A WORLD FAMOUS NIGHT CLUB. THE ICONIC BUILDING WILL SET THE SCENE FOR THE PERFORMANCE OF THE LARGER LANDSCAPE.

**CLASSROOM**

THE CLASSROOM IS A VITAL LEARNING SPACE WITH THE PAPER YURT AT THE HEART. THE LANDSCAPE WINDS AND LEADS YOU ROUND INTO THE CLASSROOM WHERE YOU ARE GREETED BY THE PAPER YURT AND WHERE THE RITUALS OF THE PAPER GARDEN CAN BEGIN.

**GIARDINO DI TERRAZZO**

A MORE FORMAL LEARNING ENVIRONMENT FROM THE PAPER GARDEN WHICH WILL PROVIDE A LARGE SPILL OUT SPACE FROM THE CLASSROOM. A HUGE TERRAZZO TABLE WILL ALLOW FOR COMMUNAL DINING, A TERRAZZO STAGE/ PERFORMANCE AREA AS WELL AS ROUND TERRAZZO PAVING SURFACE.

**MAKERS YARD**

A TEMPORARY SPACE WITHIN THE LANDSCAPE THAT WILL HELP FACILITATE THE MAKING OF THE VARIOUS LANDSCAPE FEATURE SUCH AS THE TERRAZZO WALK AND GIARDINO DI TERRAZZO. HEAVENLY PROGRAMMED SPACE THAT WILL INCORPORATE COMMUNITY ENGAGEMENT, HELP FORM THE GENERATORS AND A SOLO EFFORT FROM THE PRACTICAL HERMIT.

**RECYCLING CENTRE**

THE RECYCLING CENTRE WILL CREATE AN ACTIVE EDGE TO THE SITE LOCALS WILL DISPOSE OF THEIR WASTE, IN FUN AND INTERACTIVE WAYS. THE WASTE WILL THEN BE COLLECTED SORTED AND STORED IN THE MATERIAL STORE.

**MATERIAL STORE**

A CENTRAL FEATURE OF THE LARGER LANDSCAPE IS THE MATERIAL STORE. IT WILL HOLD ALL MATERIALS NEEDED FOR THE CREATION OF THE LANDSCAPE. THE STRUCTURE IS CONSTRUCTED FROM A LIGHT WEIGHT STEEL FRAME INSPIRED BY THE HISTORIC DOCKING TIMBER SHEDS. STEEL PROCURED FROM THE DEMOLITION OF TESCO'S WITHIN THE CANADA WATER MASTER PLAN DEVELOPMENT. THE STORE WILL ALSO BE MY HOME AS I BECOME THE "PRACTICAL HERMIT" OF CANADA WATER.

**TERRAZZO AVENUE**

THE LINK BETWEEN THE CLASSROOM AND THE PAPER GARDEN. THE TERRAZZO AVENUE PROVIDES AN ELEVATED PERSPECTIVE ON THE SITE, MADE FROM SOLID TERRAZZO THE MONOLITHIC BOUNDARY WILL CREATE A VISUAL AND AUDITORY BARRIER AGAINST THE PRINT WORK SITE. NEATLY CLIPPED TOPIARY WILL FLANK EACH SIDE OF THE WALK CREATING A ROMANTIC/IDYLIC ITALIAN RENAISSANCE AVENUE.

**PRACTICAL HERMIT**

THE PRACTICAL HERMIT IS THE LEADING CHARACTER WITHIN THE LANDSCAPE. LIVING AND WORKING ON SITE, HE BECOMES THE ULTIMATE LANDSCAPE ARCHITECT, A TRUE STEWARD OF THE LAND.

**PAPER GARDEN**

ALREADY EXISTING ON THE SITE, THE PAPER GARDEN IS THE COMMUNITY HUB. IT IS AN INFORMAL SPACE THAT HELPS THE CHILDREN LEARN AND PERFORM WITHIN A MORE NATURAL SETTING.

**CONSTRUCTION PHASING**

- 1
- 2
- 3
- 4

**COMMUNITY PARTICIPATION**

- PRACTICAL HERMIT
- GENERATORS
- LOCAL COMMUNITY
- LOCAL SCHOOL CHILDREN



Country / City **UK / London**  
 University / School **University of Greenwich / School of Design**  
 Academic year **2020**  
 Title of the project **The Larder Landscape: Foraging for New Material Ecologies**  
 Authors **Ross Redman-Schaffer**



## TECHNICAL DOSSIER

Title of the project	<b>The Larder Landscape: Foraging for New Material Ecologies</b>
Authors	<b>Ross Redman-Schaffer</b>
Title of the course	<b>MA Landscape Architecture</b>
Academic year	<b>2020</b>
Teaching Staff	<b>Harry Bix, James Fox, Ed Wall</b>
Department/Section/Program of belonging	<b>Landscape Architecture and Urbanism [Greenwich]</b>
University/School	<b>University of Greenwich / School of Design</b>



Written statement, short description of the project in English, no more than 250 words

**The Larder Landscape** is located in the Paper Garden [South London], the home of Global Generation, a group of teenagers central to the project. Concerned with the unethical and unsustainable material practices of landscape architecture construction, **the project is based on creating spaces through found, borrowed and donated objects from around the site.** The design is focused on **process rather than form**, expressed in the macro and micro landscape moments created by the local community of **teenagers from the Global Generation working with a landscape architect in residence.** The landscape architect lives and works on site to facilitate the transformation of the Paper Garden. The student / community process so far has involved [1] digging up clay, [2] collecting materials from the area, [3] creating a pit-kiln and [4] making objects. The objects produced inspired a **design proposal of making a form of terrazzo from local materials** - and education, gathering, working, reusing and recycling. Do we really know where our landscape materials come from and what are the ethical and environmental impacts of them? The Larder Landscape tries to explore some of these questions in the quest for new material ecologies.

*< The studio brief was focused on designing for direct action to advance ecological justice and urban equity >*

For further information  
Máster d'Arquitectura del Paisatge -DUOT - UPC

T: + 34 93 401 64 11 / +34 93 552 0842  
Contact via email at: [biennal.paisatge@upc.edu](mailto:biennal.paisatge@upc.edu)

Máster d'Arquitectura del Paisatge -DUOT - UPC  
ETSAB- Escola Tècnica Superior  
d'Arquitectura de Barcelona  
Avenida Diagonal, 649 piso 5  
08028 Barcelona-Spain



# CLIMATE CHANGE AGAIN

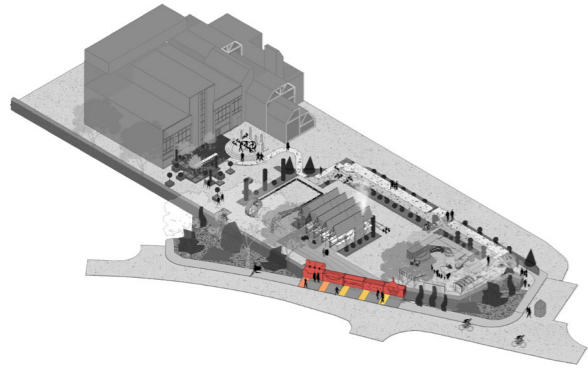
11th International Biennial Landscape Barcelona

Barcelona September 2020  
SCHOOL PRIZE

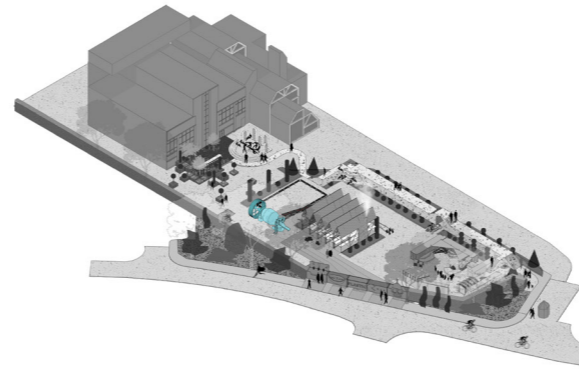




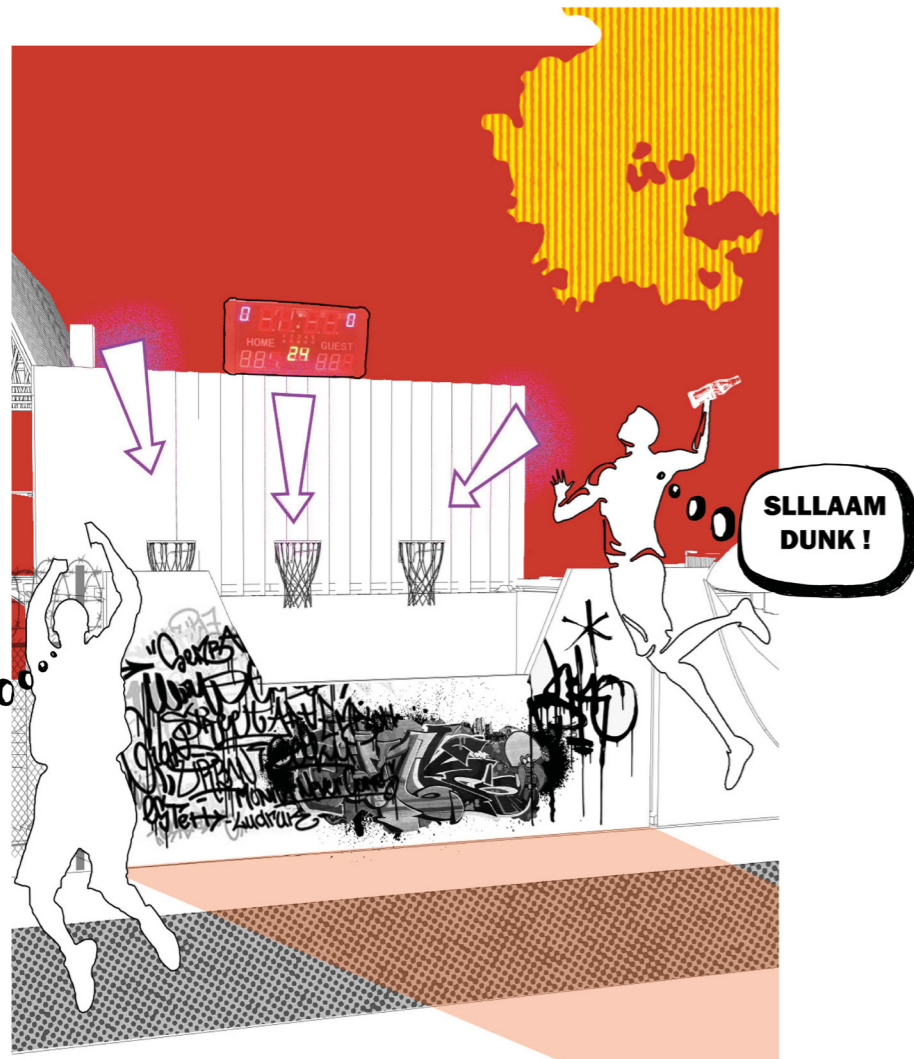
# RECYCLING CENTRE



# MAKERS YARD



# TERRAZZO AVENUE





THE HERMITAGE AT THE LARDER LANDSCAPE





