

We love the city: The green city

Concrete planters

Escofet®

- 1 Renaturalising public areas
- 2 Characteristics and values of concrete
- 3 Urban planters
- 4 Planters with seats
- 5 Green enclosures
- 6 Protection planters
- 7 Our products
 - Box Planter*
 - Icaria*
 - Hidrojardinera*
 - Bilbao*
 - Net*
 - Conica*
 - Jules et Jim*
 - Binaria*
 - Esfera*
 - Lena*
 - Highfive*
 - Niu*
 - Niu Oval*
 - Crown*
 - Otto*
 - Mirador*
 - Modular*
 - Comú*
 - Serp*
- 7 Materials

We love the city: The green city

Concrete planters

Escofet[®]

Renaturalising public areas

Increasing green areas and protecting biodiversity are the main premises for promoting a change in urban models that is aimed at renaturalising compact cities. *Escofet's* planter collection aims to bring nature closer to the city, with planters of different types that make the city friendlier and create more attractive habitats, groups of modular benches that delimit parklands and benches that offer shade in which to rest. The purpose of all the above is to provide a wide range of elements and types that meet the needs of each project.





Characteristics and values of concrete

The choice of concrete for public space is a good option due to its durability, high resistance, ease of maintenance and flexibility in terms of production. These characteristics define a solid guarantee of manufacture of the four planter typologies that we are presenting: **urban planters, planters with seats, green enclosures and protection planters.**

Durability and resistance

Precast concrete planters require no specific maintenance during their useful life, which is estimated to be more than 30 years.

Landscaping

Singular planters for urban landscape with the intention of embellishing new areas of the city through design and personality.

Organic shapes

The formal rounded appearance and comfortable sensation of cast concrete planters give the product visual and tactile smoothness.

Finishes and colour

Colour is becoming a feature that is more and more necessary in shaping public space and tactical urbanism offers the option of applying it in a freer and more creative way on planters.

Fast installation

Due to their considerable weight, planters can be installed directly on the ground. Their design includes a system to facilitate unloading, installation and subsequent mobility.

Ease of maintenance

Cleaning with pressure washing and the subsequent replacement of the original water-repellent treatment applied to the planter's surface. Water drainage is ensured by different options.

Urban planters

Elements that make it easy to care for and adorn the city, installed as stand-alone units, in groups or combined with benches. Their extensive variety of shapes, capacities and materials make it possible to choose those that are most appropriate for different plant species and sizes.



Planters with seats

The need to combine benches with planters has given rise to a hybrid product that offers new uses. The shade protects users and lowers the temperature of the seat. In addition, their size allows them to be used to either delimit the entry of vehicles or channel pedestrian flows.





Green enclosures

Blocks formed by modular benches containing soil with the objective of creating tailored green areas to promote renaturalisation in public space, even without the need for excavation work, if this is not possible.

Protection planters

Anti-intrusion urban elements that protect and guarantee safety for citizens, channelling pedestrian and bicycle traffic or delimiting parking spaces. They may be filled with plants and shrubs or simply be ballasted with gravel.



BOX PLANTER

Box Planter includes two models. One of rectangular format of the same longitudinal dimension as the Box 200 bench and a second square-sized planter of 100 cm side. Both are born to renaturalize the city by formalizing linear aggregations of planters.



ICARIA

Icaria is a monobloc concrete planter with a large internal volume that makes it possible to plant trees or shrubs of an average height. The texture on all four sides includes a subtle bas-relief formed by vertical lines framed by classic panels.



HIDRO- JARDINERA

The Hidrojardineras concrete monobloc are characterised by the appropriate incorporation of a self-watering system into their design. They were designed with the objective of creating planters in several sizes to permit the planting and growth of average-sized trees.



BILBAO

The Bilbao planter is a pyramidal element with a triangular base and slightly arched sides. The formal result is achieved by means of a torque of 16 degrees in the upper plane with respect to the lower one, thus giving rise to a menacing volume with a retrained movement.



NET

Net Planter is a reinforced concrete planter in clear reference to the traditional ceramic vessels, with the formal characteristics similar to the Net bin, the original element of the collection. Its friendly and rounded shapes facilitate its integration in any environment.



CONICA

Conica is an assembly of two flower boxes in the form of the traditional plant pot that we all retain in our mind's eye. Made from dry mix concrete and with a capacity of 450 and 650 litres, they embody that traditional essence and transfer it to the urban setting.



JULES ET JIM

Jules et Jim are two versatile garden pot models that share a base, forming a bench beneath the shade of a tree. They can coexist as separate elements or live together in harmony as complementary elements, without conflict. Jules is more open and passionate.



BINARIA

Binaria is a hybrid item consisting of a large plant pot and an adjacent bench. Thanks to this fusion of elements, the Binaria plant pot combines nature, people and matter in a single element.



ESFERA

Esfera is a collection of large planters designed to contain trees or large shrubs in public areas. Their spherical shape permits the creation of dynamic, fluid, organic configurations that are reminiscent of the seed or fruit clusters so often found in nature.



LENA

Based on the geometry of a slanted cone with two non-parallel planes, the large volume Lena planter designed by Ruisanchez Arquitectos has an external diameter of 230 cm to allow the growth of trees of an average height.



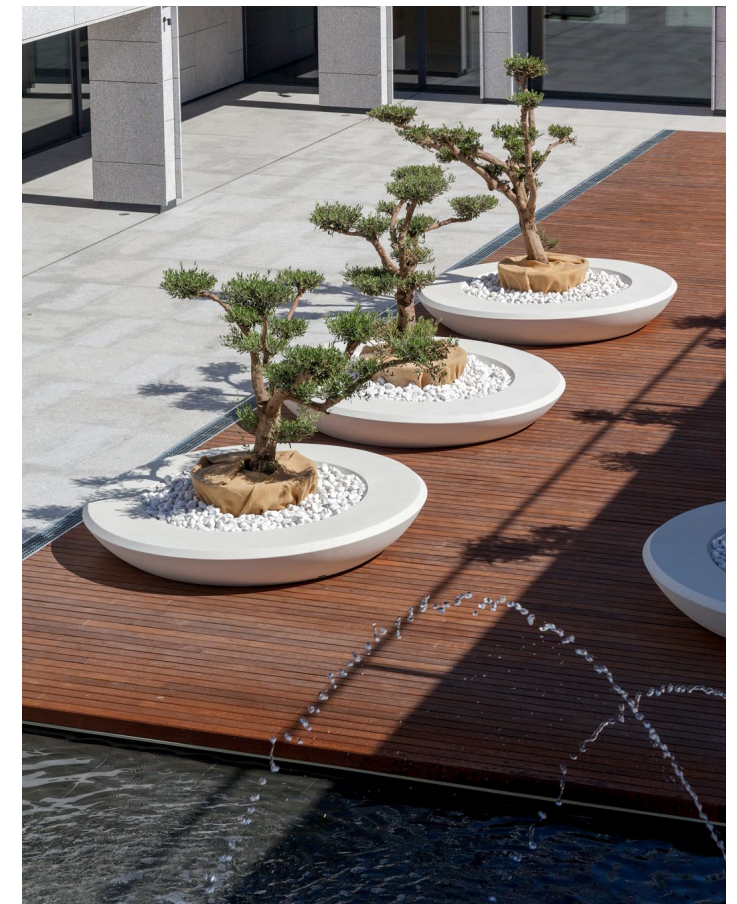
HIGHFIVE

Highfive is an anti-intrusion urban element formed by five moulded concrete volumes. Its main objective is to withstand the impact of heavy vehicles in order to protect and guarantee the safety of citizens, organise pedestrian and bicycle flows and limit parking spaces.



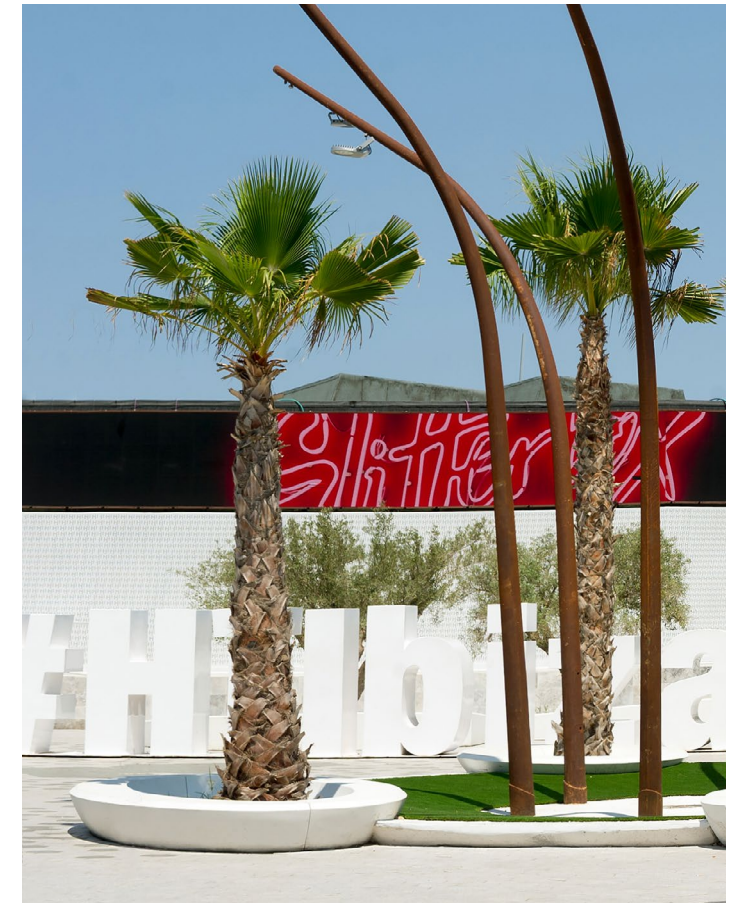
NIU

Niu is an urban element with the apparent formal simplicity of a concrete ring that in actual fact conceals its considerable functional versatility as a flower box, seat, tree guard and a sandbox for children.



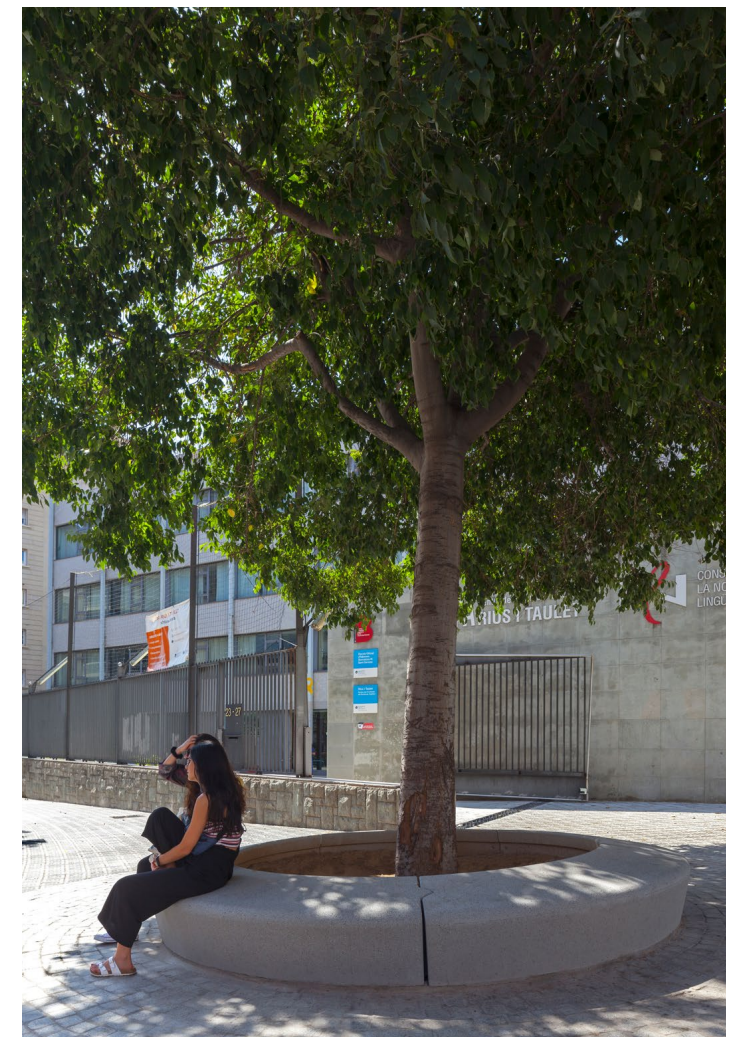
NIU OVAL

Niu Oval is an urban element with the apparent formal simplicity of a concrete ring that in actual fact conceals its considerable functional versatility as a flower box, seat, tree guard and a sandbox for children.



CROWN

The Crown plant box can be incorporated as a separate element into an urban setting or installed in a sequential layout, with no beginning or end. It is made up of five parts that form a circumference with an outer diameter of 340 cm and an inner diameter of 240 cm.



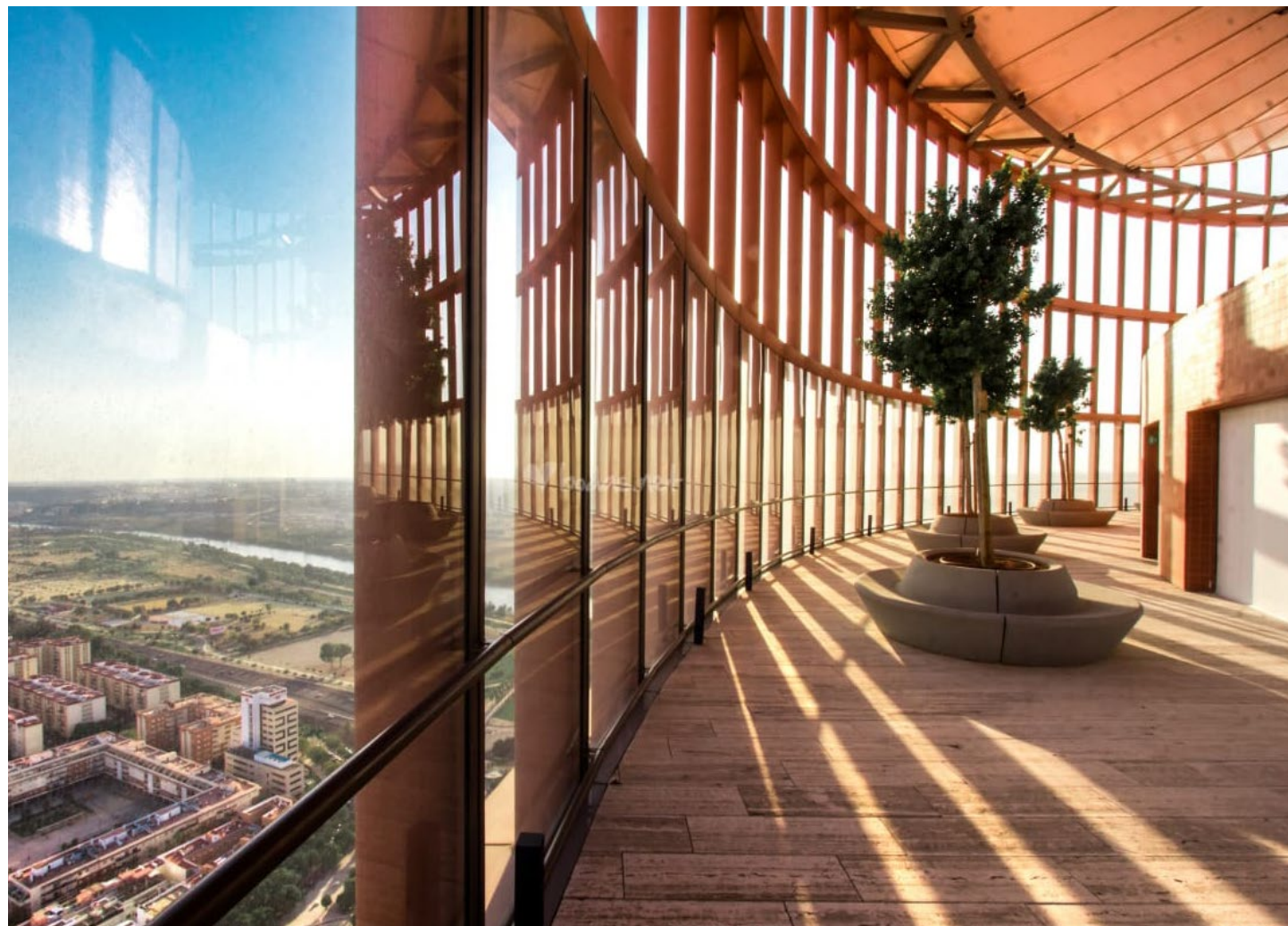
OTTO

Otto is a modular site furnishing element which can be used as a tree guard, a large flower box or as a sandbox for children. Its unique geometry generates a dialogue between inside and outside and between container and content.



MIRADOR

The Mirador plant pot has an oval-shaped design and is formed by four adjacent single-piece moulded concrete parts, with a built-in bench around the perimeter, in a revised version of a classic from the Escofet catalogue.



MODULAR

The Modular bench is the outcome of the industrialisation of the bench around the perimeter that defines the boundary of the raised square on top of the hypostyle construction in Park Güell, Barcelona and makes the most of all the modular combinatorial and latent spatial options of the original design, adapting its ergonomics to current demands.



COMU

The Comú modular element is the response to the need to design a meeting point. Its basic, circular, enclosure-like configuration with an external diameter of 4 metres is an invitation for people to sit on the inside or outside of the bench.



SERP

Different aggregations to the Serp modular backless bench system permit the creation of straight or undulated continuous backless benches. It can also be used to retain earth and form a boundary between areas with plants and areas frequented by pedestrians.





GR. Etched Grey



NG. Etched Black



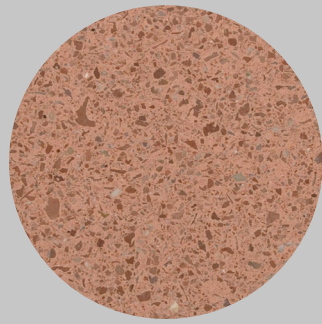
BL. Etched White



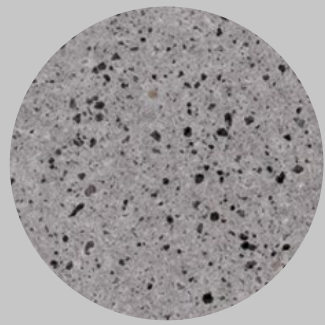
CA. Etched Grey CA



BG. Etched Beige



RA. Etched Red



EGR. Eco-Grey®



ENG. Eco-Black®

Materials

Water, aggregates and cement. We manufacture the products using this basic formula, taking concrete technology to the limit and introducing new, more sustainable formulas.

