

We love
the city

Escofet®

- 1 The city is changing
- 2 Transforming public spaces
- 3 We love the city
 - Lively city
 - Playable city
 - Green city
 - Accessible city
 - Sustainable city
- 4 Materials

We love
the city

Escofet[®]



The city is changing

We are living in a time of change in cities, where people take on greater protagonism. The new urban model is expanding, oxygenating and energizing public spaces, creating new ones with new uses, as well as encouraging interaction between people. The new mobility schemes and the goal of humanizing the city brings with it new proposals for making spaces more flexible, better landscaped and better looking, with practical, sustainable modular solutions.



Transforming public spaces

We at Escofet love the city. We have been promoting change and transformation in cities for over 100 years. The new challenges motivate us to continue working to design new solutions and products to foster people meeting and to fill the city with life again. We want to continue designing products which are not only useful and necessary, but also contribute to making urban projects transformative and positive for the people who enjoy them. And to do so while maintaining our traditional values: commitment to the design and landscape value of our city elements.

We love the city

To this end, we have developed the “We love the city” programme through which we can direct all our resources, talent and creativity to respond to the new challenges facing us in our cities. Together with our entire team, as well as collaborating architects, designers and landscapers, we want to remain at the forefront of change and, with new solutions and products, to actively improve five areas: the lively city, the playable city, the green city, the accessible city and the sustainable city.



We love the city

Lively city



Walkable city



Playable city



Sustainable city

Green city



Materials



Lively city





For streets and squares to come alive, they need to be redefined as more liveable and comfortable public spaces. In this sense, one thing which has an immediate, positive impact is the choice of urban furniture elements which favour encounters, conversation and play, thus promoting a more human and friendly city.





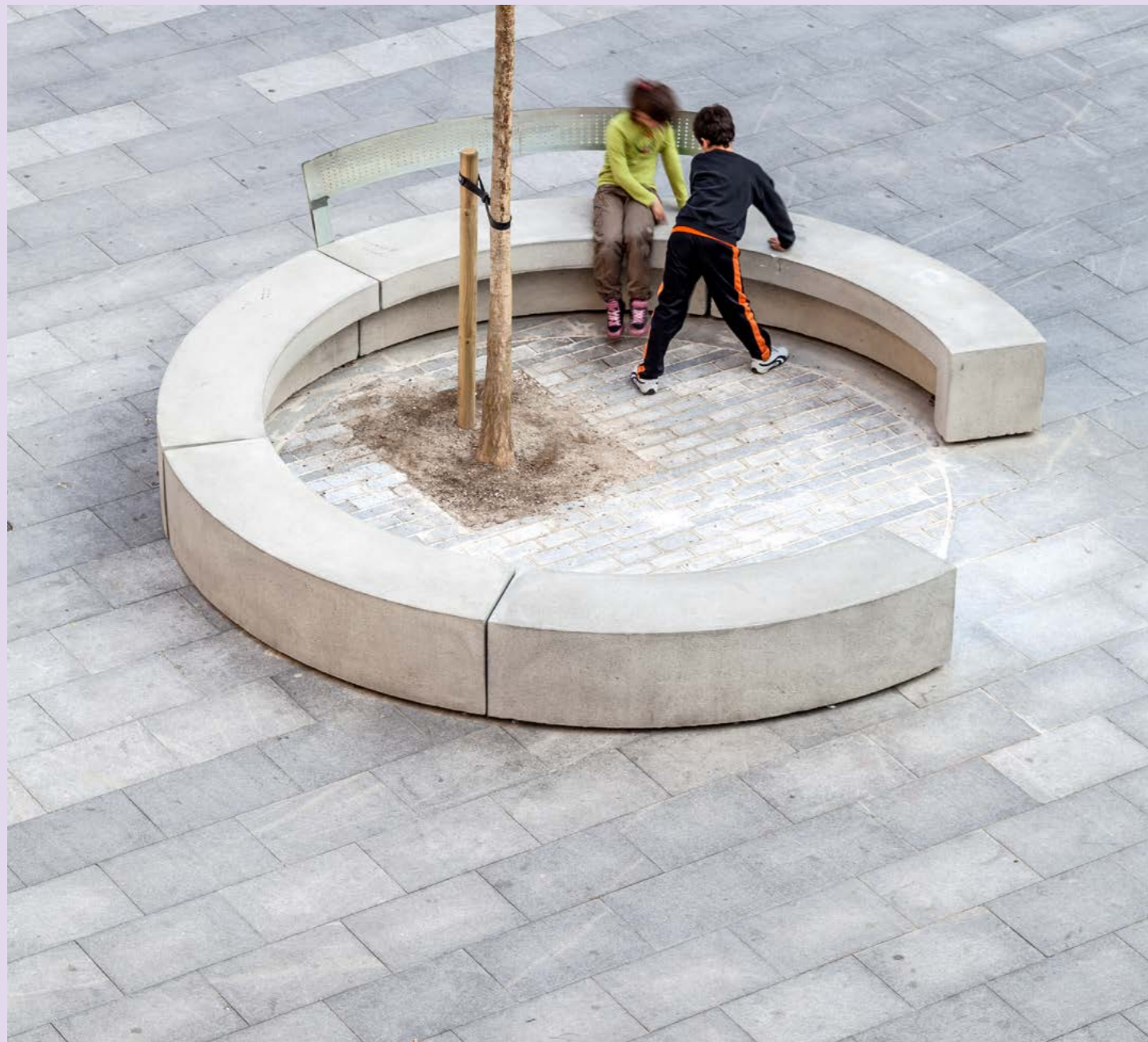
Increasing social interaction and the active use of public space through the development of concrete, wooden and combined urban elements suited to different uses and needs. Flexible, adaptable elements depending on the context and users, with new shapes and materials.

Use of light in urban elements as a means to improve safety and expand the possibilities of using and enjoying public spaces.



Playable city





A city that recognizes the social importance of play in public space promotes and plans opportunities for diverse and inclusive play in the urban environment for children, adolescents and adults who care for them and live with them, improving the coexistence of citizens.



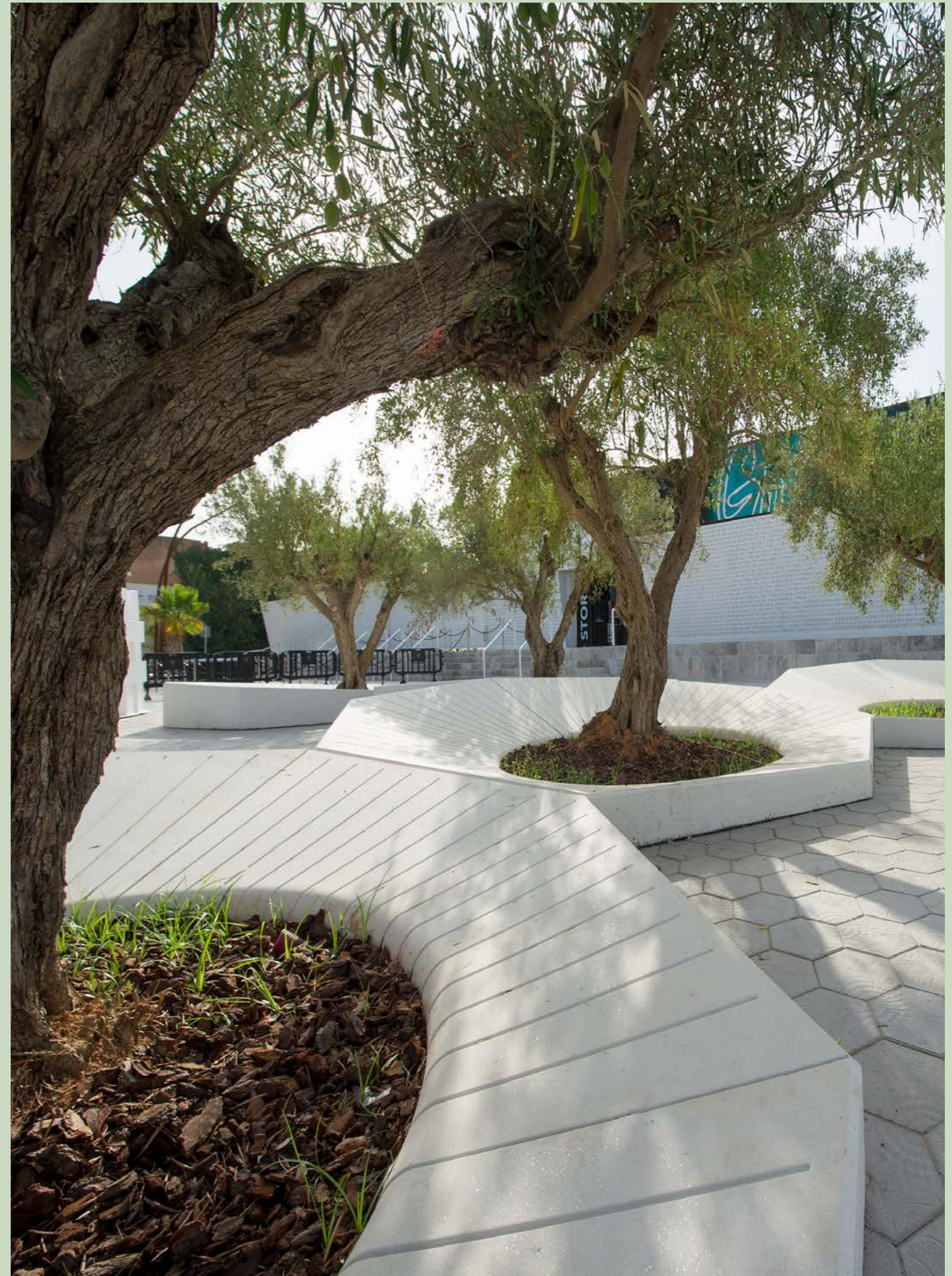


Expanding children's play opportunities through the use of new materials which allow them to play in a warm, safe, non-segregated, well-integrated environment in the urban environment.

Promote the active use of public space through the design of new elements, well integrated into the landscape and the material of streets and squares.

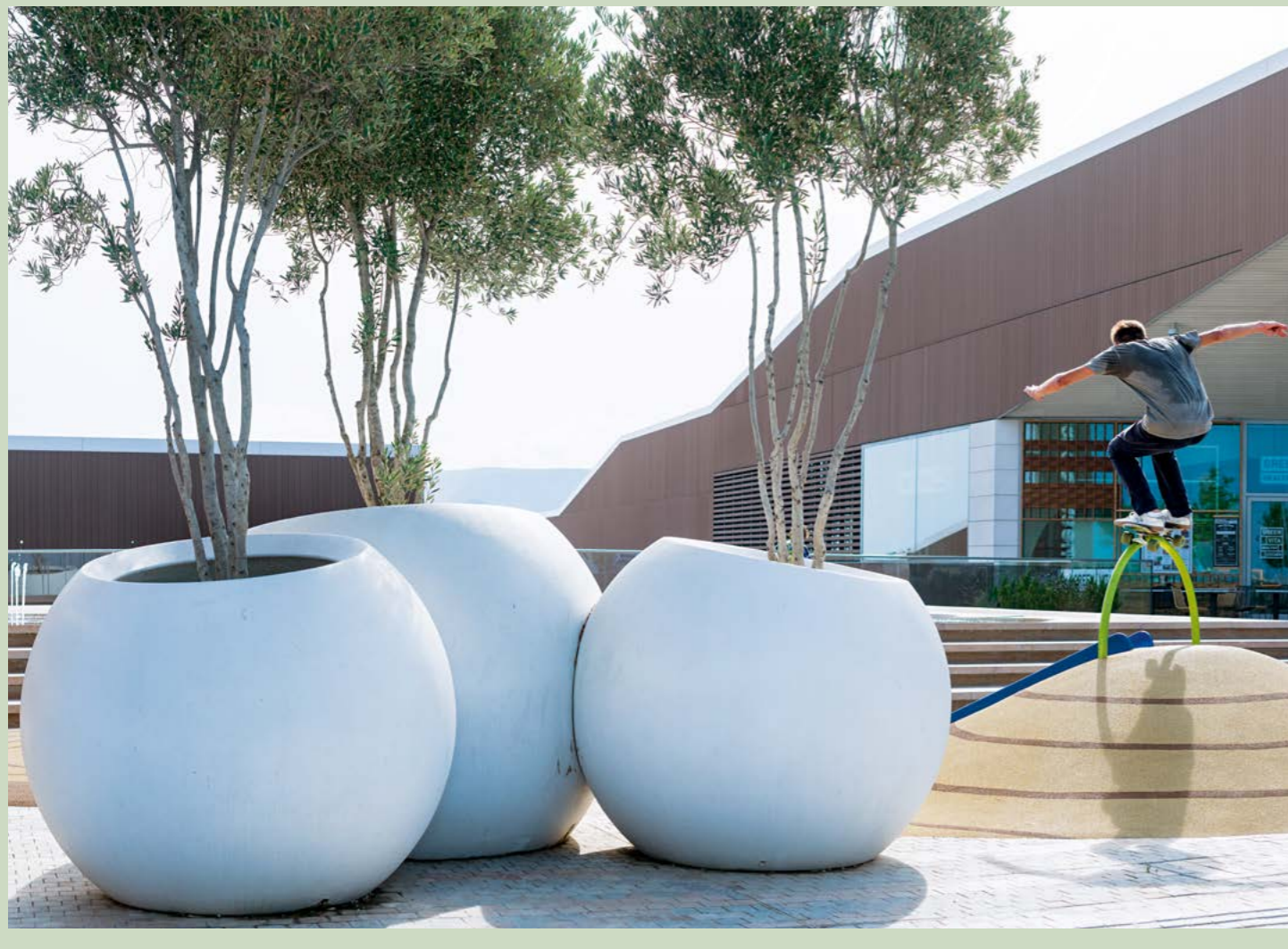


Green city





More green areas and protection of biodiversity are the main preconditions for promoting change in urban models which aim to re-nature compact cities.





Green acupuncture through the design of planters or mixed elements to promote the generation of green spots in the city and at the same time to facilitate the care and embellishment of the streets, whether installed in isolation, aggregated or combined with benches.

Expanding green areas through the use of islands made of modular, earth-filled benches aimed at creating customized green bags.

Expanding shady areas by using elements that facilitate the planting of trees and shrubs.



Walkable city



A set of urban furniture to improve mobility and accessibility, combining functionality, good design and integration in various traffic flows and conditions.





Increasing safety on the streets, through the use of urban furniture to protect pedestrians and discourage vehicles.

Friendly anti-intrusion solutions through the use of planters and benches which at one and the same time enhance safety, security, limits and protection, and also the value of a good landscape design.

The victory over asphalt through the design of pavement expansion platforms and mini-parks designed to conquer the asphalt and humanize the streets, replacing parking spaces with green and resting areas and expanding pavements for the benefit of pedestrians.

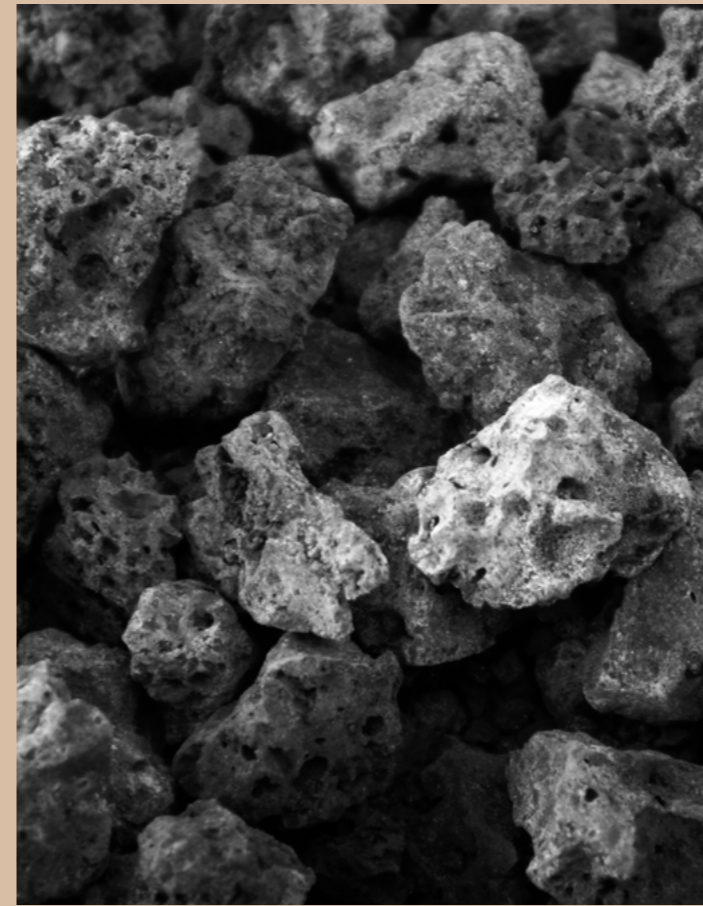


Sustainable city





A city which recognizes the importance of products, materials and production processes that take the environment into account, designed to ensure the conservation and protection of natural resources.



Promoting the circular economy with the design of sustainable urban elements and the continuous reduction of the environmental impacts of industrial and productive processes.

Reducing the environmental impact through the use of new materials.



Materials





Concrete

The use of concrete in public space ensures is a good option, thanks to its durability, high strength, low maintenance and manufacturing flexibility, and a wide range of finishes, in both texture and colour.

Landscaping

Individual elements for urban spaces designed to clothe the new environments of the city with design and personality.

Organic forms

The rounded appearance and comfortable feel of cast concrete endow the products with visual and tactile softness.

Finish and colour

Colour is ever more necessary in public space; tactical urban planning opens up the possibility of playing with colour and composition.

Durability and strength

Moulded concrete products require no specific maintenance throughout their useful life, which is estimated to surpass 30 years.

Easy to install

Their considerable weight means they are generally supported just on the ground; when this is not possible they are anchored. Their design incorporates systems to facilitate loading, unloading and moving them around later.

Easy maintenance

Cleaning with pressurized water, as well as the replacement of the protective waterproofing treatment originally applied to the surfaces.

FSC® Certified wood

Wooden elements are an excellent option for the design of healthy, inclusive and diverse environments. The properties of wood include its softness to the touch, its lightness and the ability to retain its shape in the face of warping caused by humidity or extreme drought.

Soft shapes

Its warm, rounded shapes endow the collection with visual and tactile softness.

Lightness

Weight does influence some projects such as interior areas or ephemeral projects where priority is given to mobility without machinery.

Sustainability

Urban furniture made with FSC® certified wood. Our goal is to reduce CO2 emissions and contribute to environmentally friendly and socially beneficial forestry.

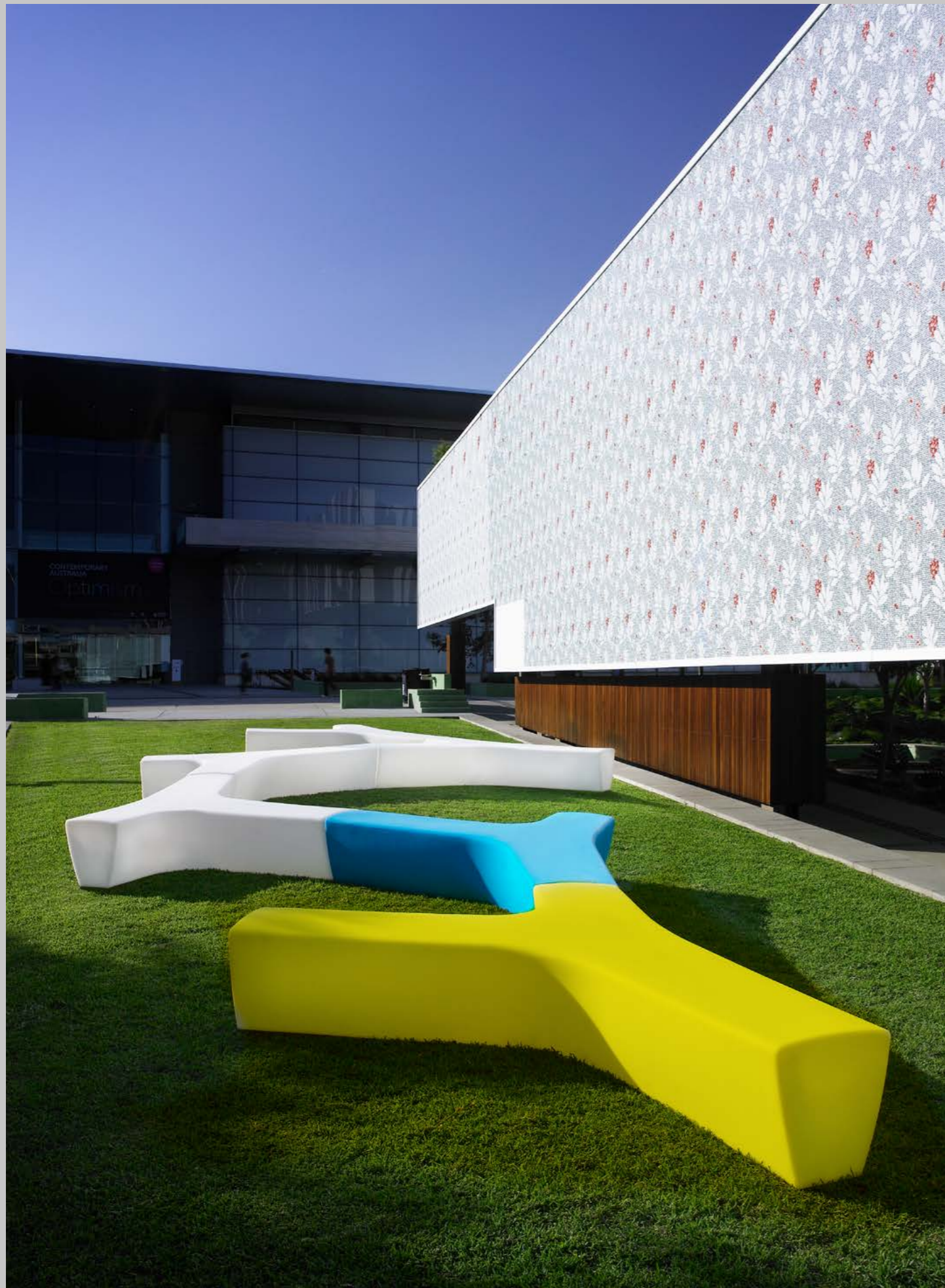
Quick set-up

It can be installed with easily reversible accessories or permanently fixed with hidden screws. Or it can be ballasted with sand, in which case no anchoring is needed.

Maintenance

Depending on the type of wood, it requires periodic maintenance to prevent deterioration, and this is the customer's responsibility.





Rotomoulded polyethylene

Rotomoulding of high density polyethylene is a plastic production process that allows the manufacture of hollow or double-walled parts with no seams or residual stress.

Lightness

Weight does influence some projects such as interior areas or ephemeral projects where priority is given to mobility without machinery.

Colorful & playful

Colour is ever more necessary in public space; tactical urban planning opens up the possibility of playing with colour and composition.

Lighting

The white coloured models can incorporate optional LED backlighting, plus, as a novelty, some translucent colours that can be illuminated from the inside, providing colour without the need for RGB LED systems.

Sustainability

Urban furniture made of plastic polymer with a high proportion of recycled and 100% recyclable plastic. Our goal is to transform plastic waste into a valuable product for the urban landscape and spaces for public use.

Smooth shapes

The rounded shape, as well as soft sand-blasted texture, endow the collection with visual and tactile softness.

Quick installation and maintenance

It can be installed with easily reversible accessories or permanently fixed with hidden screws. Or it can be ballasted with sand, in which case no anchoring is needed.

Strength and durability

The material features of HDPE, such as resistance to UV radiation, its excellent all-weather behaviour and easy maintenance, translate into high strength products which maintain their performance throughout their useful life.

