



## **The heart of Barcelona is dressing in green for 9th International Landscape Biennial**

**Ten projects from all around the world compete for the International Landscape Award "Rosa Barba"**

---

A rug of small plants, invading part of the Plaça Nova in Barcelona the 28<sup>th</sup> of September, will give the starting signal for the 9th International Biennial of Landscape Barcelona, organized by the Architects' Association of Catalonia and the UPC, Universitat Politècnica de Catalunya. BarcelonaTech.

For three days, from 29th of September to 1st of October, landscape intervention will be discussed and studied from an architectural point of view and from other disciplines including its study and evolution.

In the context of the Biennial the "Rosa Barba" International Landscape Prize will award the best project or landscape planning.

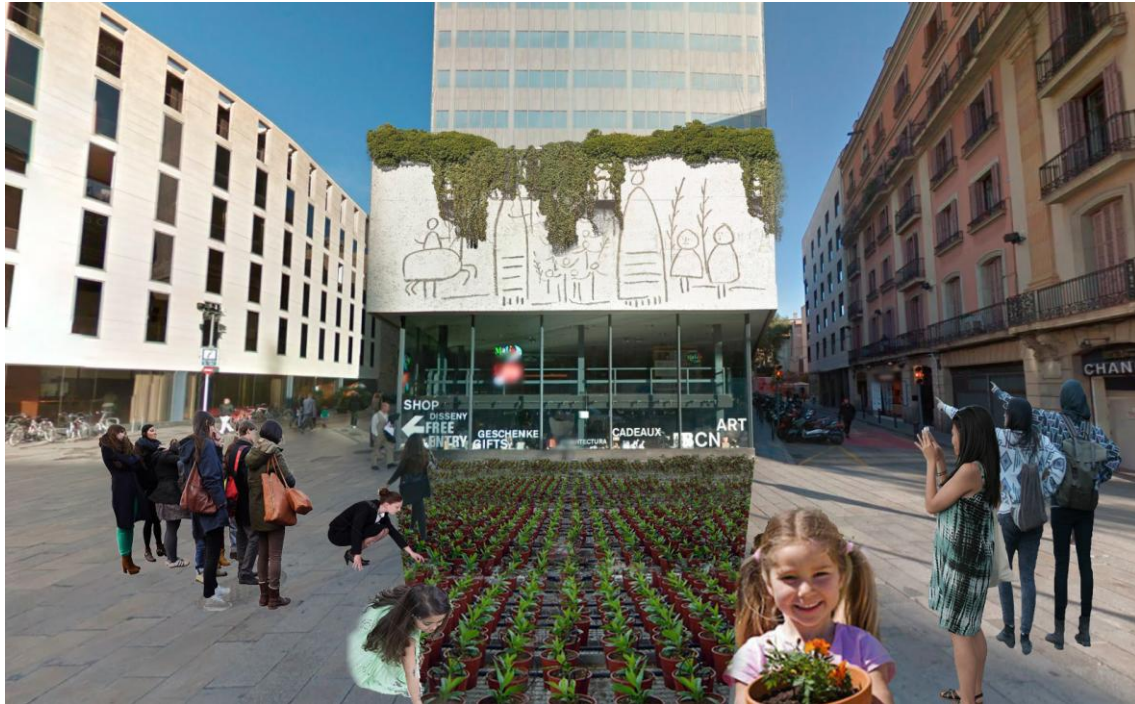
### **28th September 2016**

#### **An ephemeral landscape to inaugurate the Biennial**

On September 28th, a rug of small plants will cover part of Plaça Nova in Barcelona, in front of the Architects' Association of Catalonia, to give the starting signal for the 9th International Biennial of Landscape.

The installation POP UP GREEN, developed by the Biennial with the collaboration of Barcelona City Council, seeks interaction with citizens, who can take over 8,000 plants and leave them in other parts of the city to design landscapes they imagine or demand.

In this way, the installation will be transformed in a social study that will lead to an intervention on spaces with green cover, complaint of empty spaces, games with improvised nature and living installation.



This action of tactical urbanism, dressing in green Ciutat Vella's heart, will serve as a starting point for the Barcelona International Biennial of Landscape Architecture through an act open to the public and designed to attract a non-specialized audience. It will include the opening of two exhibitions organized within the framework of the Biennial: "Desemboscant" Dr. Martí Boada and the Barcelona MAPPING, a projection on the large model of the city about the development of open spaces in the city of Barcelona.

The action will be followed by the presentation of landscape books, including the Catalogue of the 8th International Biennial of Landscape edited by "Paysage".



**29th September 2016**

## **Rosa Barba Prize 2016**

The Jury of the Rosa Barba International Landscape Prize, organized with the support of the Banco Sabadell Foundation, has chosen 10 projects of constructed landscape and approved landscape planning created worldwide between 2011 and 2016 as finalists.

The finalists will present their projects during the symposium, on 29<sup>th</sup> of September. The prize ceremony will take place on 30<sup>th</sup> of September, with an award of 15,000 euros.

This year, the finalists are:



### **Barangaroo Reserve**

Sydney (Australia)

Peter Walker, David Walker, Jay Swaintek and  
Doug Findlay, PWP Landscape Architecture

[http://www.coac.net/paisatge/cat/mostrar\\_project\\_e.php?id\\_projecte=9981&lan=cat](http://www.coac.net/paisatge/cat/mostrar_project_e.php?id_projecte=9981&lan=cat)



### **Renaturation de l'Aire**

Confignon (Switzerland)

Georges Descombes, Julien Descombes and  
Marco Rampini, ATELIER DESCOMBES  
RAMPINI

[http://www.coac.net/paisatge/cat/mostrar\\_project\\_e.php?id\\_projecte=9875&lan=cat](http://www.coac.net/paisatge/cat/mostrar_project_e.php?id_projecte=9875&lan=cat)



### **A Flood Adaptive Landscape: Yanweizhou Park**

Jinhua, (China)

Kongjian Yu, Turenscape

[http://www.coac.net/paisatge/cat/mostrar\\_project\\_e.php?id\\_projecte=9635&lan=cat](http://www.coac.net/paisatge/cat/mostrar_project_e.php?id_projecte=9635&lan=cat)



### **River Forest Island**

Changsha (China)

Xiao Zheng and Sean O'Malley, SWA group

[http://www.coac.net/paisatge/cat/mostrar\\_project\\_e.php?id\\_projecte=9996&lan=cat](http://www.coac.net/paisatge/cat/mostrar_project_e.php?id_projecte=9996&lan=cat)



**The Metro-Forest Project: Bangkok Urban Reforestation**

Bangkok (Thailand)

Tawatchai Kobkaikit and Wannapin Boontarika,  
Landscape Architects of Bangkok

[http://www.coac.net/paisatge/cat/mostrar\\_project\\_e.php?id\\_projecte=9999&lan=cat](http://www.coac.net/paisatge/cat/mostrar_project_e.php?id_projecte=9999&lan=cat)



**Queen Elizabeth Olympic Park**

Londres (United Kingdom)

George Hargreaves, Mary Margaret Jones and  
Gavin McMillan, Hargreaves Associates

[http://www.coac.net/paisatge/cat/mostrar\\_project\\_e.php?id\\_projecte=10055&lan=cat](http://www.coac.net/paisatge/cat/mostrar_project_e.php?id_projecte=10055&lan=cat)



**Landartpark Buitenschot Baixos**

Hoofddorp (Netherlands)

Lodewijk van Nieuwenhuijze, H+N+S

[http://www.coac.net/paisatge/cat/mostrar\\_project\\_e.php?id\\_projecte=9750&lan=cat](http://www.coac.net/paisatge/cat/mostrar_project_e.php?id_projecte=9750&lan=cat)



**Musée Parc Louvre Lens**

Lens (France)

Catherine Mosbach, Mosbach Paysagistes

[http://www.coac.net/paisatge/cat/mostrar\\_project\\_e.php?id\\_projecte=10087&lan=cat](http://www.coac.net/paisatge/cat/mostrar_project_e.php?id_projecte=10087&lan=cat)

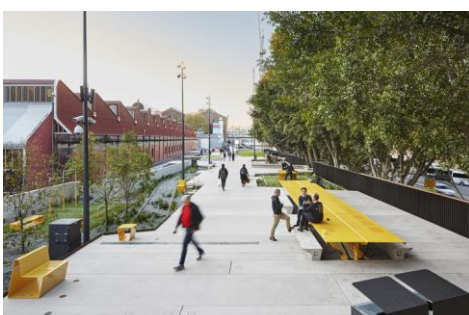


**Superkilen**

Copenhagen (Denmark)

Martin Rein-Cano and Lorenz Dexler, Topotek1

[http://www.coac.net/paisatge/cat/mostrar\\_project\\_e.php?id\\_projecte=9873&lan=cat](http://www.coac.net/paisatge/cat/mostrar_project_e.php?id_projecte=9873&lan=cat)



**The Goods Line**

Sydney (Australia)

Sacha Coles, ASPECT Studios

[http://www.coac.net/paisatge/cat/mostrar\\_project\\_e.php?id\\_projecte=9778&lan=cat](http://www.coac.net/paisatge/cat/mostrar_project_e.php?id_projecte=9778&lan=cat)



The International Jury members for this edition are the following:

- **James Corner**, (president of the International Jury), landscape architect and founder of Field Operations, (USA)
- **Manuel Ruisánchez**, architect, EXCO at the Architects' Association of Catalonia and teacher of the Master of Landscape Architecture in Barcelona. DUOT (UPC) (Spain)
- **Anuradha Mathur**, professor at the University of PennDesign (India)
- **Kathryn Moore**, president of the International Federation of Landscape Architects (IFLA) and professor at the University of Birmingham City University (UK)
- **Eduardo Cadaval**, architect and founder of Cadaval&Sola Morales founder (Mexico).



**James Corner**

(President of the International Jury), landscape architect and founder of Field Operations, (USA)



**Kathryn Moore**

President of the International Federation of Landscape Architects (IFLA) and professor at the University of Birmingham City University (UK)



**Manuel Ruisánchez**

Architect, EXCO at the Architects' Association of Catalonia and teacher of the Master of Landscape Architecture in Barcelona. (Spain)



**Eduardo Cadaval**

Architect and founder of Cadaval&Sola Morales founder (Mexico)



**Anuradha Mathur**

Professor at the University of PennDesign (India)

The event will culminate on 29<sup>th</sup> of September with the official opening of the Exhibition of the International Biennial of Landscape at COAC, Architects' Association of Catalonia, 19,00 h Plaça Nova, 5 08002 Barcelona.

The International Landscape Prize exhibition will expose the projects selected, participating in the Rosa Barba International Landscape Prize. This year, 312 projects were selected, divided into four categories: Articulation, Intersection, Regeneration and Transition. Likewise, there will be the International Exhibition of Projects in Schools of Architecture and Landscape Prize, collecting the best projects from 74 universities around the world.

[0000](#)



### 30th September 2016

#### ***From European to International Biennial of Landscape Architecture***

After the impulse of the previous edition, the 9<sup>th</sup> International Biennial of Landscape Architecture confirms an international dimension both in the Rosa Barba Prize call for recent projects and in the range of contemporary research objectives and debate.

This year the Biennial, entitled "Tomorrow Landscapes" is a catalyst for doubt and a driver to illusions and changes in the field of Landscape Design, in circumstances where territorial and cultural disciplines are ranging from anxiety and emergence.

In the context of a new climate regime, personal or professional indifference is not an option. We will need to (UN) learn concepts, methods and attitudes. The Anthropocene leads us to redesign and rethink the management of territories of nature in arms. We have witness the emergence of professional practice proposals mitigating the effects of climate change (through project or planning), collective demands to rebuild with a new integrative design (rebuild by design), global assessments of the resilience of cities (Un habitat) and demonstrations of citizens with a new concept of landscape as common good to safeguard with tactical projects (guerrilla gardening, tactic urbanism). Tomorrow Landscapes decidedly faces the future, talking about climate and social strategies, declined on the project (s) and process designs in landscape architecture.

The announcing of this year's event suggests interest in discovering new ways of action, while exploring inhospitable areas and guiding discussion towards rethinking old certainties and providing new sensitivities certitudes. Tomorrow Landscapes wants to be present at the discussion of what should be the landscape design and planning nowadays and provide a plausible (and exciting) future. Consequently, the Biennial has revised field and formats, formulas, concepts and objectives of the discipline, while critically contemplates itself as a living landscape platform and watchtower of international landscape movements

**7 speakers of international prestige** will reflect on our theme "Tomorrow landscapes", to promote the debate on the Landscape of tomorrow from a transversal point of view, a Planning actitud.

**2 video tributes** on the landscape architects Michel Corajoud and Jacquec Simon, presented by Karin Helms and Bernadette Blanchon.



**Joan Subirats**

Professor of Political  
Science in the  
Autonomous University  
of Barcelona UAB.



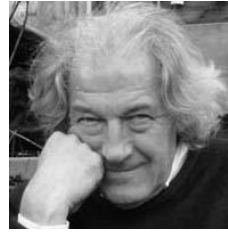
**Anuradha Mathur**

Professor of Landscape at  
the University of  
PennDesign.



**Stig L. Andersson**

Landscape architect,  
founder and Creative  
Director of Copenhagen-  
based SLA.



**Alexandre Chemetoff**

Architect, urban planner  
and landscape architect,  
winner of the Gran Prix de  
l'Urbanisme in 2000.



**Dirk Sijmons**

Professor of Landscape  
Architecture and  
Director of H+N+S  
Landschapsarchitecten.



**Tomàs Molina**

Meteorologist and  
President of the Climate  
Broadcasters Network  
Europe.



**Kate Orff**

Landscape Architect,  
author of Petrochemical  
America, and founder of  
SCAPE.



**1st October 2016:**

**Today in action**

Apart from the reflections on professional practice of tomorrow, Saturday's session on 1<sup>st</sup> of October will give voice to several interesting initiatives being carried out worldwide by urban planners and landscape architects: from interventions of public space in the Syrian refugees' camps, urban resilience programs in developing countries, containment strategies of environmental pollution in large Chinese cities to new ways of professional practice straddling several continents. After the impulse of the previous edition, the 9th Biennial of Landscape Barcelona confirms an international dimension both in the notice of Rosa Barba Prize on recent projects and in the scope of contemporary research objectives and debate.

*Palau de la Música Catalana, Petit Palau. 9,00 a 19,00 h  
Sant Pere Més Alt, s / n. de Barcelona*



**Dan Lewis**

The Chief of the Urban Risk Reduction Unit, UN-Habitat, Kenya.



**Maria Gabriella Trovato**

Professor of Landscape at the American University of Beirut.



**Zhu Yufan**

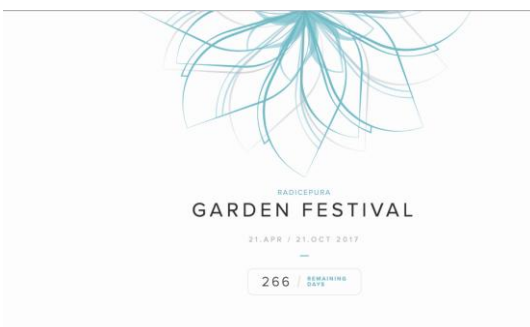
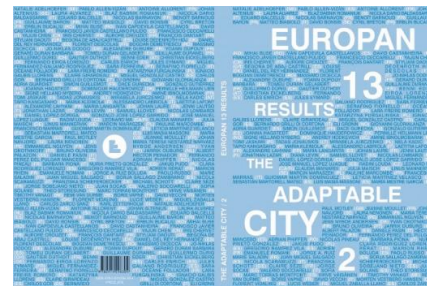
Landscape architect and professor at Tsinghua University (China).



**Henri Bava**

Landscape architect, the director of the Landscape Architecture Department at the Karlsruhe Institute of Technology (Germany). Founder of Agence TER.

**Presentations:**







**2nd October 2016:**

**Technical visits**

The last day of the International Landscape Biennial, the action moves to the outside with the proposed technical guided tours to various landscapes: urban visit - cycling in Barcelona, agricultural past -Parque Natural Pedra Tosca, forest -Collserola and Garraf and natural regenerated Tudela, Cap de Creus.

**More information:**

<http://www.coac.net/landscape/default.html>

<http://www.arquitectes.cat/ca/landscape>

Biennial Internacional de Paisatge: Marina Cervera 93 552 08 42

Àrea de Comunicació del COAC: Marta Milà 93 306 78 45