



Country /City Szczecin

University / School West Pomeranian University of Technology in Szczecin

Academic year 2022/2023

Title of the project Community Garden "Lavender Integration Meadows"

Authors Monika Sek, Aleksandra Rekas

TECHNICAL DOSSIER

Title of the project Community Garden "Lavender Integration Meadows"
Authors Monika Sęk, Aleksandra Rękas
Title of the course Landscape design
Academic year 2022/2023
Teaching Staff Assoc. Prof. Magdalena Czalczyńska-Podolska, PhD, Eng.
Department / Section / Program of belonging
Department of Contemporary Architecture, Design Theory and Methodology
University / School West Pomeranian University of Technology in Szczecin



Written statement, short description of the project in English, no more than 250 words

Project of Revitalization of the Arkońskie Housing Estate in Szczecin -Community Garden "Lavender Integration Meadows"
The subject of the project was the design of a community garden on Chopin Street in Szczecin. The aim of the task was to transform an undeveloped area surrounded by residential buildings from the 1970s into a friendly space for recreation and integration for all occupants. One of the problems with housing estates constructed in the second half of the 20th century, made with industrialized technology is the lack of green areas that foster social cohesion and the limited presence of greenery. The proposed concept is a type of garden integrated into the urban context. The layout features organic pathways that meander gently, blending harmoniously with the landscape's terraced topography. The project includes several functional zones that offer various activities, such as a children's play area and a serene space for meditation surrounded by nature. Great care has been taken to accommodate various needs and forms of relaxation. The ambiance of the space, combined with the carefully selected vegetation, creates a naturalistic atmosphere where leafy trees intertwine with lush meadows adorned with lavender, sage, and other herbaceous and grassy plants. Combined with the surrounding raw architecture, this creates a sense of balance and harmony.

For further information

Máster d'Arquitectura del Paisatge - UPC

Contact via email at:
master.paisatge.comunicacio@gmail.com

biennal.paisatge@upc.edu

Máster d'Arquitectura del Paisatge - UPC

Sede ETSAB - Universitat Politècnica de Catalunya

Calle Jordi Girona, 15. Edificio Omega 1-3
08034 Barcelona - Spain

COAC - Colegi oficial d'Arquitectes de Catalunya

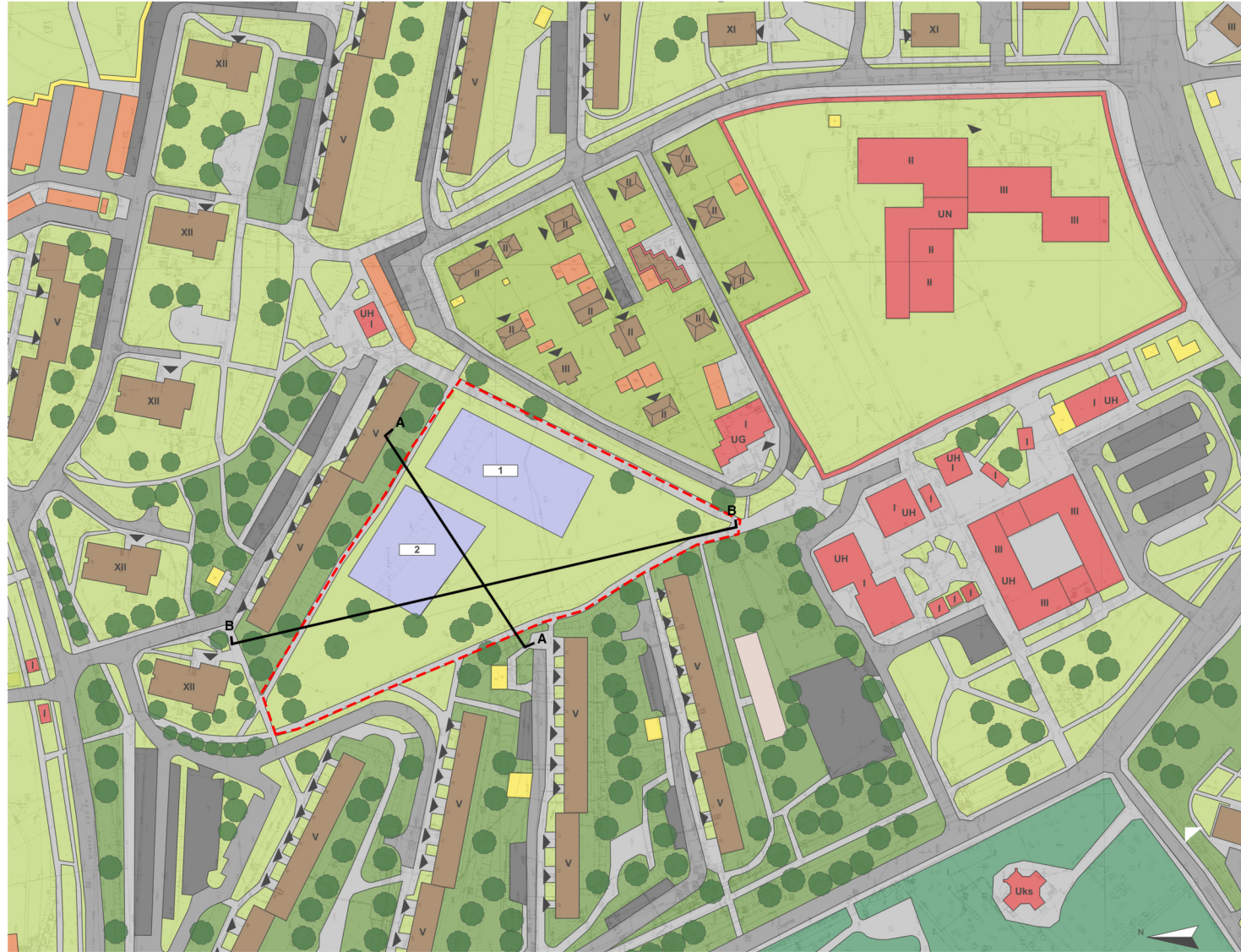
Carrer Arcs, 1-3
08002 Barcelona - Spain

12th International Biennial Landscape Barcelona

Barcelona October 2023

SCHOOL PRIZE

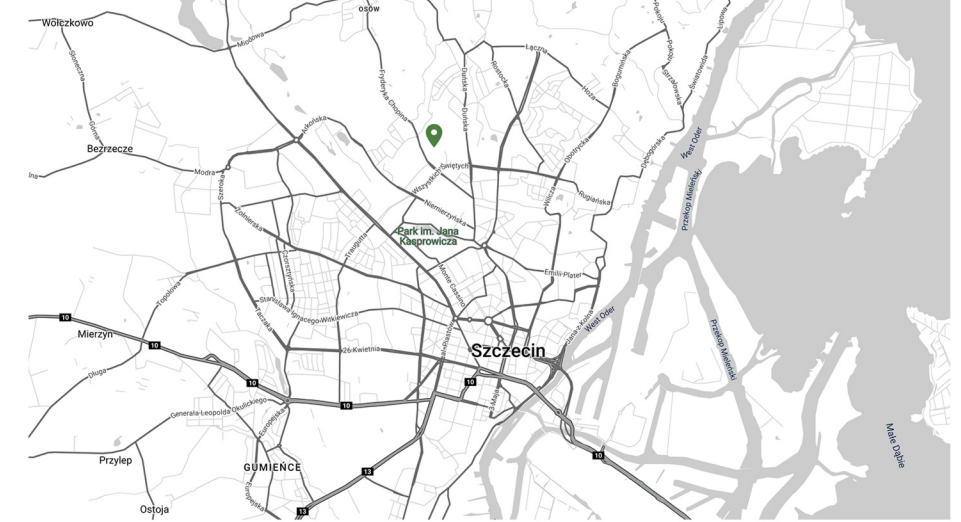
SETTING OF THE AREA



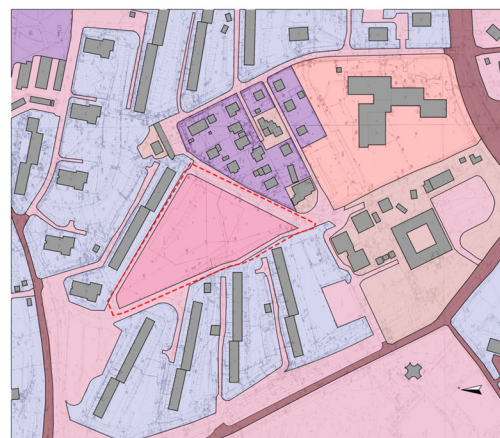
LEGEND

- PROJECT AREA
- BUILDINGS**
 - MULTI-FAMILY RESIDENTIAL BUILDINGS
 - SERVICE BUILDINGS
 - RESIDENTIAL BUILDINGS WITH SERVICES
 - OUTBUILDINGS AND INVENTORY BUILDINGS
 - GARAGES
- ADMINISTRATIVE SERVICES**
 - UN- EDUCATIONAL SERVICES
 - UH- RETAIL SERVICES
 - UG- CATERING SERVICES
 - Uks- RELIGIOUS SERVICES
- SURFACES**
 - ASPHALT PAVED ROADS
 - HARDENED PEDESTRIAN WALKWAYS
 - PARKING LOTS
- GREEN AREAS**
 - GREEN AREAS WITH A PREDOMINANCE OF LOW- HEIGHT VEGETATION
 - GREEN AREAS WITH A PREDOMINANCE OF TALL- HEIGHT VEGETATION
 - BACKYARD GARDENS
 - PARK AREAS
 - ALLOTMENT GARDENS
 - SERVICES AREAS WITH ACCOMPANYING GREEN SPACES
 - PLAYGROUNDS
 - SPORTS AND RECREATION AREAS
 - 1 OUTDOOR GYM
 - 2 SPORTS FIELD
- GRAPHICAL SYMBOLS**
 - ▭ ROOF SHAPE
 - || NUMBER OF STOREYS
 - ▲ ENTRANCES TO THE BUILDINGS
 - TREES AND TREE GROUPS

LOCATION

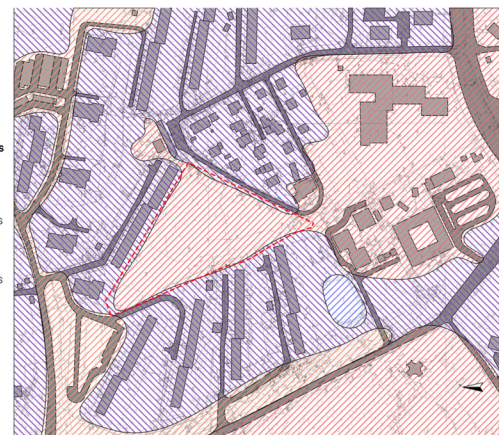


OWNERSHIP PATTERN



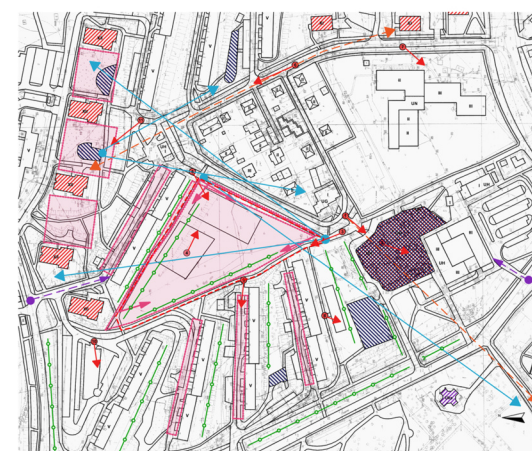
- ### LEGEND
- #### CATEGORIZATION OF SPACE ZONES
- PUBLIC SPACE
 - SEMI-PUBLIC SPACE
 - SEMI-PUBLIC SPACE WITH ACCESS TO SERVICES
 - SEMI-PRIVATE SPACE
 - SEMI-PRIVATE RECREATIONAL SPACE
 - SEMI-PRIVATE SPACE WITH ACCESS TO SERVICES
 - PRIVATE SPACE
 - PROJECT AREA

LAND USE



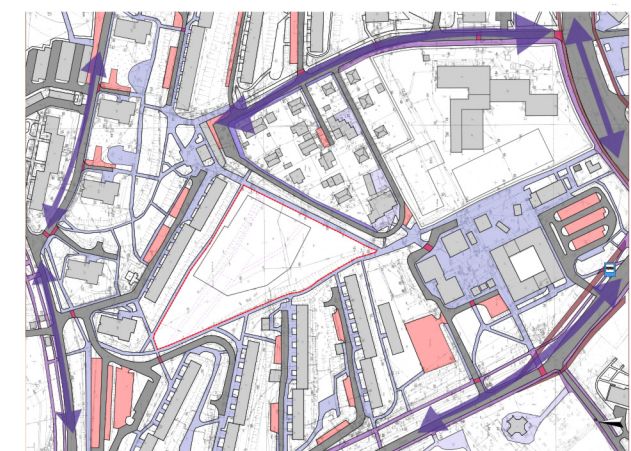
- ### LEGEND
- #### SPACE UTILIZATION INTENSITY
- FREQUENTLY USED SPACE
 - SPORADICALLY USED SPACE
 - NEUTRAL SPACE IN USE
 - UNUSED SPACE
 - PROJECT AREA

LANDSCAPE FEATURES AND ELEMENTS



- ### LEGEND
- #### HARMONIOUS ELEMENTS OF ACTIVE EXPOSURE
- VIEWING PATH
 - VIEWPOINT
 - CLOSURE OF VIEWING AXIS
 - VIEW OPENING
- #### HARMONIOUS ELEMENTS OF PASSIVE EXPOSURE
- ACCENT
 - DOMINANT POINT
 - URBAN INTERIORS
 - TREE ESPALIER
- #### DISHARMONIOUS ELEMENTS OF PASSIVE EXPOSURE
- ACCENT
 - DOMINANT POINT
 - COMPOSITIONAL CHAOS
 - SURFACE DEGRADATION
 - PROJECT AREA

MOVEMENT PATTERNS



- ### LEGEND
- #### BUILT-UP AREA
- RESIDENTIAL BLOCK
 - STREET
 - CAR PARK
 - MAIN FOOTPATH
 - SECONDARY FOOTPATH
 - FOOTPATHS UNDER CONSTRUCTION
 - CYCLE-TRACK
 - PEDESTRIAN CROSSING
 - BUS STOP
 - DIRECTION OF PEDESTRIAN TRAFFIC
 - PROJECT AREA

SECTION A-A



SECTION B-B



SITE DEVELOPMENT CONCEPT SCALE 1:1000

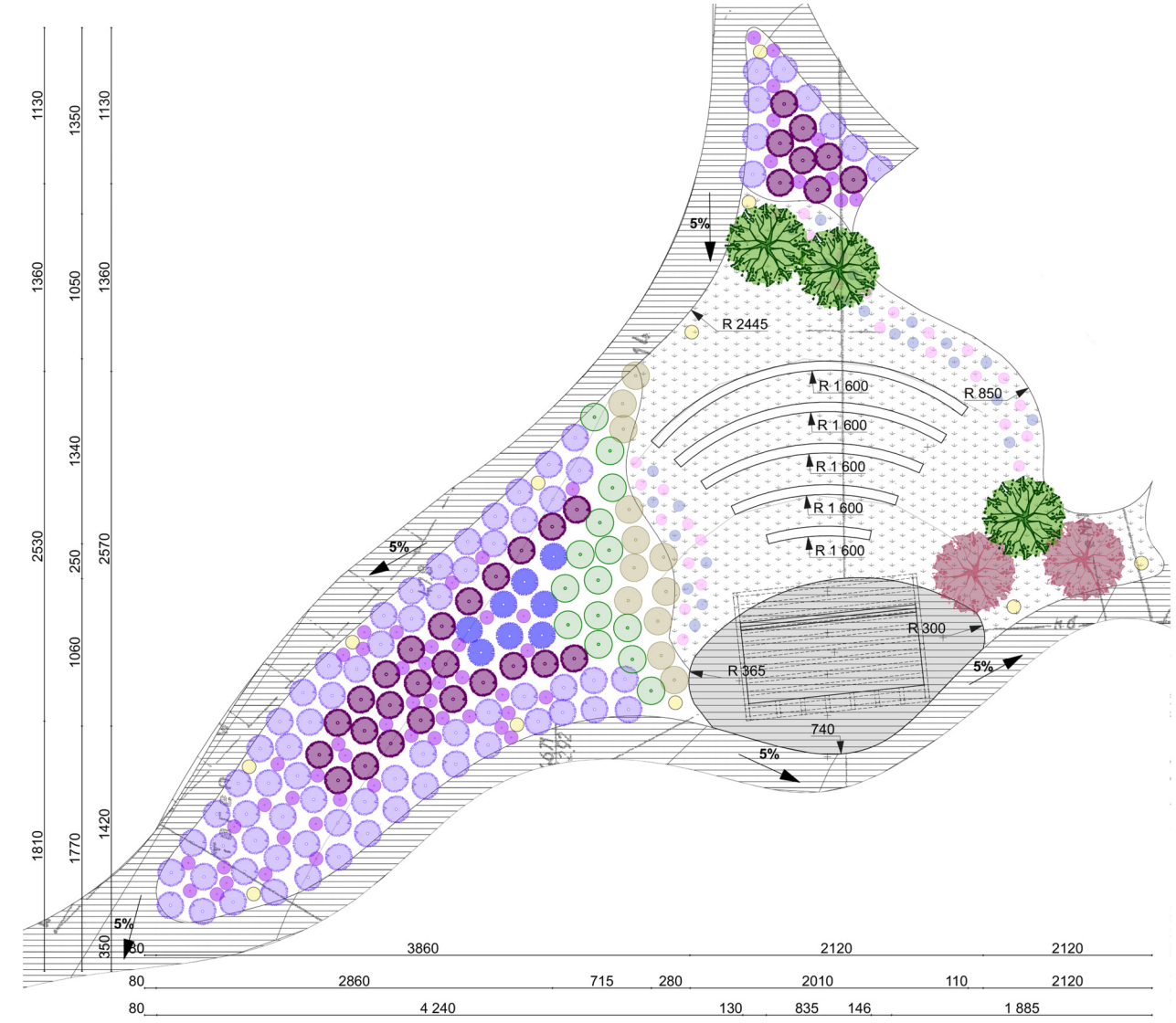


- | | | | | |
|-----------------------------|--------------------|------------------|------------------------|--------------------------|
| LAWN | BOUNDARY PATHS | DECIDUOUS SHRUBS | 1 STAGE | 5 FITNESS ZONE |
| MAIN PATHS
SURFACE: WOOD | MEADOWS | FLOWERING SHRUBS | 2 PICNIC ZONE | 6 MEDITATION ZONE |
| PATHS
SURFACE: STONE | ORNAMENTAL GRASSES | TREES | 3 FIELD KITCHEN | 7 DOG PARK |
| | | | 4 KIDS' AREA | 8 RELAXATION ZONE |

SECTION B-B | SCALE 1:1000

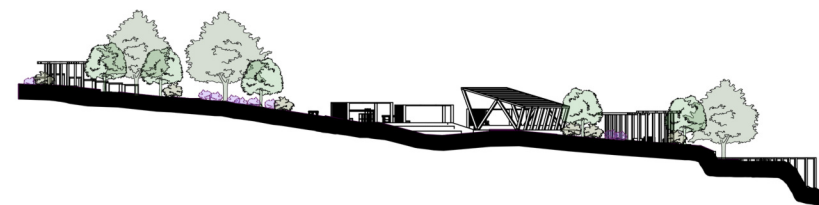


DETAILED URBAN DEVELOPMENT PLAN SCALE 1:500



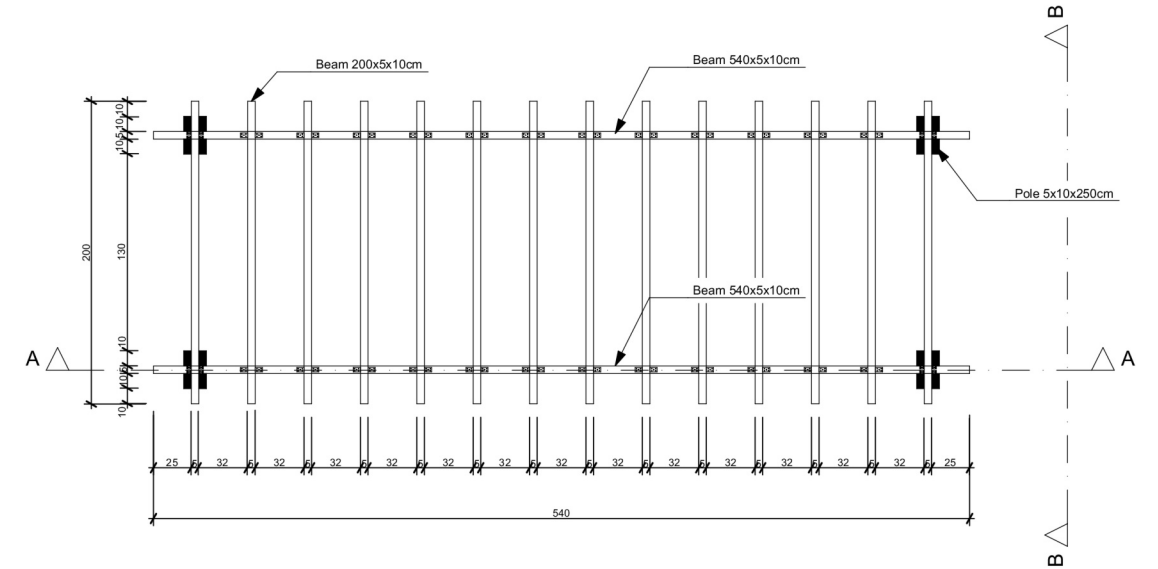
- | | | |
|------------------------|-----------------------|----------------------------------|
| LAVANDULA ANGUSTIFOLIA | MISCANTHUS SINENSIS | THE DIRECTION OF WATER FLOW |
| SALVIA NEMOROSA | CORTADERIA SELLOANA | LAMPS |
| DELPHINIUM ELATUM | CROCUS VERNUS | LAWN |
| ALLIUM GIGANTEUM | GALANTHUS NIVALIS | MAIN PATH
SURFACE: OAK BOARDS |
| BUDDLEJA DAVIDII | HYDRANGEA MACROPHYLLA | |

SECTION A-A | SCALE 1:1000



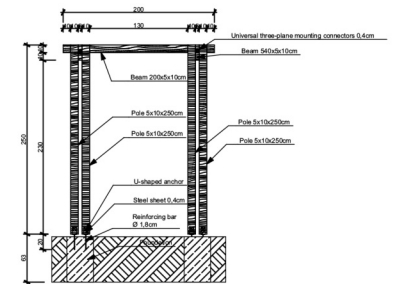
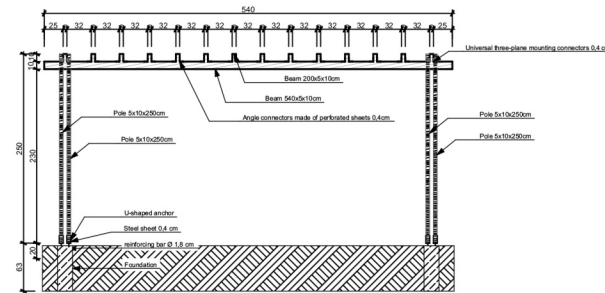


**VIEW FROM ABOVE
SCALE 1:50**



**SECTION A-A
SCALE 1:100**

**SECTION B-B
SCALE 1:100**



**SIDE VIEW
SCALE 1:100**

**SIDE VIEW
SCALE 1:100**



DIMENSIONS: 540X200X250 CM.

IT IS MADE OF PINE WOOD.

THE ARBOUR IS PROPERLY PROTECTED AGAINST HARMFUL FACTORS BY USING PRESSURE IMPREGNATION.

OVERALL HEIGHT: 250 CM.

THE ARBOUR SERVES AS AN ECOLOGICAL AND NATURAL SUPPORT FOR BOTH SEASONAL AND YEAR-ROUND CLIMBING PLANTS.