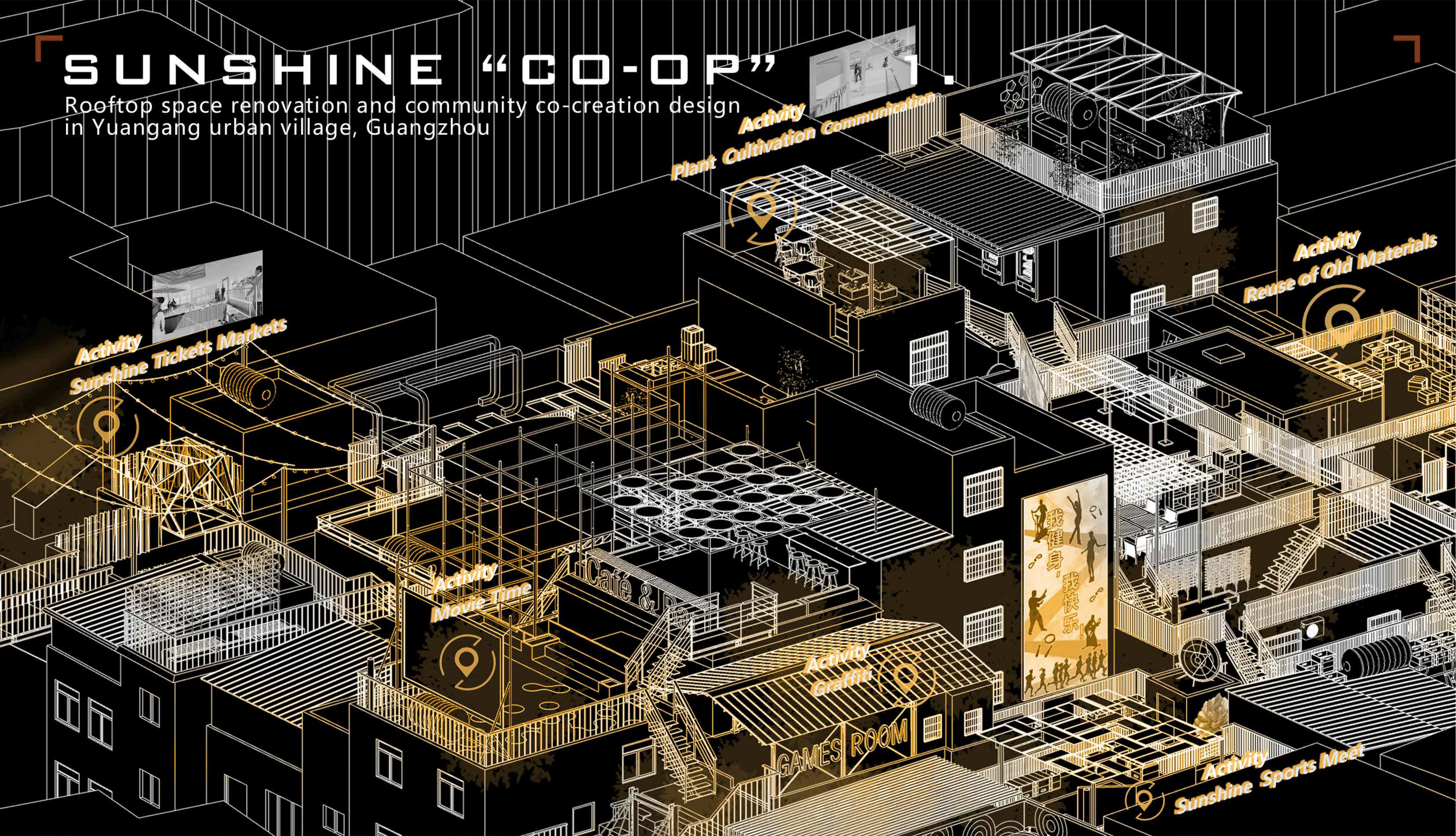


SUNSHINE "CO-OP"

Rooftop space renovation and community co-creation design
in Yuangang urban village, Guangzhou



Country / City	China / Guangzhou
University / School	South China University of Technology / School of Architecture
Academic year	2021-2022
Title of the project	SUNSHINE "CO-OP" - Rooftop Space Renovation and Community CO-Creation Design in Yuangang Village
Authors	Yunhan Liang, Wenjuan Zeng, Xiaoqi He

TECHNICAL DOSSIER

Title of the project SUNSHINE "CO-OP" -Rooftop Space Renovation and Community CO-Creation Design in Yuangang Village
Authors Yunhan Liang, Wenjuan Zeng, Xiaoqi He
Title of the course Landscape Planning and Design Studio - Daily Life
Academic year 2021-2022
Teaching Staff Zili Xu, Guangsi Lin, Lei Xiao, Minzhi Li
Department / Section / Program of belonging Department of Landscape Architecture
University / School South China University of Technology / School of Architecture



Written statement, short description of the project in English, no more than 250 words

Yuangang Village has a high-density of handshake buildings, and residents hardly enjoy natural sunlight in their daily life. Residents are eager to move around in the sun, enjoy nature, and most importantly, establish connections with others on a spiritual level. In modern high-density living environments, rooftop spaces can fulfill people's longing for ground-level activities, create a down-to-earth psychological feeling, and not only express people's longing for nature, but also meet their daily needs for interpersonal communication.

Therefore, we turn our attention to rooftop spaces. In terms of space transformation, the rooftop space is transformed into a ground-level space. We create ground-level spaces that cater to three main groups: the youth, the elderly, and children, each with their own characteristics: the "freedom" towards the sky for the youth, the "life" towards the ground for the elderly, and the "curiosity" towards the unknown for children. In terms of community building, we construct the Sunshine Cooperative Society model, where residents take on different roles in the community and participate in community management and events together. Ultimately, through the combination of space transformation and community building, we seek to improve the relationship between the people in Yuangang Village, nature, and each other.

For further information

Máster d'Arquitectura del Paisatge - UPC

Contact via email at:
master.paisatge.comunicacio@gmail.com

biennal.paisatge@upc.edu

Máster d'Arquitectura del Paisatge - UPC

Sede ETSAB - Universitat Politècnica de Catalunya

Calle Jordi Girona, 15. Edificio Omega 1-3
08034 Barcelona - Spain

COAC - Colegi oficial d'Arquitectes de Catalunya

Carrer Arcs, 1-3
08002 Barcelona - Spain

12th International Biennial Landscape Barcelona

Barcelona October 2023

SCHOOL PRIZE

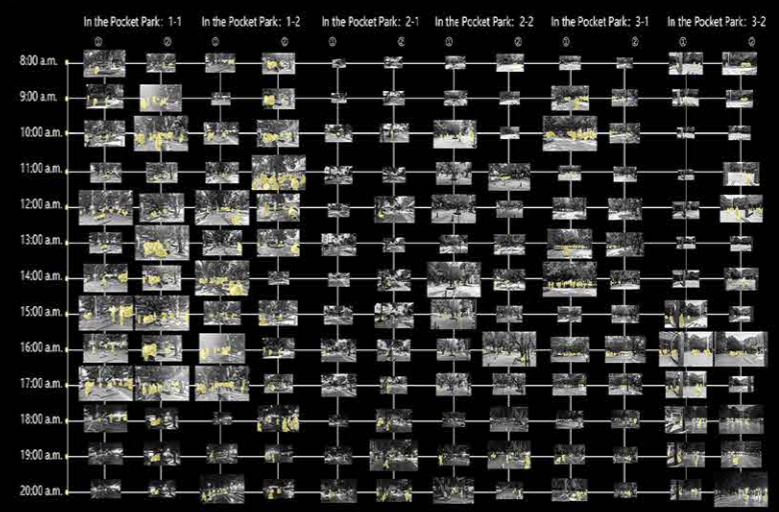
FIXED-POINT OBSERVATION



FOLLOWING MAP

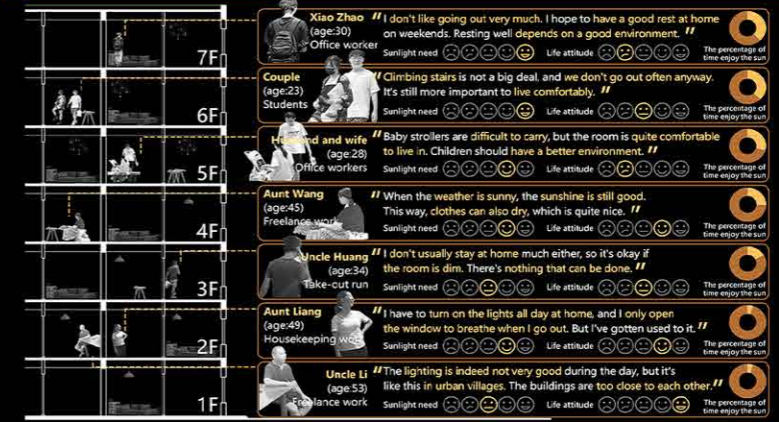


FIXED-POINT OBSERVATION



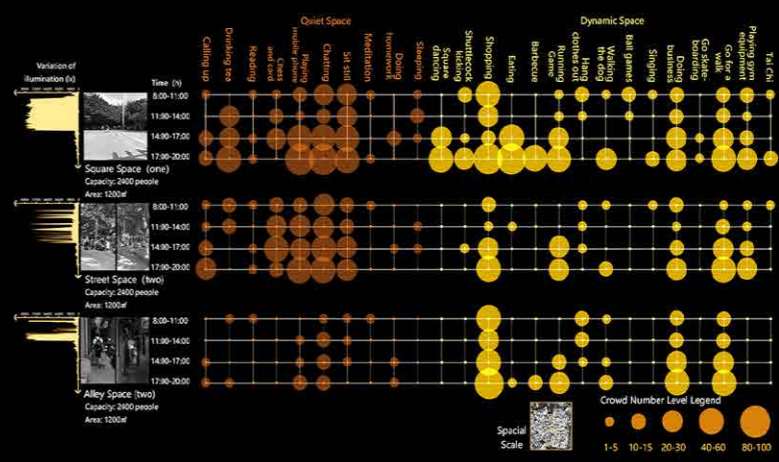
Through targeted observation and recording, we selected several main public spaces in Yuangang as observation sites. From 8:00 AM to 8:00 PM, we recorded the status of these public spaces every hour. It was found that people's activities were concentrated from 10:00 AM to 5:00 PM, and the activity locations were mainly in Public Space 1 and Public Space 3.

INTERVIEWS WITH RESIDENTS



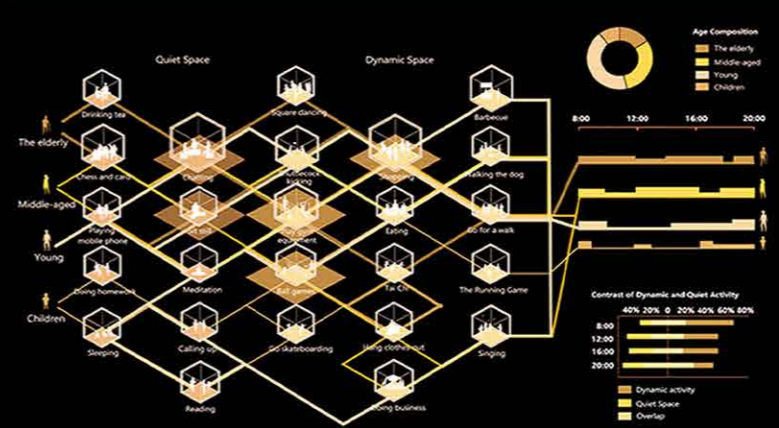
We conducted in-depth discussions with tenants in the Handshake Building to understand their views. Common topics included activity content, location, and personal experience, with "lighting" and "plaza" being the most frequently mentioned terms. They felt that lighting was poor indoors and outdoors, there was a shortage of public space in Yuangang, and ventilation was inadequate. Clothes had to be hung on the roof for drying purposes.

POPULATION STRUCTURE AND ACTIVITIES



By observing the activities of people and changes in lighting in the three main public spaces, we found that there was a strong correlation between the vitality of the space and sunlight. Within a certain range, the stronger the intensity of the lighting, the more diverse the activities of the crowd.

THE INFLUENCE OF LIGHT ON ACTIVITY

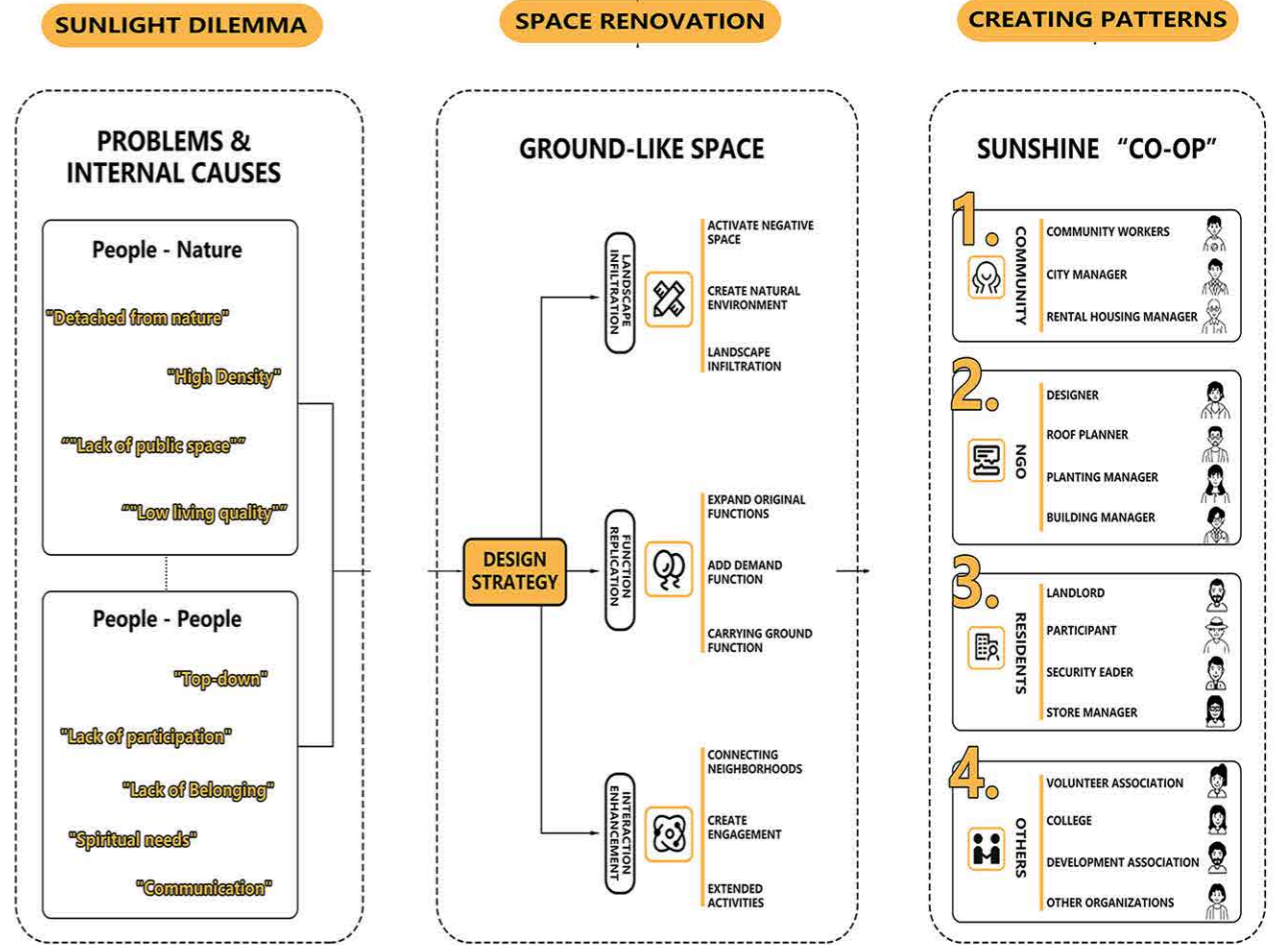


The survey results indicate that middle-aged and elderly people were more active in the morning, while young and middle-aged people were more active in the evening. The permanent population in the area was mainly composed of young and middle-aged people. Dynamic activities were more common than static ones, with a high degree of overlap and significant mutual interference.

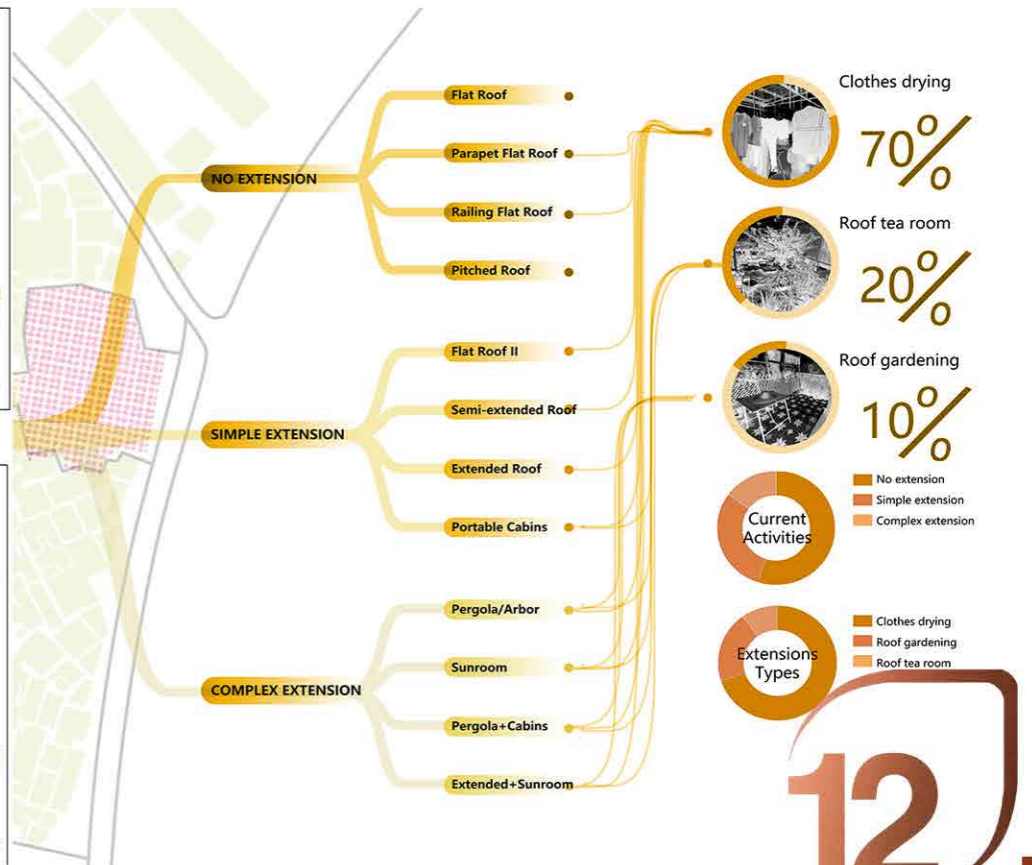
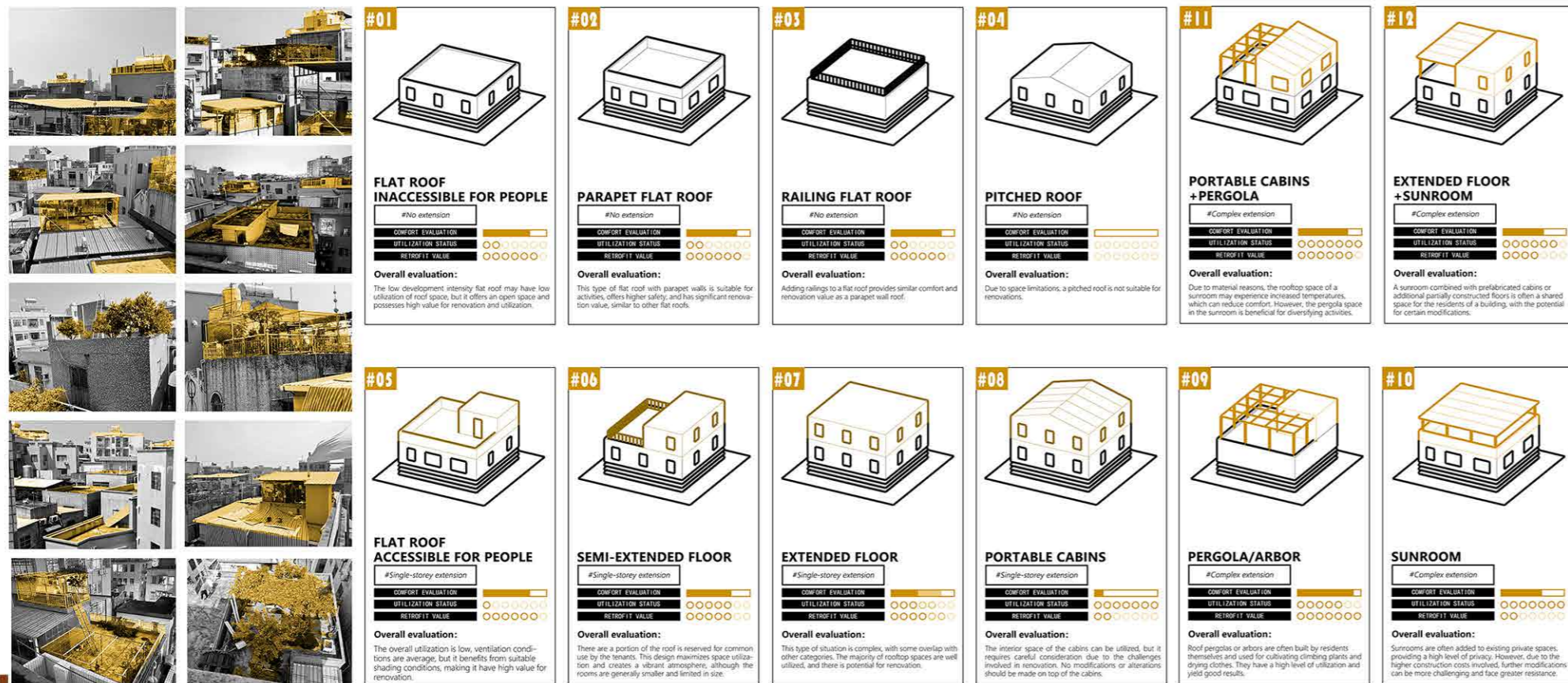
MASTER PLAN

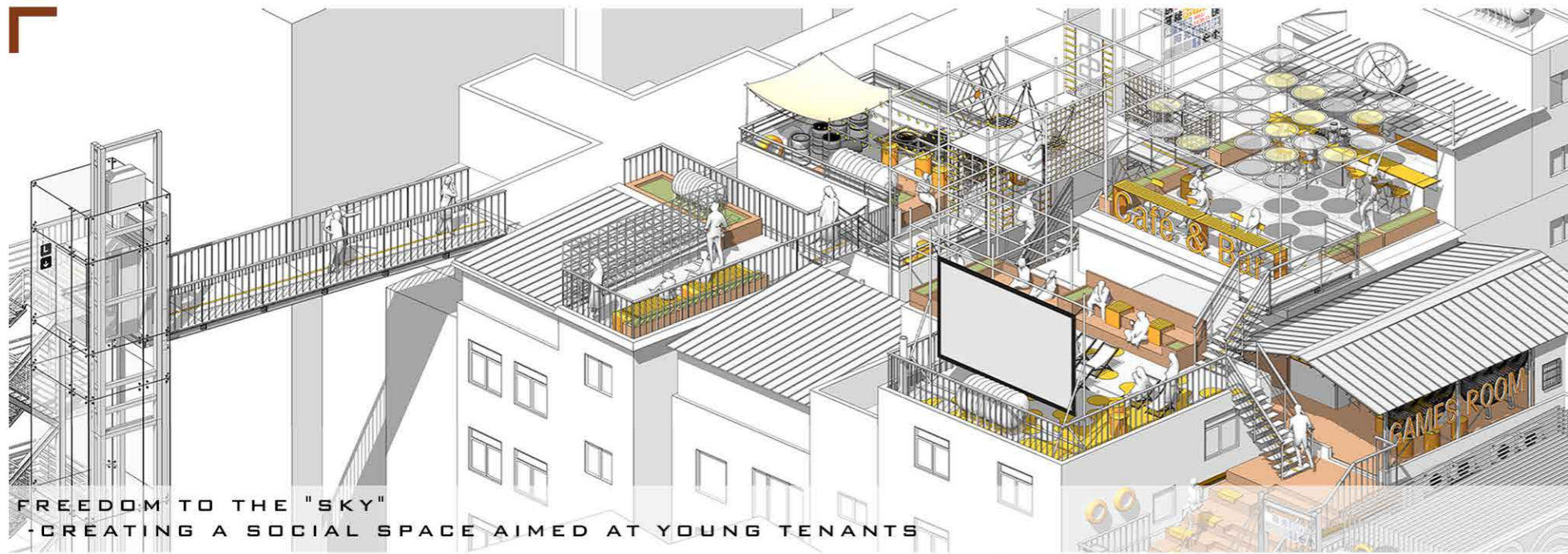


DESIGN STRATEGY



ROOF TYPOLOGY CLASSIFICATION

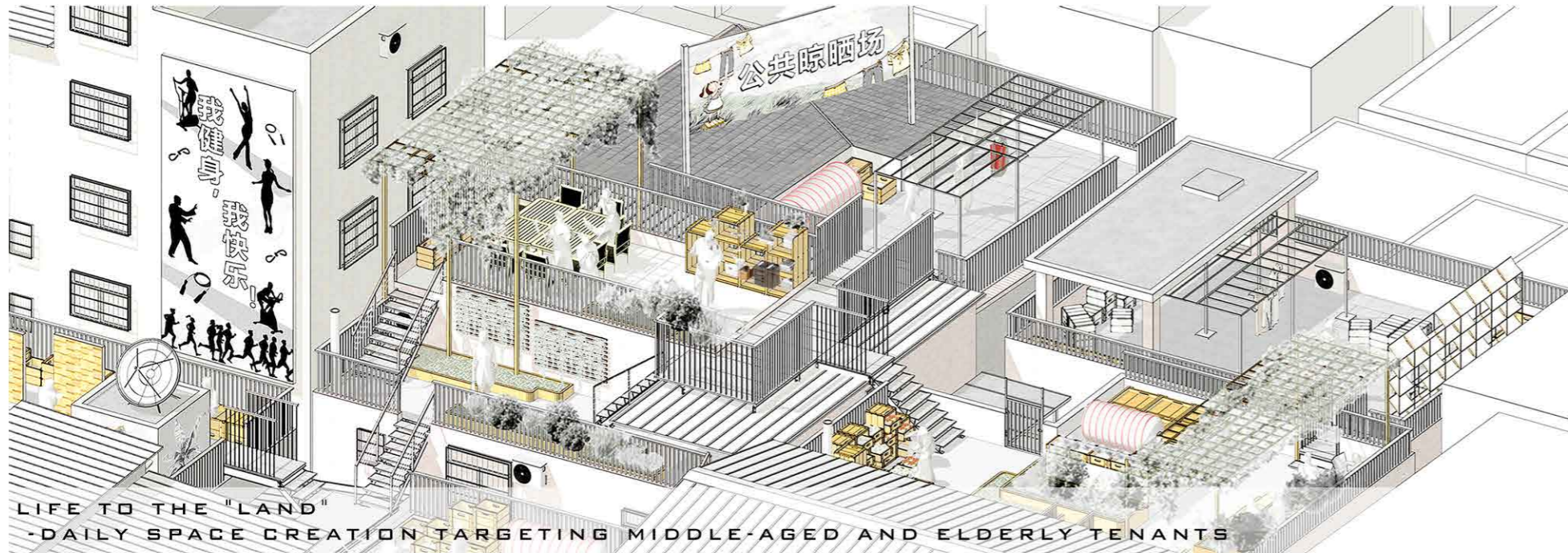




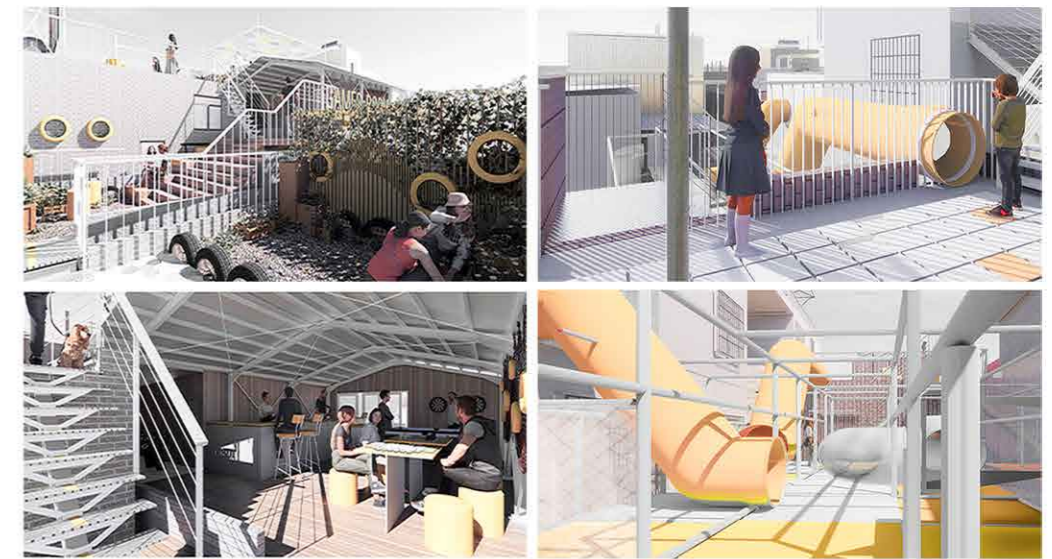
FREEDOM TO THE "SKY"
- CREATING A SOCIAL SPACE AIMED AT YOUNG TENANTS



VENUE 1
Targeting the young population in Yuangang, given the distinctive features of identification and street vitality at Venue 1, we propose to incorporate design elements such as sunshine, beach, and deck to create social spaces, such as casual coffee shops and outdoor cinemas.



LIFE TO THE "LAND"
- DAILY SPACE CREATION TARGETING MIDDLE-AGED AND ELDERLY TENANTS



VENUE 2
Venue 2 caters to middle-aged and elderly tenants, creating a down-to-earth atmosphere through a focus on planting spaces. Community events such as rooftop farming and planting workshops are regularly hosted to promote resident participation in community building.



CURIOSITY TO THE "UNKNOWN"
- PARENT-CHILD SPACE CREATION AIMED AT CHILDREN'S NATURAL PERCEPTION



VENUE 3
Venue 3 is designed as a space for children's exploration and discovery. Using the height differences of the site, along with structures, paving, and plants, children can freely explore and play, discovering nature in activities such as sliding adventures and jumping games.