



Country /City .....  
University / School .....  
Academic year .....  
Title of the project .....  
Authors .....

GREECE  
TECHNICAL UNIVERSITY OF CRETE  
2022-2023  
MINERAL LANDSCAPE FRAGMENTS: RECONSTRUCTING QUARRY REMNANTS AT TOURKOVOUNIA HILL  
ELENI FILI

**TECHNICAL DOSSIER**

Title of the project MINERAL LANDSCAPE FRAGMENTS: RECONSTRUCTING QUARRY REMNANTS AT TOURKOVOUNIA HILL  
Authors ELENI FILI  
Title of the course THESIS PROJECT  
Academic year 2022-2023  
Teaching Staff PANITA KARAMANEA  
Department / Section / Program of belonging SCHOOL OF ARCHITECTURE  
University / School TECHNICAL UNIVERSITY OF CRETE



**Written statement, short description of the project in English, no more than 250 words**

The area of former quarry activity of the Tourkovounia hill, within the basin of Attica, was chosen as the object of study. On the borders of two non-homogeneous municipalities, Galatsi and Filothei - Psychiko, a huge mass of stones emerges. There the landscape looks residual. The monstrous machines of the 'LATO' and 'KEKROPS' quarrying industries left their spatial footprint making any form of life inadmissible. The remaining hills stand out in complete disconnection from the urban fabric that spreads all around it. Irregular stone figures, visibly larger than human scale, take form. The urban integration of this place is deemed necessary. Through the present study, an attempt is made to assign an identity to the space, to transform it into a receiver of functions, able to contribute in terms both of collectivity and landscape, to the appropriation of public space and its participation in the creation of urban cohesion.

**12th International Biennial Landscape Barcelona**

**Barcelona October 2023**

**SCHOOL PRIZE**

For further information

**Máster d'Arquitectura del Paisatge - UPC**

Contact via email at:  
master.paisatge.comunicacio@gmail.com

biennal.paisatge@upc.edu

**Máster d'Arquitectura del Paisatge - UPC**

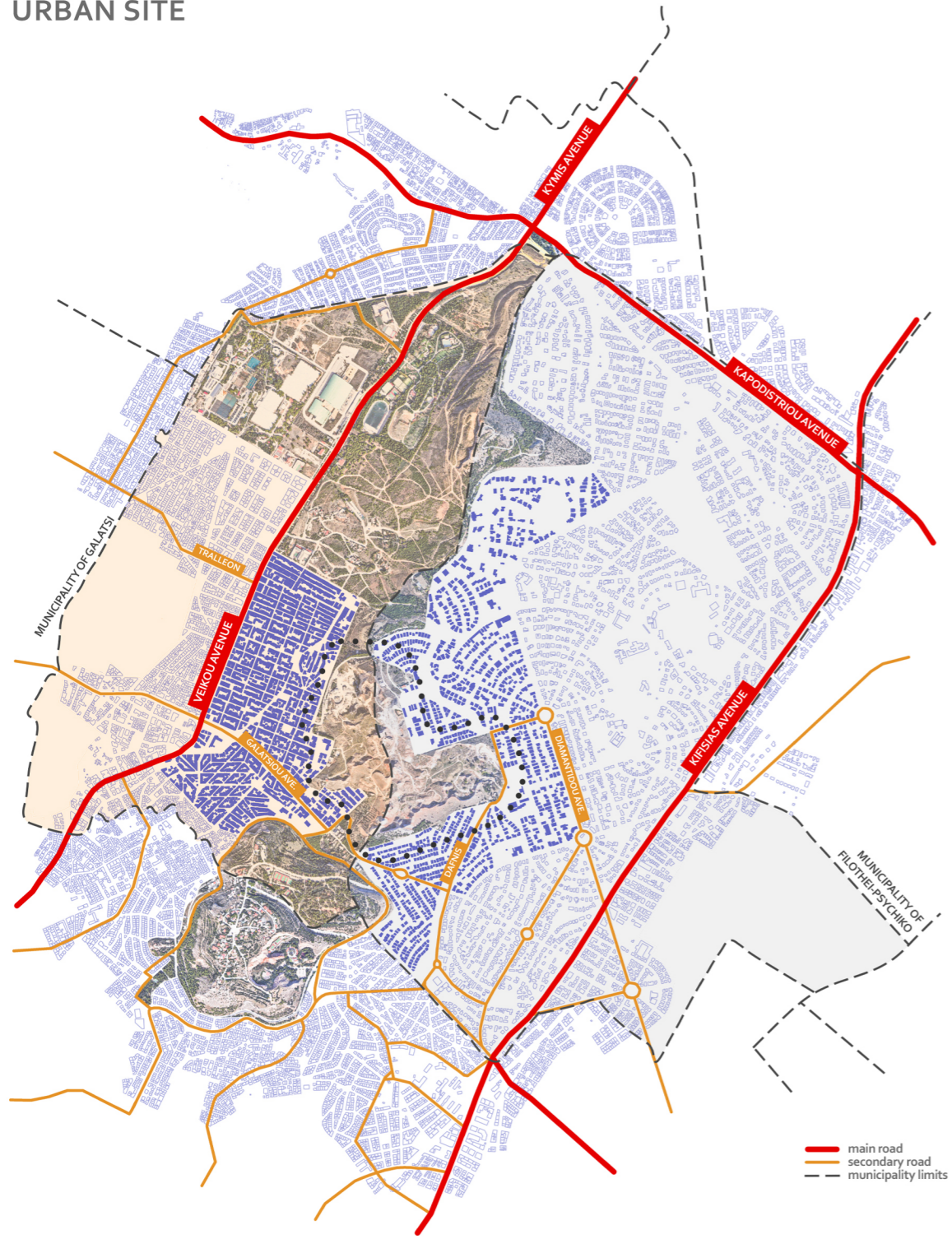
Sede ETSAB - Universitat Politècnica de Catalunya

Calle Jordi Girona, 15. Edificio Omega 1-3  
08034 Barcelona - Spain

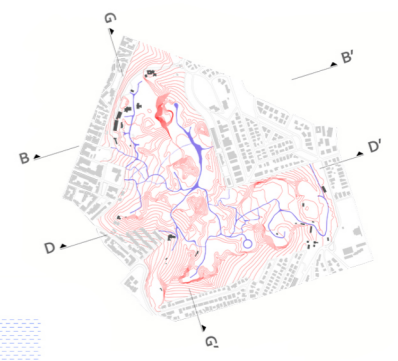
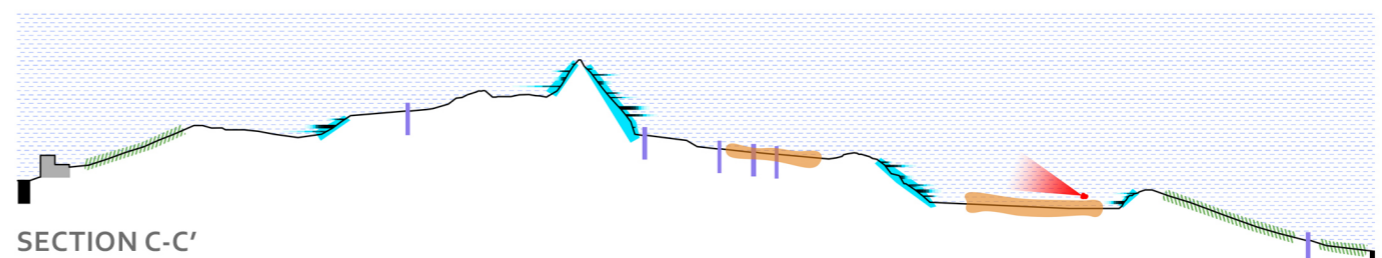
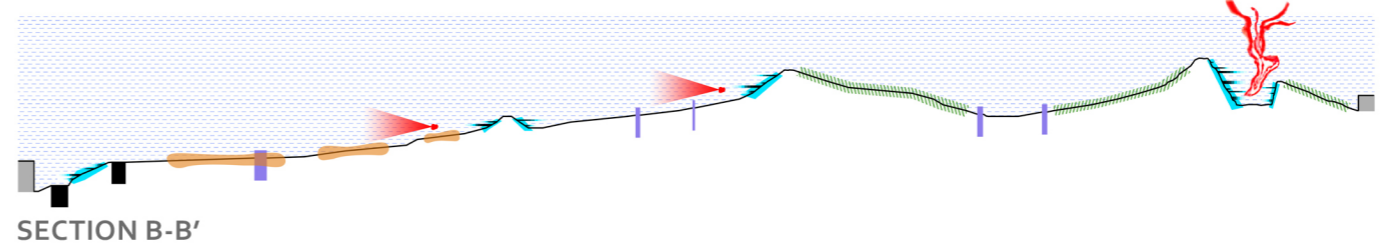
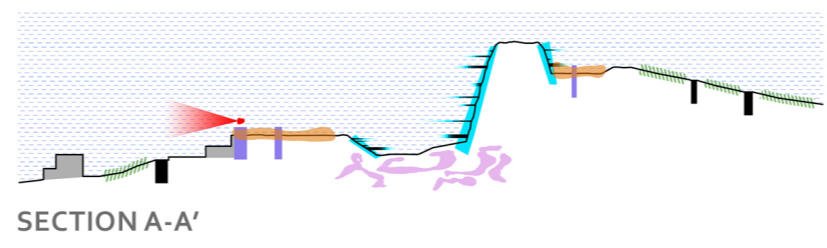
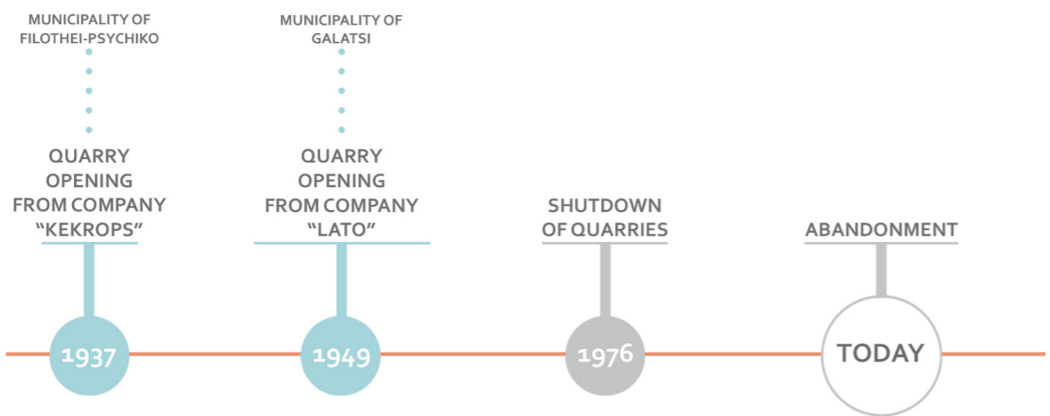
COAC - Colegi oficial d'Arquitectes de Catalunya

Carrer Arcs, 1-3  
08002 Barcelona - Spain

URBAN SITE



— main road  
— secondary road  
- - - municipality limits

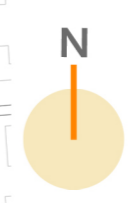


TERRITORIAL OUTBREAKS

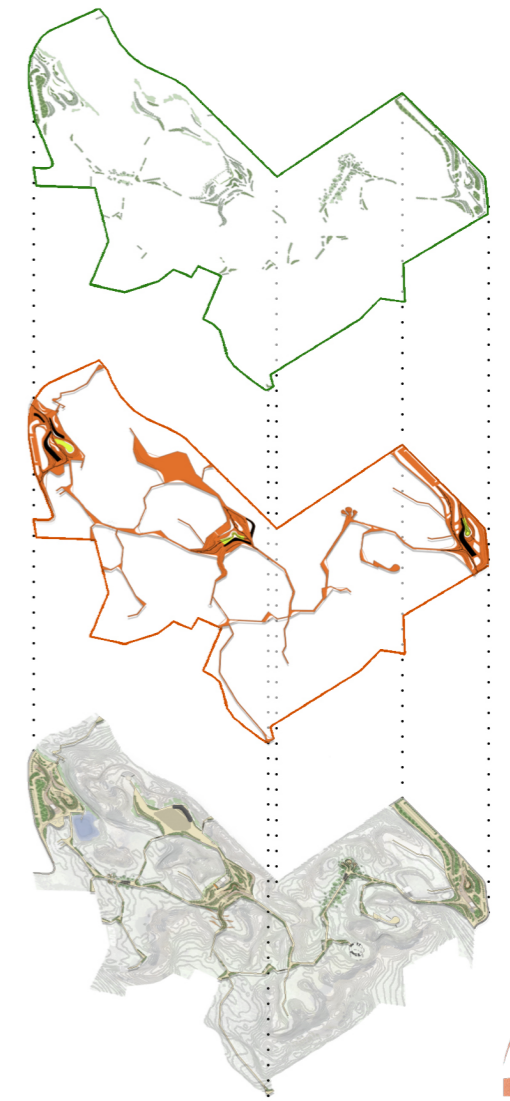


SPACIAL ANALYSIS

# MASTERPLAN



- ▲ main entrance
- ▲ secondary entrance
- route
- 1 Galatsi municipality square
- 2 central square
- 3 Filothei-Psychiko municipality square
- 4 viewpoint
- 5 playground
- 6 waterpark
- 7 venue
- 8 open-air exhibition
- 9 open-air theatre
- 10 rock climbing area
- 11 motocross race track
- 12 outdoor seating area
- 13 forest
- 14 viewing platform
- 15 café-restaurant
- 16 café
- 17 WC
- 18 elevator
- 19 stair
- 20 parking area



ADDED VEGETATION

ROUTE

EXPLODED AXONOMETRIC DIAGRAM



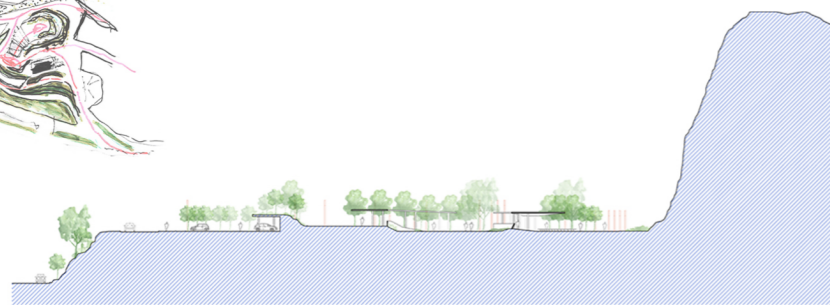
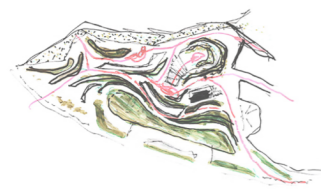
1 PLAN OF FILOTHEI-PSYCHIKO MUNICIPALITY SQUARE



2 PLAN OF CENTRAL SQUARE



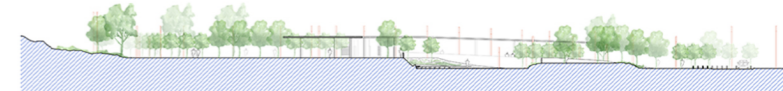
3 PLAN OF GALATSI MUNICIPALITY SQUARE



SECTION

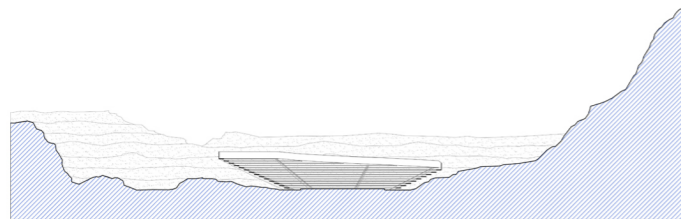


SECTION



SECTION

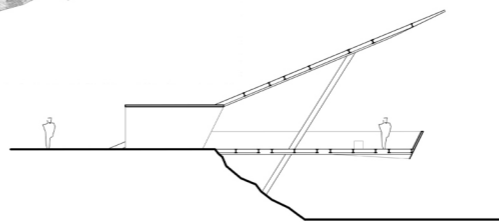
4 OPEN-AIR THEATRE



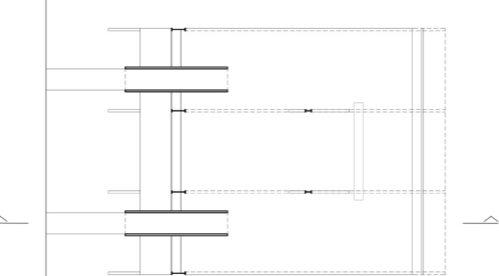
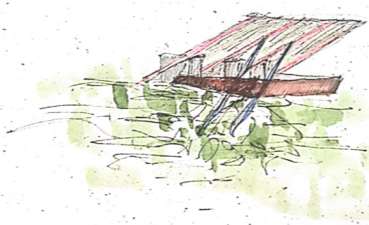
SECTION



5 VIEWPOINT

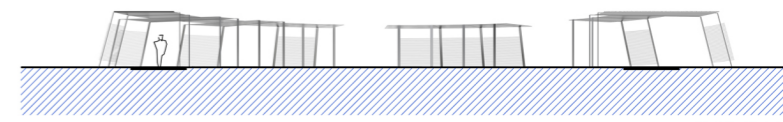


SECTION

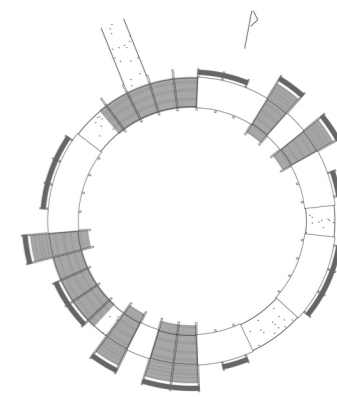
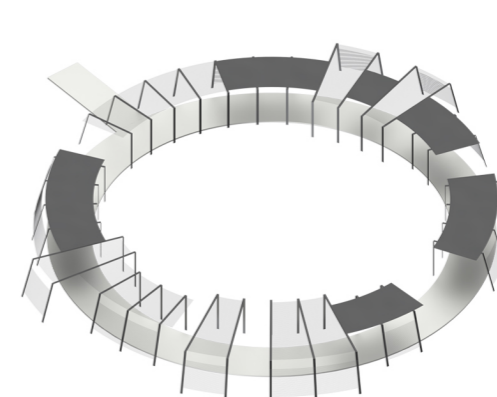


PLAN

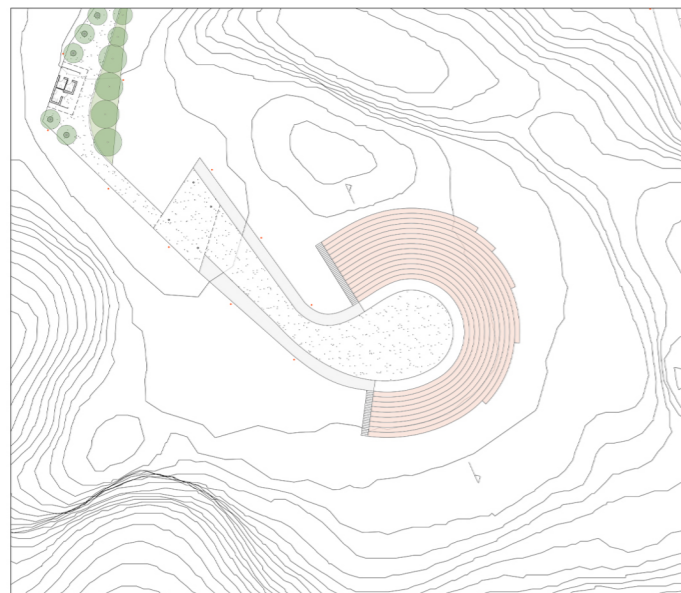
6 OPEN-AIR EXHIBITION



SECTION



PLAN



PLAN