

TECHNICAL DOSSIER

Title of the project	Between Landscape Fragments and the Residential Footprint: a Narration of Symbiosis.
Authors	Konstantina Pagkalou
Title of the course	Diploma Thesis
Academic year	021-2022
Teaching Staff	Panagiota Karamanea
Department / Section / Program of belonging	Urban and Landscape Design
University / School	Technical University of Crete/ School of Architecture



Written statement, short description of the project in English, no more than 250 words

The project examines the area of Stavros Akrotiri, a coastal region in Crete, and its surroundings. It is a resort settlement that developed within a landscape with a unique geological context.

Initially, the uniqueness of the area is emphasized as a place of contrasts: on one hand, a settlement with limited public space, developed in a labyrinthine manner, and on the other hand, a fragmented and difficult-to-access natural landscape that is highly privatized. Seeking balance in the coexistence of these two aspects, the project attempts to redefine the boundaries of the settlement; providing space for the natural landscape and organically articulating the two worlds.

Subsequently, the study focuses on the archaeological settlement, the ancient Venetian quarry (located in the rockiest part of the coast, separating the two beaches) as a space between the natural and the human-made. Using its structure and form as a tool, it seeks to bridge the contradictions and create a new urban system: a system of connections, public spaces, paths, and public buildings with cultural uses.

Finally, a new character is sought for the settlement, one that is more compatible with the symbiotic relationship aspired to in this research. A scenario of uses is configured, aiming for a common presence of culture, local producers, and leisure in public space, with a focus on the two new squares of the settlement and the buildings that frame them.

For further information

Máster d'Arquitectura del Paisatge - UPC

Contact via email at:
master.paisatge.comunicacio@gmail.com

biennal.paisatge@upc.edu

Máster d'Arquitectura del Paisatge - UPC

Sede ETSAB - Universitat Politècnica de Catalunya

Calle Jordi Girona, 15. Edificio Omega 1-3
08034 Barcelona - Spain

COAC - Colegi oficial d'Arquitectes de Catalunya

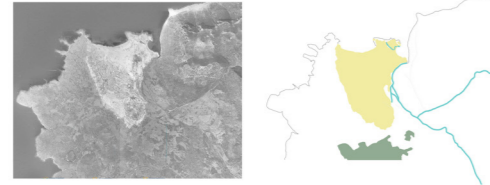
Carrer Arcs, 1-3
08002 Barcelona - Spain

12th International Biennial Landscape Barcelona

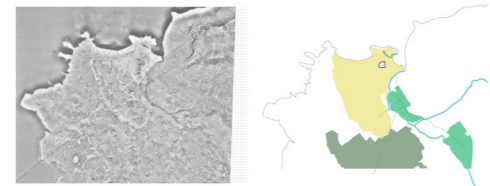
Barcelona October 2023

SCHOOL PRIZE

1940



1960



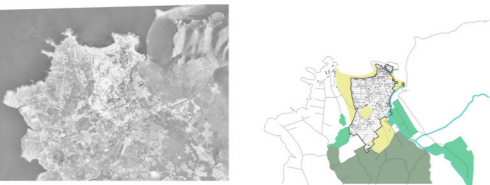
1969



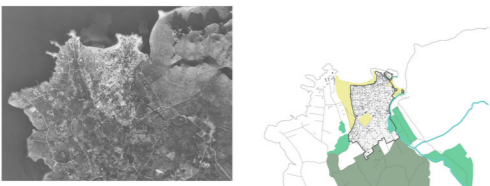
1979



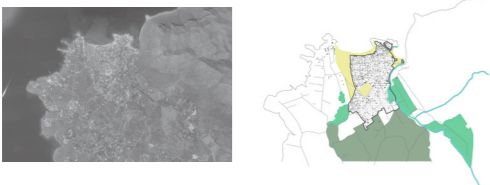
1989



1999



2011



?

2011

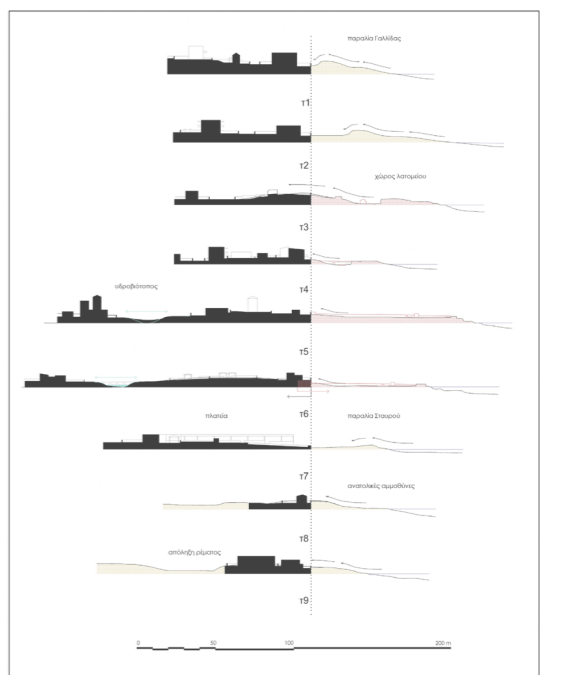
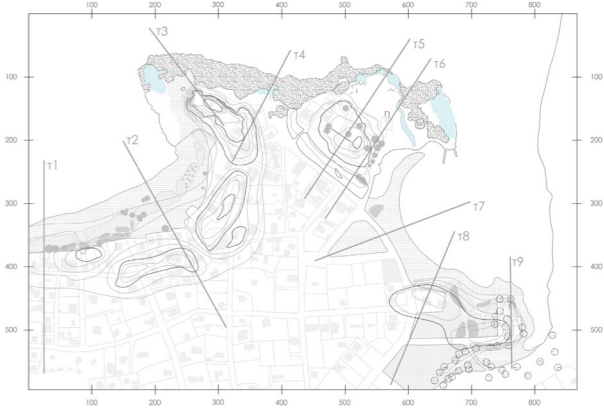
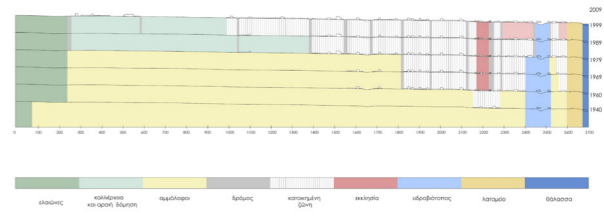
20

46

95

323

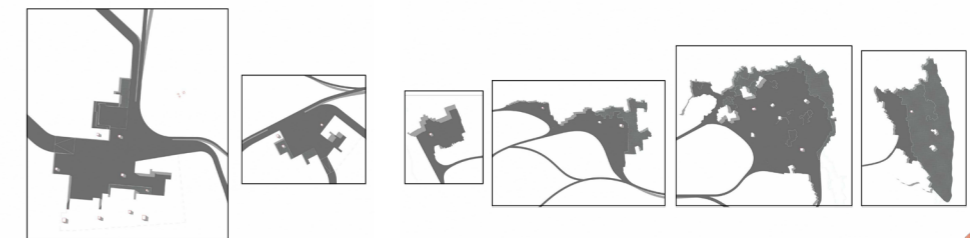
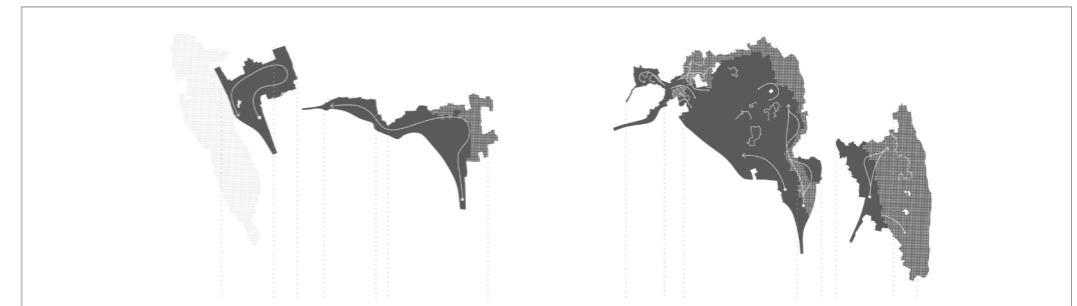
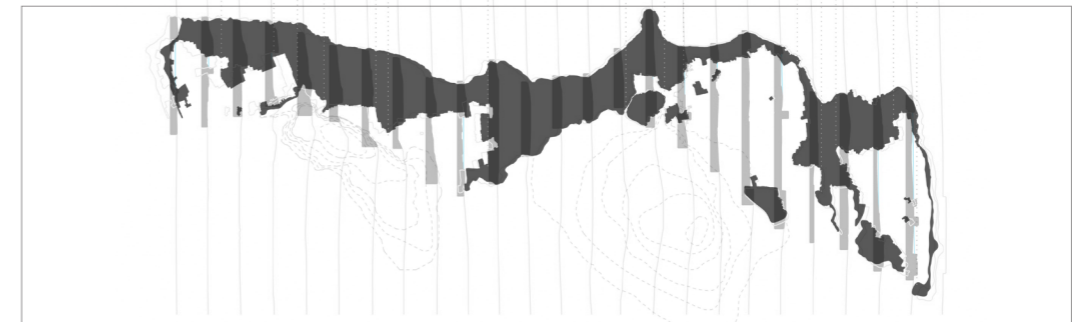
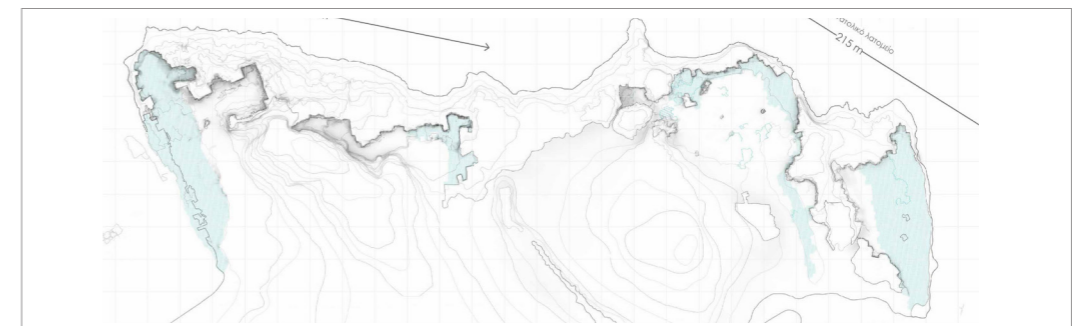
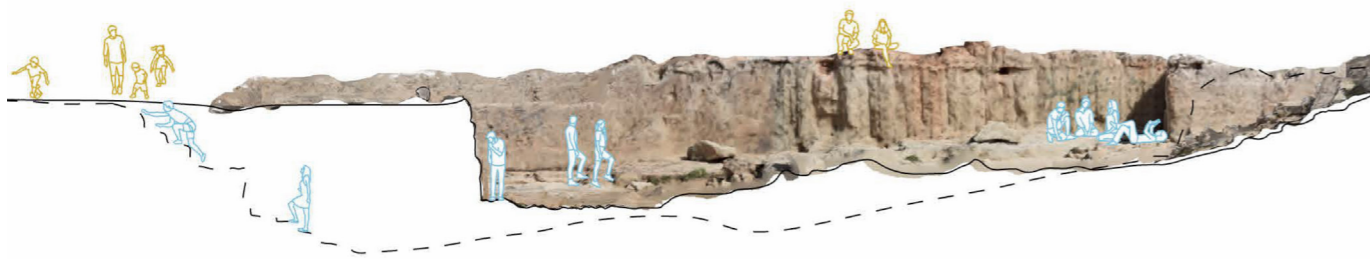
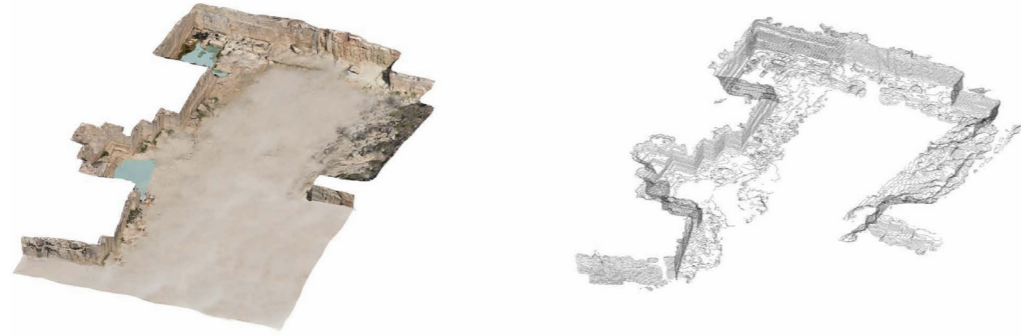
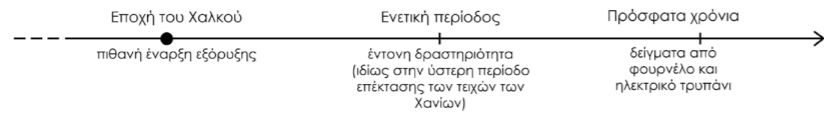
460



+ Seeking balance

a.

Outside the vague residential boundaries, the landscape continues in some places to retain its raw natural form, but in others it is under pressure from the continuous spread of housing. We find places of particular local value, disconnected from each other and difficult to access, due to the privatization of the areas by the settlers. These "fragments of landscape" understood as such after the encroachment of the settlement, are the beach of Gallida, the Venetian quarry on the northern coast, a small wetland south of the previous one, the beach of Stavros, the stream of Nerokampos, with the agricultural zone and the beach at the end of it and finally the Vardias mountain.

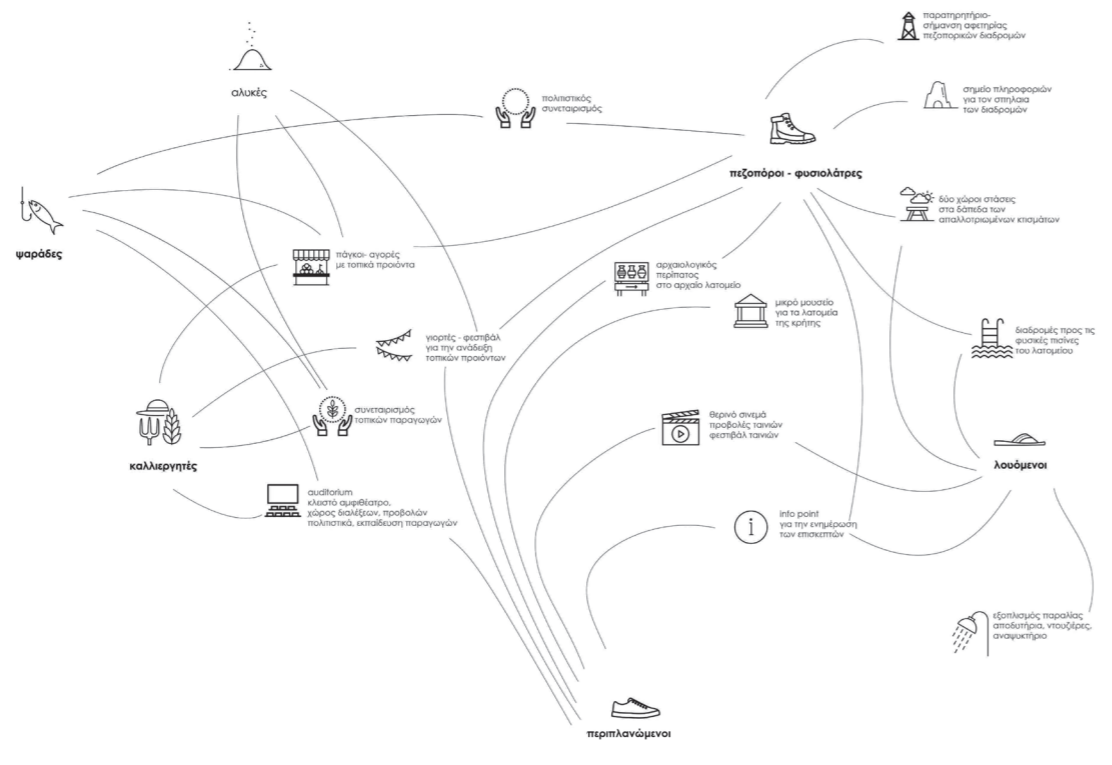


+ looking for connections

b.

The project focuses on the remains of the archaeological site to find its language. It is a special place where the excavated rock creates spaces that encourage the movement of the user: sitting under the shade, going up to the highest levels, immersing himself in the small lagoons. This is how some typologies of space are classified. We have the hugs, the stomachs, the islets, the branches, the nests. Using these qualities as a tool, the project tries to transfer the spatial experience of the quarry to the public space.

ΟΙ ΠΑΙΧΤΕΣ



+ in search of anew character

C.

Looking for the new identity of the town we find ourselves with the problem of the monofunctionality of this tourist area. At the same time, the wider area of the settlement can offer more opportunities for the local economy and identity: farmland, fishing, hiking, archaeological sites, but also the connection to the cinema that is produced in our collective memories, through the characteristic Scene of Zorba's movie. A new character for Stavros could be based on the common and simultaneous presence of all of the above in the public space, that is, culture, local producers and leisure.