



Country /City

CHILE / VALPARAISO

University / School

UNIVERSIDAD DE VALPARAISO / ESCUELA DE ARQUITECTURA

Academic year

2021

Title of the project

7 STAYS TO INFRAESTRUCTURIZE QUEULAT NATIONAL PARK

Authors

JAVIERA STEPHANIE URZUA GALLEGUILLOS

TECHNICAL DOSSIER

Title of the project	7 STAYS TO INFRASTRUCTURIZE QUEULAT NATIONAL PARK
Authors	JAVIERA STEPHANIE URZUA GALLEGUILLOS
Title of the course	GRADUATE PROJECT
Academic year	2021
Teaching Staff	CRISTIAN ROJAS CABEZAS
Department / Section / Program of belonging	ESCUELA DE ARQUITECTURA DE VALPARAISO
University / School	UNIVERSIDAD DE VALPARAISO / ESCUELA DE ARQUITECTURA



7 Stays to Infraestructurize Queulat National Park

The project was born from the landscape, from the southern landscapes of the South of the World. Cold, silent, humid landscapes where nature manifests itself in a powerful way. The architectural proposal wants to provide an infrastructure to a National Park that at the moment doesn't have it. This infrastructure would make it possible to receive visitors and bring nature closer to them, without the park being affected by waste or pollution from people. In order not to become a large infrastructure. The project is dispersed throughout the park through small interventions that respond to the logic of the artefact in the landscape, that is to say an obviously anthropic construction, with a simple, clear, almost neutral form that wants to resonate with the landscape, so the project became a mimesis with nature. The experience of the inhabitant becomes unforgettable.

It is proposed to create 7 stages arranged in strategic locations in the Park, where the lines are governed by the pre-existence and geographical conditions. The relationship with the bridge, river connection and view towards the snow drift give way to its location.

Each artefact is connected to each other by roads, trails and bridges, the 7 stages are: Portico of the Rest, Conaf pass - Park Rangers, Coffee Shop, Exhibition Tower, Hostelry, Kayak Pier and Observatory of the Birds.

For further information

Máster d'Arquitectura del Paisatge - UPC

Contact via email at:
master.paisatge.comunicacio@gmail.com

biennal.paisatge@upc.edu

Máster d'Arquitectura del Paisatge - UPC

Sede ETSAB - Universitat Politècnica de Catalunya

Calle Jordi Girona, 15. Edificio Omega 1-3
08034 Barcelona - Spain

COAC - Colegi oficial d'Arquitectes de Catalunya

Carrer Arcs, 1-3
08002 Barcelona - Spain

12th International Biennial Landscape Barcelona

Barcelona November 2023

SCHOOL PRIZE

7 STAYS TO INFRASTRUCTURIZE QUEULAT NATIONAL PARK AYSSEN REGION, CHILE

LOCATION / STRATEGIES

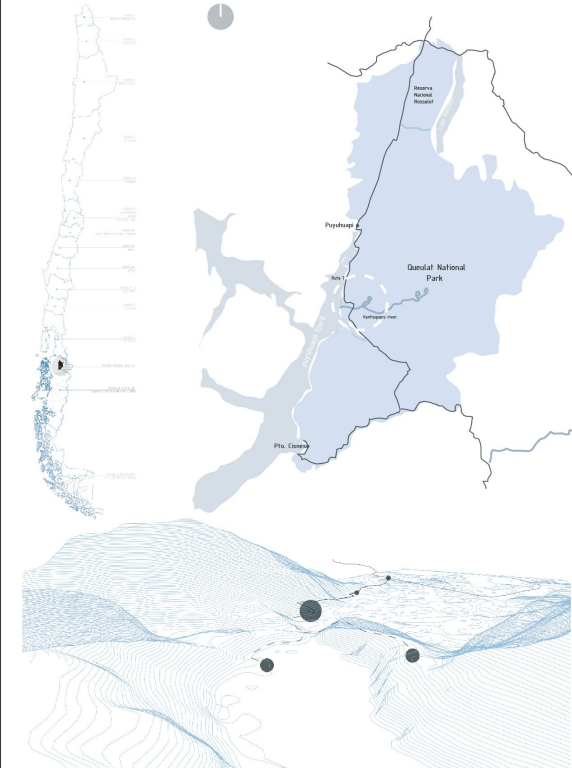
In the south of Chile is the Aysen Region, an area composed of fjords, glaciers, snow-capped mountains and lush forests. This area is the Queulat National Park, which had the dialect of the Kawashkar language, Queulat means "Far Lands".

This park is one of the main tourist attractions in the region; however, it lacks infrastructure to promote this sector, especially in the area of the hanging snowdrift, where there is only a suspension bridge that connects two hills to make way for trails.

In order to consolidate tourism as a central axis for the development of the Aysen Region, it is proposed to improve and reinforce the ecological linkage through the implementation of infrastructure. Through this study there are 5 strategic points for the hanging snowdrift sector.

These 5 points are divided into:

- Portico of the rest.
- Conaf pass and park rangers sector.
- Project core: coffee shop, exhibition tower and hospedery.
- Kayak pier.
- Observatory of the birds/ Shelter.



BUILDING THE SITE

5 STRATEGIC POINTS

The proposal has 7 infrastructures that are the starting points; from the 5 strategic points.

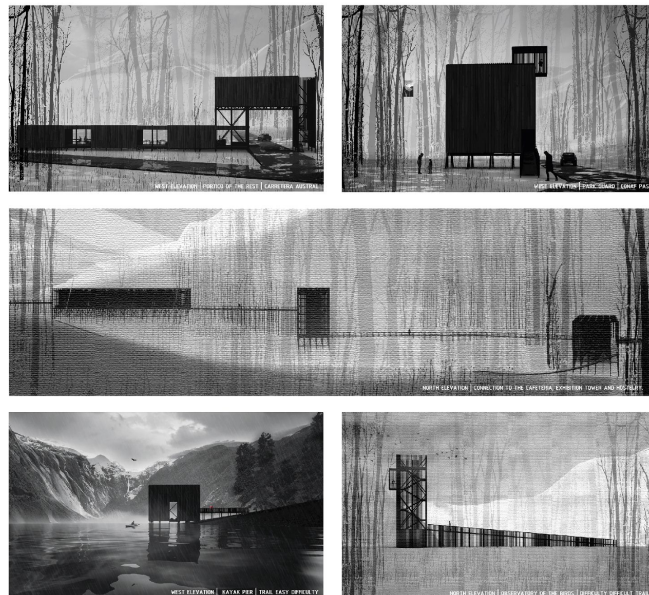
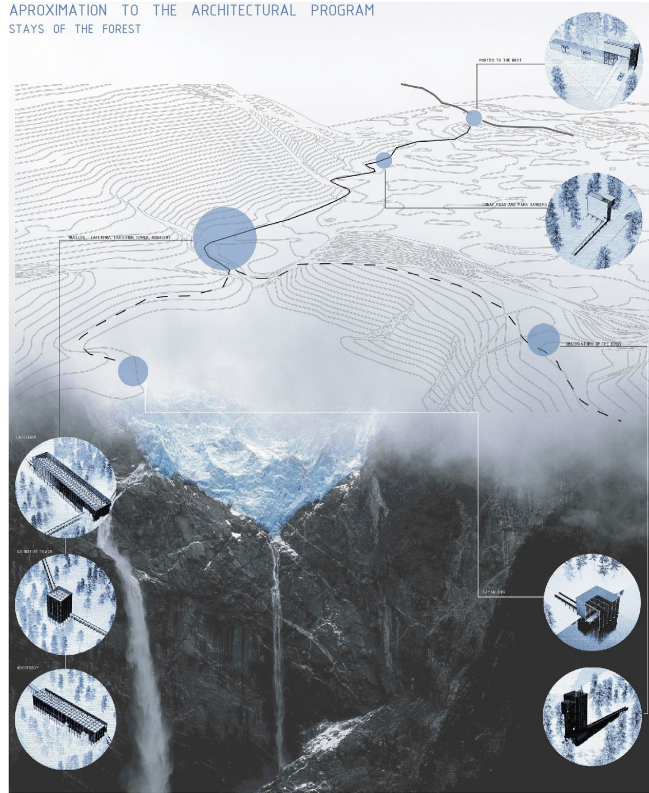
In the Queulat National Park, where the lines are governed by the pre-existences and geographical condition and view towards the snowdrift give way to its location.

Each architectural volume is connected to each other by roads, paths and bridges in order to have a complete union of the park. 7 architectural volumes are in different size and proportion depending on the architectural program established at each point. The first 3 architectural volumes are connected by an existing main road and, the 4 volumes are extended by walkways, bridges and trails that connect the hills through streams of water.

For each structure the zenithal, vertical and horizontal light is taken into account, in order to enhance the atmosphere of the site.

APPROXIMATION TO THE ARCHITECTURAL PROGRAM

STAYS OF THE FOREST



1 PORTICO OF THE REST | CARRETERA AUSTRAL

At the side of the Carretera Austral is the first infrastructure, a portico that begins the main road to Queulat National Park. This stay receives visitors, backpackers and tourists so that they can rest from the long day they have spent in the south of the country.

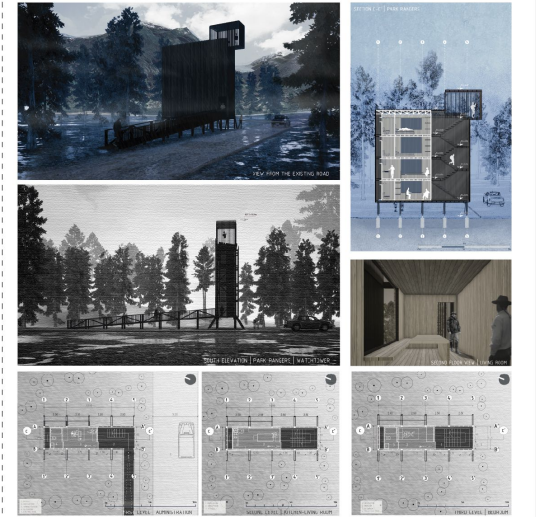
This piece has two horizontal pavilions that culminate in a circulation tower. The first and second levels contain 2 skins that protect from the rain and comfort the human body. Along the first level there are intermediate spaces where the visitor can stay temporarily, including bathrooms, kitchens and living areas. On the second level is the sleeping car, a place designed for those who are passing through on their trip and just want to rest.



2 PARK RANGERS | CONAF PASS

This second stay is located next to the park's main road. It is a space designed to protect and satisfy the needs of the people in charge of the place, such as resting, observing and registering visitors entering the place.

The volume has 4 levels connected by a stairwell, which is accessed by a walkway that connects directly to the park ranger's administration. The second floor has a living room and kitchen. The third and fourth levels are designed for the park rangers to rest. At the top of this infrastructure is the surveillance point overlooking the park.

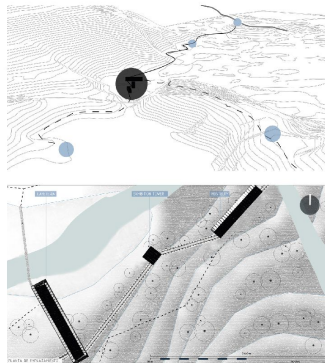


VISITOR'S CENTER | 3 VOLUMES CONNECTED

Within the strategic points, is the nucleus, where the first lines are governed by the pre-existences and geographical conditions. Being the relation with the bridge, river connection and view towards the snowdrift those that give way to its location.

It gives rise to 3 architectural volumes of which are two pavilions and a tower. Those are extended by means of footbridges that give union to the hills by which in their streams water flows pass. In addition, the extensions that arise from the figure give way to trails that later lead to other infrastructures within the forest.

For the three structures the zenithal, vertical and horizontal light is taken into account, in order to enhance the atmosphere of the place.



As a first instance the first structure contains the large dining room composed of rooms within it.

Then, when crossing the walkway, we find the exhibition tower whose vertically is enhanced by hanging objects inside it.

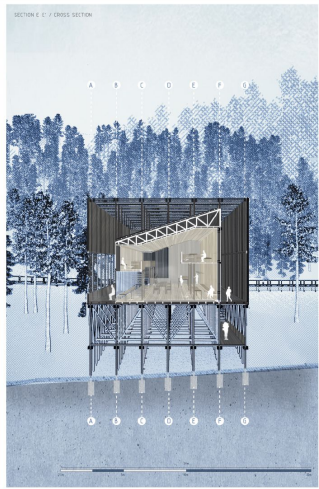
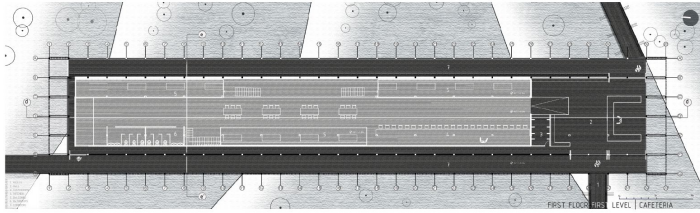
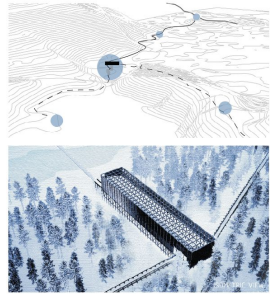
The third architectural volume is reached, which is composed of a hostelry to receive visitors on a permanent basis.



3 COFFEE SHOP

At the end of the existing road, the coffee shop is located, it is a pavilion that is born from the suspension bridge route.

This piece has a large space, from it 3 balconies overlook the interior, on the first level a long transparency is added to enhance its horizontality.

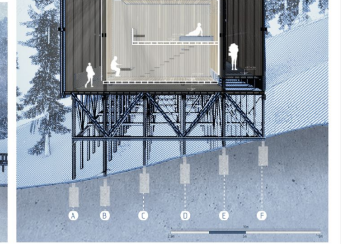
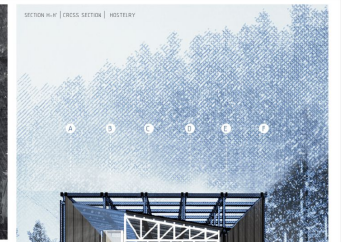
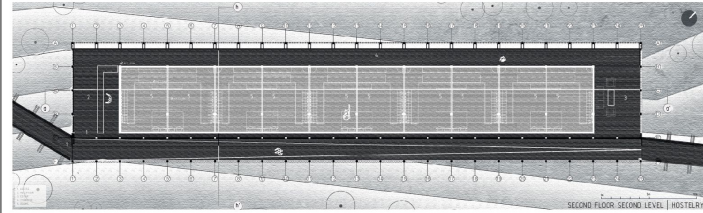
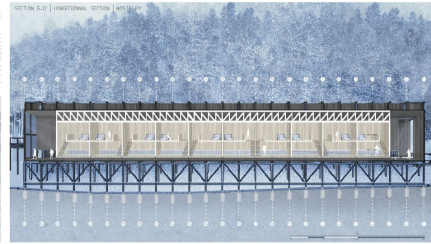
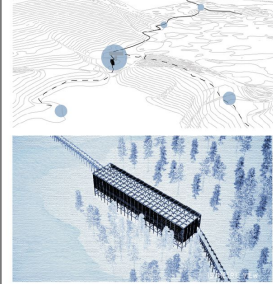


5 HOSTELERY

Next to the exhibition tower is the lodge, a pavilion that welcomes visitors so that they can stay longer in Quedad National Park. Its location is governed mainly by the rivers and the view of the hanging snowdrift. It also has a large zenithal opening.

This piece is divided into 10 modules of rooms, each of them has 2 floors. On the second floor is the kitchen-living area and bathroom, on the second floor is the bedroom. At both ends there is a double height that opens to the landscape.

Finally, this infrastructure gives way to a new path that projects along the edge of the hill that leads to the kayak pier.

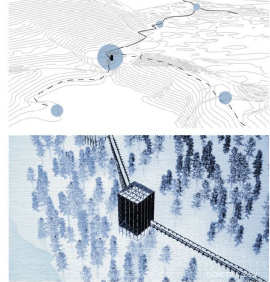


4 EXHIBITION TOWER

Following the walkway coming from the coffee shop, you will find the exhibition tower. This stay receives visitors so that they can become culturized thanks to the information found on the canvases hanging from the tower.

This piece has a great emphasis in its interior with glimpses on one side that come from the circulation found in its intermediate skin. From its inner skin hang information curtains and a large canoe that tells the history of the place.

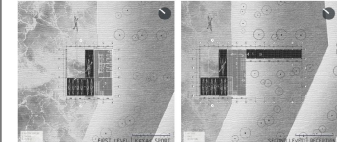
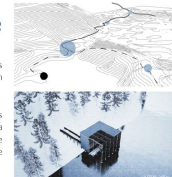
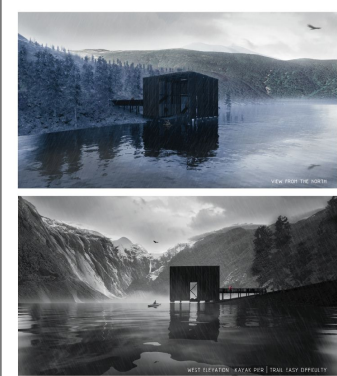
On the first level there are tables where people can see local handicrafts. On the last level there is a glazed corridor that connects to the exterior walkway, which leads to the next volume.



6 KAYAK PIER

Connecting from the new path that comes from the hostelry, it culminates at the kayak pier. A stay located on the edge of the laguna Pirañas, which comes to enhance the sporting experience and contact with water.

The volume has three levels, accessed by a walkway that connects directly to the second level. On this floor is the reception where there is a control of the people who can access the first level where the kayaks are located. Finally, on the top floor there is a coffee shop that overlooks the cold landscape of the hanging snowdrift.



7 OBSERVATORY OF THE BIRDS | SHELTER

The bird observatory is the last ranch that completes the infrastructure of the park and is located within the section of the "Sendero Mirador Ventisquero Colgante". It is located at an altitude of 260 m and along the trail there is a diversity of flora and fauna. Of the birds that can be seen are the black woodpecker (*Campylorhynchus magellanicus*), condors (*Vultur gryphus*), thucos (*Stelochelchus ruberctul*) and huad huad (*Pteroglyphus tarna*).

This observatory is also qualified as a resting point within the hour, having at the same time on the first level a shelter where visitors can take shelter in case of strong gusts of wind. Adding, a unique experience for the person who visits it.

