

EConnect

URBAN GAIA

Landesresilienzschau
Offenburg 2050

Professur
Landschaftsarchitektur
Prof. Henri Bava
Arturo Romero
Carnicero

Elisa Muhr
Oliver Leitzbach

Country /City
University / School
Academic year
Title of the project
Authors

Germany, Karlsruhe
KIT - Karlsruhe Institute of Technology
2023
EConnect
Oliver Leitzbach, Elisa Muhr

TECHNICAL DOSSIER

Title of the project EConnect
 Authors Oliver Leitzbach, Elisa Muhr
 Title of the course Urban Gaia - Landesresilienzschau Offenburg
 Academic year 2023
 Teaching Staff Prof. Henri Bava, Arturo Romero
 Department / Section / Program of belonging Faculty of Landscape Architecture
 University / School Karlsruhe Institute of Technology (KIT)



Written statement, short description of the project in English, no more than 250 words

Our EConnect project is an ambitious landscape project that aims to connect local ecosystems through urban space to promote biodiversity. The project focuses on introducing new biotopes and diverse plants throughout the urban landscape to create a more natural environment and protect and support a wide variety of animals, plants and fungi in their population. This can yield ecosystems that are adaptable to climate change. In order to gain more knowledge about symbiotic effects between individual species, Offenburg will become a test site for biotope variations

12th International Biennial Landscape Barcelona

Barcelona November 2023

SCHOOL PRIZE

For further information

Máster d'Arquitectura del Paisatge - UPC

Contact via email at:
master.paisatge.comunicacio@gmail.com

biennal.paisatge@upc.edu

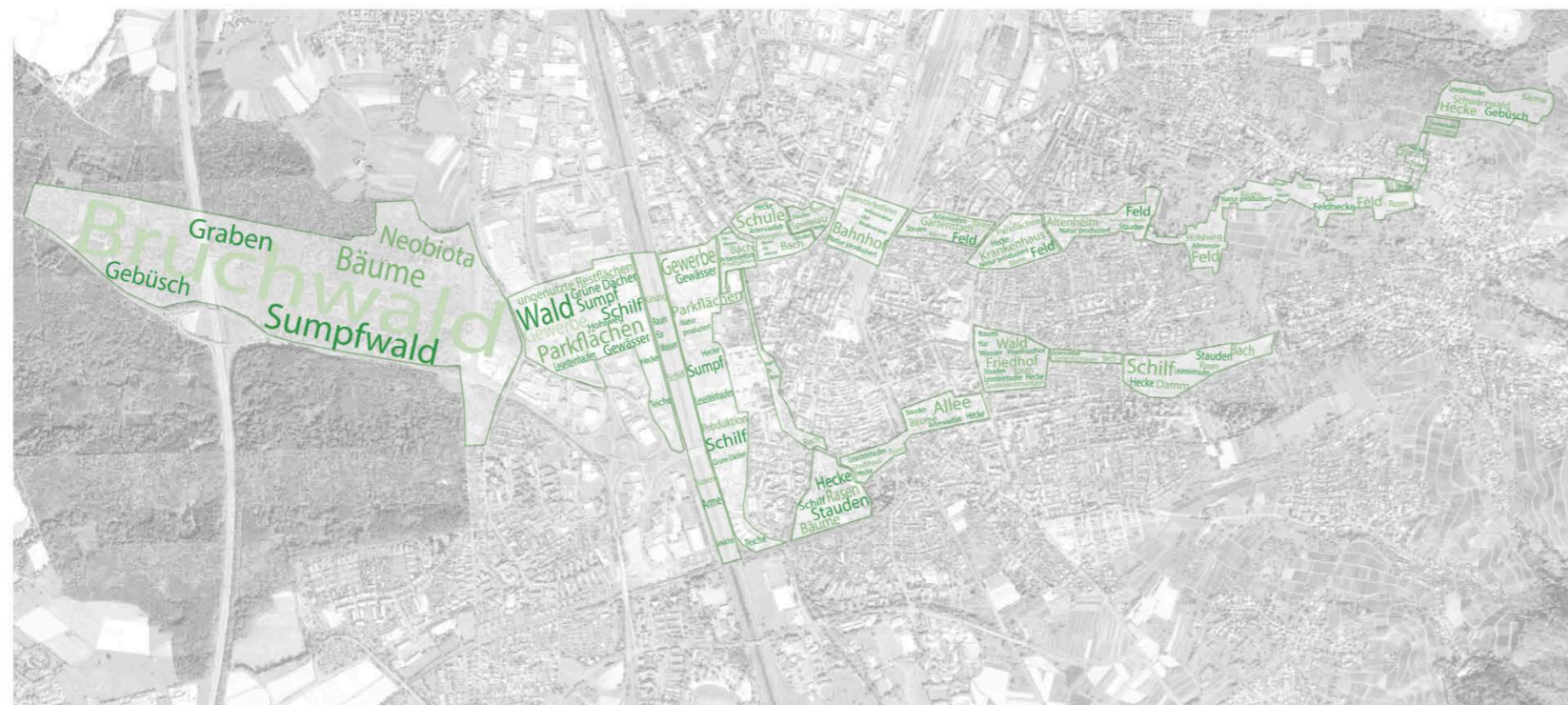
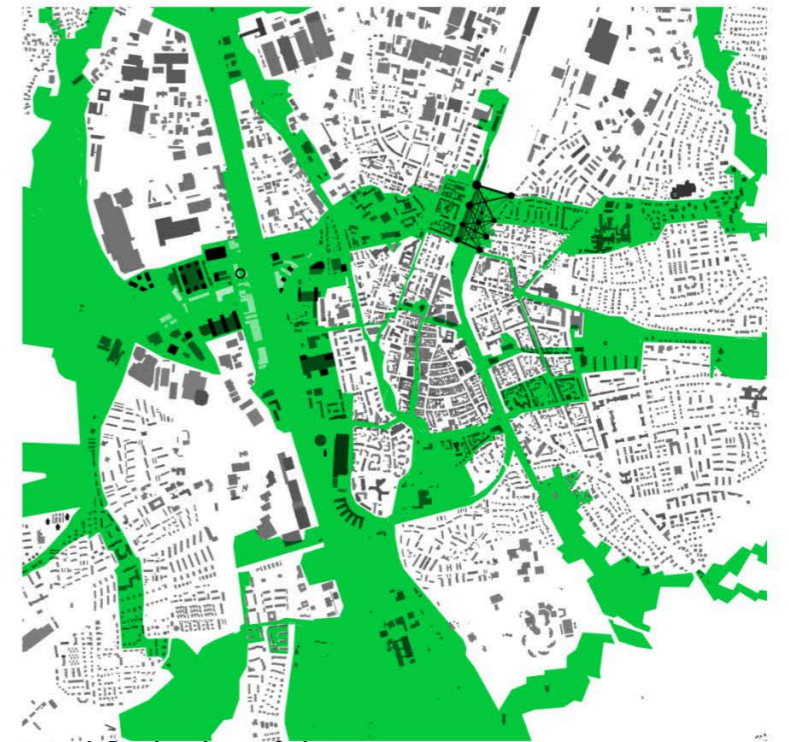
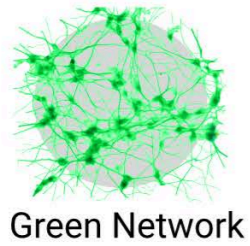
Máster d'Arquitectura del Paisatge - UPC

Sede ETSAB - Universitat Politècnica de Catalunya

Calle Jordi Girona, 15. Edificio Omega 1-3
08034 Barcelona - Spain

COAC - Colegi oficial d'Arquitectes de Catalunya

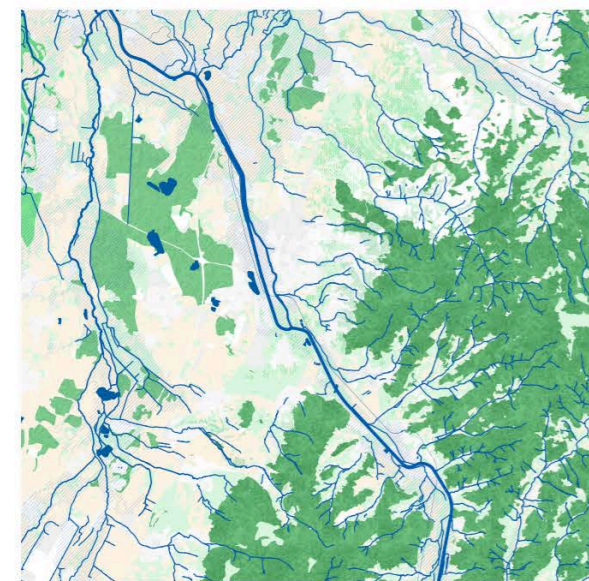
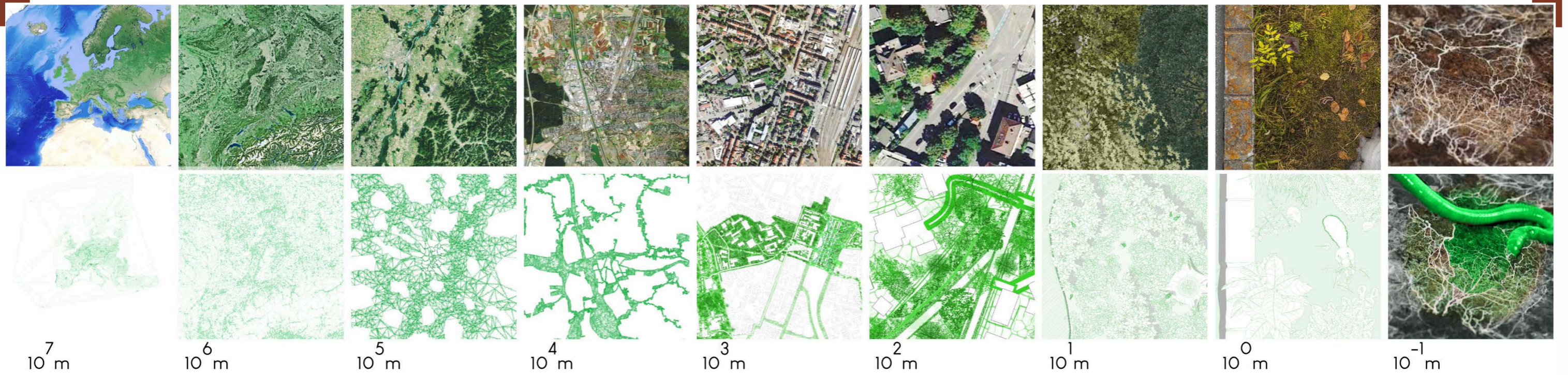
Carrer Arcs, 1-3
08002 Barcelona - Spain



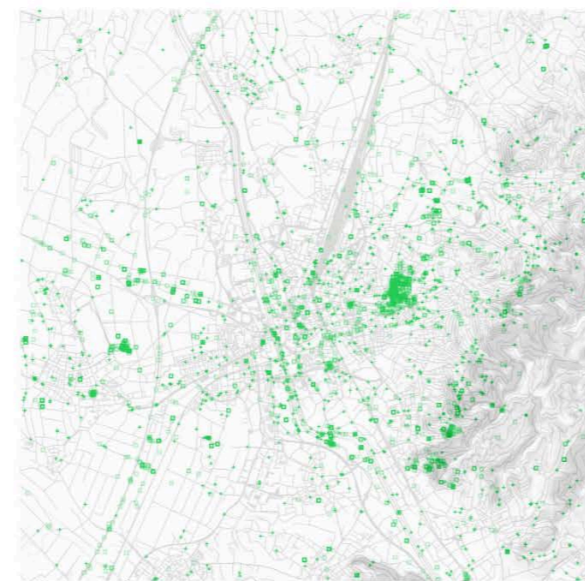
Biotope types



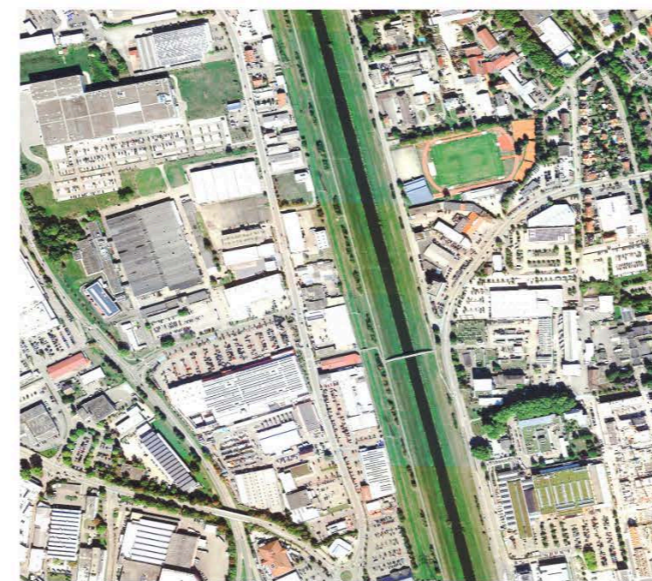
New biotopes of the industrial zone



Landscape characterisation



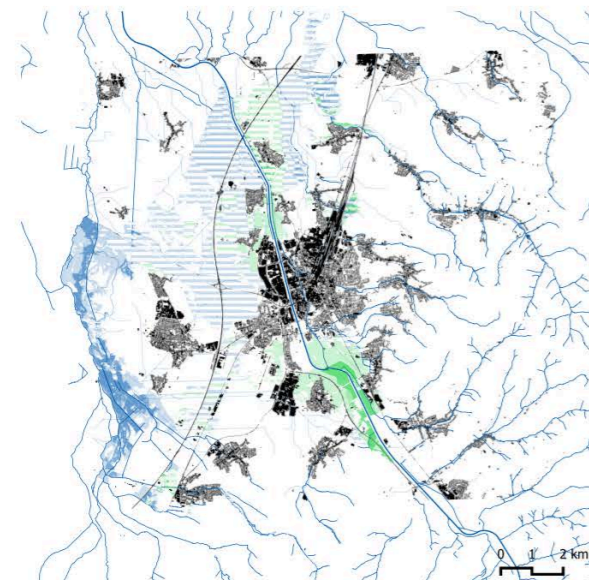
Occuring species



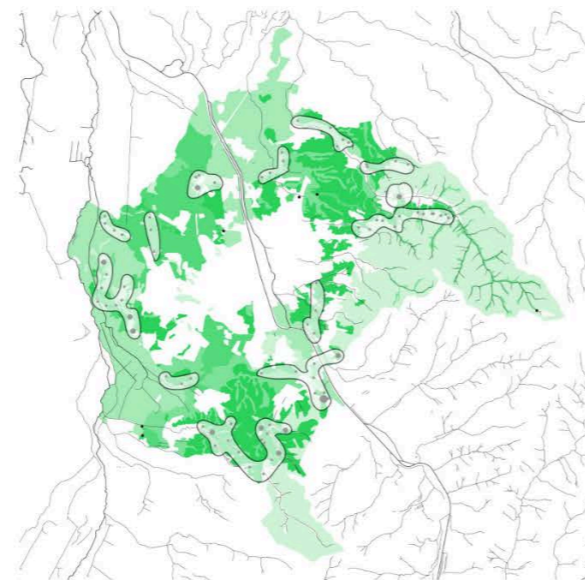
Aerial view of the industrial zone with the channelised Kinzig



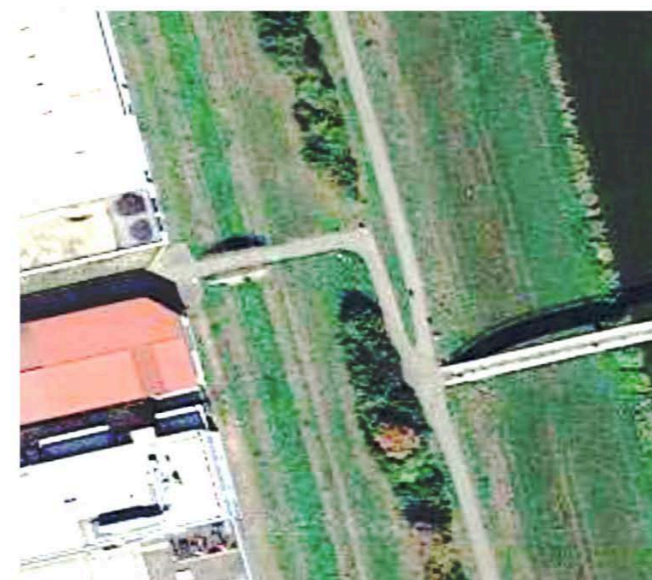
Transformation as inhabited and productive artificial wetlands



Potential wetlands or infiltration areas



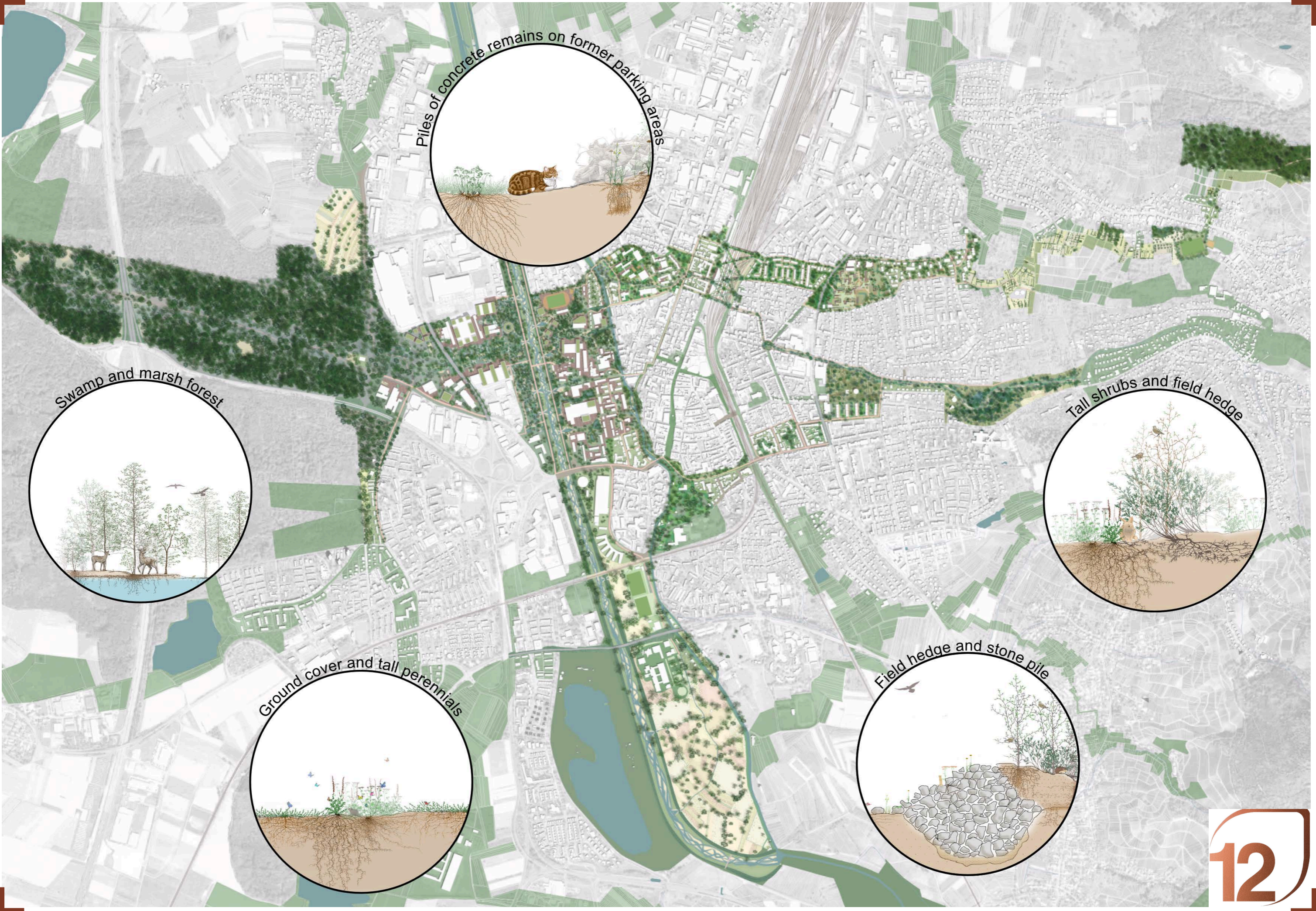
Transition zones of Soil types



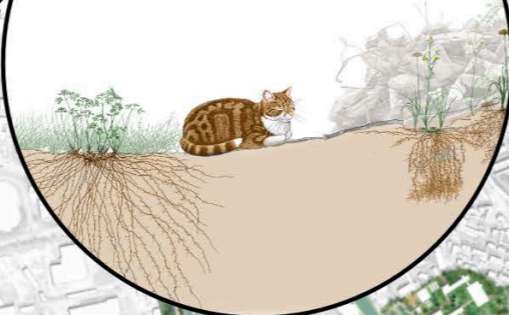
Aerial view of the high water dam



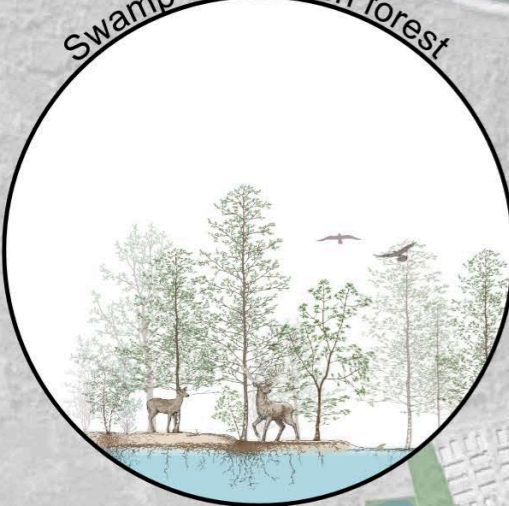
Added culverts and renaturalised Kin



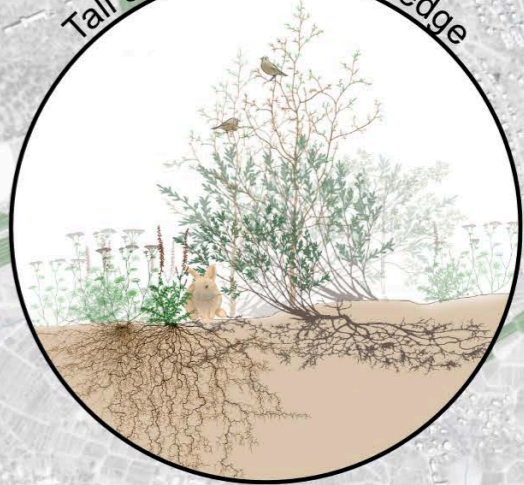
Piles of concrete remains on former parking areas



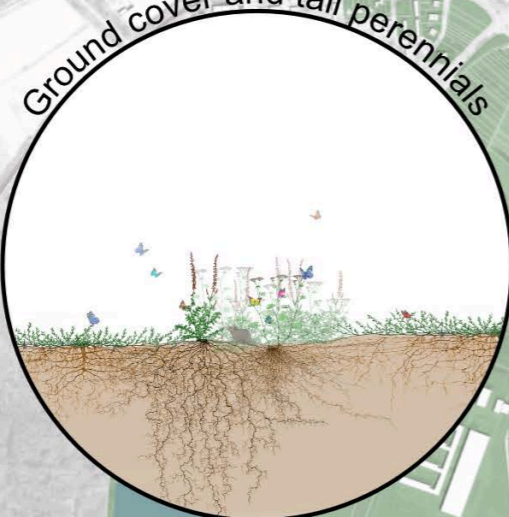
Swamp and marsh forest



Tall shrubs and field hedge



Ground cover and tall perennials



Field hedge and stone pile

