



Country /City Sant Cugat del Vallès / Rubí
University / School Universitat Politècnica de Catalunya (UPC) / Escola Tècnica Superior d'Arquitectura del Vallès (ETSAV)
Academic year 2020 - 2021
Title of the project Parc Productiu del Torrent dels Aous (Torrent dels Aous Productive Park)
Authors Oriol Riera Gual / Marc Vizcarra Pascual

TECHNICAL DOSSIER

Title of the project	Parc Productiu del Torrent dels Alous (Torrent dels Alous Productive Park)
Authors	Oriol Riera Gual / Marc Vizcarra Pascual
Title of the course	MARqETSAV. Màster universitari en arquitectura (habilitant)
Academic year	2020 - 2021
Teaching Staff	Josep Ricart, Isabel Castiñeira, Xavier Gimferrer
Department / Section / Program of belonging	Landscape architecture
University / School	Universitat Politècnica de Catalunya (UPC) / Escola Tècnica Superior d'Arquitectura del Vallès (ETSAV)



Written statement, short description of the project in English, no more than 250 words

Can the productive activity be part of the landscape?

The Torrent dels Alous Productive Park is the result of a holistic, multiscale vision. Starting from the metropolitan scale, the project proposes mediating solutions between the segregating infrastructures and the shape of the territory under the premise of the reactivation and intensification of the productive activity along the B-30. Located under a metropolitan proposal, the project exposes a new way of building a city. Where productive architecture and landscape coexist in harmony. Through programmatic, economic and urban analysis, the proposal is consolidated with a dual operation. Where on the one hand the road infrastructure coexists with the taxonomic urban fabric and on the other hand the civic infrastructure with the environmental. Thanks to this dual functioning and the creation of small productive neighbourhoods, the proposal works with an introspective look towards the functional aspects and a retrospective look towards the contact with the landscape. Through the creation of collective logistic courtyards and a proposal for exterior facades, the desired contact with the Mediterranean landscape is achieved.

For further information

Màster d'Arquitectura del Paisatge - UPC

Contact via email at:
master.paisatge.comunicacio@gmail.com

biennal.paisatge@upc.edu

Màster d'Arquitectura del Paisatge - UPC

Sede ETSAB - Universitat Politècnica de Catalunya

Calle Jordi Girona, 15. Edificio Omega 1-3
08034 Barcelona - Spain

COAC - Colegi oficial d'Arquitectes de Catalunya

Carrer Arcs, 1-3
08002 Barcelona - Spain

12th International Biennial Landscape Barcelona

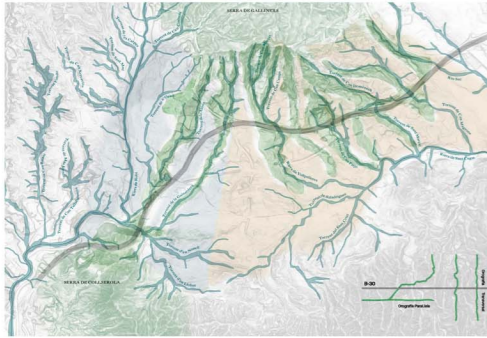
Barcelona October 2023

SCHOOL PRIZE

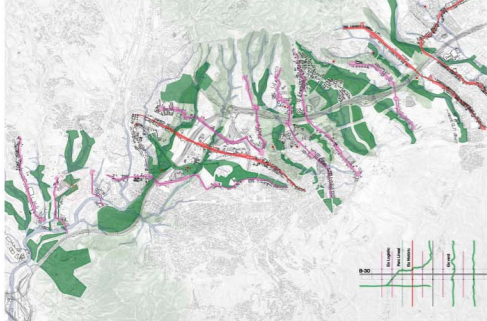
Torrent dels Alous Productive Park

Metropolitan View: The LOOP

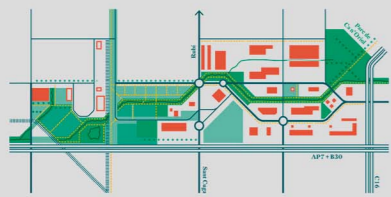
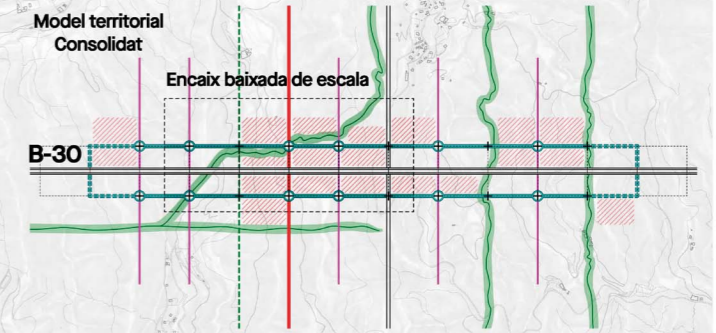
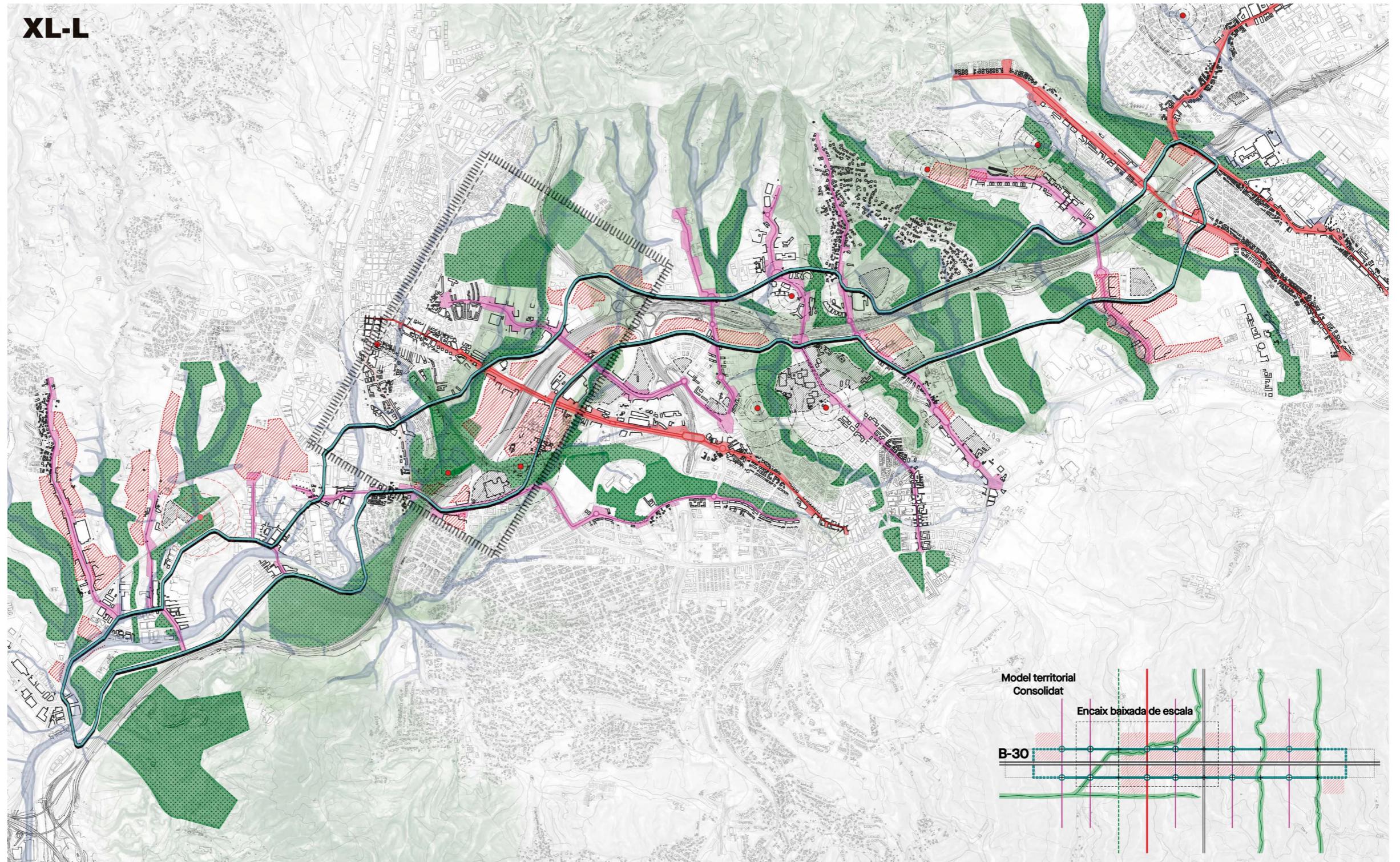
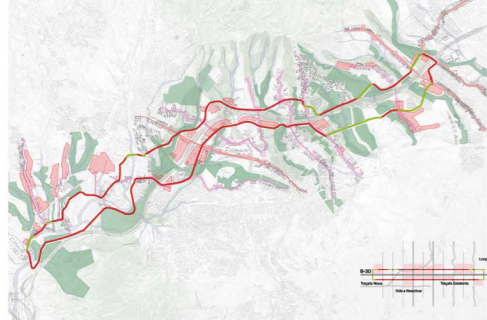
The orographic Situation



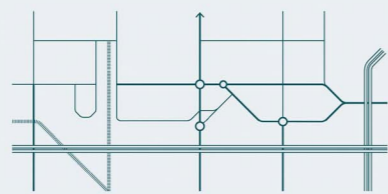
The transversality of LOOP



The new productive belt



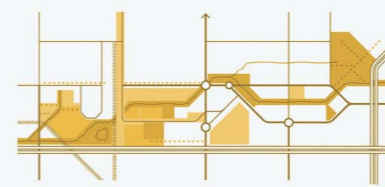
Current Situation



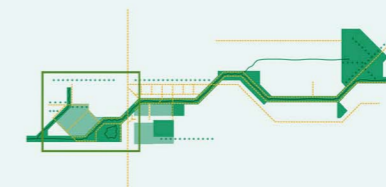
Excessive Road Infrastructure



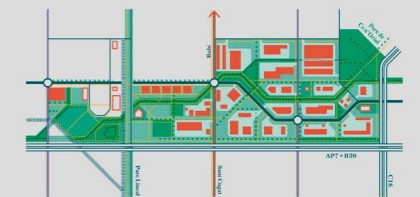
Industries with perimetrical fences



Paralyzed urban zoned land used as civic spaces



Visualization and limited accessibility to the Alous lake



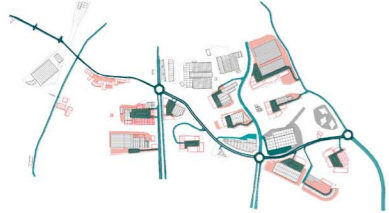
New concept of the mediterranean productive Park

Project Area Situation

Municipal View: The Mediterranean Productive Park

*Can productive activity
coexist with the landscape?*

Logistic-productive Infrastructure



Civic and landscape infrastructure



Estratègia Viària

Estratègia Taxonòmica

Estratègia Cívica

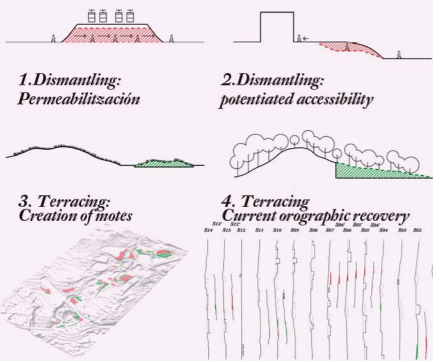
Estratègia Biològica

Estratègia Hidrològica

Estratègia Orogràfica

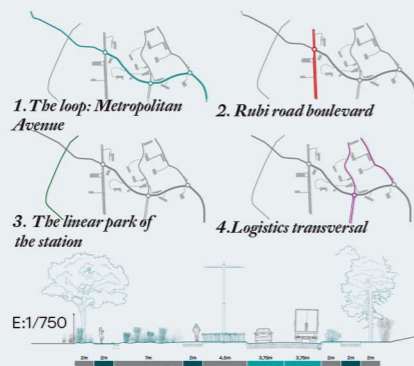
Orographic Strategy

Land balance between land clearing and landfills



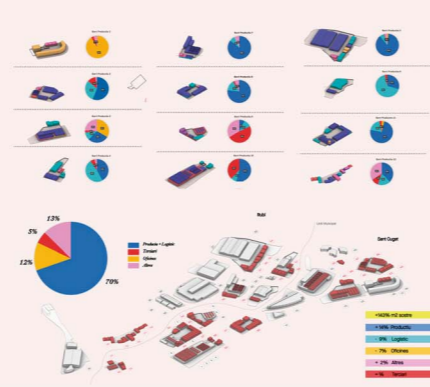
Road Strategy

Current road structure simplification and transversal hierarchical structuring.



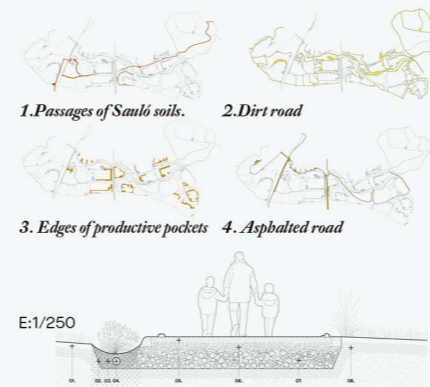
Taxonomic Strategy

Programmatic equilibrium from the pre-existences



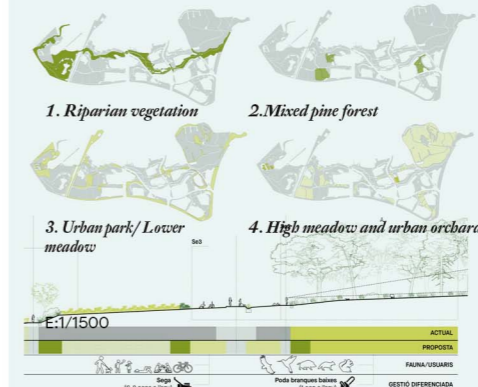
Pedestrian Strategy

Recognition of areas claimed for the citizenship and creation of the new mobility system



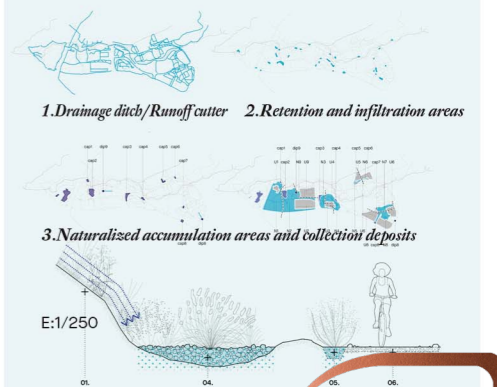
Biological strategy

Recovering the mediterranean landscape and riparian landscapes



Hidrographic strategy

Improvement of the water infrastructure



Logistic-productive Infrastructure

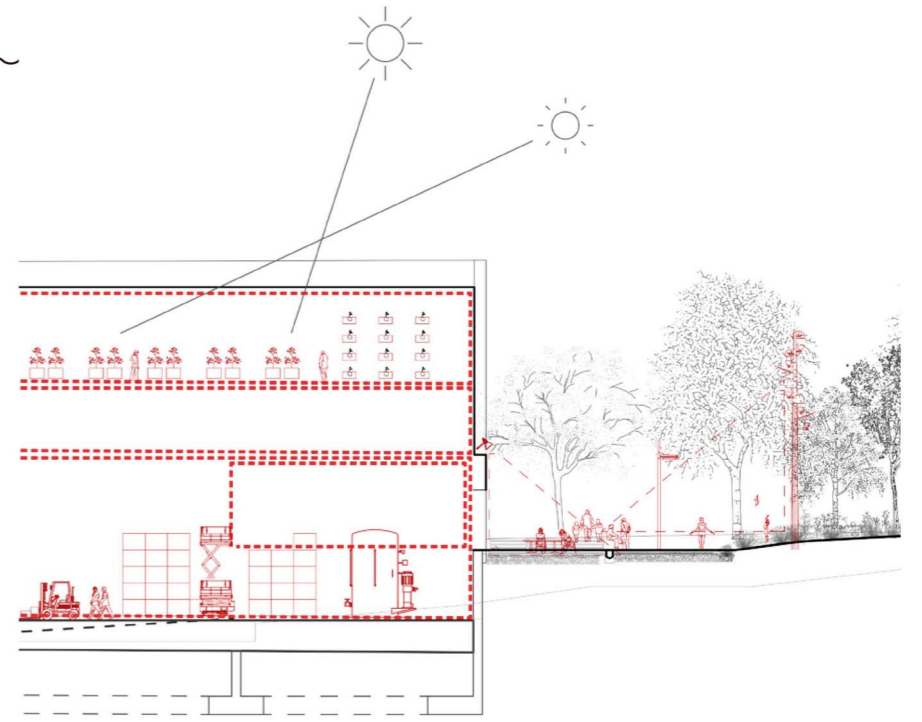
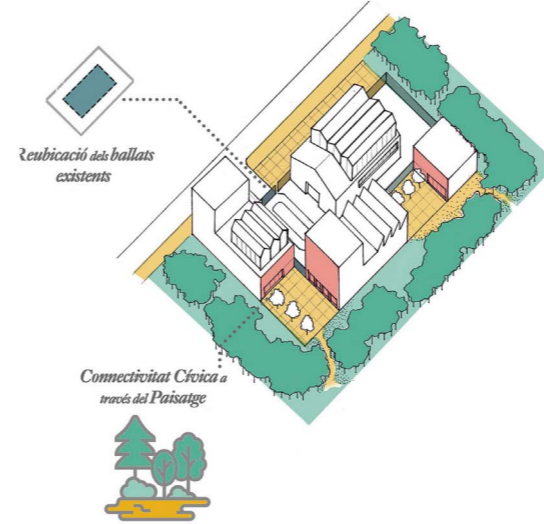
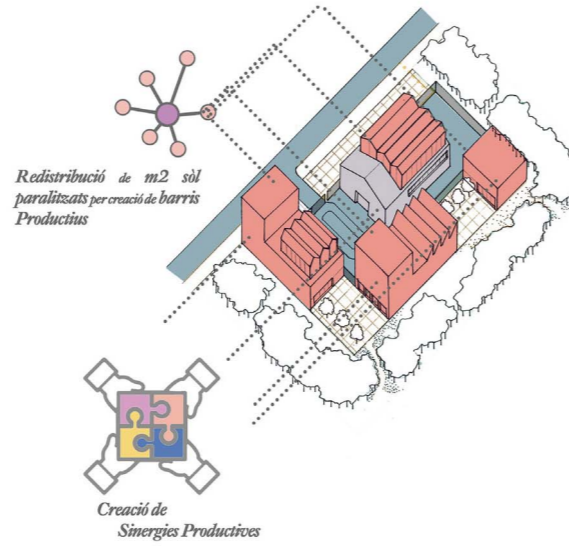
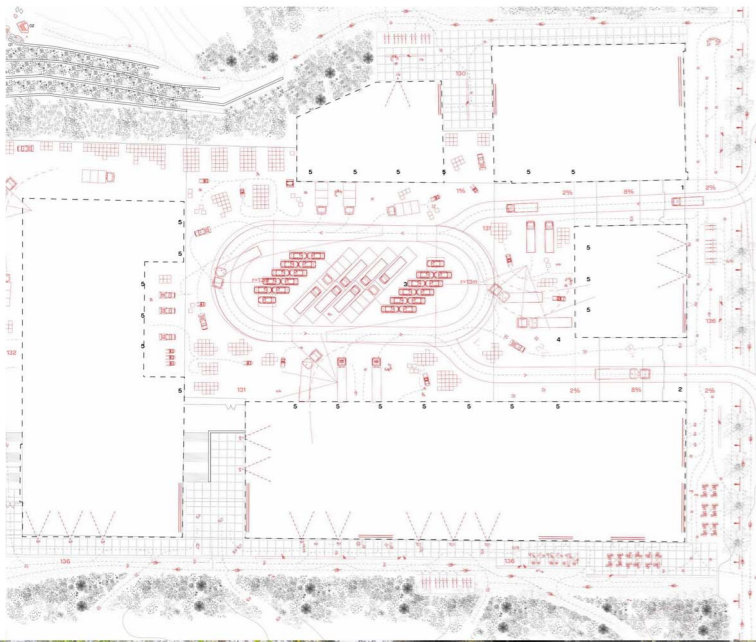
Civic and landscape infrastructure



Productive Intensification Proposal of Community Courtyards



Productive Intensification Reactivation of exterior facades



Infrastructure proposals

