



Country /City Spain /Barcelona

University / School Universitat Politècnica de Catalunya / ETSAB and EEAB

Academic year 2022/23

Title of the project The floating plaza

Authors Aleix Aymerich Oliver, Vincent de Gasperi and Ariadna Garriga Ballarín

TECHNICAL DOSSIER

Title of the project	The floating plaza
Authors	Aleix Aymerich Oliver, Vincent de Gasperi and Ariadna Garriga Ballarín
Title of the course	Landscape design studio III
Academic year	2022/23
Teaching Staff	Victòria Fiol Duran, Sergi Carulla Altadill and Manel Sangenís Garcia
Department / Section / Program of belonging	Department of Urban and Territorial Planning and Landscape, DUTP
University / School	Universitat Politècnica de Catalunya / ETSAB and EEAB



Written statement, short description of the project in English, no more than 250 words

Located in Barcelona, the *Plaça Calvó* is a public space that faces various challenges, such as the lack of visitors and an evident discomfort due to steep slopes and uneven ground. The limited range of activities and absence of vegetation further contribute to its drawbacks.

The plaza's potential lies in its proximity to Collserola, the largest natural park in the area. This presents an opportunity to create ecological and social connections, envisioning a green corridor that allows both nature and humans to coexist harmoniously.

To address these issues, the project aims to create new activities, solve the topographic problem, protect existing tree root systems, and establish an inviting link between the plaza and the natural park. The design involves a floating, interactive platform with built-in usage that respects the environment and incorporates a continuous canopy, connecting the park ecologically and socially while enhancing the plaza's appeal to visitors.

For further information

Máster d'Arquitectura del Paisatge - UPC

Contact via email at:
master.paisatge.comunicacio@gmail.com

biennal.paisatge@upc.edu

Máster d'Arquitectura del Paisatge - UPC

Sede ETSAB - Universitat Politècnica de Catalunya

Calle Jordi Girona, 15. Edificio Omega 1-3
08034 Barcelona - Spain

COAC - Colegi oficial d'Arquitectes de Catalunya

Carrer Arcs, 1-3
08002 Barcelona - Spain

12th International Biennial Landscape Barcelona

Barcelona November 2023

SCHOOL PRIZE

THE BEGINNING OF A NEW JOURNEY TO NATURE



Actual view of the Plaça Calvó

Located in Barcelona, *Plaça Calvó* is situated in a properous part of the city. Lined with **great views**, **mediteranean pine trees** and in close proximity to **Collserola**, the largest natural park of the area, which serves as **the lungs of Barcelona**.

UNDERSTANDING HISTORY TO BRING BACK THE OLD PATHS

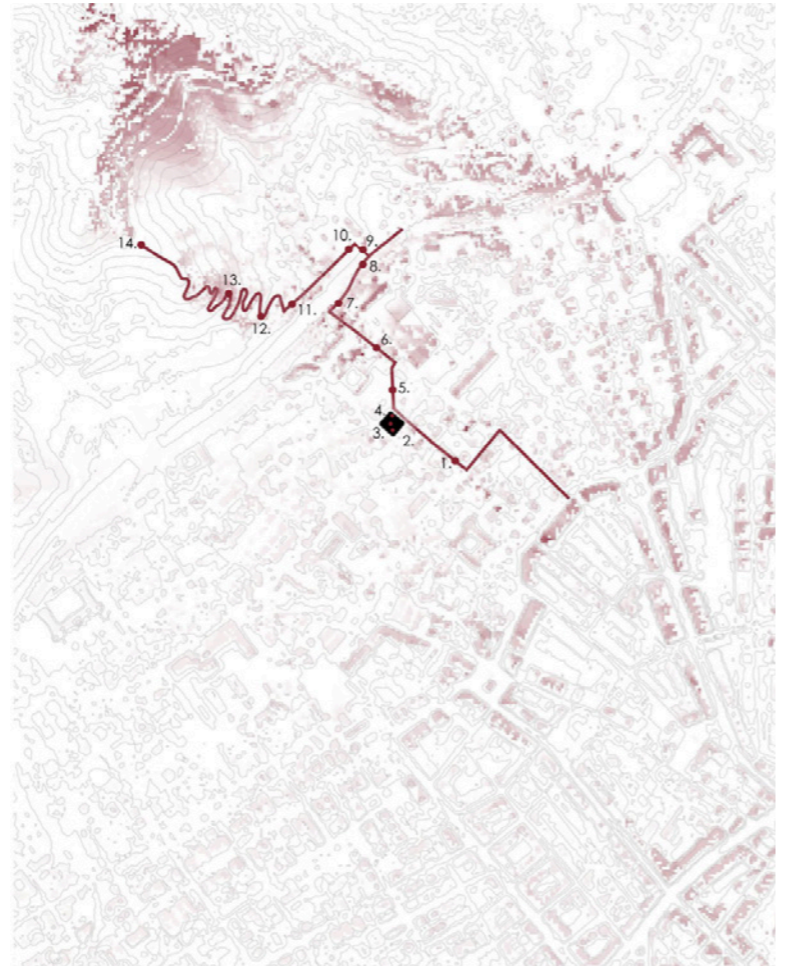


MERGING THE URBAN FABRICS WITH THE CITY GREEN INFRASTRUCTURE

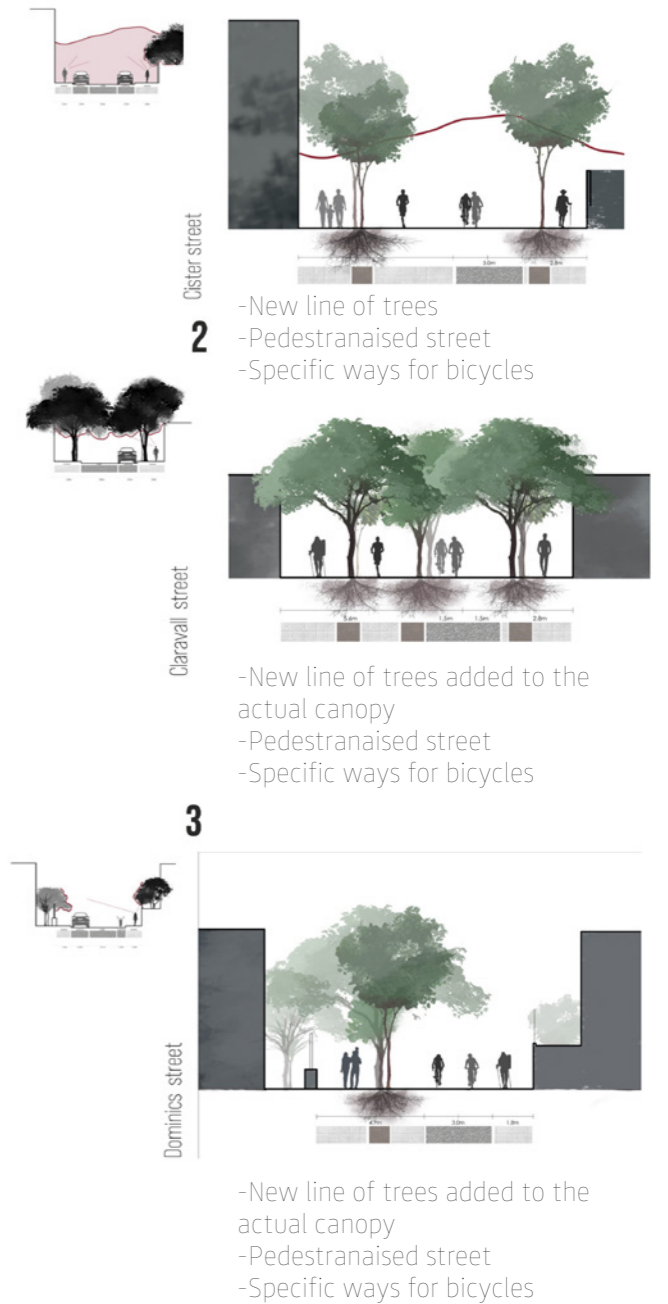
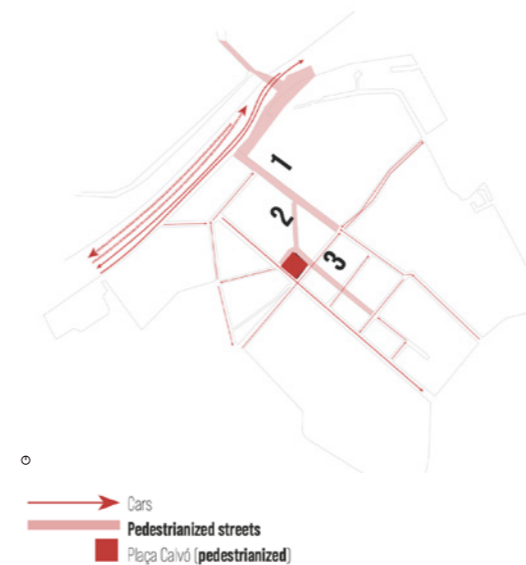


The new *Plaça Calvó*. The **wood** and **floating platform** bring the **new character** to the place.

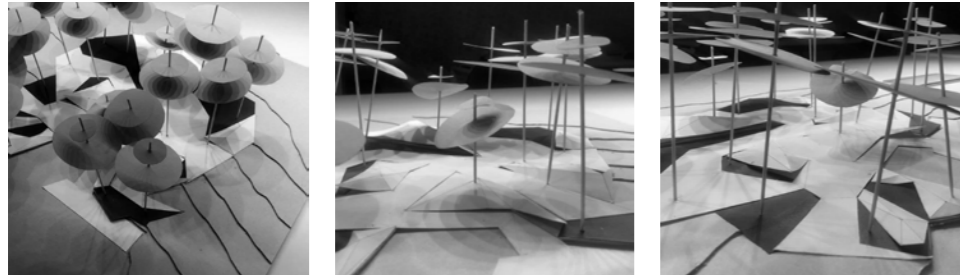
REVELING THE UNNOTICED EXPERIENCES ALONG THE PATH



ENCOURAGING A WALKABLE PATHWAY BETWEEN THE CITY AND NATURE



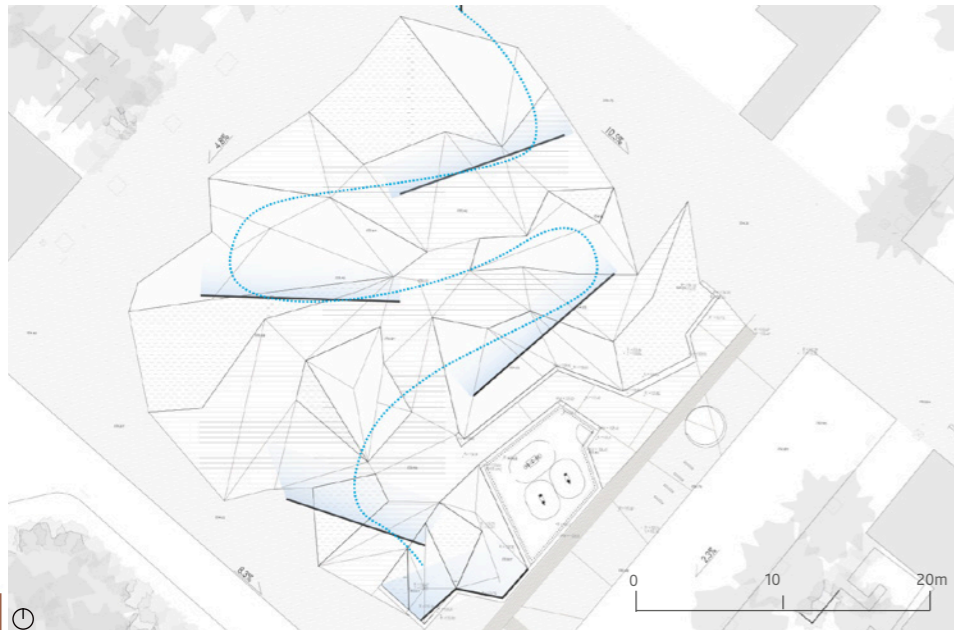
UNDERSTANDING THE COMPLEX GEOMORPHOLOGY OF THE SITE



USING THE TOPOGRAPHY OF THE SPACE IN OUR FAVOUR



AVOIDING STORM WATER RUN-OFF EROSION EFFECT BY A FLIPPER METHOD

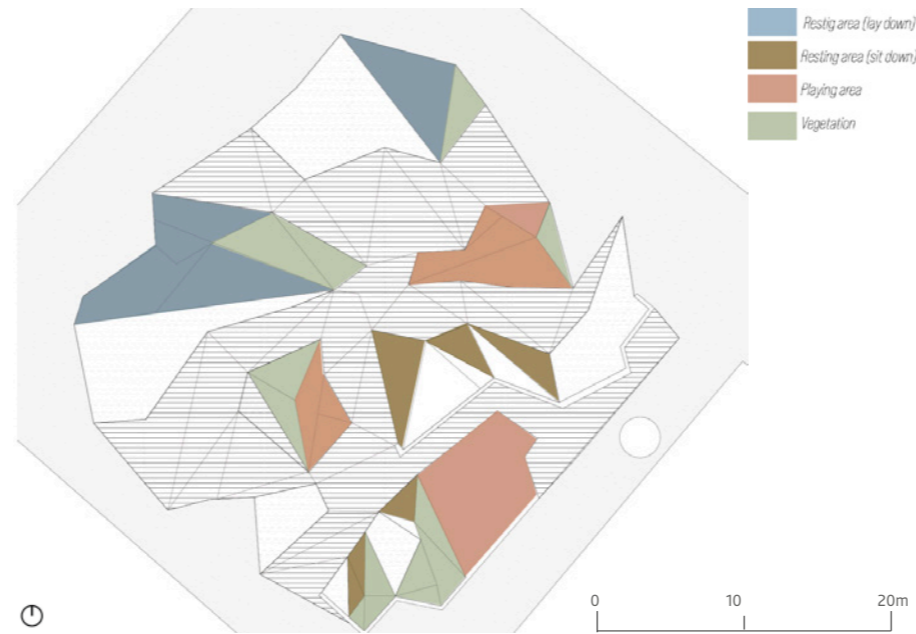


CLAIMING THE PUBLIC USE OF THE PLAZA

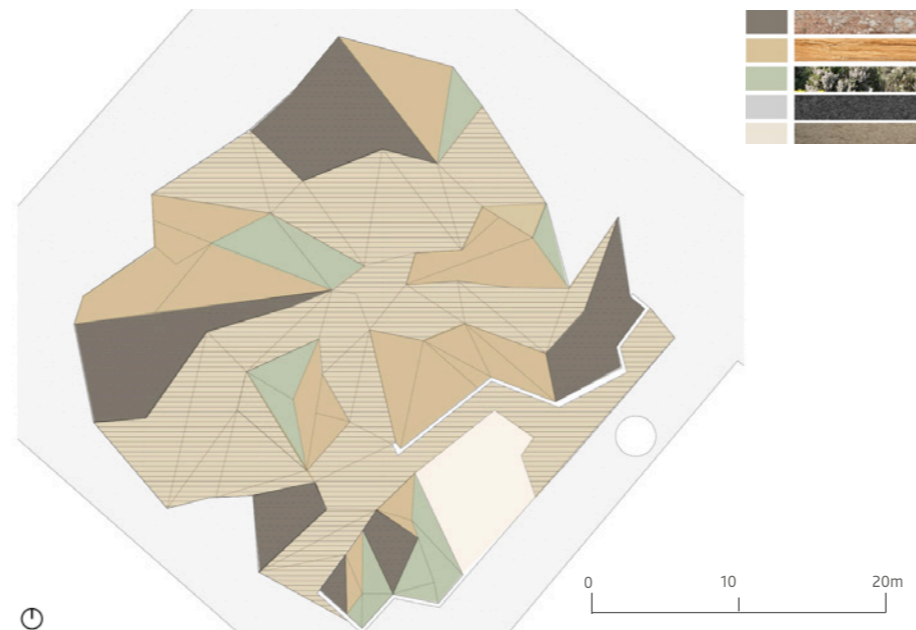


Calvó plaza Private Public

RESTING AND PLAYING INTEGRATED IN THE SAME SPACE



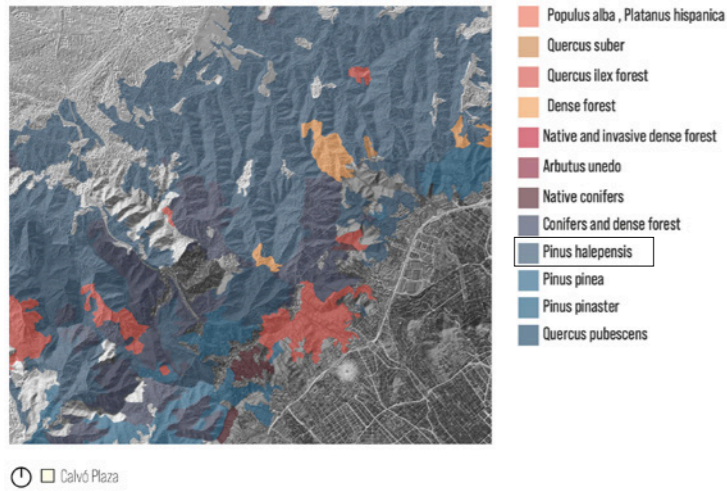
MATERIAL PALETTE INSPIRED BY THE NEARBY LANDSCAPE



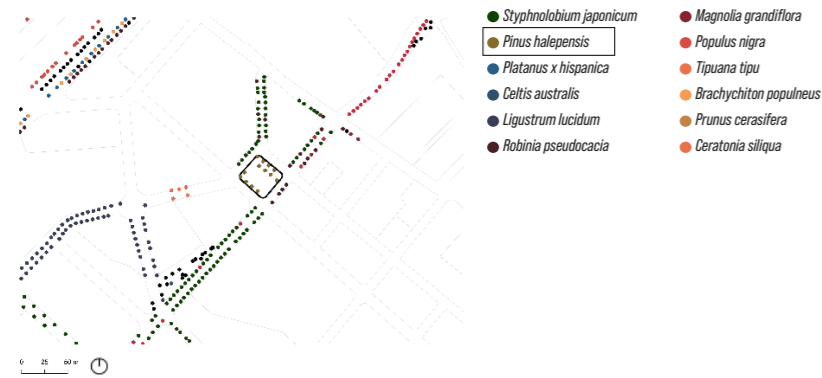
The wood structure can be used for a wide variety of functions

LETTING NATURE INVADE THE CITY

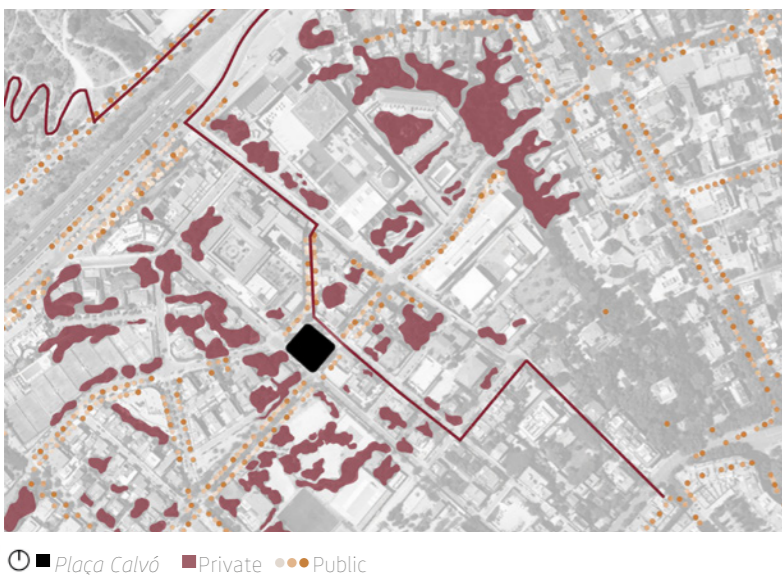
BEING AWARE OF THE **GREEN COMPLEXITY OF THE NATURAL PARK** IN ORDER TO ENRICH THE TYPES OF PLANTS OF THE NEW PLAZA



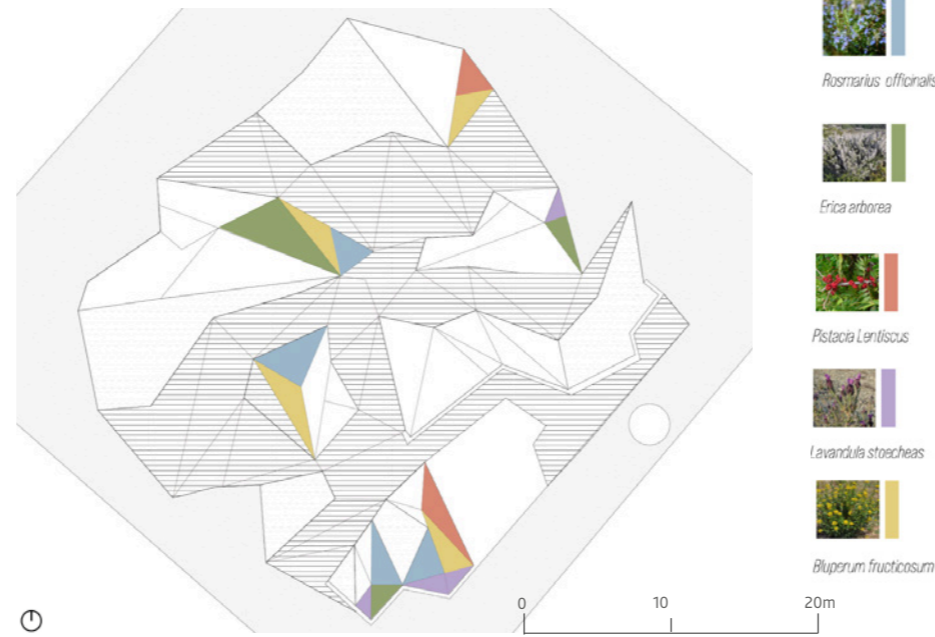
THE **ACTUAL CANOPY** REVEALS THE CONNECTION WITH THE PARK OF **COLLSEROLA**



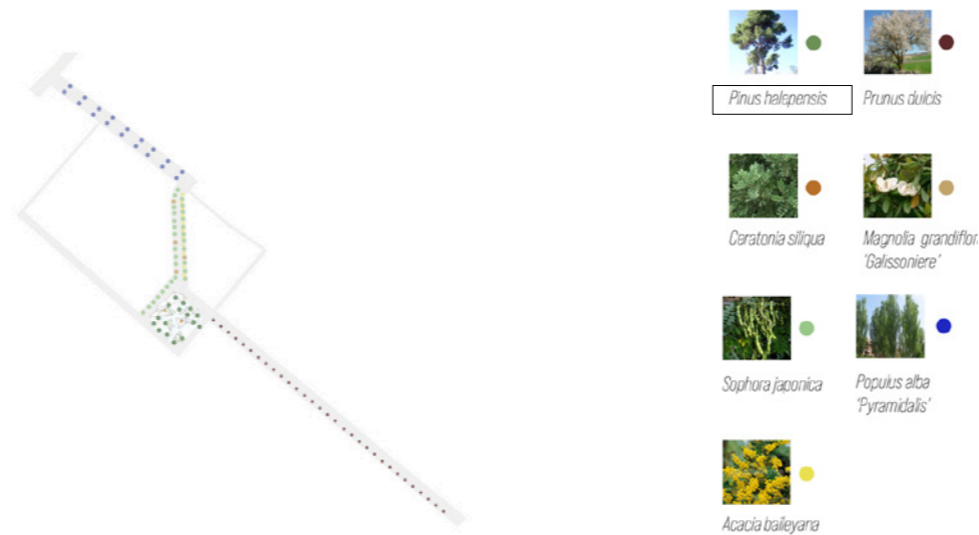
THE **PRIVATE GREEN** IS USED TO BE CONNECTED WITH THE **PUBLIC GREEN** INFRASTRUCTURE



COLOURS ALL YEAR AROUND



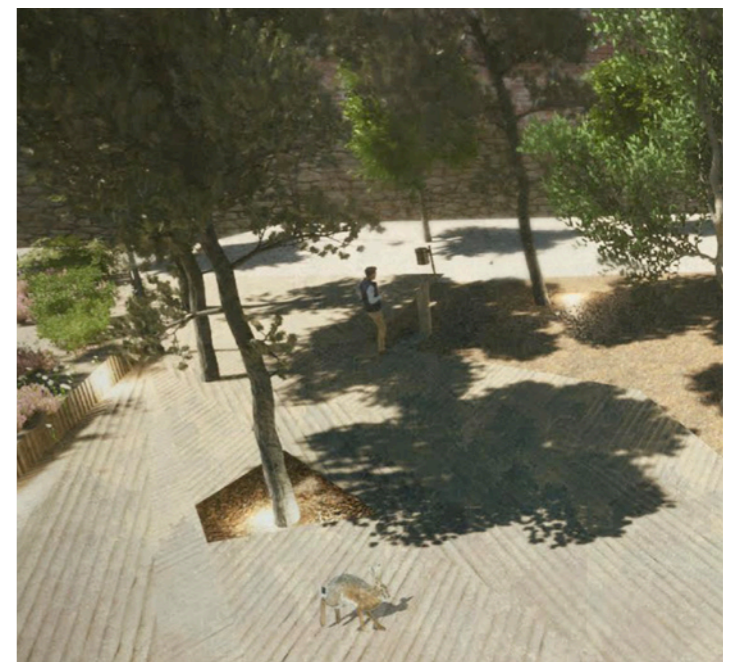
THE **NEW CANOPY** DEFINES THE CALVÓ PLAZA AND THE **WAY TO THE NATURAL PARK OF COLLSEROLA**



THE **PINE TREES (Pinus halepensis)** DETERMINE THE TRUE CHARACTER OF THE PLAZA



THE **ROOT SYSTEM** NEEDS TO BE PROTECTED



The **floating platform** protects the actual trees and allows new ones to be brought into the space